

# PHILIPS

Vivid Ends  
straightener

StraightCare

with SplitStop technology

for split ends prevention

Ionic conditioning

Keratin infusion



BHS675



## Put your hair in the spotlight

Up to 95% split-free ends\*

Vivid ends straightener is our first straightener designed to protect your fragile ends. Thanks to our premier SplitStop Technology you can enjoy beautifully styled hair with healthy looking ends!

### Beautifully styled hair

- Keratin infusion for better care
- More care with ionic conditioning for shiny, frizz-free hair

### Proven to prevent split ends

- SplitStop Technology for ultimate split ends prevention
- UniTemp sensor for beautifully styled hair with less heat
- Ceramic coating for smooth gliding and damage prevention
- 11 digital temperature settings for absolute control

### Ease of use

- Extra Long plates (105mm) for fast and easy straightening
- Cool Tip to easily create curls and waves
- Fast heat up time, ready to use in 30 sec
- 1.8 m power cord
- Auto shut-off for safe usage

# Highlights

## SplitStop Technology



Our secret to ultimate split ends prevention is the new SplitStop Technology. It is a unique combination of UniTemp sensor and our smooth ceramic plates to respect the health of your hair. The UniTemp sensor protects your hair from being exposed to unnecessary high heat and our styling plates guarantee minimal friction for ultimate split ends protection.

## UniTemp Sensor

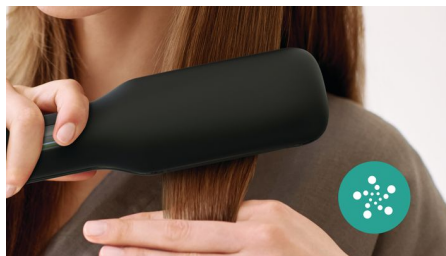


The UniTemp sensor protects your hair from being exposed to unnecessary high heat by providing a more consistent styling temperature for improved performance: Get the same results with a 20°C lower heat setting\*\*. Create the perfect style with healthy-looking ends full of life.

## Keratin infusion

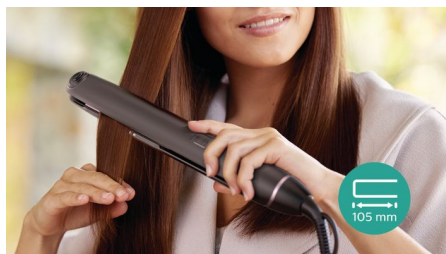
Keratin is the hair's essential ingredient which makes them strong, healthy and gorgeous looking. The ceramic is enriched with keratin to even better take care of your hair.

## Ionic Conditioning



Charged negative ions eliminate static, condition the hair and smooth down the hair cuticles to intensify the hair's shine and glossiness. The result is smooth, frizz-free hair with vibrant shine.

## 105mm long plates



The straightening plates have a professional length of 105mm, leading to faster and easier straightening.

## Ceramic plates



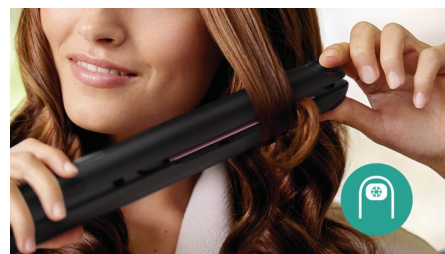
The smooth ceramic coated plates prevent damage to your hair during styling with smooth gliding.

## Digital temperature settings



Digital display with 11 temperature settings up to 230°C gives you absolute control to adjust temperature to your hair type for damage prevention.

## Cool Tip



The tip of the styler is made from a special heat insulating material to keep it cool. You can safely hold it while you're curling to create beautiful curls, waves and bouncy styles.

## Fast heat up time



This styler has a fast heat up time, being ready to use in 30 seconds.

## 1.8 m cord

Convenient to use thanks to the 1.8m power cord length.

# Specifications

## Technical specifications

**Cord length:** 1.8 m

**Heat-up time:** 30 sec

**Heater Type:** High-performance heater

**Maximum temperature:** 230 °C

**Plate size:** 25x105 mm

**Voltage:** 110-240 V

## Features

**Auto shut-off:** After 30 minutes

**Ceramic coating**

**Hanging loop**

**Swivel cord**

## Caring technologies

**Ionic Care**

## Service

**Guarantee:** 2 - Year Worldwide Guarantee

