

PHILIPS

Hair Dryer

3000 Series

2100W

ThermoProtect attachment

6 heat & speed settings



BHD342/10



Powerful drying at a lower temperature with the ThermoProtect attachment

The uniquely-designed ThermoProtect attachment powerfully mixes warm and cool air for everyday care.

Care and protect

- ThermoProtect attachment

Powerful drying

- Powerful drying with 2100W
- Cool air setting to finish your style

Easy to use

- Precise control with 6 heat and speed settings
- Slim nozzle for touch-ups and detailed styling

Highlights

2100W of drying power



This 2100W hair dryer creates powerful airflow for beautiful results every day.

ThermoProtect attachment



The uniquely-designed ThermoProtect attachment powerfully mixes warm and cool air for everyday care. It drops the temperature by 15°C while still drying your hair quickly.

6 heat and speed settings

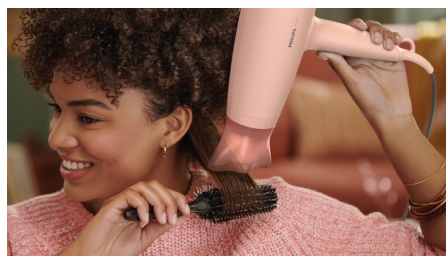
Easily pick the combination of heat and speed that works best for your hair and style. Six different settings ensure precise control for tailored styling.

Cool air setting



The cool air setting provides a burst of cold air to finish and hold your style.

14 mm styling nozzle



The slim nozzle precisely focuses the air, for quick touch-ups and perfecting small details of your style.

Specifications

Caring technologies

ThermoProtect

Attachments

ThermoProtect attachment

Nozzle: 14 mm

Features

Heat/Speed settings: 6

Settings: Cool air setting

Storage hook

Technical specifications

Wattage: 2100 W

Motor: DC

Voltage: 220-240 V

Cord length: 1.8 m

Service

2-year worldwide warranty

