

# PHILIPS

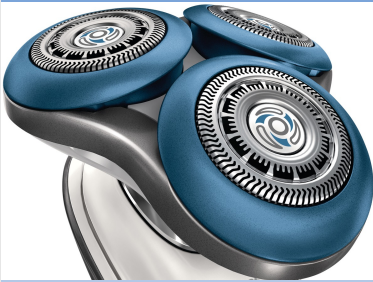
Shaving heads

Shaver series 7000

GentlePrecision blades

Fits S7000 (S7xxx)

Fits Star Wars Shaver SW77xx



SH70/50



## Reset your shaver to new

Change heads every 2 years for best results

Within two years your shaver heads cut 9 million hairs on your face. Replace the shaver heads and get back to 100% performance. Compatible with the Series 7000 Shaver.

### Compatibility

- Replacement heads for Shaver series 7000

### Smooth glide, sensitive shave

- GentleTrack blades enable a close, skin-friendly shave
- Super Lift & Cut shaver for a comfortably close shave

### Easy to use

- Replace your shaving heads in just two steps
- Easy to replace shaving heads
- Reset your shaver after replacing shaving heads
- Reset your shaver to new



[asimpleswitch.com](http://asimpleswitch.com)

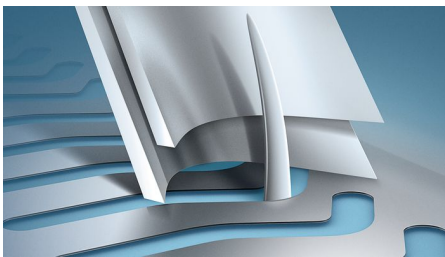
# Highlights

## Compatible with Series 7000



SH70 replacement heads are compatible with Shaver series 7000 (S7xxx) and Star Wars shaver SW7700.

## GentleTrack Precision Blades



The newly designed blades comfortably cut hairs in the most optimal cutting position, thereby reducing irritation caused by tugging and pulling.

## Super Lift & Cut Action



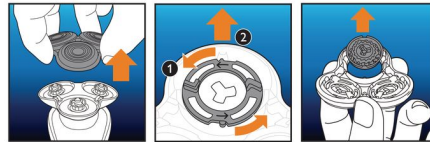
The dual blade system built into our electric shaver lifts hairs to cut comfortably below skin level for a closer shaving experience.

## Replacement reminder



The latest Philips shavers have an inbuilt replacement reminder in the form of a shaving unit symbol. This symbol will light up and indicate you when to replace shaving heads.

## Simple replacement



1. Open the shaver by pressing the "release" button;
2. Remove the retainer by turning the lock counterclockwise;
3. Take out the old shaving heads and carefully insert replacements; check that the heads align exactly in the setting;
4. Replace the retainer and secure it by turning the lock clockwise;
5. When you close the shaving head properly, you will hear it click into place.

## How to reset your shaver



After replacing shaving heads, you can reset the replacement reminder by pressing the on/off button for more than 7 seconds. Otherwise, replacement trigger will turn off automatically after 9 successive shaves.

## Reset your shaver to new



To get back to 100% performance, replace your shaving heads every 2 years.



[asimpleswitch.com](http://asimpleswitch.com)

## Philips Green Logo

Philips Green Products can reduce costs, energy consumption and CO2 emissions. How? They offer a significant environmental improvement in one or more of the Philips Green Focal Areas – Energy efficiency, Packaging, Hazardous substances, Weight, Recycling and disposal and Lifetime reliability.

# Specifications

## Shaving heads

Fits product type: Shaver series 7000 (S7xxx)

Shaving heads per packaging: 3

## Cleaning

Usage: Use cleaning spray HQ110

