

# PHILIPS

Salon Essential

Salon Essential

hairdryer

Europe's  
**No.1**  
Hairdryer Brand  
2006-2011\*

\*Based on independent 2011  
cumulated volume sales data for  
17 European countries

HP8105



## Essential care for hair

Use this hairdryer for the right care of your hair

### Beautifully styled hair

- 1200W gentle drying for beautiful results
- Three flexible settings for more control
- Narrow concentrator for focused airflow

### Less Hair Damage

- Cold air setting for gentle drying

### Easy to use

- Foldable handle for easy portability
- Compact design for easy handling
- Easy storage hook for convenient storage
- 1.6 m power cord

# Highlights

## 1200W



This 1200W hairdryer creates the optimum level of airflow and gentle drying power, for beautiful results every day.

## Three flexible settings



The speed and heat required can be easily adjusted to create the perfect end result. Three flexible settings ensure precise and tailored styling.

## Foldable handle



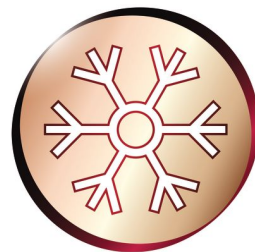
This hairdryer benefits from a foldable handle. The result is a small, compact hairdryer that will pack easily into even the smallest spaces and that you can take virtually anywhere.

## Compact design



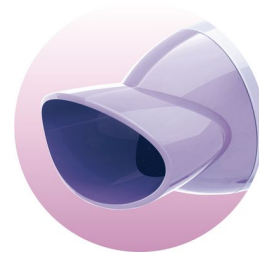
Compact and ergonomic, this hairdryer benefits from a clever modern design. This results in a dryer that is light and easy to handle yet small enough to store virtually anywhere.

## Cold air setting



A cold air setting is a low heat setting that gently dries the hair to minimize damage. This function is suitable for all hair types, but especially for fine, dry or damaged hair. It is a perfect setting for the hot summer season!

## Narrow concentrator



The concentrator works by focusing the flow of air through the opening onto specific areas. This results in precise styling and is great for touch ups or to finish a style.

## Easy storage hook



The rubberised hook is located at the base of the handle and provides another storage option, particularly convenient for use in the home or when staying at a hotel.

# Specifications

## Technical specifications

Power: 1200 W

Voltage: 220-240 V

Cord length: 1.6 m

## Features

Cool shot

Dual voltage

Foldable handle

Hanging loop

## Service

2-year guarantee

