

PHILIPS

Airstyler

1000W

Ceramic

4 attachments

HP4674/00



Everyday the frizz-free, shiny style you desire Salon Airstylist Ion

Say hello to smooth shiny hair on a daily basis. The SalonAirstylist Ion 1000W combines ionic technology, four styling attachments and professional power to banish frizz forever

Beautifully styled hair

- 1000W for professional results
- 38mm thermo brush to smoothen your hair
- Retractable bristle brush for easy curling
- Natural bristle brush for volume and extra shiny hair
- Narrow concentrator for focused airflow

Less Hair Damage

- More Care with ion conditioning for shiny, frizz-free hair
- Ceramic coated brushes for more care
- Cold air setting for gentle drying

Easy to use

- Three flexible settings for more control
- Ergonomic handle for ease of use
- Swivel cord to prevent tangled wires
- Easy storage hook for convenient storage

Highlights

1000W



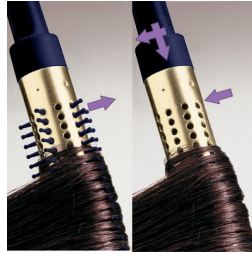
This airstyler has a 1000W heater that creates the optimum level of airflow and gentle drying power.

Ionic Care



Ionic conditioning enables anti-static drying. Charged negative ions eliminate static hair, condition the hair and smooth down the hair cuticles to intensify the hair's shine and glossiness. The result is smooth and frizz-free hair that shines beautifully.

Retractable bristle brush



This easy to use airstyler is both a styling brush and curler in one. The bristles retract into the brush at the touch of a button, so you can easily slide the styler out of your hair. What's left is a beautiful bouncy curl.

38mm thermo brush



The thermo brush has an extra wide diameter of 38mm. The width of the barrel makes it the perfect styling tool for creating smooth styles and waves.

Natural bristle brush



The natural hairs in this bristle brush gently smoothen the hair cuticles to give that extra shine to your hair.

Narrow concentrator



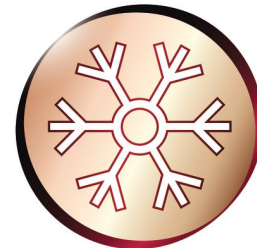
The concentrator works by focusing the flow of air through the opening onto specific areas. This results in precise styling and is great for touch-up or to finish a style.

Three flexible settings



The speed and heat required can be easily adjusted to create the perfect end result. Three flexible settings ensure precise and tailored styling.

Cold air setting



A cold air setting is a low heat setting that gently dries the hair to minimize damage. This function is suitable for all hair types, but especially for fine, dry or damaged hair. It is a perfect setting for the hot summer season!

Specifications

Technical specifications

Wattage: 1000 W

Cord length: 1.8 m

Color/finishing: dark blue and gold

Features

Ceramic coating

Ion conditioning

Swivel cord

Settings: 3 heat/speed settings

Hanging loop

Attachments

Nozzle

Retractable bristle brush

Natural mixed bristle brush

Hair type

End result: Multi-styles

Hair length: Medium, Long

Hair thickness: Thin, Medium, Thick

Service

2-year guarantee

