

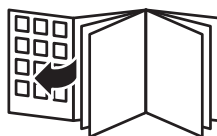
PHILIPS

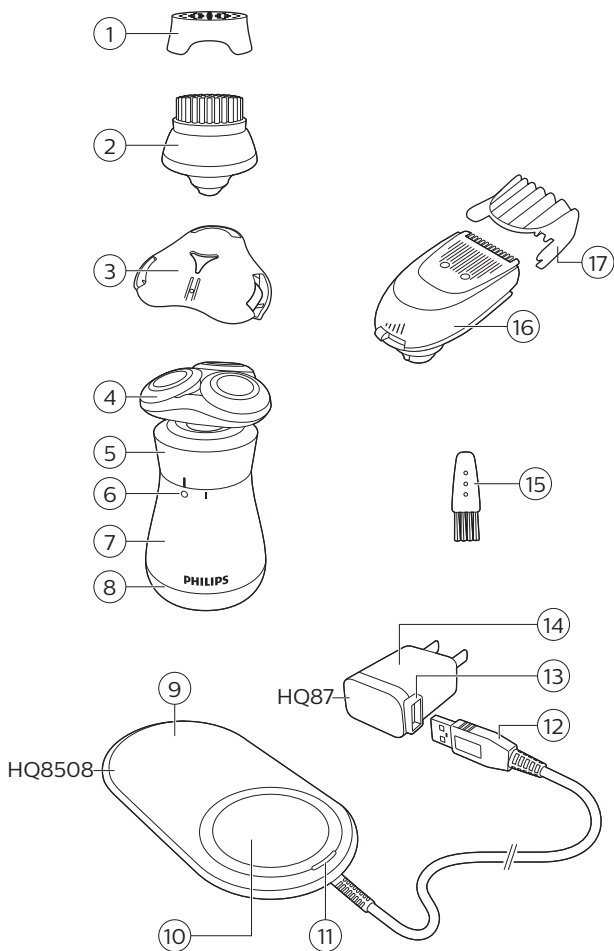
8000 series

S8860



www.philips.com/support/ifu





English 6

简体中文 **30**

General description (Fig.1)

- 1 Protection cap for cleansing brush attachment
- 2 Click-on cleansing brush attachment
- 3 Protection cap for shaving unit
- 4 Click-on shaving unit
- 5 On/off ring
- 6 On/off indications
- 7 Handle
- 8 Battery low indicator
- 9 Charging pad
- 10 Charging platform
- 11 Charging indicator
- 12 USB plug
- 13 Socket for USB plug
- 14 Supply unit
- 15 Cleaning brush
- 16 Click-on beard styler attachment
- 17 Comb for beard styler attachment

Important safety information

Read this important information carefully before you use the appliance and its accessories and save it for future reference. The accessories supplied may vary for different products.

Danger



- Keep the supply unit dry.

Warning



- The appliance is a Class III construction.
- To charge the battery, only use the detachable supply unit (supply unit, type HQ87. Charging pad, type HQ8508) provided with the appliance.
- This appliance can be used by children aged from 8 years and above and persons with reduced physical, sensory or mental capabilities or lack of experience and knowledge if they have been given supervision or instruction concerning use of the appliance in a safe way and understand the hazards involved. Children shall not play with the appliance. Cleaning and user maintenance shall not be made by children without supervision.

- Always check the appliance before you use it. Do not use the appliance if it is damaged, as this may cause injury. Always replace a damaged part with one of the original type.
- Do not open the appliance to replace the rechargeable battery.

Caution

- Never immerse the charging pad in water.
- Always make sure the charging pad is completely dry before you connect it to the wall socket.
- Never use water hotter than 60°C to rinse the shaver.
- Only use this appliance for its intended purpose as shown in the user manual.
- The charging pad is not intended for use in a car. It may interfere with the automotive electronic systems.
- For safety reasons, do not use the shaver while you drive a car.
- For hygienic reasons, the appliance should only be used by one person.

- Never use compressed air, scouring pads, abrasive cleaning agents or aggressive liquids such as petrol or acetone to clean the appliance.
- Water may trickle out of the shaver after your rinse it. This is normal and not dangerous because all electronics are enclosed in a sealed power unit inside the shaver.
- Do not use the supply unit in or near wall sockets that contain an electric air freshener to prevent irreparable damage to the supply unit.

Electromagnetic fields (EMF)

This Philips appliance complies with all applicable standards and regulations regarding exposure to electromagnetic fields.

General



- This shaver is waterproof. It is suitable for use in the bath or shower and for cleaning under the tap.
- The supply unit is suitable for mains voltages ranging from 100 to 240 volts.
- The supply unit transforms 100-240 volts to a safe low voltage of less than 24 volts.

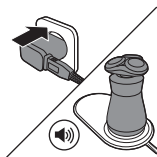
Charging

Charge the appliance before you use it for the first time and when the battery low indicator indicates that the battery is almost empty.

Note: The shaver is Qi compliant.

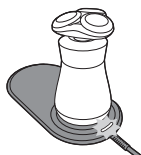
Charging takes approx. 2 hours. A fully charged appliance has a operating time of up to 30 minutes.

Tip: If your smartphone is compliant with Qi charging, you can also use the charging pad to charge your smartphone.



- 1 Put the supply unit in the wall socket and place the appliance onto the charging platform of the charging pad.
 - The charging pad beeps when the appliance is correctly placed onto the charging platform.
- 2 After charging, remove the supply unit from the wall socket.

Battery charging



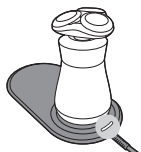
When the shaver is charging, the charging indicator flashes white.

Battery low



When the battery is almost empty, the battery low indicator flashes orange.

Battery fully charged



When the battery is fully charged, the charging indicator lights up white continuously.

Using the appliance

Switching the appliance on and off



- 1 To switch on the appliance, turn the on/off ring anticlockwise to the 'on' indication (I).
- 2 To switch off the appliance, turn the on/off ring clockwise to the 'off' indication (0).

Shaving

Skin adaptation period

Your first shaves may not bring you the result you expect and your skin may even become slightly irritated. This is normal. Your skin and beard need time to adapt to any new shaving system. To allow your skin to adapt to this new appliance, we advise you to shave regularly (at least 3 times a week) and exclusively with this appliance for a period of 3 weeks.

Dry shaving

- 1 Switch on the appliance.
- 2 Move the shaving heads over your skin in circular movements to catch all hairs growing in different directions. Make sure each shaving head is fully in contact with the skin. Exert gentle pressure for a close, comfortable shave.



Note: Do not press too hard, this can cause skin irritation.

- 3 Switch off the appliance.
- 4 Clean the appliance after every use.

Wet shaving

For a more comfortable shave, you can also use this appliance on a wet face with shaving foam or shaving gel. To shave with shaving foam or shaving gel, follow the steps below:



- 1 Apply some water to your skin.
- 2 Apply shaving foam or shaving gel to your skin.



- 3 Rinse the shaving unit under the tap to ensure that the shaving unit glides smoothly over your skin.
- 4 Switch on the appliance.
- 5 Move the shaving heads over your skin in circular movements to catch all hairs growing in different directions. Make sure each shaving head is fully in contact with the skin. Exert gentle pressure for a close, comfortable shave.

Note: Rinse the shaving unit regularly to ensure that it continues to glide smoothly over your skin.

- 6 After use, rinse and dry your face gently and clean the appliance (see 'Cleaning and maintenance').

Note: Make sure you rinse all foam or shaving gel off the appliance.

Using click-on attachments

Removing or attaching the click-on attachment



- 1 Make sure the appliance is switched off.
- 2 Pull the attachment straight off the appliance.

Note: Do not twist the attachment while you pull it off the appliance.



- 3 Insert the lug of the click-on attachment into the slot in the top of the appliance. Then press down the attachment to attach it to the appliance ('click').

Using the click-on beard styler attachment with comb

You can use the beard styler attachment with the comb attached to style your beard at one fixed setting, but also at different length settings. You can also use it to pre-trim any long hairs before shaving for a more comfortable shave.

The length settings on the beard styler attachment correspond to the remaining hair length after cutting and range from 1 to 5mm (3/64 - 3/16in).



- 1 Attach the attachment to the appliance ('click'). Slide the comb straight into the guiding grooves on both sides of the beard styler attachment ('click').

14 English



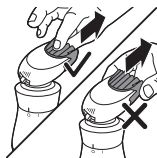
- 2 Press the length selector and then push it to the left or right to select the desired hair length setting.
- 3 Switch on the appliance.



- 4 Move the appliance upwards while you exert gentle pressure. Make sure the front of the comb is in full contact with the skin.
- 5 Clean the attachment after use.

Using the click-on beard styler attachment without comb

You can use the beard styler attachment without the comb to contour your beard, moustache, sideburns or neckline to a length of 0.5mm (1/32 in).



- 1 Pull the comb off the beard styler attachment.

Note: Grab the comb in the center to pull it off the beard styler attachment. Do not pull at the sides of the comb.

- 2 Switch on the appliance.



- 3 Hold the beard styler attachment perpendicular to the skin and move the appliance downwards while you exert gentle pressure.
- 4 Clean the attachment after use.

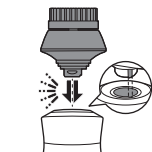
Using the click-on cleansing brush attachment

Use the rotating cleansing brush with your daily cleansing cream. The cleansing brush removes oil

and dirt, contributing to a healthy and oil-free skin. We advise you to use it no more than twice a day.

Do not use the appliance on damaged or irritated skin or on wounds.

- 1 Make sure the appliance is switched off.
- 2 Remove the shaving unit from the appliance and attach the click-on cleansing brush.



- 3 Moisten the cleansing brush with water.

Caution: Do not use the appliance with a dry brush, as this can irritate the skin.



- 4 Moisten your face with water and apply a cleanser to your face.
- 5 Switch on the appliance.



- 6 Gently move the brush across your skin from the nose towards the ear. Do not push the attachment to hard onto the skin to make sure the treatment remains comfortable.



- 7 After approx. 20 seconds, move the appliance to your other cheek and start cleansing this part of your face.

Do not cleanse the sensitive area around your eyes.





- 8 After approx. 20 seconds, move the appliance to your forehead and start cleansing this part of your face. Gently move the brush head from left to right.

Note: We advise you to not overdo the cleansing and to not cleanse any zone longer than 20 seconds.

- 9 After the treatment, rinse and dry your face. Your face is now ready for the next step of your daily skincare routine.
- 10 Clean the cleansing brush after use (see 'Cleaning the click-on attachment').

Cleaning and maintenance

Cleaning the appliance

Clean the shaver after every shave for optimal performance.

- 1 Switch off the appliance.
- 2 Rinse the shaving unit under a warm tap.

Be careful with hot water. Always check if the water is not too hot, to prevent burning your hands.



- 3 Pull the shaving head holder off the bottom part of the shaving unit.

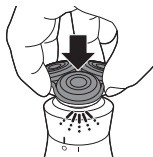


- 4 Rinse the shaving head holder under a warm tap.



- 5 Carefully shake off excess water and let the shaving head holder air-dry completely.

Never dry the shaving unit with a towel or tissue, as this may damage the shaving heads.



- 6 Reattach the shaving head holder to the bottom part of the shaving unit ('click').

Cleaning the charging pad

- 1 Wipe the surface of the charging pad with a slightly damp cloth to remove any dirt.
- 2 Dry the surface with a dry cloth after cleaning.

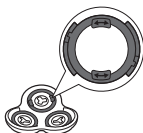
Caution: Always make sure the charging pad is completely dry before connecting to a power outlet.



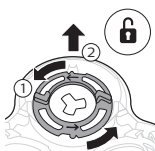
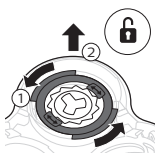
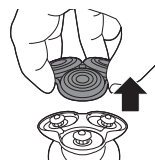
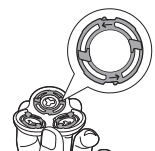
Thorough cleaning

We advise you to clean the shaving heads thoroughly once a month or when the shaver does not shave as well as it used to.

Note: The shaving heads are locked by a blue or an orange retaining ring.



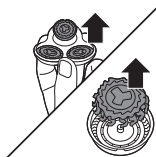
18 English



Follow the correct instructions.

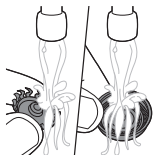
- 1 Switch off the shaver.
- 2 Pull the shaving head holder off the bottom part of the shaving unit.
- 3 Rinse the hair chamber and shaving head holder under the tap.
- 4 Turn the retaining ring anticlockwise and lift it off the shaving head.

Repeat this process for the other retaining rings. Place them aside in a safe place.

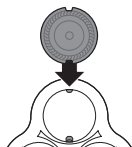


- 5 Remove the shaving heads from the shaving head holder. Each shaving head consists of a cutter and guard.

Note: Do not clean more than one cutter and guard at a time, since they are all matching sets. If you accidentally put a cutter in the wrong shaving guard, it may take several weeks before optimal shaving performance is restored.

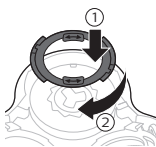


- 6 Clean the cutter and guard under the tap.
7 Shake off excess water.
8 Put the cutter back into the guard.

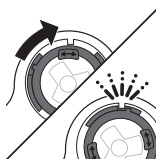


- 9 Place the shaving heads in the shaving head holder.

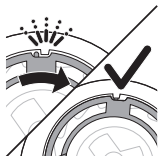
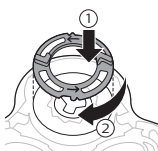
Note: Make sure the notches on both sides of the shaving heads fit exactly onto the projections in the shaving head holder.



- 10 **Blue retaining ring:** Place the retaining ring on the shaving head and turn it clockwise to reattach the retaining ring.



Place the arrows on the ring in line with the projections in the shaving head holder. Turn the ring clockwise until it clicks to indicate that the ring is fixed.



- **Orange retaining ring:** Place the retaining ring on the shaving head and turn it clockwise to reattach the retaining ring. Repeat this process for the other retaining rings.

Each retaining ring has two recesses that fit exactly into the projections of the shaving head holder. Turn the ring clockwise until you hear a click to indicate that the ring is fixed.

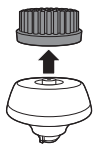
Hold the shaving head holder in your hand when you reinsert the shaving heads and reattach the retaining rings. Do not place the shaving head holder on a surface when you do this, as this may cause damage.

- 11 Attach the shaving head holder to the bottom part of the shaving unit ('click').

Cleaning the click-on attachment

Cleaning the click-on cleansing brush

- 1 Make sure the appliance is switched off.
- 2 Detach the brush head from the attachment holder.



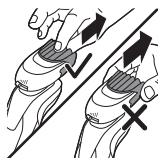
Note: Do not twist the brush head while you pull it off the brush base.



- 3 Clean both parts thoroughly with warm water and mild soap.
- 4 Dry the cleansing brush with a towel.

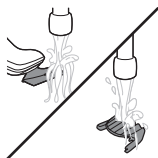
Cleaning the beard styler attachment

Clean the beard styler attachment after each use.



- 1 Pull the comb off the beard styler attachment.

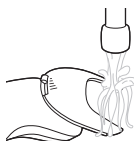
Note: Grab the comb in the center to pull it off the beard styler attachment. Do not pull at the sides of the comb.



- 2 Rinse the cut hairs off the cutting unit with lukewarm water.
- 3 Rinse the cut hairs off the comb.



- 4 Remove the cutting unit from the beard styler attachment. By pushing the cutting unit from the beard styler attachment you can remove any hairs that have accumulated inside the beard styler. You can also rinse the back of the cutting unit.



- 5 Rinse cut hairs out of the beard styler attachment.
- 6 Carefully shake off excess water and leave the comb, cutting unit and beard styler attachment to dry before next usage.



- 7 When the cutting unit is dry attach it to the beard styler attachment.

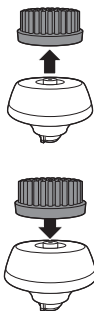


- 8 When the comb is dry attach it to the beard styler attachment.
- 9 For optimal performance, lubricate the teeth of the attachment with a drop of sewing machine oil regularly.

Replacement

Replacing the cleansing brush head

The cleansing brush attachment should be replaced every 3 months or earlier if the brush hairs are bent or damaged (see 'Ordering accessories').



- 1 Switch off the appliance.
- 2 Detach the brush head from the attachment holder.
- 3 Throw away the used brush head (see chapter 'Recycling') .
- 4 Attach the new cleansing brush head to the brush base.

Replacing the shaving heads

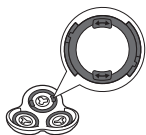


For maximum shaving performance, we advise you to replace the shaving heads every two years. Replace damaged shaving heads immediately.

Always replace the shaving heads with original Philips shaving heads (see 'Ordering accessories').

- 1 To replace the shaving heads, remove the shaving heads from the shaving head holder one by one. See chapter Thorough Cleaning for the instructions on how to remove the retaining rings and shaving heads.

Note: The shaving heads are locked by a blue or an orange retaining ring. Follow the correct instructions.



Ordering accessories

To buy accessories or spare parts, visit **www.shop.philips.com/service** or go to your Philips dealer. You can also contact the Philips Consumer Care Center in your country (see the international warranty leaflet for contact details).

The following accessories and spare parts are available:

- SH90 Philips shaving heads
- RQ560 Philips cleansing brush head
- RQ111 Philips beard styler
- HQ110 Philips Shaving head Cleaning Spray

Recycling

- Do not throw away the product with the normal household waste at the end of its life, but hand it in at an official collection point for recycling. By doing this, you help to preserve the environment.
- This product contains a built-in rechargeable battery which shall not be disposed of with normal household waste. Please take your product to an official collection point or a Philips service center to have a professional remove the rechargeable battery.
- Follow your country's rules for the separate collection of electrical and electronic products and rechargeable batteries. Correct disposal helps prevent negative consequences for the environment and human health.

Warranty and support

If you need information or support, please visit **www.philips.com/support** or read the international warranty leaflet.

Warranty restrictions

The shaving heads (cutters and guards) are not covered by the terms of the international warranty because they are subject to wear.

Troubleshooting

This chapter summarizes the most common problems you could encounter with the product. If you are unable to solve the problem with the information below, visit **www.philips.com/support** for a list of frequently asked questions or contact the Consumer Care Center in your country.

Problem	Possible cause	Solution
The charging indicator on the charging pad lights up red.	Wrong supply unit used or supply unit malfunction (e.g. no original Philips supply unit is used)	Use the original Philips 7.5W supply unit.
	Metal objects are placed on the pad during charging (e.g. paper clip, coins, etc)	Remove any metal objects from the pad.
	Shaver/pad charge malfunction (e.g. either pad or shaver not working properly)	If the first and second solution do not solve the issue, return the appliance to Customer Care Centre in your country.
The appliance does not charge.	The appliance is not placed correctly onto the charging pad.	Place the appliance onto the charging platform of the charging pad. When placed correctly, the charging pad will make a sound and the charging indicator on the charging pad starts flashing white.
	The wall socket into which you have inserted the supply unit is not live.	Verify whether there is a power failure and if the wall socket to which you connect the charging plate is live. If you use a wall socket in a bathroom cabinet, you may need to switch on the light to activate the socket.

Problem	Possible cause	Solution
		If the charging light on the charging plate still does not light up or if the appliance still does not charge, take it to your Philips dealer or the nearest Philips service centre.
The appliance does not work.	The battery is empty.	Charge the appliance.
	The appliance is switched off.	Turn the on/off ring anticlockwise to the 'on' indication (I).
	The shaving head holder is soiled or damaged to such an extent that the motor cannot run.	Clean the shaving heads thoroughly or replace them (see 'Replacement'). Also see 'Hairs or dirt obstruct the shaving heads' for a detailed description of how to clean the shaving heads thoroughly.
The appliance does not switch 'on' after charging		Turn the on/off ring back and forth, the appliance should now switch 'on'.
The appliance does not shave as well as it used to.	The shaving heads are damaged or worn.	Replace the shaving heads.
	Hairs or dirt obstruct the shaving heads.	Clean the shaving heads in the regular way (see 'Cleaning and maintenance') or clean them thoroughly.

Problem	Possible cause	Solution
		To clean the shaving heads thoroughly, remove the shaving heads from the shaving head holder one by one (see 'Replacement'). Then separate the cutter from its guard and rinse each matching set under the tap. After rinsing, place the cutter back into its corresponding guard. Finally, put the shaving heads back into the shaving head holder (see 'Replacement').
I do not know if the cleansing brush is suitable for use on my skin.		The cleansing brush is suitable for all skin types. However, do not use the brush on dry, chapped skin, open wounds, healing wounds, skin recovering from surgery or if you suffer from a skin disease or skin irritation, such as severe acne, sunburn, skin infection, skin cancer, inflammation, eczema, psoriasis etc. Do not use the cleansing brush if you are taking steroid-based medication.

Problem	Possible cause	Solution
The brush feels too harsh on the skin.		If you experience the brush head as too harsh, we advise you to start using the Sensitive or Extra Sensitive brush head. The Sensitive and Extra Sensitive brush heads have softer bristles. We recommend the Sensitive brush head for sensitive skin and the Extra Sensitive brush head for extra sensitive and dry skin.
I don't know with which cleansing products I can use the brush head.		We advise you to cleanse your skin with your favorite cleanser. You can use cleansing gel, foam, oil, milk or lotions. Please do not use scrub cream or gel with particles.
My smartphone does not charge when placed onto the charging pad.	The smartphone is not placed correctly onto the charging pad.	Place the smartphone onto the charging platform of the charging pad. When placed correctly, the charging pad will make a sound and the charging indicator on the charging pad starts flashing white.
	The wall socket into which you have inserted the adapter is not live.	Verify whether there is a power failure and if the wall socket to which you connect the charging plate is live. If you use a wall socket in a bathroom cabinet, you may need to switch on the light to activate the socket.

Problem	Possible cause	Solution
	The smartphone is not compatible with Qi charging.	Your smartphone might not be compatible with Qi charging; contact smartphone's manufacturer or retailer.
The beard styler does not trim as well as it used to.	Hairs or dirt obstruct the cutting element.	Clean the beard styler.
	The trimming element needs to be lubricated.	Lubricate the teeth of the beard styler attachment with a drop of sewing machine oil.
The beard styler stopped working.	The beard styler is damaged or worn.	Replace the beard styler attachment.

一般说明（图 1）

- 1 洁面刷附件保护盖
- 2 卡入式洁面刷附件
- 3 剃须刀头部件保护盖
- 4 卡入式剃须刀头部件
- 5 开/关环
- 6 开/关指示
- 7 手柄
- 8 电池电量不足指示灯
- 9 充电基座
- 10 充电架
- 11 充电指示灯
- 12 USB 插头
- 13 USB 插头接口
- 14 电源部件
- 15 清洁刷
- 16 卡入式胡须造型器附件
- 17 适用于胡须造型器附件的修剪梳

重要安全信息

使用本产品及其附件之前，请仔细阅读本重要信息，并妥善保管以供日后参考。随附的附件可能因产品而异。

危险



- 保持电源部件干燥。
- 警告符号注释：禁止在打开的水龙头下进行清洗。

警告

- 此符号表示该产品为 III 级构造。要给电池充电，请仅使用该产品随附的可拆卸电源部件（电源部件，类型 HQ87。充电基座，类型 HQ8508）。
- 电源部件中包含一个变压器。请勿自行更换电源部件的插头，否则将导致严重后果。
- 产品不建议由有肢体、感官或精神能力缺陷或缺少使用经验和知识的人（包括儿童）使用，除非有负责他们安全的人对他们进行与产品使用有关的监督或指导。
- 请照看好儿童，本产品不能用于玩耍。
- 使用前，请务必检查产品。请勿使用损坏的产品，否则可能对人体造成伤害。请务必用原装型号更换损坏的部件。
- 切勿拆开本产品更换充电电池。

警告

- 切勿将充电基座浸入水中。
- 务必确保充电基座完全干燥后，再将其连接至电源插座。
- 切勿使用温度高于 60°C 的热水冲洗剃须刀。
- 只能将本产品用于用户手册中所示的原定用途。
- 此设备不建议在行车中充电。在某些情况下，它可能会干扰汽车电子系统。
- 出于卫生的目的，本产品只能供一个人使用。

- 切勿使用压缩气体、钢丝绒、研磨性清洁剂或腐蚀性液体（例如汽油或丙酮）来清洁产品。
- 请勿在包含电动空气清新器的墙壁插座上或其周围使用电源部件，以免电源部件受到不可修复的损坏。

电磁场 (EMF)

本 Philips 产品符合所有有关暴露于电磁场的适用标准和法规。

概述



- 符号注释：适合于在洗澡或淋浴时使用。允许在盛水的浴缸、淋浴、洗脸盆或其他器皿附近使用本器具。
- 该剃须刀具有防水性能。适合在沐浴或淋浴时使用，也可以放在水龙头下清洗。
- 电源部件适合在 100 - 240 伏的电源电压下工作。
- 该电源部件可将 100-240 伏的电压转换为 24 伏以下的安全低电压。

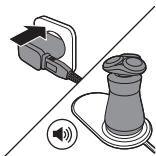
充电

第一次使用本产品之前，以及当电池电量不足指示灯指示电池电量快要耗尽时，请先为本产品充电。

注意：剃须刀兼容 Qi。

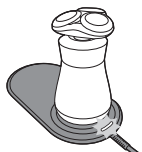
充电约需 2 小时。充满电的产品最长可使用 30 分钟。

提示：如果您的智能手机与 Qi 充电兼容，您还可以使用充电基座为您的智能手机充电。



- 1 将电源部件插入插座，并将本产品放到充电基座的充电架上。
 - 当本产品正确放到充电架上时，充电基座会发出短促的信号音。
- 2 充电后，请断开电源部件与插座的连接。

电池正在充电



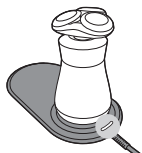
剃须刀充电时，充电指示灯会呈白色闪烁。

电池电量不足



当电池的电量几乎耗尽时，电池低电量指示灯会呈橙色闪烁。

电池已完全充满



电池充满电时，充电指示灯将呈白色持续亮起。

使用本产品

打开或关闭产品



- 1 要打开本产品，请将开/关环逆时针转至“开”指示处 (I)。
- 2 要关闭本产品，请将开/关环顺时针转至“关”指示处 (O)。

剃须

皮肤适应期

前几次剃须可能不会带给您预期效果，并且您的皮肤可能会受到轻度刺激。这是正常的。您的皮肤和胡须需要时间适应任何新的剃须系统。为了让您的皮肤适应这款新产品，我们建议您在 3 周时间内定期（至少每周 3 次）仅使用本产品剃须。

干剃



- 1 启动产品。
- 2 让剃须刀头在您的皮肤上作迂回运动，以刮剃向不同方向生长的所有须发。轻轻按压，以获取舒适贴面的剃须感受。

注意：不要用力按压剃须刀，这样做可能会导致皮肤受刺激。

- 3 关闭产品。
- 4 每次使用后均应清洁产品。

湿剃

要获得更舒适的剃须体验，您也可以先用剃须泡沫或剃须啫喱将脸弄湿，然后再用本产品进行剃须。要用剃须泡沫或剃须啫喱剃须，请按照下面的步骤执行操作：



- 1 用水润湿皮肤。
- 2 在皮肤上涂抹剃须泡沫或剃须啫喱。



- 3 在水龙头下冲洗一下剃须刀头部件，确保剃须刀头部件可以在您的皮肤上顺畅滑动。
- 4 启动产品。
- 5 让剃须刀头在您的皮肤上作迂回运动，以刮剃向不同方向生长的所有须发。轻轻按压，以获取舒适贴面的剃须感受。

注意：定期冲洗剃须刀头部件，确保其能够继续在您的皮肤上顺畅滑动。

- 6 使用后，冲洗并轻轻擦干脸部，然后清洁本产品（请参见“清洁和保养”）。

注意：确保冲洗干净本产品上的所有泡沫或剃须啫喱。

使用卡入式附件

拆卸或安装卡入式附件

- 1 确保产品电源已关闭。

- 2 将附件竖直抽离产品。



注意：将附件从产品上抽出时，不要旋转。

- 3 将卡入式附件的凸缘插入本产品顶部的槽内。然后，按下附件将其安装到本产品上（可听到“咔哒”一声）。



使用带修剪梳的卡入式胡须造型器附件

您可以使用带修剪梳的胡须造型器附件以固定设置（也可使用不同的长度设置）修整胡须。您也可以在剃须前用其预先修剪较长须发，以实现更舒适的剃须体验。胡须造型器附件的长度设置对应修剪后剩余的须发长度，范围为 1 到 5 毫米（3/64 - 3/16 英寸）。

- 1 将附件安装到产品上（可听到“咔哒”一声）。将修剪梳直接滑入胡须造型器附件两侧的导槽中（可听到“咔哒”一声）。





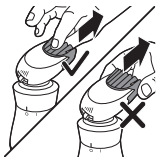
- 2 按下长度选择器，然后将其向左或向右推动以选择所需的须发长度设置。
- 3 启动产品。



- 4 向上移动产品，同时轻轻按压。确保修剪梳的正面与皮肤完全接触。
- 5 使用后要清洁附件。

使用不带修剪梳的卡入式胡须造型器附件

您可以使用不带修剪梳的胡须造型器附件将胡须、须髥、鬓角或颈部轮廓修整至 0.5 毫米（1/32 英寸）的长度。



- 1 将修剪梳抽离胡须造型器附件。

注意：抓住修剪梳的中间位置，将其抽离胡须造型器附件。不要拉拔修剪梳的侧面。

- 2 启动产品。

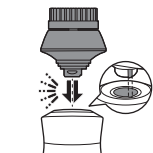


- 3 将胡须造型器附件垂直放在皮肤上，向下移动产品，同时轻轻按压。
- 4 使用后要清洁附件。

使用卡入式洁面刷附件

将旋转洁面刷与日常洁面产品一起使用。洁面刷可去除油脂和污垢，焕发健康无油脂的肌肤。建议每天使用本产品不超过 2 次。

请不要在受伤或发炎的皮肤或伤口上使用本产品。



- 1 确保产品电源已关闭。
- 2 从本产品上取下剃须刀头部件，然后装上卡入式洁面刷。

- 3 用水湿润洁面刷。

警告：切勿在洁面刷干燥的情况下使用产品，否则可能会刺激皮肤。

- 4 用水润湿面部，并将洁面乳涂抹到脸上。
- 5 启动产品。

- 6 在鼻子至耳朵的皮肤上轻轻地移动刷头。请勿用力地将附件压在皮肤上，以确保舒适护理。

- 7 约 20 秒后，可将本产品移至另一侧面颊，开始清洁这部分面部皮肤。

切勿清洁眼部周围的敏感区域。



- 8 约 20 秒后，可将本产品移至前额，开始清洁这部分面部皮肤。轻轻将刷头从左向右移动。

注意：建议您不要过度清洁，任何部位的清洁时间不要超过 20 秒钟。

- 9 护理后，洗脸并擦干。现在您可以进行日常面部护肤的下一步了。
- 10 使用 (请参见 '清洁卡入式附件')后，请清洁洁面刷。

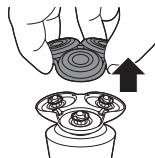
清洁和保养

清洁产品

每次剃须后请清洁剃须刀，以获得出色性能。

- 1 关闭产品。
- 2 用温水冲洗剃须刀头部件。

使用热水要当心。切记先检查水温是否太高，以防烫手。



- 3 将剃须刀头支架从剃须刀头部件的底部抽离。

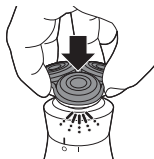


- 4 用温水冲洗剃须刀头支架。



- 5 小心地甩掉多余水分并彻底晾干剃须刀头支架。

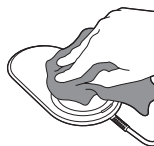
不要用毛巾或纸巾擦拭剃须刀头部件，因为这样可能会损坏剃须刀头。



- 6 将剃须刀头支架重新装回剃须刀头部件的底部（可听到“咔哒”一声）。

清洁充电基座

- 1 使用微湿的布擦拭充电基座表面以清除所有尘垢。



- 2 清洁后，用干布干燥表面。

警告： 务必确保充电基座完全干燥，然后再连接至电源插座。

彻底清洁

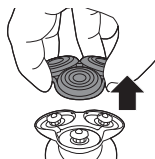
我们建议您每个月彻底清洁一次剃须刀头，或在剃须效果没有以前好时进行清洁。

注意：剃须刀头被蓝色或橙色固定环锁住。



按照正确的说明操作。

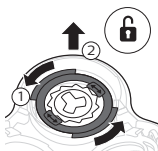
- 1 关闭剃须刀。



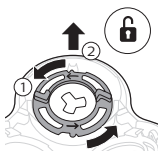
- 2 将剃须刀头支架从剃须刀头部件的底部抽离。



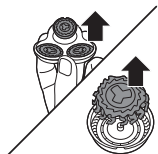
- 3 在水龙头下冲洗胡茬储藏室和剃须刀头支架。



- 4 逆时针转动固定环，然后将它从剃须刀头中取出。

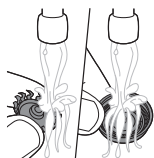


对其他固定环重复此过程。将其存放在安全的地方。

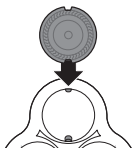


- 5 从剃须刀头支架上卸下剃须刀头。每个剃须刀头都包括刀片和网罩。

注意：不要同时清洁多组刀片和网罩，因为它们都是相互匹配的。如果不小心将刀片装到了错误的网罩上，则需要数周时间才能恢复产品的出色剃须性能。

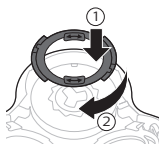


- 6 在水龙头下清洁刀片和网罩。
- 7 甩掉多余的水份。
- 8 将刀片重新装回至网罩。

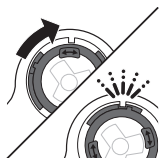


- 9 将剃须刀头装到剃须刀头支架中。

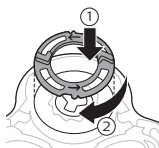
注意：确保剃须刀头两侧的槽口正好卡入剃须刀头支架上的凸起部位。



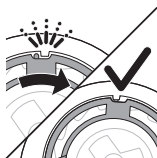
- 10 **蓝色固定环：** 将固定环放在剃须刀头上，顺时针旋转以重新安装固定环。



将剃须刀头上的箭头与剃须刀头支架上的凸起部位对齐。顺时针旋转固定环，直至听到“咔哒”一声，表明固定环已就位。



- **橙色固定环：** 将固定环放在剃须刀头上，顺时针旋转以重新安装固定环。对其他固定环重复此过程。



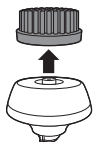
每个固定环均具有两个凹槽，正好能够装入剃须刀头支架的凸缘上。顺时针旋转固定环，直至听到“咔哒”一声，表明固定环已就位。

当您重新插入剃须刀头并重新安装固定环时，请将剃须刀头支架握在手中。当您执行此操作时，切勿将剃须刀头支架放在平面上，否则可能会造成损坏。

- 11 将剃须刀头支架安装到剃须刀头部件的底部（可听到“咔哒”一声）。

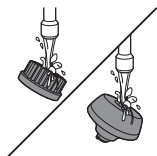
清洁卡入式附件

清洁卡入式洁面刷



- 1 确保产品电源已关闭。
- 2 从附件基座上卸下刷头。

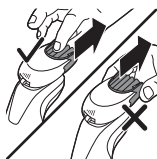
注意：将刷头从洁面刷基座上拉下时，不要旋转刷头。



- 3 用温水和中性肥皂彻底清洁两个部件。
- 4 用毛巾擦干洁面刷。

清洁胡须造型器附件

每次使用后都要清洁胡须造型器附件。



- 1 将修剪梳抽离胡须造型器附件。

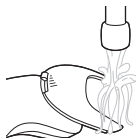
注意：抓住修剪梳的中间位置，将其抽离胡须造型器附件。不要拉拔修剪梳的侧面。



- 2 用温水冲洗修剪部件上的须发。
- 3 冲洗修剪梳上的须发。



- 4 从胡须造型器附件中取下修剪部件。按下胡须造型器附件中的修剪部件，您可以清理胡须造型器内积累的须发。您也可以冲洗修剪部件的背面。



- 5 冲洗出胡须造型器附件中的须发。
- 6 小心甩干多余的水份，并晾干修剪梳、修剪部件和胡须造型器附件，以备下次使用。



- 7 修剪部件晾干后，请将其安装到胡须造型器附件。

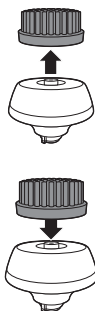


- 8 修剪梳晾干后，请将其安装到胡须造型器附件。
- 9 为达到最佳效果，请定期用一滴缝纫机油润滑附件齿部。

更换

更换洁面刷头

每 3 个月应更换一次刷头，或当刷毛在更短时间内出现弯曲或损坏 (请参见 '订购配件') 时更换。



- 1 关闭产品。
- 2 从附件基座上卸下刷头。
- 3 丢弃用过的刷头（请参阅“回收”一章）。
- 4 将新的洁面刷刷头连接到洁面刷基座。

更换剃须刀头



为达到最佳剃须效果，建议每两年更换一次剃须刀头。立即更换损坏的剃须刀头。

务必使用原装飞利浦剃须刀头（请参见“订购配件”）进行更换。

- 1 要更换剃须刀头，请将剃须刀头从剃须刀头支架上逐一卸下。有关如何拆卸固定环和剃须刀头，请参阅“彻底清洁”一章中的说明。

注意：剃须刀头被蓝色或橙色固定环锁住。按照正确的说明操作。





订购配件

要购买附件或备件，请访问 www.shop.philips.com/service 或联系您的飞利浦经销商。您还可以联系所在国家/地区的飞利浦客户服务中心（请参阅全球保修卡了解详细联系信息）。

可选配以下附件和备件：

- SH90 飞利浦剃须刀头
- RQ560 飞利浦洁面刷头
- RQ111 飞利浦胡须造型器
- HQ110 飞利浦剃须刀头清洁喷雾剂

回收

- 弃置本产品时，请不要将其与一般生活垃圾放在一起，应将其交给政府指定的回收中心。这样做将有利于环保。
- 此产品包含内置充电电池：请勿将充电电池与一般生活垃圾一起弃置。请您将产品送到官方收集中心或飞利浦服务中心，请专业人士移除充电电池。
- 遵循您的国家/地区有关分类回收电子电气产品和充电电池的规定。正确弃置产品有助于避免对环境和人类健康造成不良后果。

部件名称	产品中有害物质的名称及含量					
	有害物质					
	铅 (Pb)	汞 (Hg)	镉 (Cd)	六价铬 (Cr (VI))	多溴联苯 (PBB)	多溴二苯醚 (PBDE)
PCB's 集成电路板	X	O	O	O	O	O
Electrical contact pins 电接触片	X	O	O	O	O	O
Power plug 电源插头	X	O	O	O	O	O
Internal metal parts 内部金属件	X	O	O	O	O	O
本表格依据SJ/T 11364的规定编制。						
O: 表示该有害物质在该部件所有均质材料中的含量均在GB/T 26572规定的限量要求以下。						
X: 表示该有害物质至少在该部件的某一均质材料中的含量超出GB/T 26572规定的限量要求。						

保修和支持

如需信息或支持，请访问 www.philips.com/support 或阅读国际保修卡。

保修条款

由于剃须刀头（刀片和网罩）属于易磨损物品，因此不在国际保修条款的涵盖范围之列。

故障处理方法

本章归纳了使用本产品最常遇到的问题。如果您无法根据以下信息解决问题，请访问 www.philips.com/support 查阅常见问题列表，或联系您所在国家/地区的客户服务中心。

问题	可能的原因	解决方法
充电基座上的充电指示灯以红色亮起。	使用了错误的电源部件或电源部件故障（如没有使用原装飞利浦电源部件）	使用原装飞利浦 7.5W 电源部件。
	充电期间，有金属物体放置在充电基座上（如纸夹、硬币等）	从充电基座上取下所有金属物体。
	剃须刀/充电基座充电故障（如充电基座或剃须刀不能正常工作）	如果前两个解决方案不能解决此问题，则将本产品返回您所在国家的客户服务中心。

问题	可能的原因	解决方法
产品不能充电。	本产品未正确放到充电基座上。	将本产品放到充电基座的充电架上。正确放置时，充电基座将发出信号音，且充电基座上的充电指示灯开始呈白色闪烁。
	电源部件插入的电源插座未通电。	检查是否存在电源故障，以及连接充电板的插座是否通电。如果您使用浴室柜中的墙壁插座，则可能需要通过开灯来接通插座电源。
		如果充电板的充电指示灯仍未亮起，或者如果产品仍无法充电，请将其送往飞利浦经销商处或附近的飞利浦服务中心。
产品不能工作。	电池已耗尽。	为产品充电。
	产品已关闭电源。	将开/关环逆时针转至“开”指示处 (I)。
	剃须刀头支架被污染或损坏，导致马达无法运行。	彻底清洁剃须刀头或将其 (请参见‘更换’) 更换。有关如何彻底清洗剃须刀头的详细说明，另请参阅“毛发或污垢堵塞了剃须刀头”。
充电后，产品无法“打开”		来回切换开/关环，现在应该可以“打开”产品。
产品的剃须效果没有以前好。	剃须刀头已损坏或磨损。	更换剃须刀头。
	毛发或污垢堵塞了剃须刀头。	对剃须刀头进行常规式 (请参见‘清洁和保养’) 或彻底清洁。

问题	可能的原因	解决方法
我不知道本洁面刷是否适合我的皮肤。		要彻底清洁剃须刀头，请将剃须刀头从剃须刀头支架上逐一（请参见“更换”）卸下。然后，分离刀片和网罩，并在水龙头下冲洗每个刀片和网罩套装。冲洗后，将刀片放回对应的网罩中。最后，将剃须刀头装回到剃须刀头支架（请参见“更换”）中。
感觉刷头太粗糙。		本洁面刷适合各种皮肤类型。但是，如果皮肤存在干燥、皴裂、开口伤处，正在愈合的伤口、处于术后恢复期，或者存在严重粉刺、晒伤、皮肤感染、皮肤癌、发炎、湿疹、牛皮癣等皮肤病或皮肤过敏症状，请勿使用本洁面刷。如果您正在服用类固醇类药物，请勿使用本洁面刷。
我不知道刷头可与哪款清洁产品配合使用。		如果感觉刷头太粗糙，建议您先使用敏感或超敏感刷头。敏感和超敏感刷头的刷毛更柔软。建议您在敏感皮肤上使用敏感刷头，在超敏感和干性皮肤上使用超敏感刷头。
我的智能手机放在充电基座上无法充电。	智能手机未正确放到充电基座上。	建议您使用自己喜爱的洁面乳清洁肌肤。您可以使用清洁凝胶、泡沫、精油、牛奶或乳液。请勿使用带微粒的磨砂膏或凝胶。
		请将智能手机放到充电基座的充电架上。正确放置时，充电基座将发出信号音，且充电基座上的充电指示灯开始呈白色闪烁。

问题	可能的原因	解决方法
	适配器插入的电源插座未通电。	检查是否存在电源故障，以及连接充电板的插座是否通电。如果您使用浴室柜中的墙壁插座，则可能需要通过开灯来接通插座电源。
	智能手机与 Qi 充电不兼容。	您的智能手机可能与 Qi 充电不兼容，请联系智能手机的制造商或零售商。
胡须造型器的修剪效果没有以前好。	毛发或污垢堵塞了修剪部件。	清洁胡须造型器。
	修剪部件需要润滑。	使用一滴缝纫机油润滑胡须造型器附件齿部。
胡须造型器停止工作。	胡须造型器已损坏或磨损。	更换胡须造型器附件。

PHILIPS

产品：飞利浦电动剃须刀
型号：S8860

额定电压：220V ~

额定频率：50Hz

额定输入功率：11 W

产地：中国广东珠海

生产日期：请见产品本体



珠海经济特区飞利浦家庭电器有限公司
中国珠海市三灶镇琴石工业区
全国顾客服务热线：4008 800 008

本产品根据国标 GB4706.1-2005,
GB4706.9-2008制造

保留备用

发行日期：01/04/2016

— |

| —

— |

| —

© 2018 Koninklijke Philips N.V.

All rights reserved

保留所有权利

4222.002.5918.3 (21/3/2018)

