

在以下网站注册并获得支持

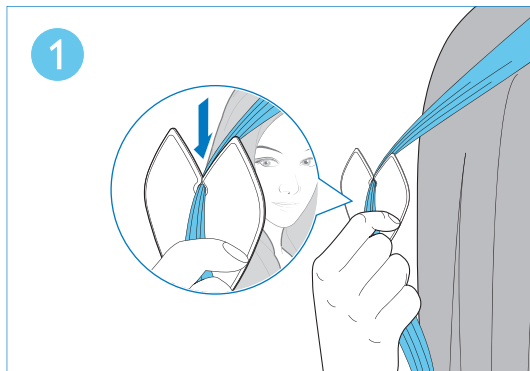
www.philips.com.cn/welcome

BHB878

EN Quick start guide

ZH-CN 快速入门指南

PHILIPS

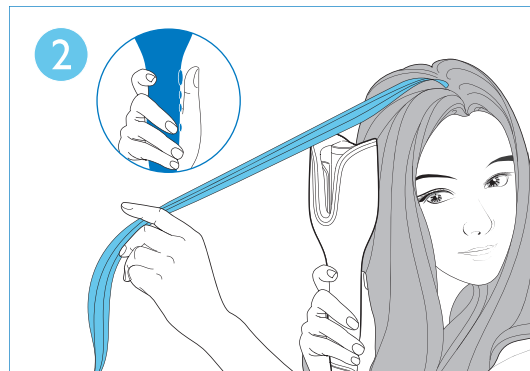


EN

Determine the amount of hair by using the hair sectioning accessory. Start with a hair strand of 4 cm in width.

ZH-CN

使用头发分撮配件，确定发量。
取一缕宽约 4 厘米的头发。



EN

Hold the appliance vertically with the open area of the curling chamber facing away from the scalp and the buttons facing you.

ZH-CN

垂直握住本产品，卷发室的开口区域背向头部，按钮朝向您。

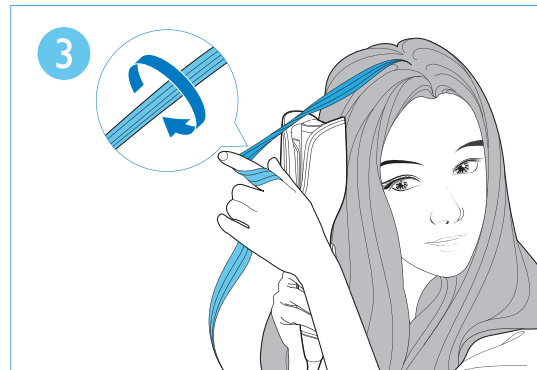


© 2018 Koninklijke Philips N.V.

保留所有权利

3000 028 51761



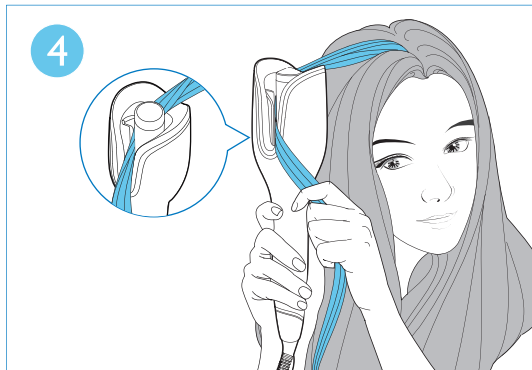


EN

Twist the hair ONCE to make it easier to put it into the opening of the curling chamber.

ZH-CN

将发缕旋转一圈，可更轻松地将其放入卷发室的开口中。

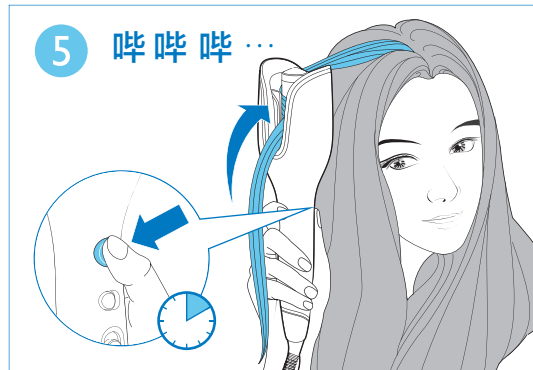


EN


Place the hair strand on the recess area. Allow the hair to pass through the curling chamber, while holding the hair strand downwards.

ZH-CN


将发缕放在凹面区域上。让头发通过卷发室，同时向下拉住发缕。

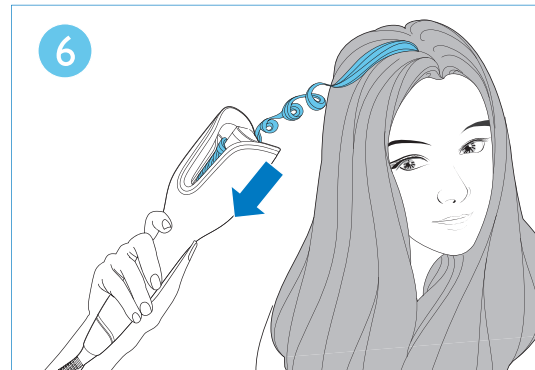


EN

PRESS and continuously HOLD the curling button . The hair strand will be automatically curled into the chamber. You will hear beeps at regular intervals followed by continuous beeps. DO NOT release the curling button until the continuous beeps stops.

ZH-CN

持续按住卷发按钮 。这缕头发将自动卷入卷发室。每隔一段时间便会听到蜂鸣音，接着是连续的蜂鸣音。不要松开卷发按钮，直至连续的蜂鸣音停止。



EN

Remove your finger from the curling button and move the product away from you to release hair from the chamber.

ZH-CN

松开卷发按钮，向远离自己的方向移动卷发器，使头发从卷发室中释放出来。