

BHS673



User manual

PHILIPS



Specifications are subject to change without notice
© 2016 Koninklijke Philips N.V.
All rights reserved.

3140 035 42551




English

Congratulations on your purchase, and welcome to Philips!
To fully benefit from the support that Philips offers, register
your product at www.philips.com/welcome.

1 Important

Read this user manual carefully before you use the
appliance and keep it for future reference.

- **WARNING:** Do not use this appliance near water.
- When the appliance is used in a bathroom, unplug it after use since the proximity of water presents a risk, even when the appliance is switched off.

- **WARNING:** Do not use this appliance near bathtubs, showers, basins or other vessels containing water. 
- Always unplug the appliance after use.
- If the mains cord is damaged, you must have it replaced by Philips, a service centre authorised by Philips or similarly qualified persons in order to avoid a hazard.
- This appliance can be used by children aged from 8 years and above and persons with reduced physical, sensory or mental capabilities or lack of experience and knowledge if they have been given supervision or instruction concerning use of the appliance in a safe way and understand the hazards involved. Children shall not play with the appliance. Cleaning and user maintenance shall not be made by children without supervision.
- Before you connect the appliance, ensure that the voltage indicated on the appliance corresponds to the local power voltage.
- Do not use the appliance for any other purpose than described in this manual.
- Do not use the appliance on artificial hair.
- When the appliance is connected to the power, never leave it unattended.
- Never use any accessories or parts from other manufacturers

- or that Philips does not specifically recommend. If you use such accessories or parts, your guarantee becomes invalid.
- Do not wind the mains cord round the appliance.
- Wait until the appliance has cooled down before you store it.
- Pay full attention when using the appliance since it could be extremely hot. Only hold the handle as other parts are hot and avoid contact with the skin.
- Always place the appliance with the stand on a heat-resistant, stable flat surface. The hot heating plates should never touch the surface or other flammable material.
- Avoid the mains cord from coming into contact with the hot parts of the appliance.
- Keep the appliance away from flammable objects and material when it is switched on.
- Never cover the appliance with anything (e.g. a towel or clothing) when it is hot.
- Only use the appliance on dry hair. Do not operate the appliance with wet hands.
- Keep the heating plates clean and free of dust and styling products such as mousse, spray and gel. Never use the appliance in combination with styling products.
- The heating plates has coating. This coating might slowly wear away over time. However, this


does not affect the performance of the appliance.

- If the appliance is used on color-treated hair, the heating plates may be stained.
- Always return the appliance to a service centre authorized by Philips for examination or repair. Repair by unqualified people could result in an extremely hazardous situation for the user.
- Do not insert metal objects into openings to avoid electric shock.
- Do not pull on the power cord after using. Always unplug the appliance by holding the plug.

Electromagnetic fields (EMF)

This Philips appliance complies with all applicable standards and regulations regarding exposure to electromagnetic fields.

Environment

Do not throw away the appliance with the normal household waste at the end of its life, but hand it in at an official collection point for recycling. By doing this, you help to preserve the environment. 

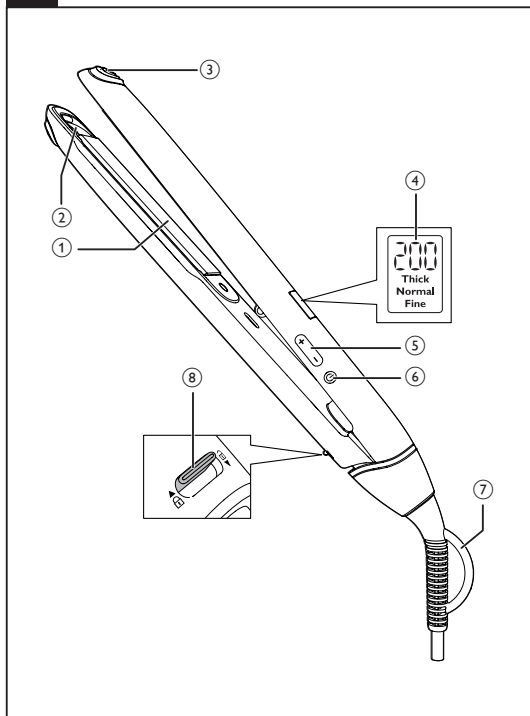
2 Guarantee and service

If you need information e.g. about replacement of an attachment or if you have a problem, please visit the Philips website at www.philips.com/support or contact the Philips Customer Care Centre in your country (you find its phone number in the worldwide guarantee leaflet). If there is no Consumer Care Centre in your country, go to your local Philips dealer.

3 Introduction

The straightener was designed to protect your fragile ends. The innovative SplitStop technology is a combination of a UniTemp sensor and smooth ceramic plates, leading to split end prevention. This gives advanced protection to your hair and therefore keeps your hair protected and shinier. We've already turned the sensor on, so you can enjoy maximum protection right from the start.

1



4 Preparation for use

- Wash hair with shampoo and conditioner and blow dry it.
- Use heat protection product and comb your hair with large-toothed comb.
- Use the straightener only when your hair is dry.
- Frequent users are recommended to use heat protection products when straightening.
- Ensure that you select a temperature setting that is suitable for your hair. Please refer to the Hair Type table below. Always select a lower setting when you use the straightener for the first time.

Hair Type	Temperature Setting
Thick	200 °C to 230 °C
Normal	170 °C to 190 °C
Fine	130 °C to 160 °C

5 Straighten your hair (Fig.2)

- 1 Connect the plug to a power supply socket.
- 2 Slide the closing lock (8) downwards to unlock the appliance.
- 3 Press and hold the button (6) until the display screen lights up.
 - ↳ The default temperature setting 160°C (4) is displayed.
- 4 Press the + or - button (5) to select your desired temperature setting.
 - ↳ When the appliance is heating up, the temperature digits will blink. The digits stop blinking when the heating plates have reached the selected temperature.

↳ The appliance will heat up in 30 seconds.

- 5 The ion function (2) is activated when the appliance is switched on, which provides additional shine and reduces frizz.

↳ You may smell a special odor and hear a sizzling noise. It is common because they are caused by the ion generator.

- 6 Comb your hair and then start by clipping your blow dried hair into sections not wider than 5cm.

Note: For thicker hair, it is suggested to create more sections.

- 7 Place one section of hair in between the heating plates (1) and press the handles firmly together.
- 8 Slide the straightener down the length of the hair in a single motion (max. 5 sec) from root to end, without stopping to prevent overheating.
- 9 To straighten the rest of your hair, repeat steps 6 to 8 until you achieve the desired look.
- 10 To finish your hair styling, mist with a shine spray or flexible hold hair spray.

Tip: Do not brush your hair while setting your hair style.

6 Curl your hair (Fig.3)

To create inward/outward curls:

- 1 Take a hair strand and clip up the rest of hair.
- 2 Start near the hair roots. Place the strand of hair between the heating plates (1).
- 3 (Fig.3-A) Turn the straightener inwards toward your face and make a 360-degree turn.
(Fig.3-B) To create outward curls, turn the straightener away from your face and make a 360-degree turn.

Notes:

- Do not touch the surface above or below the heating plates as they are hot. If necessary, use cool tip only.
- The beginning section of your hair should be completely wrapped around the straightener before sliding the hair down.
- 4 Your hair strand is fully wrapped around both sides of the straightener. Make sure the hair tip is sticking out.
- 5 Pull the straightener downwards along the hair slowly. Ensure the strand of hair is not slipping off the plates.

Tips:

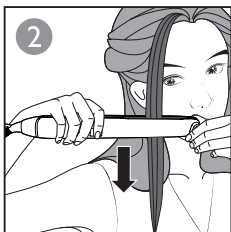
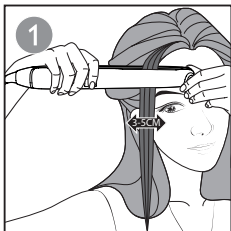
- You may use the cool tip (3) to assist in the 360-degree turn.
- Hold the straightener horizontally (parallel to the floor) so that the hair won't fall out.
- You may use the cool tip to fix your hair strand in place.
- Gently relax the grip on the handle as you rotate so that you can easily turn the straightener.

After use:

- 1 Switch off the appliance and unplug it.
- 2 Place it on a heat-resistant surface until it cools down.
- 3 Clean the appliance and heating plates by damp cloth.
- 4 Close the heating plates (1) and slide the closing lock (8) to lock the appliance.
- 5 Keep it in a safe and dry place, free of dust. You can also hang it with the hanging loop (7).

Note: The appliance has auto shut-off function. It switches off automatically after 30 minutes without clamping.

2



3

