

PHILIPS

S588, S586



© 2018 Koninklijke Philips N.V.

All rights reserved

保留所有权利

3000.016.8085.2 (27/12/2018)

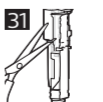
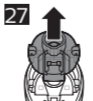
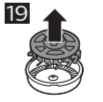
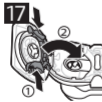
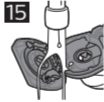
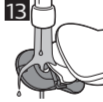
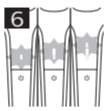
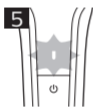
> 75% 循环再造纸

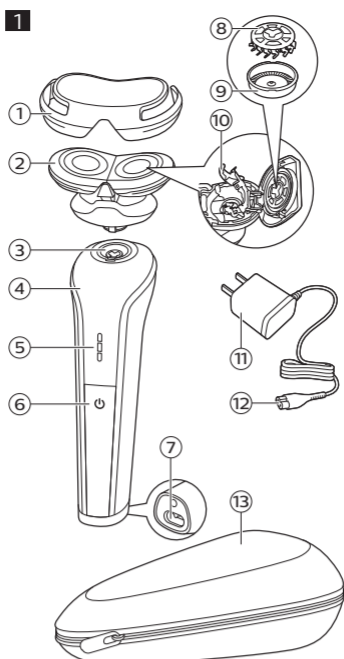
保留备用



>75 % recycled paper

>75 % papier recyclé





English

Congratulations on your purchase and welcome to Philips! To fully benefit from the support that Philips offers, register your product at www.philips.com/welcome.

General description (Fig. 1)

- 1 Protection cap
- 2 Shaving head holder
- 3 Shaving unit connector
- 4 Handle
- 5 Battery charge indicator
- 6 On/off button
- 7 Socket for small plug
- 8 Cutter
- 9 Guard
- 10 Retaining frame
- 11 Supply unit
- 12 Small plug
- 13 Pouch (S588 only)

Not shown: cleaning brush

Important safety information

Read this important information carefully before you use the appliance and its accessories and save it for future reference. The accessories supplied may vary for different products.

Danger

- Keep the supply unit dry (Fig. 2).

Warning

- To charge the battery, only use the detachable supply unit (HQ8505) provided with the appliance.
- The supply unit contains a transformer. Do not cut off the supply unit to replace it with another plug, as this causes a hazardous situation.
- This appliance can be used by children aged from 8 years and above and persons with reduced physical, sensory or mental capabilities or lack of experience and knowledge if they have been given supervision or instruction concerning use of the appliance in a safe way and understand the hazards involved. Children shall not play with the appliance. Cleaning and user maintenance shall not be made by children without supervision.
- Always unplug the shaver before you clean it under the tap.
- Always check the appliance before you use it. Do not use the appliance if it is damaged, as this may cause injury. Always replace a damaged part with one of the original type.
- Do not open the appliance to replace the rechargeable battery.

Caution

- Never use water hotter than 60°C to rinse the shaver.
- Only use this appliance for its intended purpose as shown in the user manual.
- For hygienic reasons, the appliance should only be used by one person.
- Never use compressed air, scouring pads, abrasive cleaning agents or aggressive liquids such as petrol or acetone to clean the appliance.

- Water may drip from the bottom of the shaver when you rinse it. This is normal and not dangerous because all electronics are enclosed in a sealed power unit inside the shaver.
- Do not use the supply unit in or near wall sockets that contain an electric air freshener to prevent irreparable damage to the supply unit.

Electromagnetic fields (EMF)

This Philips appliance complies with all applicable standards and regulations regarding exposure to electromagnetic fields.

General

- This shaver is waterproof (Fig. 3). It is suitable for use in the bath or shower and for cleaning under the tap. For safety reasons, the shaver can therefore only be used without cord.
- The supply unit is suitable for mains voltages ranging from 100 to 240 volts.
- The supply unit transforms 100-240 volts to a safe low voltage of less than 24 volts.

Charging

Note: This appliance can only be used without cord.

Fully charge the appliance before first use and when the display indicates that the battery is almost empty.

Charging takes approx. 1 hour. A fully charged shaver provides up to 45 minutes of shaving time.

Charging with the supply unit

- 1 Make sure the shaver is switched off.
- 2 Put the small plug in the shaver and put the supply unit in the wall socket. The display of the shaver indicates that the shaver is charging.
- 3 After charging, remove the supply unit from the wall socket and pull the small plug out of the appliance.

Charge indications

Battery low

When the battery is almost empty, the bottom light of the battery charge indicator flashes orange (Fig. 5).

Battery charging

When the appliance is charging, the bottom light of the battery charge indicator first flashes and then lights up continuously (Fig. 6). After this the second light flashes and then lights up continuously, and so on until the appliance is fully charged.

Battery full

When the battery is fully charged, all lights of the battery charge indicator light up white continuously (Fig. 7).

Note: This appliance can only be used without cord.

'Unplug before use' reminder

All lights of the battery charge indicator flash 3 times to remind you to unplug the shaver first.

Using the appliance

Removing or attaching the click-on attachments

- 1 Make sure the appliance is switched off.
- 2 Insert the lug of the attachment into the slot in the top of the appliance. Then press down the attachment to attach it to the appliance ('click') (Fig. 8).
- 3 Pull the attachment straight off the appliance (Fig. 9).

Note: Do not twist the attachment while you pull it off the appliance.

Switching the appliance on and off

- 1 To switch the appliance on or off, press the on/off button once (Fig. 10).

Note: This appliance can only be used without cord.

Shaving

Skin adaptation period

Your first shaves may not bring you the result you expect and your skin may even become slightly irritated. This is normal. Your skin and beard need time to adapt to any new shaving system. To allow your skin

to adapt to this new appliance, we advise you to shave regularly (at least 3 times a week) and exclusively with this appliance for a period of 3 weeks.

Dry shaving

- 1 Switch on the appliance.
- 2 Move the shaving heads over your skin in circular movements to catch all hairs growing in different directions (Fig. 11). Make sure each shaving head is fully in contact with the skin. Exert gentle pressure for a close, comfortable shave.

Note: Do not press too hard, as this can cause skin irritation.

- 3 Clean the appliance after use (see 'Cleaning and maintenance').

Wet shaving

For a more comfortable shave, you can also use this appliance on a wet face with shaving foam or shaving gel.

To shave with shaving foam or shaving gel, follow the steps below:

- 1 Apply some water to your skin.
- 2 Apply shaving foam or shaving gel to your skin.
- 3 Rinse the shaving unit under the tap to ensure that the shaving unit glides smoothly over your skin.
- 4 Switch on the appliance.
- 5 Move the shaving heads over your skin in circular movements to catch all hairs growing in different directions (Fig. 11). Make sure each shaving head is fully in contact with the skin. Exert gentle pressure for a close, comfortable shave.

Note: Do not press too hard, this can cause skin irritation.

Note: Rinse the shaving unit regularly to ensure that it continues to glide smoothly over your skin.

- 6 Dry your face.
- 7 Clean the appliance after use (see 'Cleaning and maintenance').

Note: Make sure you rinse all foam or shaving gel off the appliance.

Cleaning and maintenance

Cleaning the shaver under the tap

Clean the shaver after every use for optimal performance (see 'Cleaning and maintenance'). Always unplug and switch off the shaver before you clean it.

Never use compressed air, scouring pads, abrasive cleaning agents or aggressive liquids such as petrol or acetone to clean the appliance.

Be careful with hot water. Always check if the water is not too hot, to prevent burning your hands.

Never dry the shaving unit with a towel or tissue, as this may damage the shaving heads.

- 1 Rinse the shaving unit under a warm tap.
Note: You can also clean the shaving unit with the cleaning brush supplied (Fig. 12).
- 2 Turn the shaver up side down and rinse the openings in the bottom of the shaving head holders. Switch on the shaver briefly during rinsing (Fig. 13).
- 3 Open both shaving head holders (Fig. 14).
- 4 Rinse the hair chambers and shaving head holders under the tap (Fig. 15).
- 5 Carefully shake off excess water and let air dry completely.
- 6 Close the shaving head holders (Fig. 16).

Thorough cleaning

The shaving unit consists of two shaving heads. Clean one shaving head at a time by following the steps below.

- 1 Open the shaving head holder (Fig. 14).
- 2 To unlock the retaining frame, gently squeeze both sides of the retaining frame and flip open the frame (Fig. 17).
- 3 Remove the shaving head. Each shaving head consists of a cutter and a guard (Fig. 18).

Note: Do not clean more than one cutter and guard at a time, since they are all matching sets. If you accidentally mix up the cutters and guards, it may take

several weeks before optimal shaving performance is restored.

- 4 Remove the cutter from the shaving guard (Fig. 19).
- 5 Rinse both parts with water.
- 6 After cleaning, place the cutter back into the guard with the cutter legs pointing downwards (Fig. 20).
- 7 Put the shaving head back into the shaving head holder (Fig. 21).

Note: Make sure that the shaving heads with the projections fit exactly onto the hooks of the shaving head holder when placing them (Fig. 23). The shaving heads supplied with this appliance either have notches or projections. Both shaving systems are the same.

- 8 Push the retaining frame back onto the shaving head holder until you hear a click (Fig. 22).
- 9 Close the shaving head holder (Fig. 16).

Replacement

Replacing the shaving heads

For maximum shaving performance, we advise you to replace the shaving heads every two years. Replace damaged shaving heads immediately. Always replace the shaving heads with original Philips shaving heads (see 'Ordering accessories').

- 1 Switch off the appliance.
- 2 Open the shaving unit by opening both shaving head holders (Fig. 14).
- 3 To unlock the retaining frames, gently squeeze both sides of the retaining frames and flip open the shaving heads (Fig. 17).
- 4 Remove the shaving heads from the shaving head holders (Fig. 18).
Throw away the used shaving heads immediately to avoid mixing them with the new shaving heads.
- 5 Place the new shaving heads in the shaving head holders.

Note: Make sure that the shaving heads with the projections fit exactly onto the hooks of the shaving head holder when placing them (Fig. 23). The shaving heads supplied with this appliance either have notches or projections. Both shaving systems are the same.

- 6 Push the retaining frames back onto the shaving head holder until you hear a click (Fig. 22).
- 7 Close the shaving head holders (Fig. 16).

Storage

Always slide the protection cap onto the shaving unit to protect the shaving unit from dirt or damage during traveling or storage (Fig. 24). We advise you to let the appliance dry before you store it.

Ordering accessories

To buy accessories or spare parts, visit www.philips.com/parts-and-accessories or go to your Philips dealer. You can also contact the Philips Consumer Care Center in your country (see the international warranty leaflet for contact details).

Available parts

The following accessories and spare parts are available:

- SH30 Philips shaving heads
- RQ575 Philips cleansing brush attachment
- RQ563 Philips cleansing brush attachment 3-pack
- HQ110 Cleaning spray
- HQ8505 supply unit

Note: Availability of the accessories may differ by country.

Recycling

- Do not throw away the product with the normal household waste at the end of its life, but hand it in at an official collection point for recycling. By doing this, you help to preserve the environment.
- This product contains a built-in rechargeable battery which shall not be disposed of with normal household waste. Please take your product to an official collection point or a Philips service center to have a professional remove the rechargeable battery.

- Follow your country's rules for the separate collection of electrical and electronic products and rechargeable batteries. Correct disposal helps prevent negative consequences for the environment and human health.

Removing the rechargeable battery

Only remove the rechargeable battery when you discard the shaver. Before you remove the battery, make sure that the shaver is disconnected from the mains and that the battery is completely empty.

Take any necessary safety precautions when you handle tools to open the shaver.

Be careful, the battery strips are sharp.

- 1 Disconnect the appliance from the wall socket and let the appliance run until the motor stops.
- 2 Insert a screwdriver under the edge of the upper front panel and remove it (Fig. 25).
- 3 Undo the screws in the top part of the shaver (Fig. 26).
- 4 Remove the cover (Fig. 27).
- 5 Insert a screwdriver under the edge of the lower front panel to remove it (Fig. 28).
- 6 Remove the inner panel with a screwdriver (Fig. 29).
- 7 Push the inner frame out of the housing with the screwdriver (Fig. 30).
- 8 Cut the wires from the motor with pliers (Fig. 31) and remove the printed circuit board (Fig. 32).
- 9 Break the battery tags and remove the batteries (Fig. 33).

Troubleshooting

This chapter summarizes the most common problems you could encounter with the appliance. If you are unable to solve the problem with the information below, visit www.philips.com/support for a list of frequently asked questions or contact the Consumer Care Center in your country.

Problem	Possible cause	Solution
The shaver does not work as well as it used to.	The shaving heads are damaged or worn.	Replace the shaving heads (see 'Replacement').
	The shaving heads are dirty.	Clean the shaving heads (see 'Cleaning and maintenance').
	Long hairs obstruct the shaving heads.	Clean the shaving heads (see 'Cleaning and maintenance').
	The rechargeable battery is low.	Switch off the shaver and recharge the battery (see 'Charging').
The shaver does not work when I switch it on.	The rechargeable battery is empty.	Switch off the shaver and recharge the battery (see 'Charging').
	The shaver is connected to the wall socket.	This appliance can only be used without cord. Remove the supply unit from the wall socket and pull the small plug out of the appliance.

Problem	Possible cause	Solution
The shaving heads do not stay in place in the shaving unit.	You did not fix the retaining frames properly.	The retaining frames are fixed properly if you hear a click when you push it back onto the shaving heads.
	The shaving heads with projections are not placed properly.	Make sure that the shaving heads with the projections fit exactly onto the hooks of the shaving head holder when placing them (Fig. 23).

简体中文

感谢您的惠顾，欢迎光临飞利浦！为了让您能充分享受飞利浦提供的支持，请在 www.philips.com/welcome 上注册您的产品。

基本说明（图 1）

- 1 保护盖
 - 2 剃须刀头支架
 - 3 剃须刀头部件连接器
 - 4 手柄
 - 5 电池充电指示灯
 - 6 开/关按钮
 - 7 小插头插座
 - 8 刀片
 - 9 网罩
 - 10 固定架
 - 11 电源部件
 - 12 小插头
 - 13 存储袋（仅 S588）
- 未显示：清洁刷

重要安全信息

使用本产品及其附件之前，请仔细阅读本重要信息，并妥善保管以供日后参考。随附的附件可能因产品而异。

危险

- 保持电源部件干燥 (图 2)。
- 警告符号注释：禁止在打开的水龙头下进行清洗 (图 2)。

警告

- 要给电池充电，请仅使用产品随附的可拆卸电源部件 (HQ8505)。
- 电源部件中包含一个变压器。请勿自行更换电源部件的插头，否则将导致严重后果。
- 本产品也可以由 8 岁或以上年龄的儿童以及肢体不健全、感觉或精神上有障碍或缺乏相关经验和知识的人士使用，但前提是有人对他们使用本产品进行监督或指导，以确保他们安全使用，并且让他们明白相关的危害。切勿让儿童玩弄本产品。不要让儿童在无人监督的情况下对本产品进行清洁和保养。
- 将剃须刀手持部分与电源软线分开后，才能在水龙头下清洗手持部分。
- 使用前，请务必检查产品。请勿使用损坏的产品，否则可能对人体造成伤害。请务必用原装型号更换损坏的部件。

- 切勿拆开本产品更换充电电池。

警告

- 切勿使用温度高于 60°C 的热水冲洗剃须刀。
- 只能将本产品用于用户手册中所示的原定用途。
- 出于卫生的目的，本产品只能供一个人使用。
- 切勿使用压缩气体、钢丝绒、研磨性清洁剂或腐蚀性液体（例如汽油或丙酮）来清洁产品。
- 冲洗剃须刀时，水可能从产品底部的插口漏出。这是正常的，而且没有危险，因为所有电子元件都封闭在剃须刀内部的密封电源部件中。
- 请勿在包含电动空气清新器的墙壁插座上或其周围使用电源部件，以免电源部件受到不可修复的损坏。

电磁场 (EMF)

本 Philips 产品符合所有有关暴露于电磁场的适用标准和法规。

概述

- 符号注释：适合于在洗澡或淋浴时使用 (图 3)。允许在盛水的浴缸、淋浴、洗脸盆或其他器皿附近使用本器具。
- 该剃须刀具有防水性能 (图 3)。适合在沐浴或淋浴时使用，也可以放在水龙头下清洗。出于安全原因，该剃须刀在使用时不能连接电线。
- 电源部件适合在 100 - 240 伏的电源电压下工作。
- 该电源部件可将 100-240 伏的电压转换为 24 伏以下的安全低电压。

充电

注意： 本产品只能在不接电源的情况下使用。

第一次使用本产品之前，以及当显示屏指示电池电量快要耗尽时，请为本产品充满电。

充电约需 1 小时。完全充电的剃须刀可提供长达 45 分钟的剃须时间。

使用电源部件充电

- 1 确保剃须刀已关闭。
- 2 将小插头插入剃须刀，然后将电源部件插入电源插座。剃须刀显示屏将显示剃须刀正在充电。
- 3 充电之后，从电源插座上拔下电源部件，并从产品上拔下小插头。

充电指示

电池电量不足

当电池电量几乎耗尽时，电池充电指示灯的底灯会呈橙色闪烁 (图 5)。

电池正在充电

产品充电时，电池充电指示灯的底灯先是闪烁，然后持续 (图 6) 亮起。然后，第二个指示灯闪烁，之后持续亮起，以此类推，直至本产品充满电。

电池电量充满

电池充满电后，所有电池充电指示灯都将呈白色持续 (图 7) 亮起。

使用剃须刀

注意：本产品只能在不接电源的情况下使用。

“使用前拔掉电源插头”提醒

电池充电指示灯的所有灯闪烁 3 次，提醒您先拔掉剃须刀的电源插头。

使用本产品

拆卸或安装卡入式附件

- 1 确保产品电源已关闭。
- 2 将附件的凸缘插入本产品顶部的槽内。然后，按下附件将其安装到本产品上（可听到“咔哒”一声）（图 8）。
- 3 将附件竖直抽离产品（图 9）。

注意：将附件从产品上抽出时，不要旋转。

打开或关闭产品

- 1 要打开或关闭本产品，请按一下（图 10）开/关按钮。

使用剃须刀

注意：本产品只能在不接电源的情况下使用。

剃须

皮肤适应期

前几次剃须可能不会带给您预期效果，并且您的皮肤可能会受到轻度刺激。这是正常的。您的皮肤和胡须需要时间适应任何新的剃须系统。为了让您的皮肤适应这款新产品，我们建议您在 3 周时间内定期（至少每周 3 次）仅使用本产品剃须。

干剃

- 1 启动产品。
- 2 让剃须刀头在您的皮肤上作迂回运动，以刮剃向不同方向（图 11）生长的所有须发。轻轻按压，以获取舒适贴面的剃须感受。

注意：不要用力按压剃须刀，这样做可能会导致皮肤受刺激。

- 3 使用（请参见“清洁和保养”）后要清洁本产品。

湿剃

要获得更舒适的剃须体验，您也可以先用剃须泡沫或剃须啫喱将脸弄湿，然后再用本产品进行剃须。

要用剃须泡沫或剃须啫喱剃须，请按照下面的步骤执行操作：

- 1 用水润湿皮肤。
- 2 在皮肤上涂抹剃须泡沫或剃须啫喱。
- 3 在水龙头下冲洗一下剃须刀头部件，确保剃须刀头部件可以在您的皮肤上顺畅滑动。
- 4 启动产品。
- 5 让剃须刀头在您的皮肤上作迂回运动，以刮剃向不同方向（图 11）生长的所有须发。轻轻按压，以获取舒适贴面的剃须感受。

注意：不要用力按压剃须刀，这样做可能会导致皮肤受刺激。

注意：定期冲洗剃须刀头部件，确保其能够持续在您的皮肤上顺畅滑动。

- 6 擦干面部。

7 使用 (请参见 '清洁和保养')后要清洁本产品。

注意: 确保冲洗干净本产品上的所有泡沫或剃须啫喱。

清洁和保养

在水龙头下冲洗剃须刀

每次使用后请清洁剃须刀, 以获得出色性能 (请参见 '清洁和保养')。清洁前, 务必拔下电源并关闭剃须刀。

切勿使用压缩气体、钢丝绒、研磨性清洁剂或腐蚀性液体 (例如汽油或丙酮) 清洁本产品。

使用热水要当心。切记先检查水温是否太高, 以防烫手。

不要用毛巾或纸巾擦拭剃须刀头部件, 因为这样可能会损坏剃须刀头。

- 1 用温水冲洗剃须刀头部件。
注意: 您也可以使用随附的 (图 12)清洁刷清洁剃须刀头部件。
- 2 将剃须刀倒置, 冲洗剃须刀头支架底部的开口。在冲洗 (图 13)过程中需短暂开启剃须刀。
- 3 打开两个剃须刀头支架 (图 14)。
- 4 在水龙头 (图 15)下冲洗胡茬储藏室和剃须刀头支架。
- 5 小心地甩掉多余的水份然后彻底晾干。
- 6 合上剃须刀头支架 (图 16)。

彻底清洁

剃须刀头部件包含两个剃须刀头。按以下步骤一次清洁一个剃须刀头。

- 1 打开剃须刀头支架 (图 14)。
- 2 要解锁固定架, 请轻轻挤压固定架的两侧, 然后翻开固定架 (图 17)。
- 3 取下剃须刀头。每个剃须刀头包含一组刀片和网罩 (图 18)。

注意: 不要同时清洁多组刀片和网罩, 因为它们都是相互匹配的。如果不小心将剃须刀头的刀片和网罩弄混, 则需要数周时间才能恢复产品的最佳剃须效果。

- 4 从网罩 (图 19)上取下刀片。
- 5 用清水冲洗这两个部件。
- 6 清洁后, 将刀片重新装回至网罩, 刀片底部朝下 (图 20)。
- 7 将剃须刀头装回到剃须刀头支架 (图 21)中。

注意: 安装剃须刀头 (图 23)时, 确保带凸起的剃须刀头正好卡入剃须刀头支架的挂钩。本产品随附的剃须刀头都带有槽口或凸起。这两组剃须系统完全相同。

- 8 将固定架推回到剃须刀头支架上, 直至听到“咔哒” (图 22)一声。
- 9 合上剃须刀头支架 (图 16)。

更换

更换剃须刀头

为获得更好剃须效果, 建议每两年更换一次剃须刀头。

立即更换损坏的剃须刀头。务必使用原装飞利浦剃须刀头 (请参见 '订购配件') 进行更换。

- 1 关闭产品。
- 2 打开两个剃须刀头支架 (图 14), 即打开剃须刀头部件。
- 3 要解锁固定架, 请轻轻挤压固定架的两侧, 然后翻开剃须刀头 (图 17)。
- 4 从剃须刀头支架 (图 18) 上卸下剃须刀头。立即扔掉用过的剃须刀头, 以免与新的剃须刀头混淆。
- 5 将新的剃须刀头装到剃须刀头支架中。

注意: 安装剃须刀头 (图 23) 时, 确保带凸起的剃须刀头正好卡入剃须刀头支架的挂钩。本产品随附的剃须刀头都带有槽口或凸起。这两组剃须系统完全相同。

- 6 将固定架推回到剃须刀头支架上, 直至听到“咔哒” (图 22) 一声。
- 7 合上剃须刀头支架 (图 16)。

存放

务必将保护盖滑到剃须刀头部件上, 以防止剃须刀头部件积聚灰尘, 或在旅行过程中或存放 (图 24) 时受损。我们建议您先将产品晾干, 然后再进行存放。

订购配件

如需购买附件或备件, 请访问 www.philips.com/parts-and-accessories 或联系您的飞利浦经销商。您还可以联系所在国家/地区的飞利浦客户服务中心 (请参阅国际保修卡了解详细联系信息)。

可用部件

可选配以下附件和备件:

- SH30 飞利浦剃须刀头
- RQ575 飞利浦洁面刷附件
- RQ563 飞利浦洁面刷附件 (三件装)
- HQ110 清洁喷雾剂
- HQ8505 电源部件

注意: 附件可能因国家/地区而异。

回收

- 弃置本产品时, 请不要将其与一般生活垃圾放在一起, 应将其交给政府指定的回收中心。这样做将有利于环保。
- 此产品包含内置充电电池; 请勿将充电电池与一般生活垃圾一起弃置。请您将产品送到官方收集中心或飞利浦服务中心, 请专业人士移除充电电池。
- 遵循您的国家/地区有关分类回收电子电气产品和充电电池的规定。正确弃置产品有助于避免对环境和人类健康造成不良后果。

部件名称	产品中有毒物质的名称及含量					
	铅 (Pb)	汞 (Hg)	镉 (Cd)	六价铬 (Cr (VI))	多溴联苯 (PBB)	多溴二苯醚 (PBDE)
PCB's 集成电路板	x	o	o	o	o	o
Electrical contact pins 电接触片	x	o	o	o	o	o
Power plug 电源插头	x	o	o	o	o	o

本表格依据SJ/T 11364的规定编制。
O: 表示该有害物质在该部件所有均质材料中的含量均在GB/T 26572规定的限量要求以下。
X: 表示该有害物质至少在该部件的某一均质材料中的含量超出GB/T 26572规定的限量要求。

- 该表格中所显示的“有害物质”在产品正常使用情况下不会对人身和环境产生任何伤害。
- 该表格中所显示的“有害物质”及其存在的部件向消费者和回收处理从业者提供相关物质的存在信息，有助于产品废弃时的妥善处理。

拆下充电电池

仅在丢弃剃须刀时方可取出充电电池。卸下电池之前，请确保剃须刀与电源断开连接并且电池电量已耗尽。

当您使用工具打开剃须刀时，请采取必要的安全保护措施。

注意，电池带非常锋利。

- 1 断开本产品电源并让其继续运行，直到马达停止。
- 2 将螺丝刀插入前面板的上侧边缘，卸下面板 (图 25)。
- 3 拧下剃须刀 (图 26)顶部的螺丝。
- 4 取下盖子 (图 27)。
- 5 将螺丝刀插入前面板的下侧边缘，卸下面板 (图 28)。
- 6 用螺丝刀 (图 29)卸下内层面板。
- 7 用螺丝刀 (图 30)将内层固定架从外壳中推出。
- 8 用钢丝钳 (图 31)剪断连接马达的电线，并卸下印刷电路板 (图 32)。
- 9 撕开电池标签并取出电池 (图 33)。

故障种类和处理方法

本章归纳了使用本产品时最常见的一些问题。如果您无法根据以下信息解决问题，请访问

www.philips.com/support


查阅常见问题列表，或联系您所在国家/地区的客户服务中心。

问题	可能的原因	解决方法
剃须刀的剃须效果没有以前好。	剃须刀头已损坏或磨损。	更换剃须刀头 (请参见 '更换')。
	剃须刀头很脏。	清洁剃须刀头 (请参见 '清洁和保养')。
	较长的胡须堵塞了剃须刀头。	清洁剃须刀头 (请参见 '清洁和保养')。
	充电电池的电量不足。	关闭剃须刀并为电池 (请参见 '充电')充电。
启动剃须刀后，剃须刀无法工作。	充电电池的电量已耗尽。	关闭剃须刀并为电池 (请参见 '充电')充电。

问题	可能的原因	解决方法
	剃须刀连接了电源插座。	本产品只能在不接电源的情况下使用。从电源插座上拔下电源部件，并从剃须刀上拔下小插头。
剃须刀头无法固定在剃须刀头部件内。	未正确固定固定架。	将固定架推回剃须刀头上时，听到“咔哒”一声后，即表明固定架已固定到位。
	未正确放置带有凸起部位的剃须刀头。	安装剃须刀头(图23)时，确保带凸起的剃须刀头正好卡入剃须刀头支架的挂钩。

PHILIPS

产品：飞利浦电动剃须刀
 型号：S586
 额定电压：220V~
 额定频率：50Hz
 额定输入功率：9W
 生产日期：请见产品本体
 产地：中国广东珠海



珠海经济特区飞利浦家庭电器有限公司
 中国珠海市三灶镇琴石工业区
 全国顾客服务热线: 4008 800 008

本产品根据国标 GB4706.1-2005,
 GB4706.9-2008制造

保留备用

发行日期: 27/04/2017

PHILIPS

产品：飞利浦电动剃须刀
 型号：S588
 额定电压：220V~
 额定频率：50Hz
 额定输入功率：9W
 生产日期：请见产品本体
 产地：中国广东珠海



珠海经济特区飞利浦家庭电器有限公司
 中国珠海市三灶镇琴石工业区
 全国顾客服务热线: 4008 800 008

本产品根据国标 GB4706.1-2005,
 GB4706.9-2008制造