

BHH777



## User manual

**PHILIPS**



## English

Congratulations on your purchase, and welcome to Philips! To fully benefit from the support that Philips offers, register your product at [www.philips.com/welcome](http://www.philips.com/welcome).

### 1 Important

Read this user manual carefully before you use the appliance and keep it for future reference.

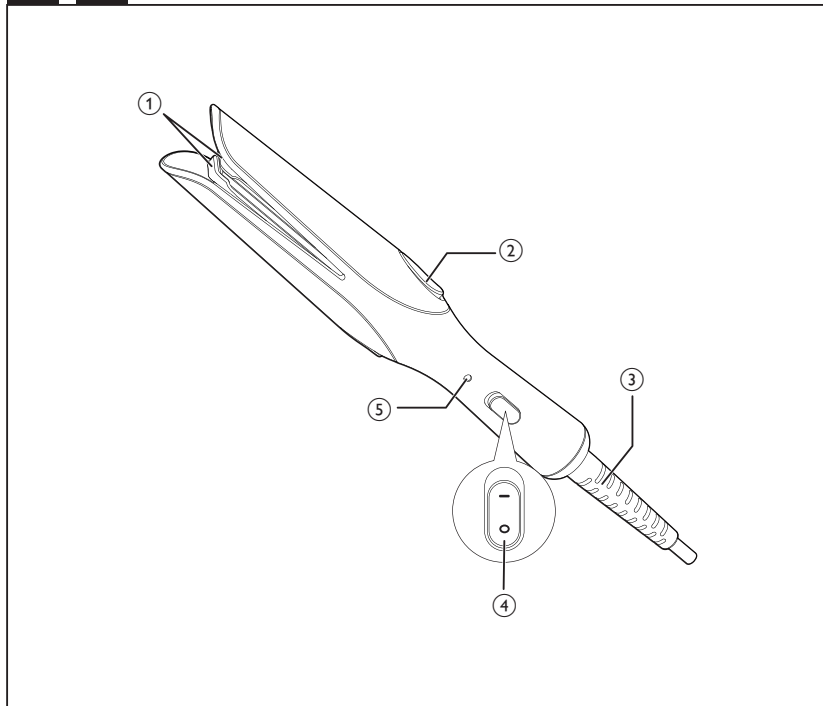
- **WARNING:** Do not use this appliance near water.
- When the appliance is used in a bathroom, unplug it after use since the proximity of water presents a risk, even when the appliance is switched off.
- **WARNING:** Do not use this appliance near bathtubs, showers, basins or other vessels containing water.
- Always unplug the appliance after use.
- If the mains cord is damaged, you must have it replaced by Philips, a service centre authorised by Philips or similarly qualified persons in order to avoid a hazard.
- This appliance can be used by children aged from 8 years and above and persons with reduced physical, sensory or mental capabilities or lack of experience and knowledge if they have been given supervision or instruction concerning use of the appliance in a safe way and understand the hazards involved. Children shall not play with the appliance. Cleaning and user maintenance shall not be made by children without supervision.
- Before you connect the appliance, ensure that the voltage indicated on the appliance corresponds to the local power voltage.



- Do not use the appliance for any other purpose than described in this manual.
- When the appliance is connected to the power, never leave it unattended.
- Never use any accessories or parts from other manufacturers or that Philips does not specifically recommend. If you use such accessories or parts, your guarantee becomes invalid.
- Do not wind the mains cord round the appliance.
- Wait until the appliance has cooled down before you store it.
- Pay full attention when using the appliance since it could be extremely hot. Only hold the handle as other parts are hot and avoid contact with the skin.
- Always place the appliance on a heat-resistant, stable flat surface. The hot plate should never touch the surface or other flammable material.
- Avoid the mains cord from coming into contact with the hot parts of the appliance.
- Keep the appliance away from flammable objects and material when it is switched on.
- Never cover the appliance with anything (e.g. a towel or clothing) when it is hot.
- Only use the appliance on dry hair. Do not operate the appliance with wet hands.
- Keep the appliance clean and free of dust and styling products such as mousse, spray and gel. Never use the appliance in combination with styling products.



1



- The plates have coating. This coating might slowly wear away over time. However, this does not affect the performance of the appliance.
- If the appliance is used on color-treated hair, the plate may be stained. Before using it on artificial hair, always consult their distributor.
- Always return the appliance to a service centre authorized by Philips for examination or repair. Repair by unqualified people could result in an extremely hazardous situation for the user.
- Do not insert metal objects into openings to avoid electric shock.
- Do not pull on the power cord after using. Always unplug the appliance by holding the plug.

- It is normal to find moisture on the device during use.

### Electromagnetic fields (EMF)

This Philips appliance complies with all applicable standards and regulations regarding exposure to electromagnetic fields.

### Environment

Do not throw away the appliance with the normal household waste at the end of its life, but hand it in at an official collection point for recycling. By doing this, you help to preserve the environment.



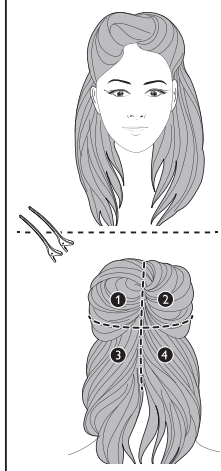
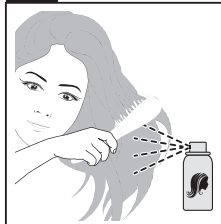
## 2 Overview (Fig.1)

- ① Heating plates
- ② Lock/unlock buttons
- ③ Swivel power cord
- ④ Power on/off switch
- ⑤ Power-on indicator

## 3 Preparation for use (Fig.2)

- 1 Wash your hair and blow dry until it is dry.
- 2 Use a wide-toothed brush to brush your hair. Ensure your hair is tangle-free.
- 3 Apply heat protection spray onto your hair before getting started.
- 4 Separate your hair into sections before styling.

2



Tip

- Try to practice with this appliance several times before switching it on. With practice, the styling results will improve over time.

You can find **step-by-step styling instructions on Quick Start Guide.**

After use:

- 1 Switch off the appliance and unplug it.
- 2 Place it on a heat-resistant surface until it cools down.
- 3 Clean the appliance by damp cloth.
- 4 Keep it in a safe and dry place, free of dust.

## 4 Styling tips



Tip

If you want to know how to make curls, please visit [www.philips.com/curlguide](http://www.philips.com/curlguide)

- Keep your hair dry while curling.
- For longer lasting result, apply hair styling spray onto each section before curling.
- For additional touch up, you may put some finishing spray after the styling is completed.
- If your hair is chemically treated (colored or permed), always use a styling product which offers heat protection before styling.
- The bigger strand you curl, the looser your curl will be. It is recommended to curl 3cm width of hair strand for natural curls.
- You can create different types of curls such as inward or outward curls, loose or tight curls by applying different techniques.
  - For inward curls, rotate the device towards your head
  - For outwards curls, rotate the device away from your head
  - Mix the two types of the curls for a more natural and modern style
  - The curl will be tighter if you turn the device in full circle or keep turning the device while pulling downward
- If you turn the device less than 180 degrees, the curl will be less pronounced. Try to turn the device at least 180 degrees and keep the device parallel to the floor while pulling downward **slowly and continuously** in order to guarantee good curls.
- This curler can also be used to smoothen or straighten hair: Simply put the hair strand in between the plates by pressing the buttons and gently stroke downward.
- This curler can be also used for **creating volume at the hair roots**. Place a piece of hair in between the plates and hold the device at 90 degrees to the scalp for a few seconds. Slowly release the hair strand by pressing the two buttons.
- It is possible to press either of the buttons and have a narrow space between the plates for curling a thinner hair strand.
- When you have finished curling a hair strand, allow the curl to shape better by holding it up before continuing with styling.
- Gently brush out the hair after curling for more natural curls.
- When hair is trapped or being pulled during use, press the lock/unlock buttons during the application to release the hair.

## 5 Guarantee & service

If you need information e.g. about replacement of an attachment or if you have a problem, please visit the Philips website at [www.philips.com](http://www.philips.com) or contact the Philips Customer Care Centre in your country (you will find its phone number in the worldwide guarantee leaflet). If there is no Consumer Care Centre in your country, go to your local Philips dealer.