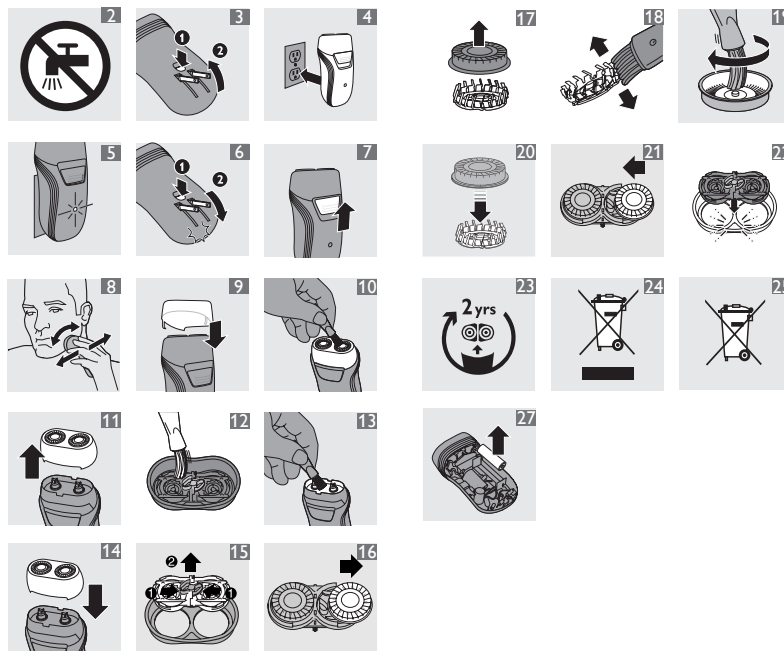
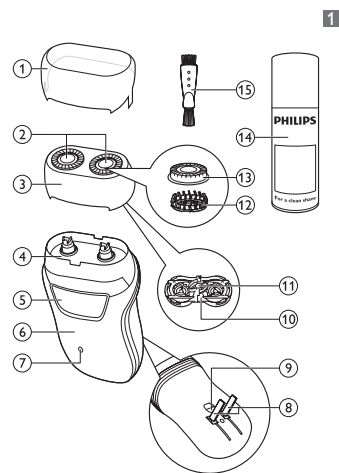
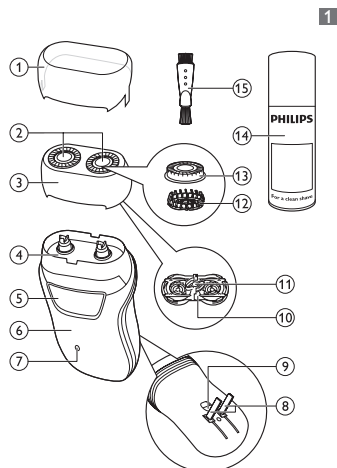




PHILIPS



ENGLISH

Introduction

Congratulations on your purchase and welcome to Philips! To fully benefit from the support that Philips offers, register your product at www.philips.com/welcome.

General description (Fig. 1)

- 1 Protection cap
- 2 Shaving heads
- 3 Shaving unit
- 4 Hair chamber
- 5 On/off slide
- 6 Front panel
- 7 Charging light
- 8 Foldable plug
- 9 Release button of foldable plug
- 10 Retaining frame
- 11 Central spring of retaining frame
- 12 Cutter
- 13 Guard
- 14 Philips Cleaning Spray (HQ110) (Optional)
- 15 Cleaning brush

Important

Read this user manual carefully before you use the appliance and save it for future reference.

Danger

- Keep the appliance dry.
- This symbol means: Forbidden to clean under a running tap (Fig. 2).

Warning

- This appliance is not intended for use by persons (including children) with reduced physical, sensory or mental capabilities, or lack of experience and knowledge, unless they have been given supervision or instruction concerning use of the appliance by a person responsible for their safety.
- Children should be supervised to ensure that they do not play with the appliance.

Caution

- Use and store the appliance at a temperature between 5°C and 35°C.
- Only use the cleaning brush supplied.
- Make sure the cleaning brush remains clean.

Electromagnetic fields (EMF)

This Philips appliance complies with all standards regarding electromagnetic fields. If handled properly and according to the instructions in this user manual, the appliance is safe to use based on scientific evidence available today.

Charging

Charge the appliance when the motor stops or starts running slower. When you charge the shaver for the first time or after a long period of disuse, let it charge continuously for 12 hours. Charging normally takes approx. 8 hours.

Do not leave the appliance connected to the mains for more than 24 hours.

- 1 Switch off the shaver before you start charging it.
- 2 Press the release (1) button and fold out the foldable plug (2) ('click') (Fig. 3).
- 3 Insert the foldable plug unit into the wall socket (Fig. 4).
- 4 The charging light goes on to indicate that the appliance is charging (Fig. 5).
- 4 Remove the shaver from the wall socket when the battery is fully charged.
- 5 Press the release button (1) and fold the foldable plug back into the appliance (2) ('click') (Fig. 6).

Cordless shaving time

A fully charged shaver has a cordless shaving time of approximately 30 minutes.

Using the appliance

The shaver cannot be used directly from the mains.

- 1 Remove the protection cap.
- 2 Push the on/off slide upwards to switch on the shaver (Fig. 7).
- 3 Move the shaving heads over your skin. Make both straight and circular movements (Fig. 8).

Note: Shave on a dry face only. Do not use the shaver in combination with gel, foam or water.

Note: Your skin may need 2 or 3 weeks to get accustomed to the Philips shaving system.

- 4 Push the on/off slide downwards to switch off the shaver.
- 5 Clean the shaver after every shave, see chapter ‘Cleaning and maintenance’.
- 6 Put the protection cap on the shaver after use to prevent damage and to avoid dirt accumulation in the shaving heads (Fig. 9).

Cleaning and maintenance

Never use scouring pads, abrasive cleaning agents or aggressive liquids such as petrol or acetone to clean the appliance.

Clean the shaver after every shave to guarantee better shaving performance. For the best cleaning result, we advise you to use Philips Cleaning Spray (HQ110). Ask your Philips dealer for information.

Note: Philips Shaving Head Cleaning Spray (HQ110) may not be available in all countries. Contact the Customer Care Centre in your country about the availability of this accessory.

After every shave: shaving unit and hair chamber

- 1 Switch off the shaver.
- 2 Clean the top of the appliance with the cleaning brush supplied (Fig. 10).
- 3 Pull the shaving unit straight up off the shaver (Fig. 11).
- 4 Clean the inside of the shaving unit with the cleaning brush (Fig. 12).
- 5 Clean the hair chamber with the cleaning brush (Fig. 13).
- 6 Put the shaving unit back onto the shaver (Fig. 14).

Every two months: shaving heads

Note: Do not use cleaning agents or alcohol to clean the shaving heads. Only use Philips Cleaning Spray (HQ110).

- 1 Switch off the shaver.
- 2 Pull the shaving unit straight up off the shaver (Fig. 11).
- 3 To remove the retaining frame, push the sides of the central spring towards each other (1). Then lift the

retaining frame out of the shaving unit (2) (Fig. 15).

- 4 Slide the shaving heads out of the retaining frame. Remove and clean one shaving head at a time. Each shaving head consists of a cutter and a guard (Fig. 16).

Note: Do not clean more than one cutter and guard at a time, since they are matching sets. If you accidentally mix up the cutters and guards, it may take several weeks before optimal shaving performance is restored.

- 5 Remove the guard from the cutter (Fig. 17).
- 6 Clean the cutter with the short-bristled side of the cleaning brush. Brush carefully in the direction of the arrows (Fig. 18).
- 7 Clean the guard with the long-bristled side of the cleaning brush (Fig. 19).
- 8 Put the cutter back into the guard after cleaning (Fig. 20).
- 9 Slide the shaving heads back into the retaining frame (Fig. 21).
- 10 Put the retaining frame back into the shaving unit (‘click’) (Fig. 22).
- 11 Put the shaving unit back onto the shaver (Fig. 14).

Storage

Keep the appliance dry. Use and store the appliance at a temperature between 5°C and 35°C.

- 1 Switch off the shaver.
- 2 Put the protection cap on the shaver after use to prevent damage and to avoid dirt accumulation in the shaving heads (Fig. 9).

Replacement

Replace the shaving heads every two years for optimal shaving results. Replace damaged or worn shaving heads with Philips shaving heads only (HQ4+ for China or HQ56 for the rest of the world). For instructions on how to remove the shaving heads, see chapter ‘Cleaning and maintenance’, section ‘Every two months: shaving heads’.

Accessories

To retain top performance of your shaver, make sure you clean it regularly and replace its shaving heads at the recommended time.

Shaving heads

- We advise you to replace your shaving heads every two years. Always replace them with Philips shaving heads only (HQ4+ for China or HQ56 for the rest of the world) (Fig. 23).

Cleaning

- Use Philips Cleaning Spray (HQ110) to clean the shaving heads thoroughly.

Environment

- Do not throw away the appliance with the normal household waste at the end of its life, but hand it in at an official collection point for recycling. By doing this, you help to preserve the environment (Fig. 24).
- The built-in rechargeable battery contains substances that may pollute the environment. Always remove the battery before you discard and hand in the appliance at an official collection point. Dispose of the battery at an official collection point for batteries. If you have trouble removing the battery, you can also take the appliance to a Philips service centre. The staff of this centre will remove the battery for you and will dispose of it in an environmentally safe way (Fig. 25).

Removing the rechargeable battery

Only remove the rechargeable battery when it is completely empty.

- 1 Make sure the appliance is disconnected from the mains.
- 2 Let the shaver run until it stops, undo the screw on the back of the shaver (1) and lift the back panel off the shaver (2) (Fig. 26).
- 3 Remove the rechargeable battery (Fig. 27).

Do not connect the shaver to the mains again after you have removed the battery.

Guarantee and service

If you need service or information or if you have a problem, please visit the Philips website at www.philips.com or contact the Philips Consumer Care Centre in your country. You find its phone number in the worldwide guarantee leaflet. If there is no Consumer Care Centre in your country, go to your local Philips dealer.

Guarantee restrictions

The shaving heads (cutters and guards) are not covered by the terms of the international guarantee because they are subject to wear.

Troubleshooting

This chapter summarises the most common problems you could encounter with the appliance. If you are unable to solve the problem with the information below, contact the Consumer Care Centre in your country.

Problem	Possible cause	Solution
The shaver does not shave as well as it used to.	The shaving heads are dirty. You have not cleaned the shaver well enough or you have not cleaned it for a long time.	Clean the shaver thoroughly before you continue shaving. See chapter ‘Cleaning and maintenance’.
	Long hairs obstruct the shaving heads.	Clean the cutters and guards with the cleaning brush supplied. See chapter ‘Cleaning and maintenance’, section ‘Every two months: shaving heads’.

Problem	Possible cause	Solution
	The shaving heads are damaged or worn.	Replace the shaving heads. See chapter ‘Replacement’.
The shaver does not work when I push the on/off slide upwards.	The battery is empty.	Recharge the battery. See chapter ‘Charging’.
My skin is irritated after shaving.	Your skin needs time to get used to the Philips shaving system.	Skin irritation during the first 2-3 weeks of use is possible. After this period, the skin irritation usually disappears.
The rotation speed of the shaving heads is slower than usual.	Too much dirt has collected in the shaving heads.	Clean the shaving heads. See chapter ‘Cleaning and maintenance’.
	The battery is empty	Recharge the battery. See chapter ‘Charging’.
The appliance makes a strange noise.	Too much dirt has collected in the shaving heads.	Clean the shaving heads. After cleaning, lubricate the central point on the inside of the guards with Philips Cleaning Spray (HQ110). See chapter ‘Cleaning and maintenance’.

Problem	Possible cause	Solution
	The shaving heads are damaged or worn.	Replace the shaving heads. See chapter 'Replacement'.

繁體中文

簡介

感謝您購買本產品並歡迎加入飛利浦！請於 www.philips.com/welcome 註冊您的產品，以善用飛利浦提供的支援。

一般說明 (圖 1)

- 1 保護蓋
- 2 電鬚刀刀頭
- 3 除毛刀頭組
- 4 毛髮收集室
- 5 On/Off 開關
- 6 正面護板
- 7 充電指示燈
- 8 折疊式插頭
- 9 折疊式插頭釋放鈕
- 10 固定架
- 11 固定架的中央彈簧
- 12 刀具
- 13 刀網
- 14 飛利浦噴霧清潔劑 (HQ110) (選購)
- 15 清潔刷

重要事項

使用本產品前，請先仔細閱讀本使用手冊，並保留說明以供日後參考。

危險

- 請保持本產品乾燥。
- 此符號表示：禁止在水龍頭下清洗。(圖 2)

警告

- 基於安全考慮，在缺乏監督及適當指示之下，本產品不適用於孩童及任何身體、知覺、或心理功能障礙者，或缺乏使用經驗及知識者。
- 請勿讓孩童使用本產品或將本產品當成玩具。

警告

- 請於 5° C 到 35° C 間使用並存放本產品。
- 只能使用隨附的清潔刷。
- 清潔刷請務必保持乾淨。

電磁波 (EMF)

本飛利浦產品符合所有電磁波相關標準。只要使用方式正確並依照本使用手冊之說明進行操作，根據現有的科學研究資料，使用本產品並無安全顧慮。

充電

請在馬達停止轉動時或者運轉速度開始變慢時，為電鬚刀進行充電。在您第一次對電鬚刀充電或者長時間未使用後，請讓其連續充電 12 小時。正常的充電時間約需 8 個小時。

不要讓電鬚刀連續連接電源插座超過 24 小時。

- 1 開始充電前，請先關閉電鬚刀電源。
- 2 按下釋放鈕 (1)，然後將將折疊式插頭往外折 (2) (會聽見「喀噠」一聲)。(圖 3)
- 3 將折疊式插頭裝置插入電源插座。(圖 4)
 - ▶ 充電指示燈亮起，表示產品正在進行充電。(圖 5)
- 4 當電池完全充滿電後，請將電鬚刀拔離電源插座。
- 5 按下釋放鈕 (1) 並將折疊式插頭折回產品中 (2) (會聽見「喀噠」一聲)。(圖 6)

無線刮鬚時間

電池充滿的電鬚刀可不插電刮鬚約 30 分鐘。

使用此產品

電鬚刀無法直接插電使用。

- 1 卸下保護蓋。
- 2 將 On/Off 開關往上推，即可開啟電鬚刀電源。(圖 7)
- 3 將電鬚刀頭在皮膚上移動，請同時用直線及畫圓的方式來移動。(圖 8)

注意：僅可乾刮。使用電鬚刀時，請勿搭配凝露、泡沫或水。

注意：您的皮膚可能需要 2 到 3 週的時間才能完全適應飛利浦電鬚刀系統。

- 4 將 On/Off 開關往下推，即可關閉電鬚刀電源。
- 5 每次刮鬚後，請清潔本電鬚刀，請參閱「清潔與保養」單元。

- 6 使用後請為電鬚刀蓋上保護蓋以防損壞，並避免污垢累積在刀頭中。(圖 9)

清潔與維護

絕對不可使用鋼絲絨、磨蝕性的清潔劑或侵蝕性的液體 (例如汽油或丙酮) 清潔本產品。

在每次刮鬚之後清潔電鬚刀，以保障更好的刮鬚效果。為達最好的清潔效果，建議您使用飛利浦噴霧清潔劑 (HQ110)。請向您的飛利浦經銷商洽詢相關資訊。

注意：飛利浦電鬚刀刀頭噴霧清潔劑 (HQ110) 並非所有國家都有供應。關於是否有這項配件供應，請與您所在國家的顧客服務中心聯繫。

每次刮鬚後：刮鬚刀組與鬚渣室

- 1 請先關閉電鬚刀電源。
- 2 使用隨附的清潔刷清潔產品上方。(圖 10)
- 3 從電鬚刀中垂直抽出電鬚刀組。(圖 11)
- 4 使用隨附的清潔刷清潔刮鬚刀頭組內部。(圖 12)
- 5 使用清潔刷清潔毛髮收集室。(圖 13)
- 6 將電鬚刀組裝回電鬚刀上。(圖 14)

每兩個月：電鬚刀頭

注意：請勿使用清潔劑或酒精清潔電鬚刀頭，務必使用飛利浦噴霧清潔劑 (HQ110)。

- 1 請先關閉電鬚刀電源。
- 2 從電鬚刀中垂直抽出電鬚刀組。(圖 11)
- 3 要拆下固定架，請將中央彈簧的兩側朝中間推壓 (1)。然後提起固定架從電鬚刀組取出 (2)。(圖 15)
- 4 將電鬚刀刀頭推出固定架外。一次取下並清洗一個刀頭。每個電鬚刀頭都是由刀片和刀網組成。(圖 16)

注意：因為刀片及刀網是成對的一組，請勿一次清潔超過一組。如果您不小心將刀片及刀網混在一起，可能要花幾週的時間才能恢復最理想的刮鬚效果。

- 5 取下刀具的刀網。(圖 17)

- 6 請使用清潔刷的短毛側來清潔刀具。請依箭頭方向小心刷動。(圖 18)
- 7 請使用清潔刷的長毛側來清潔刀網。(圖 19)
- 8 清潔後，將刀具放回刀網中。(圖 20)
- 9 將電鬚刀刀頭推回固定架中。(圖 21)
- 10 將固定架裝回電鬚刀組 (會聽見「喀噠」一聲)。(圖 22)
- 11 將電鬚刀組裝回電鬚刀上。(圖 14)

收納

請保持本產品乾燥。
請於 5° C 到 35° C 間使用並存放本產品。

- 1 請先關閉電鬚刀電源。
- 2 使用後請為電鬚刀蓋上保護蓋以防損壞，並避免污垢累積在刀頭中。(圖 9)

更換

每隔兩年更換一次電鬚刀頭，以確保維持最佳的刮鬚效果。
損壞或用舊的刀頭限以飛利浦電鬚刀刀頭替換 (中國為 HQ4+，其他國家為 HQ56)。
有關如何取下電鬚刀頭的說明，請參閱「清潔與維護」單元之「每兩個月：電鬚刀頭」章節。

配件

若要維持電鬚刀的最佳效能，請務必定期清潔電鬚刀，並於建議的時間更換電鬚刀刀頭。

- 電鬚刀刀頭**
 - 建議您每兩年即更換電鬚刀刀頭。限以飛利浦電鬚刀刀頭替換 (中國為 HQ4+，其他國家為 HQ56)。(圖 23)
- 清潔**
 - 使用飛利浦噴霧清潔劑 (HQ110) 徹底清潔電鬚刀頭。

環境保護

- 本產品使用壽命結束時請勿與一般家庭廢棄物一併丟棄。請將該產品放置於政府指定的回收站，此舉能為環保盡一份心力。(圖 24)
- 本產品內建的充電式電池含有可能會污染環境的物質。丟棄本產品或是將本產品放到政府指定回收站前，請務必先取出電池，並且將電池送到政府指定的電池回收站。若您無法取出電池，可將本產品拿到飛利浦服務中心，服務中心的人員會為您卸下電池，並以對環境無害的方式處理電池。(圖 25)

取出充電電池

必須將充電式電池電力完全耗盡後才能拆卸電池。

- 1 請確實拔除產品電源插頭。
- 2 讓電鬚刀持續運轉直到完全停止，轉開電鬚刀背面的螺絲 (1)，然後打開電鬚刀的背面模板 (2)。(圖 26)
- 3 取出充電電池。(圖 27)

卸除電池後，請勿再次將電鬚刀連接至電源。

保固與服務

如需相關服務或資訊，或是有任何問題，請瀏覽飛利浦網站，網址為：www.philips.com，或聯絡您所在國家/地區的飛利浦客戶服務中心，電話號碼可參閱全球保證書。若您的所在國家/地區沒有客戶服務中心，請洽詢當地的飛利浦經銷商。

保固限制

電鬚刀刀頭 (刀具和刀網) 由於其耗損性，因此不在全球保固範圍內。

故障排除

本說明概述您使用本產品時最常遇到的問題。如果您無法利用以下資訊解決您遇到的問題，請聯絡您所在國家/地區的客戶服務中心。

問題	可能原因	解決方法
電鬚刀不像平常一樣運作。	電鬚刀刀頭不潔。電鬚刀清潔不夠徹底或是太久沒有清潔。	在您繼續刮鬚之前，請徹底清潔電鬚刀。請參閱「清潔與維護」單元。
	長鬚鬚卡住電鬚刀刀頭。	請使用隨附的毛刷清潔刀具及刀網。請參閱「清潔與維護」單元之「每兩個月：電鬚刀刀頭」小節。
	電鬚刀刀頭毀壞或磨損。	更換電鬚刀刀頭。請參閱「更換」單元。
將 on/off 開關往上推，但電鬚刀不動。	電池電量完全耗盡。	為電池充電。請參閱「充電」單元。
刮鬚之後，皮膚感到刺痛。	您的皮膚需要一些時間才能適應飛利浦電鬚刀系統。	開始使用的第 2 到 3 週，皮膚可能有過敏現象。過了這段時間，皮膚過敏的症狀通常會消失。
刀頭的旋轉速度比平常緩慢。	過多污垢累積在刀頭中。	請清潔電鬚刀刀頭。請參閱「清潔與維護」單元。
	電池電量完全耗盡	為電池充電。請參閱「充電」單元。

問題	可能原因	解決方法
產品發出奇怪的噪音。	過多污垢累積在刀頭中。	請清潔電鬚刀刀頭。清潔後，請使用飛利浦噴霧清潔劑 (HQ110) 潤滑刀網內側的中心點。請參閱「清潔與維護」單元。
	電鬚刀刀頭毀壞或磨損。	更換電鬚刀刀頭。請參閱「更換」單元。