

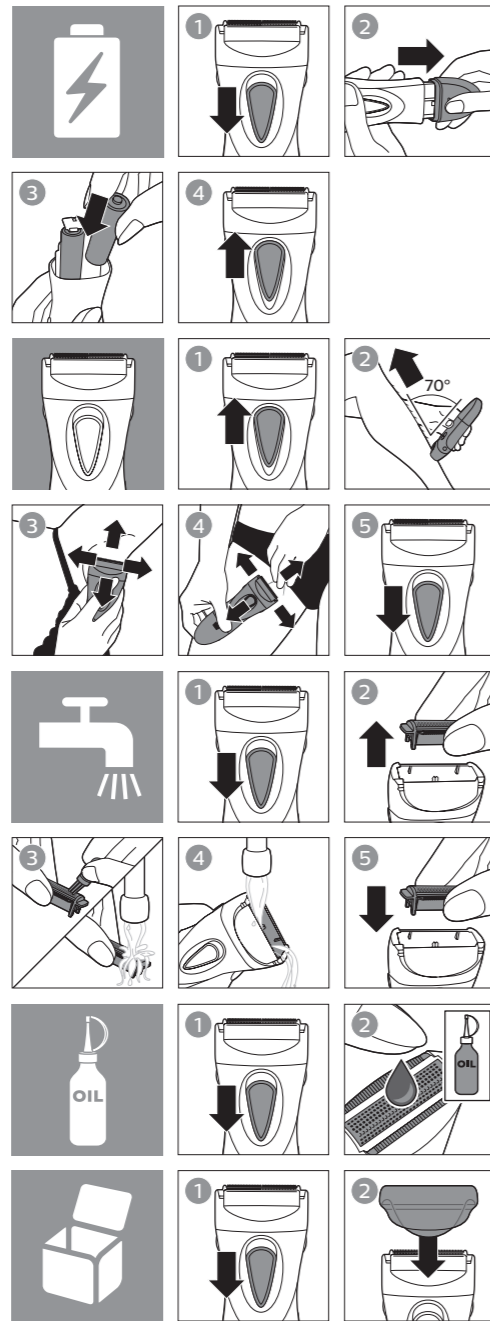
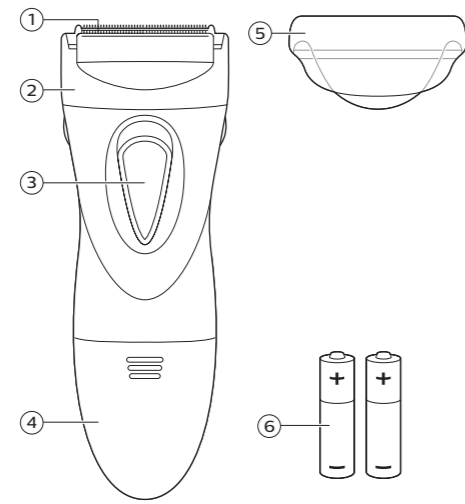


>75% recycled paper
>75% papier recyclé
www.philips.com
3000.028.7366.1

In US manufactured for: Philips Personal Health, A division of Philips North America LLC, P.O. Box 10313, Stamford, CT 06904
In Canada manufactured for: Philips Electronics Ltd, 281 Hillmount Road, Markham, ON L6C 2S3

PHILIPS and Philips shield are registered trademarks of Koninklijke Philips N.V. / PHILIPS et le blason Philips sont des marques déposées de Koninklijke Philips N.V. / PHILIPS y Philips Shield son marcas registradas de Koninklijke Philips N.V.
©2018 Philips North America LLC. All rights reserved/ Tout droits réservés/Todos los derechos reservados.
3000.028.7366.1 (9/27/2018)

Fig. 1



Note: Allow to air-dry thoroughly.

Nota: Deje secar al aire completamente.

Remarque : Laisser sécher à l'air complètement.

English

IMPORTANT SAFETY INSTRUCTIONS

When using an electric product, basic precautions should always be followed, including the following:

Read all instructions before using this product.

WARNING

To reduce the risk of burns, fire, electric shock, or injury to persons:

- Close supervision is required when this product is used by, on, or near children, or persons with limited physical, sensory, or mental capabilities or invalids.
- Use this product only for its intended household use as described in this manual. Do not use attachments not recommended by Philips North America LLC.
- Never drop or insert any object into any opening.
- Never operate this product if it is not working properly, after it has been dropped or damaged, or after the product has been dropped into water. For assistance call 1-800-243-7884.
- Do not use this product outdoors or operate where aerosol (spray) products are being used or where oxygen is being administered.
- Never put the product in direct sunlight or store at a temperature above 140 °F (60 °C).
- Always check the shaving foil and trimmers before using the product. Do not use the product if the shaving foil or cutters are damaged, as injury may occur.
- Only use the accessories supplied with the product.
- If product will not be used on a regular basis, remove the battery to prevent possible damage due to chemical leakage. If battery does leak, remove it carefully. Do not allow bare skin to touch leaking fluid.

SAVE THESE INSTRUCTIONS

IMPORTANT INFORMATION

CAUTION

- If the product and accessories are subjected to a major change in temperature, pressure or humidity, let them acclimatize for 30 minutes before using.
- For hygienic reasons, it is recommended that the product be used by only one person.
- This product is only intended for shaving body hair below the neck.
- This product is waterproof.
- It is suitable for use in the bath or shower and for cleaning under the tap.
- Never use compressed air, scouring pads, abrasive cleaning agents or aggressive liquids such as gasoline or acetone to clean the product.
- Turn the product off before removing or attaching attachments and before cleaning.
- Make sure your hands and the product are dry when inserting batteries.
- Only operate the product on non-rechargeable disposable 1.5 V AA alkaline batteries.
- Make sure that the + and - markings on the ends of the batteries match those inside the battery compartment.
- Do not clean, rinse or immerse the product in water if the battery compartment is not closed properly.
- When rinsing the product or attachments, always check to make sure the water is not too hot (maximum 100 °F) to prevent your hands from getting burnt.

GENERAL

- Do not use the product on sensitive or irritated skin or wounds without consulting your doctor.

- For dry use, make sure that your skin is clean and dry before shaving.
- For wet use, prepare your skin with lathered soap or shaving foam before shaving. Do not use deodorant or alcohol-based lotions immediately before or after shaving. You may however, want to use talcum powder.
- It is not necessary to press hard to get a close result. Pressing too hard may cause skin irritation, and the product will not function properly.
- If product gets warm during use, turn product off and clean it.
- Clean the product after each use.
- This appliance has no other user-serviceable parts. For assistance call 1-800-243-7884 call (US only) or 1-886-800-9311 (Canada only).
- Make sure the shaving foil and trimmers are always in full contact with the skin to obtain an even result.
- Stretch the skin with your free hand while moving the appliance slowly with light pressure against the direction of hair growth.
- To shave legs and bikini line, always move the product gently over the skin against the direction of hair growth. To shave underarms, place one arm behind your head and move the product up and down and from left to right.
- Apply vaseline to the rubber sealing ring from time to time to keep the product watertight.

Introduction

Congratulations on your purchase and welcome to Philips! To fully benefit from the support that Philips offers, register your product at www.philips.com/welcome.

Features (Fig. 1)

- 1 Shaving unit
 - 2 Shaving head
 - 3 On/off slide
 - 4 Battery compartment cover
 - 5 Protection cap
 - 6 Two 1.5 V AA alkaline batteries
- Not shown: Cleaning brush

Troubleshooting

This chapter summarizes the most common problems you could encounter with the product. If you are unable to solve the problem with the information below, visit www.philips.com/support, or call 1-800-234-7884 (US only) or 1-886-800-9311 (Canada only) for assistance.

Problem	Possible cause	Solution
The appliance is not performing as well as it should.	The shaving unit is dirty.	Remove the shaving unit and clean it under the tap or with the cleaning brush. Remove any hairs that might be stuck under the trimmer.
	You put the appliance on the skin at a wrong angle.	Make sure that you put the appliance on the skin at an angle of 70°.
	The batteries are nearly empty.	Replace the batteries.
The appliance operates too slowly (and produces an odd sound).	The batteries are nearly empty.	Replace the batteries.
	The shaving unit is dirty.	Clean the shaving unit.
	The shaving unit needs to be lubricated.	Lubricate the shaving unit with a few drops of sewing machine oil.

Problem	Possible cause	Solution
More skin irritation than usual.	The shaving foil is damaged or worn.	Replace the shaving unit.
The appliance does not work.	The batteries are empty.	Replace the batteries.
	You have not placed the batteries in the battery compartment correctly.	Put the batteries in the compartment in accordance with the + and - indications in the compartment.
	You have not attached the battery compartment cover properly.	Push the battery compartment cover onto the appliance (click).

The appliance fell into the water while the battery compartment was open. Let the appliance dry. Do not reattach the battery compartment cover until the inside of the appliance is completely dry.

Disposal

Your product is designed and manufactured with high quality materials and components, which can be recycled and reused. For recycling information, please contact your local waste management facilities or visit www.recycle.philips.com.

This product contains batteries:

- Dispose of batteries properly. Do not incinerate. Batteries may explode if overheated.
- Do not wrap in metal or aluminum foil. Tape the waste battery terminals before discarding.
- It is suggested that you contact your local town or city to determine proper battery redemption site(s) in your area.

Assistance

For assistance, visit our website: www.philips.com/support or call toll free 1-800-243-7884 (in US only) or 1-866-800-9311 (in Canada only).

45-DAY MONEY-BACK GUARANTEE

If you are not fully satisfied with your product send the product back and we'll refund you the full purchase price.

The product must be shipped prepaid by insured mail, insurance prepaid, have the original sales receipt, indicating purchase price and date of purchase, and the money-back guarantee return authorization form enclosed.

We cannot be responsible for lost mail.

The product must be postmarked no later than 45 days after the date of purchase. Philips reserves the right to verify the purchase price of the product and limit refunds not to exceed suggested retail price.

To obtain money-back guarantee return authorization form, call 1-800-234-7884 (in US only) or 1-886-800-9311 (in Canada only) for assistance.

Delivery of refund check will occur 6-8 weeks after receipt of returned product.

Full Two-Year Warranty

Philips North America LLC warrants this new product (except cutters) against defects in materials or workmanship for a period of two years from the date of purchase, and agrees to repair or replace any defective product without charge.

IMPORTANT: This warranty does not cover damage resulting from accident, misuse or abuse, lack of reasonable care, the affixing of any attachment not provided with the product or loss of parts or subjecting the product to any but the specified battery.*
NO RESPONSIBILITY IS ASSUMED FOR ANY SPECIAL, INCIDENTAL OR CONSEQUENTIAL DAMAGES.

In order to obtain warranty service, simply go to www.philips.com/support for assistance. It is suggested that for your protection you return shipments of product by insured mail, insurance prepaid. Damage occurring during shipment is not covered by this warranty.

NOTE: No other warranty, written or oral, is authorized by Philips North America LLC. This warranty gives you specific legal rights, and you may also have other rights which vary from state to state. Some states do not allow the exclusion or limitation of incidental or consequential damages, so the above exclusion and limitations may not apply to you.

* Read enclosed instructions carefully.

Manufactured for: Philips Consumer Lifestyle, a division of Philips North America LLC, P.O. Box 10313, Stamford, CT 06904.

PHILIPS and Philips Shield are registered trademarks of Koninklijke Philips N.V.

Español

INSTRUCCIONES IMPORTANTES DE SEGURIDAD

Cuando utilice un producto eléctrico, siempre debe seguir las precauciones básicas, incluidas las siguientes:

Lea todas las instrucciones antes de usar este producto.

ADVERTENCIA

Para reducir el riesgo de quemaduras, incendio, descarga eléctrica o lesiones:

- El uso de este dispositivo debe estar bajo estricta supervisión cuando esté operado por niños, por personas con capacidades mentales, sensoriales o físicas limitas o por personas con discapacidades, o cuando se emplee en o cerca de estos.
- Use este producto solo para el uso doméstico previsto como se describe en este manual. No use accesorios que no estén recomendados por la corporación Philips North America LLC.
- No deje caer ni introduzca ningún objeto en ninguna abertura.
- Nunca utilice este producto si no está funcionando correctamente, si lo ha dejado caer, está dañado o si ha caído en el agua. Para solicitar asistencia 1-800-243-7884.
- No use este producto a la intemperie ni lo use donde se estén usando productos de aerosol (atomizador) o donde se esté administrando oxígeno.
- Nunca exponga el producto a la luz directa del sol ni lo guarde en lugares con temperaturas superiores a los 140 °F (60 °C).
- Revise siempre la lámina de afeitado y las cuchillas antes de usar el producto. No use el producto si la lámina de afeitado y las cuchillas están dañadas, ya que puede producirse una lesión.
- Use solo los accesorios provistos con el producto.
- Si no va usar el producto con regularidad, retire la batería para prevenir un posible daño debido a una fuga de químicos. Si la batería tiene fugas, retírela con cuidado. No permita que el fluido de la fuga toque su piel.

CONSERVE ESTAS INSTRUCCIONES

INFORMACIÓN IMPORTANTE

PRECAUCIÓN

- Si el producto y los accesorios están sujetos a un cambio de temperatura, presión o humedad de consideración, permita que se aclimaten durante 30 minutos antes de utilizarlos.
- Por motivos de higiene, se recomienda que solo una persona utilice el producto.
- Este producto está diseñado exclusivamente para afeitar el vello del cuerpo abajo de la línea del cuello.
- Este producto es a prueba de agua (Fig. 1). Es apropiado para su uso en el baño o la ducha y puede lavarse en la llave.
- Nunca use aire comprimido, fibras, agentes de limpieza abrasivos ni líquidos agresivos como gasolina o acetona para limpiar el producto.
- Apague el producto antes de retirar o colocar los accesorios y antes de limpiarlo.
- Asegúrese de que sus manos y el producto estén secos antes de insertar las baterías.
- Solo use el producto con baterías alcalinas desechables no recargables AA de 1.5 V.
- Asegúrese de que los signos de + y - en los extremos de las baterías coincidan con los que están dentro el compartimiento de la batería.
- No limpie, enjuague ni sumerja el producto en agua si el compartimiento de la batería no está bien cerrado.

