

IMPORTANT SAFETY INSTRUCTIONS

When using an electric appliance, basic precautions should always be followed, including the following.

Read these instructions for use carefully before using the appliance and save them for future reference.

DANGER

To reduce the risk of electric shock:

1. Do not reach for a charging base that has fallen into water. Unplug immediately.
2. Do not plug in the charging base while bathing or taking a shower.
3. Do not place or store the charging base where it can fall or be pulled into a bathtub or sink.
4. Do not place or drop the charging base in water or any other liquid.
5. Always unplug the charging base immediately after use, except when you are charging the appliance.
6. Unplug the charging base before cleaning.
7. When **discarding** the appliance, remove it from the charging base and make sure the appliance is in the Off ("O") position. Then remove the rechargeable battery.

WARNING

To reduce the risk of burns, fire, electric shock, or injury to persons:

1. Close supervision is necessary when this product is used by, on, or near children or invalids.
2. This appliance is intended for household use only, as described in this manual.
3. Only use attachments that are recommended by Philips Electronics North America Corporation.
4. Never use the appliance/charging base if the plug is damaged, if the appliance/charging base is not working properly, if the appliance/charging base has been dropped and appears to be damaged, or if the charging base has been dropped into water. Always return the appliance/charging base to an authorized Norelco Service Location for examination and repair.
5. Never drop or insert any objects into any opening of the appliance.
6. Do not charge or operate the appliance outdoors, in places where aerosol (spray) products are being used or where oxygen is being administered.
7. **Always check the foil before using the appliance. Do not use the appliance if the foil or the trimmer is damaged, as injury may occur.**
8. Always place razor in base first, then plug base into outlet. To disconnect, turn razor off, then remove plug from base from outlet.
9. Never store the appliance in direct sunlight or at temperatures above 140°F.
10. The appliance is water-resistant and can be used in the bathtub or shower. Do not submerge the appliance in water for an extended period of time.
11. Make sure razor and your hands are dry before placing razor in charging base.
12. To prevent possible damage to the cord, do not wrap cord around charging base.

SAVE THESE INSTRUCTIONS IMPORTANT

This appliance contains a RECHARGEABLE NICKEL-CADMIUM BATTERY. See Battery Removal Instruction Section.

IMPORTANT: The power plug contains a transformer. Do not cut off the power plug to replace it with another plug as this will cause a hazardous condition.

60-Day Money-Back Guarantee

If you are not fully satisfied with your Norelco Ladyshave Razor, Norelco will refund you the full purchase price. **The razor must be shipped prepaid by insured mail, insurance prepaid, have the sales slip indicating purchase price and date of purchase enclosed.** The razor must be postmarked **no later than 60 days** after the date of purchase. Norelco reserves the right to verify the purchase price of the razor and limit refunds not to exceed suggested retail price.

Send dated sales receipt, your complete name and address as indicated below, and the razor, prepaid to:

**Norelco Consumer Products Company
A Division of Philips Electronics North America Corporation
450 North Medinah Road, Dock 16
Roselle, IL 60172-2329**

Please allow 4-6 weeks for delivery of check. (Please Print)

Name _____
Address _____
City _____
State _____ Zip _____
Daytime Telephone No. (____) _____
E-mail Address _____

REASON FOR RETURNING:

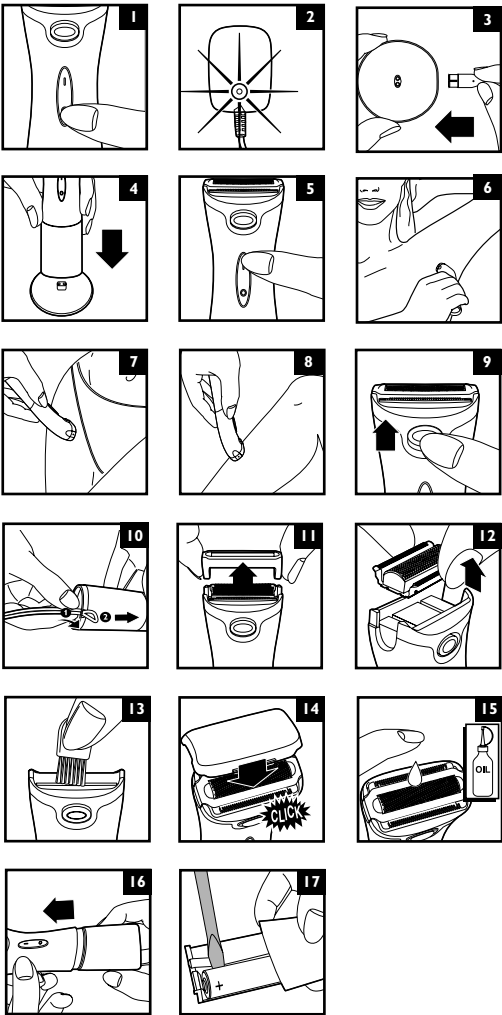
Put It To The Test & Shaving Tips

Like many new products, your Norelco Ladyshave Razor may take a little getting used to. If you are using a rechargeable Razor for the first time, or if you've been using a different brand, your skin may need time to adapt to the Lift & Shave Shaving System. Give yourself a little time to practice and determine the best stroking motions for the best shave.

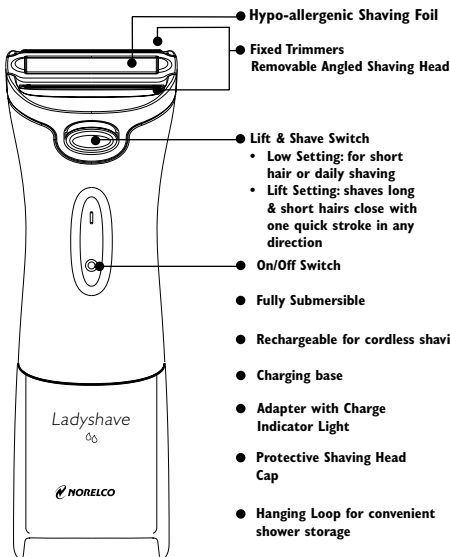
Use it exclusively for 3 weeks, or a bit longer for sensitive skin. If you alternate shaving or other hair removal methods during this adjustment period, it may make it more difficult to adapt to the Norelco Lift & Shave shaving system.

Since your Ladyshave Razor features the Lift & Shave Shaving System, you'll be able to customize hair removal by using the low or lift setting. However, at first you may not get as close a shave as you expect, or your skin may become slightly irritated. This is normal as your skin adjusts. After this adjustment period, you'll find that you can remove hair without irritating your skin, for a close, smooth shave.

The Norelco Ladyshave Razor, with Lift & Shave Shaving System.....the choice for close, smooth shaving results. If you're not convinced after 21 days, Norelco will refund you the full purchase price, guaranteed.



Features



NORELCO
Ladyshave
LIFT & SHAVE
SHAVING SYSTEM



Wet/Dry
rechargeable razor
HP6319

PHILIPS

4203 000 53181

Before Using Your New Norelco Razor

- This appliance is intended for household use only, as described in this manual.
- Before using, check foil for wear or damage. If the foil shows signs of wear or damage, do not use the Razor as injury may occur. Do not use it until the foil has been replaced.
- For wet shaving, you may wish to prepare your skin with soap or shaving cream before shaving.
- For dry shaving, be certain that your skin is clean. If you have sensitive skin, you may wish to apply talcum powder before and/or after shaving.
- When shaving your legs, underarms, or bikini line, it is not necessary to press hard to get a close shave. Pressing too hard may cause skin irritation, and the Razor will not function properly. In addition, do not use deodorant or alcohol-based lotions immediately before or after shaving. You may, however, want to use talcum powder.
- Clean the Razor regularly; for instructions see chapter 'Cleaning'.
- Only the Razor, not the charging base, can be submerged in water; however, do not submerge the Razor for extended periods of time.
- You may wish to store the Razor with the charging base connected to the outlet, so that the Razor is kept fully charged. However, remember to allow the battery to totally deplete charge every 4 weeks (see chapter TO CHARGE/RECHARGE).

To Change/Recharge

- Charging and recharging your Razor requires a full 16 hours.
- Charge the Razor only with the charging base provided.
- Be certain hands and Razor are dry before charging.
- Recharge at temperatures between 40°F and 90°F. Charging at lower or higher temperatures adversely affects the lifetime of the battery.

1 Be certain the Razor is in the Off (o) position (fig. 1).

2 Plug the adaptor into any 120V AC outlet. The pilot light on the adaptor goes on (fig. 2).

3 Insert the small plug into the charging base (fig. 3). Use only the charging base provided.

• An adaptor plug and converter may be necessary for the use of the charging base plug in some foreign countries. Use an attachment plug adaptor of the proper configuration for the power outlet.

4 Put the Razor onto the charging base (fig. 4).

5 Charging requires 16 hours. This Razor model HP6319, is for cordless shaving only.

6 Razor may be continuously charged with charging base connected to electrical outlet for a maximum of 4 weeks. At the end of 4 weeks, you must allow the battery to totally deplete charge before recharging.

- To deplete charge, shave in usual manner; however, do not recharge Razor between shaves. Continue to use Razor until battery is totally depleted.

7 You may then keep Razor continuously charging for another 4-week period before you must once again allow Razor to totally deplete charge.

IMPORTANT:

Before connecting Razor to charging base, be certain Razor is in Off ("O") position. While Razor is charging, the recharge light on the adaptor will light with Razor in either the On or Off position, however, your Razor will only recharge if Razor is turned off.

Lift & Shave Shaving System

Your new Ladyshave Razor features the Lift & Shave Shaving System with 2 settings to choose from. The low setting is for short hair or daily shaving. The lift setting shaves long and short hairs close with one quick stroke in any direction.

1 Turn the Razor on ("I") (fig. 5).

2 Hold the Razor so that Shaving Head is in full contact with your skin. Shave with smooth, steady strokes, against the direction of hair growth.

- Pressing too hard may cause skin irritation.
- Practice is best for optimum results.
- Make sure both trimmers and shaving foil are in complete contact with skin.
- For shaving underarms, lift your arm until skin under arm stretches slightly (fig. 6).
- For shaving bikini line, stretch skin taut with your fingers (fig. 7).
- For shaving legs, shave with smooth, steady strokes (fig. 8).
- When shaving hard-to-reach areas or longer hairs, push the Lift & Shave slide switch upwards to the "lift" position (fig. 9).

3 Turn the Razor Off ("O").

Tips

- When shaving underarms, do not use deodorant or alcohol-based lotions immediately before or after shaving. You may, however, want to use talcum powder.
- Shave by moving the razor in the direction of hair growth. Remove any remaining hairs by moving the razor in different directions.
- You may store your razor in the shower or bath by using the convenient shower hanging loop. Attach the shower loop to the Razor as shown (fig. 10).

Cleaning

- Regular cleaning guarantees better shaving results.
- It is recommended that you replace your shaving foil once a year.
- Always switch Razor Off and remove charging base plug from outlet before cleaning.
- Never remove or replace Shaving Head while motor is on.
- Do not apply pressure or touch Shaving Head with hard objects as this may dent or damage foil or trimmers. If damage occurs, replace foil.
- Check foil regularly.
- Never use a razor with a damaged or broken foil.

After Each Use

- After each use, Razor should be quickly cleaned by rinsing under running water or dipping and shaking gently in water.

IMPORTANT: DO NOT keep Razor submerged in water for a long period of time.

Once A Month - Cleaning Shaving Head

IMPORTANT: DO NOT apply pressure to Shaving Foil.

1 Switch Razor Off ("O").

2 Remove the shaving head bracket (fig. 11).

3 Remove the shaving unit (foil and cutter) by grasping the two fixed trimmers on either side of the foil and gently pulling the shaving unit from the Razor. Once the shaving unit is removed, hold the shaving unit only by the trimmers (fig. 12).

- The Shaving Foil is very delicate and should not be handled.
- If foil becomes worn or damaged, replace it. Do not apply pressure to shaving foil.

4 Hairs can be removed from the shaving unit and housing by rinsing clean, using a soft brush or by lightly blowing out hairs. Be sure you also brush hairs away from under the trimmers.

5 Brush the hair chamber (fig. 13).

NOTE: Avoid using brush on Shaving Foil, as this may cause damage.

- Body of Razor and Shaving Head, including Shaving Foil, may also be rinsed under running water to remove hairs.
- Do not use or clean razor with water hotter than shower temperature.

6 Be sure all parts are dry before reassembling.

- Do not use cloth or towel to dry Shaving Foil or cutter block; allow to air dry.

7 Replace the cutter block and Shaving Head by gently pressing back into position on Razor body.

- Hold Shaving Head by plastic housing only.
- Always replace Protective Cap on shaving head to prevent damage to foil (fig. 14).

NOTE: Use cold or lukewarm water. Never use cleaners such as alcohol, nail polish remover, corrosive detergents or scouring pads.

- For best shaving performance, it is suggested to lightly oil Shaving Head twice a year by spreading a drop of mineral oil over the foil and trimmers (fig. 15).

If this does not improve the performance of your razor, it may be time to replace the foil.

- Never immerse charging base in water or other liquid. You may clean by wiping with a damp cloth.
- This razor has no other user-serviceable parts. Any other service should be performed by an Authorized Norelco Service Location.

STORAGE

- Be sure Razor is turned off. Removed cord from outlet and charging base before storing in a safe, dry location where it will not be crushed, banged, or subject to damage. Do not wrap cord around Razor or charging base when storing.
- Razor may be conveniently stored by hanging loop in shower or bath (fig. 10).
- Store cord in a safe location where it will not be cut or damaged.
- Do not place or store charging base where it can fall or be pulled into a tub or sink, water or other liquid while plugged in.

Assistance

- For assistance or the Authorized Norelco Service Location nearest you, call toll free: 1-800-243-3050 or visit our Norelco website: www.norelco.com

- Authorized Norelco Service Location information is available 24 hours a day, 7 days a week.

Battery Removal

THIS NORELCO RAZOR CONTAINS A NICKEL-CADMIUM RECHARGEABLE BATTERY WHICH MUST BE DISPOSED OF PROPERLY.

- Battery should only be removed when razor is to be discarded.
- Remove razor from charging base and unplug charging base from outlet before dismantling.
- All servicing should be performed by an Authorized Norelco Service Location

How To Remove Rechargeable Battery

- 1 Remove razor from charging base and unplug base from outlet before dismantling. Let the razor motor run until the battery is completely empty/depleted.
- 2 Pull firmly to open the Razor (fig. 16).
- 3 Using a narrow flat blade screwdriver, lift the battery out of the Razor and then separate the battery from the razor (fig. 17).
- 4 Remove battery. Do not attempt to replace battery. Insulate battery ends by covering with tape and/or place battery in small plastic bag.
- 5 Discard your razor. Do not attempt to place the razor in the charging base and recharge the razor after the battery has been removed.
- 6 Contact your local town or city officials for battery disposal information or call 1-800-8-BATTERY for battery drop-off locations.

Accessories

For maximum performance, replace your Norelco Ladyshave foil and cutter block once a year

- Model HP6119 Philips replacement foil
- Model HP6111 Philips cutter block

Razor accessories may be purchased at a store near you, an authorized Norelco Service Location, on our website www.norelco.com or by using the handy order form enclosed.

Full Two-Year Warranty

Philips Electronics North America Corporation warrants each new Norelco Product, Model HP6319 (except foil and trimmers), against defects in materials or workmanship for a period of two years from the date of purchase, and agrees to repair or replace any defective product without charge.

IMPORTANT: This warranty does not cover damage resulting from accident, misuse or abuse, lack of reasonable care, the affixing of any attachment not provided with the product or loss of parts or subjecting the product to any but the specified voltage.* Use of unauthorized replacement parts will void this warranty.

PHILIPS ELECTRONICS NORTH AMERICA CORPORATION WILL NOT PAY FOR WARRANTY SERVICE PERFORMED BY A NON-AUTHORIZED REPAIR SERVICE AND WILL NOT REIMBURSE THE CONSUMER FOR DAMAGE RESULTING FROM WARRANTY SERVICE PERFORMED BY A NON-AUTHORIZED REPAIR SERVICE. NO RESPONSIBILITY IS ASSUMED FOR ANY SPECIAL, INCIDENTAL OR CONSEQUENTIAL DAMAGES.

In order to obtain warranty service, simply take or ship the product postage prepaid to the nearest Authorized Norelco Service Location. It is suggested that for your protection you return shipments of product by insured mail, insurance prepaid. Damage occurring during shipment is not covered by this warranty.

NOTE: No other warranty, written or oral, is authorized by Philips Electronics North America Corporation.

This warranty gives you specific legal rights, and you may also have other rights which vary from state to state. Some states do not allow the exclusion or limitation of incidental or consequential damages, so the above exclusion and limitations may not apply to you.

*Read enclosed instructions carefully.

Manufactured for:
Norelco Consumer Products Company
A Division of Philips Electronics North America Corporation
1010 Washington Blvd., Stamford, CT 06912-0015


**RAZOR MADE IN AUSTRIA.
CHARGING BASE MADE IN CHINA.**

Norelco is a Registered Trademark of Philips Electronics North America Corporation.

Ladyshave & Design, Ladyshave and Lift & Shave are Trademarks of Philips Electronics North America Corporation.

PHILIPS and Philips Shield are Registered Trademarks of Koninklijke Philips Electronics N.V.

© 2004 Philips Electronics North America Corporation. All Rights Reserved.

 This symbol on the product's nameplate means it is listed by Underwriters' Laboratories, Inc.