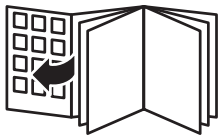
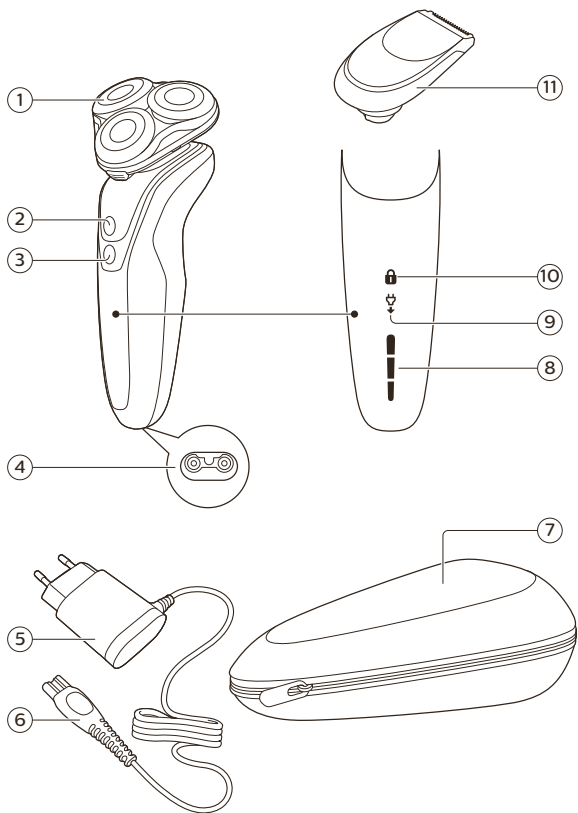


PHILIPS

S5620







English 6
简体中文 **26**

Introduction

Congratulations on your purchase and welcome to Philips! To fully benefit from the support that Philips offers, register your product at www.philips.com/welcome.

Please read this user manual, as it contains information about the features of this shaver as well as some tips to make shaving easier and more enjoyable.

General description

- 1 Click-on shaving unit
- 2 On/off button
- 3 Turbo button
- 4 Socket for small plug
- 5 Supply unit
- 6 Small plug
- 7 Pouch
- 8 Battery charge indicator with 3 lights
- 9 Unplug for use symbol
- 10 Travel lock symbol
- 11 Click-on precision trimmer attachment

Important safety information

Read this important information carefully before you use the appliance and its accessories and save it for future reference. The accessories supplied may vary for different products.

Danger



- Keep the supply unit dry.

Warning

- To charge the battery, only use the detachable supply unit (HQ8505) provided with the appliance.
- The supply unit contains a transformer. Do not cut off the supply unit to replace it with another plug, as this causes a hazardous situation.
- This appliance can be used by children aged from 8 years and above and persons with reduced physical, sensory or mental capabilities or lack of experience and knowledge if they have been given supervision or instruction concerning use of the appliance in a safe way and understand the hazards involved. Children shall not play with the appliance. Cleaning and user maintenance shall not be made by children without supervision.
- Always unplug the appliance before you clean it under the tap.
- Always check the appliance before you use it. Do not use the appliance if it is damaged, as this may cause injury. Always replace a damaged part with one of the original type.

- This appliance contains batteries that are non-replaceable.
- Do not open the appliance to replace the rechargeable battery.

Caution

- Never use water hotter than 60 °C to rinse the appliance.
- Only use this appliance for its intended purpose as shown in the user manual.
- For hygienic reasons, the appliance should only be used by one person.
- Never use compressed air, scouring pads, abrasive cleaning agents or aggressive liquids such as petrol or acetone to clean the appliance.
- Water may drip from the socket at the bottom of the appliance when you rinse it. This is normal and not dangerous because all electronics are enclosed in a sealed power unit inside the appliance.
- Do not use the supply unit in or near wall sockets that contain an electric air freshener to prevent irreparable damage to the supply unit.

Electromagnetic fields (EMF)

This Philips appliance complies with all applicable standards and regulations regarding exposure to electromagnetic fields.

General



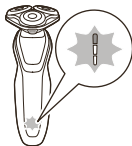
- This appliance is waterproof. It is suitable for use in the bath or shower and for cleaning under the tap. For safety reasons, the appliance can therefore only be used without cord.
- The supply unit is suitable for mains voltages ranging from 100 to 240 volts.
- The supply unit transforms 100-240 volts to a safe low voltage of less than 24 volts.

The display

Battery charge indicator

Quick charge: When the battery is empty and you connect the appliance to the wall socket, the lights of the battery charge indicator light up one after the other repeatedly. When the appliance contains enough energy for one shave, the bottom light of the battery charge indicator starts flashing slowly.

While the appliance continues to charge, first the bottom light of the battery charge indicator flashes and then lights up continuously. Then the second light flashes and then lights up continuously, and so on until the appliance is fully charged.



Battery fully charged



When the battery is fully charged, all lights of the battery charge indicator light up white continuously.

Note: When the battery is full, the display switches off automatically after 30 minutes.

Battery low



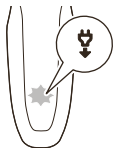
When the battery is almost empty, the bottom light of the battery charge indicator flashes orange. At this point there is enough energy left for one shave.

Remaining battery charge



The remaining battery charge is shown by the lights of the battery charge indicator that light up continuously.

'Unplug for use' reminder



The 'unplug for use' symbol flashes to remind you that you have to disconnect the appliance from the wall socket before you can switch it on.

Travel lock



You can lock the shaver when you are going to travel. The travel lock prevents the shaver from being switched on by accident.

While you activate the travel lock, the travel lock symbol lights up continuously. When the travel lock is activated, the travel lock symbol flashes.

While you deactivate the travel lock, the travel lock symbol lights up briefly and the shaver produces a short sound. The appliance switches on and is now ready for use again.

Charging

Charging with the supply unit

Charge the appliance before you use it for the first time and when the battery charge indicator indicates that the battery is almost empty (see 'Battery charge indicator').

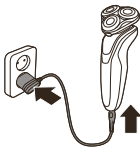
Charging takes approx. 1 hour. A fully charged appliance has a cordless operating time of up to 50 minutes.

Note: You cannot use the appliance while it is charging.

- 1 Make sure the appliance is switched off.
- 2 Put the small plug in the appliance and put the supply unit in the wall socket.

The battery charge indicator indicates that the appliance is charging.

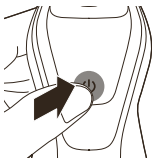
- 3 After charging, remove the supply unit from the wall socket and pull the small plug out of the appliance.



Using the appliance

Note: This appliance can only be used without cord.

Switching the appliance on and off



To switch the appliance on or off, press the on/off button once.

The display lights up for a few seconds to show the remaining battery status.

Shaving

Skin adaptation period

Your first shaves may not bring you the result you expect and your skin may even become slightly irritated. This is normal. Your skin and beard need time to adapt to any new shaving system. To allow your skin to adapt to this new appliance, we advise you to shave regularly (at least 3 times a week) and exclusively with this appliance for a period of 3 weeks.

Note: This appliance can only be used without cord.

Dry shaving

- 1 Switch on the appliance.
- 2 Move the shaving heads over your skin in circular movements to catch all hairs growing in different directions. Make sure each shaving head is fully in contact with the skin. Exert gentle pressure for a close, comfortable shave.

Note: Do not press too hard, as this can cause skin irritation.



- 3 Switch off and clean the appliance after each use.

Wet shaving

For a more comfortable shave, you can also use this appliance on a wet face with shaving foam or shaving gel.

To shave with shaving foam or shaving gel, follow the steps below:

- 1 Apply some water to your skin.



- 2 Apply shaving foam or shaving gel to your skin.



- 3 Rinse the shaving unit under the tap to ensure that the shaving unit glides smoothly over your skin.



- 4 Switch on the appliance.

- 5 Move the shaving heads over your skin in circular movements to catch all hairs growing in different directions. Make sure each shaving head is fully in contact with the skin. Exert gentle pressure for a close, comfortable shave.

Note: Do not press too hard, as this can cause skin irritation.

Note: Rinse the shaving unit regularly to ensure that it continues to glide smoothly over your skin.

- 6 Dry your face.



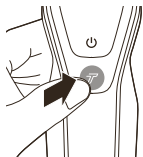
- Switch off and clean the appliance after each use.

Note: Make sure you rinse all foam or shaving gel off the appliance.

Turbo setting

This appliance is equipped with a Turbo setting. This allows you to shave hard-to-reach areas more quickly.

- Switch on the appliance.
- To activate the Turbo setting, press the Turbo button once when the appliance is switched on.



- Move the shaving heads over your skin in circular movements to catch all hairs growing in different directions. Make sure each shaving head is fully in contact with the skin. Exert gentle pressure for a close, comfortable shave.

Note: Do not press too hard, as this can cause skin irritation.

- To deactivate the Turbo setting, press the Turbo button once.

Using the click-on attachments

Removing or attaching the click-on attachments

- Make sure the appliance is switched off.
- Pull the attachment straight off the appliance.

Note: Do not twist the attachment while you pull it off the appliance.



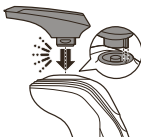


- 3 Insert the lug of the attachment into the slot in the top of the appliance. Then press down the attachment to attach it to the appliance ('click').

Using the precision trimmer attachment

You can use the precision trimmer attachment to touch up your beard, sideburns and moustache.

- 1 Attach the attachment to the appliance ('click').
- 2 Switch on the appliance.



- 3 Hold the precision trimmer attachment perpendicular to the skin and move the appliance downwards while you exert gentle pressure.
- 4 Clean the attachment after use.



Cleaning

Cleaning the shaver under the tap

Clean the shaver after every use for optimal performance.

Be careful with hot water. Always check if the water is not too hot, to prevent burning your hands.

Never dry the shaving unit with a towel or tissue, as this may damage the shaving heads.

While rinsing the shaving unit, water may drip out of the base of shaver. This is a normal occurrence.

- 1 Switch on the appliance.



2 Rinse the shaving unit under a warm tap.



3 Switch off the appliance. Press the release button to open the shaving unit.



4 Rinse the hair chamber under the tap.



5 Rinse the shaving head holder under a warm tap.

6 Carefully shake off excess water and let the shaving head holder air-dry completely.



7 Close the shaving head holder ('click').

Thorough cleaning method

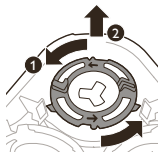
1 Switch off the appliance.



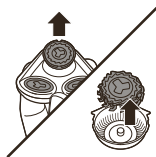
- 2 Press the release button to open the shaving unit.



- 3 Pull the shaving head holder off the bottom part of the shaving unit.

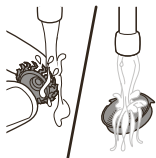


- 4 Turn the retaining rings anticlockwise and remove them.



- 5 Remove the shaving heads from the shaving head holder. Each shaving head consists of a cutter and guard.

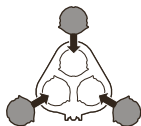
Note: Do not clean more than one cutter and guard at a time since they are all matching sets. If you accidentally put a cutter in the wrong shaving guard, it may take several weeks before optimal shaving performance is restored.



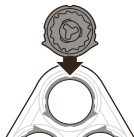
- 6 Clean the cutter and guard under the tap.



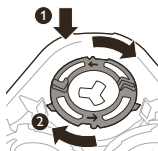
7 Put the cutter back into the guard.



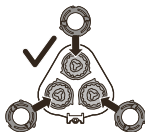
8 Place the shaving heads in the shaving head holder.



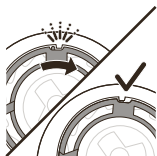
Note: Make sure that the projections of the shaving heads fit exactly into the recesses of the shaving head holder.



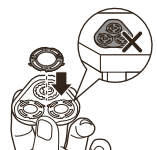
9 Place the retaining rings back onto the shaving head holder and turn them clockwise ('click').



- Each retaining ring has two recesses and two projections that fit exactly in the projections and recesses of the shaving head holder.



- Turn the ring clockwise until you hear a click and the ring is fixed.



Note: Hold the shaving head holder in your hand when you reinsert the shaving heads and reattach the retaining rings. Do not place the shaving head holder on a surface, as this may cause damage to the shaving heads.



- 10 Reinsert the hinge of the shaving head holder into the slot of the shaving unit. Close the shaving head holder.

Cleaning the trimmer attachment

Clean the trimmer attachment after each use.

- 1 Switch on the appliance with the precision trimmer attachment attached.
- 2 Rinse the attachment under a warm tap.
- 3 Switch off the appliance.



- 4 Carefully shake off excess water and let the attachment air-dry completely.



Note: Never dry the trimmer attachment with a towel or tissue, as this may damage the trimming teeth.

For optimal performance, lubricate the teeth of the attachment with a drop of sewing machine oil every six months.

Storage

We advise you to let the appliance and its attachments dry before you put the protection caps on the attachments or store the shaver in the pouch.

Note: The accessories supplied may vary for different products. The box shows the accessories that have been supplied with your product.

Replacing the shaving heads



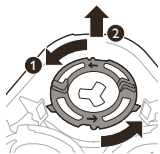
For maximum shaving performance, we advise you to replace the shaving heads every two years. Replace damaged shaving heads immediately. Always replace the shaving heads with original Philips shaving heads.

- 1 Switch off the appliance.
- 2 Press the release button to open the shaving unit.



- 3 Pull the shaving head holder off the bottom part of the shaving unit.



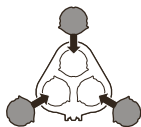


- 4 Turn the retaining rings anticlockwise and remove them. Place them aside in a safe place.

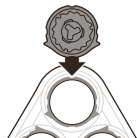


- 5 Remove the shaving heads from the shaving head holder.

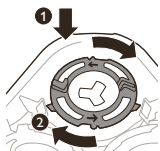
Discard the used shaving heads immediately to avoid mixing them with the new shaving heads.



- 6 Place the new shaving heads in the shaving head holder.

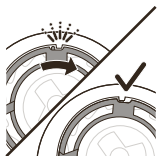


Note: Make sure that the projections of the shaving heads fit exactly into the recesses of the shaving head holder.

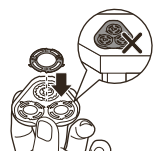


- 7 Place the retaining rings back onto the shaving heads.

Each retaining ring has two recesses and two projections that fit exactly in the projections and recesses of the shaving head holder.



- 8 Turn the ring clockwise until you hear a click to indicate that the ring is fixed.



Note: Hold the shaving head holder in your hand when you reinsert the shaving heads and reattach the retaining rings. Do not place the shaving head holder on a surface, as this may cause damage to the shaving heads.



- 9 Reinsert the hinge of the shaving head holder into the slot of the shaving unit. Close the shaving head holder ('click').

Ordering accessories

To buy accessories or spare parts, visit www.philips.com/parts-and-accessories or go to your Philips dealer. You can also contact the Philips Consumer Care Center in your country (see the international warranty leaflet for contact details).

The following accessories and spare parts are available:

- SH50 Philips shaving heads
- HQ110 Philips shaving head cleaning spray
- RQ111 Philips beard styler attachment
- HQ8505 supply unit

Note: The availability of the accessories may differ by country.

Recycling



- This symbol means that this product shall not be disposed of with normal household waste (2012/19/EU).



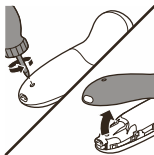
- This symbol means that this product contains a built-in rechargeable battery which shall not be disposed of with normal household waste (2006/66/EC). Please take your product to an official collection point or a Philips service center to have a professional remove the rechargeable battery.
- Follow your country's rules for the separate collection of electrical and electronic products and rechargeable batteries. Correct disposal helps prevent negative consequences for the environment and human health.

Removing the rechargeable battery

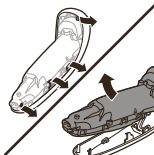
Only remove the rechargeable battery when you discard the product. Before you remove the battery, make sure that the product is disconnected from the wall socket and that the battery is completely empty.

Take any necessary safety precautions when you handle tools to open the product and when you dispose of the rechargeable battery.

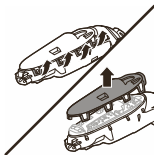
Be careful, the battery strips are sharp.



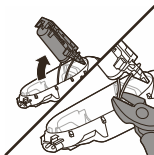
- 1 Remove the screw in the back panel with a screwdriver. Then remove the back panel.



- 2 Bend the hooks aside and remove the power unit.



- 3 Break the snap hooks and remove the front panel of the power unit.



- 4 Take out the battery holder and cut the battery tags with a pair of cutting pliers.

Warranty and support

If you need information or support, please visit www.philips.com/support or read the international warranty leaflet.

Troubleshooting

This chapter summarizes the most common problems you could encounter with the appliance. If you are unable to solve the problem with the information below, visit www.philips.com/support

for a list of frequently asked questions or contact the Consumer Care Center in your country.

Problem	Possible cause	Solution
The appliance does not shave as well as it used to.	The shaving heads are damaged or worn.	Replace the shaving heads (see 'Replacing the shaving heads').
	Hairs or dirt obstruct the shaving heads.	Clean the shaving heads by following steps of the thorough cleaning method (see 'Thorough cleaning method').
The appliance does not work when I press the on/off button.	The appliance is still connected to the wall socket. For safety reasons, the appliance can only be used without cord.	Unplug the appliance and press the on/off button to switch on the appliance.
	The rechargeable battery is empty.	Charge the battery (see 'Charging').
	The travel lock is activated.	Press the on/off button for 3 seconds to deactivate the travel lock.
	The shaving unit is soiled or damaged to such an extent that the motor cannot run.	Clean the shaving heads (see 'Cleaning') or replace them (see 'Replacing the shaving heads').
	The shaving heads are damaged or worn.	Replace the shaving heads. (see 'Replacing the shaving heads')
Water is leaking from the bottom of the appliance.	During cleaning, water may collect between the inner body and the outer shell of the appliance.	This is normal and not dangerous because all electronics are enclosed in a sealed power unit inside the appliance.

介绍

感谢您的惠顾，很高兴您选择飞利浦！为了让您能充分享受飞利浦提供的支持，请在 www.philips.com/welcome 上注册您的产品。

请阅读本用户手册，手册包含有关此剃须刀各种功能的信息以及一些使用技巧，让您的剃须体验更轻松更舒适。

基本说明

- 1 卡入式剃须刀头部部件
- 2 开/关按钮
- 3 Turbo 按钮
- 4 小插头插座
- 5 电源部件
- 6 小插头
- 7 存储袋
- 8 电池充电指示灯（3 级指示）
- 9 “不要接电源使用”指示灯
- 10 旅行锁指示灯
- 11 卡入式精确修剪器附件

重要安全信息

使用本产品及其附件之前，请仔细阅读本重要信息，并妥善保管以供日后参考。随附的附件可能因产品而异。

危险



- 保持电源部件干燥。
- 警告符号注释：禁止在打开的水龙头下进行清洗。

警告

- 要给电池充电，请仅使用产品随附的可拆卸电源部件 (HQ8505)。
- 电源部件中包含一个变压器。请勿自行更换电源部件的插头，否则将导致严重后果。
- 本产品也可以由 8 岁或以上年龄的儿童以及肢体不健全、感觉或精神上有障碍或缺乏相关经验和知识的人士使用，但前提是有人对他们使用本产品进行监督或指导，以确保他们安全使用，并且让他们明白相关的危害。切勿让儿童玩弄本产品。不要让儿童在无人监督的情况下对本产品进行清洁和保养。
- 手持部分与电源软线分开后，才能在水中清洗手持部分。
- 使用前，请务必检查产品。请勿使用损坏的产品，否则可能对人体造成伤害。请务必用原装型号更换损坏的部件。
- 本产品包含的电池不可更换。
- 切勿拆开本产品更换充电电池。

警告

- 切勿使用温度高于 60° C 的热水冲洗本产品。
- 只能将本产品用于用户手册中所示的原定用途。
- 出于卫生的目的，本产品只能供一个人使用。
- 切勿使用压缩气体、钢丝绒、研磨性清洁剂或腐蚀性液体（例如汽油或丙酮）来清洁产品。
- 冲洗本产品时，水可能会从其底部的插口滴漏。这是正常现象，而且没有危险，因为所有电子元件都封闭在本产品内部的密封电源部件中。
- 请勿在包含电动空气清新器的墙壁插座上或其周围使用电源部件，以免电源部件受到不可修复的损坏。

电磁场 (EMF)

本 Philips 产品符合所有有关暴露于电磁场的适用标准和法规。

概述

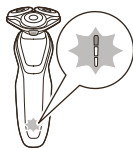
- 符号注释：适合于在洗澡或淋浴时使用。允许在盛水的浴缸、淋浴、洗脸盆或其他器皿附近使用本器具。



- 该产品具有防水性能。适合在沐浴或淋浴时使用，也可以放在水龙头下清洗。出于安全原因，该产品在使用时不能连接电线。
- 电源部件适合在 100 - 240 伏的电源电压下工作。
- 该电源部件可将 100-240 伏的电压转换为 24 伏以下的安全低电压。

显示屏 充电

快速充电：电池电量耗尽后，当您将产品连接到电源插座时，电池充电指示灯将逐个亮起并重复循环。产品包含的电量足够完成一次剃须时，底部的电池充电指示灯开始缓慢闪烁。



产品如果继续充电，底部的电池充电指示灯先是闪烁，然后持续亮起。然后，第二个指示灯闪烁，之后持续亮起，以此类推，直至本产品充满电。

电池已完全充满



电池充满电后，所有电池充电指示灯都将呈白色持续亮起。

注意： 电池充满电后，显示屏会在 30 分钟后自动关闭。

电池电量不足



当电池电量几乎耗尽时，电池充电指示灯的底灯会呈橙色闪烁。

电池剩余电量



剩余的电池电量由持续亮起的充电指示灯来表示。

“拔出插头即可使用”提示



“拔出插头即可使用”符号闪烁，提醒您应先断开产品与电源插座的连接后才能打开本产品。

旅行锁



您可以在携带剃须刀旅行之前将其锁住。旅行锁可防止剃须刀被意外打开。

启用旅行锁后，旅行锁符号会持续亮起。旅行锁启用后，旅行锁符号将闪烁。

禁用旅行锁后，旅行锁符号会短暂亮起且剃须刀会发出短促声音。产品启动并且现在又可以使用了。

充电

使用电源部件充电

第一次使用本产品之前，以及电池充电指示灯指示电池电量不足 (请参见 '充电') 时，请为本产品充电。

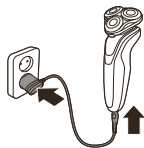
充电约需 1 小时。完全充电的产品在不连接电源的情况下最长可使用达 50 分钟。

注意：不能在充电时使用本产品。

- 1 确保产品电源已关闭。
- 2 将小插头插入本产品，然后将电源部件插入电源插座。

电池充电指示灯指示产品正在充电。

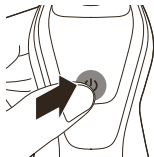
- 3 充电之后，从电源插座上拔下电源部件，并从本产品上拔下小插头。



使用本产品

注意：本产品只能在不接电源的情况下使用。

打开或关闭产品



要打开或关闭本产品，请按一下开/关按钮。

显示屏将亮起几秒钟时间，以显示电池剩余电量状态。

剃须

皮肤适应期

前几次剃须可能不会带给您预期效果，并且您的皮肤可能会受到轻度刺激。这是正常的。您的皮肤和胡须需要时间适应任何新的剃须系统。为了让您的皮肤适应这款新产品，我们建议您在 3 周时间内定期（至少每周 3 次）仅使用本产品剃须。

注意： 本产品只能在不接电源的情况下使用。

干剃

- 1 启动产品。
- 2 让剃须刀头在您的皮肤上作迂回运动，以刮剃向不同方向生长的所有须发。轻轻按压，以获取舒适贴面的剃须感受。

注意： 不要用力按压剃须刀，这样做可能会导致皮肤受刺激。

- 3 每次使用后，请关闭并清洁本产品。

湿剃

要获得更舒适的剃须体验，您也可以先用剃须泡沫或剃须啫喱将脸弄湿，然后再用本产品进行剃须。

要用剃须泡沫或剃须啫喱剃须，请按照下面的步骤执行操作：





1 用水润湿皮肤。



2 在皮肤上涂抹剃须泡沫或剃须啫喱。



3 在水龙头下冲洗一下剃须刀头部件，确保剃须刀头部件可以在您的皮肤上顺畅滑动。

4 启动产品。



5 让剃须刀头在您的皮肤上作迂回运动，以刮剃向不同方向生长的所有须发。轻轻按压，以获取舒适贴面的剃须感受。

注意：不要用力按压剃须刀，这样做可能会导致皮肤受刺激。

注意：定期冲洗剃须刀头部件，确保其能够继续在您的皮肤上顺畅滑动。

6 擦干面部。

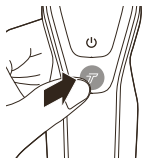
7 每次使用后，请关闭并清洁本产品。

注意：确保冲洗干净本产品上的所有泡沫或剃须啫喱。

Turbo 设置

本产品配有 Turbo 设置。使用该功能，您可以快速剃除难以到达部位的须发。

- 1 启动产品。
- 2 要启用 Turbo 设置，请在启动产品后按一下 Turbo 按钮。



- 3 让剃须刀头在您的皮肤上作迂回运动，以刮剃向不同方向生长的所有须发。轻轻按压，以获取舒适贴面的剃须感受。

注意：不要用力按压剃须刀，这样做可能会导致皮肤受刺激。

- 4 要禁用 Turbo 设置，请按一下 Turbo 按钮。

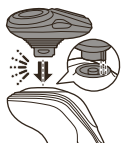
使用卡入式附件

拆卸或安装卡入式附件

- 1 确保产品电源已关闭。
- 2 将附件竖直抽离产品。

注意：将附件从产品上抽出时，不要旋转。

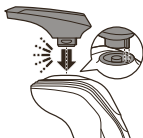




- 3 将附件的凸缘插入本产品顶部的槽内。然后，按下附件将其安装到本产品上（可听到“咔哒”一声）。

使用精确修剪器附件

您可使用修剪器附件修剪鬓角和须髥。



- 1 将附件安装到产品上（可听到“咔哒”一声）。
- 2 启动产品。



- 3 将精确修剪器附件垂直放在皮肤上，向下移动产品，同时轻轻按压。
- 4 使用后要清洁附件。

清洁

在水龙头下冲洗剃须刀

每次使用后请清洁剃须刀，以获得出色性能。

使用热水要当心。切记先检查水温是否太高，以防烫手。

不要用毛巾或纸巾擦拭剃须刀头部件，因为这样可能会损坏剃须刀头。

冲洗剃须刀头部件时，水可能会从剃须刀底座中滴出。这属于正常现象。

- 1 启动产品。



2 用温水冲洗剃须刀头部件。



3 关闭产品。按下释放按钮，打开剃须刀头部件。



4 在水龙头下冲洗胡茬储藏室。



5 用温水冲洗剃须刀头支架。

6 小心地甩掉多余水分并彻底晾干剃须刀头支架。



7 合上剃须刀头支架（可听到“咔哒”一声）。

彻底清洁方法

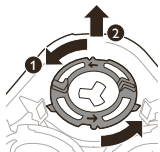
1 关闭产品。



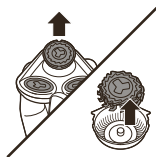
2 按下释放按钮，打开剃须刀头部件。



3 将剃须刀头支架从剃须刀头部件的底部抽离。

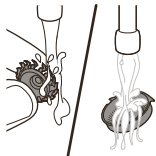


4 逆时针旋转固定环并将其取下。



5 从剃须刀头支架上卸下剃须刀头。每个剃须刀头都包括刀片和网罩。

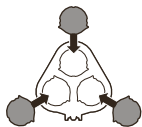
注意：不要同时清洁多组刀片和网罩，因为它们都是相互匹配的。如果不小心将刀片装到了错误的网罩上，则需要数周时间才能恢复产品的出色剃须性能。



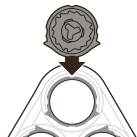
6 在水龙头下清洁刀片和网罩。



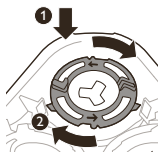
7 将刀片重新装回至网罩。



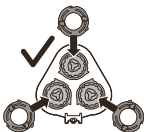
8 将剃须刀头装到剃须刀头支架中。



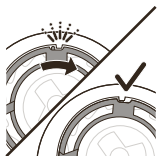
注意：确保剃须刀头的凸缘正好装入剃须刀头支架的凹槽。



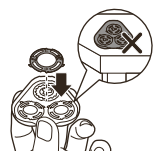
9 将固定环装回剃须刀头支架并将其顺时针旋转（听到“咔哒”一声）。



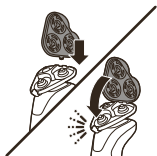
- 各固定环均具有两个凹槽和两个凸缘，正好装入剃须刀头支架的凸缘和凹槽内。



- 顺时针旋转固定环，直至听到“咔哒”一声，表明固定环已就位。



注意：当您重新插入剃须刀头并重新安装固定环时，请将剃须刀头支架握在手中。切勿将剃须刀头支架放在平面上，否则可能会损坏剃须刀头。



- 10 将剃须刀头支架的铰链重新卡入剃须刀头部件的槽内。合上剃须刀头支架。

清洁修剪器附件

每次使用后都要清洁修剪器附件。

- 1 打开装有精确修剪器附件的产品。
- 2 在温水水龙头下冲洗附件。
- 3 关闭产品。



- 4 小心地甩干多余的水，然后将附件晾干。



注意：切勿用毛巾或纸巾擦干修剪器附件，可能会损坏修剪齿。

为获得最佳效果，请每隔六个月用一滴缝纫机油润滑附件齿部。

存放

建议您将产品及其配件晾干后再将保护盖放在配件上，或将剃须刀存放在收纳袋中。

注意：随附的附件可能因产品而异。包装盒上会显示随附于您产品的附件。

更换剃须刀头



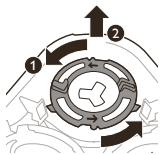
为获得更好剃须效果，建议每两年更换一次剃须刀头。立即更换损坏的剃须刀头。务必使用原装飞利浦剃须刀头进行更换。

- 1 关闭产品。
- 2 按下释放按钮，打开剃须刀头部件。



- 3 将剃须刀头支架从剃须刀头部件的底部抽离。

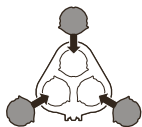




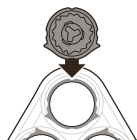
- 4 逆时针旋转固定环并将其取下。将其存放在安全的地方。



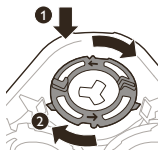
- 5 从剃须刀头支架上卸下剃须刀头。
立即丢弃用过的剃须刀头，以免与新的剃须刀头混淆。



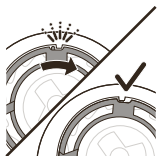
- 6 将新的剃须刀头装到剃须刀头支架中。



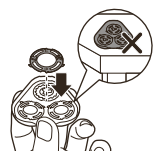
注意： 确保剃须刀头的凸缘正好装入剃须刀头支架的凹槽。



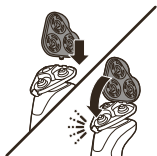
- 7 将固定环装回到剃须刀头上。
各固定环均具有两个凹槽和两个凸缘，正好装入剃须刀头支架的凸缘和凹槽内。



- 8 顺时针旋转固定环，直至听到“咔哒”一声，表明固定环已就位。



注意：当您重新插入剃须刀头并重新安装固定环时，请将剃须刀头支架握在手中。切勿将剃须刀头支架放在平面上，否则可能会损坏剃须刀头。



- 9 将剃须刀头支架的铰链重新卡入剃须刀头部件的槽内。合上剃须刀头支架（可听到“咔哒”一声）。

订购配件

如需购买附件或备件，请访问 www.philips.com/parts-and-accessories 或联系您的飞利浦经销商。您还可以联系所在国家/地区的飞利浦客户服务中心（请参阅保修卡了解详细联系信息）。

可选配以下附件和备件：

- SH50 飞利浦剃须刀头
- HQ110 飞利浦剃须刀头清洁喷雾剂
- RQ111 飞利浦胡须造型器附件
- HQ8505 电源部件

注意：配件可用性可能因国家/地区而异。

回收



- 此符号表示该产品不能与一般的生活垃圾一同处理 (2012/19/EU)。



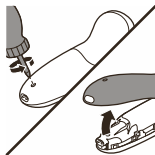
- 此符号表示该产品含有一个内置的充电电池，该电池不能与一般生活垃圾 (2006/66/EC) 一同丢弃。请您将产品送到官方收集中心或飞利浦服务中心，请专业人士移除充电电池。
- 遵循您的国家/地区有关分类回收电子电气产品和充电电池的规定。正确弃置产品有助于避免对环境和人类健康造成不良后果。

拆下充电电池

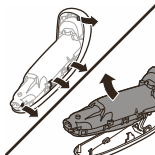
必须在丢弃本产品前拆下充电电池。卸下电池之前，请确保本产品与电源断开连接并且电池电量已耗尽。

当您使用工具打开本产品时以及在您弃置充电电池时，请采取必要的安全保护措施。

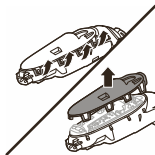
注意，电池带非常锋利。



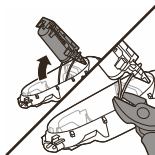
1 使用螺丝刀取出后面板中的螺钉。拆除后面板。



2 将钩子向外掰，取出电源部件。



3 脱开安全钩，取下电源部件的前面板。



4 用一把钢丝钳剪下电池带。

部件名称	产品中有害物质的名称及含量					
	有害物质					
	铅 (Pb)	汞 (Hg)	镉 (Cd)	六价铬 (Cr (VI))	多溴联苯 (PBB)	多溴二苯醚 (PBDE)
PCB's 集成电路板	X	○	○	○	○	○
Electrical contact pins 电接触片	X	○	○	○	○	○
Power plug 电源插头	X	○	○	○	○	○
Internal metal parts 内部金属件	X	○	○	○	○	○

本表格依据SJ/T 11364的规定编制。

○: 表示该有害物质在该部件所有均质材料中的含量均在GB/T 26572规定的限量要求以下。

X: 表示该有害物质至少在该部件的某一均质材料中的含量超出GB/T 26572规定的限量要求。

- 该表格中所显示的“有害物质”在产品正常使用情况下不会对人身和环境产生任何伤害。

- 该表格中所显示的“有害物质”及其存在的部件向消费者和回收处理从业者提供相关物质的存在信息，有助于产品废弃时的妥善处理。

保修和支持

如需信息或支持，请访问
www.philips.com/support 或阅读保修卡。

故障种类和处理方法

本章归纳了使用本产品时最常见的一些问题。如果您无法根据以下信息解决问题，请访问 www.philips.com/support 查阅常见问题列表，或联系您所在国家/地区的客户服务中心。

问题	可能的原因	解决方法
产品的剃须效果没有以前好。	剃须刀头已损坏或磨损。	更换剃须刀头 (请参见 '更换剃须刀头')。
	毛发或污垢堵塞了剃须刀头。	按照以下彻底清洁方法 (请参见 '彻底清洁方法') 的步骤清洁剃须刀头。

问题	可能的原因	解决方法
按下开/关按钮时，产品不工作。	产品仍然没有连接电源插座。出于安全原因，本产品在使用时不能连接电线。	拔掉本产品插头并按开/关按钮打开产品。
	充电电池的电量已耗尽。	给电池充电 (请参见 '充电')。
	旅行锁已被激活。	按住开/关按钮 3 秒钟以解除旅行锁。
	剃须刀头部件被污染或损坏，导致马达无法运行。	清洁剃须刀头 (请参见 '清洁') 或将其更换 (请参见 '更换剃须刀头')。
	剃须刀头已损坏或磨损。	更换剃须刀头。(请参见 '更换剃须刀头')
水从本产品底部漏出。	在清洁过程中，水可能聚集在本产品的机身内部与外壳之间。	这是正常现象，而且没有危险，因为所有电子元件都封闭在本产品内部的密封电源部件中。

PHILIPS

产品：飞利浦电动剃须刀

型号：S5620

额定电压：220V~

额定频率：50Hz

额定输入功率：9W

生产日期：请见产品本体

产地：中国广东珠海

IPX4



珠海经济特区飞利浦家庭电器有限公司

中国珠海市三灶镇琴石工业区

全国顾客服务热线: 4008 800 008

本产品根据国标 GB4706.1-2005,

GB4706.9-2008制造

保留备用

发行日期: 19/7/2019

3000.043.4412.119/7/2019

> 75% 循环再造纸

保留备用



>75 % recycled paper
>75 % papier recyclé