

PHILIPS

S8860



BC

IMPORTANT SAFETY INSTRUCTIONS

When using an electrical product, basic precautions should always be followed, including the following:

Read all instructions before using this product.

DANGER

To reduce the risk of electric shock:

- Do not reach for a corded product or charging pad that has fallen into water. Unplug immediately.
- The power plug, charging pad and the accessories connected to it are not for immersion or for use in shower.
- Do not use an extension cord with this product.
- Do not place or store the charging pad where it can fall or be pulled into a tub or sink. Do not place or drop a charging pad into water or other liquid.
- Always unplug the charging pad from the electrical outlet immediately after use, except when the product is (re)charging.
- Unplug and remove power cord before cleaning.

WARNING

To reduce the risk of burns, fire, electric shock, or injury to persons:

- The batteries used in this product may present a fire or chemical burn hazard if mistreated. Do not disassemble, heat above 100°C (212°F) or incinerate.

- Close supervision is required when this product or charging pad is used by, on, or near children, or persons with limited physical, sensory, or mental capabilities or invalids.
- Use this product and charging pad for its intended household use as described in this manual. Do not use attachments not recommended by Philips North America LLC.
- Never operate this product and charging pad if it has a damaged cord or charging plug, if it is not working properly, if it has been dropped or damaged, or dropped into water while plugged in. For assistance call 1-800-243-3050.
- Keep the product, charging pad, cord, charging plug and any attachments away from heated surfaces.
- Never drop or insert any object into any opening.
- Do not use the power plug in or near an electrical outlet that contains an electric air freshener to prevent damage to the power plug.
- Do not charge, clean or plug in product and charging pad outdoors or operate where aerosol (spray) products are being used or where oxygen is being administered.
- Always check cutters and combs before using the product. Do not use the product if cutters or combs are damaged, as injury may occur.
- Do not use the product with a damaged or broken cleansing brush head. Replace cleansing brush head immediately.
- Always attach power plug to cord with USB plug first, then connect power plug directly to outlet. To disconnect, turn product off. Then remove power plug from outlet and USB plug from power plug.

- Never put the product, charging pad or attachments in direct sunlight or store at a temperature above 140°F (60°C).
- Keep the cord, charging pad and power plug dry at all times. Do not handle with wet hands.
- To prevent possible damage to the cord, do not wrap cord around the product or charging pad.
- Do not attempt to open the product to remove or replace the built-in rechargeable battery.
- Only use the power plug, USB plug and other accessories supplied with the product.
- The charging pad is not intended for use in a car. It may interfere with the automotive electronic systems.
- For safety reasons, do not use the product while driving.

SAVE THESE INSTRUCTIONS

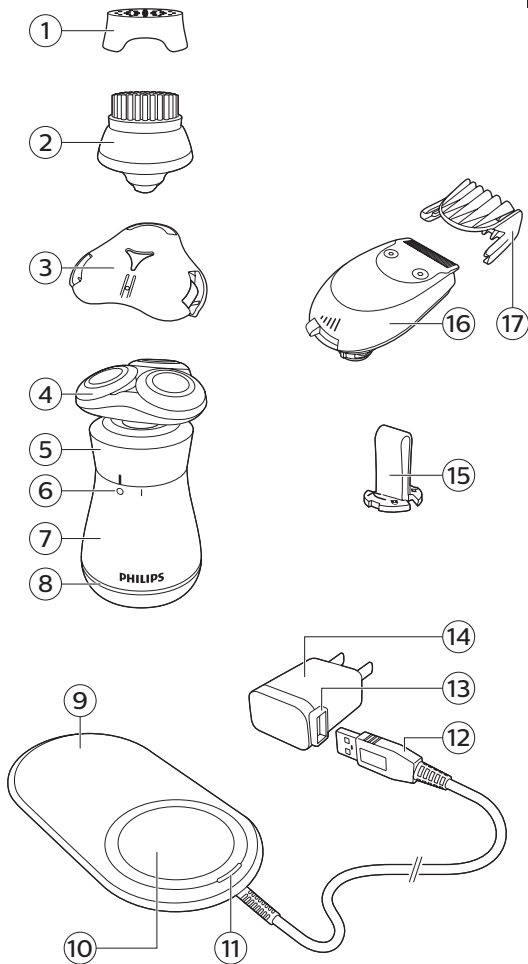
Introduction

Congratulations on your purchase and welcome to Philips.

To fully benefit from the support that Philips offers, register your product at **www.philips.com/welcome**.

Contents

IMPORTANT SAFETY INSTRUCTIONS_____	2
Introduction_____	4
General description (Fig. 1)_____	7
Charging_____	7
Using the product_____	9
Cleaning and maintenance_____	15
Replacement_____	18
Storage_____	20
Accessories_____	20
Assistance_____	20
Disposal_____	21
Full Two-Year Warranty_____	21
45-DAY MONEY-BACK GUARANTEE_____	23



General description (Fig. 1)

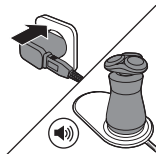
- 1 SmartClick cleansing brush protection cap
 - 2 SmartClick cleansing brush
 - 3 SmartClick shaving unit protection cap
 - 4 SmartClick shaving unit
 - 5 On/off ring
 - 6 On/off indications
 - 7 Handle
 - 8 Battery low indicator
 - 9 Charging pad
 - 10 Charging platform
 - 11 Charging indicator
 - 12 USB plug
 - 13 Socket for USB plug
 - 14 Power plug
 - 15 Retaining ring holder
 - 16 SmartClick beard styler
 - 17 SmartClick beard styler comb
- Not shown: cleaning brush, pouch

Charging

Charge the product before you use it for the first time and when the battery low indicator indicates the battery is almost empty.

Charging takes approx. 2 hours. A fully charged product has an operating time of up to 30 minutes.

- Charging, recharging or using the product at temperatures below 40°F (4,5°C) or higher than 95°F (35°C) adversely affects the lifespan of the battery.
- If the product is subjected to a major change in temperature, pressure or humidity, let the product acclimatize for 30 minutes before use.



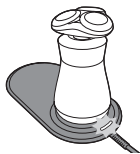
- The charging pad is a Class III construction.

- 1 Attach USB plug to power plug.
- 2 Put the power plug into any 100V to 240C AC outlet and place the product onto the circular section of the charging platform of the charging pad. Use only the power plug, cord and USB plug provided.
 - The charging pad beeps when the product is correctly placed onto the charging platform.
- 3 After charging, remove the power plug from the wall outlet.

Note: An adapter plug may be necessary for cord usage in some foreign countries. Use an attachment plug adapter of the proper configuration for power outlet.

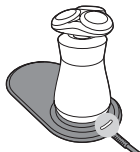
Battery charging

When the product is charging, the charging indicator flashes white.



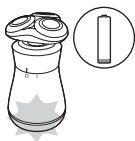
Battery fully charged

When the battery is fully charged, the charging indicator lights up white continuously.



Battery low

When the battery is almost empty, the battery low indicator flashes orange.



Using the product

Always check the product and all accessories before using. Do not use the product or any accessory if it is damaged, as this may cause injury. Always replace a damaged part with one of the original type.



This symbol indicates that the product can be used in the bath or shower.

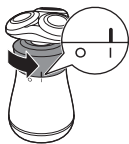
- Use this product for its intended household use as described in this manual.
- For hygienic reasons, the product should only be used by one person.

Put it to the test

- 21 Day Trial and Conversion Process. It is a fact that your skin and beard need time to adjust to a new grooming system.
- Use your new shaver exclusively for 3 weeks to fully enjoy the closeness of a Philips shave.
- At first you may not get as close a shave as you expect, or your face may even become slightly irritated. This is normal since your beard and skin will need time to adjust. Invest 3 weeks and you'll soon experience the full joy of your new shaver.
- Stick with it! If you alternate shaving methods during the adjustment period, it may make it more difficult to adapt to the Philips shaving system.

- If you are still not convinced after 21 days, Philips will refund you the full purchase price as long as the request is received within 45 days of purchase.

Switching the product on and off



- 1 To switch on the product, turn the on/off ring counterclockwise to the 'on' indication (I).
- 2 To switch off the product, turn the on/off ring clockwise to the 'off' indication (O).

Shaving

For best results on skin comfort, pre-trim your beard if you have not shaved for 3 days or longer.

Dry shaving



- 1 Switch on the product.
- 2 Move the shaving heads over your skin in circular movements to catch all hairs growing in different directions. Exert gentle pressure for a close, comfortable shave.

Note: Stretch your skin with your free hand so blades can lift and cut whiskers. Gently press shaver to skin so the floating heads can follow the contours of your face. Do not press too hard, this can cause skin irritation.

- 3 Switch off and clean the product after each use.

Wet shaving

You can also use this product on a wet face with shaving foam or shaving gel.



- 1 Apply some water to your skin.
- 2 Apply shaving foam or shaving gel to your skin.



- 3 Rinse the shaving unit under the tap to ensure that the shaving unit glides smoothly over your skin.
- 4 Switch on the product.
- 5 Move the shaving heads over your skin in circular movements to catch all hairs growing in different directions. Exert gentle pressure for a close, comfortable shave.

Note: Rinse the shaving unit regularly to ensure that it continues to glide smoothly over your skin.

- 6 Rinse and dry your face gently.
- 7 Switch off and clean the product after each use.

Note: Make sure you rinse all foam or shaving gel off the product.

Using the Smartclick attachments

Removing or attaching a SmartClick attachment

- 1 Make sure the product is switched off.
- 2 Pull the attachment straight off the product.

Note: Do not twist the attachment while pulling.





- 3 Insert the lug of the desired attachment into the slot in the top of the product. Then press down the attachment to attach it to the product ('click').

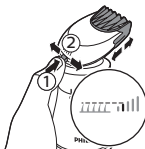
Using the beard styler attachment with comb

You can use the beard styler with the comb attached to style your beard at one fixed setting, but also at different length settings. You can also use it to pre-trim any long hairs before shaving for a more comfortable shave.

The length settings on the beard styler correspond to the remaining hair length after cutting and range from 3/64 in.–3/16 in. (1–5mm).



- 1 Attach the beard styler to the product ('click'). Slide the comb straight into the guiding grooves on both sides of the beard styler ('click').



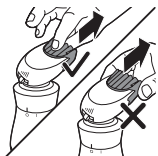
- 2 Press the length selector and then push it to the left or right to select the desired hair length setting.
- 3 Switch on the product.



- 4 Move the product upwards while exerting gentle pressure. Make sure the front of the comb is in full contact with the skin.
- 5 Clean the beard styler after use.

Using the beard styler attachment without comb

You can use the beard styler without the comb to contour your beard, moustache, sideburns or neckline to a length of 1/32in./0.5mm.



- 1 Pull the comb off the beard styler.

Note: Grab the comb in the center to pull it off the beard styler. Do not pull at the sides of the comb.

- 2 Switch on the product.



- 3 Hold the beard styler perpendicular to the skin and move the product downwards while you exert gentle pressure.
- 4 Clean the beard styler after use.

Using the cleansing brush attachment

Use the rotating cleansing brush with your daily cleansing cream. The cleansing brush removes oil and dirt, contributing to a healthy and oil-free skin. Use it no more than twice a day.

Do not use the cleansing brush on damaged or irritated skin or on wounds.

- 1 Make sure the product is switched off.
- 2 Remove the shaving unit from the product and attach the cleansing brush.



- 3 Moisten the cleansing brush with water.

Do not use the product with a dry brush, as this can irritate the skin.



- 4 Moisten your face with water and apply a cleanser to your face.
- 5 Switch on the product.



- 6 Gently move the brush across your skin from the nose towards the ear. Do not push the cleansing brush too hard onto the skin.



- 7 After approx. 20 seconds, move the product to your other cheek.

Do not cleanse the sensitive area around your eyes.



- 8 After approx. 20 seconds move the product to your forehead. Gently move the brush from left to right.

Note: Do not cleanse any zone longer than 20 seconds.

- 9 After the treatment, rinse and dry your face. Your face is now ready for the next step of your daily skincare routine.
- 10 Clean the cleansing brush after use.

Cleaning and maintenance

- Regular cleaning guarantees better shaving results.
- Never clean, remove or replace shaving unit while motor is on.
- Do not apply pressure to shaving head combs.
- Do not touch shaving heads with hard objects as this may dent or damage precision-made slotted combs.
- Do not use abrasives, scourers or aggressive liquids such as gasoline or acetone to clean the shaver, charging pad or any attachments.

Cleaning the product

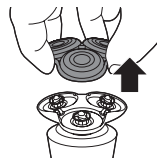
Clean the shaver after every shave for optimal performance.

Be careful with hot water. Always check if the water is too hot, to prevent burning your hands.

Never dry the shaving unit with a towel or tissue, as this may damage the shaving heads.

While rinsing shaving heads, water may drip out of the base of shaver. This is a normal occurrence.

- 1 Switch off the product.
- 2 Rinse the shaving unit under a warm tap.



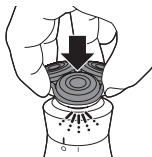
- 3 Pull the shaving head holder off the bottom part of the shaving unit.



- 4 Rinse the shaving head holder under a warm tap.



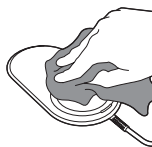
- 5 Carefully shake off excess water and let the shaving head holder air dry.



- 6 Reattach the shaving head holder to the bottom part of the shaving unit ('click').

Cleaning the charging pad

- 1 Wipe the surface of the charging pad with a slightly damp cloth to remove any dirt.
- 2 Dry the surface with a dry cloth after cleaning.



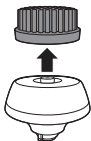
Caution: Always make sure the charging pad is completely dry before connecting to a power outlet.

Cleaning the Smartclick attachments

Cleaning the cleansing brush

- 1 Switch off the product.
- 2 Detach the brush head from the attachment base.

Note: Do not twist the brush head while you pull it off the brush base.



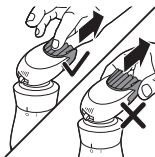
- 3 Clean both parts thoroughly with warm water and mild soap.
- 4 Dry the cleansing brush with a towel being careful not to bend the bristles.

Cleaning the beard styler

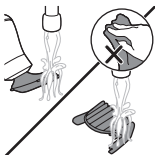
Clean the beard styler after each use.

- 1 Pull the comb off the beard styler.

Note: Grab the comb in the center to pull it off the beard styler. Do not pull at the sides of the comb.



- 2 Switch on the product.



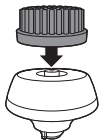
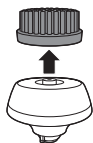
- 3 Rinse the beard styler and the comb separately under a warm tap.
- 4 After cleaning, switch off the product.
- 5 Carefully shake off excess water and let the beard styler and comb air dry.
- 6 For optimal performance, lubricate the teeth of the attachment with a drop of sewing machine oil every 3 months.

Replacement

Replacing the cleansing brush head

The brush head should be replaced every 3 months or earlier if the brush hairs are bent or damaged.

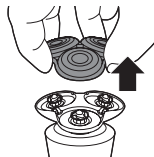
- 1 Switch off the product.
- 2 Detach the brush head from the attachment base.
- 3 Discard the used brush head.
- 4 Attach the new cleansing brush head to the brush base.



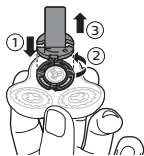
Replacing the shaving heads



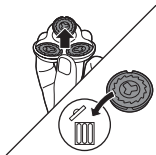
For maximum shaving performance, we advise you to replace the shaving heads once a year. Replace damaged shaving heads immediately. Always replace the shaving heads with original Philips shaving heads (see 'Accessories').



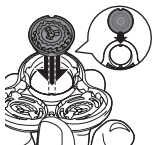
- 1 Switch off the shaver.
- 2 Pull the shaving head holder off the bottom part of the shaving unit.



- 3 Place the retaining ring holder on the retaining ring, turn it counterclockwise and lift it off the shaving head. Remove the retaining ring from the retaining ring holder and repeat this process for the other retaining rings. Place them aside in a safe place.



- 4 Remove the shaving heads from the shaving head holder. Discard the used shaving heads immediately to avoid mixing them with the new shaving heads.

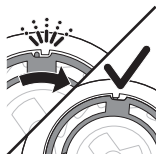


- 5 Place the new shaving heads in the shaving head holder.

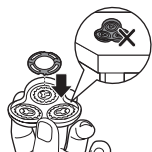
Note: Make sure the notches on both sides of the shaving heads fit exactly onto the projections in the shaving head holder.



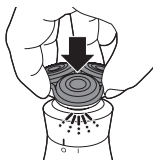
- 6 Place the retaining ring holder on the retaining ring, place it on the shaving head and turn it clockwise to reattach the retaining ring. Repeat this process for the other retaining rings.



- Each retaining ring has two recesses that fit exactly into the projections of the shaving head holder. Turn the ring clockwise until you hear a click to indicate that the ring is fixed.



Note: Hold the shaving head holder in your hand when you reinsert the shaving heads and reattach the retaining rings. Do not place the shaving head holder on a surface, as this may cause damage to the shaving heads.



- 7** Reattach the shaving head holder to the bottom part of the shaving unit ('click').

These products have no other user-serviceable parts. For assistance call 1-800-243-3050.

Storage

- Be sure the product is turned off. Remove cord from outlet before storing it in a safe, dry location where it will not be crushed, banged, or subject to damage.
- Do not wrap cord around the product or charging pad when storing.
- Store cord in a safe location where it will not be cut or damaged.
- Do not place or store the product or charging pad where it can fall or be pulled into a tub or sink, water or other liquid while plugged in.

Accessories

Replacement parts and accessories may be purchased at a store near you or on our website **www.philips.com/store**.

The following accessories are available:

- SH90 Philips shaving heads
- RQ560 Philips cleansing brush head
- RQ111 Philips beard styler

Assistance

For assistance, visit our website: **www.philips.com/support** or call toll free 1-800-243-3050.

Online information is available 24 hours a day, 7 days a week.

Disposal



- This product contains a rechargeable lithium-ion battery which must be disposed of properly.
- Contact your local town or city officials for battery disposal information. You can also call 1-800-822-8837 or visit **www.call2recycle.org** for battery drop-off locations.
- For assistance, visit our website **www.philips.com/support** or call 1-800-243-3050 toll free.
- Your product is designed and manufactured with high quality materials and components, which can be recycled and reused. For recycling information, please contact your local waste management facilities or visit **www.recycle.philips.com**

Full Two-Year Warranty

Philips North America LLC warrants this new product against defects in materials or workmanship for a period of two years from the date of purchase, and agrees to repair or replace any defective product without charge.

IMPORTANT: This warranty does not cover damage resulting from accident, misuse or abuse, lack of reasonable care, the affixing of any attachment not provided with the product or loss of parts or subjecting the product to any but the specified voltage or batteries.*

NO RESPONSIBILITY IS ASSUMED FOR ANY SPECIAL, INCIDENTAL OR CONSEQUENTIAL DAMAGES.

In order to obtain warranty service, simply go to **www.philips.com/support** for assistance.

It is suggested that for your protection you return shipments of product by insured mail, insurance prepaid. Damage occurring during shipment is not covered by this warranty.

NOTE: No other warranty, written or oral, is authorized by Philips North America LLC.

This warranty gives you specific legal rights, and you may also have other rights which vary from state to state. Some states do not allow the exclusion or limitation of incidental or consequential damages, so the above exclusion and limitations may not apply to you.

*Read enclosed instructions carefully.

45-DAY MONEY-BACK GUARANTEE

If you are not fully satisfied with your product send the product back and we'll refund you the full purchase price.

The product must be shipped prepaid by insured mail, insurance prepaid, have the original sales receipt, indicating purchase price and date of purchase, and the money-back guarantee return authorization form enclosed.

We cannot be responsible for lost mail.

The product must be postmarked no later than 45 days after the date of purchase. Philips reserves the right to verify the purchase price of the product and limit refunds not to exceed suggested retail price.

To obtain money-back guarantee return authorization form, call 1-800-243-3050 for assistance.

Delivery of refund check will occur 6–8 weeks after receipt of returned product.

Manufactured for:
Philips Personal Health
a division of Philips North America LLC
P.O. Box 10313, Stamford, CT 06904



This symbol on the product's nameplate means
it is listed by Underwriters' Laboratories, Inc.

PHILIPS and Philips shield are a registered trademarks of
Koninklijke Philips N.V.

©2017 Philips North America LLC.
All rights reserved.

