

IMPORTANT SAFETY INSTRUCTIONS

When using a battery-operated appliance, basic safety precautions should always be followed, including the following:

Read all instructions before using this appliance.

WARNING

To reduce the risk of burns, fire or injury to persons:

1. Close supervision is necessary when this appliance is used by, on, or near children or invalids.
2. Use this appliance for its intended household use as described in this manual. Do not use attachments not recommended by Philips Electronics North America Corporation.
3. Never operate this appliance if it is not working properly, or if it has been dropped or damaged. For assistance call 1-800-243-3050.
4. Do not use outdoors or operate where aerosol (spray) products are being used or where oxygen is being administered.
5. Never put the appliance in direct sunlight or use, store at a temperature between 40°F (4°C) and 100°F (38°C).
6. Always check cutting unit before using. Do not use the appliance if the cutting unit or any of the attachments are damaged, as injury may occur.
7. If appliance will not be used on a regular basis, remove the battery to prevent possible damage due to chemical leakage. If battery does leak, remove it carefully. Do not allow bare skin to touch leaking fluid.

SAVE THESE INSTRUCTIONS

IMPORTANT INFORMATION

CAUTION

- ▶ If the appliance and accessories are subjected to a major change in temperature, pressure or humidity, let them acclimatize for 30 minutes before using.
- ▶ For hygienic reasons, it is recommended that the trimmer be used by only one person.
- ▶ Do not use while bathing, showering or immerse trimmer in water or other liquids as damage to the trimmer may occur.



- ▶ Keep trimmer handle away from water.
- ▶ The trimmer is not intended for use in your ear or nose.
- ▶ Be careful to keep trimmer away from eyes and eyelashes.
- ▶ Never use compressed air, scouring pads, abrasive cleaning agents or aggressive liquids such as gasoline or acetone to clean the appliance.
- ▶ Turn trimmer off before putting on or taking off the comb or cleaning.
- ▶ Make sure your hands and trimmer are dry when inserting the battery.

GENERAL

- ▶ Use this appliance for its intended household use as described in this manual.
- ▶ Use the appliance to trim any unwanted hair on your face and body.
- ▶ If using a trimmer for the first time, test trimmer on a small area of your arm or leg.
- ▶ Do not use the trimmer on sensitive or irritated skin or wounds without consulting your doctor.
- ▶ Be certain your skin is clean. If you have sensitive skin, you may wish to apply talcum powder before and/or after use.
- ▶ It is not necessary to press hard to get a close result. Pressing too hard may cause skin irritation, and the trimmer will not function properly.
- ▶ This appliance has no other user-serviceable parts. For assistance call 1-800-243-3050.



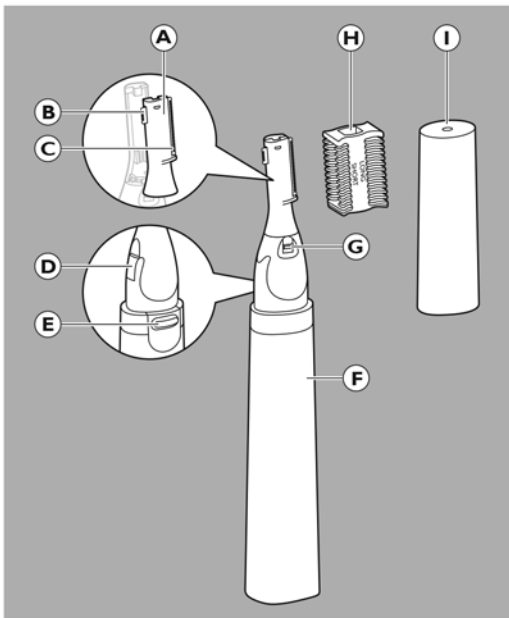
Introduction

Congratulations on your purchase and welcome to Philips Norelco!

To fully benefit from the support that Philips Norelco offers, register your product at www.norelco.com/register



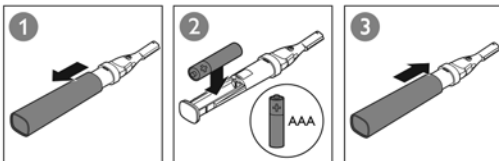
Features



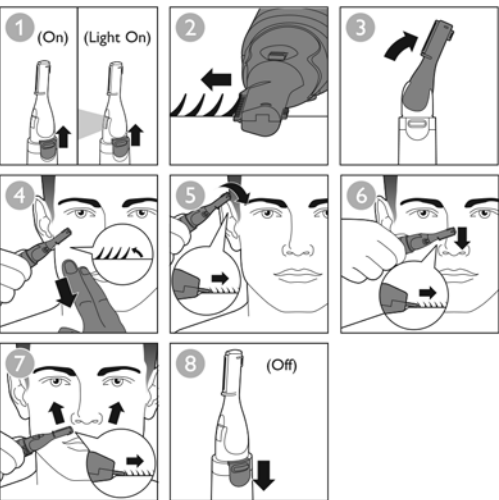
- A Double-Sided Cutting Unit
 - B Small Trimming Element
 - C Large Trimming Element
 - D Built-In Light (NT1100 only)
 - E On/Off Slide Switch
 - F Handle
 - G Cutting Unit Release Slide Switch
 - H Trimming Comb
 - I Protective Cap
- 1 "AAA" 1.5 Volt Alkaline Battery (not included)



Inserting Battery



Precision Trimming

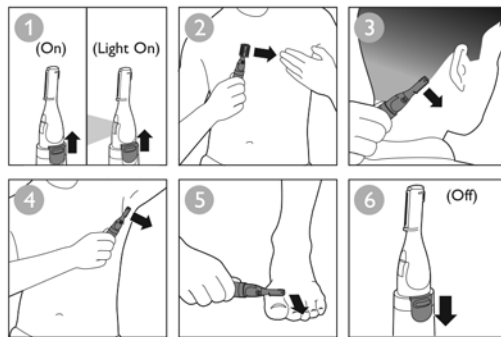


- ▶ Use the small trimming element to trim small areas on your face, such as around ears, around nose, upper lip and moustache. You can also use it to shape eyebrows or remove hair between the eyebrows.
- ▶ The trimmer is not intended for use in your ear or nose.
- ▶ For increased visibility, activate the built-in light (NT1100 only) when switching on the trimmer.
- ▶ Make sure the trimming element is placed flat onto the skin and move it slowly against the direction of hair growth.
- ▶ Tilt the trimmer head to trim hard-to-reach areas.
- ▶ To make hairs stand upright, pull skin taut with one hand while using.

TIP: Do not move trimmer too fast. Make smooth and gentle movements making sure the trimming element is in full contact with the skin.



Body Trimming

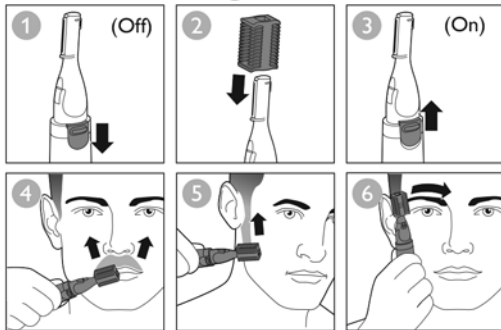


- ▶ Use the large trimming element to remove or touch-up hairs on your body such as chest, neckline, underarms and toes.

TIP: In areas where the hair grows in different directions, move the trimmer upwards, downwards and across.



Trimming With The Comb

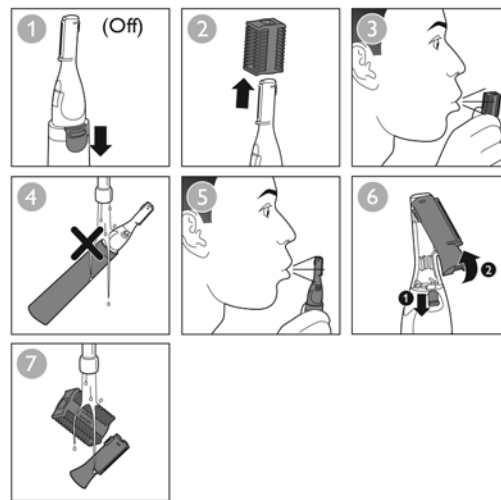


- ▶ The trimming comb has a short side and a long side to trim hairs to two different lengths.
- ▶ Always use the trimming comb in combination with the large trimming element.
- ▶ If trimming for the first time, start with the long side of the comb to prevent trimming hairs too short.

TIP: Move the trimmer slowly against the direction of hair growth making sure the trimmer is always in full contact with the skin when trimming your moustache, sideburns and eyebrows.



Cleaning

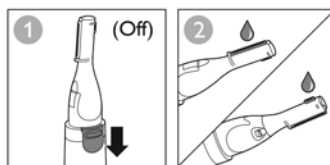


- NOTE: Never immerse the appliance in water or rinse it under the tap.
- ▶ Clean the trimmer and comb after each use.
- ▶ Blow and/or shake off any hair that has accumulated in the cutting element, comb and in the hair chamber.

TIP: For ultimate hygiene, rinse the cutting element and comb separately under warm tap water. Allow to air dry completely before reassembling.



Maintenance



- ▶ Lubricate the trimming teeth twice a year with a drop of sewing machine oil.



Troubleshooting

This chapter summarizes the most common problems you could encounter with the appliance. If you are unable to solve the problem with the information below, visit www.philips.com/support or call 1-800-243-3050 for assistance.

Problem	Possible cause	Solution
The appliance does not work as well as it should.	Hairs may be stuck in the trimmer head or attachment.	Clean the appliance (see 'Cleaning' section).
The appliance pulls on the hairs.	You move the appliance too fast.	Do not move the appliance too fast.
	The disposable battery is empty.	Insert a new battery.
The appliance works, but the result is uneven.	You press the appliance onto the skin too hard.	Do not press the appliance onto the skin too hard, as this may cause the hair length after trimming to deviate from the indicated hair length.
	The comb is not in full contact with the skin.	Make sure the comb is fully in contact with the skin.

Always move the appliance against the direction of hair growth. As not all hairs grow in the same direction, this means that you have to move the appliance up, down and sideways.

The appliance does not work.	The disposable battery is empty or has been inserted incorrectly.	Replace the battery or insert it correctly.
------------------------------	---	---



Disposal

Battery must be removed from the appliance before discarding. Dispose of battery properly. Do not incinerate. Battery may explode if overheated. Do not wrap in metal or aluminum foil. Tape the waste battery terminals before discarding. It is suggested that you contact your local town or city to determine proper battery redemption site(s) in your area.



Assistance

For assistance visit our website www.philips.com/support or call toll free: 1-800-243-3050.



45-Day Money-Back Guarantee

If you are not fully satisfied with your Philips Norelco appliance send the product back and we'll refund you the full purchase price.

The Trimmer must be shipped prepaid by insured mail, insurance prepaid, have the original sales receipt, indicating purchase price and date of purchase, and the money-back guarantee return authorization form enclosed. We cannot be responsible for lost mail.

The Trimmer must be postmarked no later than 45 days after the date of purchase. Philips Norelco reserves the right to verify the purchase price of the product and limit refunds not to exceed suggested retail price.

To obtain money-back guarantee return authorization form, call 1-800-243-3050 for assistance.

Delivery of refund check will occur 6-8 weeks AFTER receipt of returned product.

PHILIPS

NORELCO

Precision Trimmer



NT1000

NT1100

Battery-Operated

Always here to help you

Register your product and get support at www.norelco.com/register



4222 002 8615 3



Full Two-Year Warranty

Philips Electronics North America Corporation warrants each new Philips Norelco product, Models NT1100/NT1000 (except cutters) against defects in materials or workmanship for a period of two years from the date of purchase, and agrees to repair or replace any defective product without charge.

IMPORTANT: This warranty does not cover damage resulting from accident, misuse or abuse, lack of reasonable care, the affixing of any attachment not provided with the product or loss of parts or subjecting the product to any but the specified battery.*

NO RESPONSIBILITY IS ASSUMED FOR ANY SPECIAL, INCIDENTAL OR CONSEQUENTIAL DAMAGES.

In order to obtain warranty service, simply go to www.philips.com or call 1-800-243-3050 for assistance. It is suggested that for your protection you return shipments of product by insured mail, insurance prepaid. Damage occurring during shipment is not covered by this warranty.

NOTE: No other warranty, written or oral, is authorized by Philips Electronics North America Corporation. This warranty gives you specific legal rights, and you may also have other rights which vary from state to state. Some states do not allow the exclusion or limitation of incidental or consequential damages, so the above exclusion and limitations may not apply to you.

*Read enclosed instructions carefully.

Manufactured for:
Philips Consumer Lifestyle
A Division of Philips Electronics North America Corporation
P.O. Box 10313, Stamford, CT 06904

Norelco is a Registered Trademark of Philips Electronics North America Corporation.

PHILIPS is a Registered Trademark of Koninklijke Philips N.V.

© 2015 Philips Electronics North America Corporation. All Rights Reserved.