

Important safety information

Read this important information carefully before you use the appliance and its accessories and save it for future reference. The accessories supplied may vary for different products.

Danger

- Keep the supply unit dry (Fig. 1).

Warning

- To charge the battery, only use the detachable supply unit (A00380) provided with the appliance.
- The supply unit contains a transformer. Do not cut off the supply unit to replace it with another plug, as this causes a hazardous situation.
- This appliance can be used by children aged from 8 years and above and persons with reduced physical, sensory or mental capabilities or lack of experience and knowledge if they have been given supervision or instruction concerning use of the appliance in a safe way and understand the hazards involved. Children shall not play with the appliance. Cleaning and user maintenance shall not be made by children without supervision.
- Always unplug the shaver before you clean it under the tap.
- Always check the appliance before you use it. Do not use the appliance if it is damaged, as this may cause injury. Always replace a damaged part with one of the original type.
- This appliance contains batteries that are non-replaceable.
- Do not open the appliance to replace the rechargeable battery.

Caution

- Never immerse the cleaning system or

the charging stand in water and do not rinse it under the tap (Fig. 1).

- Never immerse the shaver in water. Do not use the shaver in the bath or in the shower.
- Never use water hotter than 60°C to rinse the shaver.
- Only use this appliance for its intended purpose as shown in the user manual.
- For hygienic reasons, the appliance should only be used by one person.
- Never use compressed air, scouring pads, abrasive cleaning agents or aggressive liquids such as petrol or acetone to clean the appliance.
- If your shaver comes with a cleaning system, always use the original Philips cleaning fluid (cartridge or bottle, depending on the type of cleaning system).
- Always place the cleaning system on a stable, level and horizontal surface to prevent leakage.
- If your cleaning system uses a cleaning cartridge, always make sure the cartridge compartment is closed before you use the cleaning system to clean or charge the shaver.
- When the cleaning system is ready for use, do not move it to prevent leakage of cleaning fluid.
- Water may drip from the socket at the bottom of the shaver when you rinse it. This is normal and not dangerous because all electronics are enclosed in a sealed power unit inside the shaver.
- Do not use the supply unit in or near wall sockets that contain an electric air freshener to prevent irreparable damage to the supply unit.

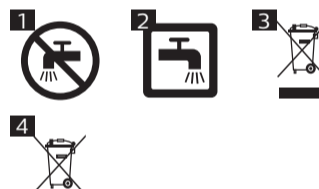
PHILIPS

S1101



 >75 循环再造纸
>75 recycled paper

© 2019 Koninklijke Philips N.V.
All rights reserved
3000.047.4208.1 (18/12/2019)



Electromagnetic fields (EMF)

This Philips appliance complies with all applicable standards and regulations regarding exposure to electromagnetic fields.

General

- This shaver can be safely cleaned under the tap (Fig. 2).
- The supply unit is suitable for mains voltages ranging from 100 to 240 volts.
- The supply unit transforms 100-240 volts to a safe low voltage of less than 24 volts.

Recycling

- This symbol means that this product shall not be disposed of with normal household waste (2012/19/EU) (Fig. 3).
- This symbol means that this product contains a built-in rechargeable battery which shall not be disposed of with normal household waste (Fig. 4) (2006/66/EC). Please take your product to an official collection point or a Philips service center to have a professional remove the rechargeable battery.
- Follow your country's rules for the separate collection of electrical and electronic products and rechargeable batteries. Correct disposal helps prevent negative consequences for the environment and human health.

Removing the rechargeable battery

Only remove the rechargeable battery when you discard the shaver. Before you remove the battery, make sure that the shaver is disconnected from the wall socket and that the battery is completely empty

Take any necessary safety precautions when you handle tools to open the shaver and when you dispose of the rechargeable battery.

- 1 Check if there are screws in the back of the shaver or in the hair chamber. If so, remove them.
- 2 Remove the outer panels of the shaver with a screwdriver or other tool. If necessary, also remove additional screws and/or parts until you see the printed circuit board with the rechargeable battery.
- 3 Remove the rechargeable battery.

Warranty and support

If you need information or support, please visit www.philips.com/support or read the international warranty leaflet.

Warranty restrictions

The shaving heads (cutters and guards) are not covered by the terms of the international warranty because they are subject to wear.

繁體中文

重要安全資訊

使用本產品與其配件前，請先仔細閱讀此重要資訊，並保留說明以供日後參考。提供的配件可能隨產品而異。

危險

- 電源供應裝置請保持乾燥 (圖 1)。
- 此符號表示：禁止於自來水下清潔。

警示

- 如需為電池充電，僅可使用裝置隨附的可拆式電源供應裝置 (型號：A00380)。
- 電源供應裝置內含一個變壓器。請勿切斷電源供應裝置而以其他的插頭取代，否則會造成危險。
- 本產品可供 8 歲以上兒童、身體官能或心智能力退化者，或是經驗與使用知識缺乏者使用，但需有人從旁監督或指示如何安全使用本產品，且使用者需了解使用本產品的潛在危險。請勿讓小孩把玩本產品。若無人監督，請勿讓兒童進行清潔和使用。
- 在水龍頭下沖洗電鬚刀之前，請先拔掉電鬚刀的插頭。
- 使用前請務必檢查本產品。若產品受損請勿使用，以免受傷。零件如有受損，請務必以原型號更換之。
- 請勿拆開本產品更換充電式電池。

警告

- 切勿將清潔系統或充電座浸入水中，或直接在水龍頭下沖洗 (圖 1)。
- 請勿將電鬚刀浸泡在水中。請勿在洗澡或淋浴時使用電鬚刀。

- 切勿使用超過 60°C 的熱水沖洗電鬚刀。
- 本產品僅限用於本使用手冊所述之相關用途。
- 為保衛生起見，請勿多人共用本產品。
- 絕對不可使用壓縮空氣、鋼絲絨、磨蝕性的清潔劑或侵蝕性的液體 (例如汽油或丙酮) 清潔本產品。
- 如果您的電鬚刀配備清潔系統，請務必使用飛利浦原廠清潔液 (補充匣或補充瓶，依清潔系統的類型而定)。
- 請務必將清潔系統放置在穩固、平整的水平面上，以防滲漏。
- 如果您的清潔系統使用的是補充匣，在使用清潔系統清潔電鬚刀或為電鬚刀充電之前，請務必確定補充匣室已關閉。
- 當清潔系統準備就緒可供使用時，應避免移動它，以防清潔液漏出。
- 在您沖洗時，電鬚刀底部的插孔可能會滴水。此為正常現象，並不會造成危險，因為所有的電子零件都密封於電鬚刀內的電力裝置中。
- 警告符號：禁止用在打的水下清洗。(1)

電磁波 (EMF)

本 Philips 產品符合所有電磁場暴露的相關適用標準和法規。

一般

- 此電鬚刀可在水龍頭下 (圖 2) 安全地清洗。
- 本電源供應裝置適用於 100 到 240 伏特的插座電壓。
- 電源供應裝置可以將 100-240 伏特的電壓轉換為低於 24 伏特的安全低電壓。

回收

- 本產品使用壽命結束時請勿與一般家庭廢棄物一併丟棄。請將該產品放置於政府指定的回收站，此舉能為環保盡一份心力。
- 本產品包含內建充電式電池，不得與一般家用廢棄物一併丟棄。請將產品攜至政府指定的回收站或飛利浦服務中心，由專業人員取出充電式電池。
- 請按照您所在國家/地區的規定，分類與回收電子電器產品及充電式電池。正確處理廢棄物有助避免對環境和人類健康的負面影響。

取出充電式電池

請僅在棄置電鬚刀前取出充電式電池。取出電池前，請確認電鬚刀已從牆上插座拔出，且電池電力已完全耗盡。

使用工具打開電鬚刀或棄置充電式電池時，請採取任何必要的安全預防措施。

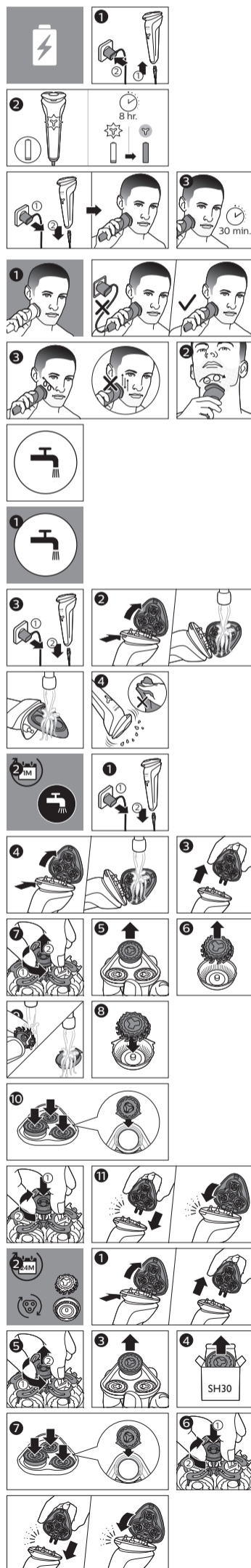
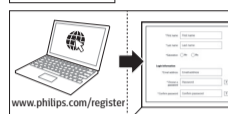
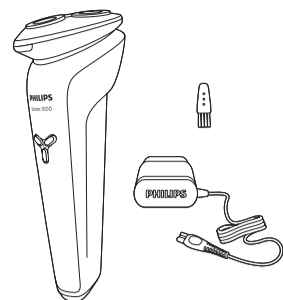
- 1 檢查電鬚刀背面或鬚渣室是否有螺絲。如有的話請拆下。
- 2 使用螺絲起子或其他工具拆除電鬚刀外部面板。必要時，也可拆下其他螺絲和/或零件，直到清楚看見印刷電路板與充電式電池為止。
- 3 取出充電式電池。

保固與支援

如需資訊或支援，請造訪：www.philips.com/support，或參閱全球保固說明書。

保固限制

電鬚刀刀頭 (刀具和刀網) 由於其耗損性，因此不在全球保固範圍內。



設備名稱: 飛利浦電鬚刀 型號: S1101						
單元 Unit	限用物質及其化學符號					
	鉛 (Pb)	汞 (Hg)	鎘 (Cd)	六價鉻 (Cr ⁶⁺)	多溴聯苯 (PBB)	多溴二苯醚 (PBDE)
電路板 PCBs	-	○	○	○	○	○
刀片 Electrical contact pins	-	○	○	○	○	○
電源供應器 Supply unit	-	○	○	○	○	○
金屬部件 Internal metal parts	○	○	○	○	○	○

備考 1. "超出 0.1 wt %" 及 "超出 0.01 wt %" 係指限用物質之百分比含量超出百分比含量基準值。
備考 2. "○" 係指該項限用物質之百分比含量未超出百分比含量基準值。
備考 3. "-" 係指該項限用物質為排除項目。