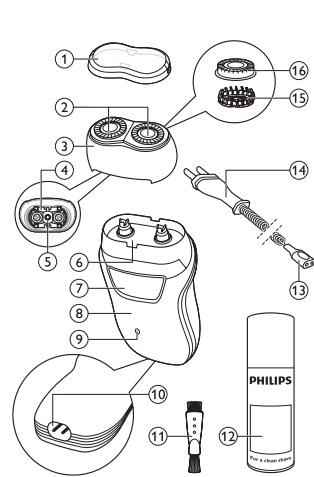
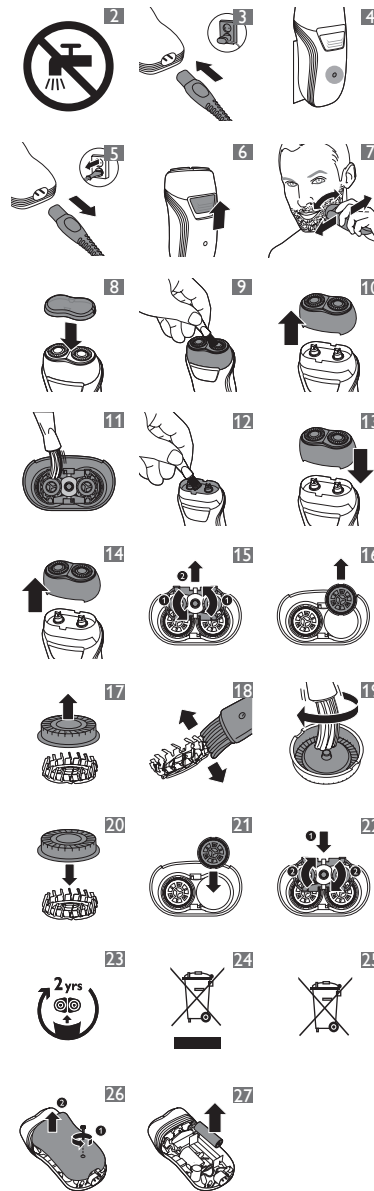




**PHILIPS**



1



## ENGLISH

### Introduction

Congratulations on your purchase and welcome to Philips! To fully benefit from the support that Philips offers, register your product at [www.philips.com/welcome](http://www.philips.com/welcome).

### General description (Fig. 1)

- 1 Protection cap
- 2 Shaving heads
- 3 Shaving unit
- 4 Retaining frame
- 5 Central spring of retaining frame
- 6 Hair chamber
- 7 On/off slide
- 8 Front panel
- 9 Charging light
- 10 Socket for small plug
- 11 Cleaning brush
- 12 Philips Cleaning Spray (Optional)
- 13 Small plug
- 14 Mains cord with plug
- 15 Cutter
- 16 Guard

### Important

Read this user manual carefully before you use the appliance and save it for future reference.

#### Danger

- Keep the appliance and the mains cord dry.
- This symbol means: Forbidden to clean under a running tap (Fig. 2).

#### Warning

- This appliance is not intended for use by persons (including children) with reduced physical, sensory or mental capabilities, or lack of experience and knowledge, unless they have been given supervision or instruction concerning use of the appliance by a person responsible for their safety.
- Children should be supervised to ensure that they do not play with the appliance.
- Do not use the shaver or the mains cord if it is damaged.
- If the mains cord is damaged, always have it replaced with one of the original type in order to avoid a hazard.

### Caution

- Use, charge and store the appliance at a temperature between 5°C and 35°C.
- Only use the mains cord supplied to charge the appliance.
- Only use the cleaning brush supplied.
- Make sure the cleaning brush remains clean.

### Electromagnetic fields (EMF)

This Philips appliance complies with all standards regarding electromagnetic fields (EMF). If handled properly and according to the instructions in this user manual, the appliance is safe to use based on scientific evidence available today.

### Charging

Make sure the shaver is switched off when you start to charge it.  
When you charge the shaver for the first time or after a long period of disuse, let it charge continuously for 12 hours. Charging normally takes approx. 8 hours. Charge the appliance when the motor stops or starts running slower.

**Do not leave the appliance connected to the mains for more than 24 hours.**

- 1 Put the small plug in the shaver (Fig. 3).
- 2 Put the plug in the wall socket.  
The charging light goes on to indicate that the appliance is charging (Fig. 4).
- 3 Remove the plug from the wall socket and pull the small plug out of the shaver when the battery is fully charged (Fig. 5).

*Note: The shaver does not run from the mains. When the battery is empty, you have to recharge the battery before you can use the shaver again.*

*Note: The light of the shaver does not change color and does not go out when the shaver is fully charged.*

### Cordless shaving time

A fully charged shaver has a cordless shaving time of approximately 30 minutes.

### Using the appliance

**The shaver cannot be used directly from the mains.**

- 1 Remove the protection cap.

- 2 Push the on/off slide upwards to switch on the shaver (Fig. 6).
- 3 Move the shaving heads over your skin. Make both straight and circular movements (Fig. 7).

Note: Shave on a dry face only. Do not use the shaver in combination with gel, foam or water.

Note: Your skin may need 2 or 3 weeks to get accustomed to the Philips shaving system.

- 4 Push the on/off slide downwards to switch off the shaver.
- 5 Clean the shaver after every shave (see chapter 'Cleaning and maintenance').
- 6 Put the protection cap on the shaver to prevent damage and to avoid dirt accumulation in the shaving heads (Fig. 8).

Cleaning and maintenance

Never use scouring pads, abrasive cleaning agents or aggressive liquids such as petrol or acetone to clean the appliance.

Clean the shaver after every shave to guarantee better shaving performance. For the best cleaning result, we advise you to use Philips Cleaning Spray. Ask your Philips dealer for information.

After every shave: shaving unit and hair chamber

- 1 Switch off the shaver, remove the plug from the wall socket and pull the small plug out of the shaver.
- 2 Clean the top of the appliance with the cleaning brush supplied (Fig. 9).
- 3 Pull the shaving unit straight up off the shaver (Fig. 10).
- 4 Clean the inside of the shaving unit with the cleaning brush (Fig. 11).
- 5 Clean the hair chamber with the cleaning brush (Fig. 12).
- 6 Put the shaving unit back onto the shaver (Fig. 13).

Every two months: shaving heads

Note: Do not use cleaning agents or alcohol to clean the shaving heads. Only use Philips Cleaning Spray.

- 1 Switch off the shaver, remove the plug from the wall socket and pull the small plug out of the shaver.
- 2 Pull the shaving unit straight up off the shaver (Fig. 14).
- 3 To remove the retaining frame, turn the central spring clockwise (1). Then lift the retaining frame out of the shaving unit (2) (Fig. 15).
- 4 Lift the shaving heads out of the shaving unit. Remove and clean one shaving head at a time. Each shaving head consists of a cutter and a guard (Fig. 16).

Note: Do not clean more than one cutter and guard at a time, since they are all matching sets. If you accidentally mix up the cutters and guards, it may take several weeks before optimal shaving performance is restored.

- 5 Remove the guard from the cutter (Fig. 17).
- 6 Clean the cutter with the short-bristled side of the cleaning brush. Brush carefully in the direction of the arrows (Fig. 18).
- 7 Clean the guard with the long-bristled side of the cleaning brush (Fig. 19).
- 8 Put the cutter back into the guard after cleaning (Fig. 20).
- 9 Put the shaving heads back into the shaving unit (Fig. 21).
- 10 Put the retaining frame back into the shaving unit (1), and turn the central spring anti clockwise (2) (Fig. 22).
- 11 Put the shaving unit back onto the shaver (Fig. 13).

Storage

Keep the appliance dry. Use and store the appliance at a temperature between 5°C and 35°C.

- 1 Switch off the shaver.
- 2 Put the protection cap on the shaver after use to prevent damage and to avoid dirt accumulation in the shaving heads (Fig. 8).

Replacement

Replace the shaving heads every two years for optimal shaving results. Replace damaged or worn shaving heads with Philips shaving heads only (HQ4 for China or HQ56 for the rest of the world). For instructions on how to remove the shaving heads, see chapter 'Cleaning and maintenance', section 'Every two months: shaving heads'.

Accessories

To retain the top performance of your shaver, make sure you clean it regularly and replace its shaving heads at the recommended time.

Shaving heads

- We advise you to replace your shaving heads every two years. Always replace them with Philips shaving heads only (HQ4 for China or HQ56 for the rest of the world) (Fig. 23).

Cleaning

- Use Philips Cleaning Spray to clean the shaving heads thoroughly.

Environment

- Do not throw away the appliance with the normal household waste at the end of its life, but hand it in at an official collection point for recycling. By doing this, you help to preserve the environment (Fig. 24).
- The built-in rechargeable battery contains substances that may pollute the environment. Always remove the battery before you discard and hand in the shaver at an official collection point. Dispose of the battery at an official collection point for batteries. If you have trouble removing the battery, you can also take the shaver to a Philips service centre. The staff of this centre will remove the battery for you and will dispose of it in an environmentally safe way (Fig. 25).

Removing the rechargeable battery

Only remove the rechargeable battery if it is completely empty.

- 1 Remove the plug from the wall socket and pull the small plug out of the shaver.

- 2 Let the shaver run until it stops, undo the screw on the back of the shaver (1) and lift the back panel off the shaver (2) (Fig. 26).
- 3 Remove the rechargeable battery (Fig. 27)

Do not connect the shaver to the mains again after you have removed the battery.

Guarantee and support

If you need information or support, please visit [www.philips.com/support](http://www.philips.com/support) or read the separate worldwide guarantee leaflet.

Guarantee restrictions

The shaving heads (cutters and guards) are not covered by the terms of the international guarantee because they are subject to wear.

Troubleshooting

This chapter summarises the most common problems you could encounter with the appliance. If you are unable to solve the problem with the information below, contact the Consumer Care Centre in your country.

| Problem   | Possible cause   | Solution  |
|---|--|---|
| The shaver does not shave as well as it used to do. | The shaving heads are dirty. You have not cleaned the shaver well enough or you have not cleaned it for a long time. | Clean the shaver thoroughly before you continue shaving. See chapter 'Cleaning and maintenance'.  |
|   | Long hairs obstruct the shaving heads.   | Clean the cutters and guards with the cleaning brush supplied. See chapter 'Cleaning and maintenance', section 'Every two months: shaving heads'. |

The shaving heads are damaged or worn.

Replace the shaving heads. See chapter 'Replacement'.

| Problem  | Possible cause  | Solution  |
|--|---|---|
| The shaver does not work when I push the on/off slide upwards. | The battery is empty.   | Recharge the battery. See chapter 'Charging'.   |
| My skin is irritated after shaving.                            | Your skin needs time to get used to the Philips shaving system. | Skin irritation during the first 2-3 weeks of use is possible. After this period, the skin irritation usually disappears.   |
| The rotation speed of the shaving heads is lower than usual.   | Too much dirt has collected in the shaving heads.               | Clean the shaving heads. See chapter 'Cleaning and maintenance'.  |
|  | The battery is empty  | Recharge the battery. See chapter 'Charging'.   |
| The appliance makes a strange noise.                           | Too much dirt has collected in the shaving heads.               | Clean the shaving heads. After cleaning, lubricate the central point on the inside of the guards with Philips Cleaning Spray. See chapter 'Cleaning and maintenance'. |
|  | The shaving heads are damaged or worn.                          | Replace the shaving heads. See chapter 'Replacement'.   |

简体中文

簡介

恭喜您購買本產品並歡迎加入飛利浦！請於 [www.philips.com/welcome](http://www.philips.com/welcome) 註冊您的產品，以善用飛利浦提供的支援。

一般說明 (圖 1)

- 1 保護蓋
- 2 電鬚刀刀頭
- 3 電鬚刀組
- 4 固定架
- 5 固定架的中央彈簧
- 6 毛髮收集室
- 7 開/關 (On/Off) 滑動開關
- 8 正面護板
- 9 充電指示燈
- 10 小插頭插座
- 11 清潔刷
- 12 飛利浦噴霧清潔劑 (選購)
- 13 小插頭
- 14 電源線附插頭
- 15 刀具
- 16 刀網

重要事項

使用本產品前，請先仔細閱讀本使用手冊，並保留說明以供日後參考。

- 危險**
- 請保持產品本身及電源線乾燥。
  - 此符號表示：禁止在水龍頭下清洗。(圖 2)

- 警告**
- 基於安全考慮，在缺乏監督及適當指示之下，本產品不適用於孩童及任何身體、知覺、或心理功能障礙者，或缺乏使用經驗及知識者。
  - 請勿讓孩童使用本產品或將本產品當成玩具。
  - 若有損壞，請勿使用本電鬚刀或電線。
  - 如果電源線損壞，即務必更換與原來型號相同的電源線，以免發生危險。

- 警告**
- 請在 5° C 到 35° C 之間的溫度環境中使用、充電、存放本產品。
  - 只能使用產品所附的電源線為產品充電。
  - 只能使用隨附的清潔刷。
  - 清潔刷請務必保持乾淨。

**電磁波 (EMF)**  
本飛利浦產品符合電磁波 (Electromagnetic fields, EMF) 所有相

關標準。只要使用方式正確並依照本使用手冊之說明進行操作，根據現有的科學研究資料，使用本產品並無安全顧慮。

充電

開始充電之前，務必將電鬚刀的電源關閉。  
當您首次為電鬚刀充電時，或長期未使用後，請讓本產品連續充電 12 小時。一般正常充電約需 8 小時。當馬達停止運轉或運轉開始緩慢時，請為產品充電。

**不要讓電鬚刀連續連接電源插座超過 24 小時。**

- 1** 將小插頭插上電鬚刀。(圖 3)
- 2** 將插頭插入電源插座。
  - 充電指示燈亮起，表示產品正在進行充電。(圖 4)
- 3** 電池完全充滿後，將插頭從牆上插座拔出，並將小插頭從電鬚刀上拔下。(圖 5)

注意：電鬚刀無法插電運轉。電池耗盡時，您必須先讓電池充電，才能再度使用電鬚刀。

注意：電鬚刀充飽電力後，電鬚刀指示燈不會變色，也不會熄滅。

無線刮鬚時間

電池充滿的電鬚刀可不插電刮鬚約 30 分鐘。

使用本產品

**電鬚刀無法直接插電使用。**

- 1** 卸下保護蓋。
- 2** 將 On/Off 開關往上推，即可開啟電鬚刀電源。(圖 6)
- 3** 將電鬚刀刀頭在皮膚上移動，請同時用直線及畫圓的方式來移動。(圖 7)

注意：僅可乾刮。使用電鬚刀時，請勿搭配凝露、泡沫或水。

注意：您的皮膚可能需要 2 到 3 週的時間才能完全適應飛利浦電鬚刀系統。

- 4** 將 On/Off 開關往下推，即可關閉電鬚刀電源。
- 5** 每次刮鬚後，請清潔本電鬚刀 (請參閱「清潔與維護」單元)。

- 6** 為電鬚刀蓋上保護蓋以防損壞，並避免污垢累積在刀頭中。(圖 8)

清潔與維護

**絕對不可使用鋼絲絨、磨蝕性的清潔劑或侵蝕性的液體 (例如汽油或丙酮) 清潔本產品。**

在每次刮鬚之後清潔電鬚刀，以保障更好的刮鬚效果。為達最好的清潔效果，建議您使用飛利浦噴霧清潔劑。請向您的飛利浦經銷商洽詢相關資訊。

每次刮鬚後：電鬚刀組與鬚渣室

- 1** 關閉電鬚刀，從牆上插座拔離插頭，並將小插頭拔離電鬚刀。
- 2** 使用隨附的清潔刷清潔產品上方。(圖 9)
- 3** 從電鬚刀中垂直抽出電鬚刀組。(圖 10)
- 4** 使用隨附的清潔刷清潔電鬚刀組內部。(圖 11)
- 5** 使用清潔刷清潔毛髮收集室。(圖 12)
- 6** 將電鬚刀組裝回電鬚刀上。(圖 13)

每兩個月：電鬚刀刀頭

注意：請勿使用清潔劑或酒精清潔電鬚刀刀頭，務必使用飛利浦噴霧清潔劑。

- 1** 關閉電鬚刀，從牆上插座拔離插頭，並將小插頭拔離電鬚刀。
- 2** 從電鬚刀中垂直抽出電鬚刀組。(圖 14)
- 3** 若要移除固定架，請以順時針方向轉動中央彈簧 (1)。然後從電鬚刀組中拿出固定架 (2)。(圖 15)
- 4** 將電鬚刀刀頭從電鬚刀組中拿出，一次取下並清洗一個刀頭。每個電鬚刀刀頭都是由刀具和刀網組成。(圖 16)

注意：因為刀具及刀網是成對的一組，請勿一次清潔超過一組。如果您不小心將刀具及刀網混在一起，可能要花幾週的時間才能恢復最理想的刮鬚效果。

- 5** 取下刀具的刀網。(圖 17)
- 6** 請使用清潔刷的短毛側來清潔刀具。請依箭頭方向小心刷動。(圖 18)

- 7** 請使用清潔刷的長毛側來清潔刀網。(圖 19)

- 8** 清潔後，將刀具放回刀網中。(圖 20)

- 9** 將電鬚刀刀頭裝回電鬚刀組。(圖 21)

- 10** 將固定架裝回電鬚刀組 (1)，並以逆時針方向轉動中央彈簧 (2)。(圖 22)

- 11** 將電鬚刀組裝回電鬚刀上。(圖 13)

收納

請保持本產品乾燥。  
請於 5° C 到 35° C 間使用並存放本產品。

- 1** 請先關閉電鬚刀電源。
- 2** 使用後請為電鬚刀蓋上保護蓋以防損壞，並避免污垢累積在刀頭中。(圖 8)

更換

每隔兩年更換一次電鬚刀刀頭，以確保維持最佳的刮鬚效果。  
損壞或用舊的刀頭限以飛利浦電鬚刀刀頭替換 (中國為 HQ4，其他國家為 HQ56)。  
有關如何取下電鬚刀刀頭的說明，請參閱「清潔與維護」單元之「每兩個月：電鬚刀刀頭」章節。

配件

若要維持電鬚刀的最佳效能，請務必定期清潔電鬚刀，並於建議的時間更換電鬚刀刀頭。

- 電鬚刀刀頭**
- 建議您每兩年即更換電鬚刀刀頭。限以飛利浦電鬚刀刀頭替換 (中國為 HQ4，其他國家為 HQ56)。(圖 23)

- 清潔**
- 使用飛利浦噴霧清潔劑徹底清潔電鬚刀刀頭。

環境保護

- 本產品使用壽命結束時請勿與一般家庭廢棄物一併丟棄。請將該產品放置於政府指定的回收站，此舉能為環保盡一份心力。(圖 24)

- 本產品使用的充電電池含有會污染環境的物質。在丟棄本用品前，或是將該產品放到政府指定回收站前，請務必卸除電池。將電池送到政府指定的電池回收站。若您在拆卸電池時遇到問題，可將本用品帶到飛利浦授權服務中心。服務中心會為您卸下電池，並以對環境無害的方式處理電池。(圖 25)

取出充電電池

**必須將充電電池電力完全耗盡後才能拆卸電池。**

- 1** 將插頭自電源插座拔出，並將小插頭從電鬚刀拔下。
- 2** 讓電鬚刀持續運轉直到完全停止，轉開電鬚刀背面的螺絲 (1)，然後打開電鬚刀的背面模板 (2)。(圖 26)
- 3** 取出充電電池 (圖 27)

**卸除電池後，請勿再次將電鬚刀連接至電源。**

保固與支援

如果您需要資訊或支援，請造訪：  
[www.philips.com/support](http://www.philips.com/support)，或另行參閱全球保證書。

**保固限制**  
電鬚刀刀頭 (刀具和刀網) 由於其耗損性，因此不在全球保固範圍內。

故障排除

本說明概述您使用本產品時最常遇到的問題。如果您無法利用以下資訊解決您遇到的問題，請聯絡您所在國家/地區的客戶服務中心。

| 問題           | 可能原因                           | 解決方法   |
|--------------|--------------------------------|--|
| 電鬚刀不像平常一樣運作。 | 電鬚刀刀頭不潔。<br>電鬚刀清潔不夠徹底或是太久沒有清潔。 | 在您繼續刮鬚之前，請徹底清潔電鬚刀。請參閱「清潔與維護」單元。              |
|              | 長鬚鬚卡住電鬚刀刀頭。                    | 請使用隨附的毛刷清潔刀具及刀網。請參閱「清潔與維護」單元之「每兩個月：電鬚刀刀頭」小節。 |

| 問題                     | 可能原因                    | 解決方法   |
|------------------------|-------------------------|--|
|                        | 電鬚刀刀頭毀壞或磨損。             | 更換電鬚刀刀頭。請參閱「更換」單元。                               |
| 將 on/off 開關往上推，但電鬚刀不動。 | 電池電量完全耗盡。               | 為電池充電。請參閱「充電」單元。                                 |
| 刮鬚之後，皮膚感到刺痛。           | 您的皮膚需要一些時間才能適應飛利浦電鬚刀系統。 | 開始使用的第 2 到 3 週，皮膚可能有過敏現象。過了這段時間，皮膚過敏的症狀通常會消失。    |
| 刀頭的旋轉速度比平常緩慢。          | 過多污垢累積在刀頭中。             | 請清潔電鬚刀刀頭。請參閱「清潔與維護」單元。                           |
|                        | 電池電量完全耗盡                | 為電池充電。請參閱「充電」單元。                                 |
| 產品發出奇怪的噪音。             | 過多污垢累積在刀頭中。             | 請清潔電鬚刀刀頭。清潔後，請使用飛利浦噴霧清潔劑潤滑刀網內側的中心點。請參閱「清潔與維護」單元。 |
|                        | 電鬚刀刀頭毀壞或磨損。             | 更換電鬚刀刀頭。請參閱「更換」單元。                               |