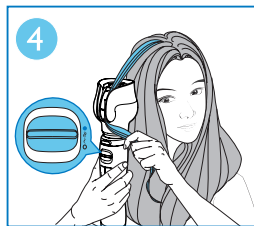
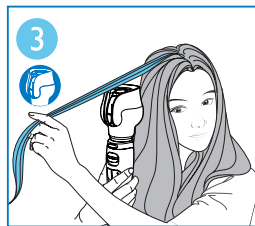
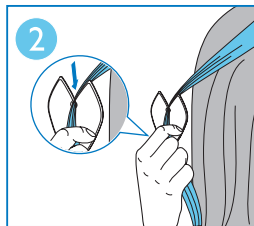
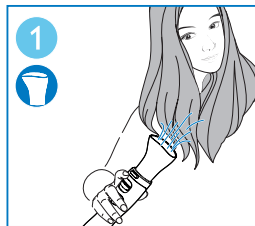


在以下网站注册并获得支持

www.philips.com.cn/welcome

HP8668



English

- 1 Use on clean hair. Pre-dry hair to 80%-90% dry.
- 2 Determine amount of hair by using hair sectioning accessory.
- 3 Use air curl attachment. Hold styler upright.
- 4 Place partial section of hair in the opening and select Hot airflow setting 🔥.

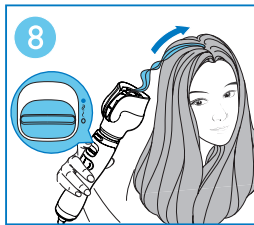
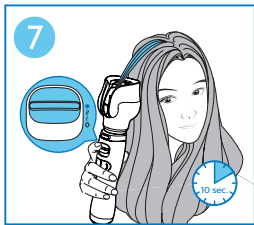
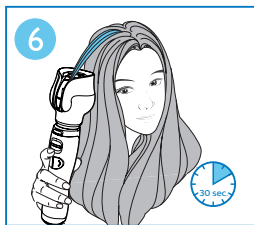
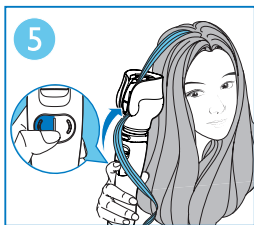
简体中文

- 1 洗净头发。预先将秀发吹干至80%-90%的干燥程度。
- 2 使用头发分撮配件，确定发量。
- 3 使用空气卷发配件。保持美发造型器直立。
- 4 将所选发绺放在空气卷发配件开口内，选择热风设置 🔥。

EN Quick start guide

ZH-CN 快速入门手册

PHILIPS



English

- 5 PRESS and HOLD either of the rotation buttons 10s after the remaining section of hair can no longer be seen.
- 6 Release the rotation button but hold the appliance in place for 30 seconds.
- 7 Switch to cool airflow ● for 10 seconds to fix the style.
- 8 Switch off the appliance and gently pull the hair strand out. Wind each strand of curl around your finger for extra definition.

简体中文

- 5 长按任意旋转按钮。当发缕完全卷入后，仍按住旋转按钮约10 秒钟。
- 6 松开旋转按钮，但保持不动约 30 秒。
- 7 切换到冷风 ●，时间为 10 秒，以便固定发型。
- 8 关闭本产品，然后轻轻拉出发束。用手指缠绕每缕卷发，可增强卷发造型。



© 2015 Koninklijke Philips N.V.
保留所有权利

3140 035 41141

