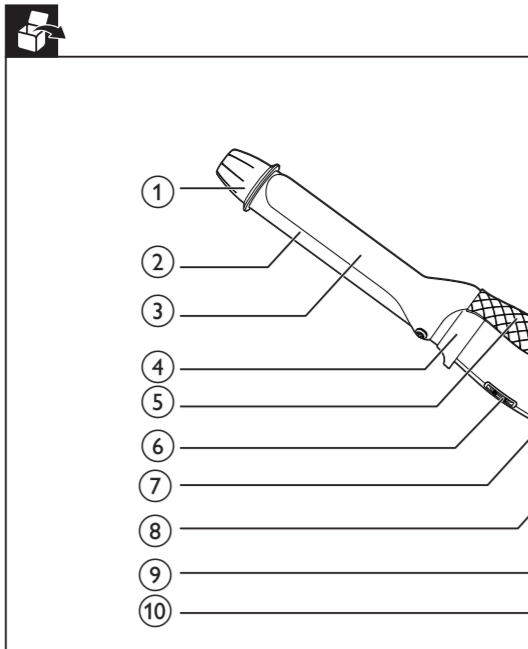


Register your product and get support at www.philips.com/welcome

EN	User manual	LV	Lietuvių rokasgrāmata
BG	Руководство по ползване	PL	Instrukcja obsługi
CS	Průvodce pro uživatele	RO	Manual de utilizare
DE	Bedienungsanleitung	RU	Руководство по пользованию
FR	Korisnički priručnik	SK	Průvodca uživateľa
HU	Felhasználói kézikönyv	SL	Uporabnikovo priručnik
KR	고객지원안내서	SR	Korisnički priručnik
LT	Vartotojų vadovas	UK	Посібник користувача

PHILIPS



- Before you start curling, comb your hair and divide your hair into small sections. Press the lever (3) and place a section of hair between the barrel (5) and clip (6).
- Close the clip (6) by releasing the lever (3) and slide the barrel (5) to the hair top.
- Hold the handle (8) of the curling iron, and then wind the section of hair round the barrel from tip to root by rotating the curler. You can also use the cool tip (9) as a support when you rotate the curler.
- Hold the curling iron in the position for max. 10 seconds.

Note

- Do not pull at the curler when you unwind your hair, otherwise you would straighten the curl.

- Unwind the section of hair until you can open the clip again with the lever.
- Release the curled hair.
 - To curl the rest of your hair repeat steps 3 to 8.
 - You may curl your hair both from inside out or outside in as you like.
- After use
 - Switch off the appliance and unplug it.
 - Place it on the resting stand (1) until it cools down. It is highly recommended to place it on a heat-resistant surface.
 - Remove hairs and dust from the barrel and clip.
 - Clean the barrel and the clip with damp cloth.
 - Keep it in a safe and dry place, free of dust. You can also hang it with the hanging loop (8).

English
<p>Congratulations on your purchase, and welcome to Philips! To fully benefit from the support that Philips offers, register your product at www.philips.com/welcome.</p>

Specifications are subject to change without notice
© 2015 Philips Research N.V.
All rights reserved.
3140 035 4501

English
<p>Congratulations on your purchase, and welcome to Philips! To fully benefit from the support that Philips offers, register your product at www.philips.com/welcome.</p>

1 Introduction
<p>CurvControl features 25mm barrel for natural looking curls, protective ceramic coating for a better caring, and 8 heat settings to suit your hair type. Create curls that are easy to manage, look natural and feel easy without the dryness. We hope you will enjoy using your CurvControl.</p>

2 Important
<p>Read this user manual carefully before you use the appliance and keep it for future reference.</p>

• **WARNING: Do not use this appliance near water.**

• When the appliance is used in a bathroom, unplug it after seeing the proximity of water presents a risk, even when the appliance is switched off.

• **WARNING: Do not use this appliance near bathtubs, showers, basins or other vessels containing water.**

• Always unplug the appliance after use.

• If the mains cord is damaged, you must have it replaced by Philips, a service centre authorised by Philips or similarly qualified persons in order to avoid a hazard.

• This appliance can be used by children aged from 8 years and above and persons with reduced physical, sensory or mental capabilities or lack of experience and knowledge if they have been given supervision or instruction concerning use of the appliance in a safe way and understand the hazards involved. Children shall not play with the appliance. Cleaning and user maintenance shall not be made by children without supervision.

• Before you connect the appliance, ensure that the voltage indicated on the appliance corresponds to the local power voltage.

• Do not use the appliance for any other purpose than described in this manual.

• When the appliance is connected to the power, never leave it unattended.

• Never use any accessories or parts from other manufacturers or that Philips does not specifically recommend. If you use such accessories or parts, your guarantee becomes invalid.

• Do not wind the mains cord round the appliance.

• Wait until the appliance has cooled down before you store it.

• Pay full attention when using the appliance since it could be extremely hot. Only hold the handle as other parts are hot and avoid contact with the skin.

• Always place the appliance with the stand on a heat-resistant, stable flat surface. The hot barrel should never touch the surface or other flammable material.

• Avoid the mains cord from coming into contact with the hot parts of the appliance.

• Keep the appliance away from flammable objects and material when it is switched on.

• Never cover the appliance with anything (e.g. a towel or clothing) when it is hot.

• Only use the appliance on dry hair. Do not operate the appliance with wet hands.

• Keep the barrel clean and free of dust and styling products such as mousse, spray and gel. Never use the appliance in combination with styling products.

• The barrel has Keratin ceramic coating. This coating might slowly wear away over time. However, this does not affect the performance of the appliance.

• If the appliance is used on colour-treated hair, the barrel may be stained. Before using it on artificial hair, always consult your distributor.

• Always return the appliance to a service centre authorized by Philips for examination or repair. Repair by unqualified people could result in an extremely hazardous situation for the user.

• Do not insert metal objects into openings to avoid electric shock.

• Do not pull on the power cord after using. Always unplug the appliance by holding the plug.

Electromagnetic fields (EMF)

This Philips appliance complies with all applicable standards and regulations regarding exposure to electromagnetic fields.

Environment

Symbol on a product means that the product is covered by an agreement pursuant to 2012/19/EU (yourself about the local e-waste collection system for electrical and electronic products) for take back and re-use/repair of the product with normal household waste. Correct disposal of old products helps prevent negative consequences for the environment and human health.

3 Curl your hair

Ensure that you select a temperature setting that is suitable for your hair. Always select a low setting when you curl for the first time.

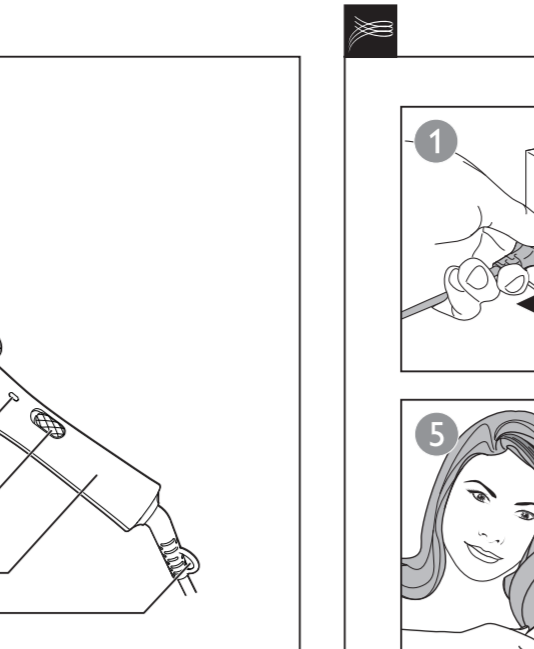
Hair type	Temperature Setting
Coarse, curly, hard-to-curl	Mid to High (setting 4-8)
Fine, medium-textured or softly textured	Low to Mid (setting 1-5)
Fine,blends,thatched or colour-treated	Low (setting 1-3)

1 Connect the power cord to a power supply socket.

2 Slide the on/off switch (8) to 1 to switch on the appliance.

3 Turn the nearest wheel (9) to select your desired temperature setting as recommended in the table above.

4 When the appliance is ready for use, the indicator (3) stops blinking.



• Za provjerka ili remont nosete uređea samo u uplyanoženom ot Philips servisa. Remont, izvayrenje ot nekvalficiranih lica, moke da svađaae izmlyuoteno opasni situacii za potrobieatya.

• Za da izbegete toga uođar, ne pħayite metalni predmeti u otvorite.

• Ne dħayitee zaxranayia kabel sled ispolzovane. Vnigiti izmlyuoteya uređea ot kontakta, koto dħayitee shepsela.

• Ne dħayitee zaxranayia kabel sled ispolzovane. Vnigiti izmlyuoteya uređea ot kontakta, koto dħayitee shepsela.

• Ne dħayitee zaxranayia kabel sled ispolzovane. Vnigiti izmlyuoteya uređea ot kontakta, koto dħayitee shepsela.

• Ne dħayitee zaxranayia kabel sled ispolzovane. Vnigiti izmlyuoteya uređea ot kontakta, koto dħayitee shepsela.

• Ne dħayitee zaxranayia kabel sled ispolzovane. Vnigiti izmlyuoteya uređea ot kontakta, koto dħayitee shepsela.

• Ne dħayitee zaxranayia kabel sled ispolzovane. Vnigiti izmlyuoteya uređea ot kontakta, koto dħayitee shepsela.

• Ne dħayitee zaxranayia kabel sled ispolzovane. Vnigiti izmlyuoteya uređea ot kontakta, koto dħayitee shepsela.

• Ne dħayitee zaxranayia kabel sled ispolzovane. Vnigiti izmlyuoteya uređea ot kontakta, koto dħayitee shepsela.

• Ne dħayitee zaxranayia kabel sled ispolzovane. Vnigiti izmlyuoteya uređea ot kontakta, koto dħayitee shepsela.

• Ne dħayitee zaxranayia kabel sled ispolzovane. Vnigiti izmlyuoteya uređea ot kontakta, koto dħayitee shepsela.

• Ne dħayitee zaxranayia kabel sled ispolzovane. Vnigiti izmlyuoteya uređea ot kontakta, koto dħayitee shepsela.

• Ne dħayitee zaxranayia kabel sled ispolzovane. Vnigiti izmlyuoteya uređea ot kontakta, koto dħayitee shepsela.

• Ne dħayitee zaxranayia kabel sled ispolzovane. Vnigiti izmlyuoteya uređea ot kontakta, koto dħayitee shepsela.

• Ne dħayitee zaxranayia kabel sled ispolzovane. Vnigiti izmlyuoteya uređea ot kontakta, koto dħayitee shepsela.

• Ne dħayitee zaxranayia kabel sled ispolzovane. Vnigiti izmlyuoteya uređea ot kontakta, koto dħayitee shepsela.

• Ne dħayitee zaxranayia kabel sled ispolzovane. Vnigiti izmlyuoteya uređea ot kontakta, koto dħayitee shepsela.

• Ne dħayitee zaxranayia kabel sled ispolzovane. Vnigiti izmlyuoteya uređea ot kontakta, koto dħayitee shepsela.

• Ne dħayitee zaxranayia kabel sled ispolzovane. Vnigiti izmlyuoteya uređea ot kontakta, koto dħayitee shepsela.

• Ne dħayitee zaxranayia kabel sled ispolzovane. Vnigiti izmlyuoteya uređea ot kontakta, koto dħayitee shepsela.

• Ne dħayitee zaxranayia kabel sled ispolzovane. Vnigiti izmlyuoteya uređea ot kontakta, koto dħayitee shepsela.

• Ne dħayitee zaxranayia kabel sled ispolzovane. Vnigiti izmlyuoteya uređea ot kontakta, koto dħayitee shepsela.

• Ne dħayitee zaxranayia kabel sled ispolzovane. Vnigiti izmlyuoteya uređea ot kontakta, koto dħayitee shepsela.

• Ne dħayitee zaxranayia kabel sled ispolzovane. Vnigiti izmlyuoteya uređea ot kontakta, koto dħayitee shepsela.

• Ne dħayitee zaxranayia kabel sled ispolzovane. Vnigiti izmlyuoteya uređea ot kontakta, koto dħayitee shepsela.

• Ne dħayitee zaxranayia kabel sled ispolzovane. Vnigiti izmlyuoteya uređea ot kontakta, koto dħayitee shepsela.

• Ne dħayitee zaxranayia kabel sled ispolzovane. Vnigiti izmlyuoteya uređea ot kontakta, koto dħayitee shepsela.

• Ne dħayitee zaxranayia kabel sled ispolzovane. Vnigiti izmlyuoteya uređea ot kontakta, koto dħayitee shepsela.

• Ne dħayitee zaxranayia kabel sled ispolzovane. Vnigiti izmlyuoteya uređea ot kontakta, koto dħayitee shepsela.

• Ne dħayitee zaxranayia kabel sled ispolzovane. Vnigiti izmlyuoteya uređea ot kontakta, koto dħayitee shepsela.

• Ne dħayitee zaxranayia kabel sled ispolzovane. Vnigiti izmlyuoteya uređea ot kontakta, koto dħayitee shepsela.

• Ne dħayitee zaxranayia kabel sled ispolzovane. Vnigiti izmlyuoteya uređea ot kontakta, koto dħayitee shepsela.

• Ne dħayitee zaxranayia kabel sled ispolzovane. Vnigiti izmlyuoteya uređea ot kontakta, koto dħayitee shepsela.

• Ne dħayitee zaxranayia kabel sled ispolzovane. Vnigiti izmlyuoteya uređea ot kontakta, koto dħayitee shepsela.

• Ne dħayitee zaxranayia kabel sled ispolzovane. Vnigiti izmlyuoteya uređea ot kontakta, koto dħayitee shepsela.

• Ne dħayitee zaxranayia kabel sled ispolzovane. Vnigiti izmlyuoteya uređea ot kontakta, koto dħayitee shepsela.

• Ne dħayitee zaxranayia kabel sled ispolzovane. Vnigiti izmlyuoteya uređea ot kontakta, koto dħayitee shepsela.

• Ne dħayitee zaxranayia kabel sled ispolzovane. Vnigiti izmlyuoteya uređea ot kontakta, koto dħayitee shepsela.

• Ne dħayitee zaxranayia kabel sled ispolzovane. Vnigiti izmlyuoteya uređea ot kontakta, koto dħayitee shepsela.

• Ne dħayitee zaxranayia kabel sled ispolzovane. Vnigiti izmlyuoteya uređea ot kontakta, koto dħayitee shepsela.

• Ne dħayitee zaxranayia kabel sled ispolzovane. Vnigiti izmlyuoteya uređea ot kontakta, koto dħayitee shepsela.

• Ne dħayitee zaxranayia kabel sled ispolzovane. Vnigiti izmlyuoteya uređea ot kontakta, koto dħayitee shepsela.

• Ne dħayitee zaxranayia kabel sled ispolzovane. Vnigiti izmlyuoteya uređea ot kontakta, koto dħayitee shepsela.

• Ne dħayitee zaxranayia kabel sled ispolzovane. Vnigiti izmlyuoteya uređea ot kontakta, koto dħayitee shepsela.

• Ne dħayitee zaxranayia kabel sled ispolzovane. Vnigiti izmlyuoteya uređea ot kontakta, koto dħayitee shepsela.

• Ne dħayitee zaxranayia kabel sled ispolzovane. Vnigiti izmlyuoteya uređea ot kontakta, koto dħayitee shepsela.

• Ne dħayitee zaxranayia kabel sled ispolzovane. Vnigiti izmlyuoteya uređea ot kontakta, koto dħayitee shepsela.

• Ne dħayitee zaxranayia kabel sled ispolzovane. Vnigiti izmlyuoteya uređea ot kontakta, koto dħayitee shepsela.

• Ne dħayitee zaxranayia kabel sled ispolzovane. Vnigiti izmlyuoteya uređea ot kontakta, koto dħayitee shepsela.

• Ne dħayitee zaxranayia kabel sled ispolzovane. Vnigiti izmlyuoteya uređea ot kontakta, koto dħayitee shepsela.

• Ne dħayitee zaxranayia kabel sled ispolzovane. Vnigiti izmlyuoteya uređea ot kontakta, koto dħayitee shepsela.

• Ne dħayitee zaxranayia kabel sled ispolzovane. Vnigiti izmlyuoteya uređea ot kontakta, koto dħayitee shepsela.

• Ne dħayitee zaxranayia kabel sled ispolzovane. Vnigiti izmlyuoteya uređea ot kontakta, koto dħayitee shepsela.

• Ne dħayitee zaxranayia kabel sled ispolzovane. Vnigiti izmlyuoteya uređea ot kontakta, koto dħayitee shepsela.

• Ne dħayitee zaxranayia kabel sled ispolzovane. Vnigiti izmlyuoteya uređea ot kontakta, koto dħayitee shepsela.

• Ne dħayitee zaxranayia kabel sled ispolzovane. Vnigiti izmlyuoteya uređea ot kontakta, koto dħayitee shepsela.

• Ne dħayitee zaxranayia kabel sled ispolzovane. Vnigiti izmlyuoteya uređea ot kontakta, koto dħayitee shepsela.

• Ne dħayitee zaxranayia kabel sled ispolzovane. Vnigiti izmlyuoteya uređea ot kontakta, koto dħayitee shepsela.

• Ne dħayitee zaxranayia kabel sled ispolzovane. Vnigiti izmlyuoteya uređea ot kontakta, koto dħayitee shepsela.

• Ne dħayitee zaxranayia kabel sled ispolzovane. Vnigiti izmlyuoteya uređea ot kontakta, koto dħayitee shepsela.

• Ne dħayitee zaxranayia kabel sled ispolzovane. Vnigiti izmlyuoteya uređea ot kontakta, koto dħayitee shepsela.

• Ne dħayitee zaxranayia kabel sled ispolzovane. Vnigiti izmlyuoteya uređea ot kontakta, koto dħayitee shepsela.

• Ne dħayitee zaxranayia kabel sled ispolzovane. Vnigiti izmlyuoteya uređea ot kontakta, koto dħayitee shepsela.

• Ne dħayitee zaxranayia kabel sled ispolzovane. Vnigiti izmlyuoteya uređea ot kontakta, koto dħayitee shepsela.

• Ne dħayitee zaxranayia kabel sled ispolzovane. Vnigiti izmlyuoteya uređea ot kontakta, koto dħayitee shepsela.

• Ne dħayitee zaxranayia kabel sled ispolzovane. Vnigiti izmlyuoteya uređea ot kontakta, koto dħayitee shepsela.

• Ne dħayitee zaxranayia kabel sled ispolzovane. Vnigiti izmlyuoteya uređea ot kontakta, koto dħayitee shepsela.

• Ne dħayitee zaxranayia kabel sled ispolzovane. Vnigiti izmlyuoteya uređea ot kontakta, koto dħayitee shepsela.

• Ne dħayitee zaxranayia kabel sled ispolzovane. Vnigiti izmlyuoteya uređea ot kontakta, koto dħayitee shepsela.

• Ne dħayitee zaxranayia kabel sled ispolzovane. Vnigiti izmlyuoteya uređea ot kontakta, koto dħayitee shepsela.

• Ne dħayitee zaxranayia kabel sled ispolzovane. Vnigiti izmlyuoteya uređea ot kontakta, koto dħayitee shepsela.

• Ne dħayitee zaxranayia kabel sled ispolzovane. Vnigiti izmlyuoteya uređea ot kontakta, koto dħayitee shepsela.

• Ne dħayitee zaxranayia kabel sled ispolzovane. Vnigiti izmlyuoteya uređea ot kontakta, koto dħayitee shepsela.

• Ne dħayitee zaxranayia kabel sled ispolzovane. Vnigiti izmlyuoteya uređea ot kontakta, koto dħayitee shepsela.

• Ne dħayitee zaxranayia kabel sled ispolzovane. Vnigiti izmlyuoteya uređea ot kontakta, koto dħayitee shepsela.

• Ne dħayitee zaxranayia kabel sled ispolzovane. Vnigiti izmlyuoteya uređea ot kontakta, koto dħayitee shepsela.

• Ne dħayitee zaxranayia kabel sled ispolzovane. Vnigiti izmlyuoteya uređea ot kontakta, koto dħayitee shepsela.

• Ne dħayitee zaxranayia kabel sled ispolzovane. Vnigiti izmlyuoteya uređea ot kontakta, koto dħayitee shepsela.

• Ne dħayitee zaxranayia kabel sled ispolzovane. Vnigiti izmlyuoteya uređea ot kontakta, koto dħayitee shepsela.

• Ne dħayitee zaxranayia kabel sled ispolzovane. Vnigiti izmlyuoteya uređea ot kontakta, koto dħayitee shepsela.

• Ne dħayitee zaxranayia kabel sled ispolzovane. Vnigiti izmlyuoteya uređea ot kontakta, koto dħayitee shepsela.

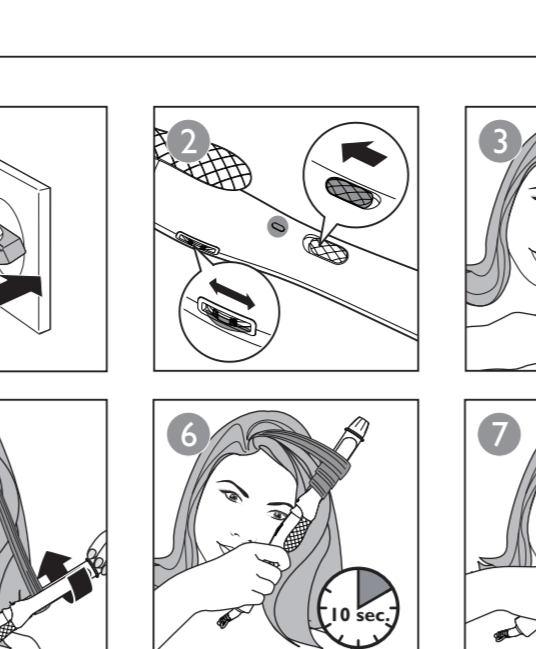
• Ne dħayitee zaxranayia kabel sled ispolzovane. Vnigiti izmlyuoteya uređea ot kontakta, koto dħayitee shepsela.

• Ne dħayitee zaxranayia kabel sled ispolzovane. Vnigiti izmlyuoteya uređea ot kontakta, koto dħayitee shepsela.

• Ne dħayitee zaxranayia kabel sled ispolzovane. Vnigiti izmlyuoteya uređea ot kontakta, koto dħayitee shepsela.

• Ne dħayitee zaxranayia kabel sled ispolzovane. Vnigiti izmlyuoteya uređea ot kontakta, koto dħayitee shepsela.

• Ne dħayitee zaxranayia kabel sled ispolzovane. Vnigiti izmlyuoteya uređea ot kontakta, koto dħayitee shepsela.



• Ąrge kasutage seadet muuks, kui selles kasutusjuhendis kirjeldatud otstarbeks.

• Ąrge jätke kunagi elektrivoolu ühendatud seadet järelevalveta.

• Ąrge kunagi kasutage teiste ootiste, mida Philips ei ole eriliselt soovitanud.

• Seliste tarvikute või osade kasutamisel kaotab garantii kehtivsuse.

• Ąrge kerige toitejuhtet ümber seadme.

• Enne hoiukohta panekut laske seadmel täielikult maha jahtuda.

• Olge seadme kasutamisel väga tähelepanelik, kuna see võib olla äärmiselt kuum. Hoidke kindi üksnes käepidemed, kuna teised osad on kuuma!

• Vältige kasutamist teiste nahaga.

• Asetage seade koos alusega kiudule kuumakindlale stabiilele tasasele pinnale. Kuum rullik ei too kunagi pinna ega muude toolehitlike materjalidega kokku puutuda.

• Ąrge laske toitejuhtmel vastu seadme kuumi osi minna.

• Hoidke sisselülitatud seadet kergeti süttivatest objektidest ja materjalidest kaugemal.

• Kunagi ärge katke kuuma seadet niisketega kindi (nt käterätivi) niisketega!

• Rakendage seadet ainult kuivadele juustele. Ąrge kasutage seadet märgade kättega.

• Hoidke rulle puhtana ning ärge laske seadmele niisketega puudutada, mis võib kahjustada juuksehooldusvahendite ja juuksevahude, piserdusvahendite ja geeli jalgide koguneda.

