

Register your product and get support at
www.philips.com/welcome

S360, S330, S331, S321,
S311, S301, S300

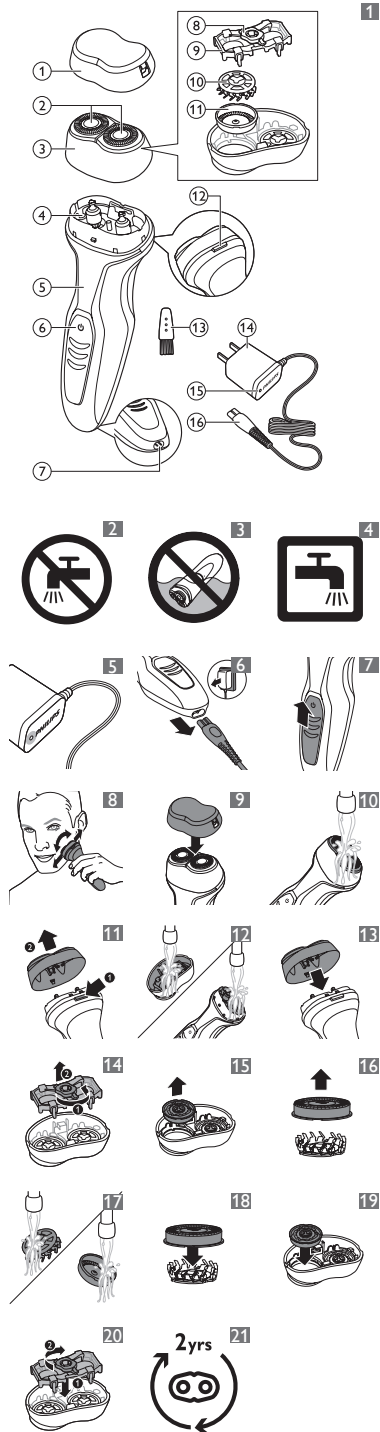


PHILIPS

www.philips.com

100% recycled paper
100% papier recyclé
100% 循环再造纸

4222.002.5675.1



ENGLISH

Introduction

Congratulations on your purchase and welcome to Philips! To fully benefit from the support that Philips offers, register your product at www.philips.com/welcome.

General description (Fig. 1)

- 1 Protection cap
- 2 Shaving heads
- 3 Shaving unit
- 4 Hair chamber
- 5 Handle
- 6 On/off slide
- 7 Socket for small plug
- 8 Wheel for retaining frame
- 9 Retaining frame
- 10 Cutter
- 11 Guard
- 12 Release button
- 13 Cleaning brush
- 14 Adapter
- 15 Charging light
- 16 Small plug

Important

Read this important information carefully before you use the appliance and save it for future reference.

Danger

- Keep the adapter dry (Fig. 2).

Warning

- The adapter contains a transformer. Do not cut off the adapter to replace it with another plug, as this causes a hazardous situation.
- This appliance is not intended for use by persons (including children) with reduced physical, sensory or mental capabilities, or lack of experience and knowledge, unless they have been given supervision or instruction concerning use of the appliance by a person responsible for their safety.
- Children should be supervised to ensure that they do not play with the appliance.
- Always unplug the appliance before you clean it under the tap.

Caution

- Never immerse the appliance in water (Fig. 3).

- Do not use the appliance in the bath or in the shower.
- Never use water hotter than 60°C to rinse the shaver.
- Do not use the appliance, adapter or any other part if it is damaged, as this may cause injury. Always replace a damaged adapter or part with one of the original type.
- Never use compressed air; scouring pads, abrasive cleaning agents or aggressive liquids such as petrol or acetone to clean the appliance.
- Water may drip from the socket at the bottom of the shaver when you rinse it. This is normal and not dangerous because all electronics are enclosed in a sealed power unit inside the shaver.
- Use and store the appliance at a temperature between 5°C and 35°C.

Compliance with standards

- The appliance complies with the internationally approved IEC safety regulations and can be safely cleaned under the tap (Fig. 4).
- This Philips appliance complies with all applicable standards and regulations regarding exposure to electromagnetic fields.

General

- The adapter is equipped with an automatic voltage selector and is suitable for mains voltages ranging from 100 to 240 volts.
- The adapter transforms 100-240 volts to a safe low voltage of less than 24 volts.

Charging

Make sure the shaver is switched off when you start to charge it.

When you charge the shaver for the first time or after a long period of non-use, let it charge continuously for 12 hours. Charging normally takes 10 hours.

Charge the appliance when the motor stops or starts running slower. For optimal performance, only charge the shaver when the battery is low.

Do not leave the appliance connected to the mains for more than 24 hours.

- 1 Put the adapter in the wall socket.
 - ▶ The charging light goes on to indicate that the appliance is charging (Fig. 5).

Note: Charge the shaver for at least 8 hours but not more than 24 hours.

- 2 Remove the adapter from the wall socket and pull the plug out of the shaver when the battery is fully charged (Fig. 6).

Note: The shaver does not run from the mains. When the battery is empty, you have to recharge the battery before you can use the shaver again.

Cordless shaving time

A fully charged shaver has a cordless shaving time of approximately 45 (S360), 30 (S331, S330, S321) or 20 (S311, S301, S300) minutes.

Using the appliance

Your first shaves may not bring you the result you expect and your skin may even become slightly irritated. This is normal. Your skin and beard need time to adapt to any new shaving system. We advise you to shave regularly (at least 3 times a week) with this shaver for a period of 3 weeks to allow your skin to adapt to the new shaver.

Shaving

Note: The shaver cannot be used directly from the mains.

- 1 Remove the protection cap.
- 2 Push the on/off slide upwards to switch on the shaver (Fig. 7).
- 3 Move the shaving heads over your skin. Make both straight and circular movements (Fig. 8).

Note: Do not use the shaver in combination with gel or foam.

Note: Your skin may need 2 or 3 weeks to get accustomed to the Philips shaving system.

- 4 Push the on/off slide downwards to switch off the shaver.
- 5 Clean the shaver after every shave (see chapter 'Cleaning and maintenance').
- 6 Put the protection cap on the shaver to prevent damage and dirt accumulation in the shaving heads (Fig. 9).

Note: Make sure that the lug of the protection cap covers the release button.

Cleaning and maintenance

Never use scouring pads, abrasive cleaning agents or aggressive liquids such as petrol or acetone to clean the appliance.

Clean the shaver after every shave to guarantee better shaving performance. For the best cleaning result, we advise you to use Philips Cleaning Spray (HQ110). Ask your Philips dealer for information.

Note: Philips Shaving Head Cleaning Spray (HQ110) may not be available in all countries. Contact the Consumer Care Centre in your country about the availability of this accessory.

After every shave: cleaning the shaver

1 Switch off the shaver, remove the adapter from the wall socket and pull the plug out of the shaver.

2 Rinse the shaver under a warm tap for some time. (Fig. 10)

Note: For additional cleaning you can also start by using the cleaning brush to remove hairs.

3 Press the release button (1) and pull the shaving unit in a straight upward movement off the shaver (2). (Fig. 11)

4 Rinse the shaving unit and hair chamber under a warm tap. (Fig. 12)

Note: For additional cleaning you can also start by using the cleaning brush to remove hairs.

5 Carefully shake off excess water and let the shaving unit and hair chamber dry.

6 Put the shaving unit back onto the shaver (Fig. 13).

Every two months: cleaning the shaving heads

Note: Do not use cleaning agents or alcohol to clean the shaving heads. Only use Philips Cleaning Spray (HQ110).

1 Switch off the shaver, remove the adapter from the wall socket and pull the small plug out of the shaver.

2 Press the release button (1) and pull the shaving unit in a straight upward movement off the shaver (2) (Fig. 11).

3 Turn the orange wheel anticlockwise (1) and remove the retaining frame (2) (Fig. 14).

4 Remove and clean one shaving head at a time. Each shaving head consists of a cutter and a guard (Fig. 15).

Note: Do not clean more than one cutter and guard at a time, since they are all matching sets. If you accidentally mix up the cutters and guards, it may take several weeks before optimal shaving performance is restored.

5 Remove the guard from the cutter (Fig. 16).

6 Clean the cutter and guard under the tap (Fig. 17).

Note: For additional cleaning you can also start by using the cleaning brush to remove hairs.

7 After cleaning, place the cutter back into the guard. (Fig. 18)

8 Put the shaving heads back into the shaving unit. (Fig. 19)

9 Put the retaining frame back into the shaving unit (1) and turn the orange wheel clockwise (2) (Fig. 20).

10 Put the shaving unit back onto the shaver (Fig. 13).

Storage

Keep the appliance dry. Store the appliance in a safe, dry place.

1 Switch off the shaver.

2 Put the protection cap on the shaver after use to prevent damage and dirt accumulation in the shaving heads (Fig. 9).

Note: Make sure that the lug of the protection cap covers the release button.

Replacement

Replace the shaving heads every two years for optimal shaving results. Replace damaged or worn shaving heads with Philips shaving heads only. For instructions on how to remove the shaving heads, see chapter 'Cleaning and maintenance', section 'Every two months: shaving heads'.

Ordering accessories

To buy accessories or spare parts, visit www.shop.philips.com/service or go to your Philips dealer. You can also contact the Philips Consumer Care Centre in your country (see the worldwide guarantee leaflet for contact details). To retain the top performance of your shaver, make sure you clean it regularly and replace its shaving heads at the recommended time.

Shaving heads

- We advise you to replace your shaving heads every two years. Always replace them with Philips shaving heads only (Fig. 21).

Cleaning

- Use Philips Cleaning Spray (HQ110) to clean the shaving heads thoroughly.

Recycling

Do not throw away the appliance with the normal household waste at the end of its life, but hand it in at an official collection point for recycling. By doing this, you help to preserve the environment.

Guarantee and support

If you need information or support, please visit www.philips.com/support or read the separate worldwide guarantee leaflet.

Guarantee restrictions

The shaving heads (cutters and guards) are not covered by the terms of the international guarantee because they are subject to wear.

Troubleshooting

This chapter summarises the most common problems you could encounter with the appliance. If you are unable to solve the problem with the information below, visit www.philips.com/support for a list of frequently asked questions or contact the Consumer Care Centre in your country.

Problem	Possible cause	Solution
The shaver does not shave as well as it used to.	The shaving heads are dirty. You have not cleaned the shaver well enough or you have not cleaned it for a long time.	Clean the shaving heads thoroughly before you continue shaving. See chapter 'Cleaning and maintenance'.
	Long hairs obstruct the shaving heads.	Clean the cutters and guards with the cleaning brush supplied. See chapter 'Cleaning and maintenance', section 'Every two months: shaving heads'.

You mixed up the cutters and guards when you placed them back into the retaining frame after cleaning.	Put each cutter in the other guard. If you do not switch the cutters, it may take 2 to 3 weeks until optimal shaving performance is restored.
--	---

Problem	Possible cause	Solution
	The shaving heads are damaged or worn.	Replace the shaving heads. See chapter 'Replacement'.
The shaver does not work when I push the on/off slide upwards.	The rechargeable battery is empty.	Recharge the battery. See chapter 'Charging'.
My skin is irritated after shaving.	Your skin needs time to get used to the Philips shaving system.	Skin irritation during the first 2-3 weeks of use is possible. After this period, the skin irritation usually disappears.
The rotation speed of the shaving heads is slower than usual.	Too much dirt has collected in the shaving heads.	Clean the shaving heads. See chapter 'Cleaning and maintenance'.
	The rechargeable battery is low.	Recharge the battery. See chapter 'Charging'.

Problem	Possible cause	Solution
The appliance makes a strange noise.	Too much dirt has collected in the shaving heads.	Clean the shaving heads. After cleaning, lubricate the central point on the inside of the guards with Philips Cleaning Spray (HQ110). See chapter 'Cleaning and maintenance'.
	The shaving heads are damaged or worn.	Replace the shaving heads. See chapter 'Replacement'.

I connected the appliance to the mains, but I was not able to (finish my) shave.	The rechargeable battery is empty.	The shaver does not run from the mains. When the battery is empty, you have to recharge the battery and then unplug the shaver before you can use the shaver again.
--	------------------------------------	---

Problem	Possible cause	Solution
I connected the appliance to the mains, but I was not able to (finish my) shave.	The rechargeable battery is empty.	The shaver does not run from the mains. When the battery is empty, you have to recharge the battery and then unplug the shaver before you can use the shaver again.

	The shaver does not run when it is connected to the mains.	Disconnect the shaver from the mains and pull the small plug out of the shaver.
--	--	---

繁體中文

簡介

恭喜您購買本產品並歡迎加入飛利浦！請於 www.philips.com/welcome 註冊您的產品，以善用飛利浦提供的支援。

一般說明 (圖 1)

- 保護蓋
- 電鬚刀刀頭
- 除毛刀組
- 鬚渣室
- 握柄
- On/Off 滑動開關
- 小插頭插座
- 固定架轉盤
- 固定架
- 刀具
- 刀網
- 釋放鈕
- 清潔刷
- 轉換器
- 充電指示燈
- 小插頭

重要事項

使用本產品前，請先仔細閱讀此重要資訊，並保留說明以供日後參考。

危險

- 請保持轉換器乾燥。(圖 2)

警告

- 轉換器內含一個變壓器。請勿切斷轉換器而以其他插頭取代，否則會造成危險。
- 本產品不適合供下列人士 (包括兒童) 使用：身體官能或心智能力退化者，或是經驗與使用知識缺乏者。他們需要有負責其安全的人員在旁監督，或指示產品的使用方法，方可使用。
- 請勿讓孩童使用本產品或將本產品當成玩具。
- 在水龍頭下沖洗本產品之前，請先拔掉產品電源插頭。

警告

- 切勿將本產品浸泡於水中。(圖 3)
- 請勿在泡澡或淋浴時使用本產品。
- 切勿使用超過 60° C 的熱水沖洗電鬚刀。
- 如有損壞情況，請勿繼續使用該產品、轉換器或任何其他零件，否則可能導致受傷。轉換器或零件如有受損，請務必以原型號更換之。
- 絕對不可使用壓縮空氣、鋼絲絨、磨蝕性的清潔劑或侵蝕性的液體 (例如汽油或丙酮) 清潔本產品。
- 在您沖洗時，水可能會從電鬚刀底部的插孔滴落。此為正常現象，不會造成危險，因為所有的電子零件都密封於電鬚刀內的電源裝置中。
- 請於 5° C 到 35° C 間使用並存放本產品。

符合標準

- 本產品符合國際公認的 IEC 安全規範，可以直接在水龍頭之下以自來水安全清洗。(圖 4)
- 本飛利浦產品符合所有電磁波暴露的相關適用標準和法規。

一般

- 本轉換器配備有自動電壓選擇器，適用 100 到 240 伏特的插座電壓。
- 轉換器可將 100-240 伏特的電壓轉換為低於 24 伏特的安全低電壓。

充電

開始充電之前，務必將電鬚刀的電源關閉。
當您第一次為電鬚刀充電，或長時間未使用時，請連續充電 12 小時。一般充電時間通常需 10 小時。
請在馬達停止轉動時或者運轉速度開始變慢時，為產品充電。
為保持最佳效能，只有在電力不足時才為電鬚刀充電。

請勿讓產品連續連接電源插座超過

24 小時。

- 將轉換器插入插座。

- 充電指示燈亮起，表示產品正在進行充電。(圖 5)

注意：請將電鬚刀充電至少滿 8 小時，但切勿超過 24 個小時。

- 電池完全充滿後，將變壓器從電源插座拔除，並將電源線自電鬚刀上拔下。(圖 6)

注意：電鬚刀無法插電運轉。電池耗盡時，您必須先讓電池充電，才能再度使用電鬚刀。

無線刮鬚時間

充飽電的電鬚刀可在不插電的狀態下持續刮鬚約 45 (S360)、30 (S331、S330、S321) 或 20 (S311、S301、S300) 分鐘。

使用本產品

您初次刮鬚的結果可能不如您所預期，皮膚甚至可能稍感刺痛。這是正常現象。您的皮膚與鬚鬚需要一段時間才能適應新的刮鬚系統。建議您用這把電鬚刀定期刮鬚 (每週至少3次) 3 週，讓肌膚適應新的電鬚刀。

刮鬚

注意：電鬚刀無法直接插電使用。

- 卸下保護蓋。

- 將 On/Off 滑動開關往上推，即可開啟電鬚刀電源。(圖 7)

- 將電鬚刀刀頭在皮膚上移動，請同時用直線及畫圓的方式來移動。(圖 8)

注意：使用電鬚刀時，請勿同時搭配凝膠或泡沫。

注意：您的皮膚可能需要 2 到 3 週的時間才能完全適應飛利浦電鬚刀系統。

- 將 On/Off 滑動開關往下推，即可關閉電鬚刀電源。

- 每次刮鬚後，請清潔本電鬚刀 (請參閱「清潔與維護」單元)。

- 為電鬚刀蓋上保護蓋以防損壞，並避免污垢累積在電鬚刀刀頭中。(圖 9)

注意：請確實將保護蓋的突耳蓋住釋放鈕。

清潔與維護

絕對不可使用鋼絲絨、磨蝕性的清潔劑或侵蝕性的液體 (例如汽油或丙酮) 清潔本產品。

在每次刮鬚之後清潔電鬚刀，以保障更好的刮鬚效果。為達最好的清潔效果，建議您使用飛利浦噴霧清潔劑 (HQ110)。請向您的飛利浦經銷商查詢相關資訊。

注意：飛利浦電鬚刀刀頭噴霧清潔劑 (HQ110) 並非所有國家/地區都有供應。關於是否有這項配件供應，請與您所在國家/地區的客戶服務中心聯繫。

每次刮鬚後：清潔電鬚刀

- 關閉電鬚刀電源，將變壓器從電源插座拔除，並將電源線自電鬚刀上拔下。

- 將電鬚刀以溫水沖洗一段時間。(圖 10)

注意：如要進行額外的清潔，您可先從使用清潔刷清除鬚渣開始。

- 按下釋放鈕 (1) 並將電鬚刀組垂直向上拉起，自電鬚刀上取下 (2)。(圖 11)

- 在水龍頭下以溫水沖洗電鬚刀組與鬚渣室。(圖 12)

注意：如要進行額外的清潔，您可先從使用清潔刷清除鬚渣開始。

- 仔細用乾多餘的水份之後，讓電鬚刀組與鬚渣室乾燥。

- 將電鬚刀組裝回電鬚刀上。(圖 13)

每兩個月：清潔電鬚刀刀頭

注意：請勿使用清潔劑或酒精清潔電鬚刀刀頭，務必使用飛利浦噴霧清潔劑 (HQ110)。

- 1 關閉電鬚刀電源，將轉換器從電源插座拔下，並將小插頭自電鬚刀上拔下。
- 2 按下釋放鈕 (1) 並將電鬚刀組垂直向上拉起，自電鬚刀上取下 (2)。(圖 11)
- 3 逆時針方向轉動橘色轉盤 (1)，將固定架拆下 (2)。(圖 14)
- 4 一次取下並清洗一個刀頭。每個電鬚刀刀頭都是由刀具和刀網組成。(圖 15)

注意：因為刀具及刀網是成對的一組，請勿一次清潔超過一組。如果您不小心將刀具及刀網混在一起，可能要花幾週的時間才能恢復最理想的刮鬚效果。

- 5 取下刀具的刀網。(圖 16)
- 6 將刀片及刀網放在水龍頭下清洗。(圖 17)

注意：如要進行額外的清潔，您可先從使用清潔刷清除鬚渣開始。

- 7 清洗後，請將刀片放回刀網中。(圖 18)
- 8 將電鬚刀刀頭裝回電鬚刀組。(圖 19)
- 9 將固定架裝回電鬚刀組 (1)，並以順時針方向轉動橘色轉盤 (2)。(圖 20)
- 10 將電鬚刀組裝回電鬚刀上。(圖 13)

收納

請保持本產品乾燥。
請將本產品放置在安全、乾燥的地方。

- 1 請關閉電鬚刀電源。
- 2 使用後請為電鬚刀蓋上保護蓋以防損壞，並避免污垢累積在電鬚刀刀頭中。(圖 9)

注意：請確實將保護蓋的突耳蓋住釋放鈕。

更換

每隔兩年更換一次電鬚刀刀頭，以確保維持最佳的刮鬚效果。
損壞或用舊的刀頭限以飛利浦電鬚刀刀頭替換。
有關如何取下電鬚刀刀頭的說明，請參閱「清潔與維護」單元之「每兩個月：電鬚刀刀頭」一節。

訂購配件

若要購買配件或備用零件，請造訪 www.shop.philips.com/service，或洽詢您的飛利浦經銷商。您也可以聯絡您所在國家/地區的飛利浦客戶服務中心 (聯絡詳細資料請參閱全球保證書)。
若要維持電鬚刀的最佳效能，請務必定期清潔電鬚刀，並於建議的時間更換電鬚刀刀頭。

- 電鬚刀刀頭
 - 建議您每兩年更換一次電鬚刀刀頭。更換時請一律使用飛利浦電鬚刀刀頭。(圖 21)
- 清潔
 - 使用飛利浦噴霧清潔劑 (HQ110) 徹底清潔電鬚刀刀頭。

回收

本產品使用壽命結束時請勿與一般家庭廢棄物一併丟棄。請將該產品放置於政府指定的回收站，此舉能為環保盡一份心力。

保固與支援

如果您需要資訊或支援，請造訪：
www.philips.com/support，或另行參閱全球保證書。

保固限制
電鬚刀刀頭 (刀具和刀網) 由於其耗損性，因此不在全球保固範圍內。

疑難排解

本單元概述您使用本產品時最常遇到的問題。如果您無法利用以下資訊解決您遇到的問題，請造訪 www.philips.com/support 查看常見問題清單，或聯絡您所在國家/地區的飛利浦客戶服務中心。

問題	可能原因	解決方法
電鬚刀不像平常一樣運作。	電鬚刀刀頭不潔。電鬚刀清潔不夠徹底或是太久沒有清潔。	在您繼續刮鬚前，請徹底清潔電鬚刀刀頭。請參閱「清潔與維護」單元。
	長鬚鬚卡住電鬚刀刀頭。	請使用隨附的毛刷清潔刀具及刀網。請參閱「清潔與維護」單元之「每兩個月：電鬚刀刀頭」一節。
	清潔刀具及刀網後，將其放回固定架時，把刀具及刀網混在一起。	把每一片刀具放入另一個刀網。如果您沒有調換刀具，可能要花 2 到 3 週的時間才能恢復最理想的刮鬚效果。
	電鬚刀刀頭毀壞或磨損。	更換電鬚刀刀頭。請參閱「更換」單元。
將 On/Off 滑動開關往上推，但電鬚刀無法運作。	充電式電池沒電。	為電池充電。請參閱「充電」單元。
刮鬚之後，皮膚感到刺痛。	您的皮膚需要一些時間才能適應飛利浦電鬚刀系統。	開始使用的第 2 到 3 週，皮膚可能會有過敏現象。過了這段時間，皮膚過敏的症狀通常會消失。

問題	可能原因	解決方法
刀頭的旋轉速度比平常緩慢。	過多污垢累積在電鬚刀刀頭中。	請清潔電鬚刀刀頭。請參閱「清潔與維護」單元。
	充電式電池電力不足。	為電池充電。請參閱「充電」單元。
產品發出奇怪的噪音。	過多污垢累積在電鬚刀刀頭中。	請清潔電鬚刀刀頭。清潔後，請使用飛利浦噴霧清潔劑 (HQ110) 潤滑刀網內側的中心點。請參閱「清潔與維護」單元。
	電鬚刀刀頭毀壞或磨損。	更換電鬚刀刀頭。請參閱「更換」單元。
我已將本產品連接電源，但無法 (完成) 刮鬚。	充電式電池沒電。	電鬚刀無法插電運轉。電池電力耗盡時，您必須先讓電池充電，然後拔掉電鬚刀的插頭，才能再度使用電鬚刀。
我已將本產品連接電源，但無法 (完成) 刮鬚。	充電式電池沒電。	電鬚刀無法插電運轉。電池電力耗盡時，您必須先讓電池充電，然後拔掉電鬚刀的插頭，才能再度使用電鬚刀。
	電鬚刀連接到電源時無法運作。	拔下電鬚刀電源插頭，並將小插頭從電鬚刀拔下。

