



English

## Important safety information

Only use the product for its intended purpose. Read this important information carefully before you use the product and its batteries and accessories, and use it for future reference. Misuse can lead to hazards or serious injuries. Accessories supplied may vary for different products.

## Warning

- To charge the product, only use a supply unit, which complies to China GB standard GB4706.1-2005, 5V  $\equiv$ ,  $\geq 1A$ , IPX4, in order to guarantee the electrical safety. We advise to use Philips HQ87, or an equivalent certified supply unit. To obtain HQ87, please consult the Philips service hotline. Using a non-certified supply unit may cause hazards or serious injuries.
- Keep the USB cable and the supply unit (available separately) dry (Fig. 1).
- This shaver is waterproof (Fig. 2). It is suitable for use in the bath or shower and for cleaning under the tap. For safety reasons, the shaver can therefore only be used without cord.
- This appliance can be used by children aged from 8 years and above and persons with reduced physical, sensory or mental capabilities or lack of experience and knowledge if they have been given supervision or instruction concerning use of the appliance in a safe way and understand the hazards involved. Children shall not play with the appliance. Cleaning and user maintenance shall not be made by children without supervision.
- Do not modify the supply unit.
- Do not use the supply unit in or near wall sockets that contain an electric air freshener to prevent irreparable damage to the supply unit.
- Do not use a damaged appliance. Replace damaged parts with new Philips parts.
- Because of hygiene, only one person should use the appliance.
- Unplug the appliance before cleaning it with water.
- Only use cold or lukewarm water to clean the appliance.
- Never use compressed air, scouring pads, abrasive cleaning agents or aggressive liquids to clean the appliance.
- Water may drip from the socket at the bottom of the shaver when you rinse it. This is normal and not dangerous because all electronics are enclosed in a sealed power unit inside the shaver.

- Only use original Philips accessories or consumables.
- Charge, use and store the product at a temperature between 10 °C and 35 °C.
- Keep product and batteries away from fire and do not expose them to direct sunlight or high temperatures.
- If the product becomes abnormally hot or smelly, changes color or if charging takes longer than usual, stop using and charging the product and contact Philips.
- Do not place products and their batteries in microwave ovens or on induction cookers.
- Do not open, modify, pierce, damage or dismantle the product or battery to prevent batteries from heating up or releasing toxic or hazardous substances. Do not short-circuit, overcharge or reverse charge batteries.
- If batteries are damaged or leaking, avoid contact with the skin or eyes. If this occurs, immediately rinse well with water and seek medical care.

## Electromagnetic fields (EMF)

This Philips appliance complies with all applicable standards and regulations regarding exposure to electromagnetic fields.

## Support

For all product support such as frequently asked questions, please visit [www.philips.com/support](http://www.philips.com/support).

## Recycling

- This symbol means that electrical products and batteries shall not be disposed of with normal household waste (Fig. 3).
- Follow your country's rules for the separate collection of electrical products and batteries.

Problem	Possible cause	Solution
The appliance does not work when I press the on/off button.	The appliance is still connected to a power source. For safety reasons, the appliance can only be used without cord.	Unplug the appliance and press the on/off button to switch on the appliance.
	The rechargeable battery is empty.	Recharge the battery.
	The travel lock is activated.	Press the on/off button for 3 seconds to deactivate the travel lock.
	The shaving unit is soiled or damaged to such an extent that the motor cannot run.	Clean the shaving heads thoroughly or replace them.

Problem	Possible cause	Solution
The appliance does not shave as well as it used to.	The shaving heads are damaged or worn.	Replace the shaving heads.
	Hairs or dirt obstruct the shaving heads.	Clean the shaving heads thoroughly.
Water is leaking from the bottom of the appliance.	During cleaning, water may collect between the inner body and the outer shell of the appliance.	This is normal and not dangerous because all electronics are enclosed in a sealed power unit inside the appliance.

## Removal of built-in rechargeable battery

The built-in rechargeable battery must only be removed by a qualified professional when the appliance is discarded. Before removing the battery, make sure that the appliance is disconnected from the wall socket and that the battery is completely empty.

**Take any necessary safety precautions when you handle tools to open the appliance and when you dispose of the rechargeable battery.**

**When you handle batteries, make sure that your hands, the product and the batteries are dry.**

**To avoid accidental short-circuiting of batteries after removal, do not let battery terminals come into contact with metal objects (e.g. coins, hairpins, rings). Do not wrap batteries in aluminum foil. Tape battery terminals or put batteries in a plastic bag before you discard them.**

**Only remove the battery if it is completely empty.**

- 1 Disconnect the shaver from the wall socket or from the USB port and let the shaver run until it stops.
- 2 Insert a flat-head screwdriver between the plastic bottom of the shaver and the socket for the plug. Pry the bottom off the shaver.
- 3 Use a screwdriver to remove the screws.
- 4 With a flat screwdriver, push the bottom of the shaver out of the housing. Do not insert the screwdriver into the socket for the small plug. Remove the housing.
- 5 Press the four pins on the corners of the PCB to detach it.
- 6 Use an electric soldering iron to unsolder the connection strips. Take out the battery.

**Do not connect the shaver to the mains again after the rechargeable battery has been removed.**

## 简体中文

## 重要安全信息

仅可将本产品用于预期用途。使用本产品及其电池和附件之前，请仔细阅读本产品重要信息，并妥善保管以供日后参考。误用可能会导致危害或严重伤害。随附的附件可能因产品而异。

## 警告

- 要为本产品充电，使用者必须使用符合GB4706.1-2005标准的5V  $\equiv$ 、 $\geq 1A$ 、IPX4电源适配器，以确保电气安全。我们建议使用飞利浦电源适配器HQ87或同等且经认证的电源适配器。请咨询飞利浦服务热线以获得HQ87。使用未经认证的电源适配器可能会导致危害或严重伤害。
- 保持 USB 线缆和电源部件（需单独购买）干燥 (图 1)。
- 警告符号注释：禁止在打开的水龙头下进行清洗 (图 1)。
- 该剃须刀具有防水性能 (图 2)。适合在沐浴或淋浴时使用，也可以放在水龙头下清洗。出于安全原因，该剃须刀在使用时不能连接电线。
- 符号注释：适合于在洗澡或淋浴时使用 (图 2)。允许在盛水的浴缸、淋浴、洗脸盆或其他器皿附近使用本器具。
- 本产品也可以由 8 岁或以上年龄的儿童以及肢体不健全、感觉或精神上有所障碍或缺乏相关经验和知识的人士使用，但前提是有人对他们使用本产品进行监督或指导，以确保他们安全使用，并且让他们明白相关的危害。切勿让儿童玩弄本产品。不要让儿童在无人监督的情况下对本产品进行清洁和保养。
- 请勿改装电源部件。
- 请勿在包含电动空气清新器的墙壁插座上或其周围使用电源部件，以免电源部件受到不可修复的损坏。

- 请勿使用已经损坏的产品。请用新的飞利浦部件更换损坏的部件。
- 出于卫生考虑，仅能由一个人使用本产品。
- 用水清洁产品前，请先将电源插头拔掉。
- 请仅使用冷水或温水清洁产品。
- 切勿使用压缩气体、钢丝绒、研磨性清洁剂或腐蚀性液体清洁设备。
- 冲洗剃须刀时，水可能从产品底部的插口漏出。这是正常的，而且没有危险，因为所有电子元件都封闭在剃须刀内部的密封电源部件中。
- 请仅使用飞利浦原装附件或消耗品。
- 充电、使用和存放本产品的温度应介于 10 °C 至 35 °C 之间。
- 请将产品和电池远离火源，切勿将其暴露于阳光直射处或高温下。
- 如果产品异常发热或发出异味、变色或充电时间比平时长，请停止使用并停止为其充电，并联系飞利浦。
- 切勿将产品及其电池放置在微波炉中或电磁炉上。
- 为防止电池发热或释放有毒有害物质，切勿打开、改装、刺穿、损坏或拆卸产品或电池。切勿使电池短路、过度充电或反向充电。
- 如果电池损坏或出现泄漏，请避免与皮肤或眼睛接触。如果不慎接触，请立即用清水冲洗并就医。

## 电磁场 (EMF)

本 Philips 产品符合所有有关暴露于电磁场的适用标准和法规。

## 支持

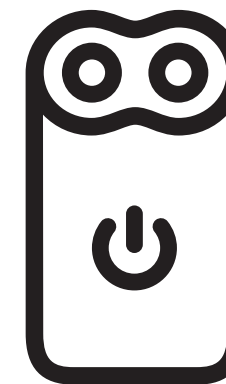
有关常见问题等所有产品支持，请访问 [www.philips.com/support](http://www.philips.com/support)。

## 回收

- 此符号表示电器产品和电池不能与一般的生活垃圾一同弃置 (图 3)。
- 请遵守您所在国家/地区有关分类回收电器产品和电池的规定。

PHILIPS

PQ888  
PQ889



3000.083.3089.3 (4/4/2022)  
Philips N.V. 及其各自所有者所有。  
Philips N.V. 保留所有权利。  
All rights reserved  
© 2022 Koninklijke Philips N.V.



问题	可能的原因	解决方法
按下开/关按钮时，产品不工作。	产品仍连接电源。出于安全原因，本产品在使用时不能连接电线。	拔掉产品插头并按开/关按钮打开产品。
充电电池的电量已耗尽。		给电池充电。
旅行锁已被激活。		按住开/关按钮3秒钟以禁用旅行锁。
剃须刀头部件被污染或损坏，导致马达无法运行。		彻底清洁剃须刀头或将其更换。
产品的剃须效果不如以前好。	剃须刀头已损坏或磨损。	更换剃须刀头。
	毛发或污垢堵塞了剃须刀头。	彻底清洁剃须刀头。
水从产品底部漏出。	在清洁过程中，水可能聚集在产品的机身内部与外壳之间。	这是正常现象，而且没有危险，因为所有电子元件都封闭在产品内部的密封电源部件中。

### 取出内置充电电池

丢弃产品时，必须仅由有资质的专业人员取出内置充电电池。取出电池之前，请确保产品与电源插座断开连接并且电池电量已完全耗尽。

**当您使用工具打开产品时以及在您弃置充电电池时，请采取必要的安全保护措施。**

**处理电池时，请确保您的双手、产品和电池都是干燥的。**

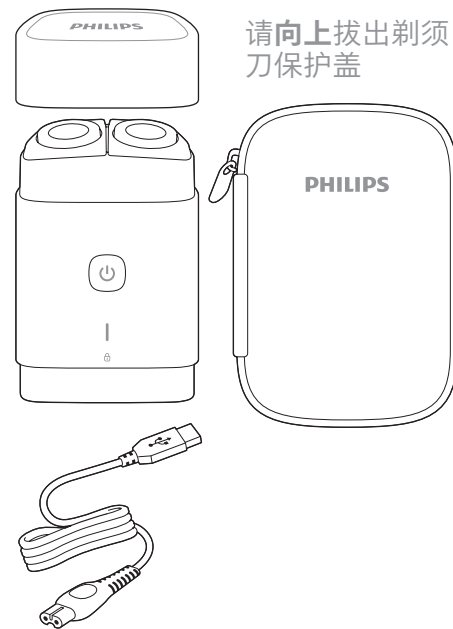
**为避免电池拆卸后发生意外短路，切勿让电池端子接触金属物体（例如硬币、发夹、戒指）。切勿用铝箔包裹电池。在丢弃之前，请用胶带将电池端子粘住或将电池放在塑料袋中。**

**仅在电池电量完全耗尽后方可取出电池。**

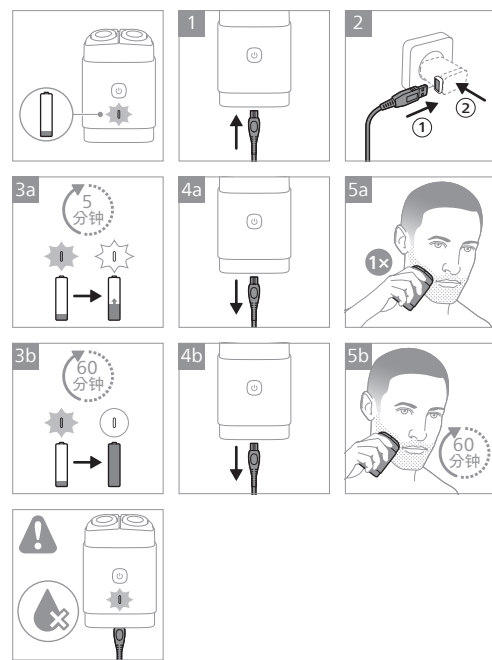
- 1 将剃须刀从电源插座或 USB 端口拔下，让剃须刀运行，直至停止为止。
- 2 将平头螺丝刀插入剃须刀塑料底部和插头的插孔之间。将剃须刀的底部撬出。
- 3 使用螺丝刀卸下螺丝。
- 4 使用平头螺丝刀将剃须刀的底部从外壳中推出。请勿将螺丝刀插入小插头的插孔。取下外壳。
- 5 按下 PCB 角上的四个插脚，将其拆下。
- 6 用电烙铁拆开连接片。取出电池。

**取出充电电池后，请勿再将剃须刀连接至电源。**

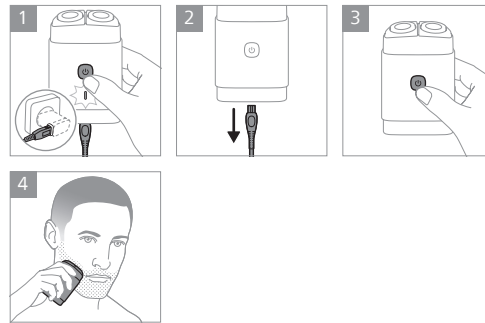
随附的附件可能因产品而异。



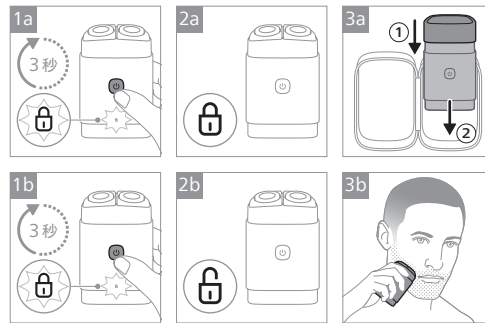
### 为剃须刀充电



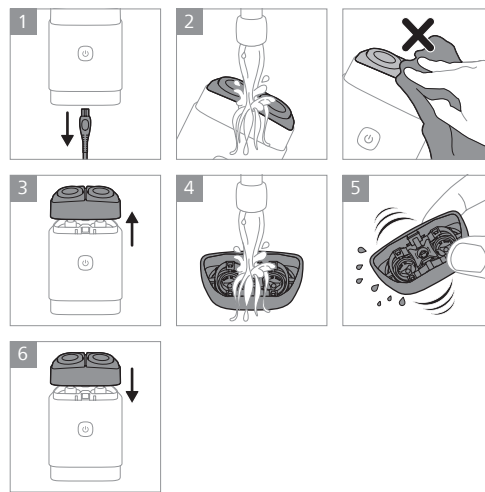
### 使用前拔掉充电器



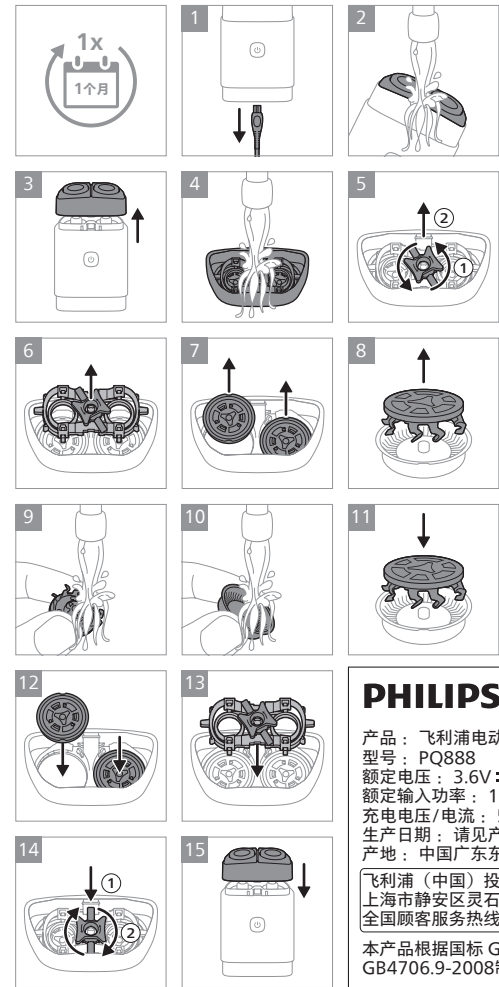
### 旅行锁



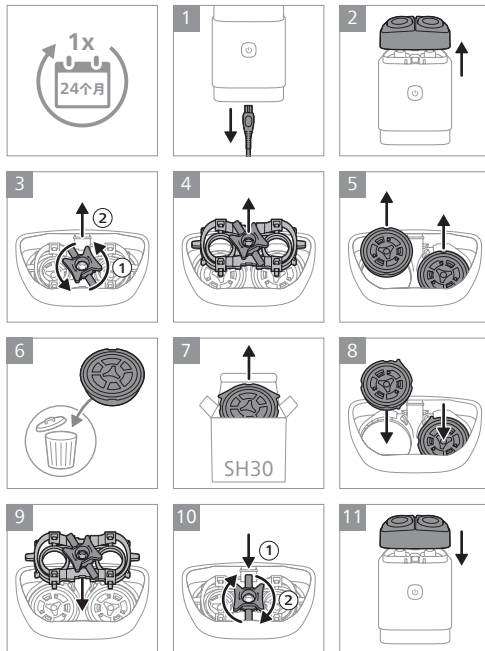
### 用水龙头清洁



### 彻底清洁



### 更换刀头



### PHILIPS

产品：飞利浦电动剃须刀  
型号：PQ888  
额定电压：3.6V  
额定输入功率：1.7W  
充电电压/电流：5V/1A  
生产日期：请见产品本体  
产地：中国广东东莞

飞利浦（中国）投资有限公司  
上海市静安区灵石路718号A1幢  
全国顾客服务热线：4008 800 008

本产品根据国标 GB4706.1-2005, GB4706.9-2008制造

不包含电源适配器。使用者必须使用符合 GB4706.1-2005标准的5V、≥1A、IPX4电源适配器，以确保电气安全。

### PHILIPS

产品：飞利浦电动剃须刀  
型号：PQ889  
额定电压：3.6V  
额定输入功率：1.7W  
充电电压/电流：5V/1A  
生产日期：请见产品本体  
产地：中国广东东莞

飞利浦（中国）投资有限公司  
上海市静安区灵石路718号A1幢  
全国顾客服务热线：4008 800 008

本产品根据国标 GB4706.1-2005, GB4706.9-2008制造

不包含电源适配器。使用者必须使用符合 GB4706.1-2005标准的5V、≥1A、IPX4电源适配器，以确保电气安全。

该表格中所显示的“有害物质”在产品正常使用情况下不会对人身和环境产生任何伤害。  
该表格中所显示的“有害物质”及其存在的部件向消费者和回收处理从业者提供相关物质的存在信息，有助于产品废弃时的妥善处理。

部件名称	产品中有毒物质的名称及含量					
	有害物质					
	铅 (Pb)	汞 (Hg)	镉 (Cd)	六价铬 (Cr (VI))	多溴联苯 (PBB)	多溴二苯醚 (PBDE)
PCB's 集成电路板	X	O	O	O	O	O
Electrical contact pins 电接触片	X	O	O	O	O	O
Power cable 充电线	X	O	O	O	O	O
Internal metal parts 内部金属件	X	O	O	O	O	O

本表格依据SJ/T 11364的规定编制。  
O: 表示该有害物质在该部件所有均质材料中的含量均在GB/T 26572规定的限量要求以下。  
X: 表示该有害物质至少在该部件的某一均质材料中的含量超出GB/T 26572规定的限量要求。