

PHILIPS

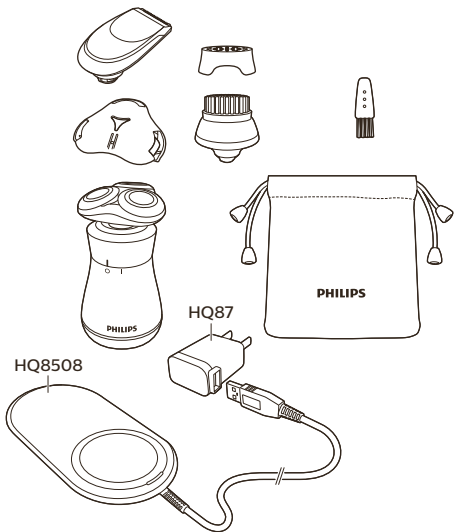
S8870
S8860

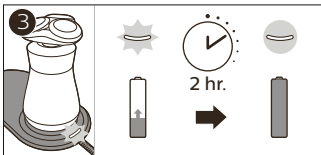
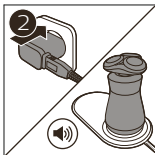
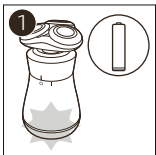


www.philips.com/support

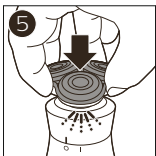
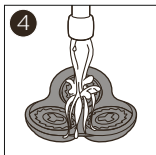
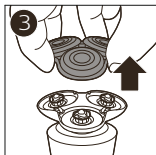
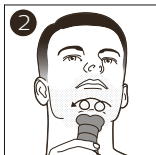
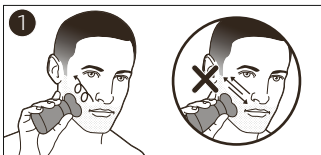


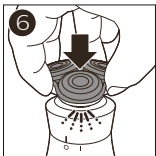
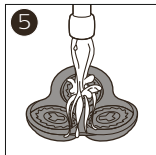
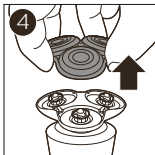
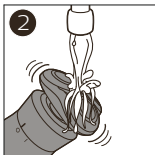
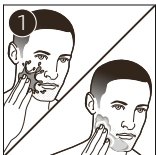
www.philips.com/support

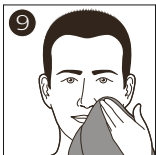
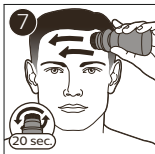
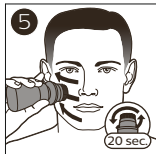
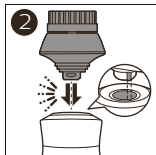
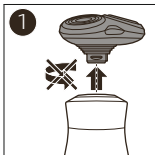
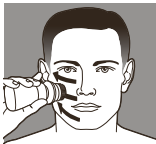


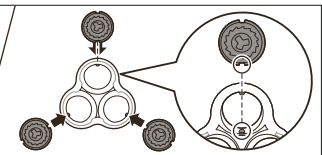
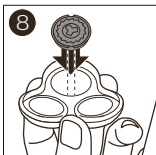
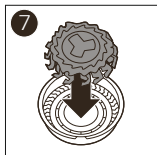
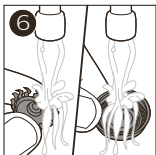
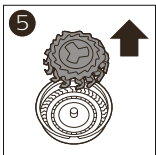
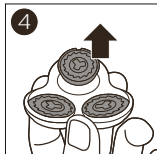
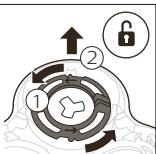
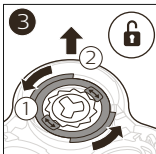
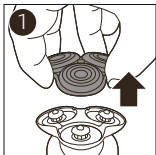
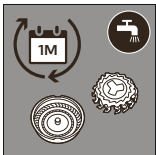


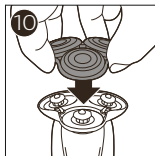
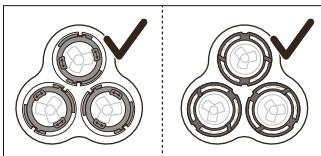
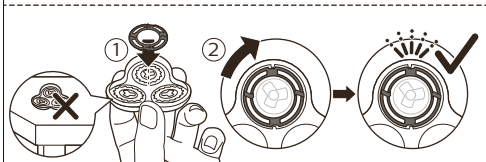
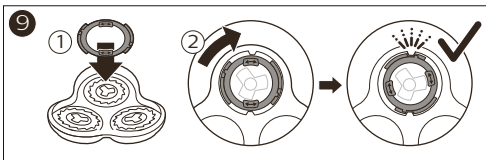


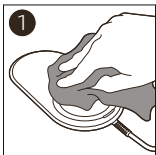
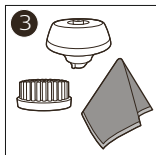
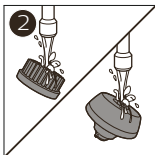
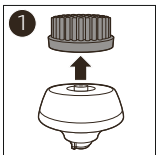
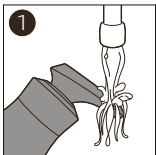


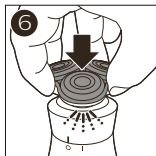
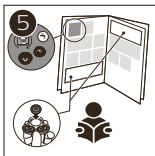
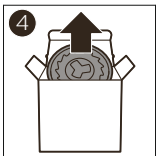
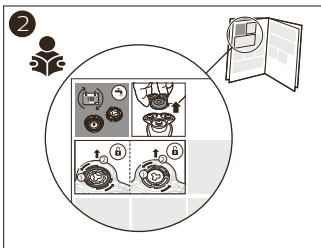
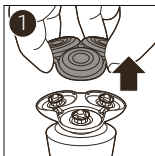


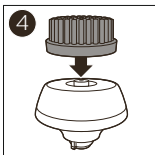
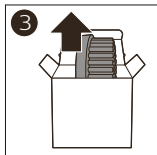
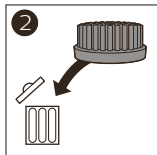
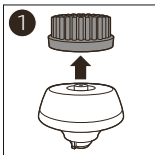
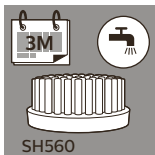












設備名稱: 飛利浦電鬚刀 型號: S8860

單元 Unit	限用物質及其化學符號					
	鉛 (Pb)	汞 (Hg)	鎘 (Cd)	六價鉻 (Cr ⁺⁶)	多溴聯苯 (PBB)	多溴二苯醚 (PBDE)
電路板 PCBs	-	○	○	○	○	○
刀片 Electrical contact pins	-	○	○	○	○	○
電源供應器 Supply unit	-	○	○	○	○	○
金屬部件 Internal metal parts	-	○	○	○	○	○

備考1. "超出0.1 wt %" 及 "超出0.01 wt %" 係指限用物質之百分比含量超出百分比含量基準值。
備考2. "○" 係指該項限用物質之百分比含量未超出百分比含量基準值。
備考3. "-" 係指該項限用物質為排除項目。

© 2019 Koninklijke Philips N.V.
All rights reserved
4222.002.5833.5 (2/1/2019)



>75 % recycled paper
>75 % papier recyclé