

## Straightener

HP8297

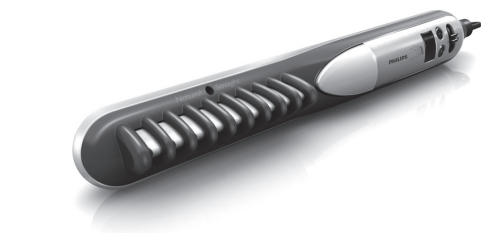
### English

Congratulations on your purchase, and welcome to Philips! To fully benefit from the support that Philips offers, register your product at [www.philips.com/welcome](http://www.philips.com/welcome).

## 1 Important

Read this user manual carefully before you use the appliance and keep it for future reference.

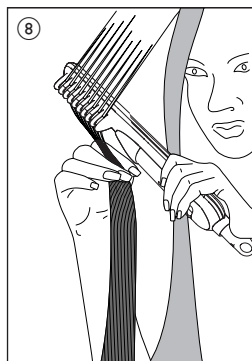
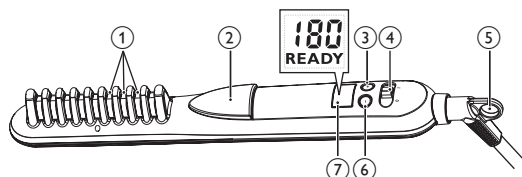
- **WARNING:** As straighteners reach high temperatures, keep them out of the reach of children during heat-up, use and cool-down to avoid burnings.
- **WARNING:** Do not use this appliance near water.
- When the appliance is used in a bathroom, unplug it after use since the proximity of water presents a risk, even when the appliance is switched off.
- **WARNING:** Do not use this appliance near bathtubs, showers, basins or other vessels containing water.
- Before you connect the appliance, ensure that the voltage indicated on the appliance corresponds to the local power voltage.
- Do not use the appliance for any other purpose than described in this manual.
- Only use the appliance on dry hair. Do not use the appliance on artificial hair.
- Keep the hot surfaces of the appliance away from your skin.
- When the appliance is connected to the power, never leave it unattended.
- Always unplug the appliance after use.
- When the appliance is hot, keep it on a heat-resistant surface and never cover the appliance with anything, such as a towel or clothing.
- Never use any accessories or parts from other manufacturers or that Philips does not specifically recommend. If you use such accessories or parts, your guarantee becomes invalid.
- Do not wind the mains cord round the appliance.
- If you use the appliance on color-treated hair, the straightening plates may stain.
- If the mains cord is damaged, you must have it replaced by Philips, a service centre authorised by Philips or similarly qualified persons in order to avoid a hazard.
- This appliance is not intended for use by persons (including children) with reduced physical, sensory or mental capabilities, or lack of experience and knowledge, unless they have been given supervision or instruction concerning use of the appliance by a person responsible for their safety.
- Children should be supervised to ensure that they do not play with the appliance.
- For additional protection, we advise you to install a residual current device (RCD) in the electrical circuit that supplies the bathroom. This RCD must have a rated residual operating current not higher than 30mA. Ask your installer for advice.



EN User manual

ZH-CN 用户手册

PHILIPS



© Royal Philips Electronics N.V. 2011  
All rights reserved.

Specifications are subject to change without notice.  
Trademarks are the property of Koninklijke Philips  
Electronics N.V. or their respective owners.

3140 035 22143



## Electromagnetic fields (EMF)

This appliance complies with all standards regarding electromagnetic fields (EMF). If handled properly and according to the instructions in this user manual, the appliance is safe to use based on scientific evidence available today.

## Environment

Do not throw away the appliance with the normal household waste at the end of its life, but hand it in at an official collection point for recycling. By doing this, you help to preserve the environment.



## 2 Straighten your hair

Ensure that you select a temperature setting that is suitable for your hair. Always select a low setting when you use the straightener for the first time.

Hair Type	Temperature Setting
Thick or coarse	Mid to High (170 °C and above)
Fine or medium-textured	Low to Mid (160 °C and below)
Pale, blonde, bleached or color-treated	Low (Below 160 °C)

- 1 Connect the plug to a power supply socket.
- 2 Slide the On/Off switch (4) to I to switch on the appliance.  
→ The display screen (7) lights up and the default temperature setting 180 °C is displayed.
- 3 Press the + (3) or - (6) buttons to select a suitable temperature setting for your hair.  
→ When the comb plates have heated up to the selected temperature, the stable indication "READY" is displayed.
- 4 The ion function activates when the appliance is switched on, which provides additional shine and reduces frizz.  
→ When the function is on, a special odor may be smelt and a sizzling noise may be heard, which is normal and caused by the ions that are generated.
- 5 Comb your hair (**with a brush or comb**) and take a section that is not wider than 5cm for straightening.
- 6 Press the button (2) to open the comb teeth (1).
- 7 Insert your hair evenly between the comb teeth and release the comb button that the hairs are clamped between the teeth.
- 8 Slide the comb straightener down the length of the hair in a single motion (max. 10 seconds) from root to tip, without stopping to prevent overheating.  
**Note:** Hold the tips of your hair with your other hand during the whole straightening process, so that the hair remains evenly distributed between the teeth of the straightening comb. This avoids that hairs fall out of the teeth before they are straightened.
- 9 After 20 seconds, repeat step 6 to 8 until you achieve the desired look.
- 10 To straighten the rest of your hair, repeat steps 6 to 9.  
**Note:** The appliance has auto-shut off function. It switches off automatically after 60 minutes. You can reactivate the appliance by setting the On/Off switch (4) off and on again.

### Straightening while reducing the volume

- 1 To reduce the volume, place the straightening comb on top of the section of hair and slide them slowly along the section from roots to tips like you do when brushing the hair with a normal brush.

### Straightening while increasing the volume

#### Volume at hair-line: (8)

- 1 Place the straightening comb under your hair. It will straighten while lifting the roots and giving your hair volume.

#### Volume at roots: (9)

- 1 To generate a volume effect at the roots, place the straightening comb under your hair as close as possible to the roots. Make sure that the comb goes through your hair completely.
- 2 Turn the straightening comb about 45° while gently sliding it towards the tips. This rotating movement will give your roots a maximum of volume.

### To create flicks:

- 1 Straighten a section of hair and turn the straightening comb half-circle inwards (or outwards) when it reaches the end of the hair.  
**Note:** Hold the tips of your hair with your other hand during the whole straightening process.
  - 2 Hold the straightening comb in the same position for 2 to 3 seconds, and then release it.
- After use:**
- 1 Switch off the appliance and unplug it.
  - 2 Place it on a heat-resistant surface until it cools down.
  - 3 Clean the appliance and plates by damp cloth.
  - 4 Keep it in a safe and dry place, free of dust. You can also hang it with the hanging loop (5) or store it in the supplied pouch.

### Natural Straight

1. Before styling, blow dry your hair from the top with your fingers or a brush. This ensures a healthy styling start.
2. Set the appropriate temperature to your hair type. 160 °C if you have thin and wavy hair and 180 °C degrees for thick and curly hair. To create volume reverse the product underneath your hair close to the roots like you see in the picture.
3. Now release the button and let the ceramic plates glide through your hair.
4. Achieve your style in an easy and healthy way - natural straight hair with a touch of volume.

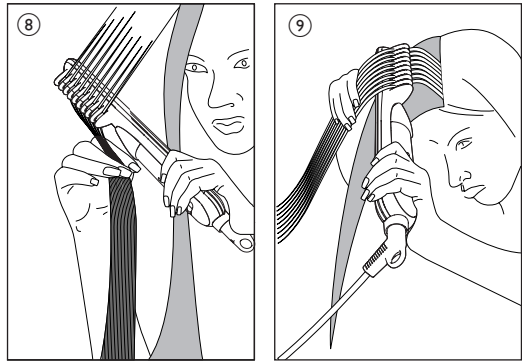
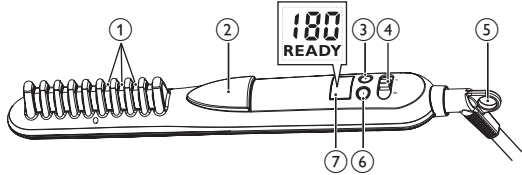
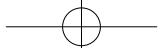


## 3 Guarantee and service

If you need information e.g. about replacement of an attachment or if you have a problem, please visit the Philips website at [www.philips.com/support](http://www.philips.com/support) or contact the Philips Customer Care Centre in your country (you find its phone number in the worldwide guarantee leaflet). If there is no Consumer Care Centre in your country, go to your local Philips dealer.

## 4 Troubleshooting

Problem	Cause	Solution
The appliance does not work at all.	The power socket to which the appliance has been connected may not live.	Ensure the socket is live.
	The mains cord of the appliance may be damaged.	If the mains cord is damaged, you must have it replaced by Philips, a service centre authorised by Philips or similarly qualified persons in order to avoid a hazard.



## 简体中文

感谢您的惠顾，欢迎光临 Philips！为了您能充分享受 Philips 提供的支持，请在 [www.philips.com/welcome](http://www.philips.com/welcome) 注册您的产品。

## 1 注意事项

- 使用产品之前，请仔细阅读本产品手册，并妥善保管以供日后参考。
- 警告：由于直发器温度可升至很高，因此在加热、使用和冷却期间，请使其置于儿童够不到的地方，以免烫伤。
  - 警告：切勿靠近水使用本产品。
  - 如果在浴室中使用本产品，用完后请拔下电源插头，因为靠近水使用会有危险，即使已关闭产品电源。
  - 警告符号注释：禁止在洗澡或淋浴时使用。
  - 警告：不要在盛水的浴缸、淋浴、洗脸盆或其他器皿附近使用本器具。
  - 连接产品之前，请确保产品上标示的电压与当地电源电压相符。
  - 请勿将本产品用于本手册中说明以外的任何其它用途。
  - 产品只能用于干的头发。请勿对假发使用本产品。
  - 避免产品的高温表面接触到皮肤。
  - 当产品连接了电源时，切勿让其无人看管。
  - 使用后务必拔下产品的插头。
  - 如果产品很热，请将其放在耐热表面上，切勿在产品表面覆盖任何物品（如毛巾或衣服）。
  - 切勿使用由其它制造商生产的，或未经飞利浦特别推荐的任何附件或部件。如果使用此类附件或部件，您的保修将失效。
  - 切勿将电源线缠绕在产品上。
  - 当产品用于染过色的头发时，直发夹板可能会染上颜色。

- 如果电源软线损坏，为避免危险，必须由制造厂或其维修部或类似的专职人员来更换。
- 本产品不打算由肢体不健全、感觉或精神上有障碍或缺乏相关经验和知识的人（包括儿童）使用，除非有负责他们安全的人对他们使用本产品进行监督或指导。
- 应照看好儿童，确保他们不玩耍该产品。
- 为提供进一步的保护，建议您在浴室的供电电路中安装漏电断路器 (RCD)。此 RCD 的额定漏电动作电流不得高于 30 毫安。有关建议，请咨询安装人员。

## 电磁场 (EMF)

本产品符合与电磁场 (EMF) 相关的所有标准。目前的科学依据证明，如果正确使用并根据本产品手册中的说明进行操作，则本产品是安全的。

## 环境

弃置产品时，请不要将其与一般生活垃圾堆放在一起，应将其交给政府指定的回收中心。这样做有利于环保。



## 2 拉直头发

确保选择适合您发质的温度设定。  
首次使用直发器时应始终选择低温设定。

发质类型	温度设定
浓密或毛糙	中到高 (170 °C 及以上)
纤细或中性发质	低到中 (160 °C 及以下)
白发、金发、经过漂白或者染过色的头发	低 (低于 160 °C)

- 将插头连接至电源插座。
- 将电源开/关滑钮 (④) 滑至 I 以打开产品。  
→ 显示屏 (⑦) 将亮起，并显示默认温度设置 180 °C。
- 按 + (③) 或 - (⑥) 选择适合您发质的温度设定。  
→ 当直发梳夹板加热至选定的温度后，将稳定显示 “READY”（就绪）字样。
- 产品开启后，负离子功能激活，从而提供更多亮泽，减少毛躁。  
→ 负离子功能打开时，可能会发出一种特殊的气味和滋滋的噪音，这是正常现象，由所产生的负离子导致。
- 梳理头发（使用发刷或发梳），取一络宽度不超过 5 厘米的头发进行拉直。
- 按下按钮 (②) 打开梳齿 (①)。
- 将头发均匀放入梳齿之间，然后松开直发梳按钮，使头发夹在梳齿之间。
- 从发根至发梢，将发梳顺着头发往下拉（不要超过 10 秒钟），动作要流畅，不要停顿，以免过热灼伤头发。  
注意：在直发过程中，用另一只手握住发梢，从而使头发在直发梳的梳齿间均匀分布。这样可以避免头发还没有拉直就从梳齿掉下来。
- 20 秒钟后，重复步骤 6 至 8，直至获得所需的造型。
- 要拉直头发的其余部分，重复步骤 6 至 9 即可。  
注意：产品具有自动关熄功能。产品会在 60 分钟后自动关闭。您可以通过关闭并重新打开开/关滑钮 (④) 来重新激活产品。

### 拉直时减少丰盈

- 要减少丰盈，请将直发梳置于发络的顶端，然后从发根到发梢沿着发络缓缓滑动，就像用普通刷子刷头发一样。

### 拉直时增加丰盈

#### 发际线丰盈：(⑧)

- 将直发梳放在头发下面。它将一边拉直，一边提起发根，从而使头发丰盈。

#### 发根丰盈：(⑨)

- 要使发根产生丰盈效果，请将直发梳放在头发下面，尽量靠近发根。确保直发梳完全滑过您的头发。
- 一边将直发梳轻轻朝发梢滑动，一边将其卷动大约 45°。通过这样的卷动操作，可以使您的发根获得最大程度的丰盈效果。

### 要制作发梢：

- 将一络头发拉直，然后在直发梳到达发梢时向内（或向外）卷半圈。  
注意：在整个直发过程中，始终用另一只手握住发梢。

- 将直发梳保持相同的姿势 2 至 3 秒钟，然后松开。

### 使用后：

- 关闭产品并拔下电源插头。
- 将产品置于隔热表面上，直至其冷却。
- 用潮湿的布清洁本产品和夹板。
- 将产品存放在安全、干燥、清洁的位置。您也可以使用挂环 (⑤) 将产品挂起，或将其存放在随附的软袋中。

### 自然直发

- 造型之前，先用手指或梳子自上而下吹干您的头发。这样可以确保健康造型。
- 为您的头发类型设定适当的温度。如果您的头发是稀疏的波浪形，则温度为 160 °C；如果是浓密的卷发，则为 180 °C。  
要塑造发卷，请将产品放在头发下面逆着靠近发根，如图所示。
- 现在释放按钮，让陶瓷夹板滑过头发。
- 以轻松而又健康的方式获得您的造型 - 自然的直发中带一点卷曲。



## 3 保修和服务

如果您需要了解信息（如更换附件的相关信息）或有任何疑问，请访问 Philips 网站 [www.philips.com/support](http://www.philips.com/support)。您也可以与您所在地的 Philips 客户服务中心联系（可从保修卡中找到其电话号码）。如果您所在的国家/地区没有 Philips 客户服务中心，请咨询当地的 Philips 经销商求助。

## 4 故障种类和处理方法

问题	原因	解决方法
产品完全无法工作。	产品所连接的电源插座可能没有通电。	确保插座通电。
	产品的电源线可能已损坏。	如果电源软线损坏，为了避免危险，必须由制造商、其维修部或类似部门的专业人员来更换。

# PHILIPS

产品 : 飞利浦直发器  
型号 : HP8297  
额定电压 : 220V~  
额定频率 : 50Hz  
额定输入功率: 25W  
生产日期 : 请见产品手柄  
产地 : 中国



珠海经济特区飞利浦家庭电器有限公司  
中国珠海市三灶镇琴石工业区  
邮政编码: 519040

全国顾客服务热线: 4008 800 008

本产品根据国际GB4706.1-2005, GB4706.15-2008, GB4343.1-2009及GB17625.1-2003制造