

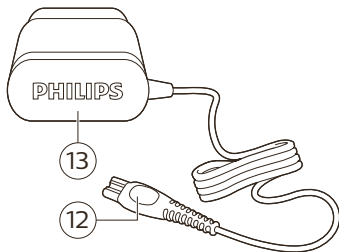
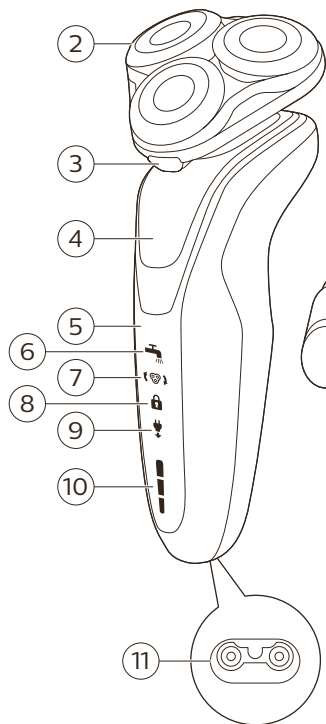
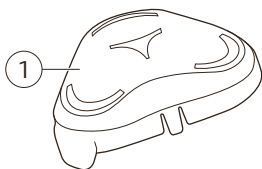
**PHILIPS**

**S5000**

S5951









**English 6**

简体中文 **25**

## General description

- 1 Protection cap for shaving unit
- 2 Click-on shaving unit
- 3 Release button
- 4 On/off button
- 5 Handle
- 6 Cleaning reminder
- 7 Replacement reminder
- 8 Travel lock symbol
- 9 Unplug for use symbol
- 10 Battery charge indicator with 3 lights
- 11 Socket for small plug
- 12 Small plug
- 13 Supply unit

## Introduction

Congratulations on your purchase and welcome to Philips! To fully benefit from the support that Philips offers, register your product at [\*\*www.philips.com/welcome\*\*](http://www.philips.com/welcome).

## Important safety information

Read this important information carefully before you use the appliance and its accessories and save it for future reference. The accessories supplied may vary for different products.

### Danger



- Keep the supply unit dry.

## Warning

- To charge the battery, only use the detachable supply unit (HQ8505) provided with the appliance.
- The supply unit contains a transformer. Do not cut off the supply unit to replace it with another plug, as this causes a hazardous situation.
- This appliance can be used by children aged from 8 years and above and persons with reduced physical, sensory or mental capabilities or lack of experience and knowledge if they have been given supervision or instruction concerning use of the appliance in a safe way and understand the hazards involved. Children shall not play with the appliance. Cleaning and user maintenance shall not be made by children without supervision.
- Always unplug the shaver before you clean it under the tap.
- Always check the appliance before you use it. Do not use the appliance if it is damaged, as this may cause injury. Always replace a damaged part with one of the original type.

- Do not open the appliance to replace the rechargeable battery.

## **Caution**

- Never use water hotter than 60°C to rinse the shaver.
- Only use this appliance for its intended purpose as shown in the user manual.
- For hygienic reasons, the appliance should only be used by one person.
- Never use compressed air, scouring pads, abrasive cleaning agents or aggressive liquids such as petrol or acetone to clean the appliance.
- Water may drip from the socket at the bottom of the shaver when you rinse it. This is normal and not dangerous because all electronics are enclosed in a sealed power unit inside the shaver.
- Do not use the supply unit in or near wall sockets that contain an electric air freshener to prevent irreparable damage to the supply unit.



## Electromagnetic fields (EMF)

This Philips appliance complies with all applicable standards and regulations regarding exposure to electromagnetic fields.

## General



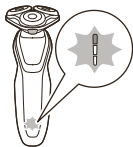
- This shaver is waterproof. It is suitable for use in the bath or shower and for cleaning under the tap. For safety reasons, the shaver can therefore only be used without cord.
- The supply unit is suitable for mains voltages ranging from 100 to 240 volts.
- The supply unit transforms 100-240 volts to a safe low voltage of less than 24 volts.

## The display

### Battery charge indicator

**Note:** If you press the on/off button during charging, the 'unplug for use' symbol flashes white to remind you that you have to disconnect the appliance from the wall socket.

**Quick charge:** When the battery is empty and you connect the appliance to the wall socket, the lights of the battery charge indicator light up one after the other repeatedly. When the appliance contains enough energy for one shave, the bottom light of the battery charge indicator starts flashing slowly. While the appliance continues to charge, first the bottom light of the battery charge indicator flashes and then lights up continuously. Then the second light flashes and then lights up continuously, and so on until the appliance is fully charged.



## Battery fully charged

Note: When the battery is full, the display switches off automatically after 30 minutes.

Note: This appliance can only be used without cord.



When the battery is fully charged, all lights of the battery charge indicator light up white continuously.

## Battery low



When the battery is almost empty, the bottom light of the battery charge indicator flashes orange. At this point there is enough energy left for one shave.

## Remaining battery charge



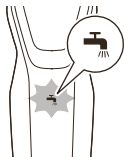
The remaining battery charge is shown by the lights of the battery charge indicator that light up continuously.

## 'Unplug for use' reminder



The 'unplug for use' symbol flashes to remind you that you have to disconnect the appliance from the wall socket before you can switch it on.

## Cleaning reminder



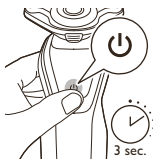
Clean the shaver after every use for optimal performance. When you switch off the appliance, the cleaning reminder flashes to remind you to clean the appliance.

## Travel lock

When you are going to travel, you can lock the shaver to prevent it from accidentally switching on (see 'Activating the travel lock').

### Activating the travel lock

- 1 Press the on/off button for 3 seconds to use the travel lock mode.



While you activate the travel lock, the travel lock symbol lights up continuously. When the travel lock is activated, the travel lock symbol flashes.

If you try to switch on the shaver while the travel lock is active, the travel lock symbol flashes.

### Deactivating the travel lock

- 1 Press the on/off button for 3 seconds.

While you deactivate the travel lock, the travel lock symbol lights up briefly and the shaver produces a short sound. The shaver switches on and is now ready for use again.



## Replacement reminder



For maximum shaving performance, we advise you to replace the shaving heads every two years. The appliance is equipped with a replacement reminder which reminds you to replace the shaving heads. The shaving unit symbol and arrows light up to indicate that you have to replace the shaving heads (see 'Replacing the shaving heads').

**Note:** After replacing the shaving heads, you can reset the replacement reminder by pressing the on/off button for 7 seconds. If you do not reset the replacement reminder, the shaver resets automatically after 9 shaves.

## Charging

Charge the shaver before you use it for the first time and when the display indicates that the battery is almost empty.

Charging takes approx. 1 hour. When the appliance is fully charged, it has an operating time of 70 minutes.

**Note:** You cannot use the appliance while it is charging.

## Charging with the supply unit



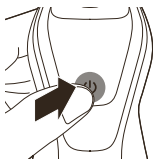
- 1 Make sure the appliance is switched off.
- 2 Put the small plug in the appliance and put the supply unit in the wall socket.
- 3 After charging, remove the supply unit from the wall socket and pull the small plug out of the appliance.

**Note:** When the battery is full, the display switches off automatically after 30 minutes.

## Using the appliance

Note: This appliance can only be used without cord.

### Switching the appliance on and off



- 1 To switch on the appliance, press the on/off button once.
- 2 To switch off the appliance, press the on/off button once.

Battery charge indicator with 3 lights: The display lights up for a few seconds to show the remaining battery status.

## Shaving

### Skin adaptation period

Your first shaves may not bring you the result you expect and your skin may even become slightly irritated. This is normal. Your skin and beard need time to adapt to any new shaving system. To allow your skin to adapt to this new appliance, we advise you to shave regularly (at least 3 times a week) and exclusively with this appliance for a period of 3 weeks.

### Dry shaving



- 1 Switch on the appliance.
- 2 Move the shaving heads over your skin in circular movements to catch all hairs growing in different directions. Make sure each shaving head is fully in contact with the skin. Exert gentle pressure for a close, comfortable shave.

Note: Do not press too hard, as this can cause skin irritation.

- 3 Clean the appliance after use.

## Wet shaving

For a more comfortable shave, you can also use this appliance on a wet face with shaving foam or shaving gel.

To shave with shaving foam or shaving gel, follow the steps below:

**1** Apply some water to your skin.



**2** Apply shaving foam or shaving gel to your skin.



**3** Rinse the shaving unit under the tap to ensure that the shaving unit glides smoothly over your skin.



**4** Switch on the appliance.

**5** Move the shaving heads over your skin in circular movements to catch all hairs growing in different directions. Make sure each shaving head is fully in contact with the skin. Exert gentle pressure for a close, comfortable shave.



Note: Do not press too hard, this can cause skin irritation.

Note: Rinse the shaving unit regularly to ensure that it continues to glide smoothly over your skin.

**6** Dry your face.

- 7 Clean the appliance after use.

Note: Make sure you rinse all foam or shaving gel off the appliance.

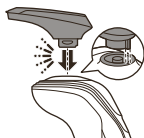
## Using the click-on attachments

Note: The accessories supplied may vary for different products. The box shows the accessories that have been supplied with your product.

### Removing or attaching click-on attachments

- 1 Make sure the appliance is switched off.
- 2 Pull the attachment straight off the appliance.

Note: Do not twist the attachment while you pull it off the appliance.



- 3 Insert the lug of the attachment into the slot in the top of the appliance. Then press down the attachment to attach it to the appliance ('click').

## Cleaning and maintenance

Note: The accessories supplied may vary for different products. The box shows the accessories that have been supplied with your product.

### Cleaning the shaver under the tap

Clean the shaver after every use for optimal performance.

**Be careful with hot water. Always check if the water is not too hot, to prevent burning your hands.**

**Never dry the shaving unit with a towel or tissue, as this may damage the shaving heads.**

**While rinsing the shaving unit, water may drip out of the base of shaver. This is a normal occurrence.**

- 1 Switch on the appliance.
- 2 Rinse the shaving unit under a warm tap.



- 3 Switch off the appliance. Press the release button to open the shaving unit.



- 4 Rinse the hair chamber under the tap.



- 5 Rinse the shaving head holder under a warm tap.
- 6 Carefully shake off excess water and let the shaving head holder air-dry completely.



- 7 Close the shaving head holder ('click').





## Storage

We advise you to let the appliance and its attachments dry before you put the protection caps on the attachments or store the shaver in the pouch.

**Note:** The accessories supplied may vary for different products. The box shows the accessories that have been supplied with your product.

Put the protection cap on the shaver to protect it from any dirt accumulation.



## Replacement

### Replacing the shaving heads



For maximum shaving performance, we advise you to replace the shaving heads every two years. Replace damaged shaving heads immediately. Always replace the shaving heads with original Philips shaving heads (see 'Ordering accessories').

### Replacement reminder

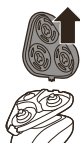
The replacement reminder indicates that the shaving heads need to be replaced. The shaving unit symbol and arrows light up when you switch off the appliance.

- 1 Switch off the appliance.

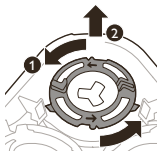




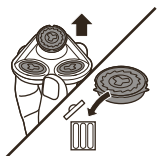
- 2** Press the release button to open the shaving unit.



- 3** Pull the shaving head holder off the bottom part of the shaving unit.

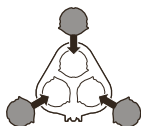


- 4** Turn the retaining rings counterclockwise and remove them. Place them aside in a safe place.

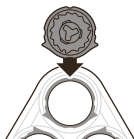


- 5** Remove the shaving heads from the shaving head holder.

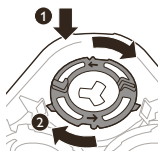
Discard the used shaving heads immediately to avoid mixing them with the new shaving heads.



- 6** Place the new shaving heads in the shaving head holder.

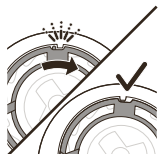


Note: Make sure that the projections of the shaving heads fit exactly into the recesses of the shaving head holder.

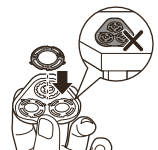


- 7** Place the retaining rings back onto the shaving heads and turn them clockwise to reattach the retaining ring.

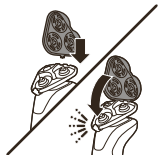
Each retaining ring has two recesses and two projections that fit exactly in the projections and recesses of the shaving head holder.



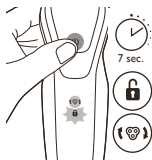
- Turn the ring clockwise until you hear a click to indicate that the ring is fixed.



Note: Hold the shaving head holder in your hand when you reinsert the shaving heads and reattach the retaining rings. Do not place the shaving head holder on a surface, as this may cause damage to the shaving heads.



- 8** Reinsert the hinge of the shaving head holder into the slot of the shaving unit. Close the shaving head holder ('click').



- 9 To reset the replacement reminder, press and hold the on/off button for approx. 7 seconds.

## Ordering accessories

To buy accessories or spare parts, visit **[www.philips.com/parts-and-accessories](http://www.philips.com/parts-and-accessories)** or go to your Philips dealer. You can also contact the Philips Consumer Care Center in your country (see the international warranty leaflet for contact details).

The following accessories and spare parts are available:

- SH50 Philips shaving heads
- HQ110 Philips shaving head cleaning spray
- RQ111 Philips beard styler attachment
- RQ585 Philips cleansing brush attachment
- RQ560, RQ563 Philips cleansing brush heads
- JC301, JC302, JC303, JC304, JC305 cleaning cartridge
- HQ8505 supply unit

Note: The availability of the accessories may differ by country.

## Recycling



- This symbol means that this product shall not be disposed of with normal household waste (2012/19/EU).



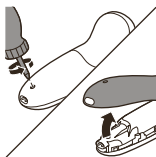
- This symbol means that this product contains a built-in rechargeable battery which shall not be disposed of with normal household waste (2006/66/EC). Please take your product to an official collection point or a Philips service center to have a professional remove the rechargeable battery.
- Follow your country's rules for the separate collection of electrical and electronic products and rechargeable batteries. Correct disposal helps prevent negative consequences for the environment and human health.

## Removing the rechargeable shaver battery

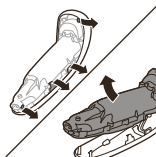
**Only remove the rechargeable battery when you discard the appliance. Before you remove the battery, make sure that the appliance is disconnected from the mains and that the battery is completely empty.**

**Take any necessary safety precautions when you handle tools to open the appliance.**

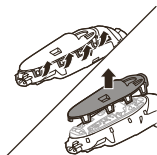
**Be careful, the battery strips are sharp.**



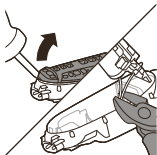
- 1 Remove the screw in the back of the shaver.
- 2 Remove the back panel.



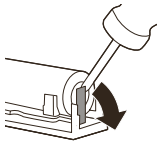
- 3 Take out the power unit.



- 4 Bend the snap hooks aside and remove the transparent cover of the power unit.



- 5 Lift out the battery holder and cut the wires with a pair of cutting pliers or scissors.



- 6 Bend the battery tags aside with a pair of cutting pliers or a screw driver.  
7 Remove the rechargeable batteries.

## Warranty and support

If you need information or support, please visit **[www.philips.com/support](http://www.philips.com/support)** or read the international warranty leaflet.

### Warranty restrictions

The shaving heads (cutters and guards) are not covered by the terms of the international warranty because they are subject to wear.

## Troubleshooting

This chapter summarizes the most common problems you could encounter with the appliance. If you are unable to solve the problem with the information below, visit **[www.philips.com/support](http://www.philips.com/support)** for a list of frequently asked questions or contact the Consumer Care Center in your country.

## Shaver

Problem	Possible cause	Solution
The appliance does not work when I press the on/off button.	The appliance is still attached to the wall socket. For safety reasons, the appliance can only be used without charging cord.	Unplug the appliance and press the on/off button to switch on the appliance.
	The rechargeable battery is empty.	Recharge the battery.
	The travel lock is activated.	Press the on/off button for 3 seconds to deactivate the travel lock.
	The shaving unit is soiled or damaged to such an extent that the motor cannot run.	Clean the shaving heads thoroughly or replace them.
The appliance does not shave as well as it used to.	The shaving heads are damaged or worn.	Replace the shaving heads.
	Hairs or dirt obstruct the shaving heads.	Clean the shaving heads in the regular way or clean them thoroughly.
I replaced the shaving heads, but the replacement reminder is still showing.	You have not reset the replacement reminder.	To reset the replacement reminder, press and hold the on/off button for more than 7 seconds.
A shaving head symbol has suddenly appeared on the display.	This symbol is the replacement reminder.	Replace the shaving heads.

Problem	Possible cause	Solution
Water is leaking from the bottom of the appliance.	During cleaning, water may collect between the inner body and the outer shell of the appliance.	This is normal and not dangerous because all electronics are enclosed in a sealed power unit inside the appliance.



## 基本说明

- 1 剃须刀头部件保护盖
- 2 卡入式剃须刀头部件
- 3 释放按钮
- 4 开/关按钮
- 5 手柄
- 6 清洗提示
- 7 更换提醒
- 8 旅行锁指示灯
- 9 “不要接电源使用”指示灯
- 10 电池充电指示灯（3 级指示）
- 11 小插头插座
- 12 小插头
- 13 电源部件

## 简介

感谢您的惠顾，很高兴您选择飞利浦！为了让您能充分享受飞利浦提供的支持，请在 [www.philips.com/welcome](http://www.philips.com/welcome) 上注册您的产品。

## 重要安全信息

使用本产品及其附件之前，请仔细阅读本重要信息，并妥善保管以供日后参考。随附的附件可能因产品而异。

## 危险



- 保持电源部件干燥。
- 警告符号注释：禁止在打开的水龙头下进行清洗。

## 警告

- 要给电池充电，请仅使用产品随附的可拆卸电源部件 (HQ8505)。
- 电源部件中包含一个变压器。请勿自行更换电源部件的插头，否则将导致严重后果。
- 本产品也可以由 8 岁或以上年龄的儿童以及肢体不健全、感觉或精神上有障碍或缺乏相关经验和知识的人士使用，但前提是有人对他们使用本产品进行监督或指导，以确保他们安全使用，并且让他们明白相关的危害。切勿让儿童玩弄本产品。不要让儿童在无人监督的情况下对本产品进行清洁和保养。
- 将剃须刀手持部分与电源软线分开后，才能在水龙头下清洗手持部分。
- 使用前，请务必检查产品。请勿使用损坏的产品，否则可能对人体造成伤害。请务必用原装型号更换损坏的部件。
- 切勿拆开本产品更换充电电池。

## 警告

- 切勿使用温度高于 60° C 的热水冲洗剃须刀。
- 只能将本产品用于用户手册中所示的原定用途。
- 出于卫生的目的，本产品只能供一个人使用。
- 切勿使用压缩气体、钢丝绒、研磨性清洁剂或腐蚀性液体（例如汽油或丙酮）来清洁产品。
- 冲洗剃须刀时，水可能从产品底部的插口漏出。这是正常的，而且没有危险，因为所有电子元件都封闭在剃须刀内部的密封电源部件中。
- 请勿在包含电动空气清新器的墙壁插座上或其周围使用电源部件，以免电源部件受到不可修复的损坏。

## 电磁场 (EMF)

本 Philips 产品符合所有有关暴露于电磁场的适用标准和法规。

## 概述

- 符号注释：适合于在洗澡或淋浴时使用。允许在盛水的浴缸、淋浴、洗脸盆或其他器皿附近使用本器具。

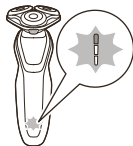


- 该剃须刀具有防水性能。适合在沐浴或淋浴时使用，也可以放在水龙头下清洗。出于安全原因，该剃须刀在使用时不能连接电线。
- 电源部件适合在 100 - 240 伏的电源电压下工作。
- 该电源部件可将 100-240 伏的电压转换为 24 伏以下的安全低电压。

## 显示屏 充电

注意：充电期间按开/关按钮，“拔出插头即可使用”符号会呈白色闪烁，提醒您需断开产品与电源插座的连接。

快速充电：电池电量耗尽后，当您将产品连接到电源插座时，电池充电指示灯将逐个亮起并重复循环。产品包含的电量足够完成一次剃须时，底部的电池充电指示灯开始缓慢闪烁。



产品如果继续充电，底部的电池充电指示灯先是闪烁，然后持续亮起。然后，第二个指示灯闪烁，之后持续亮起，以此类推，直至本产品充满电。

## 电池已完全充满

注意：电池充满电后，显示屏会在 30 分钟后自动关闭。

注意：本产品只能在不接电源的情况下使用。



电池充满电后，所有电池充电指示灯都将呈白色持续亮起。

### 电池电量不足



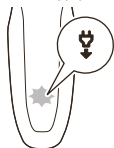
当电池电量几乎耗尽时，电池充电指示灯的底灯会呈橙色闪烁。

### 电池剩余电量



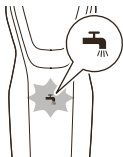
剩余的电池电量由持续亮起的充电指示灯来表示。

### “拔出插头即可使用”提示



“拔出插头即可使用”符号闪烁，提醒您应先断开产品与电源插座的连接后才能打开本产品。

## 清洗提示



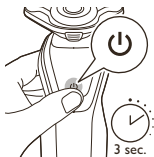
每次使用后请清洁剃须刀，以获得出色性能。关闭产品时，清洗提示符号闪烁，提醒您需要清洁产品。

## 旅行锁



您可以在携带本产品旅行之前将其锁住。旅行锁可防止本产品被意外启动。

## 启用旅行锁



- 1 按住开/关按钮 3 秒钟以进入旅行锁模式。



启用旅行锁后，旅行锁符号会持续亮起。旅行锁启用后，旅行锁符号将闪烁。

如果在旅行锁处于激活状态下尝试打开剃须刀，旅行锁符号将闪烁。

## 解除旅行锁

- 1 按开/关按钮 3 秒钟。



禁用旅行锁后，旅行锁符号会短暂亮起且剃须刀会发出短促声音。剃须刀打开后即可供再次使用。

## 更换提示



为获得更好剃须效果，建议每两年更换一次剃须刀头。本产品配有更换提示，它会提醒您更换剃须刀头。剃须刀头部件符号和箭头亮起，表示需要更换剃须刀头 (请参见 '更换剃须刀头')。

**注意：** 更换剃须刀头后，您需要通过按开/关按钮 7 秒来重置更换提醒。

## 充电

首次使用剃须刀之前，或当显示屏指示电池电量几乎耗尽时，请先为剃须刀充电。充电约需 1 小时。产品充满电后，可持续工作 70 分钟。

**注意：** 不能在充电时使用本产品。

## 使用电源部件充电



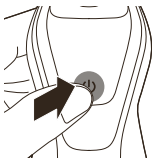
- 1 确保产品电源已关闭。
- 2 将小插头插入本产品，然后将电源部件插入电源插座。
- 3 充电之后，从电源插座上拔下电源部件，并从本产品上拔下小插头。

注意： 电池充满电后，显示屏会在 30 分钟后自动关闭。

## 使用本产品

注意： 本产品只能在不接电源的情况下使用。

### 打开或关闭产品



- 1 要打开本产品，请按一下开/关按钮。
- 2 要关闭产品，请按一下开/关按钮。

电池充电指示灯（3 级指示）： 显示屏将亮起几秒钟时间，以显示电池剩余电量状态。

### 剃须

#### 皮肤适应期

前几次剃须可能不会带给您预期效果，并且您的皮肤可能会受到轻度刺激。这是正常的。您的皮肤和胡须需要时间适应任何新的剃须系统。为了让您的皮肤适应这款新产品，我们建议您在 3 周时间内定期（至少每周 3 次）仅使用本产品剃须。

#### 干剃

- 1 启动产品。
- 2 让剃须刀头在您的皮肤上作迂回运动，以刮剃向不同方向生长的所有须发。轻轻按压，以获取舒适贴面的剃须感受。





注意：不要用力按压剃须刀，这样做可能会导致皮肤疼痛。

### 3 使用后要清洁本产品。

#### 湿剃

要获得更舒适的剃须体验，您也可以先用剃须泡沫或剃须**啫喱**将脸弄湿，然后再用本产品进行剃须。

要用剃须泡沫或剃须**啫喱**剃须，请按照下面的步骤执行操作：

#### 1 用水润湿皮肤。



#### 2 在皮肤上涂抹剃须泡沫或剃须**啫喱**。



#### 3 在水龙头下冲洗一下剃须刀头部件，确保剃须刀头部件可以在您的皮肤上顺畅滑动。



#### 4 启动产品。



- 5 让剃须刀头在您的皮肤上作迂回运动，以刮剃向不同方向生长的所有须发。轻轻按压，以获取舒适贴面的剃须感受。

注意：不要用力按压剃须刀，这样做可能会导致皮肤疼痛。

注意：定期冲洗剃须刀头部件，确保其能够继续在您的皮肤上顺畅滑动。

- 6 擦干面部。
- 7 使用后要清洁本产品。

注意：确保冲洗干净本产品上的所有泡沫或剃须啫喱。

## 使用卡入式附件

注意：随附的附件可能因产品而异。包装盒上会显示随附于您产品的附件。

### 拆卸或安装卡入式附件

- 1 确保产品电源已关闭。
- 2 将附件竖直抽离产品。

注意：将附件从产品上抽出时，不要旋转。



- 3 将附件的凸缘插入本产品顶部的槽内。然后，按下附件将其安装到本产品上（可听到“咔哒”一声）。

## 清洁和保养

注意：随附的附件可能因产品而异。包装盒上会显示随附于您产品的附件。

### 在水龙头下冲洗剃须刀

每次使用后请清洁剃须刀，以获得出色性能。

使用热水要当心。切记先检查水温是否太高，以防烫手。

不要用毛巾或纸巾擦拭剃须刀头部件，因为这样可能会损坏剃须刀头。

冲洗剃须刀头部件时，水可能会从剃须刀底座中滴出。这属于正常现象。

- 1 启动产品。
- 2 用温水冲洗剃须刀头部件。



- 3 关闭产品。按下释放按钮，打开剃须刀头部件。





4 在水龙头下冲洗胡茬储藏室。



5 用温水冲洗剃须刀头支架。

6 小心地甩掉多余水分并彻底晾干剃须刀头支架。



7 合上剃须刀头支架（可听到“咔哒”一声）。

## 存放

建议您将产品及其配件晾干后再将保护盖放在配件上，或将剃须刀存放在收纳袋中。

**注意：** 随附的附件可能因产品而异。包装盒上会显示随附于您产品的附件。



将保护盖盖在剃须刀上，以防积聚灰尘。

## 更换

### 更换剃须刀头



为获得更好剃须效果，建议每两年更换一次剃须刀头。立即更换损坏的剃须刀头。务必使用原装飞利浦剃须刀头 (请参见 '订购配件') 进行更换。

### 更换提醒

更换提醒表示需要更换剃须刀头。关闭产品时，剃须刀头部件符号和箭头亮起。



1 关闭产品。

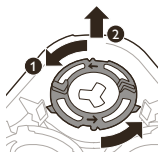
2 按下释放按钮，打开剃须刀头部件。



3 将剃须刀头支架从剃须刀头部件的底部抽离。

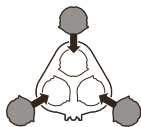


4 逆时针旋转固定环并将其取下。将其存放在安全的地方。

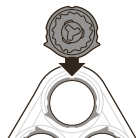




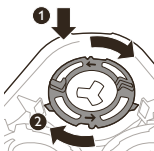
- 5 从剃须刀头支架上卸下剃须刀头。  
立即丢弃用过的剃须刀头，以免与新的剃须刀头混淆。



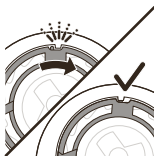
- 6 将新的剃须刀头装到剃须刀头支架中。



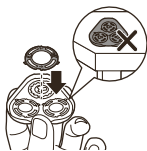
注意：确保剃须刀头的凸缘正好装入剃须刀头支架的凹槽。



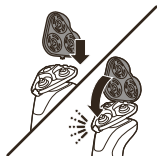
- 7 将固定环放回剃须刀头上，然后顺时针旋转以重新安装固定环。  
各固定环均具有两个凹槽和两个凸缘，正好装入剃须刀头支架的凸缘和凹槽内。



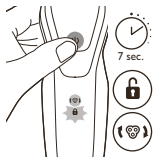
- 顺时针旋转固定环，直至听到“咔哒”一声，表明固定环已就位。



注意：当您重新插入剃须刀头并重新安装固定环时，请将剃须刀头支架握在手中。切勿将剃须刀头支架放在平面上，否则可能会损坏剃须刀头。



- 8 将剃须刀头支架的铰链重新卡入剃须刀头部件的槽内。合上剃须刀头支架（可听到“咔哒”一声）。



- 9 要重置更换提醒，请按住开/关按钮约 7 秒钟。

## 订购配件

如需购买附件或备件，请访问 [www.philips.com/parts-and-accessories](http://www.philips.com/parts-and-accessories) 或联系您的飞利浦经销商。您还可以联系所在国家/地区的飞利浦客户服务中心（请参阅保修卡了解详细联系信息）。

可选配以下附件和备件：

- SH50 飞利浦剃须刀头
- HQ110 飞利浦剃须刀头清洁喷雾剂
- RQ111 飞利浦胡须造型器附件
- RQ585 飞利浦洁面刷附件
- RQ560、RQ563 飞利浦洁面刷头

- JC301、JC302、JC303、JC304、JC305 清洁滤芯
- HQ8505 电源部件

注意：配件可用性可能因国家/地区而异。

## 回收



- 此符号表示该产品不能与一般的生活垃圾一同处理 (2012/19/EU)。



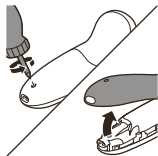
- 此符号表示该产品含有一个内置的充电电池，该电池不能与一般生活垃圾 (2006/66/EC) 一同丢弃。请您将产品送到官方收集中心或飞利浦服务中心，请专业人士移除充电电池。
- 遵循您的国家/地区有关分类回收电子电气产品和充电电池的规定。正确弃置产品有助于避免对环境和人类健康造成不良后果。

## 卸下剃须刀的充电电池

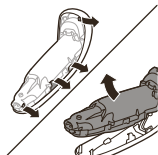
在废弃器具前，必须将电池从器具中取出。卸下电池之前，请确保本产品与电源断开连接并且电池电量已耗尽。

当您使用工具打开本产品时，请采取必要的安全保护措施。

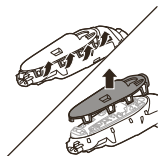


**注意，电池带非常锋利。**

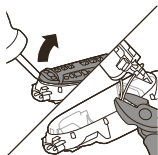
- 1 卸下剃须刀背面的螺钉。
- 2 拆除后面板。



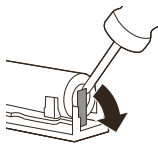
- 3 取出电源部件。



- 4 将安全钩向外掰，取下电源部件的透明保护盖。



- 5 拉出电池舱，用一把钢丝钳或剪刀将电线剪断。



- 6 用钢丝钳或螺丝刀将电池挡片向外掰。
- 7 卸下充电电池。

产品中有害物质的名称及含量						
部件名称	有害物质					
	铅 (Pb)	汞 (Hg)	镉 (Cd)	六价铬 (Cr (VI) )	多溴联苯 (PBB)	多溴二苯醚 (PBDE)
PCB's 集成电路板	X	O	O	O	O	O
Electrical contact pins 电接触片	X	O	O	O	O	O
Power plug 电源插头	X	O	O	O	O	O
Internal metal parts 内部金属件	X	O	O	O	O	O
本表格依据SJ/T 11364的规定编制。						
O: 表示该有害物质在该部件所有均质材料中的含量均在GB/T 26572规定的限量要求以下。						
X: 表示该有害物质至少在该部件的某一均质材料中的含量超出GB/T 26572规定的限量要求。						

- 该表格中所显示的“有害物质”在产品正常使用情况下不会对人身和环境产生任何伤害。
- 该表格中所显示的“有害物质”及其存在的部件向消费者和回收处理从业者提供相关物质的存在信息，有助于产品废弃时的妥善处理。

## 保修和支持

如需信息或支持，请访问  
[www.philips.com/support](http://www.philips.com/support) 或阅读保修卡。

## 保修条款

由于剃须刀头（刀片和网罩）属于易磨损物品，因此不在国际保修条款的涵盖范围之列。

## 故障种类和处理方法

本章归纳了使用本产品时最常见的一些问题。如果您无法根据以下信息解决问题，请访问 [www.philips.com/support](http://www.philips.com/support) 查阅常见问题列表，或联系您所在国家/地区的客户服务中心。

### 剃须刀

问题	可能的原因	解决方法
按下开/关按钮时，产品不工作。	本产品仍然连接着电源插座。出于安全原因，本产品在使用时不能连接充电线。	拔掉产品插头并按开/关按钮打开产品。
	充电电池的电量已耗尽。	给电池充电。
	旅行锁已被激活。	按住开/关按钮 3 秒钟以禁用旅行锁。
	剃须刀头部件被污染或损坏，导致马达无法运行。	彻底清洁剃须刀头或将其更换。有关如何彻底清洗剃须刀头的详细说明，另请参阅“毛发或污垢堵塞了剃须刀头”。
产品的剃须效果没有以前好。	剃须刀头已损坏或磨损。	更换剃须刀头。
	毛发或污垢堵塞了剃须刀头。	对剃须刀头进行常规式或彻底清洁。

问题	可能的原因	解决方法
我更换了剃须刀头，但仍然显示更换提醒。	您尚未重置更换提示。	要重置更换提醒，请按住开/关按钮 7 秒以上。
显示屏上突然出现剃须刀头符号。	此符号是更换提醒。	更换剃须刀头。
水从产品底部漏出。	在清洁过程中，水可能聚集在产品的机身内部与外壳之间。	这是正常现象，而且没有危险，因为所有电子元件都封闭在产品内部的密封电源部件中。

## PHILIPS

产品：飞利浦电动剃须刀  
 型号：S5951  
 额定电压：220V~  
 额定频率：50Hz  
 额定输入功率：9W  
 生产日期：请见产品本体  
 产地：中国广东珠海

IPX4



珠海经济特区飞利浦家庭电器有限公司  
 中国珠海市三灶镇琴石工业区  
 全国顾客服务热线: 4008 800 008

本产品根据国标 GB4706.1-2005,  
 GB4706.9-2008制造

保留备用

发行日期: 8/7/2019

© 2019 Koninklijke Philips N.V.

All rights reserved

保留所有权利

3000.037.0289.1 (8/7/2019)

> 75% 循环再造纸

保留备用



>75 % recycled paper

>75 % papier recyclé