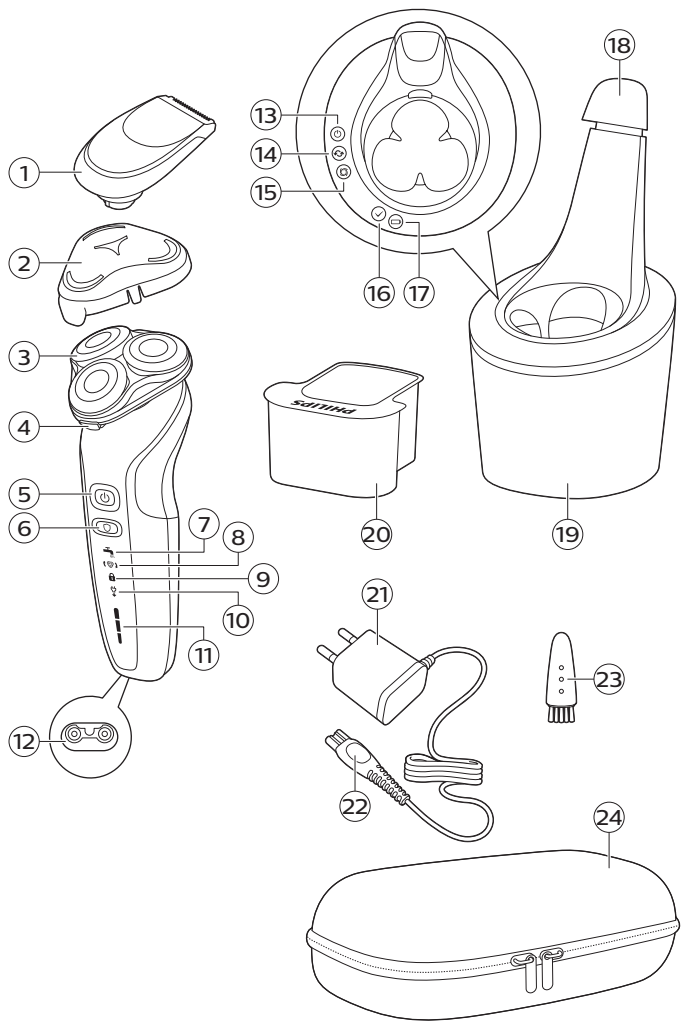


**PHILIPS**

S6840, S6580,  
S6550









**English 6**

简体中文 **34**

## General description (Fig. 1)

- 1 Precision trimmer
- 2 Protection cap
- 3 Click-on shaving unit
- 4 Shaving head holder release button
- 5 On/off button (shaver)
- 6 Guard mode button
- 7 Cleaning reminder
- 8 Replacement reminder
- 9 Travel lock symbol
- 10 'Unplug for use' reminder
- 11 Battery charge indicator
- 12 Socket for small plug
- 13 On/off button (SmartClean)
- 14 Cleaning cartridge replacement symbol
- 15 Cleaning symbol
- 16 Ready symbol
- 17 Charging symbol
- 18 SmartClean system cap
- 19 SmartClean system
- 20 Cleaning cartridge for SmartClean system
- 21 Supply unit
- 22 Small plug
- 23 Cleaning brush
- 24 Pouch

The accessories supplied may vary for different products. The box shows the accessories that have been supplied with your appliance.

## Introduction

Congratulations on your purchase and welcome to Philips! To fully benefit from the support that Philips offers, register your product at **[www.philips.com/welcome](http://www.philips.com/welcome)**.

Please read this user manual, as it contains information about the features of this shaver as

well as some tips to make shaving easier and more enjoyable.

## Important safety information

Read this important information carefully before you use the appliance and save it for future reference.

### Danger



- Keep the supply unit dry.

### Warning

- To charge the battery, only use the detachable supply unit (HQ8505) provided with the appliance.
- The supply unit contains a transformer. Do not cut off the supply unit to replace it with another plug, as this causes a hazardous situation.
- This appliance can be used by children aged from 8 years and above and persons with reduced physical, sensory or mental capabilities or lack of experience and knowledge if they have been given supervision or instruction concerning use of the appliance in a safe way and understand the hazards involved. Children shall not play with the appliance. Cleaning and user maintenance shall not be made by children without supervision.
- Always unplug the shaver before you clean it under the tap.

- Always check the appliance before you use it. Do not use the appliance if it is damaged, as this may cause injury. Always replace a damaged part with one of the original type.
- Do not open the appliance to replace the rechargeable battery.

## Caution



- Never immerse the cleaning system or the charging stand in water and do not rinse it under the tap.
- Never use water hotter than 60°C to rinse the shaver.
- Only use this appliance for its intended purpose as shown in the user manual.
- For hygienic reasons, the appliance should only be used by one person.
- Never use compressed air, scouring pads, abrasive cleaning agents or aggressive liquids such as petrol or acetone to clean the appliance.
- If your shaver comes with a cleaning system, always use the original Philips cleaning fluid (cartridge or bottle, depending on the type of cleaning system).
- Always place the cleaning system on a stable, level and horizontal surface to prevent leakage.
- If your cleaning system uses a cleaning cartridge, always make sure the cartridge compartment is closed before you use the cleaning system to clean or charge the shaver.
- When the cleaning system is ready for use, do not move it to prevent leakage of cleaning fluid.
- Water may drip from the socket at the bottom of the shaver when you rinse it. This is normal and not dangerous because all electronics are enclosed in a sealed power unit inside the shaver.



- Do not use the supply unit in or near wall sockets that contain an electric air freshener to prevent irreparable damage to the supply unit.

## Electromagnetic fields (EMF)

This Philips appliance complies with all applicable standards and regulations regarding exposure to electromagnetic fields.

## General



- This shaver is waterproof. It is suitable for use in the bath or shower and for cleaning under the tap. For safety reasons, the shaver can therefore only be used without cord.
- The supply unit is suitable for mains voltages ranging from 100 to 240 volts.
- The supply unit transforms 100-240 volts to a safe low voltage of less than 24 volts.

## The display

### Battery charge indicator

Quick charge: When the battery is empty and you connect the shaver to a wall socket, the lights of the battery charge indicator light up white one after the other repeatedly. When the battery contains enough energy for one shave, the bottom light of the battery charge indicator starts flashing white slowly.



As charging continues, each light flashes and then lights up continuously to indicate to what level the battery has been charged.

## Battery fully charged



When the battery is fully charged, all lights of the battery charge indicator light up white continuously.



Note: When you press the on/off button while the shaver is still connected to the wall socket, the 'unplug for use' symbol lights up to remind you to disconnect the shaver from the wall socket before you can switch it on.

Note: When the battery is full, the display switches off automatically after 30 minutes.

## Battery low



When the battery is almost empty, the bottom light of the battery charge indicator flashes orange. At this point there is enough energy left for one shave.

## Remaining battery charge



The remaining battery charge is indicated by the lights of the battery charge indicator that light up continuously.

## 'Unplug for use' reminder



The 'unplug for use' symbol flashes to remind you to disconnect the shaver from the wall socket before you can switch it on.

## Travel lock



When you are going to travel, you can lock the shaver to prevent it from accidentally turning on (see 'Activating the travel lock').

## Replacement reminder



For maximum shaving performance, we advise you to replace the shaving heads every two years. The shaver is equipped with a replacement reminder which flashes to remind you to replace the shaving heads.

**Note:** After replacing the shaving heads, you should reset the replacement reminder by pressing the on/off button for 7 seconds. If you do not reset the replacement reminder, the shaver resets automatically after 9 shaves.

## Cleaning reminder



Clean the shaver after every use for optimal performance (see 'Cleaning and maintenance'). When you switch off the shaver, the cleaning reminder flashes to remind you to clean the shaver.

## Guard mode



This setting lowers the rotation speed of the shaver.

## Charging

Charge the shaver before you use it for the first time and when the display indicates that the battery is almost empty.

Charging takes max. 1 hour. A fully charged shaver has a shaving time of up to 50 minutes (S6550) 60 minutes (S6580) or 70 minutes (S6840).

**Note:** You cannot use the shaver while it is charging.

## Quick charge

After approx. 3 minutes of charging, the shaver contains enough power for one shave. The bottom light of the battery charge indicator starts flashing white slowly when the quick charge is finished.

## Charging with the supply unit

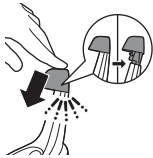


- 1 Make sure the shaver is switched off.
- 2 Put the small plug in the shaver and put the supply unit in the wall socket.

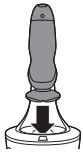
The display of the shaver indicates that the shaver is charging.

- 3 After charging, remove the supply unit from the wall socket and pull the small plug out of the shaver.

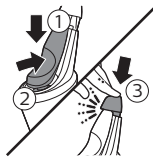
## Charging in the SmartClean system (specific types only)



- 1 Put the small plug in the back of the SmartClean system.
- 2 Put the supply unit in the wall socket.
- 3 Press to open the SmartClean system cap, to be able to place the shaver in the holder ('click').



- 4 Hold the shaver upside down above the holder. Make sure the front of the shaver points towards the SmartClean system holder.



- 5 Place the shaver in the holder, tilt the shaver backwards and press down the SmartClean system cap to connect the shaver ('click').

The battery symbol starts to flash to indicate that the appliance is charging. When the battery is fully charged, the battery symbol lights up continuously.

## Using the shaver

**Always check the shaver and all accessories before use. Do not use the shaver or any accessory if it is damaged, as this may cause injury. Always replace a damaged part with one of the original type.**

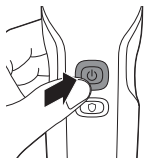


This symbol indicates that the shaver can be used in the bath or shower.

- Use this shaver for its intended household use as described in this manual.
- For hygienic reasons, the shaver should only be used by one person.
- Trimming is easier when the skin and hair are dry.
- Do not place the SmartClean near water and make sure it does not get wet.

**Note:** This shaver is waterproof. It is suitable for use in the bath or shower and for cleaning under the tap. For safety reasons, the shaver can therefore only be used without charging cord.

## Switching the shaver on and off



- 1 To switch the shaver on or off, press the on/off button once.

The display lights up for a few seconds to show the battery status.

## Shaving

### Skin adaptation period

Your first shaves may not bring you the result you expect and your skin may even become slightly irritated. This is normal. Your skin and beard need time to adapt to any new shaving system. To allow your skin to adapt to this new appliance, we advise you to shave regularly (at least 3 times a week) and exclusively with this appliance for a period of 3 weeks.

## Shaving tips

- For the best results on skin comfort, pre-trim your beard if you have not shaved for 3 days or longer.

### Guard mode

- Activate the guard mode to adjust to a lower rotational speed for a more gentle shave.

## Dry shaving

- 1 Switch on the shaver.
- 2 Move the shaving heads over your skin in circular movements to catch all hairs growing in different directions. Make sure each shaving head is fully in contact with the skin. Exert gentle pressure for a close, comfortable shave.

Note: Do not press too hard, as this can cause skin irritation.

- 3 Switch off and clean the shaver after each use.

## Wet shaving

For a more comfortable shave, you can also use this shaver on a wet face with shaving foam or shaving gel.

- 1 Apply some water to your skin.



- 2 Apply shaving foam or shaving gel to your skin.



## 16 English



- 3 Rinse the shaving unit under the tap to ensure that the shaving unit glides smoothly over your skin.
- 4 Switch on the shaver.
- 5 Move the shaving heads over your skin in circular movements to catch all hairs growing in different directions. Make sure each shaving head is fully in contact with the skin. Exert gentle pressure for a close, comfortable shave.

Note: Do not press too hard, this can cause skin irritation.

Note: Rinse the shaving unit regularly to ensure that it continues to glide smoothly over your skin.

- 6 Switch off and clean the shaver after each use.
- 7 Dry your face.

Note: Make sure that you rinse all foam or shaving gel off the shaver.

### Shaving with guard mode



- 1 Switch on the shaver.
- 2 Press the guard button once if you want to shave at a lower speed.
- 3 Move the shaving heads over your skin in circular movements to catch all hairs growing in different directions. Make sure each shaving head is fully in contact with the skin. Exert gentle pressure for a close, comfortable shave.
- 4 Switch off the guard mode by pressing the guard button once.

Note: The shaver automatically starts operating at normal speed when you switch it on again.



## Using click-on attachments

### Removing or attaching click-on attachments



- 1 Make sure the shaver is switched off.
- 2 Pull the attachment straight off the appliance.

Note: Do not twist the attachment while you pull it off the appliance.



- 3 Insert the lug of the attachment into the slot in the top of the appliance. Then press down the attachment to attach it to the appliance ('click').

### Using the precision trimmer attachment

You can use the precision trimmer attachment to touch up your beard, sideburns and moustache.



- 1 Attach the attachment to the appliance ('click').
- 2 Switch on the appliance.

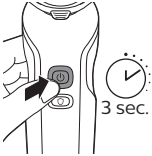


- 3 Hold the precision trimmer perpendicular to the skin and move it downwards while exerting gentle pressure.
- 4 Switch off the appliance and clean the attachment after use.

### Travel lock

You can lock the shaver when you are going to travel to prevent it from turning on accidentally.

## Activating the travel lock



- 1 Press the on/off button for 3 seconds to enter the travel lock mode.



While you activate the travel lock, the indications on the display light up briefly. When the travel lock is activated, the travel lock symbol flashes.

## Deactivating the travel lock



- 1 Press the on/off button for 3 seconds. While you deactivate the travel lock, the indications on the display light up briefly. The shaver switches on and is now ready for use again.

Note: The shaver unlocks automatically when it is connected to a wall socket.

## Cleaning and maintenance

### Cleaning the shaver under the tap

Clean the shaver after every shave for optimal performance.

**Be careful with hot water. Always check if the water is not too hot, to prevent burning your hands.**

**Never dry the shaving unit with a towel or tissue, as this may damage the shaving heads.**

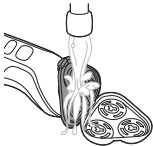
**While rinsing the shaving unit, water may drip out of the base of the shaver. This is a normal occurrence.**



- 1 Switch on the shaver.
- 2 Rinse the shaving unit under a warm tap.  
You can also clean the shaving unit with the cleaning brush supplied.



- 3 Switch off the shaver. Press the release button to open the shaving unit.



- 4 Rinse the hair chamber under the tap.  
You can also clean the inside of the shaving unit with the cleaning brush supplied.



- 5 Rinse the shaving head holder under a warm tap.
- 6 Carefully shake off excess water and let the shaving head holder air-dry completely.



- 7 Close the shaving head holder ('click').

## Cleaning the shaver in the SmartClean system

**Keep cleaning cartridges out of reach of children. Do not take internally. Avoid contact with eyes. In case of eye contact, thoroughly**

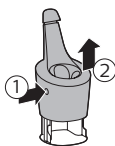
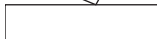
**flush with cold water. If irritation persists, get medical attention.**

- Only use the shaver, SmartClean system and cleaning cartridge provided to charge or clean the shaver.
- For optimal cleaning results, replace the cleaning cartridge every 3 months.
- Other Philips shavers may not work with this SmartClean system.
- To avoid evaporation, do not expose cleaning fluid to direct sunlight.
- The SmartClean system thoroughly cleans but does not disinfect your shaver, therefore, do not share the shaver with others.
- Place the SmartClean system on a flat, stable and fluid-resistant surface to avoid any leakage. Be careful not to tip or move the SmartClean system when it is ready for use.
- Use this product for its intended household use as described in this manual.

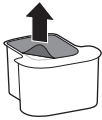
**Preparing the SmartClean system for use**

**Caution: Do not tilt the SmartClean system to prevent leakage.**

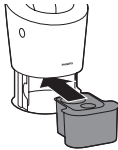
Note: Hold the SmartClean system while you prepare it for use.



- 1 Put the small plug in the back of the SmartClean system.
- 2 Put the supply unit in the wall socket.
- 3 While holding the SmartClean system with one hand, press the button on the side of the SmartClean system and lift the top part of the SmartClean system.



- 4 Pull the seal off the cleaning cartridge.



- 5 Place the cleaning cartridge in the SmartClean system.

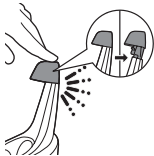
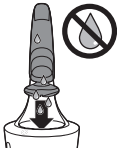


- 6 While holding the SmartClean system with one hand, gently push the top part of the SmartClean system back down ('click').

### Using the SmartClean system

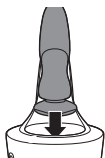
Note: If you use the shaver with shaving foam or gel, briefly rinse the shaver under a warm tap before you clean it in the SmartClean system.

**Caution: Always shake excess water off the shaver before you place it in the SmartClean system.**

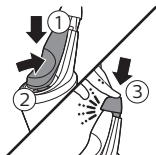


- 1 Press to open the SmartClean system cap, to be able to place the shaver in the holder ('click').

## 22 English

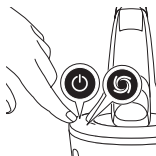


- 2 Hold the shaver upside down above the holder. Make sure the front of the shaver points towards the SmartClean system holder.



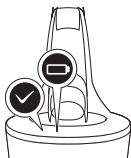
- 3 Place the shaver in the holder (1), tilt the shaver backwards (2) and press down the top cap to connect the shaver ('click') (3).

The battery symbol on the SmartClean system starts to flash, which indicates that the shaver is charging.



- 4 Press the on/off button on the SmartClean system to start the cleaning program.

During the cleaning phase, the cleaning symbol flashes. When the cleaning phase is done (after approx. 10 minutes), the cleaning symbol lights up continuously.



Next, the ready symbol lights up continuously.

30 minutes after the cleaning program and charging are done, the SmartClean system switches off automatically.

The battery symbol lights up continuously to indicate that the shaver is fully charged. Charging takes approx. 1 hour.

- 5 To let the shaver dry, you can leave it in the SmartClean system until your next shave. You can also remove the shaver from the SmartClean system, shake off excess fluid, open the shaving unit and let the shaver air-dry. Press to open the SmartClean system cap, to be able to remove the shaver from the holder ('click').

Note: If you press the on/off button of the SmartClean system during the cleaning program, the program stops. In this case, the cleaning or drying symbol goes out.

Note: If you disconnect the SmartClean system from its power supply, the cleaning program stops.

## Thorough cleaning

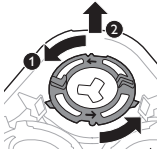
- 1 Switch off the appliance.
- 2 Press the release button to open the shaving unit.



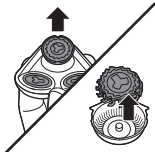
- 3 Pull the shaving head holder off the bottom part of the shaving unit.



- 4 Turn the retaining rings counterclockwise and remove them.

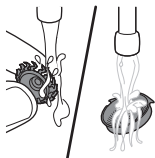


- 5 Remove the shaving heads from the shaving head holder. Each shaving head consists of a cutter and guard.



Note: Do not clean more than one cutter and guard at a time, since they are all matching sets. If you accidentally put a cutter in the wrong shaving guard, it may take several weeks before optimal shaving performance is restored.

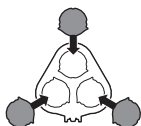
## 24 English



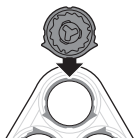
**6** Clean the cutter and guard under the tap.



**7** Put the cutter back into the guard.

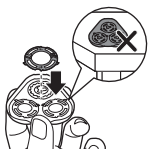


**8** Place the shaving heads in the shaving head holder.



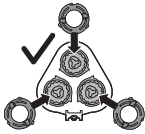
Note: Make sure that the projections of the shaving heads fit exactly into the recesses of the shaving head holder.

**9** Place the retaining rings back onto the shaving head holder and turn them clockwise ('click').

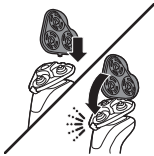


Note: Hold the shaving head holder in your hand when you reinsert the shaving heads and reattach the retaining rings. Do not place the shaving head holder on a surface when you do this, as this may cause damage.





- Each retaining ring has two recesses and two projections that fit exactly in the projections and recesses of the shaving head holder.



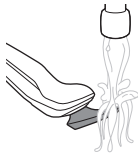
- 10 Reinsert the hinge of the shaving head holder into the slot of the shaving unit. Close the shaving head holder.

## Cleaning the precision trimmer attachment

**Never dry the precision trimmer attachment with a towel or tissue, as this may damage the trimming teeth.**

Clean the precision trimmer attachment after each use.

- 1 Switch on the appliance with the precision trimmer attachment attached.
- 2 Rinse the attachment under a warm tap.
- 3 After cleaning, switch off the appliance.
- 4 Carefully shake off excess water and let the attachment air-dry completely.



For optimal performance, lubricate the teeth of the attachment with a drop of sewing machine oil every six months.

## Replacement

### Replacing the shaving heads



For maximum shaving performance, we advise you to replace the shaving heads every two years. Replace damaged shaving heads immediately. Always replace the shaving heads with original Philips shaving heads ('Ordering accessories').

### Replacement reminder

The replacement reminder indicates that the shaving heads need to be replaced. The shaving unit symbol lights up when you switch off the shaver.



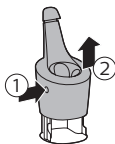
- 1 To replace the shaving heads, remove the shaving heads from the shaving head holder one by one. See chapter Thorough Cleaning for the instructions on how to remove the retaining rings and shaving heads.
- 2 To reset the replacement reminder, press and hold the on/off button for approx. 7 seconds. If you do not reset the replacement reminder, the shaver resets automatically after 9 shaves.

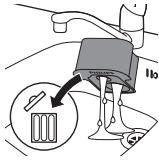


### Replacing the cartridge of the SmartClean system

Replace the cleaning cartridge when the replacement symbol flashes orange or every 3 months.

- 1 While holding the SmartClean system with one hand, press the button on the side of the SmartClean system and lift the top part of the SmartClean system.





- 2** Remove the cleaning cartridge from the SmartClean system and pour out any remaining cleaning fluid.

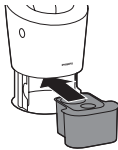
You can safely pour the cleaning fluid down the sink.

- 3** Discard the empty cleaning cartridge.

Contact your local town or city officials for recycling information.

- 4** Unpack the new cleaning cartridge and pull off the seal.

- 5** Place the cleaning cartridge in the SmartClean system.



- 6** While holding the SmartClean system with one hand, gently push the top part of the SmartClean system back down ('click').

Note: When the SmartClean system is ready for use, do not move the product to prevent leakage.

## Storage



Note: We advise you to let the appliance dry before you store it in the pouch.



Store the shaver in the pouch or attach the protection cap to the appliance (specific types only).

## Ordering accessories

To buy accessories or spare parts, visit **[www.shop.philips.com/service](http://www.shop.philips.com/service)** or go to your Philips dealer. You can also contact the Philips Consumer Care Center in your country (see the international warranty leaflet for contact details).

The following accessories are available:

- SH50 Philips shaving heads
- RQ111 Philips beard styler
- Precision trimmer
- RQ575 Philips cleansing brush
- HQ8505 supply unit

Note: The availability of the accessories may differ by country.

## Recycling

- Do not throw away the product with the normal household waste at the end of its life, but hand it in at an official collection point for recycling. By doing this, you help to preserve the environment.
- This product contains a built-in rechargeable battery which shall not be disposed of with normal household waste. Please take your product to an official collection point or a Philips service center to have a professional remove the rechargeable battery.

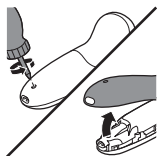
- Follow your country's rules for the separate collection of electrical and electronic products and rechargeable batteries. Correct disposal helps prevent negative consequences for the environment and human health.

## Removing the rechargeable shaver battery

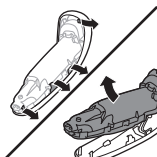
**Only remove the rechargeable battery when you discard the appliance. Before you remove the battery, make sure that the appliance is disconnected from the mains and that the battery is completely empty.**

**Take any necessary safety precautions when you handle tools to open the appliance.**

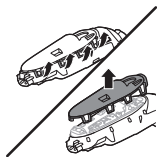
**Be careful, the battery strips are sharp.**



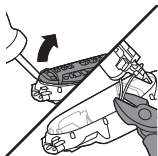
- 1 Remove the screw in the back of the shaver.
- 2 Remove the back panel.



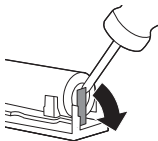
- 3 Take out the power unit.



- 4 Bend the snap hooks aside and remove the transparent cover of the power unit.



- 5 Lift out the battery holder and cut the wires with a pair of cutting pliers or scissors.



- 6 Bend the battery tags aside with a pair of cutting pliers.  
7 Remove the rechargeable batteries.

## Warranty and support

If you need information or support, please visit [www.philips.com/support](http://www.philips.com/support) or read the international warranty leaflet.

## Warranty restrictions

The shaving heads (cutters and guards) are not covered by the terms of the international warranty because they are subject to wear.

## Troubleshooting

This chapter summarizes the most common problems you could encounter with the appliance. If you are unable to solve the problem with the information below, visit [www.philips.com/support](http://www.philips.com/support) for a list of frequently asked questions or contact the Consumer Care Center in your country.

## Shaver

Problem	Possible cause	Solution
The appliance does not work when I press the on/off button.	The appliance is still attached to the wall socket. For safety reasons, the appliance can only be used without charging cord.	Unplug the appliance and press the on/off button to switch on the appliance.
	The rechargeable battery is empty.	Recharge the battery.
	The travel lock is activated.	Press the on/off button for 3 seconds to deactivate the travel lock.
	The shaving unit is soiled or damaged to such an extent that the motor cannot run.	Clean the shaving heads thoroughly (see 'Thorough cleaning') or replace them.
The appliance does not shave as well as it used to.	The shaving heads are damaged or worn.	Replace the shaving heads.
	Hairs or dirt obstruct the shaving heads.	Clean the shaving heads in the regular way or clean them thoroughly (see 'Thorough cleaning').
I replaced the shaving heads, but the replacement reminder is still showing.	You have not reset the replacement reminder.	To reset the replacement reminder, press and hold the on/off button for more than 7 seconds.
A shaving head symbol has suddenly appeared on the display.	This symbol is the replacement reminder.	Replace the shaving heads.

<b>Problem</b>	<b>Possible cause</b>	<b>Solution</b>
Water is leaking from the bottom of the appliance.	During cleaning, water may collect between the inner body and the outer shell of the appliance.	This is normal and not dangerous because all electronics are enclosed in a sealed power unit inside the appliance.

### SmartClean system

<b>Problem</b>	<b>Possible cause</b>	<b>Solution</b>
The SmartClean system does not work when I press the on/off button.	The SmartClean system is not connected to the wall socket.	Put the small plug in the SmartClean system and put the supply unit in the wall socket.
	The cleaning cartridge is empty. The replacement symbol flashes to indicate that you have to replace the cleaning cartridge.	Place a new cleaning cartridge in the SmartClean system.
The shaver is not entirely clean after I clean it in the SmartClean system.	You have not placed the shaver in the SmartClean system properly, so there is no electrical connection between the SmartClean system and the shaver.	Press down the top cap ('click') to ensure a proper connection between the shaver and the SmartClean system.



Problem	Possible cause	Solution
	The battery of the shaver is not charged sufficiently.	If the battery of the shaver is not charged sufficiently, the SmartClean system may not work properly. The shaver needs to be able to switch on briefly during the rinsing phase. Charge the shaver for a short time before you use the SmartClean system to clean your shaver.
	The cleaning cartridge needs to be replaced.	Replace the cleaning cartridge.
	You have used another cleaning fluid than the original Philips cleaning cartridge.	Only use the original Philips cleaning cartridge.
	The hole of the drain of the cleaning cartridge is blocked.	Remove the cartridge from the SmartClean system and push the hairs down the drain with a toothpick.
The shaver is not fully charged after I charge it in the SmartClean system.	You have not placed the shaver in the SmartClean system properly, so there is no electrical connection between the SmartClean system and the shaver.	Press down the top cap ('click') to ensure a proper connection between the shaver and the SmartClean system.

## 基本说明（图 1）

- 1 精确修剪器
- 2 保护盖
- 3 卡入式剃须刀头部件
- 4 剃须刀头支架释放钮
- 5 开/关按钮（剃须刀）
- 6 网罩模式按钮
- 7 清洗提示
- 8 更换提醒
- 9 旅行锁符号
- 10 “拔出插头即可使用”提醒
- 11 电池充电指示灯
- 12 小插头插座
- 13 开/关按钮（高效智能清洁）
- 14 清洁滤芯更换符号
- 15 清洁符号
- 16 准备就绪符号
- 17 充电符号
- 18 高效智能清洁系统盖
- 19 高效智能清洁系统
- 20 适用于高效智能清洁系统的清洁滤芯
- 21 电源部件
- 22 小插头
- 23 清洁刷
- 24 存储袋

随附的附件可能因产品而异。包装盒上会显示随附于您产品的附件。

## 介绍

感谢您的惠顾，欢迎光临飞利浦！为了让您能充分享受飞利浦提供的支持，请在 [www.philips.com/welcome](http://www.philips.com/welcome) 上注册您的产品。

请阅读本用户手册，手册包含有关此剃须刀各种功能的信息以及一些使用技巧，让您的剃须体验更轻松更舒适。

## 重要安全信息

使用产品之前，请仔细阅读本重要信息，并妥善保管以供日后参考。

### 危险



- 保持电源部件干燥。
- 警告符号注释：禁止在打开的水龙头下进行清洗。

### 警告

- 要给电池充电，请仅使用产品随附的可拆卸电源部件 (HQ8505)。
- 电源部件中包含一个变压器。请勿自行更换电源部件的插头，否则将导致严重后果。
- 本产品也可以由 8 岁或以上年龄的儿童以及肢体不健全、感觉或精神上有障碍或缺乏相关经验和知识的人士使用，但前提是有人对他们使用本产品进行监督或指导，以确保他们安全使用，并且让他们明白相关的危害。切勿让儿童玩弄本产品。不要让儿童在无人监督的情况下对本产品进行清洁和保养。
- 将剃须刀手持部分与电源软线分开后，才能在水龙头下清洗手持部分。
- 使用前，请务必检查产品。请勿使用损坏的产品，否则可能对人体造成伤害。请务必用原装型号更换损坏的部件。
- 切勿拆开本产品更换充电电池。

### 警告



- 切勿将清洁系统或充电座浸入水中，也不要在水龙头下冲洗。
- 警告符号注释：禁止用在打开的水龙头下进行清洗。
- 警告符号注释：禁止在打开的水龙头下进行清洗
- 切勿使用温度高于 60° C 的热水冲洗剃须刀。
- 只能将本产品用于用户手册中所示的原定用途。

- 出于卫生的目的，本产品只能供一个人使用。
- 切勿使用压缩气体、钢丝绒、研磨性清洁剂或腐蚀性液体（例如汽油或丙酮）来清洁产品。
- 如果剃须刀随附清洁系统，应始终使用原装飞利浦清洁液（滤芯或瓶，取决于清洁系统类型）。
- 清洁系统必须放在稳定、平坦的水平表面上，以防漏液。
- 如果清洁系统采用清洁滤芯，在使用清洁系统进行清洁或为剃须刀充电之前，应始终确保滤芯仓已关闭。
- 清洁系统准备就绪时，切勿移动，以免清洁液漏出。
- 冲洗剃须刀时，水可能从产品底部的插口漏出。这是正常的，而且没有危险，因为所有电子元件都封闭在剃须刀内部的密封电源部件中。
- 请勿在包含电动空气清新器的墙壁插座上或其周围使用电源部件，以免电源部件受到不可修复的损坏。

## 电磁场 (EMF)

本 Philips 产品符合所有有关暴露于电磁场的适用标准和法规。

## 概述



- 符号注释：适合于在洗澡或淋浴时使用。允许在盛水的浴缸、淋浴、洗脸盆或其他器皿附近使用本器具。
- 该剃须刀具有防水性能。适合在沐浴或淋浴时使用，也可以放在水龙头下清洗。出于安全原因，该剃须刀在使用时不能连接电线。
- 电源部件适合在 100 - 240 伏的电源电压下工作。
- 该电源部件可将 100-240 伏的电压转换为 24 伏以下的安全低电压。

## 显示屏

### 充电

**快速充电：** 电池电量耗尽后，当您剃须刀连接到电源插座时，电池充电指示灯将逐个呈白色亮起并重复循环。当电池包含的电量足够完成一次剃须时，则电池状态指示灯的底灯会开始呈白色缓慢闪烁。

在充电过程中，各个指示灯都会先闪烁，然后持续亮起，以表示电池的充电程度。



### 电池已完全充满

电池充满电后，所有电池充电指示灯都将呈白色持续亮起。



**注意：** When you press the on/off button while the shaver is still connected to the wall socket, the 'unplug for use' symbol lights up to remind you to disconnect the shaver from the wall socket before you can switch it on.

**注意：** 电池充满电后，显示屏会在 30 分钟后自动关闭。



### 电池电量不足

当电池电量几乎耗尽时，电池充电指示灯的底灯会呈橙色闪烁。此时，电池含有的电量足以完成一次剃须。



## 电池剩余电量



剩余的电池电量由持续亮起的充电指示灯来表示。

## “拔出插头即可使用”提醒



“拔出插头即可使用”符号闪烁，提醒您应先断开剃须刀与电源插座的连接再打开本产品。

## 旅行锁



您可以在携带剃须刀旅行之前将其锁住。旅行锁可防止剃须刀被意外 (请参见 '启用旅行锁') 打开。

## 更换提示



为获得更好剃须效果，建议每两年更换一次剃须刀头。剃须刀带有更换提醒功能，通过闪烁提醒您更换剃须刀头。

**注意：**更换剃须刀头后，应通过按开/关按钮 7 秒来重置更换提醒。如果未重置更换提醒，剃须刀会在剃须 9 次后自动重置。

## 清洗提示



每次剃须后请清洁剃须刀，以获得出色性能（请参见‘清洁和保养’）。关闭剃须刀时，清洗提示符号闪烁，提醒您需要清洁剃须刀。

## 网罩模式



此设置可降低剃须刀的转速。

## 充电

首次使用剃须刀之前，或当显示屏指示电池电量几乎耗尽时，请先为剃须刀充电。

充电至多需要 1 小时。完全充满电后，剃须刀的剃须时间可长达 50 分钟（S6550）60 分钟（S6580）或 70 分钟（S6840）。

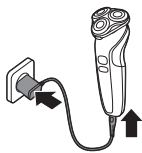
**注意：**切勿在充电时使用剃须刀。

## 快速充电

剃须刀充电约 3 分钟后所含的电量足以完成一次剃须。快速充电完成时，底部的电池充电指示灯将开始呈白色缓慢闪烁。

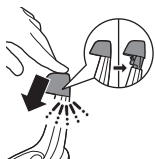
## 使用电源部件充电

- 1 确保剃须刀已关闭。

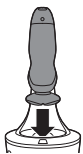


- 2 将小插头插入剃须刀，然后将电源部件插入电源插座。  
剃须刀显示屏将显示剃须刀正在充电。
- 3 充电之后，从电源插座上拔下电源部件，并从剃须刀上拔下小插头。

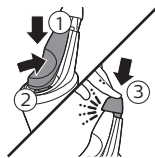
### 在高效智能清洁系统中充电（仅限于特定型号）



- 1 将小插头插入高效智能清洁系统的背面。
- 2 将电源部件插入电源插座。
- 3 按下可打开高效智能清洁系统的盖子，以便将剃须刀放入支架（可听到“咔哒”一声）。



- 4 将剃须刀倒置放在支架上方。确保剃须刀的正面朝向高效智能清洁系统的支架。



- 5 将剃须刀放入支架并向后倾斜，然后按下高效智能清洁系统的盖子以连接剃须刀（可听到“咔哒”一声）。

电池符号开始闪烁表示产品正在充电。当电池已完全充满电时，电池符号将持续亮起。

### 使用剃须刀

使用前务必要检查剃须刀和所有配件。如果剃须刀或任何配件损坏，请勿再使用，否则可能对人体造成伤害。请务必用原装型号更换损坏的部件。





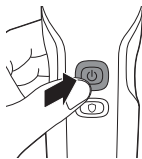
此标志表示该剃毛器可在沐浴或淋浴时使用。

符号注释：适合于在洗澡或淋浴时使用。允许在盛水的浴缸、淋浴、洗脸盆或其他器皿附近使用本器具。

- 请按照本用户手册中所述的预期家用用途使用本剃须刀。
- 出于卫生考虑，请勿共用剃须刀。
- 皮肤和毛发干燥时修剪更容易。
- 切勿将高效智能清洁系统放在有水的地方，并确保其不会弄湿。

**注意：**该剃须刀具有防水性能。适合在沐浴或淋浴时使用，也可以放在水龙头下清洗。出于安全原因，该剃须刀在使用时不能连接充电线。

## 打开或关闭剃须刀



- 1 要打开或关闭剃须刀，请按一下开/关按钮。

显示屏将亮起几秒钟时间，以显示电池状态。

## 剃须

### 皮肤适应期

前几次剃须可能不会带给您预期效果，并且您的皮肤可能会受到轻度刺激。这是正常的。您的皮肤和胡须需要时间适应任何新的剃须系统。为了让您的皮肤适应这款新产品，我们建议您在 3 周时间内定期（至少每周 3 次）仅使用本产品剃须。

### 剃须提示

如果您连续 3 天或更长时间没有剃须，为确保皮肤获得更好的舒适感，请预先修剪胡须。

#### 网罩模式

- 启动亲肤模式，优化转速，较低的转速可以保护更敏感肌肤，剃须体验更温和



### 干剃

- 1 打开剃须刀。
- 2 让剃须刀头在您的皮肤上作直线和迂回运动，以刮剃向不同方向生长的所有须发。轻轻按压，以获取舒适贴面的剃须感受。

注意：不要用力按压剃须刀，这样做可能会导致皮肤受刺激。

- 3 每次使用后，请关闭并清洗剃须刀。

### 湿剃

要获得更舒适的剃须体验，您也可以先用剃须泡沫或剃须啫喱对脸部进行湿润，然后再使用剃须刀。

- 1 用水润湿皮肤。



- 2 在皮肤上涂抹剃须泡沫或剃须啫喱。



- 3 在水龙头下冲洗一下剃须刀头部件，确保剃须刀头部件可以在您的皮肤上顺畅滑动。



- 4 打开剃须刀。

- 5 让剃须刀头在您的皮肤上作迂回运动，以刮剃向不同方向生长的所有须发。轻轻按压，以获取舒适贴面的剃须感受。

注意：不要用力按压剃须刀，这样做可能会导致皮肤受刺激。



注意：定期冲洗剃须刀头部件，确保其能够继续在您的皮肤上顺畅滑动。

- 6 每次使用后，请关闭并清洗剃须刀。
- 7 擦干面部。

注意：确保冲净剃须刀上的所有泡沫或剃须啫喱。

### 使用网罩模式剃须



- 1 打开剃须刀。
- 2 如果您想以较低速度剃须，请按一下网罩按钮。
- 3 让剃须刀头在您的皮肤上作迂回运动，以刮剃向不同方向生长的所有须发。轻轻按压，以获取舒适贴面的剃须感受。
- 4 按一下网罩按钮可关闭网罩模式。

注意：当您再次打开剃须刀时，剃须刀将自动以正常速度运行。

## 使用卡入式附件

### 拆卸或安装卡入式附件



- 1 确保剃须刀已关闭。
- 2 将附件竖直抽离产品。

注意：将附件从产品上抽出时，不要旋转。



- 3 将附件的凸缘插入本产品顶部的槽内。然后，按下附件将其安装到本产品上（可听到“咔哒”一声）。

### 使用精确修剪器附件

您可使用修剪器附件修剪鬓角和须髥。



- 1 将附件安装到产品上（可听到“咔哒”一声）。
- 2 启动产品。

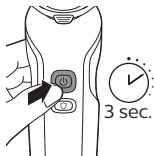


- 3 将修剪器垂直放在皮肤上，向下移动产品，同时轻轻按压。
- 4 使用后，请关闭本产品并清洁附件。

## 旅行锁

您可以在携带剃须刀旅行之前将其锁住。旅行锁可防止剃须刀被意外打开。

### 启用旅行锁



- 1 按住开/关按钮 3 秒钟以进入旅行锁模式。



当您启用旅行锁时，显示屏上的指示灯会短暂亮起。旅行锁启用后，旅行锁符号将闪烁。

### 解除旅行锁

- 1 按开/关按钮 3 秒钟。



当您解除旅行锁时，显示屏上的指示灯会短暂亮起。剃须刀打开后即可供再次使用。

**注意：**当连接到电源插座时，剃须刀会自动解锁。

## 清洁和保养

### 在水龙头下冲洗剃须刀

每次剃须后请清洁剃须刀，以获得出色性能。

**使用热水要当心。切记先检查水温是否太高，以防烫手。**

**不要用毛巾或纸巾擦拭剃须刀头部件，因为这样可能会损坏剃须刀头。**

冲洗剃须刀头部件时，水可能会从剃须刀底座中滴出。**这属于正常现象。**

- 1 打开剃须刀。
- 2 用温水冲洗剃须刀头部件。

您也可以使用随附的清洁刷清洁剃须刀头部件。



- 3 关闭剃须刀。按下释放按钮，打开剃须刀头部件。



- 4 在水龙头下冲洗胡茬储藏室。

您也可以使用随附的清洁刷清洁剃须刀头部件内部。



- 5 用温水冲洗剃须刀头支架。  
6 小心地甩掉多余水分并彻底晾干剃须刀头支架。



- 7 合上剃须刀头支架（可听到“咔哒”一声）。

## 在高效智能清洁系统中清洁剃须刀

**不要让儿童接触到清洁滤芯。请勿食用。避免与眼睛接触。如果接触到眼睛，请用冷水彻底冲洗。如果仍有不适，请就医诊治。**

- 给剃须刀充电或对其进行清洗时，仅使用随附的剃须刀、高效智能清洁系统和清洁滤芯。
- 为了获得最佳清洁效果，请每 3 个月更换一次清洁滤芯。
- 飞利浦的其他剃须刀可能不适用此高效智能清洁系统。
- 为避免蒸发，切勿将清洁剂暴露于直射的阳光下。
- 高效智能清洁系统能彻底清洗您的剃须刀，但不能消毒；因此切勿与他人共用剃须刀。
- 将高效智能清洁系统放在平整、稳定而抗有机溶剂腐蚀的表面，以避免任何溢漏。请注意，不要倾斜或移动已经准备就绪的高效智能清洁系统。
- 请按照本用户手册中所述的预期家用用途使用本产品。

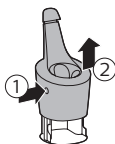
### 高效智能清洁系统使用准备

**警告：切勿倾斜高效智能清洁系统，以防溢漏。**

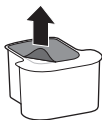
**注意：** 在准备使用高效智能清洁系统时用手握住。



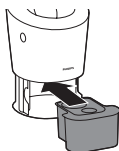
- 1 将小插头插入高效智能清洁系统的背面。
- 2 将电源部件插入电源插座。



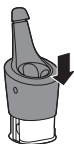
- 3 一只手抓住高效智能清洁系统，同时按高效智能清洁系统侧面的按钮，然后提起高效智能清洁系统的顶部。



- 4 将密封圈从清洁滤芯上拔下。



- 5 将清洁滤芯放置在高效智能清洁系统中。

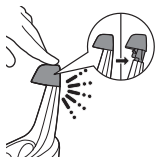


- 6 一只手抓住高效智能清洁系统，然后将高效智能清洁系统的顶部向下轻轻推回去（可听到“咔哒”一声）。

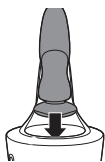
### 使用高效智能清洁系统

**注意：** 如果您在剃须时使用了剃须泡沫或啫喱，则在将剃须刀放入高效智能清洁系统清洁之前，请先使用温水冲洗片刻。

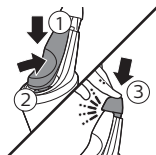
**警告：** 将剃须刀放入高效智能清洁系统之前，务必确保甩掉剃须刀上多余的水份。



- 1 按下可打开高效智能清洁系统的盖子，以便将剃须刀放入支架（可听到“咔哒”一声）。



- 2 将剃须刀倒置放在支架上方。确保剃须刀的正面朝向高效智能清洁系统的支架。



- 3 将剃须刀放在支架中 (1)，将剃须刀向后倾斜 (2)，然后按下顶盖以连接剃须刀（可听到“咔哒”一声）(3)。

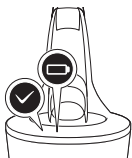
高效智能清洁系统上的电池符号开始闪烁，这表示剃须刀正在充电。



- 4 按高效智能清洁系统上的开/关按钮以启动清洁程序。

在清洁期间，清洁符号闪烁。清洁阶段完成后（约10分钟后），清洁符号会持续亮起。





接下来，准备就绪符号将持续亮起。

在执行清洁程序和充电完成 30 分钟后，高效智能清洁系统将自动关闭。

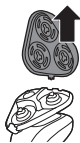
电池符号持续亮起表示剃须刀已充满电。充电约需 1 小时。

- 为使剃须刀干燥，可以将其放在高效智能清洁系统中，直至下次剃须。您也可以将剃须刀从高效智能清洁系统中取出，甩掉多余的水份，打开剃须刀头部件，让剃须刀晾干。按压以打开高效智能清洁系统盖，以便能够从支架上取下剃须刀（听到“咔哒”一声）。

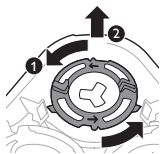
**注意：**如果在清洁程序运行期间按下高效智能清洁系统的开/关按钮，则程序将停止工作。此时，清洁或干燥符号将熄灭。

**注意：**如果断开高效智能清洁系统的电源，则清洁程序将停止工作。

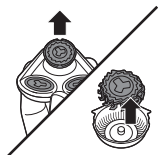
## 彻底清洁



- 关闭产品。
- 按下释放按钮，打开剃须刀头部件。
- 将剃须刀头支架从剃须刀头部件的底部抽离。

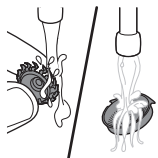


4 逆时针旋转固定环并将其取下。



5 从剃须刀头支架上卸下剃须刀头。每个剃须刀头都包括刀片和网罩。

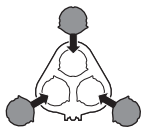
注意：不要同时清洁多组刀片和网罩，因为它们都是相互匹配的。如果不小心将刀片装到了错误的网罩上，则需要数周时间才能恢复产品的出色剃须性能。



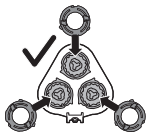
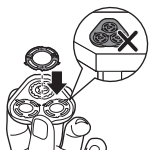
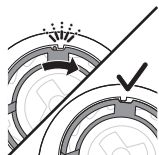
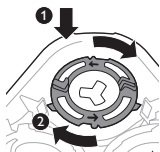
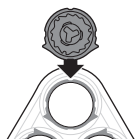
6 在水龙头下清洁刀片和网罩。



7 将刀片重新装回至网罩。



8 将剃须刀头装到剃须刀头支架中。



注意：确保剃须刀头的凸缘正好装入剃须刀头支架的凹槽。

- 9 将固定环装回剃须刀头支架并将其顺时针旋转（听到“咔哒”一声）。

注意：当您重新插入剃须刀头并重新安装固定环时，请将剃须刀头支架握在手中。当您执行此操作时，切勿将剃须刀头支架放在平面上，否则可能会造成损坏。

- 各固定环均具有两个凹槽和两个凸缘，正好装入剃须刀头支架的凸缘和凹槽内。



- 10 将剃须刀头支架的铰链重新卡入剃须刀头部件的槽内。合上剃须刀头支架。

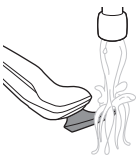
## 清洁精确修剪器附件

**切勿用毛巾或纸巾擦干精确修剪器附件，可能会损坏修剪齿。**

在每次使用后清洁精确修剪器附件。

- 1 打开装有精确修剪器附件的产品。
- 2 在温水水龙头下冲洗附件。
- 3 清洁完成后，关闭产品。
- 4 小心地甩干多余的水，然后将附件晾干。

为获得最佳效果，请每隔六个月用一滴缝纫机油润滑附件齿部。



## 更换

### 更换剃须刀头



为获得更好剃须效果，建议每两年更换一次剃须刀头。立即更换损坏的剃须刀头。务必使用原装飞利浦剃须刀头（'订购配件'）进行更换。

#### 更换提示

更换提示符号表示需要更换剃须刀头。关闭剃须刀时，剃须刀头部件符号会闪烁。

- 1 要更换剃须刀头，请将剃须刀头从剃须刀头支架上逐一卸下。有关如何拆卸固定环和剃须刀头，请参阅“彻底清洁”一章中的说明。

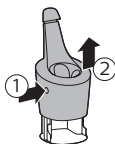




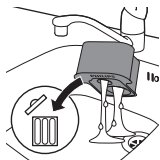
- 2 要重置更换提醒，请按住开/关按钮约 7 秒钟。如果未重置更换提醒，剃须刀会在剃须 9 次后自动重置。

## 更换高效智能清洁系统的滤芯

请在更换符号呈橙色闪烁时或每隔 3 个月更换清洁滤芯。



- 1 一只手抓住高效智能清洁系统，同时按高效智能清洁系统侧面的按钮，然后提起高效智能清洁系统的顶部。

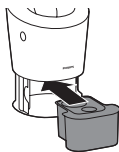


- 2 从高效智能清洁系统中取出清洁滤芯，然后将残余的所有清洁剂倒出。

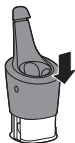
您可以安全地将清洁剂倒入水槽。

- 3 弃用空的清洁滤芯。

有关回收信息，请联系您所在的城镇或城市政府官员。



- 4 拆开新清洁滤芯的包装，然后将密封圈拔下。
- 5 将清洁滤芯放置在高效智能清洁系统中。



- 6 一只手抓住高效智能清洁系统，然后将高效智能清洁系统的顶部向下轻轻推回去（可听到“咔哒”一声）。

**注意：**当高效智能清洁系统准备就绪时，切勿移动该产品以防溢漏。

## 存放



注意：我们建议您先将产品晾干，然后再将其存放在收纳袋中。

将剃须刀存放在软袋中，或在产品上安装保护盖（仅限于特定型号）。

## 订购配件

要购买附件或备件，请访问 [www.shop.philips.com/service](http://www.shop.philips.com/service) 或联系您的飞利浦经销商。您还可以联系所在国家/地区的飞利浦客户服务中心（请参阅全球保修卡了解详细联系信息）。

可选配以下附件：

- SH50 飞利浦剃须刀头
- RQ111 飞利浦胡须造型器
- 精确修剪器
- RQ575 飞利浦洁面刷
- HQ8505 电源部件

注意：配件可用性可能因国家/地区而异。

## 回收

- 弃置本产品时，请不要将其与一般生活垃圾放在一起，应将其交给政府指定的回收中心。这样做将有利于环保。
- 此产品包含内置充电电池；请勿将充电电池与一般生活垃圾一起弃置。请您将产品送到官方收集中心或飞利浦服务中心，请专业人士移除充电电池。

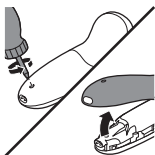
- 遵循您的国家/地区有关分类回收电子电气产品和充电电池的规定。正确弃置产品有助于避免对环境和人类健康造成不良后果。

## 卸下剃须刀的充电电池

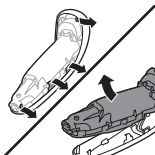
在废弃器具前，必须将电池从器具中取出；在取出电池时，器具必须要断电；电池应安全地处置。

当您使用工具打开本产品时，请采取必要的安全保护措施。

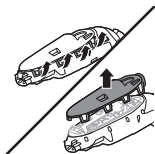
**注意，电池带非常锋利。**



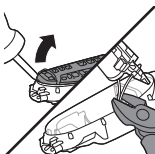
- 1 卸下剃须刀背面的螺钉。
- 2 拆除后面板。



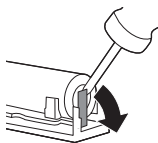
- 3 取出电源部件。



- 4 将安全钩向外掰，取下电源部件的透明保护盖。



- 5 拉出电池舱，用一把钢丝钳或剪刀将电线剪断。



6 用钢丝钳将电池标签向外掰。

7 卸下充电电池。

部件名称	产品中有害物质的名称及含量					
	铅 (Pb)	汞 (Hg)	镉 (Cd)	六价铬 (Cr (VI))	多溴联苯 (PBB)	多溴二苯醚 (PBDE)
PCB's 集成电路板	X	○	○	○	○	○
Electrical contact pins 电接触片	X	○	○	○	○	○
Power plug 电源插头	X	○	○	○	○	○
Internal metal parts 内部金属件	X	○	○	○	○	○

本表格依据SJ/T 11364的规定编制。

○: 表示该有害物质在该部件所有均质材料中的含量均在GB/T 26572规定的限量要求以下。

X: 表示该有害物质至少在该部件的某一均质材料中的含量超出GB/T 26572规定的限量要求。

- 该表格中所显示的“有害物质”在产品正常使用情况下不会对人身和环境产生任何伤害。
- 该表格中所显示的“有害物质”及其存在的部件向消费者和回收处理从业者提供相关物质的存在信息，有助于产品废弃时的妥善处理。

## 保修和支持

如需信息或支持，请访问 [www.philips.com/support](http://www.philips.com/support) 或阅读国际保修卡。

### 保修条款

由于剃须刀头（刀片和网罩）属于易磨损物品，因此在国际保修条款的涵盖范围之列。

## 故障处理方法

本章归纳了使用本产品时最常见的一些问题。如果您无法根据以下信息解决问题，请访问 [www.philips.com/support](http://www.philips.com/support) 查阅常见问题列表，或联系您所在国家/地区的客户服务中心。



## 剃须刀

问题	可能的原因	解决方法
按下开/关按钮时，产品不工作。	本产品仍然连接着电源插座。出于安全原因，本产品在使用时不能连接充电线。	拔掉产品插头并按开/关按钮打开产品。
	充电电池的电量已耗尽。	给电池充电。
	旅行锁已被激活。	按住开/关按钮 3 秒钟以禁用旅行锁。
	剃须刀头部件被污染或损坏，导致马达无法运行。	彻底清洁剃须刀头或将其更换。有关如何彻底清洗剃须刀头的详细说明，另请参阅“毛发或污垢堵塞了剃须刀头”。
产品的剃须效果没有以前好。	剃须刀头已损坏或磨损。	更换剃须刀头。
	毛发或污垢堵塞了剃须刀头。	对剃须刀头进行常规式或彻底(请参见“彻底清洁”)清洁。
我更换了剃须刀头，但仍然显示更换提醒。	您尚未重置更换提示。	要重置更换提醒，请按住开/关按钮 7 秒以上。
显示屏上突然出现剃须刀头符号。	此符号是更换提醒。	更换剃须刀头。
水从产品底部漏出。	在清洁过程中，水可能聚集在产品的机身内部与外壳之间。	这是正常现象，而且没有危险，因为所有电子元件都封闭在产品内部的密封电源部件中。

## 高效智能清洁系统

问题	可能的原因	解决方法
按下开/关按钮时，高效智能清洁系统不工作。	高效智能清洁系统未连接电源插座。	将小插头插入高效智能清洁系统，然后将电源部件插入电源插座。
	清洁滤芯是空的。更换符号闪烁表示您必须更换清洁滤芯。	将新的清洁滤芯放置在高效智能清洁系统中。
剃须刀放在高效智能清洁系统中清洁之后依然没有完全干净。	您未将剃须刀正确插接到高效智能清洁系统，因此高效智能清洁系统和剃须刀之间未通电。	按下顶盖（可听到“咔哒”一声）以确保剃须刀和高效智能清洁系统之间的连接正确无误。
	剃须刀电池的电量不足。	如果剃须刀电池的电量不足，则高效智能清洁系统无法正常工作。剃须刀需要在冲洗阶段短暂开启。使用高效智能清洁系统前，请为剃须刀充电片刻以便清洁剃须刀。
	清洁滤芯需要更换。	更换清洁滤芯。
	您使用了其他清洁剂，而不是原装飞利浦清洁滤芯。	只能使用飞利浦原装清洁滤芯。
	清洁滤芯的排水孔堵塞。	从高效智能清洁系统中取出清洁滤芯，然后用牙签推下排水孔的须发。
剃须刀在高效智能清洁系统中无法充满电。	您未将剃须刀正确插接到高效智能清洁系统，因此高效智能清洁系统和剃须刀之间未通电。	按下顶盖（可听到“咔哒”一声）以确保剃须刀和高效智能清洁系统之间的连接正确无误。

**PHILIPS**

产品：飞利浦电动剃须刀  
型号：S6550 S6580 S6840  
额定电压：220V~  
额定频率：50Hz  
额定输入功率：9W  
生产日期：请见产品本体  
产地：中国广东珠海

**IPX4**

珠海经济特区飞利浦家庭电器有限公司  
中国珠海市三灶镇琴石工业区  
全国顾客服务热线: 4008 800 008

本产品根据国标 GB4706.1-2005,  
GB4706.9-2008制造

保留备用

发行日期: 24/5/2018

— |

| —

— |

| —

— |

| —

— |

| —

— |

| —

— |

| —

Empty page before back cover

© 2018 Koninklijke Philips N.V.

All rights reserved

保留所有权利

3000.019.5104.1 (24/5/2018)

> 75% 循环再造纸



>75% recycled paper  
>75% papier recyclé