

Quick start guide

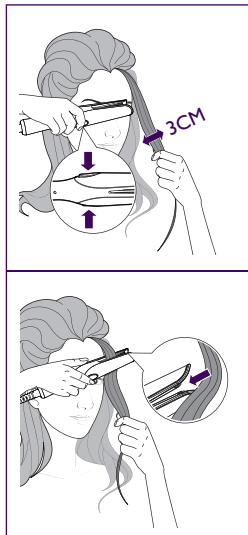
BHH777

If you want to know how to make curls, please visit
www.philips.com/curlguide

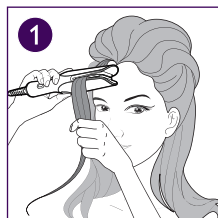
Register your product and get support at
www.philips.com/welcome

How to use

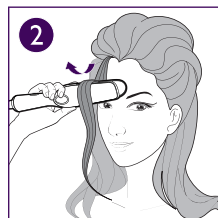
- 1 Connect the plug to a power supply socket.
- 2 Push the on/off switch upwards to turn on the appliance.
 - ↳ The power on indicator lights up.
 - ↳ The appliance will be ready for use after 30 seconds.
- 3 Press and hold the lock/unlock buttons to open the plates and select a thin hair strand **not wider than 3cm**.
- 4 Place the hair strand in between the plates and release the buttons.
 - ↳ The plates will hold the hair strand.



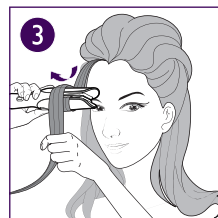
Create outward curls



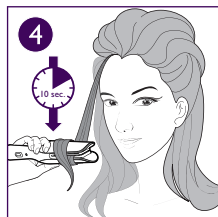
Your hair is held between the plates.



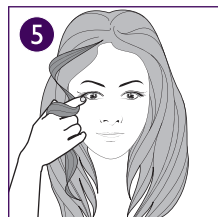
Turn the curler outwards from your face, in a 180-degree turn or half a circle.



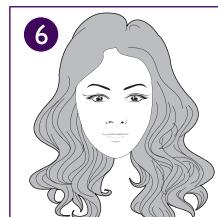
Your hair is wrapping the bottom of the curler.



Pull down the curler **slowly and continuously**, always ensuring that the curler is parallel to the floor. Ensure the hair strand is not slipping off the plates.

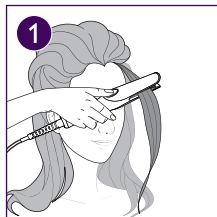


Use your fingers to hold and shape the curl before it cools down.

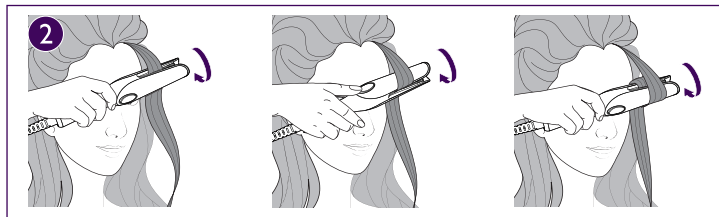


Apply hair fixation spray for a longer lasting result.

Create inward curls



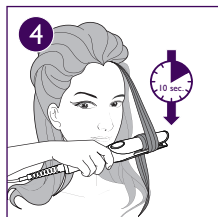
Your hair is held between the plates.



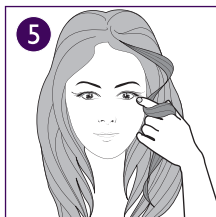
Turn the curler inwards towards your face and make a 360-degree turn or full circle. The top section of your hair should be completely wrapped around the curler.



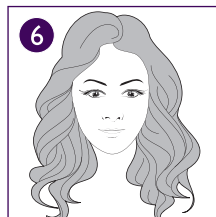
Your hair strand is fully wrapped around both sides of the curler.



Pull down the curler **slowly and continuously**. Ensure the hair strand not slipping off the plates.



Use your fingers to hold and shape the curl before it cools down.



Apply hair fixation spray for a longer lasting result.



Tips

- Do not take a section bigger than approximately 3 cm. Your hair may easily slip off the plates if too much hair is selected.
- If you want to curl your hair from the root, you may place the curler closer to your scalp.
- For more styling tips, check the user manual provided.



Specifications are subject to change without notice
© 2014 Koninklijke Philips N.V.
All rights reserved.



3140 035 40232