

PHILIPS

S529, S528,
S526



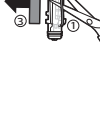
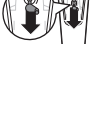
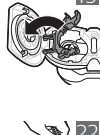
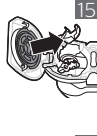
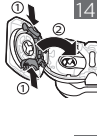
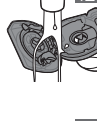
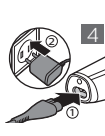
© 2018 Koninklijke Philips N.V.
All rights reserved

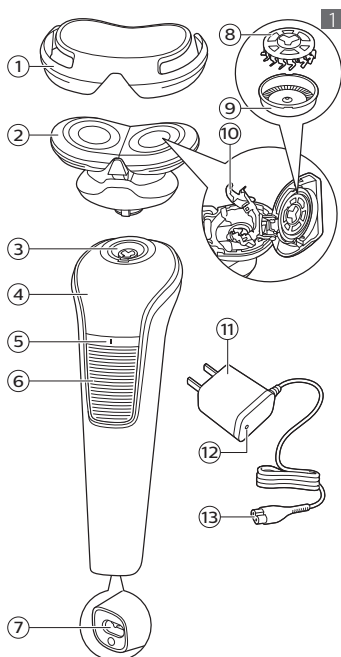
4222.002.7316.2 (19/10/2018)



>75 % recycled paper

>75 % papier recyclé





English

Congratulations on your purchase and welcome to Philips! To fully benefit from the support that Philips offers, register your product at www.philips.com/welcome.

General description (Fig. 1)

- 1 Protection cap
- 2 Shaving head holder
- 3 Shaving unit connector
- 4 Handle
- 5 On/off indication
- 6 On/off button
- 7 Socket for small plug
- 8 Cutter
- 9 Guard
- 10 Retaining frame
- 11 Supply unit
- 12 Charging light
- 13 Small plug

Not shown: cleaning brush

Important safety information

Read this important information carefully before you use the appliance and its accessories and save it for future reference. The accessories supplied may vary for different products.

Danger

- Keep the supply unit dry (Fig. 2).

Warning

- To charge the battery, only use the detachable supply unit (A00390) provided with the appliance.
- The supply unit contains a transformer. Do not cut off the supply unit to replace it with another plug, as this causes a hazardous situation.
- This appliance can be used by children aged from 8 years and above and persons with reduced physical, sensory or mental capabilities or lack of experience and knowledge if they have been given supervision or instruction concerning use of the appliance in a safe way and understand the hazards involved. Children shall not play with the appliance. Cleaning and user maintenance shall not be made by children without supervision.
- Always unplug the shaver before you clean it under the tap.
- Always check the appliance before you use it. Do not use the appliance if it is damaged, as this may cause injury. Always replace a damaged part with one of the original type.
- Do not open the appliance to replace the rechargeable battery.

Caution

- Never immerse the shaver in water. Do not use the shaver in the bath or in the shower.
- Never use water hotter than 60°C to rinse the shaver.
- Only use this appliance for its intended purpose as shown in the user manual.
- For hygienic reasons, the appliance should only be used by one person.

- Never use compressed air, scouring pads, abrasive cleaning agents or aggressive liquids such as petrol or acetone to clean the appliance.
- Water may drip from the bottom of the shaver when you rinse it. This is normal and not dangerous because all electronics are enclosed in a sealed power unit inside the shaver.
- Do not use the supply unit in or near wall sockets that contain an electric air freshener to prevent irreparable damage to the supply unit.

Electromagnetic fields (EMF)

This Philips appliance complies with all applicable standards and regulations regarding exposure to electromagnetic fields.

General

- This shaver can be safely cleaned under the tap (Fig. 3).
- The supply unit is suitable for mains voltages ranging from 100 to 240 volts.
- The supply unit transforms 100-240 volts to a safe low voltage of less than 24 volts.

Charging

Charge the appliance before first use and when the appliance start working more slowly.

Charging takes approx. 10 hours. A fully charged shaver provides up to 20 minutes of shaving time.

Charging with the supply unit

- 1 Put the small plug in the shaver.
- 2 Put the supply unit in the wall socket (Fig. 4).
 - The charging light on the supply unit lights up continuously when connected to wall socket.
 - The light on the supply unit does not change color and does not go out when the appliance is fully charged.
- 3 After charging, remove the supply unit from the wall socket and pull the small plug out of the appliance.

Using the appliance

Removing or attaching the click-on attachments

- 1 Make sure the appliance is switched off.
- 2 Insert the lug of the attachment into the slot in the top of the appliance. Then press down the attachment to attach it to the appliance ('click') (Fig. 5).
- 3 Pull the attachment straight off the appliance (Fig. 6).

Note: Do not twist the attachment while you pull it off the appliance.

Switching the appliance on and off

- 1 To switch on the appliance, slide the on/off button up (Fig. 7).
- 2 To switch off the appliance, slide the on/off button down (Fig. 8).

Shaving

Skin adaptation period

Your first shaves may not bring you the result you expect and your skin may even become slightly irritated. This is normal. Your skin and beard need time to adapt to any new shaving system. To allow your skin to adapt to this new appliance, we advise you to shave regularly (at least 3 times a week) and exclusively with this appliance for a period of 3 weeks.

Dry shaving

- 1 Switch on the appliance.
- 2 Move the shaving heads over your skin in circular movements to catch all hairs growing in different directions (Fig. 9). Make sure each shaving head is fully in contact with the skin. Exert gentle pressure for a close, comfortable shave.

Note: Do not press too hard, as this can cause skin irritation.

- 3 Clean the appliance after use (see 'Cleaning and maintenance').

Cleaning and maintenance

Cleaning the shaver under the tap

Clean the shaver after every use for optimal performance (see 'Cleaning and maintenance'). Always unplug

and switch off the shaver before you clean it.

Never use compressed air, scouring pads, abrasive cleaning agents or aggressive liquids such as petrol or acetone to clean the appliance.

Be careful with hot water. Always check if the water is not too hot, to prevent burning your hands.

Never dry the shaving unit with a towel or tissue, as this may damage the shaving heads.

- 1 Rinse the shaving unit under a warm tap.

Note: You can also clean the shaving unit with the cleaning brush supplied.

- 2 Turn the shaver up side down and rinse the openings in the bottom of the shaving head holders. Switch on the shaver briefly during rinsing (Fig. 10).
- 3 Open both shaving head holders (Fig. 11).
- 4 Rinse the hair chambers and shaving head holders under the tap (Fig. 12).
- 5 Carefully shake off excess water and let air dry completely.
- 6 Close the shaving head holders (Fig. 13).

Thorough cleaning

The shaving unit consists of two shaving heads. Clean one shaving head at a time by following the steps below.

- 1 Open the shaving head holder (Fig. 11).
- 2 To unlock the retaining frame, gently squeeze both sides of the retaining frame and flip open the frame (Fig. 14).
- 3 Remove the shaving head. Each shaving head consists of a cutter and a guard (Fig. 15).

Note: Do not clean more than one cutter and guard at a time, since they are all matching sets. If you accidentally mix up the cutters and guards, it may take several weeks before optimal shaving performance is restored.

- 4 Remove the cutter from the shaving guard (Fig. 16).
- 5 Rinse both parts with water.
- 6 After cleaning, place the cutter back into the guard with the cutter legs pointing downwards (Fig. 17).
- 7 Put the shaving head back into the shaving head holder (Fig. 18).

Note: Make sure that the shaving heads with the projections fit exactly onto the hooks of the shaving head holder when placing them (Fig. 20). The shaving heads supplied with this appliance either have notches or projections. Both shaving systems are the same.

- 8 Push the retaining frame back onto the shaving head holder until you hear a click (Fig. 19).
- 9 Close the shaving head holder (Fig. 13).

Replacement

Replacing the shaving heads

For maximum shaving performance, we advise you to replace the shaving heads every two years.

Replace damaged shaving heads immediately. Always replace the shaving heads with original Philips shaving heads (see 'Ordering accessories').

- 1 Switch off the appliance.
- 2 Open the shaving unit by opening both shaving head holders (Fig. 11).
- 3 To unlock the retaining frames, gently squeeze both sides of the retaining frames and flip open the shaving heads (Fig. 14).
- 4 Remove the shaving heads from the shaving head holders (Fig. 15).
Throw away the used shaving heads immediately to avoid mixing them with the new shaving heads.
- 5 Place the new shaving heads in the shaving head holders.

Note: Make sure that the shaving heads with the projections fit exactly onto the hooks of the shaving head holder when placing them (Fig. 20). The shaving heads supplied with this appliance either have notches or projections. Both shaving systems are the same.

- 6 Push the retaining frames back onto the shaving head holder until you hear a click (Fig. 19).

- 7 Close the shaving head holders (Fig. 13).

Storage

Always slide the protection cap onto the shaving unit to protect the shaving unit from dirt or damage during traveling or storage (Fig. 21). We advise you to let the appliance dry before you store it.

Ordering accessories

To buy accessories or spare parts, visit www.philips.com/parts-and-accessories or go to your Philips dealer. You can also contact the Philips Consumer Care Center in your country (see the international warranty leaflet for contact details).

Available parts

The following accessories and spare parts are available:

- SH30 Philips shaving heads
- HQ110 Cleaning spray
- A00390 supply unit

Note: Availability of the accessories may differ by country.

Recycling

- Do not throw away the product with the normal household waste at the end of its life, but hand it in at an official collection point for recycling. By doing this, you help to preserve the environment.
- This product contains a built-in rechargeable battery which shall not be disposed of with normal household waste. Please take your product to an official collection point or a Philips service center to have a professional remove the rechargeable battery.
- Follow your country's rules for the separate collection of electrical and electronic products and rechargeable batteries. Correct disposal helps prevent negative consequences for the environment and human health.

Removing the rechargeable battery

Only remove the rechargeable battery when you discard the shaver. Before you remove the battery, make sure that the shaver is disconnected from the mains and that the battery is completely empty.

Take any necessary safety precautions when you handle tools to open the shaver.

Be careful, the battery strips are sharp.

- 1 Disconnect the appliance from the wall socket and let the appliance run until the motor stops.
- 2 Insert a screwdriver under the edge of the upper front panel and remove it (Fig. 22).
- 3 Undo the screws in the top part of the shaver (Fig. 23).
- 4 Remove the cover in the top of the handle (Fig. 24).
- 5 Insert a screwdriver under the edge of the front panel to remove the panel and on/off button (Fig. 25).
- 6 Remove the small inner part below the on/off button (Fig. 26).
- 7 Push the inner frame out of the housing with the screwdriver (Fig. 27).
- 8 Cut the wires with pliers and remove the battery (Fig. 28).

Troubleshooting

This chapter summarizes the most common problems you could encounter with the appliance. If you are unable to solve the problem with the information below, visit www.philips.com/support for a list of frequently asked questions or contact the Consumer Care Center in your country.

Problem	Possible cause	Solution
The shaver does not work as well as it used to.	The shaving heads are damaged or worn.	Replace the shaving heads (see 'Replacement').

Problem	Possible cause	Solution
	The shaving heads are dirty.	Clean the shaving heads (see 'Cleaning and maintenance').
	Long hairs obstruct the shaving heads.	Clean the shaving heads (see 'Cleaning and maintenance').
	The rechargeable battery is low.	Switch off the shaver and recharge the battery (see 'Charging').
The shaver does not work when I switch it on.	The rechargeable battery is empty.	Switch off the shaver and recharge the battery (see 'Charging').
The shaving heads do not stay in place in the shaving unit.	You did not fix the retaining frames properly.	The retaining frames are fixed properly if you hear a click when you push it back onto the shaving heads.
	The shaving heads with projections are not placed properly.	Make sure that the shaving heads with the projections fit exactly onto the hooks of the shaving head holder when placing them (Fig. 20).

繁體中文

感謝您購買本產品。歡迎來到飛利浦的世界！為充分享受飛利浦為您提供的好處，請至下列位址註冊產品：www.philips.com/welcome。

一般說明 (圖 1)

- 1 保護蓋
- 2 電鬚刀刀頭固定座
- 3 電鬚刀組接頭
- 4 握把
- 5 開關標示
- 6 開關按鈕
- 7 小插頭插座
- 8 刀具
- 9 刀網
- 10 固定架
- 11 電源供應裝置
- 12 充電指示燈
- 13 小插頭

未顯示：清潔刷

重要安全資訊

使用本產品與其配件前，請先仔細閱讀此重要資訊，並保留說明以供日後參考。提供的配件可能隨產品而異。

危險

- 電源供應裝置請保持乾燥 (圖 2)。
- 此符號表示：禁止於自來水 (圖 2) 下清潔。

警示

- 如需為電池充電，僅可使用裝置隨附的可拆式電源供應裝置 (型號：A00390)。
- 電源供應裝置內含一個變壓器。請勿切斷電源供應裝置而以其他的插頭取代，否則會造成危險。
- 本產品可供 8 歲以上兒童、身體官能或心智能力退化者，或是經驗與使用知識缺乏者使用，但需有人從旁監督或指示如何安全使用本產品，且使用者需了解使用本產品的潛在危險。請勿讓小孩把玩本產品。若無人監督，請勿讓兒童進行清潔和使用者維護。
- 在水龍頭下沖洗電鬚刀之前，請先拔掉電鬚刀的插頭。
- 使用前請務必檢查本產品。若產品受損請勿使用，以免受傷。零件如有受損，請務必以原型號更換之。
- 請勿拆開本產品更換充電式電池。

警告

- 請勿將電鬚刀浸泡在水中。請勿在泡澡或淋浴時使用電鬚刀。
- 切勿使用超過 60°C 的熱水沖洗電鬚刀。
- 本產品儘限用於本使用手冊所述之相關用途。
- 為保衛生起見，請勿多人共用本產品。

- 絕對不可使用壓縮空氣、鋼絲絨、磨蝕性的清潔劑或侵蝕性的液體 (例如汽油或丙酮) 清潔本產品。
- 在您沖洗時，電鬚刀底部可能會滴水。此為正常現象，並不會造成危險，因為所有的電子零件都密封於電鬚刀內的供電裝置中。
- 警告符 注：禁止用在打的水頭下進行清洗。(1)

電磁波 (EMF)

本Philips產品符合所有電磁場暴露的相關適用標準和法規。

一般

- 此電鬚刀可在水龍頭下 (圖 3)安全地清洗。
- 本電源供應裝置適用於 100 到 240 伏特的插座電壓。
- 電源供應裝置可以將 100-240 伏特的電壓轉換為低於 24 伏特的安全低電壓。

充電

第一次使用本產品前以及本產品運作開始變慢時，請將產品充電。

充電時間約需 10 個小時。充飽電的電鬚刀最多可使用 20 分鐘。

使用電源供應裝置充電

- 1 將小插頭插上電鬚刀。
- 2 將電源供應裝置插入牆上插座 (圖 4)。
 - 連接至牆壁插座時，電源供應裝置上的充電指示燈會持續亮起。
 - 當產品充飽電時，電源供應裝置上的指示燈不會變色，也不會熄滅。
- 3 充電完畢請將電源供應裝置拔離電源插座，並將小插頭從產品上拔除。

使用本產品

拆下或裝上嵌入式配件

- 1 確定關閉本產品的電源。
- 2 將配件的突耳插入本產品頂端的凹槽。再將配件往下壓，即可安裝到本產品上 (會聽見「喀噠」一聲) (圖 5)。
- 3 直接從產品 (圖 6)取下配件。

注意：當您將配件從產品取下時，請勿扭轉。

開啟及關閉本產品

- 1 若要開啟本產品電源，請往上 (圖 7)推開關按鈕。
- 2 若要關閉本產品電源，請往下 (圖 8)推開關按鈕。

刮鬚

皮膚適應期

您第一次刮鬚的結果可能不如您所預期，皮膚甚至可能稍微刺痛。這是正常現象。您的皮膚與鬚鬚需要時間適應新的刮鬚系統。建議您用這把電鬚刀定期刮鬚 (每週至少 3 次) 為期 3 週，讓您的肌膚適應新的電鬚刀。

乾刮

- 1 開啟產品電源。
- 2 將電鬚刀刀頭在皮膚上以畫圓方式移動，以清除所有不同方向 (圖 9)生長的毛髮。請務必讓每個電鬚刀刀頭與皮膚完全接觸。稍微下壓，享受服貼舒適的刮鬚體驗。

注意：請勿按壓太用力，否則可能造成皮膚刺痛。

- 3 使用後需清潔本產品。

清潔與維護

將電鬚刀放在水龍頭下沖洗

為達到最佳性能 (見 '清潔與維護')，請於每回刮鬚之後清潔電鬚刀。清潔電鬚刀之前請務必將電鬚刀自插座中拔出並關閉電源。

絕對不可使用壓縮空氣、鋼絲絨、磨蝕性的清潔劑或侵蝕性的液體 (例如汽油或丙酮) 清潔本產品。

警告：使用熱水時請小心。隨時檢查熱水是否太燙，以避免手部燙傷。

切勿使用毛巾或紙巾擦乾電鬚刀組，否則可能會造成電鬚刀刀頭損壞。

- 1 將電鬚刀組以溫水沖洗。

注意：您也可以用品所附的清潔刷清潔電鬚刀組。

- 2 將電鬚刀上下顛倒，沖洗電鬚刀刀頭固定座底部的開口。在沖洗 (圖 10)期間短暫開啟電鬚刀電源。
- 3 打開兩個電鬚刀刀頭固定座 (圖 11)。
- 4 將鬚渣室及電鬚刀刀頭固定座放在水龍頭 (圖 12)下沖洗。
- 5 仔細甩乾多餘的水份之後，使其完全風乾。
- 6 關上電鬚刀刀頭固定座 (圖 13)。

徹底清潔

電鬚刀組包含兩個電鬚刀刀頭。請遵循下列步驟，一次清潔一個電鬚刀刀頭。

- 1 打開電鬚刀刀頭固定座 (圖 11)。
- 2 如欲打開固定架，請輕輕地擠壓固定架兩側，然後翻開固定架 (圖 14)。
- 3 取下刀頭。每個電鬚刀刀頭都是由刀具和刀網 (圖 15)組成。

注意：刀具及刀網是成對組合，請勿一次清潔超過一組。如果您不小心將刀具及刀網混在一起，可能要花幾週的時間才能恢復最理想的刮鬍效果。

- 4 從電鬍刀刀網 (圖 16)上取下刀片。
- 5 使用清水沖洗這兩個零件。
- 6 清潔後，請將刀片放回刀網，使刀片腳朝下 (圖 17)。
- 7 將電鬍刀刀頭裝回電鬍刀刀頭固定座 (圖 18)。

注意：確定電鬍刀刀頭的凸出部分 (圖 20)在放入電鬍刀刀頭固定座時，完全精準地嵌入固定座的鉤子。本產品隨附的電鬍刀刀頭具有溝槽或凸出部分。兩種電鬍刀系統是相同的。

- 8 將固定架放回電鬍刀刀頭固定座，直到聽見喀 (圖 19)一聲。
- 9 關上電鬍刀刀頭固定座 (圖 13)。

更換

更換電鬍刀刀頭

為達到最佳刮鬍性能，我們建議您每兩年更換一次電鬍刀刀頭。刀頭若受損，請立即更換。更換電鬍刀刀頭時，請務必使用原廠飛利浦電鬍刀刀頭 (見 '訂購配件')。

- 1 關閉產品電源。
- 2 打開兩個電鬍刀刀頭固定座 (圖 11)，以便打開電鬍刀組。
- 3 如欲打開固定架，請輕輕地擠壓固定架兩側，然後翻開電鬍刀刀頭 (圖 14)。
- 4 從電鬍刀刀頭固定座 (圖 15)上取下電鬍刀刀頭。
請立即丟棄用過的刀頭，以免與新的刀頭混用。
- 5 將新的電鬍刀刀頭裝回電鬍刀刀頭固定座。

注意：確定電鬍刀刀頭的凸出部分 (圖 20)在放入電鬍刀刀頭固定座時，完全精準地嵌入固定座的鉤子。本產品隨附的電鬍刀刀頭具有溝槽或凸出部分。兩種電鬍刀系統是相同的。

- 6 將固定架放回電鬍刀刀頭固定座，直到聽見喀 (圖 19)一聲。
- 7 關上電鬍刀刀頭固定座 (圖 13)。

存放

請務必以滑動方式蓋上電鬍刀組的保護蓋，避免電鬍刀組在旅行或收納 (圖 21)期間沾附塵土或損壞。

我們建議您待本產品乾燥後，再收納起來。

訂購配件

若要購買配件或備用零件，請造訪 www.philips.com/parts-and-accessories，或洽詢您的飛利浦經銷商。您也可以聯絡您所在國家/地區的飛利浦客戶服務中心 (詳細聯絡資料請參閱全球保固說明書)。

可用零件

備有下列配件及備用零件可供另外選購：

- SH30 飛利浦電鬍刀頭
- HQ110 噴霧清潔劑
- A00390 電源供應裝置

注意：各國家/地區供應的配件可能有所不同。

回收

- 本產品使用壽命結束時請勿與一般家庭廢棄物一併丟棄。請將該產品放置於政府指定的回收站，此舉能為環保盡一份心力。
- 本產品包含內建充電式電池，不得與一般家用廢棄物一併丟棄。請將產品攜至政府指定的回收站或飛利浦服務中心，由專業人員取出充電式電池。
- 請按照您所在國家/地區的規定，分類與回收電子電器產品及充電式電池。正確處理廢棄物有助避免對環境和人類健康的負面影響。

單元 Unit	限用物質及其化學符號					
	鉛 (Pb)	汞 (Hg)	鎘 (Cd)	六價鉻 (Cr ⁶⁺)	多溴聯苯 (PBB)	多溴二苯醚 (PBDE)
電路板 PCBs	-	○	○	○	○	○
刀片 Electrical contact pins	-	○	○	○	○	○
電源供應器 Supply unit	-	○	○	○	○	○
金屬零件 Internal metal parts	○	○	○	○	○	○

備考1. "超出0.1 wt%"及"超出0.01 wt%"係指限用物質之百分比含量超出百分比含量基準值。

備考2. "○"係指該項限用物質之百分比含量未超出百分比含量基準值。

備考3. "-"係指該項限用物質為排除項目。

取出充電式電池

請僅在棄置電鬍刀前取出充電式電池。取出電池前，請確認已拔除電鬍刀的電源插頭，且電池電力已完全耗盡。

使用工具打開電鬍刀時，請採取任何必要的安全預防措施。

電池固定帶非常銳利，請小心。

- 1 將產品從電源插座拔除，讓產品一直運作直到馬達停止。
- 2 將螺絲起子插入上方正面護板邊緣的底下，將其拆下 (圖 22)。
- 3 拆下電鬍刀 (圖 23)頂部的螺絲。
- 4 將握柄 (圖 24)頂部的蓋子拆下。
- 5 將螺絲起子插入正面護板邊緣的底下，將護板和開關按鈕 (圖 25)拆下。
- 6 拆下開關按鈕 (圖 26)下方的內部小零件。

- 7 使用螺絲起子 (圖 27)將內框架推出外殼。
- 8 使用鉗子剪斷電線，然後取出電池 (圖 28)。

疑難排解

本章概述了使用本產品最常遇到的問題。如果無法利用以下資訊解決遇到的問題，請造訪

www.philips.com/support 瀏覽常見問題清單，或聯絡您所在國家/地區的飛利浦客戶服務中心。

問題	可能原因	解決方法
電鬚刀不像平常一樣運作。	電鬚刀刀頭毀壞或磨損。	更換刀頭 (見 '更換')。
	電鬚刀刀頭有髒汙。	清潔刀頭 (見 '清潔與維護')。
	長鬚鬚卡住電鬚刀刀頭。	清潔刀頭 (見 '清潔與維護')。
	充電式電池電力不足。	關閉電鬚刀電源，並將電池 (見 '充電')充電。
開啟產品電源時，電鬚刀無法使用。	充電式電池沒電。	關閉電鬚刀電源，並將電池 (見 '充電')充電。
電鬚刀組中的電鬚刀刀頭不穩固。	固定架未妥善固定。	如果您在將固定架推回電鬚刀刀頭時聽見喀一聲，就表示固定架已適當固定。
	電鬚刀刀頭的凸出部分未正確安裝。	確定電鬚刀刀頭的凸出部分 (圖 20)在放入電鬚刀刀頭固定座時，完全精準地嵌入固定座的鉤子。