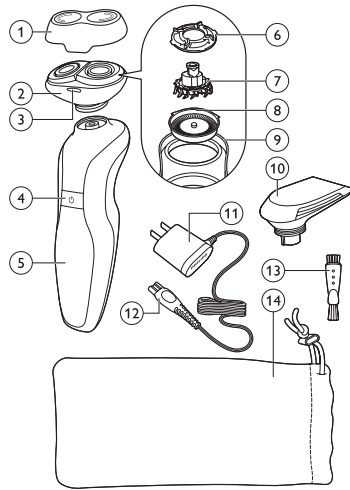


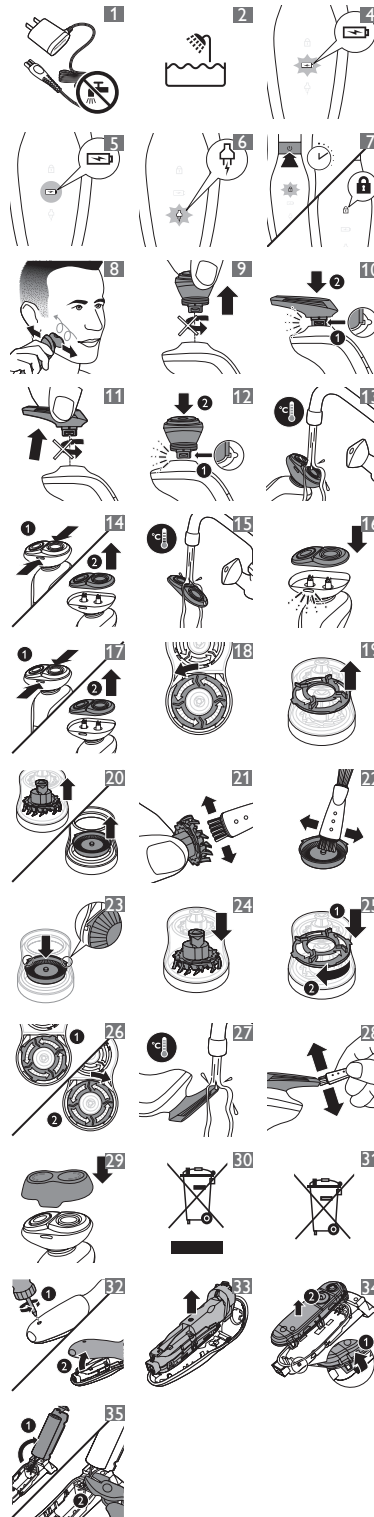
RQ361, RQ360



PHILIPS



3



ENGLISH

Introduction

Congratulations on your purchase and welcome to Philips! To fully benefit from the support that Philips offers, register your product at www.philips.com/welcome.

Important

Read this user manual carefully before you use the appliance and save it for future reference.

Danger

- Make sure the adapter does not get wet (Fig. 1).
- The adapter contains a transformer. Do not cut off the adapter to replace it with another plug, as this causes a hazardous situation.

Warning

- This appliance is not intended for use by persons (including children) with reduced physical, sensory or mental capabilities, or lack of experience and knowledge, unless they have been given supervision or instruction concerning use of the appliance by a person responsible for their safety.
- Children should be supervised to ensure that they do not play with the appliance.
- Be careful with hot water when you clean the appliance. Always check if the water is not too hot, to prevent your hands from getting burnt.

Caution

- Charge, use and store the shaver at a temperature between 5°C and 35°C.
- Always put the protection cap on the shaver to protect the shaving heads when you are travelling.
- The shaver and the accessories are not dishwasher-proof.
- Never use water hotter than 80°C to rinse the shaver.
- Only use the adapter supplied.
- Do not use the shaver or the adapter if it is damaged.
- If the adapter is damaged, always have it replaced with one of the original type in order to avoid a hazard.

- Water may leak from the socket at the bottom of the shaver when you rinse it. This is normal and not dangerous because all electronics are enclosed in a sealed power unit inside the shaver.

Compliance with standards

- This shaver complies with the internationally approved safety regulations and can be safely used in the bath or shower and cleaned under the tap (Fig. 2).
- This Philips appliance complies with all standards regarding electromagnetic fields (EMF). If handled properly and according to the instructions in this user manual, the appliance is safe to use based on scientific evidence available today.

General

- The adapter transforms 100-240 volts to a safe low voltage of less than 24 volts.

General description (Fig. 3)

- 1 Protection cap
- 2 Shaving unit with shaving head holder
- 3 Shaving head holder release buttons
- 4 On/off button
- 5 Display
- 6 Retaining ring
- 7 Cutter
- 8 Shaving guard
- 9 Shaving head holder
- 10 Trimmer
- 11 Adapter
- 12 Small plug
- 13 Cleaning brush
- 14 Storage pouch

The display

Before you use the shaver for the first time, remove the protective foil from the display.

'Charging' indication

- When the shaver is charging, the battery symbol flashes (Fig. 4).

'Battery fully charged' indication

- When the battery is fully charged, the battery symbol lights up continuously (Fig. 5).
- If you leave the shaver connected to the mains, the light goes out after 30 minutes.

www.philips.com

100% recycled paper
 100% papier recyclé
 100% 循环再造纸

4222.002.5427.2



'Battery low' indication

- When the battery is almost empty, the plug symbol starts flashing (Fig. 6).
- When you switch off the shaver, the plug symbol continues to flash for a few more seconds.

Travel lock

You can lock the shaver when you are going to travel. The travel lock prevents the shaver from being switched on by accident.

Note: The travel lock cannot be activated when the shaver is connected to the mains.

Activating the travel lock

- 1** Press and hold the on/off button until the travel lock symbol stops flashing and the motor stops running (Fig. 7).

The travel lock is now activated.

Note: If you release the on/off button before the travel lock symbol stops flashing, the travel lock is not activated.

Deactivating the travel lock

- 1** Press and hold the on/off button until the travel lock symbol stops flashing and the motor starts running.

The shaver is now ready for use again.

Note: When you start charging, the travel lock is deactivated automatically.

Charging

It takes approx. 60 minutes to fully charge the battery.

When you charge the shaver for the first time or after a long period of disuse, let it charge for 90 minutes.

A fully charged shaver provides up to 40 shaving minutes.

If you have a heavy beard, the shaver may provide less than 40 shaving minutes. The number of shaving minutes may also vary over time, depending on your shaving behaviour, cleaning habits and beard type.

Charging

Do not charge the shaver in a closed pouch or in the packaging.

- 1** Put the small plug in the shaver.
- 2** Put the adapter in the wall socket.
- 3** The battery symbol on the shaver flashes to show that the shaver is charging (see chapter 'The display').

Note: When you remove the adapter from the wall socket and leave the small plug in the shaver, the shaver may not work for a few seconds.

Using the shaver

Note: You cannot use the shaver while it is connected to the mains.

Shaving

Skin adaptation period

Your first shaves may not bring you the result you expect and your skin may even become slightly irritated. This is normal. Your skin and beard need time to adapt to any new shaving system.

We advise you to shave regularly (at least 3 times a week) for a period of 3 weeks to allow your skin to adapt to the new shaver. During this period, use your new electric shaver exclusively and do not use other shaving methods. If you use different shaving methods, it is more difficult for your skin to adapt to the new shaving system.

- 1** Press the on/off button to switch on the shaver.
- 2** Move the shaving heads over your skin. Make both straight and circular movements (Fig. 8).
- 3** Press the on/off button to switch off the shaver.
- 4** Clean the shaver after every shave (see chapter 'Cleaning and maintenance').

Wet shaving

You can also use this shaver on a wet face with shaving foam or shaving gel. To shave with shaving foam or shaving gel, follow the steps below:

- 1** Apply some water to your skin.
- 2** Apply shaving foam or shaving gel to your skin.
- 3** Rinse the shaving unit under the tap to ensure that the shaving unit glides smoothly over your skin.
- 4** Press the on/off button to switch on the shaver.
- 5** Move the shaving heads over your skin. Make both straight and circular movements.

Note: Rinse the shaver under the tap regularly to ensure that it continues to glide smoothly over your skin.

- 6** Dry your face and thoroughly rinse the shaver with a sufficient amount of water after every shave. Make sure you rinse all foam or shaving gel off the shaver (see also chapter 'Cleaning and maintenance').

Trimming

You can use the trimmer to groom your sideburns and moustache.

- 1** Pull the shaving unit straight off the shaver (Fig. 9).

Note: Do not twist the shaving unit while you pull it off the shaver.

- 2** Insert the lug of the trimmer into the slot in the top of the shaver (1). Then press down the trimmer (2) to attach it to the shaver ('click') (Fig. 10).

- 3** Press the on/off button to switch on the trimmer. You can now start trimming.

- 4** Press the on/off button to switch off the trimmer.

- 5** Pull the trimmer straight off the shaver (Fig. 11).

Note: Do not twist the trimmer while you pull it off the shaver.

- 6** Insert the lug of the shaving unit into the slot in the top of the shaver (1). Then press down the shaving unit (2) to attach it to the shaver ('click') (Fig. 12).

Cleaning and maintenance

Never use scouring pads, abrasive cleaning agents or aggressive liquids such as petrol or acetone to clean the shaver and its accessories.

- Clean the shaver after every shave.
- Clean the shaving heads frequently with Philips Shaving Head Cleaning Spray (HQ110) for optimal shaving performance.
- You can clean the outside of the shaver with a damp cloth. Do not clean the shaving unit with a cloth.

Cleaning the shaving unit

Be careful with hot water. Always check if the water is not too hot, to prevent your hands from getting burnt.

- 1** Switch off the shaver.

- 2** Rinse the shaving unit under a hot tap for some time (Fig. 13).

Note: You can also clean the shaving unit with the cleaning brush supplied.

- 3** After rinsing the appliance under the tap, hold it upright for 10-15 seconds to allow water to run out of the bottom.

- 4** Press the release buttons on the shaving unit (1) and pull the shaving head holder off the shaving unit (2). (Fig. 14)

- 5** Rinse the shaving head holder under a hot tap for 30 seconds (Fig. 15).

Note: You can also clean the shaving head holder with the cleaning brush supplied.

- 6** Carefully shake off excess water and let the shaving head holder dry.

Never dry the shaving head holder with a towel or tissue, as this may damage the shaving heads.

- 7** Reattach the shaving head holder to the shaving unit ('click') (Fig. 16).

Extra-thorough cleaning method

- 1** Switch off the shaver.

- 2** Press the release buttons on the shaving unit (1) and pull the shaving head holder off the shaving unit (2) (Fig. 17).

- 3** To unlock the orange retaining ring, turn it in the direction of the arrows indicated in and on the retaining ring (Fig. 18).

- 4** Lift the retaining ring out of the shaving head holder. (Fig. 19)

- 5** Remove the cutter and the shaving guard (Fig. 20).

Note: Do not clean more than one cutter and shaving guard at a time, since they are all matching sets. If you accidentally put a cutter in the wrong shaving guard, it may take several weeks before optimal shaving performance is restored.

- 6** Clean the cutter with the cleaning brush supplied (Fig. 21).

- 7** Clean the inside of the shaving guard (Fig. 22).

- 8** After cleaning, place the shaving guard back into the shaving head holder. Make sure the two wings fit exactly into the recesses of the shaving head holder (Fig. 23).

- 9** Place the cutter back into the shaving guard with the cutter legs pointing downwards (Fig. 24).

- 10** Place the retaining ring back onto the shaving head holder (1). To reattach the retaining ring, turn it against the direction of the arrows indicated in and on the retaining ring (2) (Fig. 25).

Note: Make sure the retaining ring is fixed properly. The four wings of the retaining ring have to be located exactly under the recesses of the shaving head holder (Fig. 26).

- 11** Reattach the shaving head holder to the shaving unit ('click'). (Fig. 16)

Note: If the shaving unit does not close smoothly, check if you have positioned the shaving heads properly and if the retaining rings are fixed properly.

Cleaning the trimmer

Clean the trimmer after every use.

Cleaning the trimmer under the tap

- 1** Switch on the appliance with the trimmer attached.
- 2** Rinse the trimmer under a hot tap for some time. (Fig. 27)
- 3** After cleaning, switch off the appliance.
- 4** After rinsing the appliance under the tap, hold it upright for 10-15 seconds to allow water to run out of the bottom.

Cleaning the trimmer with the cleaning brush supplied

- 1 Switch off the trimmer.
- 2 Clean the trimmer with the short-bristled side of the cleaning brush. Brush up and down along the trimmer teeth. (Fig. 28)

Tip: For optimal trimmer performance, lubricate the trimmer teeth frequently with Philips Shaving Head Cleaning Spray (HQ110).

Storage

Note: Make sure the shaving unit is dry before you store the shaver.

- 1 Put the protection cap on the shaver after use to prevent damage and to avoid dirt accumulation in the shaving heads (Fig. 29).
- 2 Store the shaver in the pouch supplied.

Replacement

For maximum shaving performance, we advise you to replace the shaving heads every two years. Replace damaged shaving heads right away.

Only replace the shaving heads with original RQ32 Philips shaving heads. See also chapter 'Ordering accessories'.

- 1 Switch off the shaver.
- 2 Press the release buttons on the shaving unit and pull the shaving head holder off the shaving unit (Fig. 14).
- 3 To unlock the orange retaining ring, turn it in the direction of the arrows indicated in and on the retaining ring (Fig. 18).
- 4 Lift the retaining ring out of the shaving head holder (Fig. 19).
- 5 Remove the shaving heads and place new ones in the shaving head holder.

Make sure the two wings of the shaving heads fit exactly into the recesses.

- 6 Place the retaining ring back onto the shaving head holder (1). To reattach the retaining ring, turn it against the direction of the arrows indicated in and on the retaining ring (2) (Fig. 25).

Note: Make sure the retaining ring is fixed properly. The four wings of the retaining ring have to be located exactly under the recesses of the shaving head holder (Fig. 26).

- 7 Reattach the shaving head holder to the shaving unit ('click') (Fig. 16).

Note: If the shaving unit does not close smoothly, check if you have positioned the shaving heads properly and if the retaining rings are fixed properly.

Ordering accessories

To purchase accessories for this appliance, please visit our online shop at www.shop.philips.com/service. If the online shop is not available in your country, go to your Philips dealer or a Philips service centre. If you have any difficulties obtaining accessories for your appliance, please contact the Philips Consumer Care Centre in your country. You find its contact details in the worldwide guarantee leaflet.

The following accessories are available:

- RQ32 Philips shaving heads
- HQ110 Philips Shaving Head Cleaning Spray

Environment

- Do not throw away the appliance with the normal household waste at the end of its life, but hand it in at an official collection point for recycling. By doing this, you help to preserve the environment (Fig. 30).
- The built-in rechargeable shaver battery contains substances that may pollute the environment. Always remove the battery before you discard or hand in the shaver at an official collection point. Dispose of the battery at an official collection point for batteries. If you have trouble removing the battery, you can also take the appliance to a Philips service centre. The staff of this centre will remove the battery for you and will dispose of it in an environmentally safe way (Fig. 31).

Removing the rechargeable shaver battery

Only remove the rechargeable battery when you discard the shaver. Make sure the rechargeable battery is completely empty when you remove it.

Be careful, the battery strips are sharp.

- 1 Undo the screw in the back panel of the shaver with a screwdriver (1) and remove the back panel (2) (Fig. 32).
- 2 Bend the hooks aside and remove the power unit (Fig. 33).
- 3 Break the snap hooks (1) and remove the front panel of the power unit (2) (Fig. 34).
- 4 Take out the battery holder (1) and cut the battery tags with a pair of cutting pliers (2) (Fig. 35).
- 5 Remove the rechargeable battery.

Guarantee and service

If you need service or information or if you have a problem, please visit the Philips website at www.philips.com/support or contact the Philips Consumer Care Centre in your country. You find its phone number in the worldwide guarantee leaflet. If there is no Consumer Care Centre in your country, go to your local Philips dealer.

Guarantee restrictions

The shaving heads (cutters and guards) are not covered by the terms of the international guarantee because they are subject to wear.

Troubleshooting

This chapter summarises the most common problems you could encounter with the appliance. If you are unable to solve the problem with the information below, visit www.philips.com/support for a list of frequently asked questions or contact the Consumer Care Centre in your country.

Problem	Possible cause	Solution
The shaver does not shave as well as it used to.	The shaving heads are damaged or worn.	Replace the shaving heads (see chapter 'Replacement').

Problem	Possible cause	Solution
	The shaving heads are dirty.	Clean the cutters and guards with the cleaning brush supplied (see chapter 'Cleaning and maintenance', section 'Extra-thorough cleaning method').

Long hairs obstruct the shaving heads.	Clean the cutters and guards with the cleaning brush supplied (see chapter 'Cleaning and maintenance', section 'Extra-thorough cleaning method').
--	---

Shaving foam or shaving gel has accumulated in the shaving heads.	Rinse the shaving heads thoroughly with a sufficient amount of water.
---	---

The shaver does not work when I press the on/off button.	The rechargeable battery is empty.	Recharge the battery (see chapter 'Charging').
--	------------------------------------	--

The travel lock is activated.	To deactivate the travel lock, press and hold the on/off button until the travel lock symbol stops flashing and the motor starts running.
-------------------------------	---

Problem	Possible cause	Solution
	The temperature of the shaver is too high. In this case, the shaver does not work.	Let the shaver cool down. As soon as the temperature of the shaver has dropped sufficiently, you can switch on the shaver again.

	When you remove the adapter from the wall socket and leave the small plug in the shaver, the shaver does not work for a few seconds.	Remove the small plug from the shaver.
--	--	--

The shaver does not work, even though it is connected to the mains.	This shaver is not designed to be used directly from the mains.	Remove the adapter from the wall socket and the small plug from the shaver. You can now switch on the shaver again.
---	---	---

My skin is irritated after shaving.	Your skin needs time to get used to the Philips shaving system.	Skin irritation during the first 2-3 weeks of use is possible. After this period, the skin irritation usually disappears.
-------------------------------------	---	---

	The shaving heads are damaged or worn.	Replace the shaving heads (see chapter 'Replacement').
--	--	--

Problem	Possible cause	Solution
The rotation speed of the shaving heads is lower than usual.	Too much dirt has collected in the shaving heads.	Clean the shaving heads. See chapter 'Cleaning and maintenance'.

	The re-chargeable battery is low.	Recharge the battery. See chapter 'Charging'.
--	-----------------------------------	---

The shaving heads do not stay in place.	You did not fix the retaining rings properly.	The retaining ring is fixed properly if the four wings of the retaining ring are located exactly under the recesses of the shaving head holder.
---	---	---

After fully charging the shaver, it provides less than 40 shaving minutes.

If you have a heavy beard, the shaver may provide less than 40 shaving minutes. The number of shaving minutes may also vary over time, depending on your shaving behaviour; cleaning habits and beard type.

繁體中文

簡介

感謝您購買本產品並歡迎加入飛利浦！請於 www.philips.com/welcome 註冊您的產品，以善用飛利浦提供的支援。

重要事項

在使用本產品前，請先仔細閱讀本使用手冊，並保留使用手冊以供日後參考。

危險

- 請確定轉換器沒有弄濕。(圖 1)
- 轉換器內含一個變壓器。請勿切斷轉換器而以其他插頭取代，否則會造成危險。

警示

- 基於安全考慮，在缺乏監督及適當指示之下，本產品不適用於孩童及任何身體、知覺、或心理功能障礙者，或缺乏使用經驗及知識者。
- 請勿讓孩童使用本產品或將本產品當成玩具。
- 清潔產品時，請小心使用熱水。請隨時檢查熱水是否太燙，以避免手部燙傷。

警告

- 請於 5° C 到 35° C 間充電、使用並存放電鬍刀。
- 當您出外旅行時，請隨時為電鬍刀加上保護蓋，以保護電鬍刀刀頭。
- 電鬍刀和配件均不可放入洗碗機清洗。
- 切勿使用超過 80° C 的熱水沖洗電鬍刀。
- 只能使用產品所附的變壓器。
- 電鬍刀或變壓器損壞時，請勿使用。
- 如果轉換器損壞，請務必使用原型號的轉換器進行更換，以免發生危險。
- 在您沖洗時，水可能會從電鬍刀底部的插孔流出。此為正常現象，不會造成危險，因為所有的電子零件都密封於電鬍刀內的電源裝置中。

符合標準

- 本電鬍刀符合國際公認安全標準，可以在沐浴或淋浴時安全使用，亦可放心以水龍頭沖洗。(圖 2)
- 本飛利浦產品符合電磁波 (Electromagnetic fields, EMF) 所有相關標準。只要使用方式正確並依照本使用手冊之說明進行操作，根據現有的科學研究資料，使用本產品並無安全顧慮。

一般

- 轉換器可將 100-240 伏特的電壓轉換為低於 24 伏特的安全低電壓。

一般說明 (圖 3)

- 1 保護蓋
- 2 附電鬍刀刀頭固定座的電鬍刀組
- 3 電鬍刀刀頭固定座釋放鈕
- 4 開/關按鈕
- 5 顯示
- 6 固定環
- 7 刀具
- 8 電鬍刀刀網
- 9 電鬍刀刀頭固定座
- 10 鬚角刀
- 11 轉換器
- 12 小插頭
- 13 清潔刷
- 14 收納袋

顯示畫面

第一次使用本電鬍刀前，請先撕除螢幕的保護膜。

「充電」指示

- 電鬍刀充電中時，電池符號會閃爍。(圖 4)

「電池充滿電」指示

- 當電池充滿電時，電池符號會持續亮起。(圖 5)
- 如果您將電鬍刀連接至電源時，燈號會在 30 分鐘後自動熄滅。

「電量不足」指示

- 當電池電力即將用盡時，插頭符號會開始閃爍。(圖 6)
- 當您關閉電鬍刀的電源時，插頭符號會持續閃爍數秒。

旅行鎖定

在您外出旅行之前，可以設定鎖住電鬍刀。使用旅行鎖定可防止電鬍刀意外開啟電源。

注意：電鬍刀插接電源時無法啟動旅行鎖定。

啟動旅行鎖定

- 1 按住開關 (on/off) 按鈕直到旅行鎖定符號停止閃爍，且馬達停止運轉為止。(圖 7)
- 這時即已啟動旅行鎖定。

注意：若您在旅行鎖定符號停止閃爍前放開開關 (on/off) 按鈕，則旅行鎖定不會啟動。

解除旅行鎖定

- 1 按住開關 (on/off) 按鈕直到旅行鎖定符號停止閃爍，且馬達開始運轉為止。

電鬍刀現在已可再度使用。

注意：一開始充電就會自動解除旅行鎖定。

充電

完整充電約需 60 分鐘。

在您第一次對電鬍刀充電或者長時間沒有使用後，請讓它連續充電 90 分鐘。充滿電的電鬍刀可刮鬍 40 分鐘。若您的鬚鬢濃密，電鬍刀的刮鬍時間可能少於 40 分鐘。此外，取決於您的刮鬍方式、清潔習慣和鬚鬢類型，可使用時間也可能會隨著時日改變。

充電

請勿將電鬍刀置於密閉收納袋中或在包裝內充電。

- 1 將小插頭插上電鬍刀。

- 2 將轉換器插入插座。
 - ▶ 電鬍刀的電池符號閃爍，表示電鬍刀正在充電中 (請參閱「顯示畫面」單元)。

注意：當您將轉換器從電源插座拔除時，小插頭若仍插在電鬍刀上，電鬍刀可能有幾秒鐘無法運作。

使用本電鬍刀

注意：您無法在電鬍刀仍連接在電源上時使用。

刮鬍

皮膚適應期

您第一次刮鬍的結果可能不如您所預期，皮膚甚至可能稍微刺痛。這是正常現象。您的皮膚與鬚鬢需要時間適應任何新的刮鬍系統。我們建議您定期刮鬍 (每週至少 3 次) 為期 3 週，讓您的肌膚適應新的電鬍刀。這段期間，請只使用您的新電鬍刀，不要使用其他的刮鬍方式。如果您使用不同的刮鬍方式，您的皮膚可能較難適應新的刮鬍系統。

- 1 按下開關 (on/off) 按鈕，開啟電鬍刀電源。
- 2 將電鬍刀頭在皮膚上移動，請同時用直線及畫圓的方式來移動。(圖 8)

- 3 按下開/關 (on/off) 按鈕，關閉電鬍刀電源。

- 4 每次刮鬍後，請清潔本電鬍刀 (請參閱「清潔與保養」單元)。

濕潤刮鬍

您也可以在有刮鬍膏或刮鬍凝露的濕潤面部上使用本電鬍刀。若要在刮鬍時配合使用刮鬍膏或刮鬍凝露，請依照下列步驟：

- 1 在皮膚上抹一點水。
- 2 將刮鬍膏或刮鬍凝露抹到皮膚上。
- 3 將電鬍刀組放在水龍頭下沖洗，以確保電鬍刀組能在皮膚上平順移動。
- 4 按下開關 (on/off) 按鈕，開啟電鬍刀電源。
- 5 將電鬍刀頭在皮膚上移動，請同時用直線及畫圓的方式來移動。

注意：定期將電鬍刀放在水龍頭下沖洗，以確保電鬍刀持續在皮膚上平順移動。

- 6 每次刮鬍，請擦乾臉部，並使用足量的水徹底沖洗電鬍刀。請確實從電鬍刀上洗去所有刮鬍膏或刮鬍凝露 (請參閱「清潔與維護」單元)。

修剪

您可以使用鬚角刀修整鬚角與鬚鬢。

- 1 從電鬍刀中垂直抽出電鬍刀組。(圖 9)

注意：當您從電鬍刀中抽出電鬍刀組時，請勿旋轉。

- 2 將鬚角刀的突耳插入電鬍刀頂端的凹槽 (1)，再將鬚角刀往下壓 (2) 即可安裝到電鬍刀上 (會聽見「喀嗒」一聲)。(圖 10)
- 3 按下開關 (on/off) 按鈕，開啟鬚角刀電源。這時即可開始修整。
- 4 按下開/關 (on/off) 按鈕，關閉鬚角刀電源。
- 5 從電鬍刀中垂直抽出鬚角刀。(圖 11)

注意：當您從電鬍刀中抽出鬚角刀時，請勿旋轉。

- 6 將電鬍刀組的突耳插入電鬍刀頂端的凹槽 (1)，再將電鬍刀組往下壓 (2) 即可安裝到電鬍刀上 (會聽見「喀嗒」一聲)。(圖 12)

清潔與維護

切勿使用鋼絲絨、磨蝕性的清潔劑或侵蝕性的液體 (例如汽油或丙酮) 清潔電鬚刀及其配件。

- 每次刮鬚後均需清潔電鬚刀。
- 為得到最佳的刮鬚性能，請經常使用飛利浦電鬚刀刀頭噴霧清潔劑 (HQ110) 清潔電鬚刀刀頭。
- 您可以使用濕布清潔電鬚刀外側。請勿用布清潔電鬚刀組。

清洗電鬚刀組

請小心使用熱水。隨時檢查熱水是否太燙，以避免手部燙傷。

- 1 請先關閉電鬚刀電源。
- 2 將電鬚刀組以熱水沖洗一段時間。(圖 13)

注意：您也可以用產品所附的清潔刷清潔電鬚刀組。

- 3 在水龍頭下沖洗本產品，將其直立 10-15 秒，讓水從底部流出。
- 4 按下電鬚刀組的釋放鈕 (1) 並將電鬚刀刀頭固定座從電鬚刀組取下 (2)。(圖 14)
- 5 將電鬚刀刀頭固定座放在熱水龍頭下沖洗 30 秒。(圖 15)

注意：您也可以用產品所附的清潔刷清潔電鬚刀刀頭固定座。

- 6 仔細用乾多餘的水份之後，讓電鬚刀刀頭固定座乾燥。

切勿使用毛巾或紙巾擦乾電鬚刀刀頭固定座，因為此舉可能會造成電鬚刀刀頭損害。

- 7 將電鬚刀刀頭固定座重新接上電鬚刀組 (會聽見「喀嗒」一聲)。(圖 16)

超徹底清潔方法

- 1 請先關閉電鬚刀電源。
- 2 按下電鬚刀組的釋放鈕 (1) 並將電鬚刀刀頭固定座從電鬚刀組取下 (2)。(圖 17)
- 3 若要鬆開橘色固定環，請將它依固定環上指示的箭頭旋轉。(圖 18)
- 4 從電鬚刀刀頭固定座上取出固定環。(圖 19)
- 5 取下電鬚刀刀網與刀片。(圖 20)

注意：因為刀片及刀網是成對的一組，請勿一次清潔一組以上。如果您不小心將刀片放進錯誤的電鬚刀刀網中，可能要花幾週的時間才能恢復最理想的刮鬚效果。

- 6 使用隨附於電鬚刀的清潔刷來清潔刀片。(圖 21)
- 7 清潔電鬚刀刀網內部。(圖 22)
- 8 清潔完畢後，將電鬚刀刀網裝回電鬚刀刀頭固定座。請確定兩翼準確嵌入電鬚刀刀頭固定座的凹處。(圖 23)
- 9 請將刀片放回電鬚刀刀網，使刀片腳朝下。(圖 24)
- 10 將固定環放回電鬚刀刀頭固定座 (1)。要重新裝回固定環，將固定環朝箭頭標示的反方向旋轉 (2)。(圖 25)

注意：請確定固定環已正確固定。固定環的四翼必須準確嵌入電鬚刀刀頭固定座的凹處。(圖 26)

- 11 將電鬚刀刀頭固定座重新接上電鬚刀組 (會聽見「喀嗒」一聲)。(圖 16)

注意：若電鬚刀組無法順利關上，請檢查電鬚刀頭安裝位置是否正確，以及固定環是否確實固定。

清潔鬚角刀

每次使用後均需清潔鬚角刀。

將鬚角刀放在水龍頭下沖洗

- 1 裝上鬚角刀後，開啟產品電源。
 - 2 將鬚角刀以熱水沖洗一段時間。(圖 27)
 - 3 清潔之後，關閉產品電源。
 - 4 在水龍頭下沖洗本產品，將其直立 10-15 秒，讓水從底部流出。
- 使用隨附的清潔刷來清潔鬚角刀

- 1 關閉鬚角刀電源。
- 2 以清潔刷的短毛側來清潔鬚角刀。請沿著鬚角刀的刀齒上下地刷。(圖 28)

提示：為使鬚角刀發揮最佳性能，請經常使用飛利浦電鬚刀刀頭噴霧清潔劑 (HQ110) 潤滑鬚角刀的刀齒。

收納

注意：務必等電鬚刀組乾燥之後再收納電鬚刀。

- 1 使用後請為電鬚刀蓋上保護蓋以防損壞，並避免污垢累積在刀頭中。(圖 29)
- 2 將電鬚刀存放在隨附的收納袋中。

更換

為得到最佳的刮鬚性能，我們建議您請每兩年更換一次電鬚刀刀頭。有損傷的電鬚刀刀頭則請要立即更換。更換電鬚刀刀頭時，限使用原廠 RQ32 飛利浦電鬚刀刀頭。亦請參閱「訂購配件」單元。

- 1 請先關閉電鬚刀電源。
- 2 按下電鬚刀組的釋放鈕，將電鬚刀刀頭固定座從電鬚刀組取下。(圖 14)
- 3 若要鬆開橘色固定環，請將它依固定環上指示的箭頭旋轉。(圖 18)

- 4 從電鬚刀刀頭固定座上取出固定環。(圖 19)

- 5 取出電鬚刀刀頭，然後在電鬚刀刀頭固定座換上新的刀頭。

確定電鬚刀刀頭兩翼準確嵌入凹處。

- 6 將固定環放回電鬚刀刀頭固定座 (1)。要重新裝回固定環，將固定環朝箭頭標示的反方向旋轉 (2)。(圖 25)

注意：請確定固定環已正確固定。固定環的四翼必須準確嵌入電鬚刀刀頭固定座的凹處。(圖 26)

- 7 將電鬚刀刀頭固定座重新接上電鬚刀組 (會聽見「喀嗒」一聲)。(圖 16)

注意：若電鬚刀組無法順利關上，請檢查電鬚刀頭安裝位置是否正確，以及固定環是否確實固定。

訂購配件

如需購買本產品的配件，請造訪我們的線上商店：www.shop.philips.com/service。若您所在國家沒有線上商店，請聯絡您的飛利浦經銷商或飛利浦服務中心。如果無法取得產品的配件，請聯絡您所在國家的飛利浦客戶服務中心。如需詳細聯絡資料，請參閱全球保證書。

備有下列配件可供另外選購：

- RQ32 飛利浦電鬚刀刀頭
- HQ110 飛利浦電鬚刀刀頭噴霧清潔劑

環境保護

- 本產品使用壽命結束時請勿與一般家庭廢棄物一併丟棄。請將該產品放置於政府指定的回收站，此舉能為環保盡一份心力。(圖 30)
- 本電鬚刀使用的充電電池可能含有會污染環境的物質。將本電鬚刀丟棄或是送到政府指定回收站前，請務必先取出電池，並將電池送到政府指定的電池回收站。若您無法取出電池，也可將本產品帶到飛利浦授權服務中心。服務中心會為您卸下電池，並以對環境無害的方式處理電池。(圖 31)

取出電鬚刀的充電電池

棄置本電鬚刀前，請先取出充電電池。當您要取出充電電池時，請確認其電力已完全耗盡。

電池固定帶非常銳利，請小心。

- 1 用螺絲起子 (1) 轉開電鬚刀的背板螺絲，拆下背板 (2)。(圖 32)
- 2 彎折旁邊的扣鉤，然後取出供電裝置。(圖 33)
- 3 斷開彈簧鉤 (1)，並取下供電裝置的正面護板 (2)。(圖 34)
- 4 取出電池固定座 (1) 並使用剪鉗 (2) 將電池拉片剪斷。(圖 35)
- 5 取出充電電池。

保固與服務

若您需要相關服務或資訊，或是有任何問題，請瀏覽飛利浦網站：www.philips.com/support，或聯絡當地的飛利浦客戶服務中心，您可以在全球保證書上找到聯絡電話。若您當地沒有客戶服務中心，請洽詢當地的飛利浦經銷商。

保固限制

電鬚刀刀頭 (刀具和刀網) 由於其耗損性，因此不在全球保固範圍內。

故障排除

本章概述您使用本產品時最常遇到的問題。如果您無法利用以下資訊解決您遇到的問題，請造訪 www.philips.com/support，或聯絡您所在國家/地區的飛利浦客戶服務中心。

問題	可能原因	解決方法
電鬚刀不像平常一樣運作。	電鬚刀刀頭毀壞或磨損。	更換電鬚刀刀頭 (請參閱「更換」單元)。
	電鬚刀頭髒污。	使用隨附的清潔刷清潔刀具及刀網 (請參閱「清潔與維護」單元的「超徹底清潔方法」小節)。
	長鬚鬚卡住電鬚刀刀頭。	使用隨附的清潔刷清潔刀具及刀網 (請參閱「清潔與維護」單元的「超徹底清潔方法」小節)。
	刮鬚膏或刮鬚凝露黏附在電鬚刀頭上。	以足量的水徹底沖洗電鬚刀刀頭。
我按下開/關 (On/Off) 按鈕時，電鬚刀沒有反應。	充電式電池沒電。	將電池重新充電 (請參閱「充電」單元)。
	旅行鎖定已啟動。	若要解除旅行鎖定，按住開關 (on/off) 按鈕直到旅行鎖定符號停止閃爍，且馬達開始運轉為止。
	電鬚刀過熱。	讓電鬚刀冷卻。等到電鬚刀充分降溫，您就能再度啟動電鬚刀的電源。

問題	可能原因	解決方法
	當您將轉換器從電源插座拔除時，小插頭若仍插在電鬚刀上，電鬚刀會有幾秒鐘無法運作。	將小插頭從電鬚刀取下。

電鬚刀無法運作，即使已經連接到電源。	此電鬚刀無法直接插電使用。	將轉換器從電源插座拔除，並將小插頭從電鬚刀上取下。現在您可以再次開啟電鬚刀的電源。
--------------------	---------------	---

刮鬚之後，皮膚感到刺痛。	您的皮膚需要一些時間才能適應飛利浦電鬚刀系統。	開始使用的第 2 到 3 週，皮膚可能有過敏現象。過了這段時間，皮膚過敏的症狀通常會消失。
--------------	-------------------------	---

	電鬚刀刀頭毀壞或磨損。	更換電鬚刀刀頭 (請參閱「更換」單元)。
--	-------------	----------------------

刀頭的旋轉速度比平常緩慢。	過多污垢累積在刀頭中。	請清潔電鬚刀刀頭。請參閱「清潔與維護」單元。
---------------	-------------	------------------------

	充電式電池電力不足。	為電池充電。請參閱「充電」單元。
--	------------	------------------

電鬚刀刀頭不穩固。	固定環未妥善固定。	若固定環的四翼已準確嵌入電鬚刀刀頭固定座的凹處，則表示固定環已正確固定。
-----------	-----------	--------------------------------------

問題	可能原因	解決方法
電鬚刀充飽電後，可提供的刮鬚時間少於 40 分鐘。	若您的鬚髮濃密，電鬚刀的刮鬚時間可能少於 40 分鐘。此外，取決於您的刮鬚方式、清潔習慣和鬚髮類型，可使用時間也可能會隨著時日改變。	