

## Introduction

This new Philips SalonCurl Elite curler originates from the professional market, but is now available for home use to give you salon-perfect long-lasting styling results at home. We hope you will enjoy using your SalonCurl Elite.

## General description (Fig. 1)

- A** Cool tips
- B** Inner barrel
- C** Outer barrel
- D** Stand
- E** Lever
- F** Ready light
- G** Handle
- H** LCD display
  - Temperature setting
  - Remaining usage time
- I** Temperature buttons
- J** On/off button
- K** Heat protection glove

## Important

Read these instructions for use carefully before using the appliance and save them for future reference.

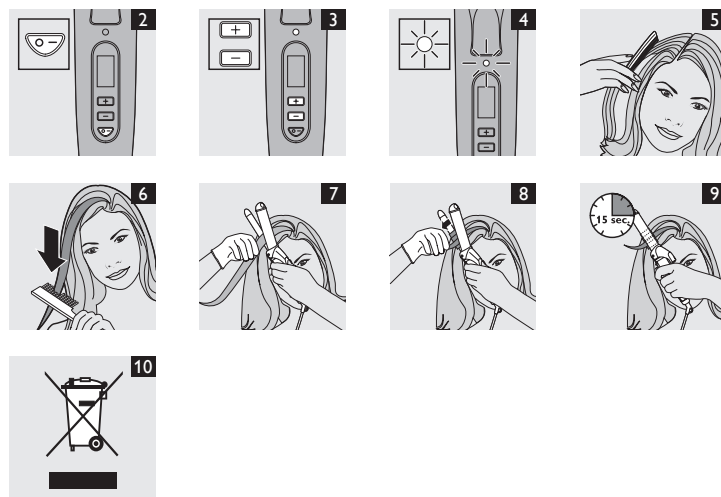
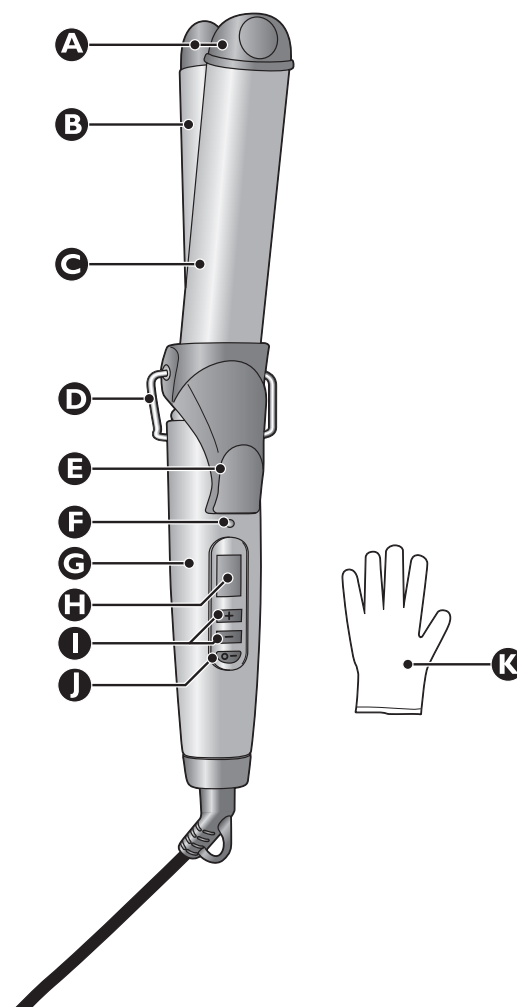
- ▶ When travelling, check if the voltage indicated on the appliance corresponds to the local mains voltage before you connect the appliance.
- ▶ Check the condition of the mains cord regularly. Do not use the appliance if the plug, the cord or the appliance itself is damaged.
- ▶ If the mains cord is damaged, it must be replaced by Philips, a service centre authorised by Philips or similarly qualified persons in order to avoid a hazard.
- ▶ Keep this appliance away from water! Do not use this product near or over water contained in baths, washbasins, sinks etc. When used in a bathroom, unplug the appliance after use since the proximity of water presents a risk, even when the appliance is switched off.
- ▶ For additional protection we advise you to install a residual current device (RCD) with a rated residual operating current not exceeding 30mA in the electrical circuit supplying the bathroom. Ask your installer for advice.
- ▶ The inner and outer barrel of this appliance become hot during use. Prevent contact with the skin.
- ▶ Keep the appliance out of the reach of children.
- ▶ Only use the appliance on dry hair.
- ▶ For safety reasons, the curler automatically switches off after it has been on for 1 hour.
- ▶ Always unplug the appliance after use.
- ▶ Do not wind the mains cord round the appliance.
- ▶ Wait until the appliance has cooled down before you store it.
- ▶ Keep the inner and outer barrel clean and free of dust, dirt and styling products such as mousse, spray and gel. If necessary clean them after use (see chapter 'Cleaning').
- ▶ Always return the appliance to a service centre authorised by Philips for examination or repair. Repair by unqualified people could cause an extremely hazardous situation for the user.
- ▶ The barrel has a ceramic nanosilver coating. This coating will wear in the course of time. When this happens, the appliance will still function normally.
- ▶ Always wear the heat protection glove provided when winding locks of hair round the hot barrel.
- ▶ Never cover the appliance with anything (e.g. a towel or clothing) when it is hot.
- ▶ Never leave the appliance unattended when it is plugged in.
- ▶ Keep the appliance away from flammable items.
- ▶ If the appliance is used on colour-treated hair, the inner and outer barrel may stain.

## Preparing for use

### Washing your hair

Everybody wants shiny and beautiful hair. A good hair-washing routine can help to achieve this.

- 1** When washing your hair, wet your hair thoroughly for 30-60 seconds.
- 2** Pour some TRESemmé shampoo into the palm of your hand. Spread it between your hands and distribute it evenly through the hair.
- 3** Gently massage your hair and scalp.



Do not rough up the hair or pull long hair up onto the scalp, as this may cause tangles.

- 4** Massage your scalp with your fingertips. This stimulates blood circulation and is gentler to the hair cuticles.
- 5** Rinse your hair thoroughly, as poor rinsing can result in dull hair.
- 6** Finish with a cold rinse for extra shine.
- 7** After shampooing, use TRESemmé conditioner to detangle the hair and improve its condition.

### Drying your hair

To get professional styling results, it is essential to prepare your hair for curling. Dry your hair properly with a hairdryer to ensure long-lasting results.

- 1** After washing, squeeze excess water out of the hair with your hands and then towel-dry the hair.
- 2** Use a comb to disentangle hair gently from the roots to the tips.

- 3 Dry your hair by making brushing movements with the hairdryer at a small distance from your hair.
- 4 Set the hairdryer to the cool setting when you have finished drying to enhance shine.

## Using the appliance

### Which temperature to use

Curlers are powerful styling tools and should always be used with care.

If you use the curler incorrectly or if you use it at the wrong temperature, you could overheat your hair or even burn it.

Always select a low temperature setting when you start using the curler for the first time.

- 1 Always select a temperature that is suitable for your hair type.  
For fine or normal hair, select a low to medium temperature (100-140°C).  
For thick or coarse hair, select a medium to high temperature (140-180°C).

Take extra care with pale, blonde, bleached or colour-treated hair, since it will be susceptible to damage at high temperatures.

For loose curls or waves, use a lower temperature than for tight curls.

### Setting the temperature

- 1 Insert the plug into the wall socket.
- 2 Press the on/off button. (Fig. 2)  
The light burns red to indicate that the appliance is heating up. The display shows the selected temperature (the default temperature is 100°C) and the remaining time of the curling session. The total usage time is 60 minutes. Every ten minutes one of the six bars will disappear.
- 3 You can adjust the set temperature by pressing the + and - buttons.  
Look at the display to see the temperature you have selected. The light burns red as long as the appliance is heating up to the set temperature. (Fig. 3)
- 4 The light turns green as soon as the set temperature has been reached. (Fig. 4)

### Styling with the curler

- 1 Comb your hair to get rid of tangles. (Fig. 5)
- 2 Divide your hair into locks and put them aside with clips.  
The thinner the lock of hair, the tighter the curl will be.
- 3 Comb each lock before curling it. (Fig. 6)
- 4 Put on the glove to avoid burning your fingers while you are winding the lock round the inner barrel.
- 5 Start styling at the lower part of your head and work your way up to the crown.
- 6 Lift the outer barrel by pressing the lever and place the lock between the inner barrel and the outer barrel as close to your scalp as possible. (Fig. 7)
- 7 Keep the outer barrel lifted and wind the hair lock round the inner barrel from root to tip. (Fig. 8)
- 8 Release the lever to lower the outer barrel and leave the appliance in position for 15 seconds. Heat is now applied through both the inner and outer barrel. (Fig. 9)
- 9 Press the lever to lift the outer barrel and release the curl.

## Cleaning

- 1 Make sure the appliance is switched off and unplugged.
- 2 Let the appliance cool down completely on its stand.
- 3 Clean the appliance with a damp cloth.

## Storage

Never wind the mains cord round the appliance.

- 1 Make sure the appliance is switched off and unplugged.
- 2 Let the appliance cool down completely on its stand.
- 3 Clean the appliance with a damp cloth.

**TRESemmé**  
USED BY PROFESSIONALS

HP4659/07 SalonCurl Elite



**PHILIPS**



[www.philips.com](http://www.philips.com)

100% recycled paper  
100% papier recyclé

4222.002.6407.1

## Environment

- Do not throw the appliance away with the normal household waste at the end of its life, but hand it in at an official collection point for recycling. By doing this you will help to preserve the environment. (Fig. 10)

## Guarantee & service

If you need information or if you have a problem, please visit the Philips website at [www.philips.com](http://www.philips.com) or contact the Philips Customer Care Centre in your country (you will find its phone number in the worldwide guarantee leaflet). If there is no Customer Care Centre in your country, turn to your local Philips dealer or contact the Service Department of Philips Domestic Appliances and Personal Care BV.

## Troubleshooting

If problems should arise with your curler and you are unable to solve them by means of the information below, please contact the nearest Philips service centre or the Philips Customer Care Centre in your country.

Problem	Cause	Solution
The appliance does not work at all.	Perhaps there is a power failure or the socket is not live. Check if the power supply is working. If it is, check whether the socket is live by plugging in another appliance.	Check if the mains cord of the appliance is damaged. If the mains cord is damaged, it must be replaced by Philips, a service centre authorised by Philips or similarly qualified persons in order to avoid a hazard.
	Perhaps you have not switched the appliance on.	Switch the appliance on by pressing the on/off button.
	Perhaps the appliance switched off automatically after it had been on for 1 hour.	Switch the appliance on again by pressing the on/off button.