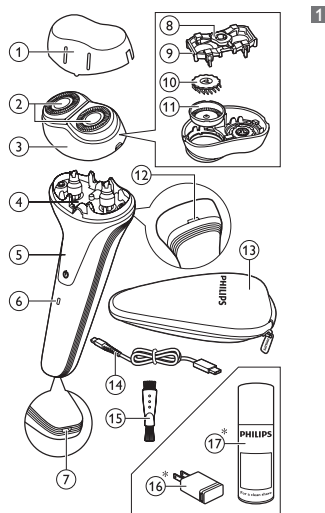




**PHILIPS**

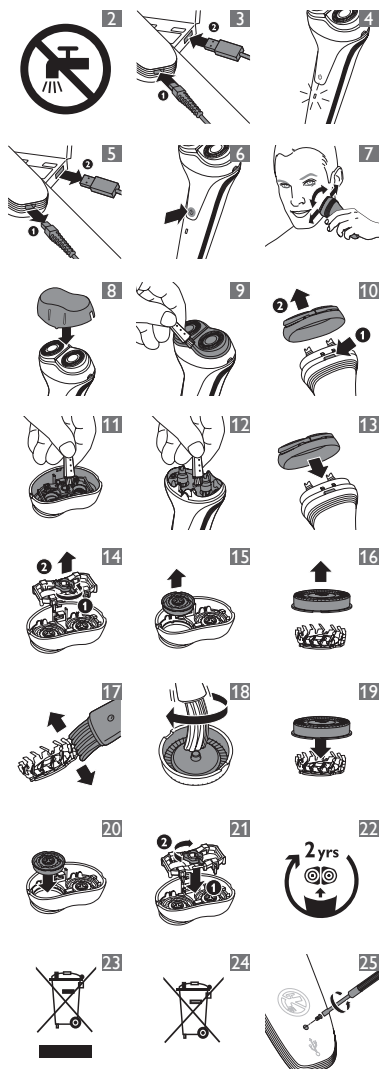


[www.philips.com](http://www.philips.com)



100% recycled paper  
 100% papier recycle

4222.002.5376.1



**ENGLISH**

**Introduction**

Congratulations on your purchase and welcome to Philips! To fully benefit from the support that Philips offers, register your product at [www.philips.com/welcome](http://www.philips.com/welcome).

**General description (Fig. 1)**

- 1 Protection cap
- 2 Shaving heads
- 3 Shaving unit
- 4 Hair chamber
- 5 On/off button
- 6 Charging light
- 7 Socket for USB plug
- 8 Wheel of retaining frame
- 9 Retaining frame
- 10 Cutter
- 11 Guard
- 12 Release button
- 13 Travel pouch
- 14 USB cable
- 15 Cleaning brush
- 16 USB wall adapter (HX9200)\*
- 17 Philips Cleaning Spray (HQ110)\*

\*These parts are not supplied with the appliance, but are available separately. If you want to obtain a USB wall adapter, only buy the Philips USB wall adapter, type HX9200. See chapter 'Ordering accessories' for more information on how to obtain the USB wall adapter and the Philips Cleaning Spray.

**Important**

Read this user manual carefully before you use the appliance and save it for future reference.

**Danger**

- Warning: Keep the appliance, the USB cable and the USB wall adapter\* dry.
- This symbol means: Forbidden to clean under a running tap (Fig. 2).

**Warning**

- Warning: Do not use this appliance close to a bathtub, shower or other containers filled with water.
- If you want to charge the shaver with an adapter, only use the Philips USB wall adapter\*, type HX9200.
- Check if the voltage indicated on the USB wall adapter\* corresponds to the local mains voltage before you connect the appliance.

- This appliance is not intended for use by persons (including children) with reduced physical, sensory or mental capabilities, or lack of experience and knowledge, unless they have been given supervision or instruction concerning use of the appliance by a person responsible for their safety.
- Children should be supervised to ensure that they do not play with the appliance.

**Caution**

- Only use a USB port (e.g. computer, USB wall adapter\* or USB charger) to charge the appliance.
- Do not use the shaver; the USB cable or the USB wall adapter\* if it is damaged.
- If the USB cable or the USB wall adapter\* is damaged, always have it replaced with one of the original type in order to avoid a hazard.
- Charge, use and store the shaver at a temperature between 5°C and 35°C.
- Do not use the shaver in combination with pre-shave lotions, creams, foams, gels or other cosmetic products.

**Compliance with standards**

- This Philips appliance complies with all standards regarding electromagnetic fields (EMF). If handled properly and according to the instructions in this user manual, the appliance is safe to use based on scientific evidence available today.
- This shaver complies with the applicable IEC safety standards.

\*The USB wall adapter is not supplied with the appliance, but is available separately. If you want to charge the shaver with an adapter, only use the Philips USB wall adapter (HX9200). Contact the Consumer Care Centre to obtain this adapter (see chapter 'Ordering accessories').

**Charging**

The shaver can be charged with the USB cable supplied with the appliance. You can either plug the USB cable into a computer or into a Philips USB wall adapter, which is available separately (see chapter 'Ordering accessories'). Make sure the shaver is switched off when you start to charge it. When you charge the shaver for the first time or after a long period of non-use, let it charge continuously for 12 hours. Charging

normally takes approx. 8 hours. Charge the appliance when the motor stops or starts running slower.

For optimal performance, only charge the shaver when the battery is low.

**Do not leave the appliance connected to the USB port for more than 24 hours.**

**1** Insert the plugs of the USB cable into the shaver (1) and the USB port (2) (Fig. 3).

▶ The charging light goes on to indicate that the appliance is charging (Fig. 4).

*Note: Charge the shaver for at least 8 hours but not more than 24 hours.*

**2** Remove the USB plugs from the shaver (1) and the USB port (2) when the battery is fully charged (Fig. 5).

*Note: You cannot use the shaver when it is connected to a USB port. When the battery is empty, you have to recharge the battery before you can use the shaver again.*

### **Cordless shaving time**

A fully charged shaver has a cordless shaving time of approximately 30 minutes.

### **Using the appliance**

*Note: You cannot use the shaver when it is connected to a USB port.*

**1** Remove the protection cap.

**2** Press the on/off button to switch on the shaver (Fig. 6).

**3** Move the shaving heads over your skin. Make both straight and circular movements (Fig. 7).

*Note: Shave on a dry face only. Do not use the shaver in combination with gel, foam or water.*

*Note: Your skin may need 2 or 3 weeks to get accustomed to the Philips shaving system.*

**4** Press the on/off button to switch off the shaver.

**5** Clean the shaver after every shave (see chapter 'Cleaning and maintenance').

**6** Put the protection cap on the shaver to prevent damage and to avoid dirt accumulation in the shaving heads (Fig. 8).

*Note: Make sure that the lug of the protection cap covers the release button.*

### **Cleaning and maintenance**

**Never use scouring pads, abrasive cleaning agents or aggressive liquids such as petrol or acetone to clean the appliance.**

Clean the shaver after every shave to guarantee better shaving performance. For the best cleaning result, we advise you to use Philips Cleaning Spray (HQ110). Ask your Philips dealer for information.

*Note: Philips Shaving Head Cleaning Spray (HQ110) may not be available in all countries. Contact the Consumer Care Centre in your country about the availability of this accessory.*

### **After every shave: shaving unit and hair chamber**

*Note: Make sure the shaver is switched off and disconnected from the USB cable before you clean the shaver.*

**1** Clean the top of the appliance with the cleaning brush supplied (Fig. 9).

**2** Press the release button (1) and pull the shaving unit in a straight upward movement off the shaver (2). (Fig. 10)

**3** Clean the inside of the shaving unit with the cleaning brush (Fig. 11).

**4** Clean the hair chamber with the cleaning brush (Fig. 12).

**5** Put the shaving unit back onto the shaver (Fig. 13).

### **Every two months: shaving heads**

*Note: Do not use cleaning agents or alcohol to clean the shaving heads. Only use Philips Cleaning Spray (HQ110).*

*Note: Make sure the shaver is switched off and disconnected from the USB cable before you clean the shaving heads.*

**1** Press the release button (1) and pull the shaving unit in a straight upward movement off the shaver (2) (Fig. 10).

**2** Turn the orange wheel anticlockwise (1) and remove the retaining frame (2) (Fig. 14).

**3** Remove and clean one shaving head at a time. Each shaving head consists of a cutter and a guard (Fig. 15).

*Note: Do not clean more than one cutter and guard at a time, since they are all matching sets. If you accidentally mix up the cutters and guards, it may take several weeks before optimal shaving performance is restored.*

**4** Remove the guard from the cutter (Fig. 16).

**5** Clean the cutter with the short-bristled side of the cleaning brush. Brush carefully in the direction of the arrows (Fig. 17).

**6** Clean the guard with the long-bristled side of the cleaning brush (Fig. 18).

**7** Put the cutter back into the guard after cleaning (Fig. 19).

**8** Put the shaving heads back into the shaving unit (Fig. 20).

**9** Put the retaining frame back into the shaving unit (1) and turn the orange wheel clockwise (2) (Fig. 21).

**10** Put the shaving unit back onto the shaver (Fig. 13).

### **Storage**

Keep the appliance dry. Use and store the appliance at a temperature between 5°C and 35°C.

**1** Switch off the shaver.

**2** Put the protection cap on the shaver after use to prevent damage and to avoid dirt accumulation in the shaving heads (Fig. 8).

*Note: Make sure that the lug of the protection cap covers the release button.*

**3** Store the shaver in the travel pouch.

### **Replacement**

Replace the shaving heads every two years for optimal shaving results.

Replace damaged or worn shaving heads with Philips shaving heads only (HQ4 for China or HQ56 for the rest of the world). For instructions on how to remove the shaving heads, see chapter 'Cleaning and maintenance', section 'Every two months: shaving heads'.

### **Ordering accessories**

To purchase accessories for this appliance, please visit our online shop at **[www.shop.philips.com/service](http://www.shop.philips.com/service)**. If the online shop is not available in your country, go to your Philips dealer or a Philips service centre. If you have any difficulties obtaining accessories for your appliance, please contact the Philips Consumer Care Centre in your country. You find its contact details in the worldwide guarantee leaflet. You can also visit [www.philips.com/support](http://www.philips.com/support). To retain the top performance of your shaver, make sure you clean it regularly and replace its shaving heads at the recommended time.

### **Shaving heads**

- We advise you to replace your shaving heads every two years. Always replace them with Philips shaving heads only (HQ4 for China or HQ56 for the rest of the world) (Fig. 22).

### **USB wall adapter**

If you would like to purchase a USB wall adapter to be able to charge the shaver from the mains, only buy the Philips USB wall adapter, type HX9200, available through the Philips Consumer Care Centre.

### **Cleaning**

Use Philips Cleaning Spray (HQ110) to clean the shaving heads thoroughly.

### **Environment**

- Do not throw away the appliance with the normal household waste at the end of its life, but hand it in at an official collection point for recycling. By doing this, you help to preserve the environment (Fig. 23).

- The built-in rechargeable battery contains substances that may pollute the environment. Remove the battery before you discard and hand in the appliance at an official collection point.

Dispose of the battery at an official collection point for batteries. If you have trouble removing the battery, you can also take the appliance to a Philips service centre. The staff of this centre will remove the battery for you and will dispose of it in an environmentally safe way (Fig. 24).

### **Removing the rechargeable battery**

**Only remove the rechargeable battery when you discard the shaver. Make sure the battery is completely empty when you remove it.**

**1** Remove the USB plugs from the USB port and the shaver.

**2** Let the shaver run until it stops and undo the screw at the back of the shaver (Fig. 25).

**3** Remove the back panel of the shaver with a screwdriver.

**4** Remove the rechargeable battery.

**Do not connect the shaver to the USB port again after you have removed the battery.**

### **Guarantee and service**

If you need service or information or if you have a problem, please visit the Philips website at **[www.philips.com/support](http://www.philips.com/support)** or contact the Philips Consumer Care Centre in your country. You find its phone number in the worldwide guarantee leaflet. If there is no Consumer Care Centre in your country, go to your local Philips dealer.

### **Guarantee restrictions**

The shaving heads (cutters and guards) are not covered by the terms of the international guarantee because they are subject to wear.

### **Troubleshooting**

This chapter summarises the most common problems you could encounter with the appliance. If you are unable to solve the problem with the information below, visit [www.philips.com/support](http://www.philips.com/support) for a list of frequently asked questions or contact the Consumer Care Centre in your country.

Problem	Possible cause	Solution
The shaver does not shave as well as it used to.	The shaving heads are dirty. You have not cleaned the shaver well enough or you have not cleaned it for a long time.	Clean the shaving heads thoroughly before you continue shaving. See chapter 'Cleaning and maintenance'.
	Long hairs obstruct the shaving heads.	Clean the cutters and guards with the cleaning brush supplied. See chapter 'Cleaning and maintenance', section 'Every two months: shaving heads'.
	You mixed up the cutters and guards when you placed them back into the retaining frame after cleaning.	Put each cutter in the other guard. If you do not switch the cutters, it may take 2 to 3 weeks until optimal shaving performance is restored.
	The shaving heads are damaged or worn.	Replace the shaving heads. See chapter 'Replacement'.
The shaver does not work when I press the on/off button.	The rechargeable battery is empty.	Recharge the battery. See chapter 'Charging'.

Problem	Possible cause	Solution
My skin is irritated after shaving.	Your skin needs time to get used to the Philips shaving system.	Skin irritation during the first 2-3 weeks of use is possible. After this period, the skin irritation usually disappears.
The rotation speed of the shaving heads is slower than usual.	Too much dirt has collected in the shaving heads.	Clean the shaving heads. See chapter 'Cleaning and maintenance'.
	The rechargeable battery is low.	Recharge the battery. See chapter 'Charging'.
The appliance makes a strange noise.	Too much dirt has collected in the shaving heads.	Clean the shaving heads. After cleaning, lubricate the central point on the inside of the guards with Philips Cleaning Spray (HQ110). See chapter 'Cleaning and maintenance'.
	The shaving heads are damaged or worn.	Replace the shaving heads. See chapter 'Replacement'.

Problem	Possible cause	Solution
I want to charge the shaver from the mains, but I do not have a USB wall adapter.		To find out where to purchase a USB wall adapter, contact the Consumer Care Centre in your country. You find its contact details in the worldwide guarantee leaflet. You can also visit <a href="http://www.philips.com/support">www.philips.com/support</a> .

## 繁體中文

### 簡介

感謝您購買本產品並歡迎加入飛利浦！請於 [www.philips.com/welcome](http://www.philips.com/welcome) 註冊您的產品，以善用飛利浦提供的支援。

### 一般說明 (圖 1)

- 1 保護蓋
- 2 電鬚刀刀頭
- 3 除毛刀頭組
- 4 毛髮收集室
- 5 開/關按鈕
- 6 充電指示燈
- 7 USB 插頭用插座
- 8 固定架轉盤
- 9 固定架
- 10 刀具
- 11 刀網
- 12 釋放鈕
- 13 旅行袋
- 14 USB 纜線
- 15 清潔刷
- 16 USB 插頭充電器 (HX9200)\*
- 17 飛利浦噴霧清潔劑 (HQ110)\*

\* 本產品並未隨附這些零件，但您可另外選購。如果您需要 USB 插頭充電器，請僅購買飛利浦 USB 插頭充電器 (機型 HX9200)。請參閱「訂購配件」章節，瞭解有關如何取得 USB 插頭充電器與飛利浦噴霧清潔劑的更多資訊。

### 重要事項

在使用本產品前，請先仔細閱讀本使用手冊，並保留使用手冊以供日後參考。

#### 危險

- 警告：本產品、USB 纜線與 USB 插頭充電器\* 請保持乾燥。
- 此符號表示：禁止在水龍頭下清洗。(圖 2)

#### 警示

- 警告：請勿在浴缸、淋浴間或其他裝水容器附近使用本產品。
- 若您要用充電器為電鬚刀充電，請僅使用飛利浦 USB 插頭充電器\* (機型 HX9200)。
- 在您連接產品電源之前，請先檢查 USB 插頭充電器\* 上所標示的電壓是否與您當地的電源電壓一致。
- 基於安全考慮，在缺乏監督及適當指示之下，本產品不適用於孩童及任何身體、知覺、或心理功能障礙者，或缺乏使用經驗及知識者。
- 請勿讓孩童使用本產品或將本產品當成玩具。

### 警告

- 只能使用 USB 連接埠 (例如電腦、USB 插頭充電器\* 或 USB 充電器) 為產品充電。
- 電鬚刀、USB 纜線或 USB 插頭充電器\* 損壞時，請停止使用。
- 如果 USB 纜線或 USB 插頭充電器\* 損壞時，請務必以同型號的充電器或配件進行更換，以免發生危險。
- 請於 5° C 到 35° C 間充電、使用並存放電鬚刀。
- 使用電鬚刀時，請勿搭配任何刮鬚水、乳液、凝露或其他其他化妝品。

### 符合標準

- 本飛利浦產品符合電磁波 (Electromagnetic fields, EMF) 所有相關標準。只要使用方式正確並依照本使用手冊之說明進行操作，根據現有的科學研究資料，使用本產品並無安全顧慮。
  - 本電鬚刀符合適用的 IEC 安全標準。
- \* 本產品並未隨附 USB 插頭充電器，但您可另外選購。若您要用充電器為電鬚刀充電，請僅使用飛利浦 USB 插頭充電器 (HX9200)。請聯絡客戶服務中心以取得此充電器 (請參閱「訂購配件」章節)。

### 充電

電鬚刀可以使用本產品隨附的 USB 纜線進行充電。您可以將 USB 纜線插入電腦或飛利浦 USB 插頭充電器，後者可供另外選購 (請參閱「訂購配件」章節)。開始充電之前，務必將電鬚刀的電源關閉。當您首次為電鬚刀充電時，或長期未使用後，請讓本產品連續充電 12 小時。一般正常充電約需 8 小時。當馬達停止運轉或運轉開始緩慢時，請為產品充電。為保持最佳效能，只有在電力不足時才為電鬚刀充電。

**不要讓本產品連續連接 USB 連接埠超過 24 小時。**

- 1 將 USB 纜線的插頭插入電鬚刀 (1) 與 USB 連接埠 (2)。(圖 3)
- ▶ 充電指示燈亮起，表示產品正在進行充電。(圖 4)

注意：請將電鬚刀充電至少滿 8 小時，但切勿超過 24 個小時。

- 2 當電池完全充電時，將 USB 插頭拔離電鬚刀 (1) 與 USB 連接埠 (2)。(圖 5)

注意：您無法在電鬚刀連接 USB 連接埠時加以使用。電池耗盡時，您必須先讓電池充電，才能再度使用電鬚刀。

### 無線刮鬚時間

電池充滿的電鬚刀可不插電刮鬚約 30 分鐘。

### 使用此產品

注意：您無法在電鬚刀連接 USB 連接埠時加以使用。

- 1 卸下保護蓋。
- 2 按下 on/off (開關) 按鈕，開啟電鬚刀電源。(圖 6)
- 3 將電鬚刀頭在皮膚上移動，請同時用直線及畫圓的方式來移動。(圖 7)

注意：僅可乾刮。使用電鬚刀時，請勿搭配凝露、泡沫或水。

注意：您的皮膚可能需要 2 到 3 週的時間才能完全適應飛利浦電鬚刀系統。

- 4 按下開/關 (on/off) 按鈕，關閉電鬚刀電源。
- 5 每次刮鬚後，請清潔本電鬚刀 (請參閱「清潔與保養」單元)。
- 6 為電鬚刀蓋上保護蓋以防損壞，並避免污垢累積在刀頭中。(圖 8)

注意：請確實將保護蓋的突耳蓋住釋放鈕。

### 清潔與維護

絕對不可使用鋼絲絨、磨蝕性的清潔劑或侵蝕性的液體 (例如汽油或丙酮) 清潔本產品。

在每次刮鬚之後清潔電鬚刀，以保障更好的刮鬚效果。為達最好的清潔效果，建議您使用飛利浦噴霧清潔劑 (HQ110)。請向您的飛利浦經銷商洽詢相關資訊。

注意：飛利浦電鬚刀刀頭噴霧清潔劑 (HQ110) 並非所有國家都有供應。關於是否有這項配件供應，請與您所在國家的客戶服務中心聯繫。

### 每次刮鬚後：刮鬚刀組與鬚渣室

注意：清潔電鬚刀之前，請先確定已關閉電鬚刀電源，並且拔除 USB 纜線。

- 1 使用隨附的清潔刷清潔產品上方。(圖 9)

- 2 按下釋放鈕 (1) 並將刮鬚刀頭組垂直向上拉起，自電鬚刀上取下 (2)。(圖 10)

- 3 使用隨附的清潔刷清潔刮鬚刀頭組內部。(圖 11)

- 4 使用清潔刷清潔毛髮收集室。(圖 12)

- 5 將電鬚刀組裝回電鬚刀上。(圖 13)
- 每兩個月：電鬚刀頭

注意：請勿使用清潔劑或酒精清潔電鬚刀頭，務必使用飛利浦噴霧清潔劑 (HQ110)。

注意：清潔電鬚刀刀頭之前，請先確定已關閉電鬚刀電源，並且拔除 USB 纜線。

- 1 按下釋放鈕 (1) 並將刮鬚刀頭組垂直向上拉起，自電鬚刀上取下 (2)。(圖 10)
- 2 逆時針方向轉動橘色轉盤 (1)，將固定架拆下 (2)。(圖 14)
- 3 一次取下並清洗一個刀頭。每個電鬚刀頭都是由刀片和刀網組成。(圖 15)

注意：因為刀片及刀網是成對的一組，請勿一次清潔一組以上。如果您不小心將刀片及刀網混在一起，可能要花幾週的時間才能恢復最理想的刮鬚效果。

- 4 取下刀具的刀網。(圖 16)
- 5 請使用清潔刷的短毛側來清潔刀具。請依箭頭方向小心刷動。(圖 17)
- 6 請使用清潔刷的長毛側來清潔刀網。(圖 18)
- 7 清潔後，將刀具放回刀網中。(圖 19)
- 8 將電鬚刀刀頭裝回電鬚刀組。(圖 20)
- 9 將固定架裝回電鬚刀組 (1)，並以順時針方向轉動橘色刮鬚轉盤 (2)。(圖 21)
- 10 將電鬚刀組裝回電鬚刀上。(圖 13)

### 收納

請保持本產品乾燥。請於 5° C 到 35° C 間使用並存放本產品。

- 1 請先關閉電鬚刀電源。
- 2 使用後請為電鬚刀蓋上保護蓋以防損壞，並避免污垢累積在刀頭中。(圖 8)

注意：請確實將保護蓋的突耳蓋住釋放鈕。

- 3 將電鬚刀存放在旅行袋中。

### 更換

每隔兩年更換一次電鬚刀頭，以確保維持最佳的刮鬚效果。損壞或用舊的刀頭限以飛利浦電鬚刀刀頭替換 (中國為 HQ4，其他國家為 HQ56)。有關如何取下電鬚刀頭的說明，請參閱「清潔與維護」單元之「每兩個月：電鬚刀頭」章節。

### 訂購配件

如需購買本產品的配件，請造訪我們的線上商店：[www.shop.philips.com/service](http://www.shop.philips.com/service)。若您所在國家/地區沒有線上商店，請聯絡您的飛利浦經銷商或飛利浦服務中心。如果無法取得產品的配件，請聯絡您所在國家/地區的飛利浦客戶服務中心。如需詳細聯絡資料，請參閱全球保證書。您也可以造訪 [www.philips.com/support](http://www.philips.com/support)。若要維持電鬚刀的最佳效能，請務必定期清潔電鬚刀，並於建議的時間更換電鬚刀刀頭。

### 電鬚刀刀頭

- 建議您每兩年即更換電鬚刀刀頭。限以飛利浦電鬚刀刀頭替換 (中國為 HQ4，其他國家為 HQ56)。(圖 22)

### USB 插頭充電器

若您想要購買能從電源插座為電鬚刀充電的 USB 插頭充電器，請僅透過飛利浦客戶服務中心購買飛利浦 USB 插頭充電器 (機型 HX9200)。

### 清潔

使用飛利浦噴霧清潔劑 (HQ110) 徹底清潔電鬚刀頭。

### 環境保護

- 本產品使用壽命結束時請勿與一般家庭廢棄物一併丟棄。請將該產品放置於政府指定的回收站，此舉能為環保盡一份心力。(圖 23)
- 本產品內建的充電電池可能含有污染環境的物質。丟棄本產品或是將產品放到政府指定的回收站前，請先取出電池，並將電池送到政府指定的電池回收站。若您無法取出電池，可將產品拿到飛利浦服務中心，服務中心的人員會為您卸下電池，並以無害環境的方式處理電池。(圖 24)

### 取出充電電池

棄置本電鬚刀前，請先取出充電電池。當您要取出電池時，請確認其電力已完全耗盡。

- 1 將 USB 插頭拔離 USB 連接埠與電鬚刀。
- 2 讓電鬚刀持續運轉直到完全停止，然後轉開電鬚刀背面的螺絲。(圖 25)
- 3 用螺絲起子拆下電鬚刀的背板。
- 4 取出充電電池。

卸除電池後，請勿再次將電鬚刀連接至 USB 連接埠。

### 保固與服務

若您需要相關服務或資訊，或是有任何問題，請瀏覽飛利浦網站：[www.philips.com/support](http://www.philips.com/support)，或聯絡當地的飛利浦客戶服務中心，您可以在全球保證書上找到聯絡電話。若您當地沒有客戶服務中心，請洽詢當地的飛利浦經銷商。

### 保固限制

電鬚刀刀頭 (刀具和刀網) 由於其耗損性，因此不在全球保固範圍內。

### 故障排除

本章概述您使用本產品時最常遇到的問題。如果您無法利用以下資訊解決您遇到的問題，請造訪 [www.philips.com/support](http://www.philips.com/support)，或聯絡您所在國家/地區的飛利浦客戶服務中心。

問題	可能原因	解決方法
電鬚刀不像平常一樣運作。	電鬚刀刀頭不潔。電鬚刀清潔不夠徹底或是太久沒有清潔。	在您繼續刮鬚前，請徹底清潔電鬚刀頭。請參閱「清潔與維護」單元。
	長鬚鬚卡住電鬚刀頭。	請使用隨附的毛刷清潔刀具及刀網。請參閱「清潔與維護」單元之「每兩個月：電鬚刀頭」小節。
	清潔刀具及刀網後，將其放回固定架時，把刀具及刀網混在一起。	把每一片刀片放入另一個刀網。如果您沒有調換刀片，可能要花 2 到 3 週的時間才能恢復最理想的刮鬚效果。
	電鬚刀刀頭毀壞或磨損。	更換電鬚刀刀頭。請參閱「更換」單元。
我按下開/關 (on/off) 按鈕時，為何電鬚刀不會動作？	充電式電池沒電。	為電池充電。請參閱「充電」單元。
刮鬚之後，皮膚感到刺痛。	您的皮膚需要一些時間才能適應飛利浦電鬚刀系統。	開始使用的第 2 到 3 週，皮膚可能會有過敏現象。過了這段時間，皮膚過敏的症狀通常會消失。
刀頭的旋轉速度比平常緩慢。	過多污垢累積在刀頭中。	請清潔電鬚刀刀頭。請參閱「清潔與維護」單元。

問題	可能原因	解決方法
	充電式電池電力不足。	為電池充電。請參閱「充電」單元。
產品發出奇怪的噪音。	過多污垢累積在刀頭中。	請清潔電鬚刀刀頭。清潔後，請使用飛利浦噴霧清潔劑 (HQ110) 潤滑刀網內側的中心點。請參閱「清潔與維護」單元。
	電鬚刀刀頭毀壞或磨損。	更換電鬚刀刀頭。請參閱「更換」單元。

我想從電源插座為電鬚刀充電，但我沒有 USB 插頭充電器。

若要尋找可購買 USB 插頭充電器的地點，請聯絡您所在國家/地區的客户服務中心。如需詳細聯絡資料，請參閱全球保證書。您也可以造訪 [www.philips.com/support](http://www.philips.com/support)。