

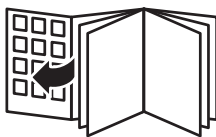
**PHILIPS**

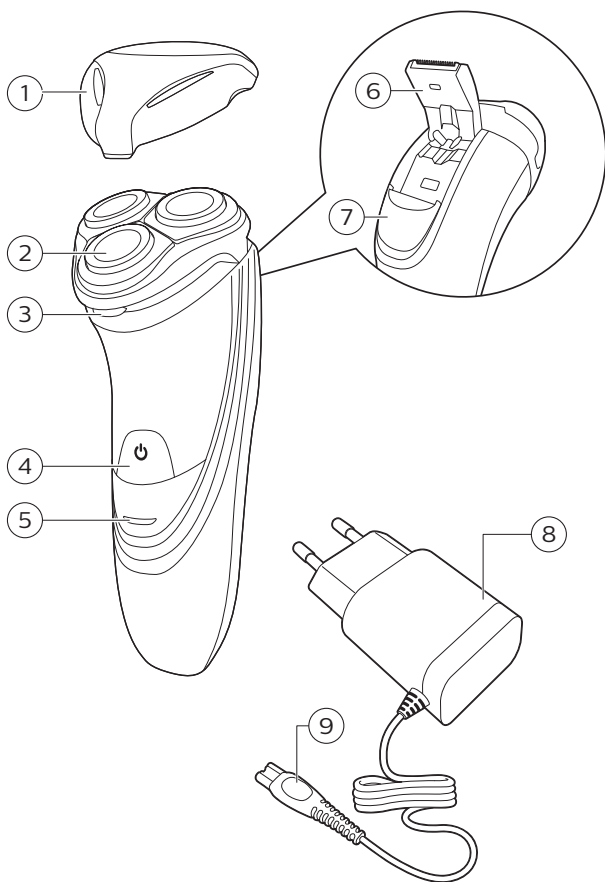
S1560



**PHILIPS**

Series 1000







**English 6**

简体中文 **20**

## Introduction

Congratulations on your purchase and welcome to Philips! To fully benefit from the support that Philips offers, register your product at [www.philips.com/welcome](http://www.philips.com/welcome).

## General description (Fig. 1)

- 1 Protection cap
- 2 Shaving unit
- 3 Shaving unit release button
- 4 On/off button
- 5 Charging light
- 6 Trimmer
- 7 Trimmer release slide
- 8 Supply unit
- 9 Small plugs

## Important safety information

Read this important information carefully before you use the appliance and its accessories and save it for future reference. The accessories supplied may vary for different products.

### Danger



- Keep the supply unit dry.
- This symbol means: Forbidden to clean under a running tap.

### Warning

- To charge the battery, only use the detachable supply unit (HQ850) provided with the appliance.

- The supply unit contains a transformer. Do not cut off the supply unit to replace it with another plug, as this causes a hazardous situation.
- This appliance can be used by children aged from 8 years and above and persons with reduced physical, sensory or mental capabilities or lack of experience and knowledge if they have been given supervision or instruction concerning use of the appliance in a safe way and understand the hazards involved. Children shall not play with the appliance. Cleaning and user maintenance shall not be made by children without supervision.
- Always unplug the shaver before you clean it under the tap.
- Always check the appliance before you use it. Do not use the appliance if it is damaged, as this may cause injury. Always replace a damaged part with one of the original type.
- Do not open the appliance to replace the rechargeable battery.

## Caution

- Never immerse the shaver in water. Do not use the shaver in the bath or in the shower.
- Never use water hotter than 60°C to rinse the shaver.
- Only use this appliance for its intended purpose as shown in the user manual.
- For hygienic reasons, the appliance should only be used by one person.
- Never use compressed air, scouring pads, abrasive cleaning agents or aggressive liquids such as petrol or acetone to clean the appliance.

- Water may drip from the socket at the bottom of the shaver when you rinse it. This is normal and not dangerous because all electronics are enclosed in a sealed power unit inside the shaver.
- Do not use the supply unit in or near wall sockets that contain an electric air freshener to prevent irreparable damage to the supply unit.

## Electromagnetic fields (EMF)

- This Philips appliance complies with all applicable standards and regulations regarding exposure to electromagnetic fields.

## General



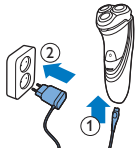
- This shaver can be safely cleaned under the tap.
- This symbol means: Suitable to be cleaned under a running tap.
- The appliance is suitable for mains voltages ranging from 100 to 240 volts.
- The supply unit transforms 100-240 volts to a safe low voltage of less than 24 volts.

## Charging

It takes approx. 8 hours to fully charge the appliance. When you charge the appliance for the first time or after a long period of non-use, let it charge until the charging light lights up continuously. A fully charged appliance provides up to 40 minutes of shaving time. The shaving time may be less than 40 minutes as a result of your shaving behavior, your cleaning habits or your beard type.



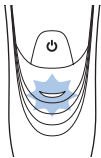
## Charging with the supply unit S1560



- 1 Put the small plug in the appliance.
- 2 Put the supply unit in the wall socket.
  - The charging light shows the charging status of the appliance (see 'Charge indications').
- 3 After charging, remove the supply unit from the wall socket and pull the small plug out of the appliance.

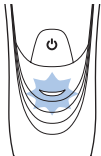
## Charge indications

### Battery low



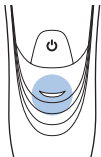
- When the battery is almost empty (when there are only 5 or fewer shaving minutes left), the charging light starts to flash orange.
- When the battery is completely empty, the charging light starts to flash orange quickly.
- When you switch off the appliance, the charging light continues to flash orange for a few seconds.

### Charging



- When the appliance is charging, the charging light flashes green.

### Battery fully charged



- When the battery is fully charged, the charging light lights up green continuously.

**Note:** After approx. 30 minutes, the charging light goes out to save energy.

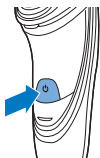
## Using the appliance

Note: This appliance can only be used without cord.

### Skin adaptation period

Your first shaves may not bring you the result you expect and your skin may even become slightly irritated. This is normal. Your skin and beard need time to adapt to any new shaving system. To allow your skin to adapt to this new appliance, we advise you to shave regularly (at least 3 times a week) and exclusively with this appliance for a period of 3 weeks.

### Switching the appliance on and off



- 1 To switch the appliance on or off, press the on/off button once.

### Shaving

To ensure the best result, we advise you to pre-trim your beard if you have not shaved for 3 days or longer.



- 1 Switch on the appliance.
- 2 Move the shaving heads over your skin in both straight and circular movements to catch all hairs growing in different directions. Exert gentle pressure for a close comfortable shave.

Note: Do not press too hard, this can cause skin irritation.

- 3 After shaving, switch off the appliance.
- 4 Clean the appliance.

## Trimming

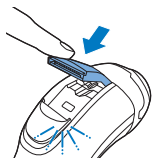
You can use the trimmer to groom your sideburns and moustache.



- 1 Push the trimmer release slide downwards to open the trimmer.
- 2 Switch on the appliance.



- 3 Hold the trimmer perpendicular to the skin and move the appliance downwards while you exert gentle pressure.
- 4 After trimming, switch off the appliance.
- 5 Clean the trimmer.



- 6 Close the trimmer ('click').

## Cleaning and maintenance

**Caution: Never use compressed air, scouring pads, abrasive cleaning agents or aggressive liquids such as petrol or acetone to clean the appliance.**

**Caution: Be careful with hot water. Always check if the water is not too hot, to prevent burning your hands.**

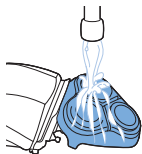
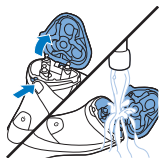
- Clean the appliance after every shave for optimal shaving performance.
- Regular cleaning guarantees better shaving performance.

## 12 English

- For the best cleaning results, we advise you to use Philips Cleaning spray (HQ110).
- Never dry the shaving unit with a towel or tissue, as this may damage the shaving heads.

### Cleaning the shaving unit under the tap

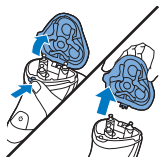
- 1 Switch off the shaver and disconnect it from the wall socket.
- 2 Press the unit release button to open the shaving unit.
- 3 Rinse the shaving unit and hair chamber under a warm tap.

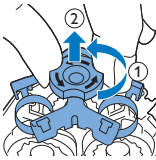


- 4 Rinse the outside of the shaving unit under a warm tap.
- 5 Carefully shake off excess water and let the appliance air dry.
- 6 Close the shaving unit.

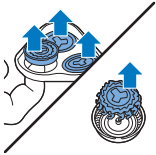
### Cleaning the shaving heads under the tap

- 1 Switch off the shaver and disconnect it from the wall socket.
- 2 Press the shaving unit release button to open the shaving unit. Pull the shaving unit off the appliance.

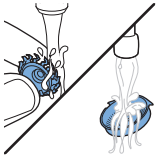




- 3** Turn the lock anticlockwise (1) and remove the retaining frame (2).



- 4** Remove and clean one shaving head at a time. Each shaving head consists of a cutter and a guard.



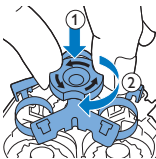
- 5** Remove the cutter from the shaving guard and clean both parts under the tap.

Note: Do not clean more than one cutter and guard at a time, since they are all matching sets. If you accidentally mix up the cutters and guards, it may take several weeks before optimal shaving performance is restored.



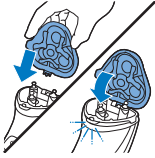
- 6** Put the shaving heads back into the shaving unit.

Note: Make sure the notches on both sides of the shaving heads fit exactly onto the projections in the shaving head holder.



- 7** Put the retaining frame back into the shaving unit (1) and turn the lock clockwise (2).

## 14 English



- 8 Insert the lug of the shaving unit into the slot in the top of the shaver. Then close the shaving unit.

Note: If the shaving unit does not close smoothly, check if you have inserted the shaving heads properly and if the retaining frame is locked.

## Cleaning the trimmer

Clean the trimmer every time you have used it.

- 1 Switch off the shaver and disconnect it from the wall socket.
- 2 Push the trimmer release slide downwards to open the trimmer.



- 3 Switch on the appliance and rinse the trimmer under the tap.
- 4 After cleaning, switch off the appliance.
- 5 Carefully shake off excess water and let the trimmer dry.
- 6 Close the trimmer ('click').



Tip: For optimal trimming performance, lubricate the trimmer teeth with a drop of sewing machine oil regularly.

## Storage



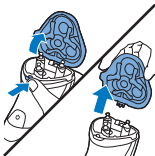
Put the protection cap on the shaver to prevent damage.

## Replacement

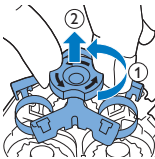


For maximum shaving performance, we advise you to replace the shaving heads every two years. Replace damaged shaving heads immediately. Always replace the shaving heads with original Philips shaving heads.

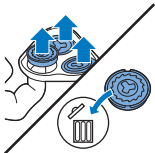
- 1 Switch off the shaver and disconnect it from the wall socket.
- 2 Press the shaving unit release button to open the shaving unit. Pull the shaving unit off the appliance.



- 3 Turn the lock anticlockwise (1) and remove the retaining frame (2).

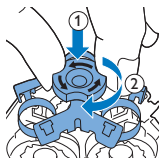


- 4 Remove the shaving heads from the shaving unit and throw them away.
- 5 Place new shaving heads in the shaving unit.

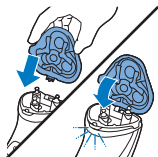


Note: Make sure the notches on both sides of the shaving heads fit exactly onto the projections in the shaving head holder.

## 16 English



- 6** Put the retaining frame back into the shaving unit (1) and turn the lock clockwise (2).



- 7** Insert the lug of the shaving unit into the slot in the top of the shaver. Then close the shaving unit.

Note: If the shaving unit does not close smoothly, check if you have inserted the shaving heads properly and if the retaining frame is locked.

## Ordering accessories

To buy accessories or spare parts, visit [www.shop.philips.com/service](http://www.shop.philips.com/service) or go to your Philips dealer. You can also contact the Philips Consumer Care Center in your country (see the international warranty leaflet for contact details).

The following accessories and spare parts are available:

- SH30 Philips Shaving Heads.
- HQ110 Philips shaving head cleaning spray

## Recycling

- Do not throw away the product with the normal household waste at the end of its life, but hand it in at an official collection point for recycling. By doing this, you help to preserve the environment.



- This product contains a built-in rechargeable battery which shall not be disposed of with normal household waste. We strongly advise you to take your product to an official collection point or a Philips service centre to have a professional remove the rechargeable battery.
- Follow your country's rules for the separate collection of electrical and electronic products and rechargeable batteries. Correct disposal helps prevent negative consequences for the environment and human health.
- 该表格中所显示的“有害物质”在产品正常使用情况下不会对人身和环境产生任何伤害。
- 该表格中所显示的“有害物质”及其存在的部件向消费者和回收处理从业者提供相关物质的存在信息，有助于产品废弃时的妥善处理。

## Removing the rechargeable battery

### Removing the rechargeable battery

**Only remove the rechargeable battery when you discard the shaver. Before you remove the battery, make sure that the shaver is disconnected from the wall socket and that the battery is completely empty**

**Take any necessary safety precautions when you handle tools to open the shaver and when you dispose of the rechargeable battery.**

- 1 Check if there are screws in the back of the shaver or in the hair chamber. If so, remove them.

- 2 Remove the outer panels of the shaver with a screwdriver or other tool. If necessary, also remove additional screws and/or parts until you see the printed circuit board with the rechargeable battery.
- 3 Remove the rechargeable battery.

## Warranty and support

If you need information or support, please visit **[www.philips.com/support](http://www.philips.com/support)** or read the international warranty leaflet.

## Troubleshooting

This chapter summarizes the most common problems you could encounter with the appliance. If you are unable to solve the problem with the information below, visit **[www.philips.com/support](http://www.philips.com/support)** for a list of frequently asked questions or contact the Consumer Care Center in your country.

| Problem   | Possible cause                                    | Solution  |
|---|---|---|
| The appliance does not shave as well as it used to.         | The shaving heads are damaged or worn.            | Replace the shaving heads (see ' ').  |
|   | Long hairs obstruct the shaving heads.            | Clean the shaving heads one by one.   |
|   | You have not inserted the shaving heads properly. | Make sure the notches on both sides of the shaving heads fit exactly onto the projections in the shaving-head holder. |
| The appliance does not work when I press the on/off button. | The appliance is connected to the wall socket.    | This appliance can only be used without cord.   |

| <b>Problem</b> | <b>Possible cause</b>  | <b>Solution</b>  |
|----------------|--|--|
|                | The rechargeable battery is empty.   | Recharge the battery (see ' ').  |
|                | The temperature of the appliance is too high. In this case, the appliance does not work. | As soon as the temperature of the appliance has dropped sufficiently, you can switch on the appliance again. |

## 说明

感谢您的惠顾，欢迎光临飞利浦！为了让您能充分享受飞利浦提供的支持，请在 [www.philips.com/welcome](http://www.philips.com/welcome) 上注册您的产品。

## 基本说明（图 1）

- 1 保护盖
- 2 剃毛刀头部件
- 3 剃须刀头部件释放按钮
- 4 开/关按钮
- 5 充电指示灯
- 6 修剪器
- 7 修发器释放滑块
- 8 电源部件
- 9 小插头

## 重要安全信息

使用本产品及其附件之前，请仔细阅读本重要信息，并妥善保管以供日后参考。随附的附件可能因产品而异。

## 危险



- 保持电源部件干燥。
- 警告符号注释：禁止在打开的水龙头下进行清洗。

## 警告

- 要给电池充电，请仅使用产品随附的可拆卸电源部件 (HQ850)。
- 电源部件中包含一个变压器。请勿自行更换电源部件的插头，否则将导致严重后果。

- 本产品也可以由 8 岁或以上年龄的儿童以及肢体不健全、感觉或精神上有障碍或缺乏相关经验和知识的人士使用，但前提是有人对他们使用本产品进行监督或指导，以确保他们安全使用，并且让他们明白相关的危害。切勿让儿童玩弄本产品。不要让儿童在无人监督的情况下对本产品进行清洁和保养。
- 将剃须刀手持部分与电源软线分开后，才能在水龙头下清洗手持部分。
- 使用前，请务必检查产品。请勿使用损坏的产品，否则可能对人体造成伤害。请务必用原装型号更换损坏的部件。
- 切勿拆开本产品更换充电电池。

## 警告

- 切勿将剃须刀浸入水中。切勿在洗澡或淋浴时使用剃须刀。
- 切勿使用温度高于 60°C 的热水冲洗剃须刀。
- 只能将本产品用于用户手册中所示的原定用途。
- 出于卫生的目的，本产品只能供一个人使用。
- 切勿使用压缩气体、钢丝绒、研磨性清洁剂或腐蚀性液体（例如汽油或丙酮）来清洁产品。
- 冲洗剃须刀时，水可能从产品底部的插口漏出。这是正常的，而且没有危险，因为所有电子元件都封闭在剃须刀内部的密封电源部件中。
- 请勿在包含电动空气清新器的墙壁插座上或其周围使用电源部件，以免电源部件受到不可修复的损坏。

## 电磁场 (EMF)

- 本 Philips 产品符合所有有关暴露于电磁场的适用标准和法规。

## 概述

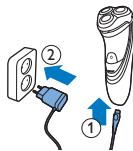


- 这款剃须刀可放心在水龙头下清洗。
- 符号注释：适合用在打开的水龙头下进行清洗。
- 本产品适合在 100 - 240 伏的电源电压下工作。
- 该电源部件可将 100-240 伏的电压转换为 24 伏以下的安全低电压。

## 充电

本产品充满电大约需要 8 小时。如果是首次为产品充电，或长时间未使用后充电，应对其连续充电，直到充电指示灯持续亮起。充满电的产品可提供长达 40 分钟的剃须时间。剃须时间可能会因剃须操作、清洁习惯或胡须类型的差异而少于 40 分钟。

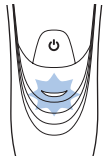
### 使用电源部件充电 S1560



- 1 将小插头插入产品。
- 2 将电源部件插入电源插座。
  - 充电指示灯显示产品 (请参见 '充电指示') 的充电状态。
- 3 充电之后，从电源插座上拔下电源部件，并从本产品上拔下小插头。

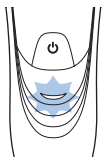
## 充电指示

### 电池电量不足



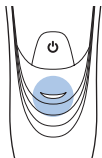
- 当电池电量快要耗尽时（仅剩 5 分钟或更少的剃须时间），充电指示灯将开始呈橙色闪烁。
- 电池电量完全耗尽时，充电指示灯开始呈橙色快速闪烁。
- 关闭产品时，充电指示灯将持续呈橙色闪烁几秒钟。

## 充电



- 产品充电期间，充电指示灯将呈蓝绿色闪烁。

## 电池已完全充满



- 电池充满电时，充电指示灯将持续亮起绿灯。

**注意：** 大约 30 分钟后，充电指示灯熄灭以节省能源。

## 使用本产品

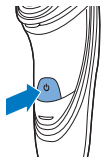
### 使用本产品

**注意：** 本产品只能在不接电源的情况下使用。

### 皮肤适应期

前几次剃须可能不会带给您预期效果，并且您的皮肤可能会受到轻度刺激。这是正常的。您的皮肤和胡须需要时间适应任何新的剃须系统。为了让您的皮肤适应这款新产品，我们建议您在 3 周时间内定期（至少每周 3 次）仅使用本产品剃须。

### 打开或关闭产品



- 1 要打开或关闭本产品，请按一下开/关按钮。

## 剃须



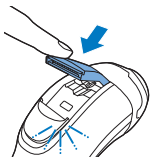
为确保获得最佳效果，如果您 3 天或更长时间没有剃须，我们建议您预先修剪胡须。

- 1 启动产品。
- 2 让剃须刀头在您的皮肤上作直线和迂回运动，以刮剃向不同方向生长的所有胡须。轻轻按压，以获取舒适贴面的剃须感受。

注意：不要用力按压剃须刀，这样做可能会导致皮肤受刺激。

- 3 剃须后，请关闭本产品。
- 4 清洁产品。

## 修发



您可使用修剪器修剪鬓角和须髥。

- 1 向下推修剪器的释放滑块可打开修剪器。
- 2 启动产品。

- 3 将修剪器垂直放在皮肤上，向下移动产品，同时轻轻按压。
- 4 修剪后，请关闭产品。
- 5 清洁修剪器。

- 6 关闭修剪器（可听到“咔哒”一声）。



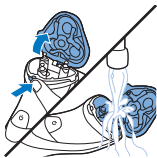
## 清洁和保养

**警告：**切勿使用压缩气体、钢丝绒、研磨性清洁剂或腐蚀性液体（例如汽油或丙酮）清洁本产品。

**警告：**使用热水要当心。切记先检查水温是否太高，以防烫手。

- 每次剃须后清洁产品，以获得最佳的剃须效果。
- 为保证更好的剃须效果，剃须刀必须定期清洗。
- 为了获得最佳的清洁效果，建议您使用飞利浦清洁喷雾剂 (HQ110)。
- 不要用毛巾或纸巾擦拭剃须刀头部件，因为这样可能会损坏剃须刀头。

### 在水龙头下冲洗剃须刀头部件

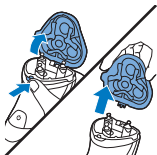


- 1 关闭剃须刀并与电源插座断开连接。
- 2 按下部件释放按钮，打开剃须刀头部件。
- 3 在热水龙头下冲洗剃须刀头部件和胡茬储藏室。



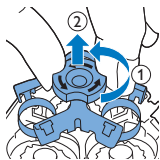
- 4 用温自来水冲洗剃须刀头部件的外部。
- 5 小心甩干多余的水，然后将产品晾干。
- 6 关闭剃须刀头部件。

### 在水龙头下冲洗剃须刀头

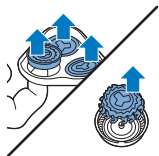


- 1 关闭剃须刀并与电源插座断开连接。
- 2 按下剃须刀头部件释放按钮，打开剃须刀头部件。将剃毛刀头部件拉出产品。

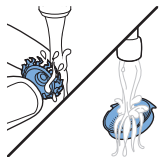
## 26 简体中文



3 逆时针转动锁 (1)，取下固定架 (2)。



4 一次取下并清洁一个剃须刀头。每个剃须刀头包含一组刀片和网罩。



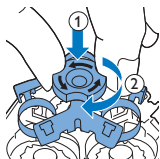
5 从网罩取下刀片并在水龙头下清洁这两个部件。

注意：不要同时清洁多组刀片和网罩，因为它们都是相互匹配的。如果不小心将剃须刀头的刀片和网罩弄混，则需要数周时间才能恢复产品的最佳剃须效果。

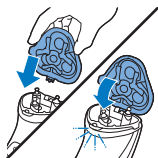


6 将剃须刀头重新放入剃须刀头部件。

注意：确保剃须刀头两侧的槽口正好卡入剃须刀头支架上的凸起部位。



7 将固定架放回剃须刀头部件 (1)，并沿顺时针方向转动并锁住 (2)。



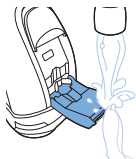
## 清洁修发器

- 8 将剃须刀头部件的凸缘插入剃须刀顶部的槽内。然后关闭剃须刀头部件。

注意：如果剃须刀头部件关闭不畅，请检查剃须刀头插入是否正确，固定架是否被锁住。

每次使用后都要清洁修剪器。

- 1 关闭剃须刀并与电源插座断开连接。
- 2 向下推修剪器的释放滑块可打开修剪器。



- 3 启动产品，并在水龙头下冲洗修剪器。
- 4 清洁完成后，关闭产品。
- 5 小心地甩干多余的水，然后将修剪器晾干。
- 6 关闭修剪器（可听到“咔哒”一声）。



提示：为获得最佳修剪效果，请定期用随附的润滑油涂抹在刀头上进行保养。

## 存放



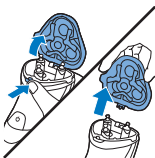
盖上剃须刀保护盖，以防受损。

## 更换

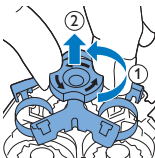


为获得最佳剃须效果，建议每两年更换一次剃须刀头。立即更换损坏的剃须刀头。务必使用原装飞利浦剃须刀头进行更换。

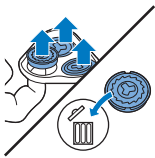
1 关闭剃须刀并与电源插座断开连接。



2 按下剃须刀头部件释放按钮，打开剃须刀头部件。将剃须刀头部件拉出产品。



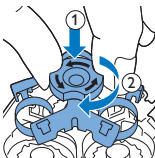
3 逆时针转动锁 (1)，取下固定架 (2)。



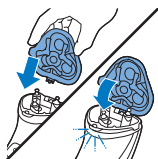
4 将剃须刀头从剃须刀头部件上卸下并丢弃。

5 将新的剃须刀头放在剃须刀头部件中。

注意：确保剃须刀头两侧的槽口正好卡入剃须刀头支架上的凸起部位。



6 将固定架放回剃须刀头部件 (1)，并沿顺时针方向转动并锁住 (2)。



- 7 将剃须刀头部件的凸缘插入剃须刀顶部的槽内。然后关闭剃须刀头部件。

注意：如果剃须刀头部件关闭不畅，请检查剃须刀头插入是否正确，固定架是否被锁住。

## 订购配件

要购买附件或备件，请访问 [www.shop.philips.com/service](http://www.shop.philips.com/service) 或联系您的飞利浦经销商。您还可以联系所在国家/地区的飞利浦客户服务中心（请参阅全球保修卡了解详细联系信息）。

可选配以下附件和备件：

- SH30 飞利浦剃须刀头。
- HQ110 飞利浦剃须刀头清洁喷雾剂

## 回收

- 弃置本产品时，请不要将其与一般生活垃圾放在一起，应将其交给政府指定的回收中心。这样做将有利于环保。
- 此产品包含内置充电电池；请勿将充电电池与一般生活垃圾一起弃置。强烈建议您将自己的产品送到官方收集点或飞利浦服务中心，让专业人士移除充电电池。
- 遵循您的国家/地区有关分类回收电子电气产品和充电电池的规定。正确弃置产品有助于避免对环境和人类健康造成不良后果。

| 部件名称  | 产品中有害物质的名称及含量 |        |        |               |            |              |
|---|---------------|--------|--------|---------------|------------|--------------|
|   | 有害物质          |        |        |               |            |              |
|   | 铅 (Pb)        | 汞 (Hg) | 镉 (Cd) | 六价铬 (Cr (VI)) | 多溴联苯 (PBB) | 多溴二苯醚 (PBDE) |
| Internal metal parts<br>内部金属件                   | X             | O      | O      | O             | O          | O            |
| 本表格依据SJ/T 11364的规定编制。                           |               |        |        |               |            |              |
| O: 表示该有害物质在该部件所有均质材料中的含量均在GB/T 26572规定的限量要求以下。  |               |        |        |               |            |              |
| X: 表示该有害物质至少在该部件的某一均质材料中的含量超出GB/T 26572规定的限量要求。 |               |        |        |               |            |              |

- 该表格中所显示的“有害物质”在产品正常使用情况下不会对人身和环境产生任何伤害。

- 该表格中所显示的“有害物质”及其存在的部件向消费者和回收处理从业者提供相关物质的存在信息，有助于产品废弃时的妥善处理。

## 拆下充电电池

### 拆下充电电池

仅在丢弃剃须刀时方可拆下充电电池。拆下电池之前，请确保剃须刀与插座断开连接，并且电池电量已耗尽

在您使用工具打开剃须刀时，以及在您丢弃充电电池时，请采取必要的安全保护措施。

- 1 检查剃须刀背面或胡茬储藏室中是否有螺钉。如果有，请将其拆下。
- 2 使用螺丝刀或其他工具拆下剃须刀的外面板。必要时还需要拆下更多的螺丝和/或部件，直到您看见装有充电电池的印刷电路板为止。
- 3 拆下充电电池。

## 保修和支持

如需信息或支持，请访问 [www.philips.com/support](http://www.philips.com/support) 或阅读国际保修卡。

## 故障种类和处理方法

本章归纳了使用本产品时最常见的一些问题。如果您无法根据以下信息解决问题，请访问 [www.philips.com/support](http://www.philips.com/support) 查阅常见问题列表，或联系您所在国家/地区的客户服务中心。

| 问题            | 可能的原因       | 解决方法            |
|---------------|-------------|-----------------|
| 产品的剃须效果没有以前好。 | 剃须刀头已损坏或磨损。 | 更换剃须刀头 (请参见 '。) |

| 问题              | 可能的原因              | 解决方法                         |
|-----------------|--------------------|------------------------------|
|                 | 较长的胡须堵塞了剃须刀头。      | 逐一清洁剃须刀头。                    |
|                 | 您没有正确插入剃须刀头。       | 确保剃须刀头两侧的槽口正好卡入剃须刀头支架上的凸起部位。 |
| 按下开/关按钮时，产品不工作。 | 产品连接了电源插座。         | 本产品只能在不接电源的情况下使用。            |
|                 | 充电电池的电量已耗尽。        | 给电池 (请参见 ' ) 充电。             |
|                 | 产品的温度过高。此时，产品无法工作。 | 一旦产品降到足够低的温度，便可重新打开产品。       |

## PHILIPS

产品 : 飞利浦电动剃须刀  
 型号 : S1560  
 额定电压 : 220V~  
 额定频率 : 50Hz  
 额定输入功率: 2 W  
 产地 : 荷兰  
 生产日期 : 请见产品本体



制造商: 飞利浦电子香港有限公司  
 香港新界沙田香港科学园科技道东五号

经销单位: 飞利浦 (中国) 投资有限公司  
 上海市天目西路218号1602-1605  
 全国顾客服务热线: 4008 800 008

本产品根据国标 GB4706.1-2005,  
 GB4706.9-2008制造

保留备用

发行日期: 14/4/2017

— |

| —

— |

| —



— |

| —

— |

| —

— |

| —


— |

| —





© 2017 Koninklijke Philips N.V.  
All rights reserved  
4222.002.7334.2 (14/4/2017)

 >75% recycled paper  
>75% papier recyclé