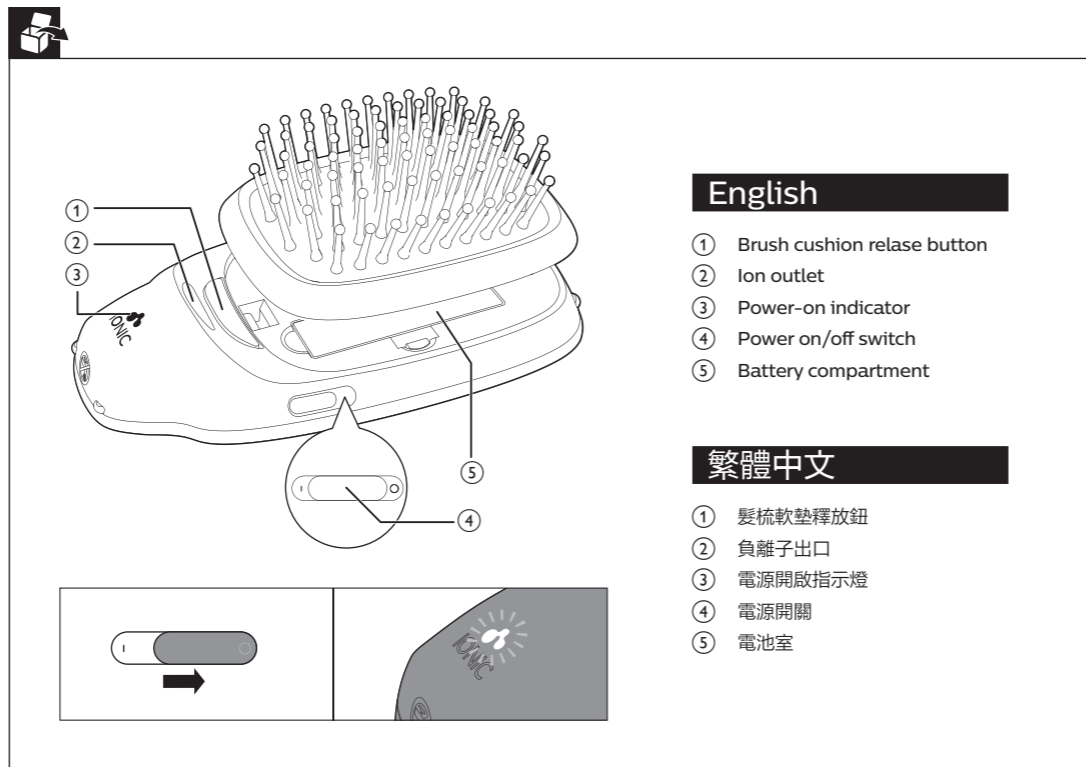


HP4722



EN User manual ZH-HK 使用手冊

PHILIPS



English

- ① Brush cushion release button
- ② Ion outlet
- ③ Power-on indicator
- ④ Power on/off switch
- ⑤ Battery compartment

繁體中文

- ① 髮梳軟墊釋放鈕
- ② 負離子出口
- ③ 電源開啟指示燈
- ④ 電源開關
- ⑤ 電池室

English

Congratulations on your purchase, and welcome to Philips!
 To fully benefit from the support that Philips offers, register your product at www.philips.com/welcome.

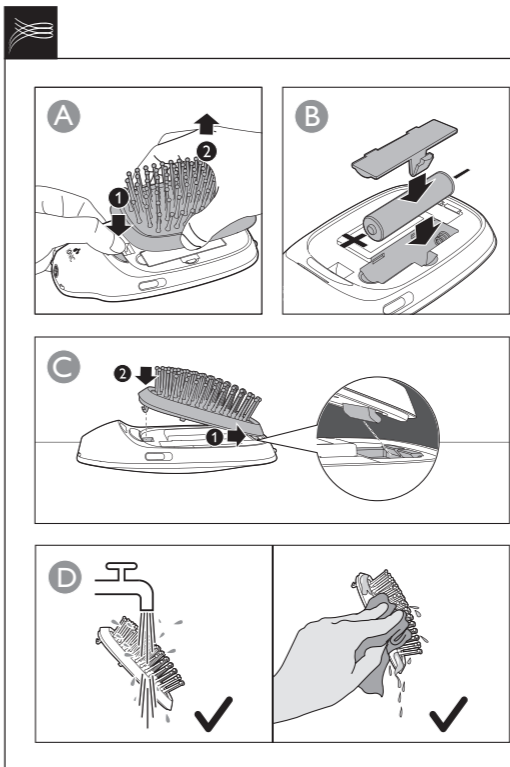
1 Important

Read this user manual carefully before you use the appliance and keep it for future reference.

- **WARNING:** Do not use this appliance near water.
- Never immerse the brush body in water or any other liquid, nor rinse it under the tap.
- Always switch off the appliance after use.
- This appliance can be used by children aged from 8 years and above and persons with reduced physical, sensory or mental capabilities or lack of experience and knowledge

if they have been given supervision or instruction concerning use of the appliance in a safe way and understand the hazards involved.

- Children shall not play with the appliance. Cleaning and user maintenance shall not be made by children without supervision.
- Always return the appliance to a service centre authorized by Philips for examination or repair. Repair by unqualified people could result in an extremely hazardous situation for the user.
- Never use any accessories or parts from other manufacturers or that Philips does not specifically recommend. If you use such accessories or



parts, your guarantee becomes invalid.

- Do not use the appliance for any other purpose than described in this manual.
- Do not use the appliance on artificial hair.
- Never block the ion outlet.
- Do not insert metal objects into the ion outlet to avoid unexpected dangers.
- Do not use this ion brush together with hairdryer for styling purpose.
- Never rinse the brush body under tap water.
- Do not expose the brush under sunlight for long period of time. The ultraviolet ray may lead to

aging in the brush, which the product can break easily.

- Use and store the appliance at a temperature between 15°C and 35°C.
- The appliance runs on one 1.5V AAA alkaline battery.
- Open battery compartment in order to install or remove the battery.
- The bypack battery is not rechargeable. Non-rechargeable batteries are not to be recharged.
- The rechargeable battery must be removed out of the appliance before being charged.
- Batteries are to be inserted with the correct polarity.
- Exhausted batteries are to be removed from the appliance and safely disposed of.
- If the appliance is to be stored unused for a long period, the batteries should be removed.
- The supply terminals are not to be short-circuited.

Electromagnetic fields (EMF)

This Philips appliance complies with all applicable standards and regulations regarding exposure to electromagnetic fields.

Recycling

This symbol means that this product shall not be disposed of with normal household waste (2012/19/EU). This symbol means that this product contains disposable batteries which shall not be disposed of with normal household waste (2006/66/EC).

Follow your country's rules for the separate collection of electrical and electronic products and batteries. Correct disposal helps prevent negative consequences for the environment and human health.



Removing disposable batteries

To remove disposable batteries, see the instructions for placing and/or removing batteries in the user manual.

Note

- Make sure the brush cushion is completely dried before re-attaching to the brush body.
- Never use corrosive liquid to clean the brush cushion as it may cause damage to the product. It is recommended to use household cleanser to clean the brush cushion if needed.
- You may hear a sizzling sound. It's common because it is caused by the ion generator.

Tips & Tricks

- 1 The ionic brush performs better when the hair is slightly wet.
- 2 If you wish to use the brush after washing your hair, dry your hair until 70% dry. Do not over dry your hair because it may affect the result.
- 3 Comb your hair slowly and repeatedly from the root until your hair is smooth. The time to comb varies according to your hair type and length.
- 4 It is not easy to observe the effect if:
 - you have short or natural curly hair.
 - your hair is easy to curl.
 - your hair condition is too dry or damaged.
 - you have straightening perm within 3 to 4 months.
 - you have some short newly grown hair.
- 5 Apply leave in hair conditioner to your hair after brushing for best result.

2 Guarantee and service

If you need information e.g. about replacement of an attachment or if you have a problem, please visit the Philips website at www.philips.com/support or contact the Philips Customer Care Centre in your country (you find its phone number in the worldwide guarantee leaflet). If there is no Consumer Care Centre in your country, go to your local Philips dealer.

The bristle has a guarantee period of 3 months. If needed, you may purchase a separate bristle from Philips service center.

繁體中文

感謝您購買本產品。歡迎來到飛利浦的世界！請至 www.philips.com/welcome 註冊您的產品，以獲得飛利浦提供的完整支援。

1 重要事項

使用產品前，請先仔細閱讀本使用手冊，並保留說明以供日後參考。

- **警告：**請勿在靠近水的地方使用本產品。
- 請勿將梳子本體浸入水中或其他液體內，也不要在水龍頭下沖洗。

- 使用完畢後，務必關閉產品電源。
- 本產品可供 8 歲以上孩童及身體、知覺或精神能力障礙者或經驗與知識缺乏者使用，但需向他們提供安全使用產品相關的監督或指示說明，且他們必須瞭解可能發生的危險。
- 請勿讓孩童把玩產品。若無人在旁監督，不得讓孩童清潔與維護產品。
- 請務必將產品送回飛利浦授權之服務中心進行檢查或維修。由不合格人員進行維修可能會對使用者造成極端危險。
- 請勿使用其他製造商的任何配件或零件，或非由飛利浦建議之配件或零件。如果您使用此類配件或零件，保固即會失效。
- 請勿將產品用於本手冊所述之外的任何其他用途。
- 請勿在假髮上使用本產品。
- 不可阻塞負離子出口。
- 請勿將金屬物品插入負離子出口內，以避免意外危險。
- 請勿為了作造型而搭配吹風機使用本負離子梳。
- 請勿以自來水沖洗梳子本體。
- 請勿將梳子長時間曝曬於陽光下。紫外線可能會導致梳子老化，使產品變得易碎。
- 產品的使用與存放溫度應介於 15°C 到 35°C 之間。
- 本產品使用一個 1.5V AAA 鹼性電池。
- 打開電池盒以安裝或取出電池。
- 隨附的電池不是充電式電池。非充電式電池不可充電。
- 充電前必須將充電式電池從產品中取出。

- 電池需以正確極性安裝。
- 請先自產品取出電力耗盡的電池，再以安全的方式丟棄。
- 如將有一段時間不會使用產品而需加以收納，務請取出電池。
- 供電終端不可短路。

電磁場 (EMF)

本飛利浦產品符合所有電磁場暴露的相關適用標準和法規。

回收

此符號表示本產品不得與一般家用廢棄物一併丟棄 (2012/19/EU)。此符號表示本產品所含拋棄式電池不得與一般家用廢棄物一併丟棄 (2006/66/EC)。

請遵循您所在國家/地區對電氣與電子產品及電池的分類收集規定。正確處理廢棄產品有助於避免對環境和人類健康帶來負面影響。

取出拋棄式電池

若要取出拋棄式電池，請參閱使用手冊中裝上及/或取出電池的相關指示。

備註

- 請確定髮梳軟墊已完全乾燥後，再將其重新裝回梳子本體。
- 請勿以腐蝕性液體清潔梳子髮梳軟墊，否則可能會造成產品損壞。如有需要，建議您使用家用清潔劑清潔髮梳軟墊。
- 您可能會聽見嘶嘶聲。這是負離子產生器所發出的正常聲響。

秘訣和技巧

- 1 在頭髮微濕時使用負離子梳效果更佳。
- 2 若要在洗髮後使用此梳，請將頭髮吹至七成乾。頭髮不要吹得太乾，不然可能會影響效果。
- 3 從髮根反覆慢慢梳理頭髮，直到頭髮變得柔順。梳理時間依髮質和髮長而異。
- 4 如有下列情況，效果可能不明顯：
 - 您是短髮或有自然捲。
 - 您的頭髮容易捲曲。
 - 您的頭髮太乾或為受損髮質。
 - 您最近 3 到 4 個月內剛做離子燙。
 - 您有一些剛長出來的短髮。
- 5 為達到最佳效果，梳理後可在頭髮上塗抹免沖洗護髮乳。

2 保固與服務

若您需要相關資訊 (如配件更換) 或有任何問題，請瀏覽飛利浦網站 www.philips.com/support，或聯絡您當地的飛利浦客戶服務中心 (您可以在全球保證書上找到聯絡電話)。若所在國家/地區沒有客戶服務中心，請洽詢當地的飛利浦經銷商。

刷毛保固期為 3 個月。如有需要，您可向飛利浦服務中心另行添購刷毛。



Always there to help you

Visit us at <https://www.philips.co.in/>
Contact at: 1860 180 1111, 1800 102 2929
Or customer care.india@philips.com

PHILIPS

Warranty card

Serial No.:

Dealer's Name: _____

Dealer's Stamp: _____

Customer's Name and Address: _____

Model No. _____

Bill No. _____ Amount: _____

Date of Purchase _____

Dealer Signature _____

Warranty and Service

For any information or problem, contact your local Philips dealer or authorized service center. For a list of authorized Philips service centers visit: www.philips.com or contact our consumer care at 1800 102 2929 (Toll free) or 1860 180 1111 (standard call rates apply)

All consumables and parts susceptible to normal wear and tear are not covered under warranty.

Warranty Card

This apparatus is covered under warranty against any defect due to defective material or workmanship for TWO YEARS from the date of purchase. Should a defect develop during the period of warranty, PHILIPS INDIA LTD. undertakes to repair the apparatus FREE OF CHARGE at any of the Philips authorized Service Centres.

The warranty is not valid in case:

1. Apparatus is not used according to user manual.
2. Defects caused by improper or reckless use.
3. Repairs done by persons other than Philips Authorized service centre.
4. Modifications of any nature made in the apparatus.
5. Tampered serial number.
6. Incomplete warranty card after purchase.
7. Product if used for commercial purpose (i.e. other than domestic use).
8. Usage of parts not recommended by Philips or those made by other manufacturers.

PHILIPS INDIA LIMITED,

3rd FLOOR, TOWER A, DLF IT PARK, 08 BLOCK AF,
MAJOR ARTERIAL ROAD, NEW TOWN (RAJARHAT),
KOLKATA-700156, WEST BENGAL