

**PHILIPS
NORELCO**

QP6620



BC



Manufactured for:
Philips Personal Health
A division of Philips North America LLC
P.O. Box 10313, Stamford, CT 06904

 This symbol on the product's nameplate means it is listed by Underwriters' Laboratories, Inc.

Norelco is a registered trademark of
Philips Electronics North America Corporation.

PHILIPS and Philips shield are registered trademarks of
Koninklijke Philips N.V.

©2019 Philips North America LLC
All rights reserved.
4222.002.9126.1 (05/2019)

ENGLISH

IMPORTANT SAFETY INSTRUCTIONS

When using an electric product,
basic precautions should always be
followed, including the following:

**Read all instructions before using this
product.**

DANGER

To reduce the risk of electric shock:

- Do not reach for a corded product or charging stand that has fallen into water. Unplug immediately.
- The power cord and the accessories connected to it are not for immersion or for use in shower.
- Do not use an extension cord with this product.
- Do not place or store the product or charging stand while plugged in where it can fall or be pulled into a tub or sink. Do not place or drop the product or charging stand water or other liquid while plugged in.
- Always unplug this product and charging stand from the electrical outlet immediately after (re)charging.
- Unplug and remove power supply cord from this product or charging stand before cleaning.
- The batteries used in this product may present a fire or chemical burn hazard if mistreated. Do not disassemble, heat above 100 °C (212 °F) or incinerate.

WARNING

**To reduce the risk of burns, fire,
electric shock, or injury to persons:**

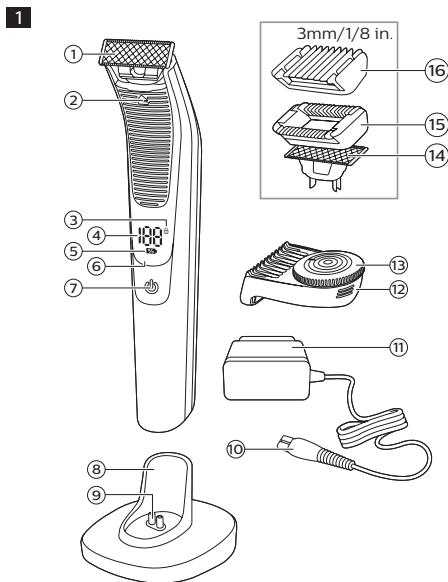
- Close supervision is required when this product and charging stand are used by, on, or near children, or persons with limited physical, sensory, or mental capabilities or invalids.
- Use this product and charging stand for its intended household use as described in this manual. Do not use attachments not recommended by Philips Electronics North America Corporation.
- Never operate this product or charging stand if it has a damaged power cord, if it is not working properly, after it has been dropped or damaged, or dropped into water while plugged in. For assistance call 1-800-243-3050.
- Keep the product, power cord, charging stand and any attachments away from heated surfaces.
- Never drop or insert any object into any opening.
- Do not use the adapter in or near a power outlet that contains an electric air freshener to prevent damage to the adapter.
- Do not charge, clean or plug in product outdoors or operate where aerosol (spray) products are being used or where oxygen is being administered.
- Always check blade and comb before using the product. Do not use the product if blade or comb are damaged, as injury may occur.
- Always attach power cord to product or charging stand first, then to power outlet. To disconnect, turn product off then remove power cord from outlet.
- Keep the power cord and charging stand dry at all times. Do not handle with wet hands.
- Never put the product or charging stand in direct sunlight or store at a temperature above 140 °F (60 °C).
- To prevent possible damage to the power cord, do not wrap power cord around the product.
- This product is for use on human hair only. Do not use the product for any other purpose.
- Always store the product, attachments and power cord in a moisture-free area. Make sure the cord is disconnected from the product.
- Do not attempt to open the product to remove or replace the built-in rechargeable battery.
- Only use the power cord and other accessories supplied with the product.

SAVE THESE INSTRUCTIONS

IMPORTANT: The power plug contains a transformer. Do not cut off the power plug to replace it with another plug as this will cause a hazardous condition.

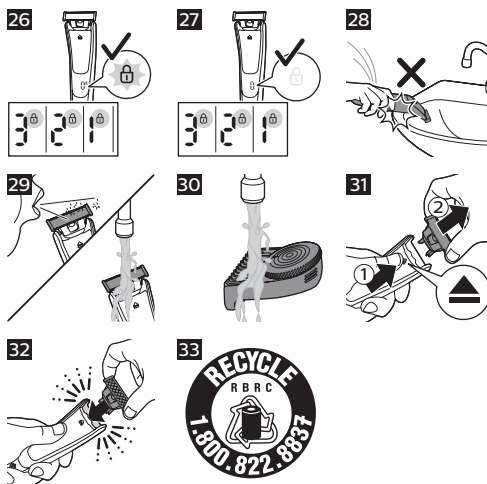
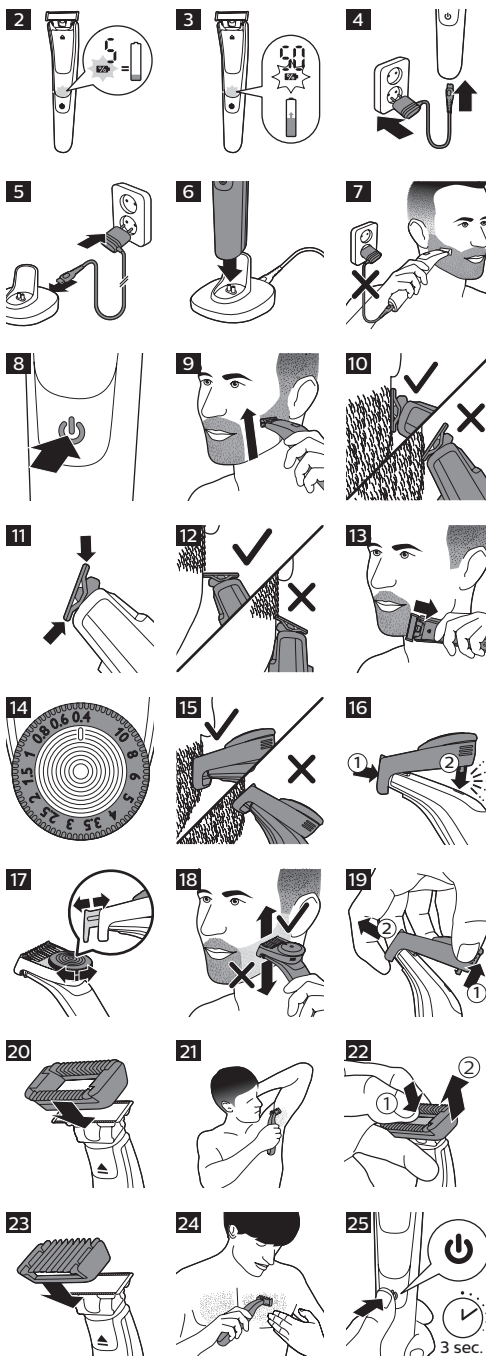
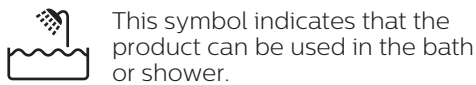
Introduction

Congratulations on your purchase and welcome to Philips Norelco!
To fully benefit from the support that Philips Norelco offers, register your product at www.philips.com/register.



General description (Fig. 1)

- 1 OneBlade (for face)
 - 2 Blade release slide switch
 - 3 Travel lock
 - 4 Battery status percentage
 - 5 Charge symbol
 - 6 LED Digital display
 - 7 On/off button
 - 8 Charging stand
 - 9 Small plug of the charging stand
 - 10 Small plug
 - 11 Power plug
 - 12 14-length Precision trimming comb
 - 13 Hair length setting wheel
 - 14 OneBlade (for body)
 - 15 Click-on skin guard
 - 16 Click-on body comb 3mm (1/8 in.)
- Not shown: pouch



Charging

Charging takes approx. 1 hour.

Charge the product before first use and when the display indicates that the battery is almost empty.

- Charging or using the product at temperatures below 40 °F (4,5 °C) or higher than 95 °F (35 °C) adversely affects the lifespan of the battery.
- If the product is subjected to a major change in temperature, pressure or humidity, let the product acclimatize for 30 minutes before use.

Battery status indications

- When the product charge is almost empty, the charge symbol flashes orange (Fig. 2).
- The remaining battery capacity is indicated by the battery status percentage on the display.
- When the product is charging, the charging symbol flashes white (Fig. 3).
- Quick charge: after approx. 5 minutes charging, the product contains enough energy for 5 minutes use. During quick charge the charge symbol quickly blinks white until quick charge is finished.
- When the battery is fully charged, the battery status percentage shows 100 % and the charge symbol lights up continuously.

Note: Approx. 30 minutes after the battery is fully charged or when you disconnect the product from the outlet, the battery status indicator switches off automatically.

Charging with the power cord

- 1 Make sure the product is switched off.
- 2 Insert the small plug into the product and put the power plug in any 120 V AC outlet (Fig. 4).
- 3 After charging, remove the power plug from the wall outlet and pull the small plug out of the product.

Charging in the charging stand

- 1 Insert the small plug into the charging stand and put the power plug in any 120V AC outlet (Fig. 5).
- 2 Put the product in the charging stand (Fig. 6).
- 3 After charging, remove the power plug from the wall outlet and pull the small plug out of the charging stand.

Operating time

When the product is fully charged, it has a cordless operating time of up to 90 minutes.

Note: An adapter plug may be necessary for cord usage in some foreign countries. Use an attachment plug adapter of the proper configuration for power outlet.

Using the product

This product comes with 4 blades. Use two blades for your face only and the other blades for your body.

14-length precision comb is for use on facial hair. It is not intended for shaving, edging or trimming hairs on lower body parts or scalp hair. Body comb is for use on body parts below the neck.

The blade with the skin guard attached is for use on sensitive body areas.

Note: This product is for cordless use only (Fig. 7).

- Use this product for its intended household use as described in this manual.
- For hygienic reasons, the product should only be used by one person.
- Trimming is easier when the skin and hair are dry.
- Use the product with the face blade to trim, edge or shave facial hair (beard, mustache and sideburns). Shave for a smooth result, trim with the precision comb to obtain a certain length and edge to create perfect edges and sharp lines.

- Use the product with the body blade to trim and/or shave your body hair. Shave your chest by only using the blade. Shave your sensitive areas (e.g. groin, armpits) with the skin guard attached. Use the body comb to trim your body hair.
- Take your time when you first start to use the product. You have to acquire practice with the product.

Switching the product on and off

- 1 Press the on/off button once to switch the product on or off (Fig. 8).

Shaving

- Make sure that the blade is in full contact with the skin by placing it flat on the skin.
- For the best result, move the product against the grain.
- Make long strokes while pressing lightly.
- Use the product dry or wet with gel or foam, even in the shower.
- Shaving a clean beard and face gives the best results.

- 1 Switch the product on (Fig. 8).
- 2 Place the blade on the skin and move the product up or against the grain in long strokes while pressing lightly (Fig. 9).

Note: Make sure you hold the surface of the blade flat against your skin (Fig. 10).

- 3 Switch off and clean the product after every use (see ‘Cleaning’).

Edging

- Use both edges of the blade to create sharp lines and perfect edges.
- Hold the product in such a way that the blade is perpendicular to the skin and one of its edges touches the skin. This allows more precise detailing of sideburns and the area around the mouth and nose.

- 1 To create sharp edges and lines, you can use either edge of the blade (Fig. 11).
- 2 Switch the product on (Fig. 8).
- 3 Place the edge of the blade perpendicular onto the skin (Fig. 12).
- 4 Make straight strokes while applying gentle pressure (Fig. 13).
- 5 Switch off and clean the product after each use (see ‘Cleaning’).

Trimming with comb

- The precision trimming comb allows you to trim hair to different lengths. When you trim for the first time, start at the highest length setting to familiarize yourself with the product.
- Always trim in the direction of the teeth of the precision trimming comb making sure the flat part of the comb is in full contact with the skin for an even trimming result (Fig. 15).
- Since all hairs do not grow in the same direction, you may want to try different trimming positions (i.e. upwards, downwards, or across). Practice is best for optimum results.
- Make sure to always move the product against the grain.
- Trimming is easier when the skin and hair are dry.

- 1 Place the front part of the comb onto the blade and push the projection at the back of the comb into the product (‘click’) (Fig. 16).
- 2 Turn the hair length setting wheel to select the desired hair length setting (Fig. 17). The settings on the wheel correspond to the remaining hair length after trimming. You can select a length from 1/32 in./0.4 mm to 13/32 in./10 mm (Fig. 14).
- 3 Switch the product on (Fig. 8).
- 4 Place the comb onto the skin and move the product upwards slowly, against the grain (Fig. 18).
- 5 Switch off and clean the product after each use (see ‘Cleaning’).
- 6 To remove the comb, pull the back part off the product and then slide the comb off the blade (Fig. 19).

Body

- For hygienic reasons, only use the body blade for trimming and shaving your body.
- For body trimming and shaving, make sure hair is clean and dry as wet hair tends to stick to the body.
- When shaving sensitive areas, always use the skin guard.
- Since all hairs do not grow in the same direction, you may want to try different trimming positions (i.e. upwards, downwards, or across). Practice is best for optimum results.
- For the best result, move the product against the grain.
- Make long strokes while pressing lightly.
- You can also use the product dry or wet with gel or foam, even in the shower.
- Shaving a clean body gives the best results.

Shaving with skin guard

For optimal performance, use the skin guard only on sensitive areas (for example the groin and armpits).

- 1 Hold the skin guard on both sides and press onto the blade (Fig. 20).
- 2 Switch the product on (Fig. 8).
- 3 Place the skin guard onto the skin and stretch the skin with your free hand. Move the product upwards slowly, against the grain (Fig. 21).
 - When using the product on your armpits, raise your arm and put your hand on the back of your head to stretch the skin.
 - Regularly remove cut hair from the guard. If a lot of hair has accumulated in the guard, remove it from the product and blow and/or shake out the hairs.
- 4 Switch off and clean the product after each use.
- 5 To remove the skin guard, put one finger under the edge of the guard and press on the blade with your thumb (Fig. 22).

Shaving without skin guard

The body blade without the skin guard allows you to shave hair on your body below the neckline (for example the chest).

- 1 To remove the skin guard, put one finger under the edge of the guard and press with your thumb on the blade (Fig. 22).
- 2 Switch the product on (Fig. 8).
- 3 When you use the product on your chest, place the blade on the skin and move the product against the grain in long strokes while pressing lightly. Stretch the skin with your free hand (fig. 24).

Note: Make sure you hold the surface of the blade flat against your skin (Fig. 10).

- 4 Switch off and clean the product after every use (see ‘Cleaning’).

Trimming with body comb

The 3 mm (1.8 in.) body comb allows you to trim hair on your body below the neckline (for example chest, armpits, groin).

- 1 Hold the body comb on both sides and press onto the blade (Fig. 23).
- 2 Switch the product on.
- 3 Place the comb onto the skin and stretch the skin with your free hand. Move the product upwards slowly, against the grain (Fig. 24).
 - Make sure that the flat part of the comb is always in full contact with the skin to obtain an even trimming result (Fig. 15).
 - When you use the product on your armpits, raise your arm and put your hand on the back of your head to stretch the skin.
 - Regularly remove cut hair from the guard. If a lot of hair has accumulated in the guard, remove it from the product and blow and/or shake out the hairs.
- 4 Switch off and clean the product after each use (see ‘Cleaning’).
- 5 To remove the comb, hold it on both sides and pull it off the blade (Fig. 22).

Travel lock

The product is equipped with a travel lock function. You can use the travel lock if you are going to store the product for a longer time period or if traveling. The travel lock prevents the product from being switched on by accident.

Activating the travel lock

- 1 Press the on/off button for 3 seconds (Fig. 25).
- The travel lock symbol lights up and the digital display counts down (Fig. 26).
 - When the travel lock is activated, the travel lock symbol flashes.

Deactivating the travel lock

- 1 Press the on/off button for 3 seconds (Fig. 25).
- The display counts down. Then the travel lock symbol lights up and switches off (Fig. 27).
 - The product is now ready for use.

Note: The product unlocks automatically when connected to an electrical outlet.

Cleaning

Clean the product after every use.

Never use scouring pads, abrasive cleaning agents or aggressive liquids such as gasoline or acetone to clean the product.

Do not tap the product or blade against a surface to remove hairs and water as this may cause damage to the product and blade (Fig. 28). If the blade is damaged, replace immediately.

Never dry the blade with a towel or tissue, as this may cause damage.

Cleaning the product

- 1 Switch off the product.
- 2 Remove the comb from the blade (Fig. 19).
- 3 Blow off any hairs that have accumulated on the blade and/or comb.
- 4 Switch on the product approx. 15 seconds while rinsing the blade with lukewarm water.
- 5 Rinse the comb for approx. 15 seconds with lukewarm water.
- 6 Carefully shake off excess water and let all parts air dry completely.

Note: The blade is fragile. Handle it carefully. Replace the blade immediately if it is damaged.

This product has no other user-serviceable parts. For assistance call 1-800-243-3050.

Storage

- Always attach the precision trimming comb on the blade to protect the blade from damage during traveling or storage (Fig. 16).
- Store the product in the pouch supplied. Make sure the product and attachments are completely dry before storing in the pouch.
- Be sure the product is switched off. Remove cord from outlet and the product before storing it in a safe, dry location where it will not be crushed, banged, or subject to damage.
- Do not wrap cord around the product when storing.
- Store cord in a safe location where it will not be cut or damaged.
- Do not place or store the product where it can fall or be pulled into a tub or sink, water or other liquid while plugged in.

Replacement

Replacing the blade

For optimal cutting and gliding performance, replace the blade every 4 months or when it no longer provides the shaving or trimming results you expect. This advice is based on two full shaves a week and actual results may vary. The blade is equipped with a blade wear indicator. A green bar will gradually appear on the blade as you use it. When it is highly visible, it is recommended to replace your blade for the best OneBlade experience. Always replace the blade with original Philips Norelco blade (see ‘Accessories’). Depending on your usage behavior, the exact lifetime of the blade could be longer or shorter. Similar to a manual blade, the blade becomes blunt over time, which results in increased hair pulling and reduced cutting performance.

Replacing the blade

- 1 Switch the product off.
- 2 Carefully push the blade release slide switch upwards while holding the blade on both sides (Fig. 31). This will prevent the blade from flying away.
- 3 Hold the new blade on both sides and press it onto the handle (‘click’) (Fig. 32).

Note: Be careful, the edges of the blade are sharp. When you hear a click, the new blade is placed correctly and ready for use.

Accessories

Replacement parts and accessories may be purchased at a store near you or on our website **www.philips.com/store**. The following accessories are available:

- Model QP210 Philips Norelco Replacement Blade, 1-Pack
- Model QP220 Philips Norelco Replacement Blade, 2-Pack
- Model QP230 Philips Norelco Replacement Blade, 3-Pack

Assistance

For assistance, visit our website: **www.philips.com/support** or call toll free 1-800-243-3050. Online information is available 24 hours a day, 7 days a week.

Disposal

- This product contains a rechargeable lithium-ion battery which must be disposed of properly (Fig. 33).
- Contact your local town or city officials for battery disposal information. You can also call 1-800-822-8837 or visit **www.call2recycle.org** for battery drop-off locations.
- For assistance, visit our website **www.philips.com/support** or call 1-800-243-3050 toll free.
- Your product is designed and manufactured with high quality materials and components, which can be recycled and reused. For recycling information, please contact your local waste management facilities or visit **www.recycle.philips.com**

Full Two-Year Warranty

Philips North America LLC warrants this new product (except blade and 14-length precision comb) against defects in materials or workmanship for a period of two years from the date of purchase, and agrees to repair or replace any defective product without charge.

IMPORTANT: This warranty does not cover damage resulting from accident, misuse or abuse, lack of reasonable care, the affixing of any attachment not provided with the product or loss of parts or subjecting the product to any but the specified voltage or batteries.*

NO RESPONSIBILITY IS ASSUMED FOR ANY SPECIAL, INCIDENTAL OR CONSEQUENTIAL DAMAGES.

In order to obtain warranty service, simply go to **www.philips.com/support** for assistance. It is suggested that for your protection you return shipments of product by insured mail, insurance prepaid. Damage occurring during shipment is not covered by this warranty. NOTE: No other warranty, written or oral, is authorized by Philips North America LLC. This warranty gives you specific legal rights, and you may also have other rights which vary from state to state. Some states do not allow the exclusion or limitation of incidental or consequential damages, so the above exclusion and limitations may not apply to you.

*Read enclosed instructions carefully.

45-DAY MONEY-BACK GUARANTEE

If you are not fully satisfied with your product send the product back and we'll refund you the full purchase price.

The product must be shipped prepaid by insured mail, insurance prepaid, have the original sales receipt, indicating purchase price and date of purchase, and the money-back guarantee return authorization form enclosed.

We cannot be responsible for lost mail.

The product must be postmarked no later than 45 days after the date of purchase. Philips reserves the right to verify the purchase price of the product and limit refunds not to exceed suggested retail price.

To obtain the money-back guarantee service, please go to www.PhilipsMoneyBack.com, and follow the simple 3 step process. Delivery of refund check will occur 6–8 weeks after receipt of returned product.