

Register your product and get support at
www.philips.com/welcome

HP8630
HP8631



User manual

PHILIPS



English

Congratulations on your purchase, and welcome to Philips! To fully benefit from the support that Philips offers, register your product at www.philips.com/welcome.

1 Important

Read this user manual carefully before you use the appliance and keep it for future reference.

- **WARNING:** Do not use this appliance near water.
- When the appliance is used in a bathroom, unplug it after use since the proximity of water presents a risk, even when the appliance is switched off.
- **WARNING:** Do not use this appliance near bathtubs, showers, basins or other vessels containing water.
- Always unplug the appliance after use.
- If the mains cord is damaged, you must have it replaced by Philips, a service centre authorised by Philips or similarly



qualified persons in order to avoid a hazard.

- This appliance can be used by children aged from 8 years and above and persons with reduced physical, sensory or mental capabilities or lack of experience and knowledge if they have been given supervision or instruction concerning use of the appliance in a safe way and understand the hazards involved. Children shall not play with the appliance. Cleaning and user maintenance shall not be made by children without supervision.
- For additional protection, we advise you to install a residual current device (RCD) in the electrical circuit that supplies the bathroom. This RCD must have a rated residual operating current not higher than 30mA. Ask your installer for advice.

- Do not insert metal objects into openings to avoid electric shock.
- Before you connect the appliance, ensure that the voltage indicated on the appliance corresponds to the local power voltage.
- Do not use the appliance for any other purpose than described in this manual.
- Do not use the appliance on artificial hair.
- When the appliance is connected to the power, never leave it unattended.
- Never use any accessories or parts from other manufacturers or that Philips does not specifically recommend. If you use such accessories or parts, your guarantee becomes invalid.
- Do not wind the mains cord round the appliance.
- Wait until the appliance has cooled down before you store it.

- Pay full attention when using the appliance since it could be extremely hot. Only hold the handle as other parts are hot and avoid contact with the skin.
- Always place the appliance on a heat-resistant, stable flat surface.
- Avoid the mains cord from coming into contact with the hot parts of the appliance.
- Keep the appliance away from flammable objects and material when it is switched on.
- Never cover the appliance with anything (e.g. a towel or clothing) when it is hot.
- Only use the appliance on dry hair. Do not operate the appliance with wet hands.
- Keep the barrel clean and free of dust and styling products such as mousse, spray and gel.

- The barrel has a layer of coating. This coating might slowly wear away over time. However, this does not affect the performance of the appliance.
- Always return the appliance to a service centre authorized by Philips for examination or repair. Repair by unqualified people could result in an extremely hazardous situation for the user.

Electromagnetic fields (EMF)

This Philips appliance complies with all applicable standards and regulations regarding exposure to electromagnetic fields.

Environment

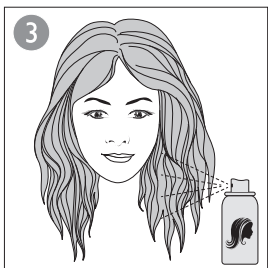
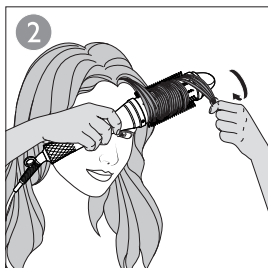
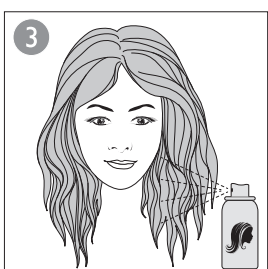
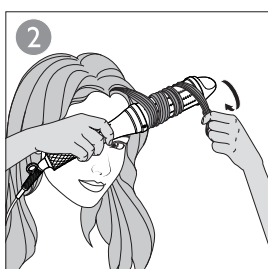
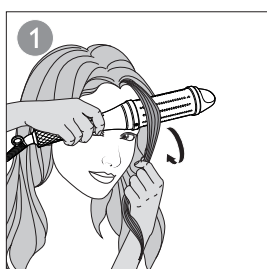
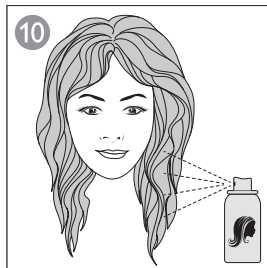
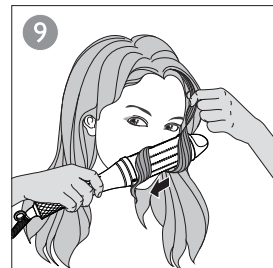
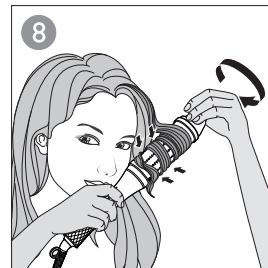
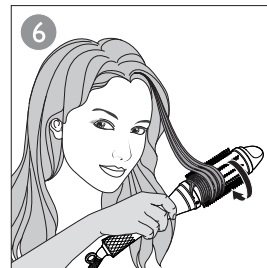
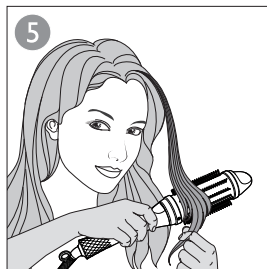
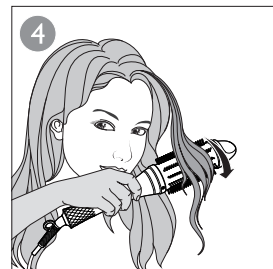
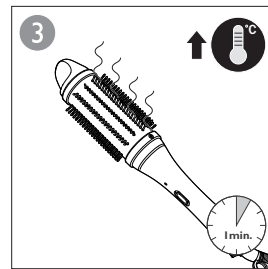
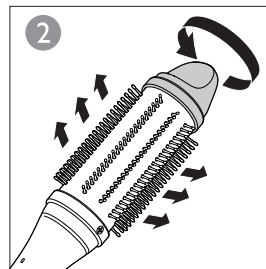
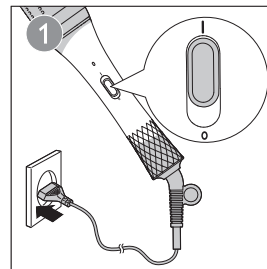
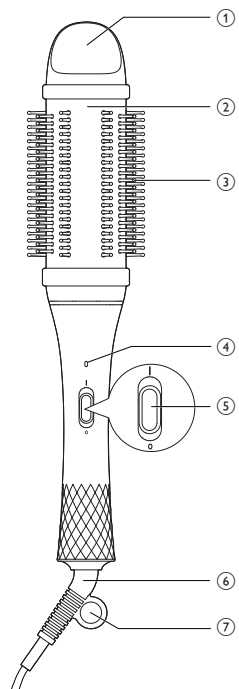
Do not throw away the appliance with the normal household waste at the end of its life, but hand it in at an official collection point for recycling. By doing this, you help to preserve the environment.



Specifications are subject to change without notice
© 2013 Koninklijke Philips N.V.
All rights reserved.

3140 035 35681





2 Introduction

Philips 38mm styling brushes allows you to quickly and easily create soft curls and waves while caring for your hair. Heated 38mm barrel secures long lasting results, and retractable bristles guarantee safe application and perfect styling results. Hope you will enjoy using your **Essential Care Styler**.

3 Overview

- 1 Bristle Retraction Knob
- 2 Ceramic Coated Brush Barrel
- 3 Bristles
- 4 Power-on Indicator
- 5 On/off Switch
- 6 360° Swivel Cord
- 7 Hanging Loop

4 Style your hair

Preparation for your hair:

- Apply heat protection spray on wet hair before drying it.
- Make sure your hair is completely dry before styling.
- If you have curly or frizzy hair, comb them through before starting using the heated styling brush.
- Apply mild hair fixation spray before styling with heated styling brush.

1 Connect the plug to a power supply socket. Slide the on/off switch (5) to I to switch on the appliance.

↳ The power-on indicator (4) lights up.

2 Place the appliance on a heat-resistant surface. After 60 seconds, the appliance is ready for use.

3 Turn the bristle retraction knob (1) to fully extract the bristles (3).

4 Take a hair strand between 2cm and 4cm. Brush down the length of the hair till you almost reach the hair ends.

Tip: For more defined curls and waves, take smaller sections of hair.

5 Rotate the handle such that the hair ends are wound around the barrel (2). Make sure that hair is evenly spread on the barrel.

Tip: If the hair slips off the barrel, use your fingers to place the loose hair in-between the bristles.

6 Rotate the handle for the hair strand to be completely on the barrel (2).

7 Keep the brush in the position for 8 to 12 seconds.

Note: To prevent hair from tangles, rotate the styling brush in a single direction when curling your hair.

8 Turn the knob (1) to retract the bristles.

9 Remove the brush horizontally to release the hair. Do not unwind the strand.

Tip: After taking the brush out of your hair, hold the curls in your hand for few seconds in order for the curls to cool down to give longer lasting results.

Repeat steps 2-9 to style the rest of your hair.

10 Always apply hair fixation spray after styling.

5 Additional styling tips

If you want to add more volume to your hair, wrap your hair from the roots to the tips, ensuring that hair is spread evenly across the barrel. When wrapping your hair from the roots, you can either extract the bristles to secure your hair in position, or retract the bristles for faster styling. To avoid unintentional burns, remember to practice using with the bristles fully extracted.

After use:

1 Switch off the appliance and unplug it.

2 Place it on a heat-resistant surface until it cools down.

3 Remove hairs and dust from the appliance.

4 Clean the appliance with a damp cloth.

5 Keep the appliance in a safe and dry place, free of dust.

6 You can also hang it with the hanging loop (7).

6 Guarantee and service

If you need more information or if you have any problems, please visit the Philips website at www.philips.com or contact the Philips Customer Care Centre in your country (you can find its phone number in the worldwide guarantee leaflet). If there is no Consumer Care Centre in your country, go to your local Philips dealer.

7 Troubleshooting

Problem	Cause	Solution
The appliance does not work at all.	The power socket to which the appliance has been connected may be broken.	Check the appliance is plugged in correctly. Check the fuse for this power socket in your home.
	The appliance may not be suitable for the voltage to which it has been connected.	Ensure that the voltage indicated on the type plate of the appliance corresponds to the local mains voltage.

