

PHILIPS

NORELCO

***ALL IN 1
GROOMING
SYSTEM***



G370

**Rechargeable
Cordless**

Register your product and get support at
www.philips.com/norelco

IMPORTANT SAFETY INSTRUCTIONS

When using an electrical appliance, basic safety precautions should always be followed, including the following:

Read all instructions before using this appliance.

DANGER

To reduce the risk of electric shock:

1. Do not reach for a groomer/charging stand that has fallen into water. Unplug immediately.
2. Do not use while bathing or in a shower.
3. Do not place or store groomer/charging stand where it can fall or be pulled into a tub or sink. Do not place in or drop into water or other liquid.
4. Always unplug this groomer/charging stand from the electrical outlet immediately after using, except when groomer is (re)charging.
5. Unplug groomer/charging stand before cleaning.
6. When **discarding** groomer, unplug groomer to remove rechargeable battery. See Battery Removal Instructions.

WARNING

To reduce the risk of burns, fire, electric shock or injury to persons:

1. Close supervision is necessary when this appliance is used by, on, or near children or invalids.
2. Use this groomer/charging stand for its intended household use as described in this manual. Do not use attachments not recommended by Philips Electronics North America Corporation.
3. Never operate this groomer if it has a damaged cord or plug, if it is not working properly, if it has been dropped, damaged, or dropped into water. For assistance call 1-800-243-3050.
4. Keep the groomer/charging stand, cord and any attachments away from heated surfaces.
5. Never drop or insert any object into any opening.
6. Do not operate, charge or plug in groomer/charging stand outdoors or where aerosol (spray) products are being used or where oxygen is being administered.
7. Always check foil, cutters, cutting unit and trimmers before using the groomer. Do not use the groomer if foil, cutters, cutting unit or trimmers are damaged, as injury may occur.
8. Always attach plug to groomer/charging stand first, then to outlet. To disconnect, turn on/off switch to "OFF" position, then remove plug from outlet.
9. To prevent possible damage to the cord, do not wrap cord around the groomer/charging stand.
10. Never put groomer/charging stand in direct sunlight or store at a temperature above 140°F.
11. This groomer is for use on human hair only. Do not use this groomer for any other purpose.
12. Always store your groomer, charging stand, attachments and power plug in a moisture-free area. Make sure the cord is disconnected from the groomer/charging stand.

SAVE THESE INSTRUCTIONS

IMPORTANT: YOUR GROOMER CONTAINS A NICKEL-CADMIUM RECHARGEABLE BATTERY.

See Battery Removal Instructions.

IMPORTANT: The power plug contains a transformer. Do not cut off the power plug to replace it with another plug as this will cause a hazardous condition.

Registration

Congratulations on your purchase and welcome to Philips Norelco!

To fully benefit from the support that Philips Norelco offers, register your product at www.philips.com/norelco

Put It To The Test

Like many new products, your Philips Norelco All in 1 Grooming System may take a little getting used to. If you are using an electric Groomer for the first time, or if you've been using a different brand, take the time to acquaint yourself with your new Grooming System.

Your All in 1 Grooming System features the unique AccuControl System combined with adjustable Length Settings to make trimming facial hairs or hair clipping goof proof.

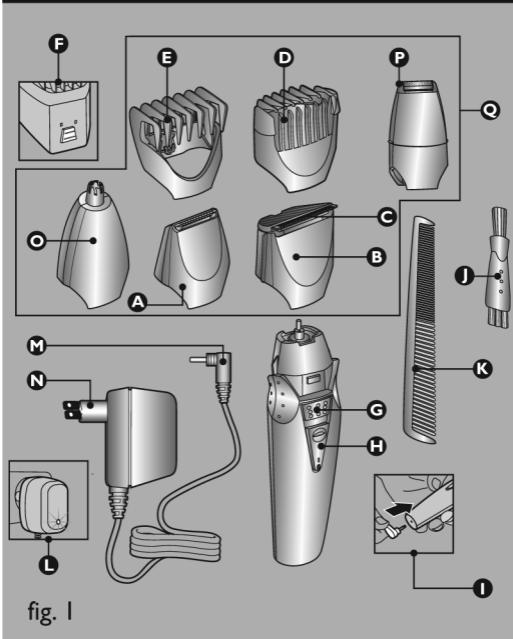
Throw your scissors away and put your new All in 1 Grooming System to the test. We guarantee precise, professional results or Philips Norelco will refund you the full purchase price as long as the request is received within 45 days of purchase.

Registration

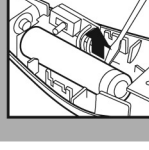
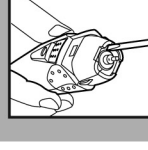
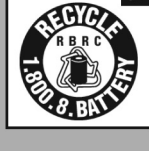
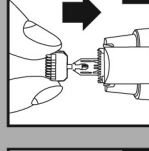
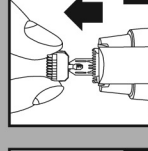
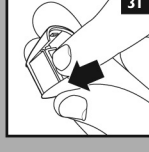
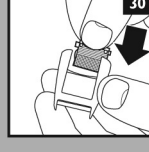
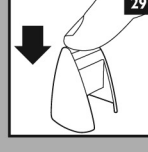
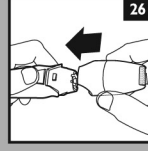
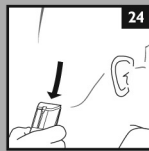
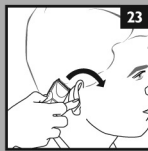
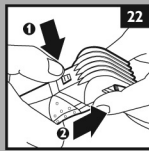
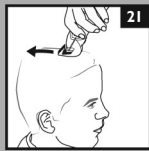
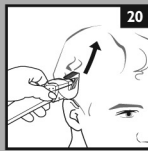
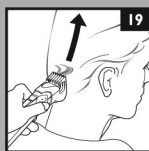
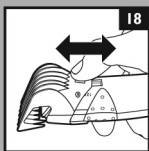
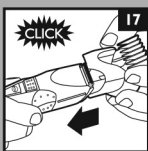
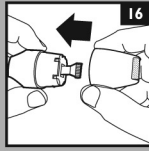
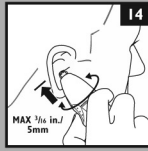
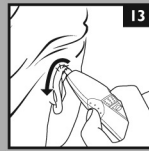
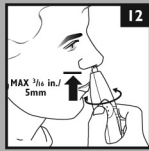
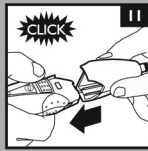
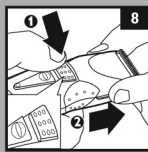
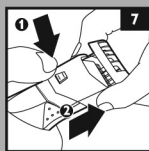
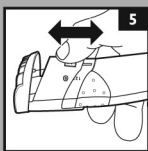
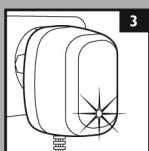
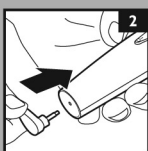
Congratulations on your purchase and welcome to Philips Norelco!

To fully benefit from the support that Philips Norelco offers, register your product at www.philips.com/norelco

Features



- A Precision Trimmer Attachment
 - B Full Width Trimmer Attachment
 - C Lifetime Self-Sharpening 3-Dimensional Rounded Stainless Steel Cutter Blades
 - D AccuControl Beard & Moustache Trimmer Guide Comb
 - E Hair Clipping Comb
 - F 9 Position Hair Length Selector
 - G Release Button
 - H On/Off Slide Switch
 - I Socket for appliance plug
 - J Cleaning Brush
 - K Styling Comb
 - L LED Charging Indicator Light on Adaptor
 - M Appliance Plug
 - N Charging Plug
 - O Nose, Ear, Eyebrow Trimmer Attachment
 - P Mini Shaver
 - Q Rinsable Attachments
- Full Two-Year Warranty
45-Day Money-Back Guarantee



To Charge/Recharge

- ▶ Fully charge Groomer before using for the first time or after non-use for a long period of time.
- ▶ Battery performance is best if you recharge only when the battery is (almost) completely empty.
- ▶ Charging or recharging at temperatures below 40°F or higher than 95°F adversely affects lifespan of the battery.
- ▶ Continuously recharging Groomer will reduce lifespan of battery.

1 Be certain Groomer is OFF.

2 Insert the appliance plug directly into the Groomer (fig. 2) and plug charging plug into any 120VAC outlet. Use only the cord provided.

3 After a few moments, the Charging Indicator Light on the power plug will light to indicate the Groomer is charging (fig. 3).

- ▶ It will take approximately 10 hours to fully charge the Groomer for a cordless trimming time of up to 35 minutes.
- ▶ Disconnect the cord and unplug from electrical outlet.

Optimize the working life of the battery

- ▶ After the Groomer has been charged for the first time, do not recharge the Groomer between trimming sessions. Continue using it until the battery is completely empty.
- ▶ Do not charge for more than 24 hours.
- ▶ Do not keep cord permanently plugged in.
- ▶ Discharge/run down the battery completely twice a year by letting the motor run until it stops.
- ▶ If the Groomer hasn't been used for a long period of time, it must be recharged for a full 10 hours.

Cordless Trimming

- 1** Charge according to directions. Unplug Groomer from outlet.
- 2** Slide ON/OFF switch ON to begin trimming.
- 3** If the battery is empty and you want to trim your beard, charge the Groomer for at least 3 hours and you will have enough power for one use (10 minutes).

AccuControl System

The unique Philips Norelco AccuControl System puts you in complete control while trimming your facial hairs with no prior experience needed. The flexing Guide Comb adjusts automatically to hug the contours of your face for a trim that is both even and accurate. And, it's easy to maneuver over those hard-to-reach areas such as the throat and chin. The Hair Length Selector allows you to choose among 9 preset hair lengths and clicks into position so you can control the exact hair length you desire or vary the length of your facial hair. The Hair Clipping Comb also features 9 preset hair lengths and clicks into position so you can control the exact hair length you desire. The Philips Norelco All in 1 Grooming System for professional, goof-proof results every time.

Trimming

- ▶ Make sure hair is clean and dry.
- ▶ Always comb the hair with the styling comb in the direction of growth before you start trimming.

Do not move the Groomer too fast. Make smooth and gentle movements.

Trimming your Beard & Moustache with AccuControl Guide Comb Attachment

- ▶ Use this Groomer for its intended household use as described in this manual.
- ▶ Make sure that the Groomer is fully charged before you start trimming. This Groomer will not operate while cord is connected to electrical outlet.

1 Put the AccuControl comb on the full width trimmer attachment until you hear it click into place (fig. 4). The AccuControl comb will not work with the smaller neckline and sideburn trimmer, or mini shaver attachments.

2 Press the Hair Length Selector and slide it to the desired trimming length setting. The selected setting number will appear in the window to the left of the Hair Length Selector (fig.5). See Table I for settings.

- ▶ If you are trimming for the first time, start by using the AccuControl comb at the maximum trimming length setting (#9) to prevent accidentally trimming hairs too short. As you become familiar with the settings, adjust Hair Length Selector to desired trimming length. Selector will “click” into position at each setting.

3 Switch the Groomer ON.

4 To trim in the most effective way, move the Groomer against the direction of hair growth. Make sure the surface of the Guide Comb always stays in contact with the skin (fig. 6).

NOTE: Since all hairs do not grow in the same direction, you may want to try different trimming directions (i.e., upwards, downwards, or across). Practice is best for optimum results.

- ▶ If a lot of hair has accumulated in the Guide Comb, remove the comb and blow and/or shake the hair out of the comb. You can also use the cleaning brush provided to remove hair from the comb area.
- ▶ **REMEMBER:** You must reset the hair length selector back to your desired setting every time you replace the guide comb on the appliance.

Table 1. Beard Trimmer

Setting	Remaining hair length (in.)/(mm)
1 Stubble	5/64 in/2mm
2 Closely Cropped	5/32 in/4mm
3 Short	1/4 in/6mm
4 Medium Short	5/16 in/8mm
5 Medium	13/32 in/10mm
6 Medium Long	15/32 in/12mm
7 Long	9/16 in/14mm
8 Extra Long	5/8 in/16mm
9 Longest	23/32 in/18mm

- ▶ The remaining hair length corresponds with the smallest distance between the cutting blade and the spot where the comb is in contact with the skin.
- ▶ Cutting without the comb attachment or setting the AccuControl guide comb to #1 position will result in a stubble beard look.

Beard Trimming Without AccuControl Comb

Remove comb if you are:

- ▶ Defining hair lines
- ▶ Trimming nape of neck
- ▶ Removing single, unwanted hairs

1 Be certain the Groomer is in the OFF position.

2 Remove the AccuControl comb attachment by pressing and sliding the Hair Length Selector upwards (fig. 7).

Never pull off the AccuControl comb attachment by grasping the flexible top portion. Always pull off by the bottom part of attachment.

3 Switch the Groomer ON.

4 Make well-controlled movements. Touch the hair/skin lightly with the Groomer.

Defining Beard, Moustache and Sideburns

1 Be certain the Groomer is in the OFF position.

2 Remove the AccuControl comb attachment by pressing and sliding the Hair Length Selector upwards (fig. 7).

3 Detach the full width trimmer attachment by pushing the release button (fig. 8).

4 Put the precision trimmer attachment on the Groomer (fig. 9). You will hear a click.

▶ Hold the Groomer upright when you use the precision trimmer attachment (fig. 10).

Using Nose, Ear & Eyebrow Trimmer Attachment

- 1** Be certain the Groomer is in the OFF position.
- 2** To attach or remove nose, ear, eyebrow trimmer (or change attachments):
 - ▶ Remove the AccuControl comb attachment (fig. 7).
 - ▶ Remove the full width trimmer attachment by pushing the release button (fig. 8).
 - ▶ Put the nose, ear, eyebrow attachment on the Groomer (fig. 11). You will hear a click.

Trimming Nose Hair

- ▶ Make sure nasal passages are clean.
- 1** Place nose, ear and eyebrow attachment on Groomer.
 - 2** Switch the Groomer on and insert the tip of the attachment into one nostril (fig. 12).

CAUTION: Do Not insert the tip more than 3/16 in./5mm into your nostril.

- 3** Slowly move the tip in and out while turning it around at the same time in order to remove unwanted hair. For best results, make sure the side of the tip is firm against skin. This will reduce the tickling effect that can occur during trimming of nose hair.
- 4** Turn off Groomer. Rinse attachment clean after each use.

Trimming Ear Hair

- ▶ Clean outer area of ear and ear canal. Make sure it is free of wax.
 - ▶ Nose, ear and eyebrow attachment should be on the Groomer.
- 1** Switch the Groomer on and move the tip softly around the edge of ear to remove hairs extending beyond the outer ear (fig. 13).
 - 2** Carefully insert the tip into outer ear canal.

CAUTION: Do not insert the tip further than 3/16 in./5mm into the ear as this could cause damage to the eardrum (fig. 14).

- 3** Turn off Groomer. Rinse attachment clean after each use.

Trimming Eyebrow

► Nose, ear and eyebrow attachment should be on Groomer.

1 Switch the Groomer on and use the tip to cut individual eyebrow hairs.

The Groomer can be used for clipping single long hairs.

2 Put the Groomer at the root of the hair and move it along the edge of the eyebrow from the base of the nose towards the outer tip of the eyebrow in the direction of hair growth (fig. 15).

IMPORTANT: Do not use the Groomer to define or trim the entire eyebrow. Do not try to trim your eyelashes. Be careful not to get too close to your eyelashes and eyes!

3 Turn off Groomer. Rinse attachment clean after each use.

Shaving With Mini Shaver Attachment

1 Put the mini shaver attachment on the Groomer (fig. 16).

2 Use the narrow mini shaver to shave along contoured edges to remove any stubble while creating a smooth, well-defined beard line.

Before using the mini shaver, always check it for wear and damage. If the mini shaver shows signs of wear or damage, do not use it as injury may occur. Do not use the mini shaver until it has been replaced.

Gently press the mini shaver onto the skin. Do not press too hard.

Hair Clipping

- ▶ Make sure that the appliance is fully charged before you start clipping hair. The appliance will not operate while cord is connected to electrical outlet.
- ▶ Before you start clipping, make sure that the head of the person whose hair you are cutting is at the same level as your chest so that all parts of his/her head are clearly visible and within easy reach.
- ▶ Only use the appliance on dry hair.
- ▶ Do not use on freshly washed hair.
- ▶ Before you begin, comb the hair in the direction of growth.
- ▶ To achieve optimal clipping results, always move the appliance slowly through the hair against the direction of hair growth.

Clipping with hair comb attachment

- 1** Put the hair clipper comb on the full width trimmer attachment and push until you hear it 'click' into place (fig. 17).
- 2** Press the Hair Length Selector and slide it to the desired setting. See Table 2.
- 3** The setting selected will appear in the window to the left of the Hair Length Selector (fig. 18).

When you are clipping for the first time, start at the maximum clipping length setting (#9) to familiarize yourself with the appliance and prevent accidentally trimming hairs too short. As you become familiar with the settings, adjust the Hair Length Selector to desired trimming length. Selector will 'click' into position at each setting.

Table 2. Hair Clipper

Setting	Remaining hair length (in)/(mm)
1	5/32 in./4mm
2	1/4 in./6mm
3	5/16 in./8mm
4	13/32 in./10mm
5	15/32 in./12mm
6	9/16 in./14mm
7	5/8 in./16mm
8	23/32 in./18mm
9	25/32 in./20mm

- 4** Make sure that the flat part of the comb is always in full contact with the scalp to obtain an even result (fig. 19-20).
 - 5** Move the appliance slowly over the crown from different directions to achieve an even result (fig. 21).
 - 6** Always move the appliance against the direction of hair growth.
 - 7** Make overlapping passes over the head to ensure that all hair that should be cut has been cut.
 - 8** Turn the Groomer off and remove the hair comb often to blow and/or shake out hair that has accumulated.
- ▶ **REMEMBER:** You must reset the hair length selector back to your desired setting every time you replace the hair clipping comb on the appliance.

Contouring without the hair clipping comb attachment

- 1** Remove the hair comb by pressing and sliding the Hair Length Selector upwards (fig. 22).

Be careful when you are clipping without comb attachment as when the appliance is turned on it will trim every hair it touches.

- 2** Tilt the appliance in such a way that only one edge of the trimming attachment touches the hair ends when you shape the contours around the ears (fig. 23).
- 3** To contour the nape of the neck or hairline, turn the appliance and hold it with the trimming attachment pointing downwards (fig. 24).
- 4** To contour the sideburns, turn the appliance and hold it with the trimming attachment pointing downwards (fig. 25).

Cleaning

- Do not use water or a moist cloth to clean the Groomer.
- Always switch Groomer OFF before cleaning.
- Do not use compressed air, abrasive cleaning agents, scourers or liquids such as alcohol, benzene, bleach or acetone to clean the Groomer and attachments.
- Never clean, replace or remove Groomer attachments with motor ON.
- Do not apply pressure to cutters.
- Do not touch cutters with hard objects as this may damage them.
- Do not use while bathing, showering or immerse the Groomer in water or other liquids as damage to Groomer may occur.

During Use:

- If cut hairs have accumulated in the Guide Comb area, remove hairs by shaking, blowing or using cleaning brush provided. Remember to adjust the trimming length back to your selected setting when you replace the comb on Groomer.

After Each Use:

- 1** Make sure the Groomer is switched OFF and disconnected from the electrical outlet.
- 2** Remove any attachment.
- 3** Also separate the top part of the mini shaver attachment from its body (fig. 26).
- 4** Blow and/or shake out any hair that may have accumulated in the attachment.
 - The shaving foil is very delicate and should not be handled.
 - If foil becomes damaged, replace it. Do not apply pressure to shaving foil.
 - Do not clean the foil with the brush, as this may cause damage.
- 5** Place the attachment back on the Groomer.

Replacing The Mini Shaver Cutter

If the mini shaver cutter is worn or damaged, do not continue using the appliance. Replace the mini foil cutter and the shaving foil immediately.

A worn or damaged mini shaver cutter should only be replaced with an original Philips cutter. Visit www.philips.com/support or call 1-800-243-3050 for assistance.

- 1** Remove the detachable shaving head by pulling it from the appliance (fig. 26).
- 2** Remove the old mini shaver cutter by pulling it from the appliance (fig. 32).
- 3** Make sure that the spring within the driving unit does not get lost.
- 4** Insert the new mini shaver cutter carefully into the driving unit (fig. 33).
- 5** When the mini shaver cutter is properly positioned, push it into its end position with your finger.
- 6** Replace the detachable shaving head on the appliance or place it in the storage stand.

Assistance

For assistance:

Visit our website:

www.philips.com/support or call toll free 1-800-243-3050

Information is available 24 hours a day, 7 days a week.

Battery Removal

- ▶ This Philips Norelco Groomer contains a rechargeable Nickel Metal Hydride battery, which must be disposed of properly (fig. 34).
 - ▶ Battery should only be removed when Groomer is to be discarded.
 - ▶ For assistance, visit our website: www.philips.com/support or call 1-800-243-3050.
- 1** Unplug electrical cord from outlet and Groomer before dismantling Groomer.
 - 2** Allow the Groomer to run until the batteries are completely empty/depleted. Turn Groomer off.
 - 3** Insert a narrow, flat blade screwdriver in the groove next to the shaft at the top of the Groomer (fig. 35).
 - 4** Turn the screwdriver to separate the two housing halves.
 - 5** Lift the battery out of the housing using the screwdriver (fig. 36).
 - 6** Twist and bend the battery connections until they break.
 - 7** Remove the battery from the Groomer.
 - 8** Do not attempt to replace battery. Insulate battery ends by covering with tape and/or place battery in a small plastic bag. Discard Groomer.
 - 9** Contact your local town or city officials for battery disposal information or call 1-800-8-BATTERY or www.rbrbc.com for drop-off locations.

PHILIPS**NORELCO****45-DAY
MONEY-BACK
GUARANTEE**

If you are not fully satisfied with your Philips Norelco Groomer, send the product back along with dated sales receipt and we'll refund you the full purchase price.

The Groomer must be shipped prepaid by insured mail, insurance prepaid, and have the original sales receipt, indicating purchase price and the date of purchase, enclosed. We cannot be responsible for lost mail. The Groomer must be postmarked no later than 45 days after the date of purchase. Philips Norelco reserves the right to verify the purchase price of the product and limit refunds not to exceed suggested retail price.

To obtain money-back guarantee return authorization form, call 1-800-243-3050. Please allow 4-6 weeks for delivery of check.

Full Two-Year Warranty

Philips Electronics North America Corporation warrants each new Philips Norelco product, Model G370 against defects in materials or workmanship for a period of two years (cutters for up to four years) from the date of purchase, and agrees to repair or replace any defective product without charge.

IMPORTANT: This warranty does not cover damage resulting from accident, misuse or abuse, lack of reasonable care, the affixing of any attachment not provided with the product or loss of parts or subjecting the product to any but the specific voltage.* Use of unauthorized replacement parts will void this warranty.

PHILIPS ELECTRONICS NORTH AMERICA CORPORATION WILL NOT PAY FOR WARRANTY SERVICE PERFORMED BY A NON-AUTHORIZED REPAIR SERVICE AND WILL NOT REIMBURSE THE CONSUMER FOR DAMAGE RESULTING FROM WARRANTY SERVICE PERFORMED BY A NON-AUTHORIZED REPAIR SERVICE.

NO RESPONSIBILITY IS ASSUMED FOR ANY SPECIAL, INCIDENTAL OR CONSEQUENTIAL DAMAGES.

In order to obtain warranty service, simply go to www.philips.com/norelco or call 1-800-243-3050 for assistance. It is suggested that for your protection you return shipments of product by insured mail, insurance prepaid. Damage occurring during shipment is not covered by this warranty. **NOTE:** No other warranty, written or oral, is authorized by Philips Electronics North America Corporation. This warranty gives you specific legal rights, and you may also have other rights which vary from state to state. Some states do not allow the exclusion or limitation of incidental or consequential damages, so the above exclusion and limitations may not apply to you.

*Read enclosed instructions carefully.

Manufactured for:
Philips Consumer Lifestyle
A Division of Philips Electronics North America Corporation
P.O. Box 10313, Stamford, CT 06904



This symbol on the product's nameplate means it is listed by Underwriters' Laboratories, Inc.

Norelco is a Registered Trademark of Philips Electronics North America Corporation.

AccuControl is a Trademark of Philips Electronics North America Corporation.

PHILIPS is a Registered Trademark of Koninklijke Philips Electronics N.V.

© 2010 Philips Electronics North America Corporation. All Rights Reserved.