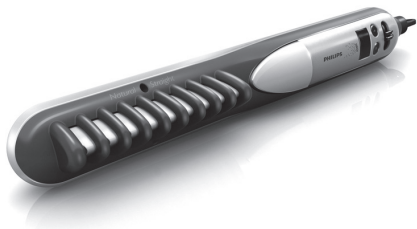


Register your product and get support at
www.philips.com/welcome

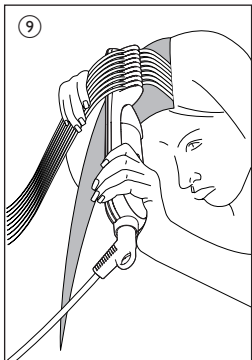
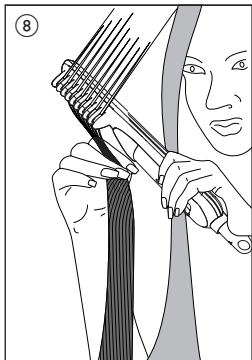
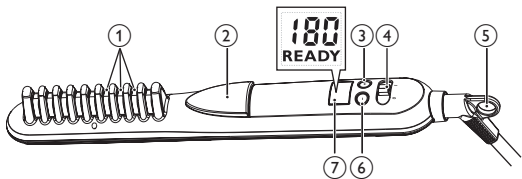
Straightener

HP8297



EN User manual

PHILIPS



Congratulations on your purchase, and welcome to Philips! To fully benefit from the support that Philips offers, register your product at www.philips.com/welcome.

1 Important

Read this user manual carefully before you use the appliance and keep it for future reference.

- **WARNING:** As straighteners reach high temperatures, keep them out of the reach of children during heat-up, use and cool-down to avoid burnings.
- **WARNING:** Do not use this appliance near water.
- When the appliance is used in a bathroom, unplug it after use since the proximity of water presents a risk, even when the appliance is switched off.
- **WARNING:** Do not use this appliance near bathtubs, showers, basins or other vessels containing water.
- Before you connect the appliance, ensure that the voltage indicated on the appliance corresponds to the local power voltage.
- Do not use the appliance for any other purpose than described in this manual.
- Only use the appliance on dry hair. Do not use the appliance on artificial hair.
- Keep the hot surfaces of the appliance away from your skin.
- When the appliance is connected to the power, never leave it unattended.
- Always unplug the appliance after use.
- When the appliance is hot, keep it on a heat-resistant surface and never cover the appliance with anything, such as a towel or clothing.
- Never use any accessories or parts from other manufacturers or that Philips does not specifically recommend. If you use such accessories or parts, your guarantee becomes invalid.



- Do not wind the mains cord round the appliance.
- If you use the appliance on color-treated hair, the straightening plates may stain.
- If the mains cord is damaged, you must have it replaced by Philips, a service centre authorised by Philips or similarly qualified persons in order to avoid a hazard.
- This appliance is not intended for use by persons (including children) with reduced physical, sensory or mental capabilities, or lack of experience and knowledge, unless they have been given supervision or instruction concerning use of the appliance by a person responsible for their safety.
- Children should be supervised to ensure that they do not play with the appliance.
- For additional protection, we advise you to install a residual current device (RCD) in the electrical circuit that supplies the bathroom. This RCD must have a rated residual operating current not higher than 30mA. Ask your installer for advice.

Electromagnetic fields (EMF)

This appliance complies with all standards regarding electromagnetic fields (EMF). If handled properly and according to the instructions in this user manual, the appliance is safe to use based on scientific evidence available today.

Environment

Do not throw away the appliance with the normal household waste at the end of its life, but hand it in at an official collection point for recycling. By doing this, you help to preserve the environment.



2 Straighten your hair

Ensure that you select a temperature setting that is suitable for your hair. Always select a low setting when you use the straightener for the first time.

Hair Type	Temperature Setting
Thick or coarse	Mid to High (170 °C and above)
Fine or medium-textured	Low to Mid (160 °C and below)
Pale, blonde, bleached or color-treated	Low (Below 160 °C)

- 1 Connect the plug to a power supply socket.
- 2 Slide the On/Off switch (④) to **I** to switch on the appliance.
 - ↳ The display screen (⑦) lights up and the default temperature setting 180 °C is displayed.
- 3 Press the + (③) or - (⑥) buttons to select a suitable temperature setting for your hair:
 - ↳ When the comb plates have heated up to the selected temperature, the stable indication "**READY**" is displayed.
- 4 The ion function activates when the appliance is switched on, which provides additional shine and reduces frizz.
 - ↳ When the function is on, a special odor may be smelt and a sizzling noise may be heard, which is normal and caused by the ions that are generated.
- 5 Comb your hair (**with a brush or comb**) and take a section that is not wider than 5cm for straightening.
- 6 Press the button (②) to open the comb teeth (①).
- 7 Insert your hair evenly between the comb teeth and release the comb button that the hairs are clamped between the teeth.
- 8 Slide the comb straightener down the length of the hair in a single motion (max. 10 seconds) from root to tip, without stopping to prevent overheating.

Note: Hold the tips of your hair with your other hand during the whole straightening process, so that the hair remains evenly distributed between the teeth of the straightening comb. This avoids that hairs fall out of the teeth before they are straightened.

9 After 20 seconds, repeat step 6 to 8 until you achieve the desired look.

10 To straighten the rest of your hair, repeat steps 6 to 9.

Note: The appliance has auto-shut off function. It switches off automatically after 60 minutes. You can reactivate the appliance by setting the On/Off switch (④) off and on again.

Straightening while reducing the volume

1 To reduce the volume, place the straightening comb on top of the section of hair and slide them slowly along the section from roots to tips like you do when brushing the hair with a normal brush.

Straightening while increasing the volume

Volume at hair-line: (⑧)

1 Place the straightening comb under your hair. It will straighten while lifting the roots and giving your hair volume.

Volume at roots: (⑨)

- 1 To generate a volume effect at the roots, place the straightening comb under your hair as close as possible to the roots. Make sure that the comb goes through your hair completely.
- 2 Turn the straightening comb about 45° while gently sliding it towards the tips. This rotating movement will give your roots a maximum of volume.

To create flicks:

1 Straighten a section of hair and turn the straightening comb half-circle inwards (or outwards) when it reaches the end of the hair.

Note: Hold the tips of your hair with your other hand during the whole straightening process.

2 Hold the straightening comb in the same position for 2 to 3 seconds, and then release it.

After use:

- 1 Switch off the appliance and unplug it.
- 2 Place it on a heat-resistant surface until it cools down.
- 3 Clean the appliance and plates by damp cloth.
- 4 Keep it in a safe and dry place, free of dust. You can also hang it with the hanging loop (5) or store it in the supplied pouch.

3 Guarantee and service

If you need information e.g. about replacement of an attachment or if you have a problem, please visit the Philips website at www.philips.com or contact the Philips Customer Care Centre in your country (you find its phone number in the worldwide guarantee leaflet). If there is no Consumer Care Centre in your country, go to your local Philips dealer.

4 Troubleshooting

Problem	Cause	Solution
The appliance does not work at all.	The power socket to which the appliance has been connected may not live.	Ensure the socket is live.
	The mains cord of the appliance may be damaged.	If the mains cord is damaged, you must have it replaced by Philips, a service centre authorised by Philips or similarly qualified persons in order to avoid a hazard.



© Royal Philips Electronics N.V. 2010
All rights reserved.

Specifications are subject to change without notice.
Trademarks are the property of Koninklijke Philips
Electronics N.V. or their respective owners.

3140 035 22141



100% recycled paper
100% papier recyclé