

在以下网站注册并获得支持
www.philips.com.cn/welcome

HP4722



EN User manual ZH-CN 用户手册

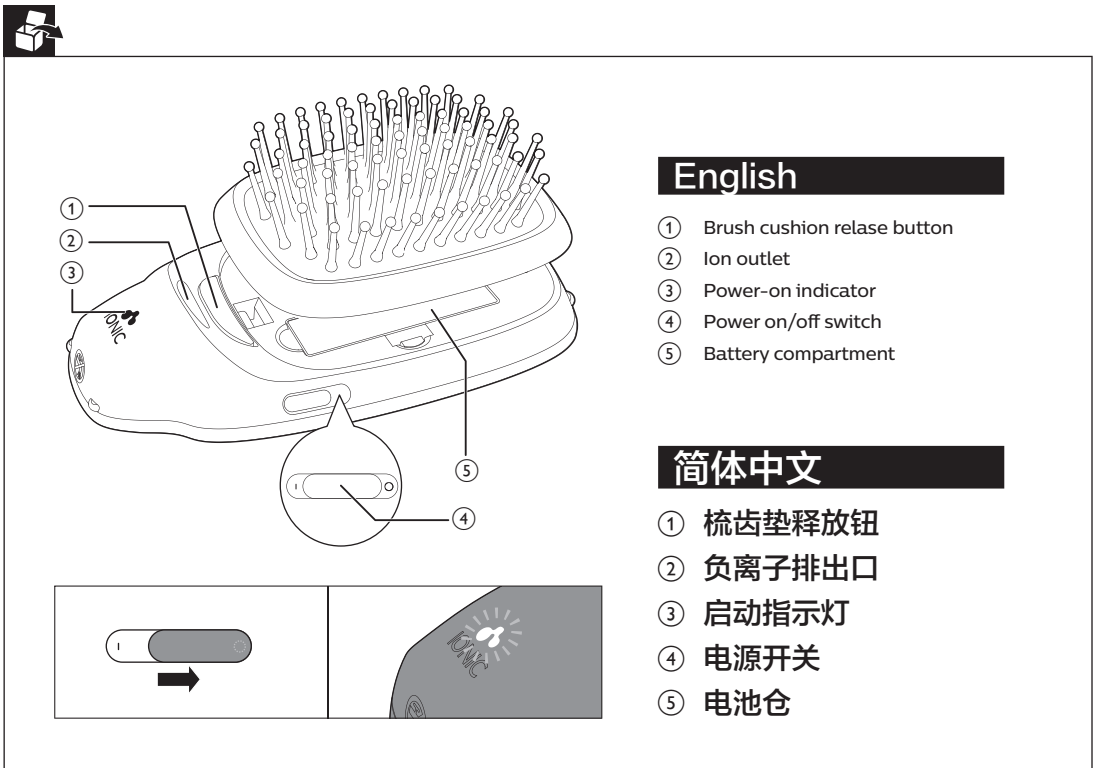
PHILIPS

PHILIPS

产品：飞利浦负离子美发造型梳
型号：HP4722
额定电压：1.5V
额定电流：150 mA
生产日期：请见产品本体
产地：中国广东广州

飞利浦（中国）投资有限公司
上海市静安区灵石路718号A1幢
全国顾客服务热线：4008 800 008

本产品根据国标GB4706.1-2005,
GB4706.15-2008制造



English

Congratulations on your purchase, and welcome to Philips! To fully benefit from the support that Philips offers, register your product at www.philips.com.cn/welcome.

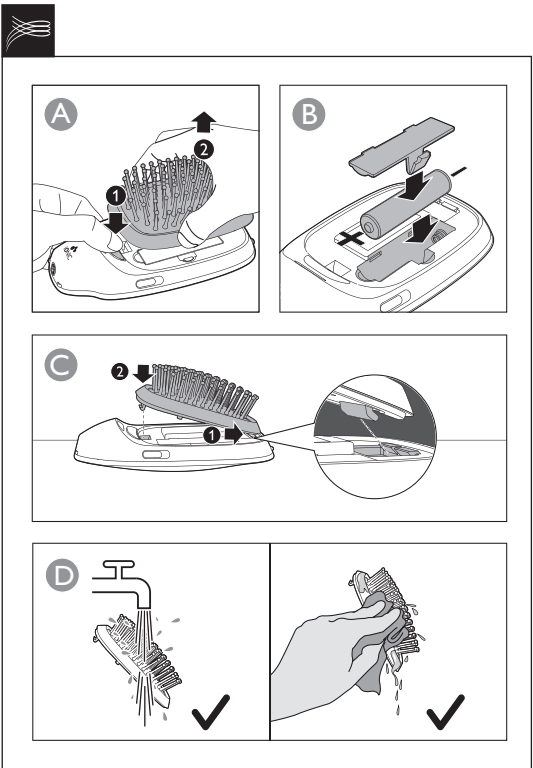
1 Important

Read this user manual carefully before you use the appliance and keep it for future reference.

- WARNING: Do not use this appliance near water.
- Never immerse the brush body in water or any other liquid, nor rinse it under the tap.
- Always switch off the appliance after use.
- This appliance can be used by children aged from 8 years and above and persons with reduced physical, sensory or mental capabilities or lack of

experience and knowledge if they have been given supervision or instruction concerning use of the appliance in a safe way and understand the hazards involved.

- Children shall not play with the appliance. Cleaning and user maintenance shall not be made by children without supervision.
- Always return the appliance to a service centre authorized by Philips for examination or repair. Repair by unqualified people could result in an extremely hazardous situation for the user.
- Never use any accessories or parts from other manufacturers or that Philips does not



specifically recommend. If you use such accessories or parts, your guarantee becomes invalid.

- Do not use the appliance for any other purpose than described in this manual.
- Do not use the appliance on artificial hair.
- Never block the ion outlet.
- Do not insert metal objects into the ion outlet to avoid unexpected dangers.
- Do not use this ion brush together with hairdryer for styling purpose.
- Never rinse the brush body under tap water.

- Do not expose the brush under sunlight for long period of time. The ultraviolet ray may lead to aging in the brush, which the product can break easily.
- Use and store the appliance at a temperature between 15°C and 35°C.
- The appliance runs on one 1.5V AAA alkaline battery.
- Open battery compartment in order to install or remove the battery.
- The bypack battery is not rechargeable. Non-rechargeable batteries are not to be recharged.
- The rechargeable battery must be removed out of the appliance before being charged.
- Batteries are to be inserted with the correct polarity.
- Exhausted batteries are to be removed from the appliance and safely disposed of.
- If the appliance is to be stored unused for a long period, the batteries should be removed.
- The supply terminals are not to be short-circuited.

Electromagnetic fields (EMF)

This Philips appliance complies with all applicable standards and regulations regarding exposure to electromagnetic fields.

Recycling

This symbol means that this product shall not be disposed of with normal household waste (2012/19/EU). This symbol means that this product contains disposable batteries which shall not be disposed of with normal household waste (2006/66/EC).

Follow your country's rules for the separate collection of electrical and electronic products and batteries. Correct disposal helps prevent negative consequences for the environment and human health.

Removing disposable batteries

To remove disposable batteries, see the instructions for placing and/or removing batteries in the user manual.

Note

- Make sure the brush cushion is completely dried before re-attaching to the brush body.
- Never use corrosive liquid to clean the brush cushion as it may cause damage to the product. It is recommended to use household cleanser to clean the brush cushion if needed.
- You may hear a sizzling sound. It's common because it is caused by the ion generator.

Tips & Tricks

- 1 The ionic brush performs better when the hair is slightly wet.
- 2 If you wish to use the brush after washing your hair, dry your hair until 70% dry. Do not over dry your hair because it may affect the result.
- 3 Comb your hair slowly and repeatedly from the root until your hair is smooth. The time to comb varies according to your hair type and length.
- 4 It is not easy to observe the effect if:
 - you have short or natural curly hair.
 - your hair is easy to curl.
 - your hair condition is too dry or damaged.
 - you have straightening perm within 3 to 4 months.
 - you have some short newly grown hair.
- 5 Apply leave in hair conditioner to your hair after brushing for best result.

2 Guarantee and service

If you need information e.g. about replacement of an attachment or if you have a problem, please visit the Philips website at www.philips.com.cn/support or contact the Philips Customer Care Centre in your country (you find its phone number in the worldwide guarantee leaflet). If there is no Consumer Care Centre in your country, go to your local Philips dealer.

The bristle has a guarantee period of 3 months. If needed, you may purchase a separate bristle from Philips service center.

3 Troubleshooting

Problem	Cause	Solution
The appliance does not work.	The battery is exhausted.	Replace the battery.
	You have not placed the battery in the battery compartment correctly.	Put the battery in the compartment in accordance with the + and - indications in the compartment.
	You have not attached the battery compartment cover properly.	Push the battery compartment cover onto the appliance ('click').
The ion indicator does not light up	The battery is installed incorrectly. The battery is nearly empty.	Check if the battery is installed with the right pole. Replace with a new battery.

简体中文

感谢您的惠顾，欢迎光临飞利浦！为了您能充分享受飞利浦提供的支持，请在 www.philips.com.cn/welcome 注册您的产品。

1 重要事项

使用产品之前，请仔细阅读本用户手册，并妥善保管以供日后参考。

- 警告：请勿在靠近水的地方使用本产品。
- 警告符号注释：禁止用在打开的水龙头下进行清洗。
- 使用后，务必关闭产品电源。
- 本产品适合由 8 岁或以上年龄的儿童以及肢体不健全、感觉或精神上有所障碍或缺乏相关经验和知识的人士使用，但前提是有人对他们使用本产品进行监督或指导，以确保

他们安全使用，并且让他们明白相关的危害。

- 不得让儿童玩耍本产品。不要让儿童在无人监督的情况下进行清洁和保养。
- 产品只能送到飞利浦授权的服务中心检修。由不合格人员进行修理可能将用户置于极度危险的境地。
- 切勿使用由其它制造商生产的，或未经飞利浦特别推荐的任何附件或部件。如果使用此类附件或部件，您的保修将失效。
- 请勿将本产品用于本手册中说明以外的任何其它用途。
- 请勿将产品用于假发。
- 请勿阻塞负离子排出口。
- 请勿将金属物体插入负离子排出口，避免出现意外危险。
- 请勿将负离子造型梳与电吹风一起使用进行美发造型。
- 请勿在水龙头下冲洗梳体。
- 请勿将造型梳长时间曝晒于阳光下。紫外线可能导致造型梳老化，造成产品容易折断。
- 建议在 15°C 至 35°C 之间的温度下使用和存放产品。
- 产品使用一节1.5V AAA碱性电池工作。
- 打开电池盖以安装或取出电池。
- 随附的电池为非可充电电池。不可对非可充电电池进行充电。
- 若使用可充电电池，电池充电前须将其从产品中取出。
- 安装电池时需确保极性正确。
- 电池电量耗尽后，应将其从产品中取出并安全地弃置。

- 若长期不使用本产品, 应将电池取出。
- 产品的正负极之间不可短路。

电磁场 (EMF)

本飞利浦产品符合所有有关暴露于电磁场的适用标准和法规。

回收

-此符号表示本产品不应与普通生活垃圾一同弃置 (2012/19/EU)。此符号表示本产品包含一次性电池, 不应与普通生活垃圾一同弃置 (2006/66/EC)。



-请遵循您所在国家/地区的电器与电子产品及电池分类回收规定。正确弃置产品有助于避免对环境 and 人类健康造成负面影响。

拆卸一次性电池

要拆卸一次性电池, 请参阅用户手册中关于安装和/或拆卸电池的说明进行操作。

注意

- 确保梳齿垫完全干燥后再装回梳体。
- 请勿使用腐蚀性液体清洁梳齿垫, 否则可能会损坏产品。必要时建议使用家用清洁剂清洁梳齿垫。
- 可能会听到滋滋声。这通常是由负离子发生器引起的。

提示和诀窍

- 1 负离子美发梳在头发微湿时效果更佳。
- 2 如果您想要在洗发后使用该美发梳, 请将头发吹至 7 成干。请不要过度吹干头发, 这样会影响效果。
- 3 从发根缓慢重复地梳理头发, 直至头发顺滑。梳发时间因头发类型和长度而异。

- 4 在以下情况下不容易看到效果:
 - 头发较短或自然卷
 - 头发容易卷曲
 - 发质太干或已受损
 - 在 3 到 4 个月内拉直过卷发
 - 有一些新长出来的短发
- 5 梳发后在头发上使用头发免洗护发素以达到最佳效果。

2 保修与服务

如果您需要了解信息 (如更换附件的相关信息) 或有任何疑问, 请访问飞利浦网站 www.philips.com.cn/support。您也可以与您所在地的飞利浦客户服务中心联系 (可从保修卡中找到其电话号码)。如果您所在的国家/地区没有 Philips 客户服务中心, 请向当地的 Philips 经销商求助。

此齿梳有三个月的质保期。如需更换齿梳, 可向飞利浦客户服务中心咨询。

3 故障排除

问题	原因	解决方法
产品无法工作。	电池电量已耗尽。	更换电池。
	您未将电池正确放入电池仓。	按照电池仓中的 + 和 - 指示将电池装入电池仓。
	电池仓盖安装不正确。	将电池仓盖按回产品上 (可听到“咔哒”一声)。
负离子指示灯不亮	电池安装不正确。	检查是否正确极性装入电池。
	电池电量几乎耗尽。	换用新电池。

保留备用

出版日期: 2018-06-20



保修及服务:

此产品是一件设计精良, 用高品质元件制造之家用电器, 在正常使用及保养下应能发挥其优越性能。在购买日期后二年内, 若发生任何因制造工艺或元器件造成之损坏, 飞利浦中国维修服务中心将为持证用户提供免费门市维修服务, 视情况更换零件或整个产品。

无论在购买中或保期后, 只要飞利浦正式行销该产品的任何国家皆可获得维修服务。



若飞利浦在当地无行销该项产品, 飞利浦同样提供维修服务, 但可能因未储备所需零件, 维修时间可能较长, 敬请谅解。请联络当地飞利浦经销商, 或飞利浦服务部门。

若您需洽询相关资讯, 或遇困难事项时, 请联络当地飞利浦维修服务中心, 或向飞利浦服务热线咨询。

中国顾客服务热线: 4008 800 008
(用户需承担本地通话费)。
网址: <http://www.philips.com.cn>

网上会员注册与产品注册:

- 1) 登陆 <http://www.philips.com.cn/welcome>
- 2) 点击“创建新账户”, 创建您的飞利浦账号
- 3) 点击“注册产品”, 通过产品名称或产品型号查找产品, 完成产品注册

服务须知

需要此产品的售后服务,

拨打服务热线: 4008 800 008

在维修服务过程中有任何意见,

欢迎致函飞利浦 (中国) 投资有限公司解决疑难。

飞利浦 (中国) 投资有限公司

上海市静安区灵石路718号A1幢

产品中有害物质的名称及含量						
部件名称	有害物质					
	铅 (Pb)	汞 (Hg)	镉 (Cd)	六价铬 (Cr6+)	多溴联苯 (PBB)	多溴二苯醚 (PBDE)
集成电路板	X	O	O	O	O	O
本表格依据SJ/T 11364的规定编制。						
O: 表示该有害物质在该部件所有均质材料中的含量均在GB/T 26572规定的限量要求以下。						
X: 表示该有害物质至少在该部件的某一均质材料中的含量超出GB/T 26572规定的限量要求。						

* 该表格中所显示的“有害物质”在产品正常使用情况下不会对人身和环境产生任何伤害。

* 该表格中所显示的“有害物质”及其存在的部件向消费者和回收处理从业者提供相关物质的存在信息, 有助于产品废弃时的妥善处理。

4222.005.0422.4