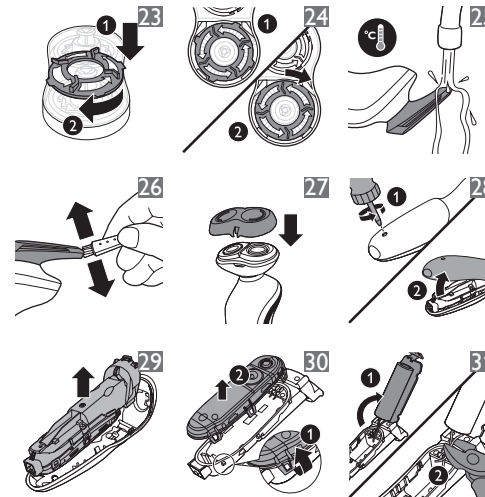
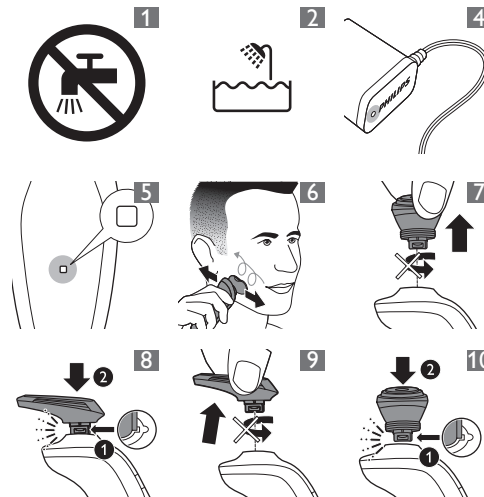
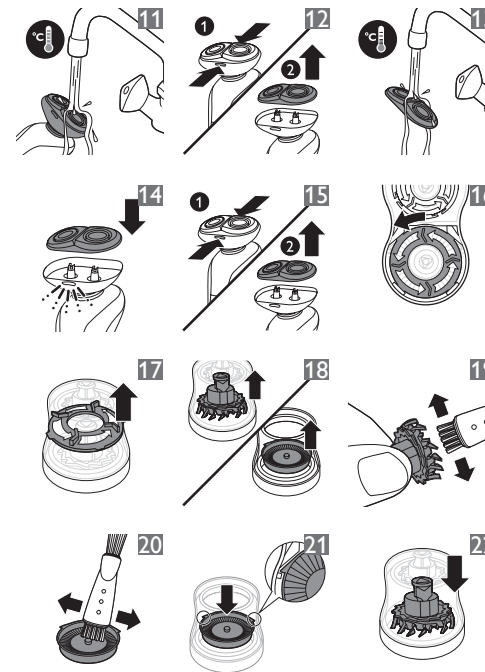
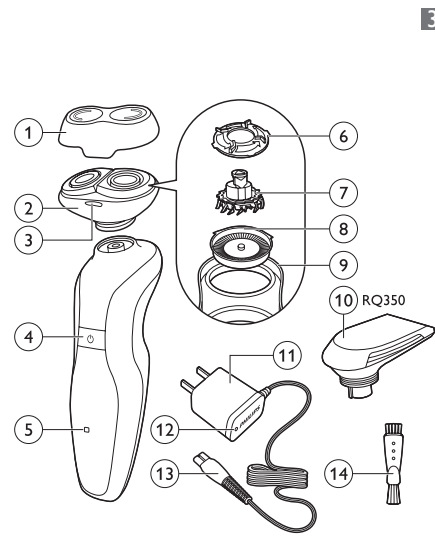




PHILIPS



ENGLISH

Introduction

Congratulations on your purchase and welcome to Philips! To fully benefit from the support that Philips offers, register your product at www.philips.com/welcome.

Important safety information

Read this important information carefully before you use the appliance and its accessories and save it for future reference. The accessories supplied may vary for different products.

Danger

- Keep the adapter dry (Fig. 1).

Warning

- The adapter contains a transformer. Do not cut off the adapter to replace it with another plug, as this causes a hazardous situation.
- This appliance is not intended for use by persons (including children) with reduced physical, sensory or mental capabilities, or lack of experience and knowledge, unless they have been given supervision or instruction concerning use of the appliance by a person responsible for their safety.
- Children should be supervised to ensure that they do not play with the appliance.
- Always unplug the shaver before you clean it under the tap.
- Always check the appliance before you use it. Do not use the appliance if it is damaged, as this may cause injury. Always replace a damaged part with one of the original type.

Caution

- Never use water hotter than 80°C to rinse the shaver.
- Only use this appliance for its intended purpose as shown in the user manual.
- For hygienic reasons, the appliance should only be used by one person.
- Do not use the adapter in or near wall sockets that contain or have contained an electric air freshener to prevent irreparable damage to the adapter.
- Never use compressed air, scouring pads, abrasive cleaning agents or aggressive liquids such as petrol or acetone to clean the appliance.
- Remove the detachable cord from the handheld part before cleaning this part in water.



- Water may drip from the socket at the bottom of the shaver when you rinse it. This is normal and not dangerous because all electronics are enclosed in a sealed power unit inside the shaver.

Electromagnetic fields (EMF)

- This Philips appliance complies with all applicable standards and regulations regarding exposure to electromagnetic fields.

General

- This shaver is waterproof. It is suitable for use in the bath or shower and for cleaning under the tap. For safety reasons, the shaver can therefore only be used without cord (Fig. 2).
- The appliance is suitable for mains voltages ranging from 100 to 240 volts.
- The adapter transforms 100-240 volts to a safe low voltage of less than 24 volts.
- Maximum noise level: Lc = 69dB(A)

General description (Fig. 3)

- 1 Protection cap
- 2 Shaving unit with shaving head holder
- 3 Shaving head holder release buttons
- 4 On/off button
- 5 'Battery low' light
- 6 Retaining ring
- 7 Cutter
- 8 Shaving guard
- 9 Shaving head holder
- 10 Trimmer (RQ350 only)
- 11 Adapter
- 12 Charging light
- 13 Small plug
- 14 Cleaning brush

Charging

It takes approx. 10 hours to fully charge the battery. A fully charged shaver provides up to 30 shaving minutes.

If you have a heavy beard, the shaver may provide less than 30 shaving minutes. The number of shaving minutes may also vary over time, depending on your shaving behaviour, cleaning habits and beard type.

'Charging' indication

- When the shaver is charging, the light on the adapter lights up (Fig. 4).

'Battery low' light

- When the battery is almost empty, the light on the shaver lights up (Fig. 5).

Charging

Do not charge the shaver in the packaging.

- 1 Put the small plug in the shaver.
- 2 Put the adapter in the wall socket.
 - ▶ The light on the adapter lights up to show that the shaver is charging.

Note: The light on the adapter does not change colour and does not go out when the shaver is fully charged.

Using the shaver

Note: You cannot use the shaver while it is connected to the mains.

Shaving

Skin adaptation period

Your first shaves may not bring you the result you expect and your skin may even become slightly irritated. This is normal. Your skin and beard need time to adapt to any new shaving system. We advise you to shave regularly (at least 3 times a week) for a period of 3 weeks to allow your skin to adapt to the new shaver. During this period, use your new electric shaver exclusively and do not use other shaving methods. If you use different shaving methods, it is more difficult for your skin to adapt to the new shaving system.

- 1 Press the on/off button to switch on the shaver.
- 2 Move the shaving heads over your skin. Make both straight and circular movements (Fig. 6).
- 3 Press the on/off button to switch off the shaver.
- 4 Clean the shaver after every shave (see chapter 'Cleaning and maintenance').

Trimming (RQ350 only)

You can use the trimmer to groom your sideburns and moustache.

- 1 Pull the shaving unit straight off the shaver (Fig. 7).
- 2 Insert the lug of the trimmer into the slot in the top of the shaver (1). Then press down the trimmer (2) to attach it to the shaver ('click') (Fig. 8).
- 3 Press the on/off button to switch on the trimmer. You can now start trimming.
- 4 Press the on/off button to switch off the trimmer.

- 5 Pull the trimmer straight off the shaver (Fig. 9).

Note: Do not twist the trimmer while you pull it off the shaver.

- 6 Insert the lug of the shaving unit into the slot in the top of the shaver (1). Then press down the shaving unit (2) to attach it to the shaver ('click') (Fig. 10).

Cleaning and maintenance

Detach the handheld part from the supply cord before cleaning it in water.

Never use scouring pads, abrasive cleaning agents or aggressive liquids such as petrol or acetone to clean the shaver and its accessories.

- Clean the shaver after every shave.
- Clean the shaving heads frequently with Philips Shaving Head Cleaning Spray (HQ110) for optimal shaving performance.
- You can clean the outside of the shaver with a damp cloth. Do not clean the shaving unit with a cloth.

Cleaning the shaving unit

Be careful with hot water. Always check if the water is not too hot, to prevent your hands from getting burnt.

- 1 Switch off the shaver, remove adapter from wall socket and pull the appliance/small plug out of the shaver.
- 2 Rinse the shaving unit under a hot tap for some time (Fig. 11).

Note: You can also clean the shaving unit with the cleaning brush supplied.

- 3 After rinsing the appliance under the tap, hold it upright for 10-15 seconds to allow water to run out of the bottom.
- 4 Press the release buttons on the shaving unit (1) and pull the shaving head holder off the shaving unit (2). (Fig. 12)
- 5 Rinse the shaving head holder under a hot tap for 30 seconds (Fig. 13).

Note: You can also clean the shaving head holder with the cleaning brush supplied.

- 6 Carefully shake off excess water and let the shaving head holder dry.

Never dry the shaving head holder with a towel or tissue, as this may damage the shaving heads.

- 7 Reattach the shaving head holder to the shaving unit ('click') (Fig. 14).

Extra-thorough cleaning method

- 1 Switch off the shaver.
- 2 Press the release buttons on the shaving unit (1) and pull the shaving head holder off the shaving unit (2) (Fig. 15).
- 3 To unlock the orange retaining ring, turn it in the direction of the arrows indicated in and on the retaining ring (Fig. 16).
- 4 Lift the retaining ring out of the shaving head holder. (Fig. 17)
- 5 Remove the cutter and the shaving guard (Fig. 18).

Note: Do not clean more than one cutter and shaving guard at a time, since they are all matching sets. If you accidentally put a cutter in the wrong shaving guard, it may take several weeks before optimal shaving performance is restored.

- 6 Clean the cutter with the cleaning brush supplied (Fig. 19).
- 7 Clean the inside of the shaving guard (Fig. 20).
- 8 After cleaning, place the shaving guard back into the shaving head holder. Make sure the two wings fit exactly into the recesses of the shaving head holder (Fig. 21).
- 9 Place the cutter back into the shaving guard with the cutter legs pointing downwards (Fig. 22).
- 10 Place the retaining ring back onto the shaving head holder (1). To reattach the retaining ring, turn it against the direction of the arrows indicated in and on the retaining ring (2) (Fig. 23).

Note: Make sure the retaining ring is fixed properly. The four wings of the retaining ring have to be located exactly under the recesses of the shaving head holder (Fig. 24).

- 11 Reattach the shaving head holder to the shaving unit ('click'). (Fig. 14)

Note: If the shaving unit does not close smoothly, check if you have positioned the shaving heads properly and if the retaining rings are fixed properly.

Cleaning the trimmer (RQ350 only)

Clean the trimmer after every use.

Cleaning the trimmer under the tap

- 1 Switch on the appliance with the trimmer attached.
- 2 Rinse the trimmer under a hot tap for some time. (Fig. 25)
- 3 After cleaning, switch off the appliance.
- 4 After rinsing the appliance under the tap, hold it upright for 10-15 seconds to allow water to run out of the bottom.

Cleaning the trimmer with the cleaning brush supplied

- 1 Switch off the trimmer.
- 2 Clean the trimmer with the short-bristled side of the cleaning brush. Brush up and down along the trimmer teeth. (Fig. 26)

Tip: For optimal trimmer performance, lubricate the trimmer teeth frequently with Philips Shaving Head Cleaning Spray (HQ110).

Storage

Note: Make sure the shaving unit is dry before you store the shaver.

- 1 Put the protection cap on the shaver after use to prevent damage and to avoid dirt accumulation in the shaving heads (Fig. 27).

Replacement

For maximum shaving performance, we advise you to replace the shaving heads every two years. Replace damaged shaving heads right away. Only replace the shaving heads with original RQ32 Philips shaving heads. See also chapter 'Ordering accessories'.

- 1 Switch off the shaver.
- 2 Press the release buttons on the shaving unit and pull the shaving head holder off the shaving unit (Fig. 12).
- 3 To unlock the orange retaining ring, turn it in the direction of the arrows indicated in and on the retaining ring (Fig. 16).
- 4 Lift the retaining ring out of the shaving head holder (Fig. 17).
- 5 Remove the shaving heads and place new ones in the shaving head holder.

Make sure the two wings of the shaving heads fit exactly into the recesses.

- 6 Place the retaining ring back onto the shaving head holder (1). To reattach the retaining ring, turn it against the direction of the arrows indicated in and on the retaining ring (2) (Fig. 23).

Note: Make sure the retaining ring is fixed properly. The four wings of the retaining ring have to be located exactly under the recesses of the shaving head holder (Fig. 24).

- 7 Reattach the shaving head holder to the shaving unit ('click') (Fig. 14).

Note: If the shaving unit does not close smoothly, check if you have positioned the shaving heads properly and if the retaining rings are fixed properly.

Ordering accessories

To buy accessories or spare parts, visit www.shop.philips.com/service or go to your Philips dealer. You can also contact the Philips Consumer Care Centre in your country (see the worldwide guarantee leaflet for contact details). The following accessories are available:

- RQ32 Philips shaving heads
- RQ575 Philips cleansing brush attachment
- HQ110 Philips Shaving Head Cleaning Spray

Recycling

Do not throw away the appliance with the normal household waste at the end of its life, but hand it in at an official collection point for recycling. By doing this, you help to preserve the environment.

Removing the rechargeable shaver battery

Only remove the rechargeable battery when you discard the shaver. Make sure the rechargeable battery is completely empty when you remove it.

Be careful, the battery strips are sharp.

- 1 Undo the screw in the back panel of the shaver with a screwdriver (1) and remove the back panel (2) (Fig. 28).
- 2 Bend the hooks aside and remove the power unit (Fig. 29).
- 3 Break the snap hooks (1) and remove the front panel of the power unit (2) (Fig. 30).
- 4 Take out the battery holder (1) and cut the battery tags with a pair of cutting pliers (2) (Fig. 31).
- 5 Remove the rechargeable battery.

Guarantee and support

If you need information or support, please visit www.philips.com/support or read the separate worldwide guarantee leaflet.

Guarantee restrictions

The shaving heads (cutters and guards) are not covered by the terms of the international guarantee because they are subject to wear.

Troubleshooting

This chapter summarises the most common problems you could encounter with the appliance. If you are unable to solve the problem with the information below, visit www.philips.com/support for a list of frequently asked questions or contact the Consumer Care Centre in your country.

Problem	Possible cause	Solution
The shaver does not shave as well as it used to.	The shaving heads are damaged or worn.	Replace the shaving heads (see chapter 'Replacement').
	The shaving heads are dirty.	Clean the cutters and guards with the cleaning brush supplied (see chapter 'Cleaning and maintenance', section 'Extra-thorough cleaning method').
	Long hairs obstruct the shaving heads.	Clean the cutters and guards with the cleaning brush supplied (see chapter 'Cleaning and maintenance', section 'Extra-thorough cleaning method').
The shaver does not work when I press the on/off button.	The rechargeable battery is empty.	Recharge the battery (see chapter 'Charging').

Problem	Possible cause	Solution
	The temperature of the shaver is too high. In this case, the shaver does not work.	Let the shaver cool down. As soon as the temperature of the shaver has dropped sufficiently, you can switch on the shaver again.
The shaver does not work, even though it is connected to the mains.	This shaver is not designed to be used directly from the mains.	Remove the adapter from the wall socket and the small plug from the shaver. You can now switch on the shaver again.
My skin is irritated after shaving.	Your skin needs time to get used to the Philips shaving system.	Skin irritation during the first 2-3 weeks of use is possible. After this period, the skin irritation usually disappears.
	The shaving heads are damaged or worn.	Replace the shaving heads (see chapter 'Replacement').
The rotation speed of the shaving heads is lower than usual.	Too much dirt has collected in the shaving heads.	Clean the shaving heads. See chapter 'Cleaning and maintenance'.
	The rechargeable battery is low.	Recharge the battery. See chapter 'Charging'.
The shaving heads do not stay in place.	You did not fix the retaining rings properly.	The retaining ring is fixed properly if the four wings of the retaining ring are located exactly under the recesses of the shaving head holder.

Problem	Possible cause	Solution
After fully charging the shaver, it provides less than 30 shaving minutes.	If you have a heavy beard, the shaver may provide less than 30 shaving minutes. The number of shaving minutes may also vary over time, depending on your shaving behaviour, cleaning habits and beard type.	

繁體中文

簡介

恭喜您購買本產品並歡迎加入飛利浦！請於 www.philips.com/welcome 註冊您的產品，以善用飛利浦提供的支援。

重要安全資訊

使用本產品及其配件前，請先仔細閱讀此重要資訊，並保留說明以供日後參考。不同的產品可能會隨附不同的配件。

危險

- 請保持轉換器乾燥。(圖 1)

警示

- 轉換器內含一個變壓器。請勿切斷轉換器而以其他插頭取代，否則會造成危險。
- 本產品不適合供下列人士(包括孩童)使用：身體官能或心智能力退化者，或是經驗與使用知識缺乏者。他們需要有負責其安全的人員在旁監督，或指示產品的使用方法，方可使用。
- 請勿讓孩童使用本產品或將本產品當成玩具。
- 在水龍頭下沖洗電鬚刀之前，請先拔掉電鬚刀的插頭。
- 使用前請務必檢查本產品。如有損壞情況，請勿繼續使用，否則可能導致受傷。零件如有受損，請務必以原型號更換之。

警告

- 切勿使用超過 80° C 的熱水沖洗電鬚刀。
- 請僅將本產品用於本使用手冊所述之相關用途。
- 基於衛生的理由，請勿多人共用本產品。
- 切勿在插在或插著電子空氣清新器的電源插座或附近使用轉換器，以免造成轉換器無法修復的損害。
- 絕對不可使用壓縮空氣、鋼絲絨、磨蝕性的清潔劑或侵蝕性的液體(例如汽油或丙酮)清潔本產品。
- 請先取下握把零件的可拆式電源線，再於水中清洗此零件。
- 在您沖洗時，水可能會從電鬚刀底部的插孔滴落。此為正常現象，不會造成危險，因為所有的電子零件都密封於電鬚刀內的電源裝置中。

電磁場 (EMF)

- 本飛利浦產品符合所有電磁場暴露的相關適用標準和法規。

一般

- 本電鬚刀採防水設計，可於泡澡或淋浴時使用，也可直接在水龍頭下沖洗。基於安全考量，本電鬚刀只能以無線方式操作。(圖 2)
- 本產品適用於 100 到 240 伏特的插座電壓。
- 轉換器可將 100-240 伏特的電壓轉換為低於 24 伏特的安全低電壓。
- 最高噪音等級：Lc = 69dB(A)

一般說明 (圖 3)

- 1 保護蓋
- 2 附電鬚刀刀頭固定座的電鬚刀組
- 3 電鬚刀刀頭固定座釋放鈕
- 4 開關按鈕
- 5 「電量不足」指示燈
- 6 固定環
- 7 刀具
- 8 電鬚刀刀網
- 9 電鬚刀刀頭固定座
- 10 鬚角刀 (僅限 RQ350)
- 11 轉換器
- 12 充電指示燈
- 13 小插頭
- 14 清潔刷

充電

產品充電電約需要 10 小時。
 充電電的電鬚刀可刮鬚 30 分鐘。
 若您的鬚鬚濃密，電鬚刀的刮鬚時間可能少於 30 分鐘。此外，取決於您的刮鬚方式、清潔習慣和鬚鬚類型，可使用時間也可能會隨著時日改變。

「充電」指示燈

- 電鬚刀充電時，轉換器的指示燈會亮起。(圖 4)

「電量不足」指示燈

- 電池即將用盡時，電鬚刀的指示燈會亮起。(圖 5)

充電

請勿將電鬚刀置於包裝內充電。

- 1 將小插頭插上電鬚刀。
- 2 將轉換器插入插座。
 - ▶ 轉換器的指示燈亮起時，表示電鬚刀正在充電中。

注意：電鬚刀充電電力後，轉換器指示燈不會變色，也不會熄滅。

使用本電鬚刀

注意：您無法在電鬚刀仍連接在電源上時使用。

刮鬚

皮膚適應期

您第一次刮鬚的結果可能不如您所預期，皮膚甚至可能稍微刺痛。這是正常現象。您的皮膚與鬚鬚需要時間適應任何新的刮鬚系統。我們建議您定期刮鬚(每週至少 3 次)為期 3 週，讓您的肌膚適應新的電鬚刀。這段期間，請只使用您的新電鬚刀，不要使用其他的刮鬚方式。如果您使用不同的刮鬚方式，您的皮膚可能較難適應新的刮鬚系統。

- 1 按下開關按鈕，開啟電鬚刀電源。
- 2 將電鬚刀刀頭在皮膚上移動，請同時用直線及畫圓的方式來移動。(圖 6)
- 3 按下開關按鈕，關閉電鬚刀電源。
- 4 每次刮鬚後，請清潔本電鬚刀(請參閱「清潔與維護」單元)。

修剪 (僅限 RQ350)

您可以使用鬚角刀修整鬚角與鬚鬚。

- 1 從電鬚刀中垂直抽出電鬚刀組。(圖 7)

注意：當您從電鬚刀中抽出電鬚刀組時，請勿旋轉。

- 2 將鬚角刀的突耳插入電鬚刀頂端的凹槽(1)，再將鬚角刀往下壓(2)即可安裝到電鬚刀上(會聽見「喀嗒」一聲)。(圖 8)

- 3 按下開關按鈕，開啟鬚角刀電源。這時即可開始修整。

- 4 按下開關按鈕，關閉鬚角刀電源。

- 5 從電鬚刀中垂直抽出鬚角刀。(圖 9)

注意：當您從電鬚刀中抽出鬚角刀時，請勿旋轉。

- 6 將電鬚刀組的突耳插入電鬚刀頂端的凹槽(1)，再將電鬚刀組往下壓(2)即可安裝到電鬚刀上(會聽見「喀嗒」一聲)。(圖 10)

清潔與維護

拆下電源線的握把零件，再於水中清潔。

切勿使用鋼絲絨、磨蝕性的清潔劑或侵蝕性的液體(例如汽油或丙酮)清潔電鬚刀及其配件。

- 每次刮鬚後均需清潔電鬚刀。
- 為得到最佳的刮鬚性能，請經常使用飛利浦電鬚刀刀頭噴霧清潔劑(HQ110)清潔電鬚刀刀頭。
- 您可以使用濕布清潔電鬚刀外側。請勿用布清潔電鬚刀組。

清洗電鬚刀組

請小心使用熱水。隨時檢查熱水是否太燙，以避免手部燙傷。

- 1 關閉電鬚刀電源，將轉換器從電源插座拔下，並將產品/小插頭自電鬚刀上拔下。
- 2 將電鬚刀組以熱水沖洗一段時間。(圖 11)

注意：您也可以用產品所附的清潔刷清潔電鬚刀組。

- 3 在水龍頭下沖洗本產品，將其直立 10-15 秒，讓水從底部流出。

- 4 按下電鬚刀組的釋放鈕(1)並將電鬚刀刀頭固定座從電鬚刀組取下(2)。(圖 12)

- 5 將電鬚刀刀頭固定座放在熱水龍頭下沖洗 30 秒。(圖 13)

注意：您也可以用產品所附的清潔刷清潔電鬚刀刀頭固定座。

- 6 仔細用乾多餘的水份之後，讓電鬚刀刀頭固定座乾燥。

切勿使用毛巾或紙巾擦乾電鬚刀刀頭固定座，因為此舉可能會造成電鬚刀刀頭損害。

- 7 將電鬚刀刀頭固定座重新接上電鬚刀組(會聽見「喀嗒」一聲)。(圖 14)

超徹底清潔方法

- 1 請關閉電鬚刀電源。
- 2 按下電鬚刀組的釋放鈕 (1) 並將電鬚刀刀頭固定座從電鬚刀組取下 (2)。(圖 15)
- 3 若要鬆開橘色固定環，請將它依固定環上指示的箭頭旋轉。(圖 16)
- 4 從電鬚刀刀頭固定座上取出固定環。(圖 17)
- 5 取下電鬚刀刀網與刀片。(圖 18)

注意：因為刀片及刀網是成對的一組，請勿一次清潔一組以上。如果您不小心將刀片放進錯誤的電鬚刀刀網中，可能要花幾週的時間才能恢復最理想的刮鬚效果。

- 6 使用隨附於電鬚刀的清潔刷來清潔刀片。(圖 19)
- 7 清潔電鬚刀刀網內部。(圖 20)
- 8 清潔完畢後，將電鬚刀刀網裝回電鬚刀刀頭固定座。請確定兩翼準確嵌入電鬚刀刀頭固定座的凹處。(圖 21)
- 9 請將刀片放回電鬚刀刀網，使刀片腳朝下。(圖 22)
- 10 將固定環放回電鬚刀刀頭固定座 (1)。要重新裝回固定環，將固定環朝箭頭標示的反方向旋轉 (2)。(圖 23)

注意：請確定固定環已正確固定。固定環的四翼必須準確嵌入電鬚刀刀頭固定座的凹處。(圖 24)

- 11 將電鬚刀刀頭固定座重新接上電鬚刀組 (會聽見「喀噠」一聲)。(圖 14)

注意：若電鬚刀組無法順利關上，請檢查電鬚刀刀頭安裝位置是否正確，以及固定環是否確實固定。

清潔鬚角刀 (僅限 RQ350)

每次使用後均需清潔鬚角刀。

將鬚角刀放在水龍頭下沖洗

- 1 裝上鬚角刀後，開啟產品電源。
 - 2 將鬚角刀以熱水沖洗一段時間。(圖 25)
 - 3 清潔之後，關閉產品電源。
 - 4 在水龍頭下沖洗本產品，將其直立 10-15 秒，讓水從底部流出。
- 使用隨附的清潔刷來清潔鬚角刀
- 1 關閉鬚角刀電源。

- 2 以清潔刷的短毛側來清潔鬚角刀。請沿著鬚角刀的刀齒上下地刷。(圖 26)

提示：為使鬚角刀發揮最佳性能，請經常使用飛利浦電鬚刀刀頭噴霧清潔劑 (HQ110) 潤滑鬚角刀的刀齒。

收納

注意：務必等電鬚刀組乾燥之後再收納電鬚刀。

- 1 使用後請為電鬚刀蓋上保護蓋以防損壞，並避免污垢累積在電鬚刀刀頭中。(圖 27)

更換

為得到最佳的刮鬚性能，我們建議您請每兩年更換一次電鬚刀刀頭。有損傷的電鬚刀刀頭則請要立即更換。更換電鬚刀刀頭時，限使用原廠 RQ32 飛利浦電鬚刀刀頭。亦請參閱「訂購配件」單元。

- 1 請關閉電鬚刀電源。
- 2 按下電鬚刀組的釋放鈕，將電鬚刀刀頭固定座從電鬚刀組取下。(圖 12)
- 3 若要鬆開橘色固定環，請將它依固定環上指示的箭頭旋轉。(圖 16)
- 4 從電鬚刀刀頭固定座上取出固定環。(圖 17)
- 5 取出電鬚刀刀頭，然後在電鬚刀刀頭固定座換上新的刀頭。

確定電鬚刀刀頭兩翼準確嵌入凹處。

- 6 將固定環放回電鬚刀刀頭固定座 (1)。要重新裝回固定環，將固定環朝箭頭標示的反方向旋轉 (2)。(圖 23)

注意：請確定固定環已正確固定。固定環的四翼必須準確嵌入電鬚刀刀頭固定座的凹處。(圖 24)

- 7 將電鬚刀刀頭固定座重新接上電鬚刀組 (會聽見「喀噠」一聲)。(圖 14)

注意：若電鬚刀組無法順利關上，請檢查電鬚刀刀頭安裝位置是否正確，以及固定環是否確實固定。

訂購配件

若要購買配件或備用零件，請造訪 www.shop.philips.com/service，或洽詢您的飛利浦經銷商。您也可以聯絡您所在國家/地區的飛利浦客戶服務中心 (聯絡詳細資料請參閱全球保證書)。

備有下列配件可供另外選購：

- RQ32 飛利浦電鬚刀刀頭
- RQ575 飛利浦潔顏刷配件
- HQ110 飛利浦電鬚刀刀頭噴霧清潔劑

回收

本產品使用壽命結束時，請勿與一般家庭廢棄物一併丟棄。請將本產品送至政府指定的回收站，此舉能為環保盡一份心力。

取出電鬚刀的充電式電池

棄置本電鬚刀前，請先取出充電式電池。**當您要取出充電式電池時，請確認其電力已完全耗盡。**

電池固定帶非常銳利，請小心。

- 1 用螺絲起子 (1) 轉開電鬚刀的背板螺絲，拆下背板 (2)。(圖 28)
- 2 彎折旁邊的扣鉤，然後取出供電裝置。(圖 29)
- 3 斷開彈簧鉤 (1)，並取下供電裝置的正面護板 (2)。(圖 30)
- 4 取出電池固定座 (1) 並使用剪鉗 (2) 將電池拉片剪斷。(圖 31)
- 5 取出充電式電池。

保固與支援

如果您需要資訊或支援，請造訪：www.philips.com/support，或另行參閱全球保證書。

保固限制

電鬚刀刀頭 (刀具和刀網) 由於其耗損性，因此不在全球保固範圍內。

疑難排解

本單元概述您使用本產品時最常遇到的問題。如果您無法利用以下資訊解決您遇到的問題，請造訪 www.philips.com/support 查看常見問題清單，或聯絡您所在國家/地區的飛利浦客戶服務中心。

問題	可能原因	解決方法
電鬚刀不像平常一樣運作。	電鬚刀刀頭毀壞或磨損。	更換電鬚刀刀頭 (請參閱「更換」單元)。
	電鬚刀刀頭髒污。	使用隨附的清潔刷清潔刀具及刀網 (請參閱「清潔與維護」單元的「超徹底清潔方法」小節)。

問題	可能原因	解決方法
	長鬚鬚卡住電鬚刀刀頭。	使用隨附的清潔刷清潔刀具及刀網 (請參閱「清潔與維護」單元的「超徹底清潔方法」小節)。
我按下開關按鈕時，電鬚刀沒有反應。	充電式電池沒電。	將電池重新充電 (請參閱「充電」單元)。
	電鬚刀過熱。在此情況下，電鬚刀將無法使用。	讓電鬚刀冷卻。等到電鬚刀充分降溫，您就能再度啟動電鬚刀的電源。
電鬚刀無法運作，即使已經連接到電源。	此電鬚刀無法直接插電使用。	將轉換器從電源插座拔除，並將小插頭從電鬚刀上取下。現在您可以再次開啟電鬚刀的電源。
刮鬚之後，皮膚感到刺痛。	您的皮膚需要一些時間才能適應飛利浦電鬚刀系統。	開始使用的第 2 到 3 週，皮膚可能會有過敏現象。過了這段時間，皮膚過敏的症狀通常會消失。
	電鬚刀刀頭毀壞或磨損。	更換電鬚刀刀頭 (請參閱「更換」單元)。
電鬚刀刀頭的旋轉速度比平常緩慢。	過多污垢累積在電鬚刀刀頭中。	請清潔電鬚刀刀頭。請參閱「清潔與維護」單元。
	充電式電池電力不足。	為電池充電。請參閱「充電」單元。
電鬚刀刀頭不穩固。	固定環未妥善固定。	若固定環的四翼已準確嵌入電鬚刀刀頭固定座的凹處，則表示固定環已正確固定。

問題	可能原因	解決方法
電鬚刀 充飽電 後，可 提供的 刮鬚時 間少於 30 分 鐘。	若您的鬚鬚 濃密，電鬚 刀的刮鬚時 間可能少於 30 分鐘。此 外，取決於 您的刮鬚方 式、清潔習 慣和鬚鬚類 型，可使用 時間也可能 會隨著時日 改變。	

PHILIPS

产品 : 飞利浦电动剃须刀
 型号 : RQ350, RQ330
 额定电压 : 220V~
 额定频率 : 50Hz
 额定输入功率: 2W
 生产日期 : 请见产品本体
 产地 : 中国广东珠海



珠海经济特区飞利浦家庭电器有限公司
 中国珠海市三灶镇琴石工业区
 全国顾客服务热线: 4008 800 008

本产品根据国标 GB4706.1-2005, GB4706.9-2008
 制造

请妥善保管本使用说明书

发行日期：20/07/2015