

PHILIPS

NORELCO

Beard and
Moustache
Trimmer



QT4010

Rechargeable
Cordless

Register your product and get support at
www.norelco.com/register

IMPORTANT SAFETY INSTRUCTIONS

When using an electrical appliance, basic safety precautions should always be followed, including the following:

Read all instructions before using this appliance.

DANGER

To reduce the risk of electric shock:

1. Do not reach for a Trimmer that has fallen into water. Unplug immediately.
2. Do not use while bathing or in a shower.
3. Do not place or store Trimmer where it can fall or be pulled into a tub or sink. Do not place in or drop into water or other liquid.
4. Always unplug this Trimmer from the electrical outlet immediately after (re)charging.
5. Unplug and remove power supply cord from Trimmer before cleaning.

WARNING

To reduce the risk of burns, fire, electric shock or injury to persons:

1. Close supervision is necessary when this appliance is used by, on, or near children or invalids.
2. Use this Trimmer for its intended household use as described in this manual. Do not use attachments not recommended by Philips Electronics North America Corporation.
3. Never operate this Trimmer if it has a damaged cord or plug, if it is not working properly, if it has been dropped, damaged, or dropped into water. For assistance call 1-800-243-3050.
4. Keep the Trimmer, cord and any attachments away from heated surfaces.
5. Never drop or insert any object into any opening.
6. Do not operate, charge, clean or plug in Trimmer outdoors or where aerosol (spray) products are being used or where oxygen is being administered.
7. Always check comb and trimmers before using the Trimmer. Do not use the Trimmer if comb or trimmer are damaged, as injury may occur.
8. Always attach plug to Trimmer first, then to outlet. To disconnect, turn on/off switch to "OFF" position, then remove plug from outlet.
9. To prevent possible damage to the cord, do not wrap cord around the Trimmer.
10. Never put Trimmer in direct sunlight or store at a temperature above 140°F.
11. This Trimmer is for use on human hair only. Do not use this Trimmer for any other purpose.
12. Always store your Trimmer, attachments and power plug in a moisture-free area. Make sure the cord is disconnected from the Trimmer.
13. Only use the power plug supplied with the appliance.

SAVE THESE INSTRUCTIONS

IMPORTANT: The power plug contains a transformer. Do not cut off the power plug to replace it with another plug as this will cause a hazardous condition.

IMPORTANT: YOUR TRIMMER CONTAINS A NICKEL METAL HYDRIDE RECHARGEABLE BATTERY.

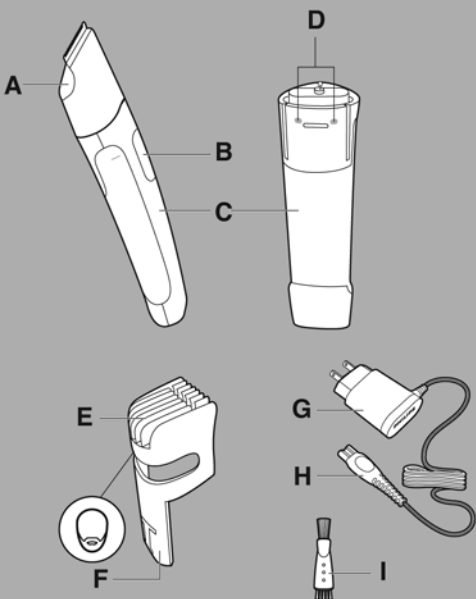
See Battery Removal Instructions.

Registration

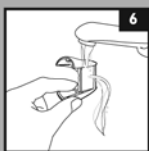
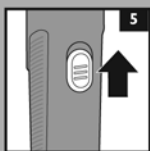
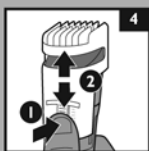
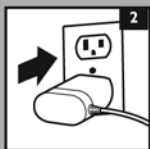
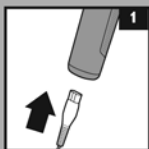
Congratulations on your purchase and welcome to Philips Norelco!

To fully benefit from the support that Philips Norelco offers, register your product at www.norelco.com/register

Features



- A Beard Trimmer Attachment
 - B On/Off Switch
 - C Handle
 - D Hair Length Setting Selector
 - E Beard & Moustache Trimming Comb
 - F Hair Length Setting Indicator
 - G Adapter
 - H Appliance Plug
 - I Cleaning Brush
- Full Two-Year Warranty
45-Day Money-Back Guarantee



Put It To The Test

Like many new products, your Philips Norelco Trimmer may take a little getting used to. If you are using an electric Trimmer for the first time, or if you've been using a different brand, take the time to acquaint yourself with your new Trimmer.

Your Trimmer features head to toe styling with a beard and moustache trimming comb make trimming facial hairs goof proof.

Throw your scissors away and put your new Trimmer to the test. We guarantee precise, professional results or Philips Norelco will refund you the full purchase price as long as the request is received within 45 days of purchase.

To Charge/Recharge

- ▶ Fully charge Trimmer before using for the first time or after non-use for a long period of time.
- ▶ Charging, recharging or using Trimmer at temperatures below 40°F or higher than 95°F adversely affects lifespan of the battery.
- ▶ If the Trimmer is subjected to a major change in temperature, pressure or humidity, let the Trimmer acclimatize for 30 minutes before using.
- ▶ Continuously recharging Trimmer will reduce lifespan of battery.

1 Be certain Trimmer is OFF.

2 Connect appliance plug directly into the Trimmer (fig. 1). Plug adapter into any 120V AC outlet (fig. 2). Use only the cord provided.

▶ It will take approximately 10 hours to fully charge the Trimmer for a cordless trimming time of up to 35 minutes.

3 Disconnect the cord and unplug from electrical outlet.

Optimize the working life of the battery

- ▶ After the Trimmer has been charged for the first time, do not recharge the Trimmer between trimming sessions. Continue using it until the battery is completely empty.
- ▶ Do not charge for more than 24 hours.
- ▶ Do not keep cord permanently plugged in.
- ▶ Discharge/run down the battery completely twice a year by letting the motor run until it stops.
- ▶ If the Trimmer hasn't been used for a long period of time, it must be recharged for a full 10 hours.

Cordless Trimming

- 1** Charge according to directions. Unplug Trimmer from outlet and remove cord.
- 2** Slide ON/OFF switch ON to begin trimming.
- 3** When finished, turn Trimmer OFF.

Trimming your Beard & Moustache with Beard & Moustache Comb

- ▶ Use this Trimmer for its intended household use as described in this manual.
- ▶ Make sure that the Trimmer is fully charged before you start trimming. This Trimmer will not operate while cord is connected to electrical outlet.

Do not move the Trimmer too fast. Make smooth and gentle movements.

- 1** Slide the beard & moustache comb into the guiding grooves on both sides of the handle and push until it 'clicks' into place (fig. 3).

- 2 Press the Hair Length Setting Selector (1) and slide it to the desired setting (2) (fig. 4). See Table 1 for settings.

Table 1. Beard Trimmer

Remaining hair length (mm)	Remaining hair length (in.)
2mm	5/64 in
4mm	5/32 in
6mm	1/4 in
8mm	5/16 in
10mm	13/32 in
12mm	15/32 in
14mm	9/16 in
16mm	41/64 in
18mm	23/32 in

- ▶ If you are trimming for the first time, start by using the comb at the maximum trimming length setting (23/32 in/18mm) to prevent accidentally trimming hairs too short. As you become familiar with the settings, adjust Hair Length Setting Selector to desired trimming length. Selector will “click” into position at each setting.

- 3 Switch the Trimmer ON (fig. 5).

- 4 To trim in the most effective way, move the Trimmer against the direction of hair growth. Make sure the surface of the comb always stays in contact with the skin.

NOTE: Since all hairs do not grow in the same direction, you may want to try different trimming directions (i.e., upwards, downwards, or across). Practice is best for optimum results.

- ▶ If a lot of hair has accumulated in the comb, remove the comb and blow and/or shake the hair out of the comb. You can also use the cleaning brush provided to remove hair from the comb area.
- ▶ **REMEMBER:** You must reset the hair length selector back to your desired setting every time you replace the comb on the appliance.
- ▶ The remaining hair length corresponds with the smallest distance between the cutting blade and the spot where the comb is in contact with the skin.

Beard Trimming Without Beard & Moustache Comb

Remove comb if you are:

- ▶ Defining hair lines
- ▶ Trimming nape of neck
- ▶ Removing single, unwanted hairs

- 1 Be certain the Trimmer is in the OFF position.

- 2 Remove the comb by pressing the Hair Length Setting Selector (1) and slide the comb upwards (2). Pull comb off Trimmer.

- 3 Switch the Trimmer ON.

- 4 Make well-controlled movements. Touch the hair/skin lightly with the Trimmer.

Cleaning

- ▶ Clean the Trimmer after each use.
- ▶ Do not use water or a moist cloth to clean the Trimmer.
- ▶ Always switch Trimmer OFF, unplug and remove power supply cord from Trimmer before cleaning.
- ▶ Do not use compressed air, abrasive cleaning agents, scourers or liquids such as alcohol, benzene, bleach or acetone to clean the Trimmer and attachments.
- ▶ Never clean, replace or remove Trimmer attachments with motor ON.
- ▶ Do not apply pressure to cutters.
- ▶ Do not touch cutters with hard objects as this may damage them.
- ▶ Do not use while bathing, showering or immerse Trimmer in water or other liquids as damage to Trimmer may occur.

During Use:

- ▶ If cut hairs have accumulated in the comb area, remove hairs by shaking, blowing or using cleaning brush provided. Remember to adjust the trimming length back to your selected setting when you replace the comb on Trimmer.

After Each Use:

- 1** Make sure the Trimmer is switched OFF and disconnected from the electrical outlet.
- 2** Remove the comb from Trimmer.
- 3** Blow and/or shake out any hair that may have accumulated in the comb.
- 4** Clean the comb and appliance with the supplied cleaning brush or a dry, soft cloth.
- 5** Remove beard trimmer attachment from Trimmer handle.
- 6** Rinse beard trimmer attachment only thoroughly under warm tap water (fig. 6).
Never rinse beard trimmer attachment still attached to Trimmer handle.
- 7** Shake excess water from attachment and allow to air dry thoroughly (fig. 7).
- 8** Place the beard trimmer attachment back on the Trimmer.

This Trimmer has no other user-serviceable parts.
For assistance call 1-800-243-3050.

Full Two-Year Warranty

Philips Electronics North America Corporation warrants each new Philips Norelco product, Model QT4010 (except cutters and comb) against defects in materials or workmanship for a period of two years from the date of purchase, and agrees to repair or replace any defective product without charge.

IMPORTANT: This warranty does not cover damage resulting from accident, misuse or abuse, lack of reasonable care, the affixing of any attachment not provided with the product or loss of parts or subjecting the product to any but the specified voltage.* Use of unauthorized replacement parts will void this warranty.

PHILIPS ELECTRONICS NORTH AMERICA CORPORATION WILL NOT PAY FOR WARRANTY SERVICE PERFORMED BY A NON-AUTHORIZED REPAIR SERVICE AND WILL NOT REIMBURSE THE CONSUMER FOR DAMAGE RESULTING FROM WARRANTY SERVICE PERFORMED BY A NON-AUTHORIZED REPAIR SERVICE.

NO RESPONSIBILITY IS ASSUMED FOR ANY SPECIAL, INCIDENTAL OR CONSEQUENTIAL DAMAGES.

In order to obtain warranty service, simply go to www.philips.com/norelco or call 1-800-243-3050 for assistance. It is suggested that for your protection you return shipments of product by insured mail, insurance prepaid. Damage occurring during shipment is not covered by this warranty. **NOTE:** No other warranty, written or oral, is authorized by Philips Electronics North America Corporation. This warranty gives you specific legal rights, and you may also have other rights which vary from state to state. Some states do not allow the exclusion or limitation of incidental or consequential damages, so the above exclusion and limitations may not apply to you.

*Read enclosed instructions carefully.

Manufactured for:

Philips Consumer Lifestyle

A Division of Philips Electronics North America Corporation

P.O. Box 10313, Stamford, CT 06904



This symbol on the product's nameplate means it is listed by Underwriters' Laboratories, Inc.

Norelco is a Registered Trademark of Philips Electronics North America Corporation.

PHILIPS is a Registered Trademark of Koninklijke Philips Electronics N.V.

© 2012 Philips Electronics North America Corporation. All Rights Reserved.

PHILIPS

NORELCO

45-DAY MONEY-BACK GUARANTEE

If you are not fully satisfied with your Philips Norelco Trimmer, send the product back along with dated sales receipt and we'll refund you the full purchase price.

The Trimmer must be shipped prepaid by insured mail, insurance prepaid, and have the original sales receipt, indicating purchase price and the date of purchase, enclosed. We cannot be responsible for lost mail. The Trimmer must be postmarked no later than 45 days after the date of purchase. Philips Norelco reserves the right to verify the purchase price of the product and limit refunds not to exceed suggested retail price.

To obtain money-back guarantee return authorization form, call 1-800-243-3050. Please allow 4-6 weeks for delivery of check.