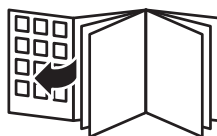


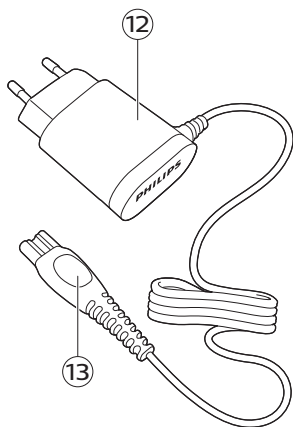
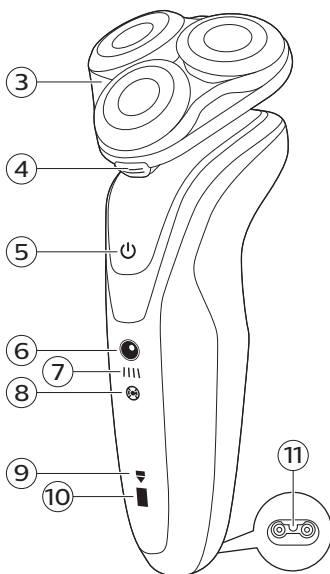
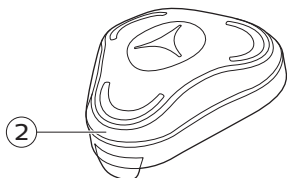
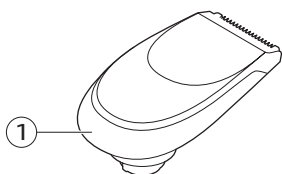
**PHILIPS**

SW5700



© & ™ Lucasfilm Ltd.  
© Disney







**English 6**

简体中文 **26**

## Introduction

Congratulations on your purchase and welcome to Philips! To fully benefit from the support that Philips offers, register your product at **[www.philips.com/welcome](http://www.philips.com/welcome)**.

Please read this user manual, as it contains information about the features of this shaver as well as some tips to make shaving easier and more enjoyable.

## General description (Fig. 1)

- 1 Click-on precision trimmer attachment
- 2 Protection cap
- 3 Shaving unit with hair chamber
- 4 Shaving unit release button
- 5 On/off button
- 6 Replacement reminder
- 7 Cleaning reminder
- 8 Travel lock symbol
- 9 Unplug for use symbol
- 10 Battery charge indicator
- 11 Socket for small plug
- 12 Supply unit
- 13 Small plug

## Important safety information

Read this important information carefully before you use the appliance and its accessories and save it for future reference. The accessories supplied may vary for different products.

## Danger



- Keep the supply unit dry.

## Warning

- To charge the battery, only use the detachable supply unit (HQ8505) provided with the appliance.
- The supply unit contains a transformer. Do not cut off the supply unit to replace it with another plug, as this causes a hazardous situation.
- This appliance can be used by children aged from 8 years and above and persons with reduced physical, sensory or mental capabilities or lack of experience and knowledge if they have been given supervision or instruction concerning use of the appliance in a safe way and understand the hazards involved. Children shall not play with the appliance. Cleaning and user maintenance shall not be made by children without supervision.
- Always unplug the shaver before you clean it under the tap.
- Always check the appliance before you use it. Do not use the appliance if it is damaged, as this may cause injury. Always replace a damaged part with one of the original type.
- Do not open the appliance to replace the rechargeable battery.

## Caution



- Never immerse the cleaning system or the charging stand in water and do not rinse it under the tap.
- Never use water hotter than 60°C to rinse the shaver.
- Only use this appliance for its intended purpose as shown in the user manual.
- For hygienic reasons, the appliance should only be used by one person.
- Never use compressed air, scouring pads, abrasive cleaning agents or aggressive liquids such as petrol or acetone to clean the appliance.
- If your shaver comes with a cleaning system, always use the original Philips cleaning fluid (cartridge or bottle, depending on the type of cleaning system).
- Always place the cleaning system on a stable, level and horizontal surface to prevent leakage.
- If your cleaning system uses a cleaning cartridge, always make sure the cartridge compartment is closed before you use the cleaning system to clean or charge the shaver.
- When the cleaning system is ready for use, do not move it to prevent leakage of cleaning fluid.
- Water may drip from the socket at the bottom of the shaver when you rinse it. This is normal and not dangerous because all electronics are enclosed in a sealed power unit inside the shaver.
- Do not use the supply unit in or near wall sockets that contain an electric air freshener to prevent irreparable damage to the supply unit.



## Electromagnetic fields (EMF)

- This Philips appliance complies with all applicable standards and regulations regarding exposure to electromagnetic fields.

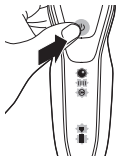
## General



- This shaver is waterproof. It is suitable for use in the bath or shower and for cleaning under the tap. For safety reasons, the shaver can therefore only be used without cord.
- The supply unit is suitable for mains voltages ranging from 100 to 240 volts.
- The supply unit transforms 100-240 volts to a safe low voltage of less than 24 volts.

## The display

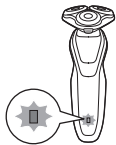
### Start up sequence



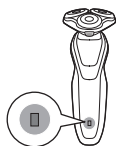
When you press the on/off button for the very first time, all display indications light up in sequence. Charge the shaver before use.

## Charging

**Quick charge:** When the battery is empty and you connect the shaver to a wall socket, the light of the battery charge indicator flashes blue. When the battery contains enough energy for one shave, the battery charge indicator starts flashing blue slowly. While the shaver continues to charge, the battery charge indicator flashes blue.



## Battery fully charged



**Note:** This shaver can only be used without a cord.

When the battery is fully charged, the light of the battery charge indicator lights up blue continuously.

**Note:** When you press the on/off button during or after charging, the 'unplug for use' symbol lights up to indicate that the shaver is still connected to the wall socket.

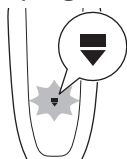
**Note:** When the battery is full, the display switches off automatically after 30 minutes.

## Battery low



When the battery is almost empty, the battery charge indicator flashes orange.

## 'Unplug for use' reminder



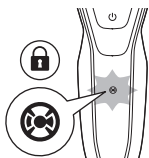
The 'unplug for use' symbol flashes to remind you that you have to disconnect the shaver from the wall socket before you can switch it on.

## Cleaning reminder



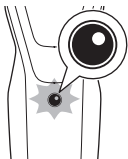
Clean the shaver after every shave for optimal performance (see 'Cleaning and maintenance'). When you switch off the shaver, the cleaning reminder flashes to remind you to clean the shaver.

## Travel lock



You can lock the shaver when you are going to travel. The travel lock prevents the shaver from being switched on by accident (see 'Activating the travel lock').

## Replacing shaving heads



For maximum shaving performance, replace the shaving heads every two years. The shaver is equipped with a replacement reminder which reminds you to replace the shaving heads. The replacement reminder flashes to indicate that you have to replace the shaving heads (see 'Replacing the shaving heads').

**Note:** After replacing the shaving heads, you need to reset the replacement reminder by pressing the on/off button for 7 seconds.

## Charging

Charge the shaver before you use it for the first time and when the display indicates that the battery is almost empty.

Charging takes approx. 1 hour. A fully charged shaver has a shaving time of up to 50 minutes.

**Note:** You cannot use the shaver while it is charging.

## Charging with the supply unit

- 1 Make sure the shaver is switched off.

## 12 English



- 2 Put the small plug in the shaver and put the supply unit in the wall socket.

The display of the shaver indicates that the shaver is charging.

- 3 After charging, remove the supply unit from the wall socket and pull the small plug out of the shaver.

## Using the shaver

**Always check the shaver and all accessories before using. Do not use the shaver or any accessory if it is damaged, as this may cause injury. Always replace a damaged part with one of the original type.**

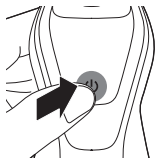


This symbol indicates that the shaver can be used in the bath or shower.

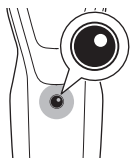
- Use this shaver for its intended household use as described in this manual.
- For hygienic reasons, the shaver should only be used by one person.
- Trimming is easier when the skin and hair are dry.

**Note:** This shaver can only be used without a cord.

## Switching the shaver on and off



- 1 To switch the shaver on or off, press the on/off button once.



Then the replacement symbol lights up continuously when the shaver is switched on.

## Shaving

### Skin adaptation period

Your first shaves may not bring you the result you expect and your skin may even become slightly irritated. This is normal. Your skin and beard need time to adapt to any new shaving system. To allow your skin to adapt to this new appliance, we advise you to shave regularly (at least 3 times a week) and exclusively with this appliance for a period of 3 weeks.

For the best results on skin comfort, pre-trim your beard if you have not shaved for 3 days or longer.

### Dry shaving

- 1 Switch the shaver on.
- 2 Move the shaving heads over your skin in circular movements to catch all hairs growing in different directions. Exert gentle pressure for a close, comfortable shave.



**Note:** Do not press too hard, this can cause skin irritation.

- 3 Switch off and clean the shaver after each use.

### Wet shaving

For a more comfortable shave, you can also use this shaver on a wet face with shaving foam or shaving gel.

## 14 English



- 1 Apply some water to your skin.



- 2 Apply shaving foam or shaving gel to your skin.



- 3 Rinse the shaving unit under the tap to ensure that the shaving unit glides smoothly over your skin.

- 4 Switch the shaver on.



- 5 Move the shaving heads over your skin in circular movements to catch all hairs growing in different directions. Exert gentle pressure for a close, comfortable shave.

Note: Do not press too hard, this can cause skin irritation.

Note: Rinse the shaving unit regularly to ensure that it continues to glide smoothly over your skin.

- 6 Dry your face.

- 7 Switch off the shaver and clean it after each use.

Note: Make sure that you rinse all foam or shaving gel off the shaver.

## Using the click-on attachments

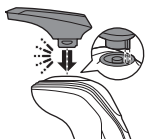
### Removing or attaching the click-on attachment

- 1 Make sure the shaver is switched off.
- 2 Pull the attachment straight off the shaver.

Note: Do not twist the attachment while you pull it off the shaver.



- 3 Insert the lug of the attachment into the slot in the top of the shaver. Then press down the attachment to attach it to the shaver ('click').



### Using the precision trimmer attachment

You can use the precision trimmer to groom your beard, sideburns and moustache.

- 1 Attach the trimmer to the shaver ('click').
- 2 Switch on the shaver.



- 3 Hold the trimmer perpendicular to the skin and move it downwards while exerting gentle pressure.
- 4 Switch off and clean the trimmer after use.

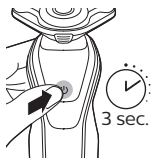


## Travel lock

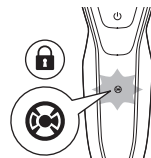
You can lock the shaver when you are going to travel. The travel lock prevents the shaver from being switched on by accident.

### Activating the travel lock

## 16 English



- 1 Press the on/off button for 3 seconds to enter the travel lock mode.



While you activate the travel lock, the indications on the display light up briefly. When the travel lock is activated, the travel lock symbol flashes.

### Deactivating the travel lock

- 1 Press the on/off button for 3 seconds.



While you deactivate the travel lock, the indications on the display light up briefly. When the travel lock is deactivated, the travel lock symbol flashes and goes out. The shaver switches on and is now ready for use again.

**Note:** The shaver unlocks automatically when it is connected to wall socket.

## Cleaning and maintenance

- Regular cleaning guarantees better shaving results.
- Never clean, remove or replace the shaving unit while the shaver is switched on.
- Do not apply pressure to shaving head combs.
- Do not touch shaving heads with hard objects as this may dent or damage the precision-made slotted combs.
- Do not use abrasives, scourers or aggressive liquids such as gasoline or acetone to clean the shaver.

### Cleaning the shaver under the tap

Clean the shaver after every shave for optimal performance (see 'Cleaning and maintenance').



**Always check if the water is too hot, to prevent burning your hands.**

**Never dry the shaving unit with a towel or tissue, as this may damage the shaving heads.**

**While rinsing the shaving unit, water may drip out of the base of the shaver. This is a normal occurrence.**

- 1 Switch on the shaver.
- 2 Rinse the shaving unit under a warm tap.



- 3 Switch off the shaver. Press the release button to open the shaving unit.



- 4 Rinse the hair chamber under the tap.



- 5 Rinse the shaving head holder under a warm tap.
- 6 Carefully shake off excess water and let the shaving head holder air dry completely.



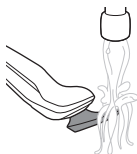


- 7 Close the shaving head holder ('click').

## Cleaning the precision trimmer attachment

**Never dry the trimmer with a towel or tissue, as this may damage the trimming teeth.**

Clean the trimmer after each use.



- 1 Switch the shaver on.
- 2 Rinse the trimmer under a warm tap.
- 3 After cleaning, switch off the shaver.
- 4 Carefully shake off excess water and let the attachment air dry completely.

Tip: For optimal performance, lubricate the teeth of the attachment with a drop of sewing machine oil regularly.

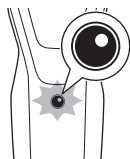
## Replacement

### Replacing the shaving heads



For maximum shaving performance, we advise you to replace the shaving heads every two years. Replace damaged shaving heads immediately. Always replace the shaving heads with original Philips shaving heads (see 'Ordering accessories').

Replacement reminder



The replacement reminder indicates that the shaving heads need to be replaced. The shaving unit symbol flashes when you switch the shaver off.

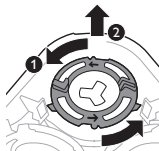
- 1 Switch the shaver off.



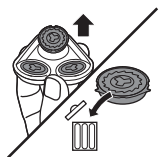
- 2** Press the release button to open the shaving unit.



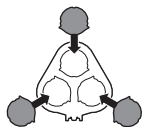
- 3** Pull the shaving head holder off the bottom part of the shaving unit.



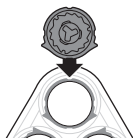
- 4** Turn the retaining rings anticlockwise and remove them. Place them aside in a safe place.



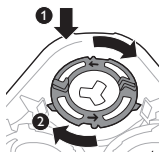
- 5** Remove the shaving heads from the shaving head holder.  
Discard the used shaving heads immediately to avoid mixing them with the new shaving heads.



- 6** Place the new shaving heads in the shaving head holder.

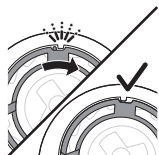


Note: Make sure that the projections of the shaving heads fit exactly into the recesses of the shaving head holder.

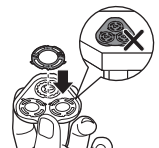


- 7** Place the retaining rings back onto the shaving heads and turn them clockwise to reattach the retaining ring.

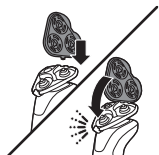
Each retaining ring has two recesses and two projections that fit exactly in the projections and recesses of the shaving head holder.



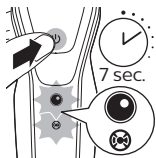
- Turn the ring clockwise until you hear a click to indicate that the ring is fixed.



Note: Hold the shaving head holder in your hand when you reinsert the shaving heads and reattach the retaining rings. Do not place the shaving head holder on a surface, as this may cause damage to the shaving heads.

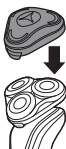


- 8** Reinsert the hinge of the shaving head holder into the slot of the shaving unit. Close the shaving head holder ('click').



- 9 To reset the replacement reminder, press and hold the on/off button for approx. 7 seconds.

## Storage



Put the protection cap on the shaving unit.

**Note:** Always let the shaver dry before storing.

## Ordering accessories

To buy accessories or spare parts, visit **[www.shop.philips.com/service](http://www.shop.philips.com/service)** or go to your Philips dealer. You can also contact the Philips Consumer Care Center in your country (see the international warranty leaflet for contact details).

The following accessories are available:

- SH50 Philips shaving heads
- RQ111 Philips beard styler
- RQ585 Philips cleansing brush
- RQ560, RQ563 Philips cleansing brush heads
- HQ8505 supply unit

**Note:** The availability of the accessories may differ by country.

## Recycling

- Do not throw away the product with the normal household waste at the end of its life, but hand it in at an official collection point for recycling. By doing this, you help to preserve the environment.

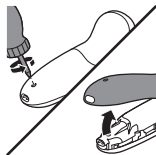
- This product contains a built-in rechargeable battery which shall not be disposed of with normal household waste. We strongly advise you to take your product to an official collection point or a Philips service centre to have a professional remove the rechargeable battery.
- Follow your country's rules for the separate collection of electrical and electronic products and rechargeable batteries. Correct disposal helps prevent negative consequences for the environment and human health.

## Removing the rechargeable appliance battery

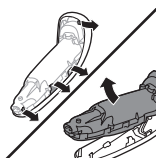
**Only remove the rechargeable battery when you discard the appliance. Before you remove the battery, make sure that the appliance is disconnected from the mains and that the battery is completely empty.**

**Take any necessary safety precautions when you handle tools to open the appliance.**

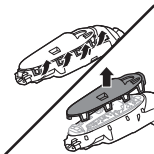
**Be careful, the battery strips are sharp.**



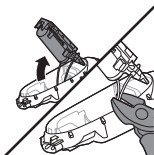
- 1 Remove the screw in the back panel with a screwdriver. Then remove the back panel.



- 2 Bend the hooks aside and remove the power unit.



- 3** Break the snap hooks and remove the front panel of the power unit.



- 4** Take out the battery holder and cut the battery tags with a pair of cutting pliers.

## Warranty and support

If you need information or support, please visit **[www.philips.com/support](http://www.philips.com/support)** or read the international warranty leaflet.

## Warranty restrictions

The shaving heads (cutters and guards) are not covered by the terms of the international warranty because they are subject to wear.

## Troubleshooting

### Shaver

Problem	Possible cause	Solution
The appliance does not work when I press the on/off button.	The appliance is still attached to the wall socket. For safety reasons, the appliance can only be used without cord.	Unplug the appliance and press the on/off button to switch on the appliance.
	The rechargeable battery is empty.	Recharge the battery.

## 24 English

Problem	Possible cause	Solution
	The travel lock is activated.	Press the on/off button for 3 seconds to deactivate the travel lock.
	The shaving unit is soiled or damaged to such an extent that the motor cannot run.	Clean the shaving heads thoroughly or replace them. Also see 'Hairs or dirt obstruct the shaving heads' for a detailed description of how to clean the shaving heads thoroughly.
The appliance does not shave as well as it used to.	The shaving heads are damaged or worn.	Replace the shaving heads.
	Hairs or dirt obstruct the shaving heads.	Clean the shaving heads in the regular way or clean them thoroughly.
		To clean the shaving heads thoroughly, remove the shaving heads from the shaving head holder one by one (see 'Replacement'). Then separate the cutter from its guard and rinse each matching set under the tap. After rinsing, place the cutter back into its corresponding guard. Finally, put the shaving heads back into the shaving head holder (see 'Replacement').
I replaced the shaving heads, but the replacement reminder is still showing.	You have not reset the replacement reminder.	To reset the replacement reminder, press and hold the on/off button for approx. 7 seconds.



Problem	Possible cause	Solution
Water is leaking from the bottom of the appliance.	During cleaning, water may collect between the inner body and the outer shell of the appliance.	This is normal and not dangerous because all electronics are enclosed in a sealed power unit inside the appliance.

## 介绍

感谢您的惠顾，欢迎光临飞利浦！为了让您能充分享受飞利浦提供的支持，请在 [www.philips.com/welcome](http://www.philips.com/welcome) 上注册您的产品。

请阅读本用户手册，手册包含有关此剃须刀各种功能的信息以及一些使用技巧，让您的剃须体验更轻松更舒适。

## 基本说明（图 1）

- 1 卡入式精确修剪器附件
- 2 保护盖
- 3 剃须刀头部件及胡茬储藏室
- 4 剃须刀头部件释放按钮
- 5 开/关按钮
- 6 更换提示
- 7 清洗提示
- 8 旅行锁符号
- 9 “拔出插头即可使用”符号
- 10 电池充电指示灯
- 11 小插头插口
- 12 电源部件
- 13 小插头

## 重要安全信息

使用本产品及其附件之前，请仔细阅读本重要信息，并妥善保管以供日后参考。随附的附件可能因产品而异。

### 危险



- 保持电源部件干燥。
- 警告符号注释：禁止在打开的水龙头下进行清洗。

## 警告

- 要给电池充电，请仅使用产品随附的可拆卸电源部件 (HQ8505)。
- 电源部件中包含一个变压器。请勿自行更换电源部件的插头，否则将导致严重后果。
- 本产品也可以由 8 岁或以上年龄的儿童以及肢体不健全、感觉或精神上有障碍或缺乏相关经验和知识的人士使用，但前提是有人对他们使用本产品进行监督或指导，以确保他们安全使用，并且让他们明白相关的危害。切勿让儿童玩弄本产品。不要让儿童在无人监督的情况下对本产品进行清洁和保养。
- 将剃须刀手持部分与电源软线分开后，才能在水龙头下清洗手持部分。
- 使用前，请务必检查产品。请勿使用损坏的产品，否则可能对人体造成伤害。请务必用原装型号更换损坏的部件。
- 切勿拆开本产品更换充电电池。

## 警告



- 切勿将清洁系统或充电座浸入水中，也不要在水龙头下冲洗。
- 警告符号注释：禁止在打开的水龙头下进行清洗
- 切勿使用温度高于 60°C 的热水冲洗剃须刀。
- 只能将本产品用于用户手册中所示的原定用途。
- 出于卫生的目的，本产品只能供一个人使用。
- 切勿使用压缩气体、钢丝绒、研磨性清洁剂或腐蚀性液体（例如汽油或丙酮）来清洁产品。
- 如果剃须刀随附清洁系统，应始终使用原装飞利浦清洁液（滤芯或瓶，取决于清洁系统类型）。
- 清洁系统必须放在稳定、平坦的水平表面上，以防漏液。
- 如果清洁系统采用清洁滤芯，在使用清洁系统进行清洁或为剃须刀充电之前，应始终确保滤芯仓已关闭。
- 清洁系统准备就绪时，切勿移动，以免清洁液漏出。

- 冲洗剃须刀时，水可能从产品底部的插口漏出。这是正常的，而且没有危险，因为所有电子元件都封闭在剃须刀内部的密封电源部件中。
- 请勿在包含电动空气清新器的墙壁插座上或其周围使用电源部件，以免电源部件受到不可修复的损坏。

## 电磁场 (EMF)

- 本 Philips 产品符合所有有关暴露于电磁场的适用标准和法规。

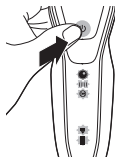
## 概述



- 符号注释：适合于在洗澡或淋浴时使用。允许在盛水的浴缸、淋浴、洗脸盆或其他器皿附近使用本器具。
- 该剃须刀具有防水性能。适合在沐浴或淋浴时使用，也可以放在水龙头下清洗。出于安全原因，该剃须刀在使用时不能连接电线。
- 电源部件适合在 100 - 240 伏的电源电压下工作。
- 该电源部件可将 100-240 伏的电压转换为 24 伏以下的安全低电压。

## 显示屏

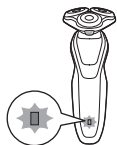
### 启动顺序



当您第一次按下开/关按钮时，所有指示灯依次亮起。  
使用前先为剃须刀充电。

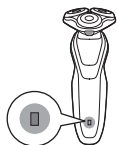
## 充电

**快速充电：** 电池电量耗尽后，当您 will 本剃须刀连接到电源插座时，电池充电指示灯会呈蓝色闪烁。当电池包含的电量足够完成一次剃须时，电池充电指示灯开始呈蓝色缓慢闪烁。



如果本剃须刀继续充电，电池充电指示灯会呈蓝色闪烁。

## 电池已完全充满



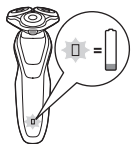
注意：本剃须刀只能在不接电源的情况下使用。

电池充满电后，电池充电指示灯将呈蓝色持续亮起。

注意：如果在充电期间或之后按下开/关按钮，“拔出插头即可使用”符号会亮起，表示剃须刀仍然与电源插座相连。

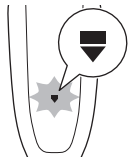
注意：电池充满电后，显示屏会在 30 分钟后自动关闭。

## 电池电量不足



当电池的电量几乎耗尽时，电池充电指示灯会呈橙色闪烁。

## “拔出插头即可使用”提示



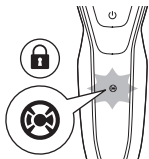
“拔出插头即可使用”符号闪烁，提醒您应先断开剃须刀与电源插座的连接再打开本产品。

## 清洗提示



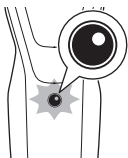
每次剃须后请清洁剃须刀，以获得出色性能 (请参见 '清洁和保养')。关闭剃须刀时，清洗提示符号闪烁，提醒您需要清洁剃须刀。

## 旅行锁



您可以在携带剃须刀旅行之前将其锁住。旅行锁可防止剃须刀被意外 (请参见 '启用旅行锁') 打开。

## 更换剃须刀头



要获得最佳的剃须效果，请每两年更换一次剃须刀头。剃须刀配有更换提示符号，它会提醒您更换剃须刀头。更换提示符号闪烁即表示您应更换剃须刀头 (请参见 '更换剃须刀头')。

**注意：**更换剃须刀头后，您需要通过按开/关按钮 7 秒来重置更换提醒。

## 充电

首次使用剃须刀之前，或当显示屏指示电池电量几乎耗尽时，请先为剃须刀充电。

充电约需 1 小时。充满电的剃须刀最长剃须时间 可达 50 分钟。

**注意：**切勿在充电时使用剃须刀。

## 使用电源部件充电

- 1 确保剃须刀已关闭。



- 2 将小插头插入剃须刀，然后将电源部件插入电源插座。

剃须刀显示屏将显示剃须刀正在充电。

- 3 充电之后，从电源插座上拔下电源部件，并从剃须刀上拔下小插头。

## 使用剃须刀

**使用前务必要检查剃须刀和所有配件。如果剃须刀或任何配件损坏，请勿再使用，否则可能对人体造成伤害。请务必用原装型号更换损坏的部件。**

此标志表示该剃须刀可在沐浴或淋浴时使用。



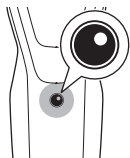
- 请按照本用户手册中所述的预期家用用途使用本剃须刀。
- 出于卫生考虑，请勿共用剃须刀。
- 皮肤和毛发干燥时修剪更容易。

**注意：** 本剃须刀只能在不接电源的情况下使用。

## 打开或关闭剃须刀



- 1 要打开或关闭剃须刀，请按一下开/关按钮。



打开剃须刀后，更换符号会持续亮起。

## 剃须

### 皮肤适应期

前几次剃须可能不会带给您预期效果，并且您的皮肤可能会受到轻度刺激。这是正常的。您的皮肤和胡须需

要时间适应任何新的剃须系统。为了让您的皮肤适应这款新产品，我们建议您在 3 周时间内定期（至少每周 3 次）仅使用本产品剃须。

如果您连续 3 天或更长时间没有剃须，为确保皮肤获得最佳舒适感，请预先修剪胡须。

### 干剃



- 1 打开剃须刀。
- 2 让剃须刀头在您的皮肤上作直线和迂回运动，以刮剃向不同方向生长的所有胡须。轻轻按压，以获取舒适贴面的剃须感受。

注意：不要用力按压剃须刀，这样做可能会导致皮肤受刺激。

- 3 每次使用后，请关闭并清洗剃须刀。

### 湿剃

要获得更舒适的剃须体验，您也可以先用剃须泡沫或剃须啫喱对脸部进行湿润，然后再使用剃须刀。



- 1 用水润湿皮肤。



- 2 在皮肤上涂抹剃须泡沫或剃须啫喱。



- 3 在水龙头下冲洗一下剃须刀头部件，确保剃须刀头部件可以在您的皮肤上顺畅滑动。
- 4 打开剃须刀。





- 5 让剃须刀头在您的皮肤上作迂回运动，以刮剃向不同方向生长的所有须发。轻轻按压，以获取舒适贴面的剃须感受。

注意：不要用力按压剃须刀，这样做可能会导致皮肤受刺激。

注意：定期冲洗剃须刀头部件，确保其能够继续在您的皮肤上顺畅滑动。

- 6 擦干面部。
- 7 每次使用后，请关闭并清洗剃须刀。

注意：确保冲净剃须刀上的所有泡沫或剃须啫喱。

## 使用卡入式附件

### 拆卸或安装卡入式附件

- 1 确保剃须刀已关闭。
- 2 将附件竖直抽出剃须刀。

注意：将附件从剃须刀上抽出时，不要旋转。

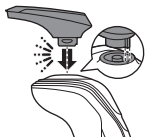


- 3 将附件的凸缘插入本剃须刀顶部的槽内。然后，按下附件将其安装到本剃须刀上（可听到“咔哒”一声）。

### 使用精确修剪器附件

您可以使用精确修剪器修剪胡须、鬓角和须髥。

- 1 将修剪器安装到剃须刀上（听到“咔哒”一声）。
- 2 打开剃须刀。





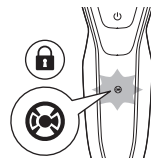
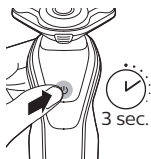
- 3 将修剪器垂直放在皮肤上，向下移动产品，同时轻轻按压。
- 4 使用后，请关闭并清洁修剪器。

## 旅行锁

您可以在携带剃须刀旅行之前将其锁住。旅行锁可防止剃须刀被意外打开。

### 启用旅行锁

- 1 按住开/关按钮 3 秒钟以进入旅行锁模式。



当您启用旅行锁时，显示屏上的指示灯会短暂亮起。旅行锁启用后，旅行锁符号将闪烁。

### 解除旅行锁

- 1 按开/关按钮 3 秒钟。



当您解除旅行锁时，显示屏上的指示灯会短暂亮起。旅行锁解除后，旅行锁符号将闪烁，然后熄灭。剃须刀打开后即可供再次使用。

**注意：** 当连接到电源插座时，剃须刀会自动解锁。

## 清洁和保养

- 为保证更好的剃须效果，请定期清洗剃须刀。
- 切勿在剃须刀开启时清洗、拆除或更换剃须刀头部件。
- 请勿对剃须刀头梳齿施加压力。

- 请勿使用硬物触碰剃须刀头，以免挫伤或损坏制作精密的带槽梳齿。
- 切勿使用研磨剂、硬毛刷或汽油或丙酮等腐蚀性液体清洗本剃须刀。

## 在水龙头下冲洗剃须刀

每次剃须后请清洁剃须刀，以获得出色性能 (请参见‘清洁和保养’)。

**切记先检查水温是否太高，以防烫手。**

**不要用毛巾或纸巾擦拭剃须刀头部件，否则可能会损坏剃须刀头。**

**冲洗剃须刀头部件时，水可能会从剃须刀底座中滴出。这属于正常现象。**

- 1 打开剃须刀。
- 2 用温水冲洗剃须刀头部件。



- 3 关闭剃须刀。按下释放按钮，打开剃须刀头部件。



- 4 在水龙头下冲洗胡茬储藏室。





- 5 用温水冲洗剃须刀头支架。
- 6 小心地甩掉多余水分并彻底晾干剃须刀头支架。



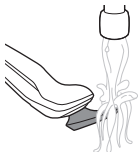
- 7 合上剃须刀头支架（可听到“咔哒”一声）。

## 清洁精确修剪器附件

**切勿用毛巾或纸巾擦干修剪器，否则可能会损坏修剪齿。**

每次使用后都应清洁修剪器。

- 1 打开剃须刀。
- 2 在热水龙头下冲洗修剪器。
- 3 清洁完成后，关闭剃须刀。
- 4 小心地甩掉多余水分并彻底晾干附件。



**提示：** 为达到最佳效果，请定期用一滴缝纫机油润滑附件齿部。

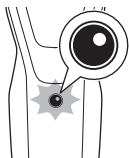
## 更换

### 更换剃须刀头



为获得最佳剃须效果，建议每两年更换一次剃须刀头。立即更换损坏的剃须刀头。务必使用原装飞利浦剃须刀头（请参见‘订购配件’）进行更换。

更换提示



更换提示符号表示需要更换剃须刀头。关闭剃须刀时，剃须刀头部件符号会闪烁。

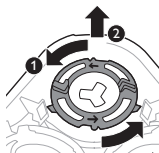
1 关闭剃须刀。



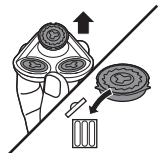
2 按下释放按钮，打开剃须刀头部件。



3 将剃须刀头支架从剃须刀头部件的底部抽离。

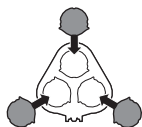


4 逆时针旋转固定环并将其取下。将其存放在安全的地方。

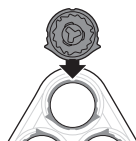


5 从剃须刀头支架上卸下剃须刀头。

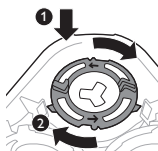
立即丢弃用过的剃须刀头，以免与新的剃须刀头混淆。



6 将新的剃须刀头装到剃须刀头支架中。

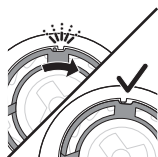


注意：确保剃须刀头的凸缘正好装入剃须刀头支架的凹槽。

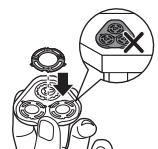


7 将固定环放回剃须刀头上，然后顺时针旋转以重新安装固定环。

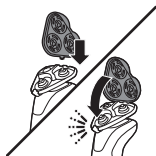
各固定环均具有两个凹槽和两个凸缘，正好装入剃须刀头支架的凸缘和凹槽内。



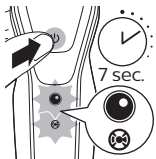
- 顺时针旋转固定环，直至听到“咔哒”一声，表明固定环已就位。



注意：当您重新插入剃须刀头并重新安装固定环时，请将剃须刀头支架握在手中。切勿将剃须刀头支架放在平面上，否则可能会损坏剃须刀头。

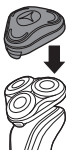


- 8 将剃须刀头支架的铰链重新卡入剃须刀头部件的槽内。合上剃须刀头支架（可听到“咔哒”一声）。



- 9 要重置更换提醒，请按住开/关按钮约 7 秒钟。

## 存放



将保护盖盖在剃毛刀头部件上。

**注意：** 待剃须刀完全晾干后再存放。

## 订购配件

要购买附件或备件，请访问 [www.shop.philips.com/service](http://www.shop.philips.com/service) 或联系您的飞利浦经销商。您还可以联系所在国家/地区的飞利浦客户服务中心（请参阅全球保修卡了解详细联系信息）。

可选配以下附件：

- SH50 飞利浦剃须刀头
- RQ111 飞利浦胡须造型器
- RQ585 飞利浦洁面刷
- RQ560、RQ563 飞利浦洁面刷头
- HQ8505 电源部件

**注意：** 配件可用性可能因国家/地区而异。

## 回收

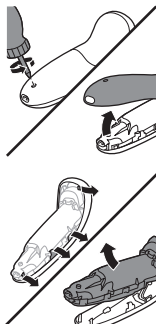
- 弃置本产品时，请不要将其与一般生活垃圾放在一起，应将其交给政府指定的回收中心。这样做将有利于环保。
- 此产品包含内置充电电池；请勿将充电电池与一般生活垃圾一起弃置。强烈建议您将自己的产品送到官方收集点或飞利浦服务中心，让专业人士移除充电电池。
- 遵循您的国家/地区有关分类回收电子电气产品和充电电池的规定。正确弃置产品有助于避免对环境和人类健康造成不良后果。

## 取出可充电的产品电池

仅在丢弃本产品时方可取出充电电池。卸下电池之前，请确保本产品与电源断开连接并且电池电量已耗尽。

当您使用工具打开本产品时，请采取必要的安全保护措施。

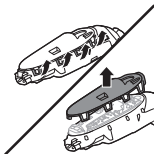
**注意，电池带非常锋利。**



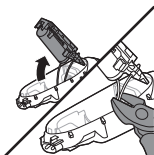
1 使用螺丝刀取出后面板中的螺钉。拆除后面板。

2 将钩子向外掰，取出电源部件。





3 脱开安全钩，取下电源部件的前面板。



4 取出电池舱，用一把钢丝钳剪下电池标签。

部件名称	产品中有害物质的名称及含量					
	有害物质					
	铅 (Pb)	汞 (Hg)	镉 (Cd)	六价铬 (Cr (VI) )	多溴联苯 (PBB)	多溴二苯醚 (PBDE)
PCB's 集成电路板	X	O	O	O	O	O
Electrical contact pins 电接触片	X	O	O	O	O	O
Power plug 电源插头	X	O	O	O	O	O

本表格依据SJ/T 11364的规定编制。

O: 表示该有害物质在该部件所有均质材料中的含量均在GB/T 26572规定的限量要求以下。

X: 表示该有害物质至少在该部件的某一均质材料中的含量超出GB/T 26572规定的限量要求。

- 该表格中所显示的“有害物质”在产品正常使用情况下不会对人身和环境产生任何伤害。
- 该表格中所显示的“有害物质”及其存在的部件向消费者和回收处理从业者提供相关物质的存在信息，有助于产品废弃时的妥善处理。

## 保修和支持

如需信息或支持，请访问 [www.philips.com/support](http://www.philips.com/support) 或阅读国际保修卡。

## 保修条款

由于剃须刀头（刀片和网罩）属于易磨损物品，因此在国际保修条款的涵盖范围之列。

## 故障处理方法

### 剃须刀

问题	可能的原因	解决方法
按下开/关按钮时，产品不工作。	本产品仍然连接着电源插座。出于安全原因，本产品在使用时不能连接电线。	拔掉产品插头并按开/关按钮打开产品。
	充电电池的电量已耗尽。	给电池充电。
	旅行锁已被激活。	按住开/关按钮 3 秒钟以禁用旅行锁。
	剃须刀头部件被污染或损坏，导致马达无法运行。	彻底清洁剃须刀头或将其更换。有关如何彻底清洗剃须刀头的详细说明，另请参阅“毛发或污垢堵塞了剃须刀头”。
产品的剃须效果没有以前好。	剃须刀头已损坏或磨损。	更换剃须刀头。
	毛发或污垢堵塞了剃须刀头。	对剃须刀头进行常规或彻底清洁。
		要彻底清洁剃须刀头，请将剃须刀头从剃须刀头支架上逐一(请参见“更换”)卸下。然后，分离刀片和网罩，并在水龙头下冲洗每个刀片和网罩套装。冲洗后，将刀片放回对应的网罩中。最后，将剃须刀头装回到剃须刀头支架(请参见“更换”)中。
我更换了剃须刀头，但仍然显示更换提醒。	您尚未重置更换提示。	要重置更换提醒，请按住开/关按钮约 7 秒钟。

问题	可能的原因	解决方法
水从产品底部漏出。	在清洁过程中，水可能聚集在产品的机身内部与外壳之间。	这是正常现象，而且没有危险，因为所有电子元件都封闭在产品内部的密封电源部件中。

## 保修与服务

This guarantee card is valid in China.

This guarantee card should be retained by The USER

此保用卡在中国适用，用户请保留此卡。

保修及服务：

此产品是一件设计精良，用高品质元件制造之家用电器，在正常使用及保养下应能发挥其优越性能。在购买日期后二年内，若发生任何因制造工艺或元器件造成之损坏，飞利浦中国维修服务中心将为持证用户提供免费门市维修服务，视情况更换零件或整个产品。

无论在保期中或保期后，只要飞利浦正式行销该产品的任何国家皆可获得维修服务。

若飞利浦在当地无行销该项产品，飞利浦同样提供维修服务，但可能因未储备所需零件，维修时间可能较长，敬请谅解。请联络当地飞利浦经销商，或飞利浦服务部门。

若您需洽询相关资讯，或遇困难事项时，请联络当地飞利浦维修服务中心，或向飞利浦服务热线咨询。

中国顾客服务热线：4008 800 008 (用户需承担本地通话费)。

网址：<http://www.philips.com.cn>

保修条例：

- 在购买日期后二年内，凡经本公司特约维修站人员确认为正常使用情况下，因制造工艺或元器件造成之损坏，您都将获得免费保修服务。

- 此免费服务不包括需时常更换的易耗零配件（吸尘机纸袋，布袋，空气清新机滤网，滤芯，活性碳，咖啡壶过滤网）及附件（如须刀网膜、刀头，咖啡杯，食品加工机杯/刀具等），辅助装置，运输费及维修人员上门服务费。
- 用户请保留此联。
- 维修时请携同此证及发票正本。
- 此证若经涂改即作废。
- 此证须联同发票正本使用方为有效。
- 以下情况将不能获得免费服务

1 使用不当引起的人为损坏，例如接入不当电源、使用不当配件、不适当之安装、不依说明书使用、错误使用或疏忽而造成损坏等。因运输及其他意外而造成之损坏。非经本公司认可之维修和改装。其他因不可抗力（如自然灾害、电压异常等）造成的损坏。

2 一般家庭以外使用（如工业、商业用）而造成的损坏。

3 正常使用引起的产品老化、磨损等，但不影响产品的正常使用。

- 此证仅在中国境内有效。
- 保修证作为在规定期限及条件之内进行免费维修的保证，并不限制消费者的法定权利。

网上会员注册与产品注册：

- 1 登陆 <http://www.philips.com.cn/welcome>
- 2 点击“创建新账户”，创建您的飞利浦账号。
- 3 点击“注册产品”，通过产品名称或产品型号查找产品，完成产品注册

#### Service information

For after-sales and maintenance service, please call service hotline 4008 800 008. Any comments and enquiries during the service, please Contact our Philips Consumer Lifestyle Customer Care Service Office.

Philips(china)Investment Co.,Ltd. Philips  
Consumer Lifestyle Philips Innovation  
Campus Shanghai NO.1 Building,  
NO.10, Lane 888 Tian Lin Road Shanghai,  
P. R. C. 200233

Fax: +86 21 5445 2663

服务须知

如需要此产品的售后服务，请拨打服务热线4008 800 008

如在维修服务过程中有任何意见，

欢迎致函飞利浦优质生活服务办事处解决疑难。

飞利浦（中国）投资有限公司

飞利浦优质生活客户服务部

中国上海市田林路888弄10号

飞利浦创新科技园1号楼

邮政编码：200233 传真：（021）5445 2663

**PHILIPS**

产品：飞利浦电动剃须刀

型号：SW5700

额定电压：220V~

额定频率：50Hz

额定输入功率：9 W

生产日期：请见产品本体

产地：中国广东珠海

珠海经济特区飞利浦家庭电器有限公司

中国珠海市三灶镇琴石工业区

全国顾客服务热线: 4008 800 008

本产品根据国标 GB4706.1-2005,  
GB4706.9-2008制造

保留备用

发行日期: 14/8/2017

— |

| —

— |

| —

— |

| —

— |

| —

— |

| —

— |

| —







© 2017 Koninklijke Philips N.V.

All rights reserved

保留所有权利

4222.002.7379.1 (14/8/2017)

> 75% 循环再造纸



>75% recycled paper

>75% papier recyclé