

PHILIPS

**PHILIPS**

产品 : 飞利浦美发造型器  
型号 : HP8619  
额定电压 : 220V~  
额定频率 : 50Hz  
额定输入功率 : 39 W  
生产日期 : 请见产品本体  
产地 : 中国广东东莞

珠海经济特区飞利浦家庭电器有限公司  
中国珠海市三灶镇琴石工业区  
全国顾客服务热线: 4008 800 008

本产品根据国标GB4706.1-2005,  
GB4706.15-2008, GB4343.1-2009  
及GB17625.1-2012制造

**English**

Congratulations on your purchase, and welcome to Philips!  
To fully benefit from the support that Philips offers, register  
your product at [www.philips.com.cn/welcome](http://www.philips.com.cn/welcome).

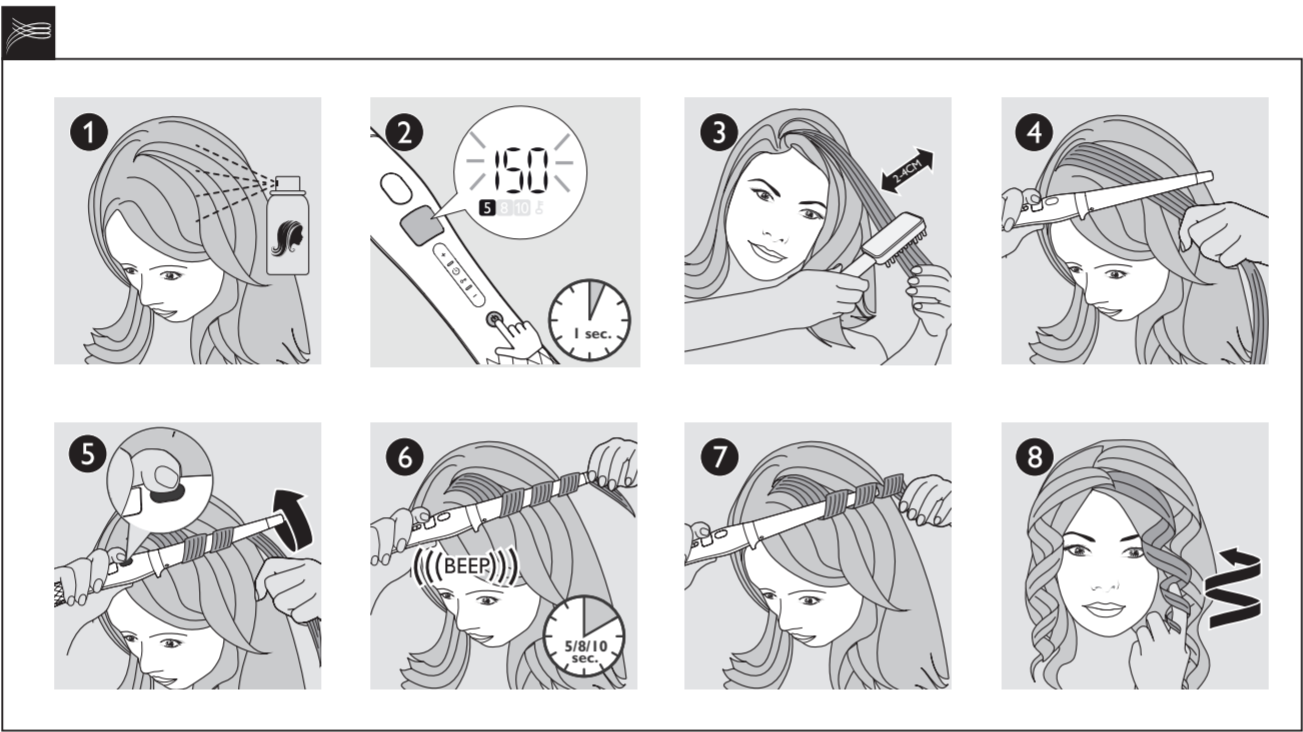
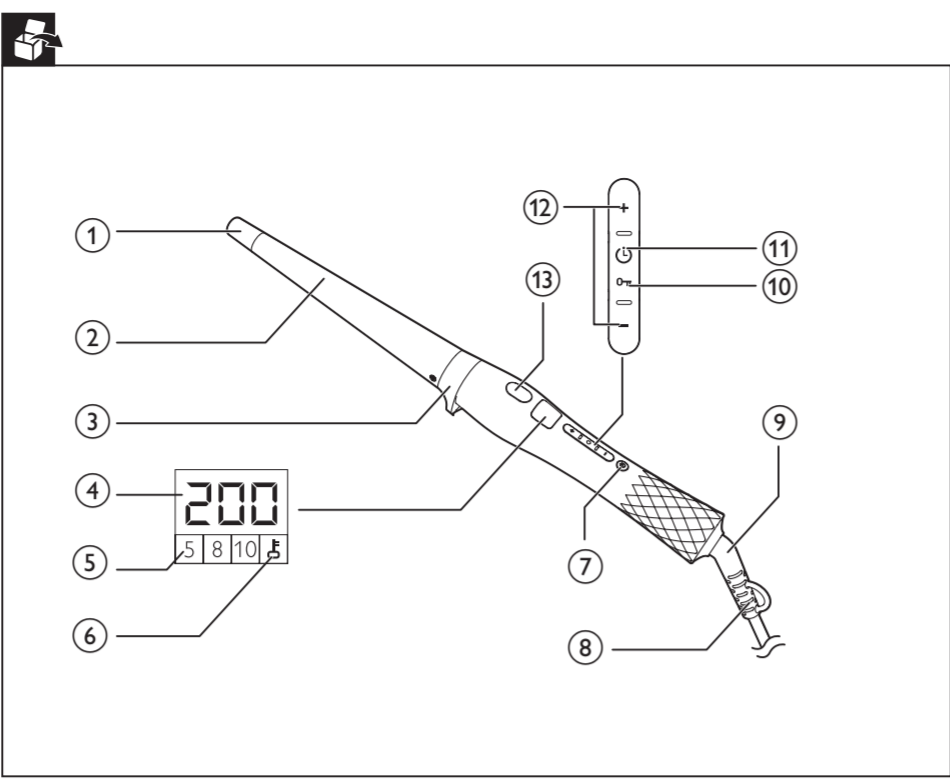
1 Introduction

Hyper sumptuous, soft curls, radiating shine. Voluptuous, chic waves with lots of volume and thickness. The new Philips ProCare curler with Curl Ready Indicator enables you to create variations on the theme of curls with no compromise on hair health. Conical shape barrel with diameter from 13 to 25 mm allows you to create different types of curls and waves. Soft touch coating barrel ensures safe styling without risk of instant burns. We hope you will enjoy using your Philips ProCare Curler.

We would like to invite you to share your experience with us and other shoppers. Please give us your honest opinion writing a review on product page <http://www.philips.com.cn/c/>. It only takes a minute. We look forward to hearing from you.

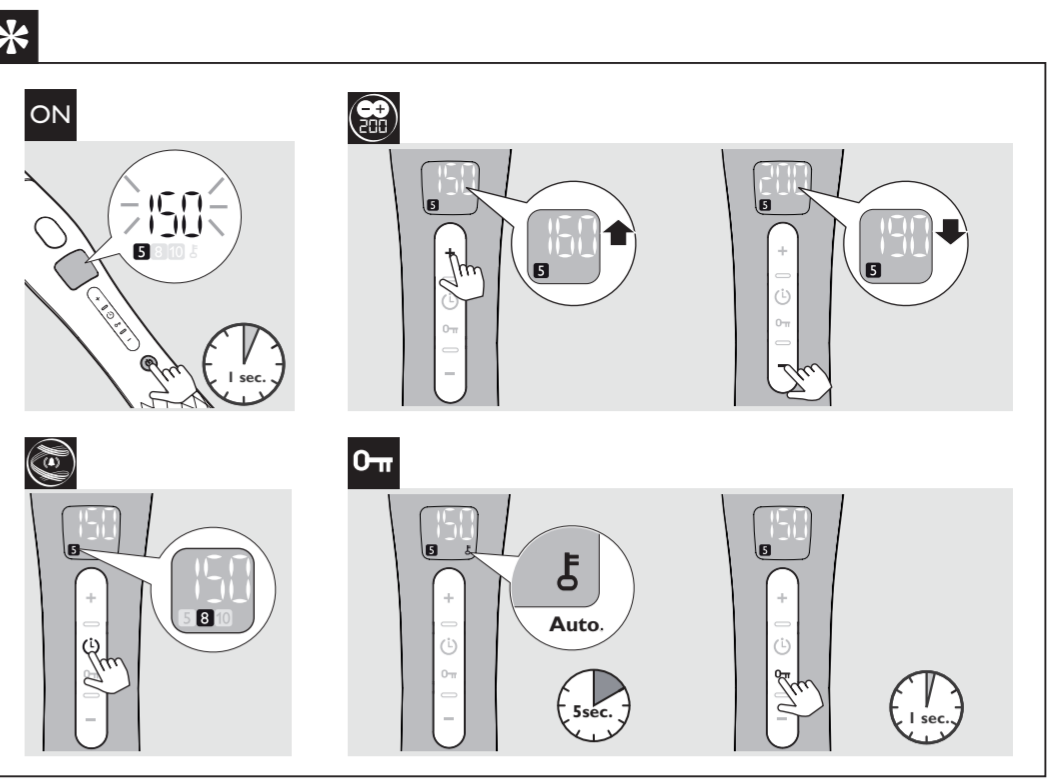
2 Important

- Read this user manual carefully before you use the appliance and keep it for future reference.
- **WARNING:** Do not use this appliance near water.
  - When the appliance is used in a bathroom, unplug it after use since the proximity of water presents a risk, even when the appliance is switched off.
  - **WARNING:** Do not use this appliance near bathtubs, showers, basins or other vessels containing water.
  - Always unplug the appliance after use.
  - If the mains cord is damaged, you must have it replaced by Philips, a service centre authorised by Philips or similarly qualified persons in order to avoid a hazard.
  - This appliance can be used by children aged from 8 years and above and persons with



- reduced physical, sensory or mental capabilities or lack of experience and knowledge if they have been given supervision or instruction concerning use of the appliance in a safe way and understand the hazards involved. Children shall not play with the appliance. Cleaning and user maintenance shall not be made by children without supervision.
- Before you connect the appliance, ensure that the voltage indicated on the appliance corresponds to the local power voltage.
  - Do not use the appliance for any other purpose than described in this manual.
  - When the appliance is connected to the power, never leave it unattended.
  - Never use any accessories or parts from other manufacturers or that Philips does not specifically recommend. If you use such accessories or parts, your guarantee becomes invalid.
  - Do not wind the mains cord round the appliance.
  - Wait until the appliance has cooled down before you store it.
  - Pay full attention when using the appliance since it could be extremely hot. Only hold the handle as other parts are hot and avoid contact with the skin.
  - Always place the appliance with the stand on a heat-resistant,

- stable flat surface. The hot barrel should never touch the surface or other flammable material.
- Avoid the mains cord from coming into contact with the hot parts of the appliance.
  - Keep the appliance away from flammable objects and material when it is switched on.
  - Never cover the appliance with anything (e.g. a towel or clothing) when it is hot.
  - Only use the appliance on dry hair. Do not operate the appliance with wet hands.
  - Keep the barrel clean and free of dust and styling products such as mousse, spray and gel. Never use the appliance in combination with styling products.
  - The barrel has velvet coating. This coating might slowly wear away over time. However, this does not affect the performance of the appliance.
  - If the appliance is used on color-treated hair, the barrel may be stained. Before using it on artificial hair, always consult their distributor.
  - Always return the appliance to a service centre for examination or repair. Repair by unqualified people could result in an extremely hazardous situation for the user.
  - Do not insert metal objects into openings to avoid electric shock.



3 Overview

- ① Cool Tip
  - ② Soft Touch Coating Barrel
  - ③ Resting Stand
  - ④ Display for Temperature Setting
  - ⑤ Display for Time Settings for Curl Ready Indicator: 5, 8, 10 seconds
  - ⑥ Display for Key Lock Icon
  - ⑦ On/Off Button
  - ⑧ Hanging Loop
  - ⑨ 360° Swivel Cord
  - ⑩ Unlock Key Lock Function (press and hold button to unlock)
  - ⑪ Time Switch for Curl Ready Indicator
  - ⑫ Temperature Switches
  - ⑬ Curl Ready Indicator
- With the following features in your ProCare curler, you will have a more convenient curling experience for a healthier hair.
- **Curl Ready Indicator**  
A unique Curl Ready Indicator with choices of 5, 8, 10 seconds lets you know when your curl is ready by giving a "beep" alert - no more hair overtreatment.
  - **Digital Adjustable Temperature Settings**  
Digital heat settings allow you to choose the temperature that suits your hair type, while the top temperature of 200°C guarantees perfect results even for thick hair.
  - **Key Lock Function**  
The Key Lock protects you from any careless operations. After switching on the device, the Key Lock will be automatically activated 15 seconds after you last used the Temperature Switches, the Time Switch for Curl Ready Indicator or the On/Off Button (Thereafter the automatic activation will be after 5 seconds). To unlock the appliance, press the Unlock Key Lock Function (⑩) for 1 second.
  - **Automatic Shut-off**  
An automatic shut-off after 60 minutes offers you extra safety. You can reactivate the curler by pressing the On/Off Button for 1 second.
  - **Soft Touch Coating**  
Soft touch coating prevents instant burns. However, do not touch or hold the barrel over any period of time.

4 Curl your hair

**Warning:** Curling irons are powerful styling tools and must always be used with care.  
Curl your hair:

- 1 Connect the plug to a power supply socket. Before you start curling, spray heat protectant on your dry hair for more protection.
- 2 Press and hold On/Off Button (⑦) for one second to switch on the appliance. Select a Temperature (⑫) and Time Setting (⑪) according to the table below:

Hair type	Recommended temperature ranges	Recommended curling time
Permanently treated (e.g. permed or bleached/color-treated)	160 °C and below	5 or 8 seconds
Fine, medium textured or slightly wavy	170-180 °C	8 or 10 seconds
Coarse, straight, hard-to-curl	190-200 °C	8 or 10 seconds

**Electromagnetic fields (EMF)**

This Philips appliance complies with all applicable standards and regulations regarding exposure to electromagnetic fields.

**Environment**

Do not throw away the appliance with the normal household waste at the end of its life, but hand it in an official collection point for recycling. By doing this, you help to preserve the environment.



