

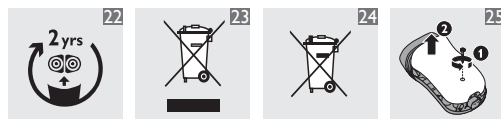
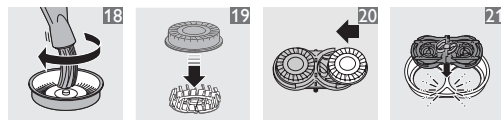
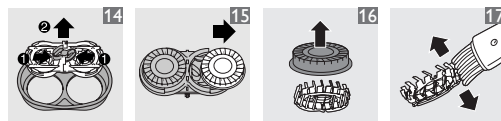
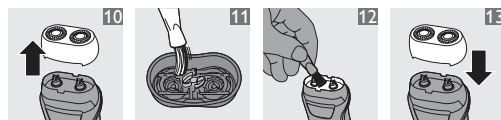
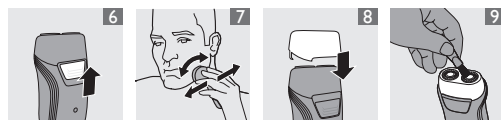
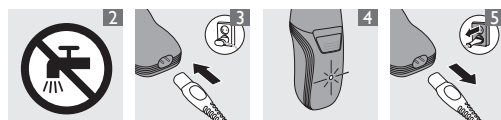
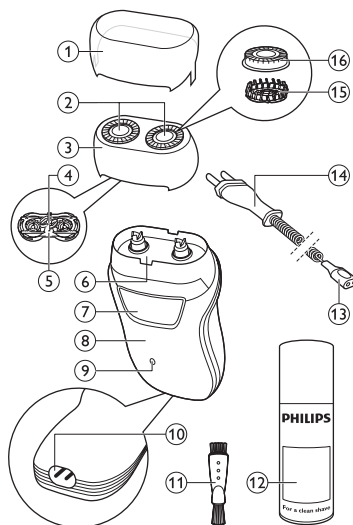


PHILIPS

www.philips.com

100% recycled paper
100% papier recyclé
100% 循环再造纸

4222.002.5272.1



ENGLISH

Introduction

Congratulations on your purchase and welcome to Philips! To fully benefit from the support that Philips offers, register your product at www.philips.com/welcome.

General description (Fig. 1)

- 1 Protection cap
- 2 Shaving heads
- 3 Shaving unit
- 4 Retaining frame
- 5 Central spring of retaining frame
- 6 Hair chamber
- 7 On/off slide
- 8 Front panel
- 9 Charging light
- 10 Socket for small plug
- 11 Cleaning brush
- 12 Philips Cleaning Spray (HQ110) (Optional)
- 13 Small plug
- 14 Mains cord with plug
- 15 Cutter
- 16 Guard

Important

Read this user manual carefully before you use the appliance and save it for future reference.

Danger

- Keep the appliance and the mains cord dry.
- This symbol means: Forbidden to clean under a running tap (Fig. 2).

Warning

- This appliance is not intended for use by persons (including children) with reduced physical, sensory or mental capabilities, or lack of experience and knowledge, unless they have been given supervision or instruction concerning use of the appliance by a person responsible for their safety.
- Children should be supervised to ensure that they do not play with the appliance.
- Do not use the shaver or the mains cord if it is damaged.
- If the mains cord is damaged, always have it replaced with one of the original type in order to avoid a hazard.

Caution

- Use, charge and store the appliance at a temperature between 5°C and 35°C.
- Only use the mains cord supplied to charge the appliance.

- Only use the cleaning brush supplied.
- Make sure the cleaning brush remains clean.

Electromagnetic fields (EMF)

This Philips appliance complies with all standards regarding electromagnetic fields (EMF). If handled properly and according to the instructions in this user manual, the appliance is safe to use based on scientific evidence available today.

Charging

Make sure the shaver is switched off when you start to charge it.

When you charge the shaver for the first time or after a long period of disuse, let it charge continuously for 12 hours. Charging normally takes approx. 8 hours. Charge the appliance when the motor stops or starts running slower.

Do not leave the appliance connected to the mains for more than 24 hours.

1 Put the small plug in the shaver (Fig. 3).

2 Put the plug in the wall socket.

▶ The charging light goes on to indicate that the appliance is charging (Fig. 4).

3 Remove the plug from the wall socket and pull the small plug out of the shaver when the battery is fully charged (Fig. 5).

Note: The shaver does not run from the mains. When the battery is empty, you have to recharge the battery before you can use the shaver again.

Cordless shaving time

A fully charged shaver has a cordless shaving time of approximately 30 minutes.

Using the appliance

The shaver cannot be used directly from the mains.

1 Remove the protection cap.

2 Push the on/off slide upwards to switch on the shaver (Fig. 6).

3 Move the shaving heads over your skin. Make both straight and circular movements (Fig. 7).

Note: Shave on a dry face only. Do not use the shaver in combination with gel, foam or water.

Note: Your skin may need 2 or 3 weeks to get accustomed to the Philips shaving system.

4 Push the on/off slide downwards to switch off the shaver.

5 Clean the shaver after every shave (see chapter 'Cleaning and maintenance').

- 6

Put the protection cap on the shaver to prevent damage and to avoid dirt accumulation in the shaving heads (Fig. 8).
- Cleaning and maintenance

Never use scouring pads, abrasive cleaning agents or aggressive liquids such as petrol or acetone to clean the appliance.

Clean the shaver after every shave to guarantee better shaving performance. For the best cleaning result, we advise you to use Philips Cleaning Spray (HQ110). Ask your Philips dealer for information.

Note: Philips Shaving Head Cleaning Spray (HQ110) may not be available in all countries. Contact the Customer Care Centre in your country about the availability of this accessory.

After every shave: shaving unit and hair chamber

1

Switch off the shaver, remove the plug from the wall socket and pull the small plug out of the shaver.

2

Clean the top of the appliance with the cleaning brush supplied (Fig. 9).

3

Pull the shaving unit straight up off the shaver (Fig. 10).

4

Clean the inside of the shaving unit with the cleaning brush (Fig. 11).

5

Clean the hair chamber with the cleaning brush (Fig. 12).

6

Put the shaving unit back onto the shaver (Fig. 13).

Every two months: shaving heads

Note: Do not use cleaning agents or alcohol to clean the shaving heads. Only use Philips Cleaning Spray (HQ110).

1

Switch off the shaver, remove the plug from the wall socket and pull the small plug out of the shaver.

2

Pull the shaving unit straight up off the shaver (Fig. 10).

3

To remove the retaining frame, push the sides of the central spring towards each other (1). Then lift the retaining frame out of the shaving unit (2) (Fig. 14).

4

Slide the shaving heads out of the retaining frame. Remove and clean one shaving head at a time. Each shaving head consists of a cutter and a guard (Fig. 15).

Note: Do not clean more than one cutter and guard at a time, since they are all matching sets. If you accidentally mix up the cutters and guards, it may take several weeks before optimal shaving performance is restored.

5

Remove the guard from the cutter (Fig. 16).

6

Clean the cutter with the short-bristled side of the cleaning brush. Brush carefully in the direction of the arrows (Fig. 17).

7

Clean the guard with the long-bristled side of the cleaning brush (Fig. 18).

8

Put the cutter back into the guard after cleaning (Fig. 19).

9

Slide the shaving heads back into the retaining frame (Fig. 20).

10

Put the retaining frame back into the shaving unit ('click') (Fig. 21).

11

Put the shaving unit back onto the shaver (Fig. 13).

Storage

Keep the appliance dry.

Use and store the appliance at a temperature between 5°C and 35°C.

1

Switch off the shaver.

2

Put the protection cap on the shaver after use to prevent damage and to avoid dirt accumulation in the shaving heads (Fig. 8).

Replacement

Replace the shaving heads every two years for optimal shaving results.

Replace damaged or worn shaving heads with Philips shaving heads only (HQ4+ for China or HQ56 for the rest of the world).

For instructions on how to remove the shaving heads, see chapter 'Cleaning and maintenance', section 'Every two months: shaving heads'.

Accessories

To retain the top performance of your shaver, make sure you clean it regularly and replace its shaving heads at the recommended time.

Shaving heads

-

We advise you to replace your shaving heads every two years. Always replace them with Philips shaving heads only (HQ4+ for China or HQ56 for the rest of the world) (Fig. 22).

Cleaning

-

Use Philips Cleaning Spray (HQ110) to clean the shaving heads thoroughly.

Environment

-

Do not throw away the appliance with the normal household waste at the end of its life, but hand it in at an official collection point for recycling. By doing this, you help to preserve the environment (Fig. 23).

-

The built-in rechargeable battery contains substances that may pollute the environment. Always remove the battery before you discard and hand in the shaver at an official collection point. Dispose of the battery at an official collection point for batteries. If you have trouble removing the battery, you can also take the shaver to a Philips service centre. The staff of this centre will remove the battery for you and will dispose of it in an environmentally safe way (Fig. 24).

Removing the rechargeable battery

Only remove the rechargeable battery if it is completely empty.

1

Remove the plug from the wall socket and pull the small plug out of the shaver.

2

Let the shaver run until it stops, undo the screw on the back of the shaver (1) and lift the back panel off the shaver (2) (Fig. 25).

3

Remove the rechargeable battery (Fig. 26)

Do not connect the shaver to the mains again after you have removed the battery.

Guarantee and service

If you need service or information or if you have a problem, please visit the Philips website at www.philips.com or contact the Philips Consumer Care Centre in your country. You find its phone number in the worldwide guarantee leaflet. If there is no Consumer Care Centre in your country, go to your local Philips dealer.

Guarantee restrictions

The shaving heads (cutters and guards) are not covered by the terms of the international guarantee because they are subject to wear.

Troubleshooting

This chapter summarises the most common problems you could encounter with the appliance. If you are unable to solve the problem with the information below, contact the Consumer Care Centre in your country.

Problem	Possible cause	Solution
The shaver does not shave as well as it used to.	The shaving heads are dirty. You have not cleaned the shaver well enough or you have not cleaned it for a long time.	Clean the shaver thoroughly before you continue shaving. See chapter 'Cleaning and maintenance'.
	Long hairs obstruct the shaving heads.	Clean the cutters and guards with the cleaning brush supplied. See chapter 'Cleaning and maintenance', section 'Every two months: shaving heads'.
	The shaving heads are damaged or worn.	Replace the shaving heads. See chapter 'Replacement'.
The shaver does not work when I push the on/off slide upwards.	The battery is empty.	Recharge the battery. See chapter 'Charging'.
My skin is irritated after shaving.	Your skin needs time to get used to the Philips shaving system.	Skin irritation during the first 2-3 weeks of use is possible. After this period, the skin irritation usually disappears.
The rotation speed of the shaving heads is slower than usual.	Too much dirt has collected in the shaving heads.	Clean the shaving heads. See chapter 'Cleaning and maintenance'.
	The battery is empty	Recharge the battery. See chapter 'Charging'.

Problem	Possible cause	Solution
The appliance makes a strange noise.	Too much dirt has collected in the shaving heads.	Clean the shaving heads. After cleaning, lubricate the central point on the inside of the guards with Philips Cleaning Spray (HQ110). See chapter 'Cleaning and maintenance'.

	The shaving heads are damaged or worn.	Replace the shaving heads. See chapter 'Replacement'.
--	--	---

简体中文

简介

感谢您的惠顾，欢迎光临飞利浦！为了您能充分享受飞利浦提供的支持，请在 www.philips.com/welcome 上注册您的产品。

一般说明 (图 1)

- 1 保护盖
- 2 剃须刀头
- 3 剃毛刀头部件
- 4 固定架
- 5 固定架的中央弹簧
- 6 毛发储藏室
- 7 开/关滑钮
- 8 前面板
- 9 充电指示灯
- 10 小插头的转换插座
- 11 清洁刷
- 12 飞利浦清洁喷雾剂 (HQ 110) (可选)
- 13 小插头
- 14 带插头的电源线
- 15 刀片
- 16 网罩

注意事项

使用产品之前，请仔细阅读本用户手册，并妥善保管以供日后参考。

危险

- 保持产品和电源线干燥。
- 警告符号注释：禁止用在打开的水龙头下进行清洗。(图 2)

警告

- 本产品不打算由肢体不健全、感觉或精神上有障碍或缺乏相关经验和知识的人（包括儿童）使用，除非有负责他们安全的人对他们使用本产品进行监督或指导。
- 应照看好儿童，确保他们不玩耍本产品。
- 如果剃须刀或电源线已损坏，请勿再使用。
- 电源软线不能更换，如果软线损坏，此器具（电源适配器）应废弃。如果电源软线损坏，则必须用原装型号替换，以免发生危险。

注意

- 必须在 5 摄氏度至 35 摄氏度之间的温度下使用、存放和为本产品充电。
- 仅使用随附的电源线为产品充电。
- 仅限使用随附的清洁刷。
- 确保清洁刷保持洁净。

电磁场 (EMF)

这款飞利浦产品符合关于电磁场 (EMF) 的相关标准。据目前的科学证明，如果正确使用并按照本用户手册中的说明进行操作，本产品是安全的。

充电

请确保开始充电前，剃须刀电源已关闭。如果是第一次为剃须刀充电，或是长时间未使用后充电，应让其连续充电 12 小时。充电通常需要约 8 小时。当马达停止运转或开始运转缓慢时，应为产品充电。

不要将本产品与电源接通超过 24 小时。

- 1 将小插头插入剃须刀。(图 3)
- 2 将电源插头接入插座。
 - ▶ 充电指示灯亮起，表示剃须刀正在充电。(图 4)
- 3 电池充满后，从电源插座中拔下电源插头，并从剃须刀上拔出小插头。(图 5)

注意： 本剃须刀不能插电使用。当电池电量耗尽时，请在再次使用剃须刀前为电池充电。

不接电源的剃须时间

完全充电的剃须刀在不连接电源的情况下最长可使用达 30 分钟。

使用本产品

剃须刀不能连在电源上直接使用。

- 1 取下保护盖。
- 2 向上推动开/关滑钮以接通剃须刀电源。(图 6)
- 3 将剃须刀头在皮肤上移动。作直线和迂回动作。(图 7)

注意： 仅限在干爽的面部剃须。请勿将本剃须刀与凝胶、剃须泡沫或水结合使用。

注意： 您的皮肤可能需要 2 到 3 周才能适应飞利浦剃须系统。

- 4 向下推动开/关滑钮以关闭剃须刀电源。
- 5 每次剃须后均应清洁剃须刀（见“清洁和保养”一章）。
- 6 请盖上剃须刀保护盖，以防止损坏剃须刀头并避免其内积聚灰尘。(图 8)

清洁和保养

不要使用钢丝绒、研磨性清洁剂或腐蚀性液体（例如汽油或丙酮）来清洁产品。

每次剃须后均应清洁剃须刀，以保证更好的剃须效果。为了获得最佳的清洁效果，建议您使用飞利浦清洁喷雾剂 (HQ110)。有关详情，请咨询飞利浦经销商。

注意： 并非所有国家/地区都销售飞利浦剃须刀头清洁喷雾剂 (HQ110)。请向当地的客户服务中心了解是否有售。

每次剃须后：清洗剃须刀头部件和胡茬储藏室

- 1 关闭剃须刀电源，从电源插座中拔下电源插头，并从剃须刀上拔出小插头。
- 2 用随附的清洁刷清洁产品顶部。(图 9)
- 3 垂直向上拉动剃须刀头部件，将其从剃须刀中拉出。(图 10)
- 4 用清洁刷清洁剃须刀头部件的内侧。(图 11)
- 5 用清洁刷清洁胡茬储藏室。(图 12)
- 6 将剃须刀头组件重新安装到剃须刀上。(图 13)

每两个月：清洁剃须刀头

注意： 请勿使用清洁剂或酒精来清洁剃须刀头。只能使用飞利浦清洁喷雾剂 (HQ 110)。

- 1 关闭剃须刀电源，从电源插座中拔下电源插头，并从剃须刀上拔出小插头。
- 2 垂直向上拉动剃须刀头部件，将其从剃须刀中拉出。(图 10)
- 3 要取下固定架，请捏拢中央弹簧的两侧 (1)。然后向上提起固定架，将其从剃须刀头部件中取出 (2)。(图 14)
- 4 将剃须刀头滑离固定架。一次取下并清洁一个剃须刀头。每个剃须刀头包含一组刀片和网罩。(图 15)

注意： 不要同时清洁多组刀片和网罩，因为它们都是相互匹配的。如果不小心将刀片和网罩弄混，则需要数周时间才能恢复产品的最佳剃须性能。

- 5 从刀片上卸下网罩。(图 16)
- 6 用清洁刷的短毛一侧清洁刀片。按箭头方向小心地清洁。(图 17)
- 7 用清洁刷的长毛一侧清洁网罩。(图 18)
- 8 清洁后，将刀片重新装回至网罩。(图 19)
- 9 滑动剃须刀头，将其重新安装到固定架上。(图 20)
- 10 将固定架重新安装到剃须刀头部件上（可听到“咔嚓”一声）。(图 21)
- 11 将剃须刀头组件重新安装到剃须刀上。(图 13)

存储

保持器具干燥。
必须在 5° C 至 35° C 之间的温度下使用和存放本产品。

- 1 关闭剃须刀。
- 2 使用后请盖上剃须刀保护盖，以防止损坏剃须刀头并避免其内积聚灰尘。(图 8)

更换

每两年更换一次刀头以获得最佳的剃须效果。只能使用飞利浦剃须刀头（适用于中国的 HQ4+ 或适用于世界其他各地的 HQ56）更换损坏或磨损的剃须刀头。

有关如何拆卸剃须刀头的说明，请参阅“清洁和保养”一章中的“每两个月：清洁剃须刀头”部分。

附件

为了保持剃须刀的最佳性能，请确保定期清洁并在推荐的时间更换剃须刀头。

- 剃须刀头
- 建议您每两年更换一次剃须刀头。务必仅使用飞利浦剃须刀头（适用于中国的 HQ4+ 或适用于世界其他各地的 HQ56）进行更换。(图 22)

- 清洁
- 使用飞利浦清洁喷雾剂 (HQ110) 彻底清洁剃须刀头。

环保

- 弃置产品时，请不要将其与一般生活垃圾堆放在一起：应将其交给官方指定的回收点。这样做有利于环保。(图 23)
- 内置充电电池包含可能会污染环境的物质。丢弃剃须刀时，一定要将电池取出，并将剃须刀送到官方指定的回收站。到官方指定的电池回收站处理电池。如果您在取出电池时遇到问题，您也可以将剃须刀送至飞利浦维修中心。维修中心的员工会帮您取出电池，并以环保的方式处理它。(图 24)

卸下充电电池

电池电量完全耗尽后方可取出充电电池。

- 1 从电源插座上拔下插头，并从剃须刀上拔出小插头。
- 2 让剃须刀一直运行直到停止，拧开剃须刀背面的螺丝钉 (1) 并将后面板从剃须刀上卸除 (2)。(图 25)
- 3 取出充电电池 (图 26)

取出电池之后，不要再将剃须刀与电源连接在一起。

保修与服务

如果您需要服务或信息，或有任何疑问，请访问飞利浦网站：www.philips.com。您也可与所在国家/地区的飞利浦客户服务中心联系（可从全球保修卡中找到其电话号码）。如果您所在的国家/地区没

有飞利浦客户服务中心，请与当地的飞利浦经销商联系。

保修条款

由于剃须刀头（刀片和网罩）属于易磨损物品，因此不在国际保修条款的涵盖范围之列。

故障种类和处理方法

本章归纳了使用本产品时最可能遇到的问题。如果您无法根据下面的信息解决问题，请联系您所在国家/地区的飞利浦客户服务中心。

问题	可能的原因	解决方法
剃须刀的剃须效果没有以前好。	剃须刀头变脏。您没有将剃须刀清洁干净，或长时间未清洁过剃须刀。	在继续剃须之前，请先彻底清洗剃须刀。见“清洁和保养”一章。
	过长的胡须堵塞了剃须刀头。	用随附的清洁刷清洁刀片和网罩。见“清洁和保养”中“每两个月：剃须刀头”部分。
向上推动/关滑钮时剃须刀不工作。	剃须刀头已损坏或磨损。	更换剃须刀头。见“更换”一章。
	电池已耗尽。	给电池充电。见“充电”一章。
我在剃须后出现皮肤过敏。	您的皮肤需要一定的时间来适应飞利浦剃须刀。	在前 2-3 周的使用过程中，可能会出现皮肤过敏。在此之后，皮肤过敏通常会消失。
剃须刀头的转速比平时慢。	剃须刀头中积聚了太多的灰尘。	清洁剃须刀头。请参阅“清洁和保养”一章。
	电池已耗尽	给电池充电。见“充电”一章。
产品发出奇怪的噪音。	剃须刀头中积聚了太多的灰尘。	清洁剃须刀头。清洁后，用飞利浦清洁喷雾剂 (HQ110) 润滑网罩内侧的中央点。请参阅“清洁和保养”一章。
	剃须刀头已损坏或磨损。	更换剃须刀头。见“更换”一章。

PHILIPS

产品：飞利浦电动剃须刀

型号：PQ215

额定电压：220V ~

额定频率：50Hz

额定输入功率：1 W

生产日期：请见产品胡茬储藏室

产地：中国



珠海经济特区飞利浦家庭电器有限公司

中国珠海市三灶镇琴石工业区

邮政编码：519040

全国顾客服务热线: 4008 800 008

本产品根据国标 GB4706.1-2005, GB4706.9-2008 制造