

**PHILIPS**  
**NORELCO**

**SW9700**

Tripleheader shaver



© & ™ Lucasfilm Ltd.  
© Disney

BC



## English 4

# IMPORTANT SAFETY INSTRUCTIONS

When using an electrical product, basic precautions should always be followed, including the following:

**Read all instructions before using this product.**

## DANGER

**To reduce the risk of electric shock:**

- Do not reach for a corded product that has fallen into water. Unplug immediately.
- The power plug and the accessories connected to it are not for immersion or for use in shower.
- Do not use an extension cord with this product.
- Always unplug this product from the electrical outlet immediately after use, except when product is (re)charging.
- Unplug and remove power cord from the product before cleaning.
- The batteries used in this product may present a fire or chemical burn hazard if mistreated. Do not disassemble, heat above 100°C (212°F) or incinerate.

# WARNING

## **To reduce the risk of burns, fire, electric shock, or injury to persons:**

- Close supervision is required when this product is used by, on, or near children, or persons with limited physical, sensory, or mental capabilities or invalids.
- Use this product for its intended household use as described in this manual. Do not use attachments not recommended by Philips North America LLC.
- Never operate this product if it has a damaged power cord or charging plug, if it is not working properly, if it has been dropped or damaged, or dropped into water while plugged in. For assistance call 1-800-243-3050.
- Keep the product, cord and charging plug and any attachments away from heated surfaces.
- Never drop or insert any object into any opening.
- Do not use the adapter in or near a power outlet that contains an electric air freshener to prevent damage to the adapter.
- Do not charge, clean or plug in product outdoors or operate where aerosol (spray) products are being used or where oxygen is being administered.

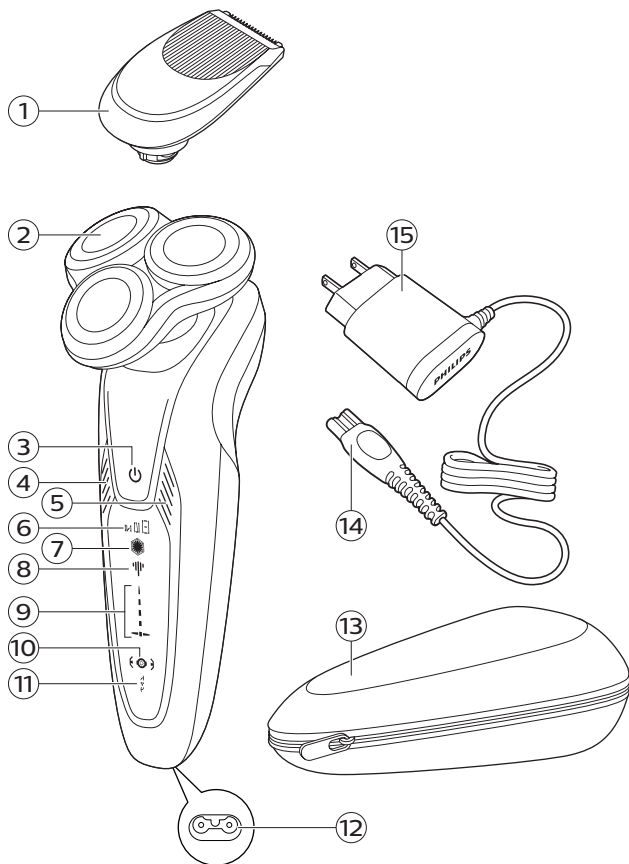
- Always check cutters and combs before using the product. Do not use the product if cutters or combs are damaged, as injury may occur.
- Always attach plug to product first, then to outlet. Be certain plug is inserted firmly into shaver up to mark indicated on plug. To disconnect, turn shaver off then remove power cord from outlet.
- Keep the power cord dry at all times. Do not handle with wet hands.
- Never put the product in direct sunlight or store at a temperature above 140°F (60°C).
- To prevent possible damage to the power cord, do not wrap power cord around the product.
- Do not attempt to open the product to remove or replace the built-in rechargeable battery.
- Only use the power cord and other accessories supplied with the product.

## SAVE THESE INSTRUCTIONS

**IMPORTANT:** The power plug contains a transformer. Do not cut off the power plug to replace it with another plug as this will cause a hazardous condition.

# Contents

Important safety instructions .....	4
General description (Fig. 1) .....	9
Introduction .....	9
The display .....	9
Charging .....	14
Using the shaver .....	15
Using the click-on attachment .....	18
Travel lock .....	19
Cleaning and maintenance .....	20
Replacement .....	23
Storage .....	25
Accessories .....	26
Assistance .....	26
Disposal .....	26
Full Two-Year Warranty .....	27
45-Day money-back guarantee .....	28





## General description (Fig. 1)

- 1 SmartClick precision trimmer attachment
- 2 Shaving unit with hair chamber
- 3 On/off button
- 4 Personal comfort settings decrease button
- 5 Personal comfort settings increase button
- 6 Personal comfort settings bar
- 7 Notification symbol
- 8 Cleaning reminder
- 9 Battery charge indicator
- 10 Travel lock symbol
- 11 Replacement reminder
- 12 Socket for small plug
- 13 Travel case
- 14 Small plug
- 15 Power plug

## Introduction

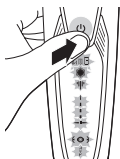
Congratulations on your purchase and welcome to Philips Norelco!

To fully benefit from the support that Philips Norelco offers, register your product at **[www.norelco.com/register](http://www.norelco.com/register)**.

## The display

Note: Remove any sticker or protective foil from the display before using the product.

## Start-up sequence

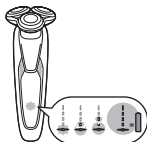


When you press the on/off button for the very first time, all display indications light up in sequence.

The shaver now contains enough energy for one shave.

## Charging

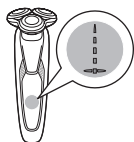
**Quick charge:** When the battery is empty and you connect the shaver to an electrical outlet, the lights of the battery charge indicator light up red one after the other repeatedly. When the battery contains enough energy for one shave, the bottom light of the battery charge indicator starts flashing red slowly.



While the shaver continues to charge, first the bottom light of the battery charge indicator flashes red and then lights up red continuously. Then the second light flashes and lights up continuously, and so on until the shaver is fully charged.

## Battery fully charged

Note: This shaver can only be used without a cord.

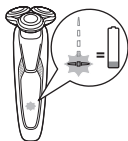


When the battery is fully charged, all lights of the battery charge indicator light up red continuously.

Note: When you press the on/off button during or after charging, you hear a sound to indicate that the shaver is still connected to the power outlet.

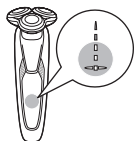
Note: When the battery is full, the display switches off automatically after 30 minutes.

## Battery low



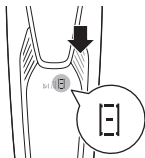
When the battery is almost empty, the bottom light of the battery charge indicator flashes red.

## Remaining battery charge



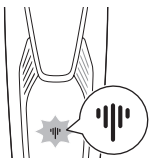
The remaining battery charge is shown by the lights of the battery charge indicator that light up continuously.

## Personal comfort settings



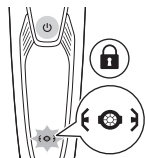
The shaver has a feature that allows you to personalize your settings. Depending on your personal shaving needs, choose between three settings, from low to high: comfort, dynamic or efficiency. When you press the button on the left or right of the display, the segment of the personal comfort settings bar that lights up shows the currently selected setting. To select a lower or higher setting, press the button on the left or right of the display.

## Cleaning reminder



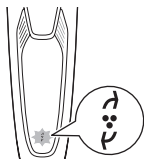
Clean the shaver after every shave for optimal performance (see 'Cleaning and maintenance'). When you switch off the shaver, the cleaning reminder flashes to remind you to clean the shaver.

## Travel lock



You can lock the shaver when you are going to travel. The travel lock prevents the shaver from being switched on by accident (see 'Activating the travel lock').

## Replacement reminder



For maximum shaving performance, replace the shaving heads every year. The shaver is equipped with a replacement reminder which reminds you to replace the shaving heads. The replacement reminder lights up and the arrows flash to indicate that you have to replace the shaving heads (see 'Replacing the shaving heads').

**Note:** After replacing the shaving heads, you need to reset the replacement reminder by pressing the on/off button for 7 seconds.

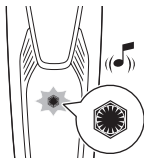
## Notification symbol



### Overheating

If the shaver overheats during charging, the notification symbol flashes. When this happens, the shaver switches off automatically. Charging continues once the temperature of the shaver has decreased to the normal level.

### Blocked shaving heads



If the shaving heads are blocked, the notification symbol flashes and the shaver beeps. Clean the shaver thoroughly before you continue to shave (see 'Cleaning the shaver under the tap'). After cleaning, if the notification symbol flashes and the shaver beeps, immediately replace the shaving heads (see 'Replacing the shaving heads').

## Charging

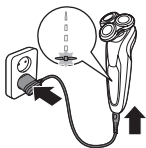
- Charging, recharging, or using the product at temperatures below 40°F (4.5°C) or higher than 95°F (35°C) adversely affects lifespan of the battery.
- Do not charge the shaver in a pouch or travel case.
- The power plug transforms 100–240V AC to less than 24V DC.

Charge the shaver before you use it for the first time and when the display indicates that the battery is almost empty.

Charging takes approx. 1 hour. A fully charged shaver has a shaving time of up to 60 minutes.

**Note:** You cannot use the shaver while it is charging.

### Charging with the power cord



- 1 Make sure the shaver is switched off.
- 2 Put the small plug in the shaver and connect the power plug to any 100V to 240V AC outlet. Use only the power cord provided. The display of the shaver indicates that the shaver is charging.
- 3 After charging, remove the power plug from the wall outlet and pull the small plug out of the shaver.

**Note:** An adapter plug may be necessary for cord usage in some foreign countries. Use an attachment plug adapter of the proper configuration for power outlet.

## Using the shaver

**Always check the shaver and all accessories before using. Do not use the shaver or any accessory if it is damaged, as this may cause injury. Always replace a damaged part with one of the original type.**



- This symbol indicates that the shaver can be used in the bath or shower.
- Use this shaver for its intended household use as described in this manual.
- For hygienic reasons, the shaver should only be used by one person.
- Trimming is easier when the skin and hair are dry.

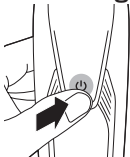
**Note:** This shaver can only be used without a cord.

## Put it to the test

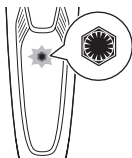
- 21 Day Trial and Conversion Process. It is a fact that your skin and beard need time to adjust to a new grooming system.
- Use your new shaver exclusively for 3 weeks to fully enjoy the closeness of a Philips Norelco shave.
- At first you may not get as close a shave as you expect, or your face may even become slightly irritated. This is normal since your beard and skin will need time to adjust. Invest 3 weeks and you'll soon experience the full joy of your new shaver.

- Stick with it! If you alternate shaving methods during the adjustment period, it may make it more difficult to adapt to the Philips Norelco shaving system.
- If you are still not convinced after 21 days, Philips Norelco will refund you the full purchase price as long as the request is received within 45 days of purchase.

## Switching the shaver on and off



- 1 To switch on the shaver, press the on/off button once.



The battery charge indicator lights up for a few seconds and the notification symbol flashes.

- 2 To switch off the shaver, press the on/off button once.

The battery charge indicator lights up for a few seconds and shows the remaining battery charge.

## Shaving

### Shaving tips

For the best results on skin comfort, pre-trim your beard if you have not shaved for 3 days or longer.

Select your personal comfort setting (see 'Personal comfort settings').



## Dry shaving



- 1 Switch the shaver on.
- 2 Stretch your skin with your free hand so blades can lift and cut whiskers. Gently press shaver to skin so the floating heads can follow the contours of your face.

Note: Do not press too hard. Too much pressure can pinch the skin into the combs.

- 3 Switch off and clean the shaver after each use. The display lights up for a few seconds to show the battery status.

## Wet shaving

For a more comfortable shave, you can also use this shaver on a wet face with shaving foam or shaving gel.



- 1 Apply some water to your skin.



- 2 Apply shaving foam or shaving gel to your skin.



- 3 Rinse the shaving unit under the tap to ensure that the shaving unit glides smoothly over your skin.
- 4 Switch the shaver on.



- 5 Move the shaving heads over your skin in circular movements to catch all hairs growing in different directions. Exert gentle pressure for a close, comfortable shave.

Note: Do not press too hard, this can cause skin irritation.

Note: Rinse the shaving unit regularly to ensure that it continues to glide smoothly over your skin.

- 6 Dry your face.
- 7 Switch off the shaver and clean it after each use.

Note: Make sure that you rinse all foam or shaving gel off the shaver.

## Using the click-on attachment

### Removing or attaching the click-on attachment



- 1 Make sure the shaver is switched off.
- 2 Pull the attachment straight off the shaver.

Note: Do not twist the attachment while you pull it off the shaver.

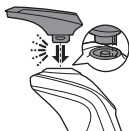


- 3 Insert the lug of the attachment into the slot in the top of the shaver. Then press down the attachment to attach it to the shaver('click').

## Using the precision trimmer attachment

You can use the trimmer to groom your beard, sideburns and moustache.

- 1 Attach the trimmer to the shaver ('click').
- 2 Switch on the shaver.



- 3 Hold the trimmer perpendicular to the skin and move it downwards while exerting gentle pressure.
- 4 Clean the trimmer after use.

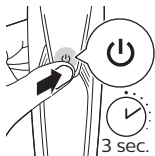


## Travel lock

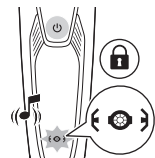
You can lock the shaver when you are going to travel. The travel lock prevents the shaver from being switched on by accident.

### Activating the travel lock

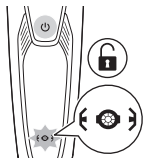
- 1 Press the on/off button for 3 seconds to enter the travel lock mode.



- 2 While you activate the travel lock, the indications on the display light up briefly and the shaver produces a short sound. When the travel lock is activated, the travel lock symbol flashes.



## Deactivating the travel lock



- 1 Press the on/off button for 3 seconds.
- While you deactivate the travel lock, the indications on the display light up briefly. When the travel lock is deactivated, the travel lock symbol flashes and the shaver switches on. The shaver is now ready for use again.

**Note:** The shaver unlocks automatically when it is connected to an electrical outlet.

## Cleaning and maintenance

- Regular cleaning guarantees better shaving results.
- Never clean, remove or replace the shaving unit while the shaver is switched on.
- Do not apply pressure to shaving head combs.
- Do not touch shaving heads with hard objects as this may dent or damage the precision-made slotted combs.
- Do not use abrasives, scourers or aggressive liquids such as gasoline or acetone to clean the shaver.

## Cleaning the shaver under the tap

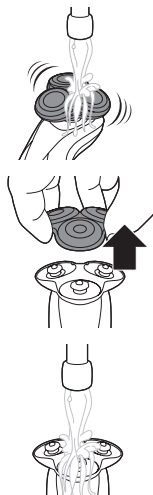
Clean the shaver after every shave for optimal performance.

**Always check if the water is too hot, to prevent burning your hands.**

**Never dry the shaving unit with a towel or tissue, as this may damage the shaving heads.**

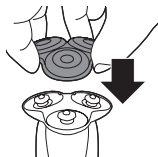
**While rinsing the shaving unit, water may drip out of the base of shaver. This is a normal occurrence.**

- 1 Switch the shaver on.
- 2 Rinse the shaving unit under a warm tap.
- 3 Switch the shaver off. Pull the shaving head holder off the bottom part of the shaving unit.
- 4 Rinse the hair chamber under the tap.





- 5 Rinse the shaving head holder under a warm tap.
- 6 Carefully shake off excess water and let the shaving head holder air dry completely.

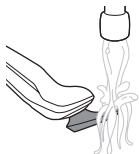


- 7 Attach the shaving head holder to the bottom part of the shaving unit ('click').

## Cleaning the precision trimmer attachment

**Never dry the trimmer with a towel or tissue, as this may damage the trimming teeth.**

Clean the trimmer after each use.



- 1 Switch the shaver on.
- 2 Rinse the trimmer under a warm tap.
- 3 After cleaning, switch off the shaver.
- 4 Carefully shake off excess water and let the trimmer air dry.
- 5 For optimal performance, lubricate the teeth of the trimmer with a drop of mineral oil every six months.

# Replacement

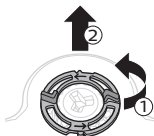
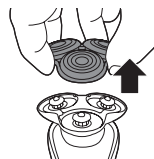
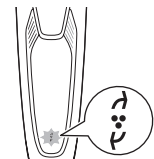
## Replacing the shaving heads

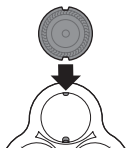
For maximum shaving performance, replace the shaving heads once a year. Replace damaged shaving heads immediately. Always replace the shaving heads with original Philips Norelco shaving heads only (see 'Accessories').

### Replacement reminder

The replacement reminder indicates that the shaving heads need to be replaced. The replacement reminder lights up and the arrows flash when you switch the shaver off.

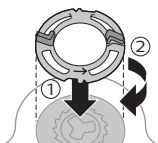
- 1 Switch the shaver off.
- 2 Pull the shaving head holder off the bottom part of the shaving unit.
- 3 Turn the retaining ring counterclockwise and lift it off the shaving head. Repeat this process for the other retaining rings. Place them aside in a safe place.
- 4 Remove the shaving heads from the shaving head holder. Discard the used shaving heads immediately to avoid mixing them with the new shaving heads.



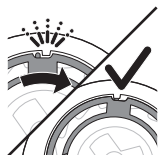


- 5** Place the new shaving heads in the shaving head holder.

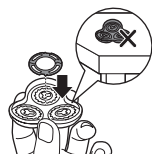
Note: Make sure the notches on both sides of the shaving heads fit exactly onto the projections in the shaving head holder.



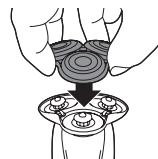
- 6** Place the retaining ring on the shaving head and turn it clockwise to reattach the retaining ring. Repeat this process for the other retaining rings.



- Each retaining ring has two recesses that fit exactly around the projections of the shaving head holder. Turn the ring clockwise until you hear a click to indicate that the ring is fixed.

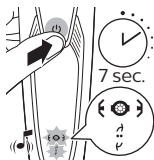


Note: Hold the shaving head holder in your hand when you reinsert the shaving heads and reattach the retaining rings. Do not place the shaving head holder on a surface, as this may cause damage to the shaving heads.



- 7** Attach the shaving head holder to the bottom part of the shaving unit ('click').





- 8** To reset the replacement reminder, press and hold the on/off button for approx. 7 seconds.

This product has no other user-serviceable parts. For assistance call 1-800-243-3050.

## Storage



Store the shaver in the travel case.

**Note:** Always let the shaver dry completely before you store it in the travel case.

- Be sure the product is turned off. Remove cord from outlet and the product before storing it in a safe, dry location where it will not be crushed, banged, or subject to damage.
- Do not wrap cord around the product when storing.
- Store cord in a safe location where it will not be cut or damaged.
- Do not place or store the product where it can fall or be pulled into a tub or sink, water or other liquid while plugged in.

## Accessories



Replacement parts and accessories may be purchased at a store near you or on our website **[www.philips.com/store](http://www.philips.com/store)**.

The following accessories are available:

- SH90 Philips Norelco shaving heads
- RQ111 Philips Norelco SmartClick beard styler
- RQ585 Philips Norelco SmartClick cleansing brush

## Assistance

For assistance, visit our website:

**[www.philips.com/support](http://www.philips.com/support)** or call toll free 1-800-243-3050.

Online information is available 24 hours a day, 7 days a week.

## Disposal



- This product contains a rechargeable lithium-ion battery which must be disposed of properly.
- Contact your local town or city officials for battery disposal information. You can also call 1-800-822-8837 or visit **[www.call2recycle.org](http://www.call2recycle.org)** for battery drop-off locations.
- For assistance, visit our website **[www.philips.com/support](http://www.philips.com/support)** or call 1-800-243-3050 toll free.

- Your product is designed and manufactured with high quality materials and components, which can be recycled and reused. For recycling information, please contact your local waste management facilities or visit **[www.recycle.philips.com](http://www.recycle.philips.com)**

## Full Two-Year Warranty

Philips North America LLC warrants this new product (except cutters and combs) against defects in materials or workmanship for a period of two years from the date of purchase, and agrees to repair or replace any defective product without charge.

**IMPORTANT:** This warranty does not cover damage resulting from accident, misuse or abuse, lack of reasonable care, the affixing of any attachment not provided with the product or loss of parts or subjecting the product to any but the specified voltage or batteries.\*

**NO RESPONSIBILITY IS ASSUMED FOR ANY SPECIAL, INCIDENTAL OR CONSEQUENTIAL DAMAGES.**

In order to obtain warranty service, simply go to **[www.philips.com/support](http://www.philips.com/support)** for assistance. It is suggested that for your protection you return shipments of product by insured mail, insurance prepaid. Damage occurring during shipment is not covered by this warranty.

NOTE: No other warranty, written or oral, is authorized by Philips North America LLC.

This warranty gives you specific legal rights, and you may also have other rights which vary from state to state. Some states do not allow the exclusion or limitation of incidental or consequential damages, so the above exclusion and limitations may not apply to you.

\*Read enclosed instructions carefully.

## 45-DAY MONEY-BACK GUARANTEE

To enjoy the closest and most comfortable shave from your new Philips Norelco Men's Shaver, the shaver should be used exclusively for 3 weeks. This allows your hair and skin enough time to adapt to the Philips Norelco Shaving System. If, after that period of time, you are not fully satisfied with your Philips Norelco Men's Shaver, send the product back along with dated sales receipt and we'll refund you the full purchase price.

**The product must be shipped prepaid by insured mail, insurance prepaid, have the original sales receipt, indicating purchase price and date of purchase, and the money-back guarantee return authorization form enclosed.**

**We cannot be responsible for lost mail.**

The product must be postmarked no later than 45 days after the date of purchase. Philips reserves the right to verify the purchase price of the product and limit refunds not to exceed suggested retail price.

**To obtain money-back guarantee return authorization form, call 1-800-243-3050 for assistance.**

**Delivery of refund check will occur  
6–8 weeks after receipt of returned product.**





Manufactured for:  
Philips Personal Health  
a division of Philips North America LLC  
P.O. Box 10313, Stamford, CT 06904 USA



This symbol on the product's nameplate means it is listed by Underwriters' Laboratories, Inc.

Norelco and Tripleheader are registered trademarks of Philips North America LLC.

PHILIPS and Philips shield are registered trademarks of Koninklijke Philips N.V.

©2017 Philips North America LLC.  
All rights reserved.

