

Register your product and get support at
www.philips.com/welcome

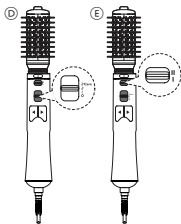
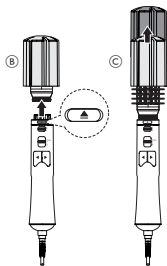
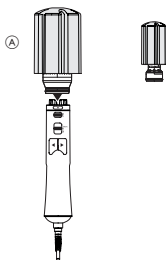
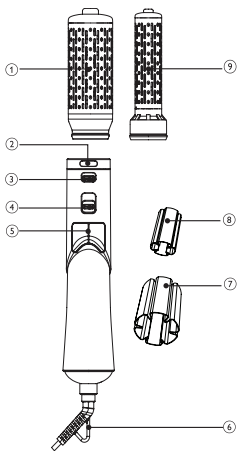
HP8665/80

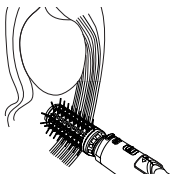
HP8665/81



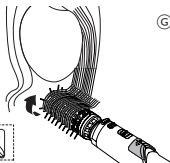
EN User manual

PHILIPS

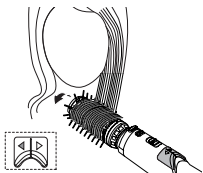




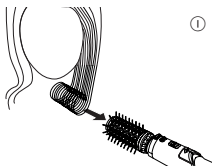
F



G



H



I

1 Introduction

Congratulations on your purchase, and welcome to Philips! To fully benefit from the support that Philips offers, register your product at www.philips.com/welcome.

The Philips Dynamic Volume Brush is an airstyler with an automatic rotation system to help you achieve a professional look just like at the hairdresser. Additionally to that the airstyler is provided with 2 different brush attachments (small and big diameter) to fit for all hair lengths and styling desires.

Moreover, this airstyler has features that protect your hair from damage and give you the reassurance of the best results. The brush attachments contain natural bristles for smoother hair and less friction. The appliance is provided with an ionizer that produces negatively charged ions. The ions are spread over the hair with the air coming out of the appliance and prevent static and flyaway hair, leaving it frizz-free and shiny. Next to the ion function, the brush attachments of this airstyler have a ceramic coating that distributes gentler warmth than a conventional coating, thus protecting your hair from over-drying.

Overview of the Airstyler

- ① **Big brush attachment:**
Suitable to give the hair a general shape and for longer hair-length.
- ② **Brush attachment release button.**
- ③ **Rotation speed button.**
- ④ **Temperature and airflow button.**
- ⑤ **Rotation direction buttons.**
- ⑥ **Hanging loop.**
- ⑦ **Protection cap of the big brush.**

⑧ **Protection cap of the small brush.**

⑨ **Small brush attachment:**

Suitable for boosting the hair-style (for intensive inward or outward styling) and for shorter hair-length.

2 Important

Read this user manual carefully before you use the appliance and keep it for future reference.

- **WARNING:** Do not use this appliance near water.
- When the appliance is used in a bathroom, unplug it after use since the proximity of water presents a risk, even when the appliance is switched off.
- **WARNING:** Do not use this appliance near bathtubs, showers, basins or other vessels containing water.
- Do not insert metal objects into the air grilles to avoid electric shock.
- Never block the air grilles.
- Before you connect the appliance, ensure that the voltage indicated on the appliance corresponds to the local power voltage.
- Do not use the appliance for any other purpose than described in this manual.
- Only use the appliance on human hair.
- When the appliance is connected to the power, never leave it unattended.
- Always unplug the appliance after use.
- Never use any accessories or parts from other manufacturers or that Philips does not specifically recommend. If you use such accessories or parts, your guarantee becomes invalid.
- Do not wind the mains cord round the appliance.
- If the mains cord is damaged, you must have it replaced by Philips, a service centre authorised by Philips or similarly qualified persons in order to avoid a hazard.



- This appliance is not intended for use by persons (including children) with reduced physical, sensory or mental capabilities, or lack of experience and knowledge, unless they have been given supervision or instruction concerning use of the appliance by a person responsible for their safety.
- Children should be supervised to ensure that they do not play with the appliance.
- For additional protection, we advise you to install a residual current device (RCD) in the electrical circuit that supplies the bathroom. This RCD must have a rated residual operating current not higher than 30mA. Ask your installer for advice.
- If the appliance overheats, it switches off automatically. Unplug the appliance and let it cool down for a few minutes. Before you switch the appliance on again, check the grilles to make sure they are not blocked by fluff, hair, etc.
- Prevent the hot surfaces of the appliance from coming into contact with your skin.
- If you use the appliance on color-treated hair, the brush body surface may stain.
- Do not rinse the appliance/brushes under the tap.
- Do not activate brush rotation switch without any attachment attached.

Noise level: $L_c = 81$ dB(A)

Electromagnetic fields (EMF)

This appliance complies with all standards regarding electromagnetic fields (EMF). If handled properly and according to the instructions in this user manual, the appliance is safe to use based on scientific evidence available today.

Environment

Do not throw away the appliance with the normal household waste at the end of its life, but hand it in an official collection point for recycling. By doing this, you help to preserve the environment.



3 Use the airstyler

We recommend to practice with the appliance 2 or 3 times so you get used to how it works. Try starting with the lower rotation speed for this practice.

Note: Always let the appliance and attachments cool down before you connect or disconnect the attachments. Do not use the appliance on completely wet hair. Dry your hair with a towel first or pre-dry your hair. The appliance is most effective on towel-dry hair. Comb through your hair to avoid that the hair gets entangled around the brush. Let the dried and styled hair cool down before you comb, brush or finger-comb it into its final style. Never activate the rotation function without brush attachments.

Tip: To prevent pulling out of hairs, the appliance is provided with a security system. If the pressure of your hair on the brush exceeds a certain limit, the rotation slows down.

Before styling your hair

- 1 Choose the brush attachment that fits best for your hair and snap it onto the styler (A).
- 2 To disconnect the attachment, press the release button (B) and pull it off.
- 3 Connect the plug to a power supply socket.
- 4 Comb your hair and divide your hair into small sections.
- 5 Remove the protection cap of the brush (C).

- 6 Select the desired setting to switch on the appliance (ⓓ):
 - **Care**: Caring temperature with strong airflow to set your style.
 - **Ⓢ**: High temperature with strong airflow for fast drying.
 - **Ⓩ**: Warm temperature with gentle airflow to protect damp hair from becoming too dry.
 - **0**: Off
 - The ion function is automatically activated when the appliance is switched on. The function provides additional shine and reduces frizz.
 - 7 Choose your preferred rotation speed (ⓔ). For the first few applications, it is recommended to use the lower rotation speed to get used to the application mode.
-

Style your hair

Make waves/volume in the hair

- 1 Insert the brush into the hair tips (ⓕ), and use the rotation with according direction to roll-up the hairs to the hair roots (ⓐ).
- 2 Keep the brush at the hair roots until the hair is completely dry.
- 3 Remove the brush out of the hair by using the opposite rotation direction (ⓗⓓ).
- 4 To style the rest of your hair, repeat steps 1 to 3.

Style the hair tips

- 1 Insert the brush into the hair tips.
- 2 Choose the rotation direction for the desired result (inwards or outwards).
- 3 Activate the rotation and let it rotate at the hair tips to shape them until the hair is completely dry and properly shaped.
- 4 To style the rest of your hair, repeat steps 1 to 3.

Straighten the hair

- 1 Insert the brush underneath your hair roots.
- 2 Pull the brush down the length of the hair from roots to tips without using the rotation.
- 3 To straighten the rest of your hair, repeat steps 1 to 2.

Tip: For more styling tips, visit www.philips.com/haircare.

4 Storage

Note: Do not wind the mains cord round the appliance. Never rinse the appliance or brushes with water.

- 1 Switch off and unplug the appliance.
- 2 Place it on a heat-resistant surface until it cools down.
- 3 Clean the appliance and attachments with a damp cloth. Remove hairs and dust from the brush attachment but never insert metal objects into the appliance for cleaning.
- 4 Always use the protection cap to store the brush attachments.
- 5 Keep the appliance in a safe and dry place, free of dust. You can also hang the appliance from its hanging loop.

5 Guarantee and service

If you need information e.g. about replacement of an attachment or if you have a problem, please visit the Philips website at www.philips.com/support or contact the Philips Customer Care Centre in your country. The phone number is in the worldwide guarantee leaflet. If there is no Consumer Care Centre in your country, go to your local Philips dealer.

6 Troubleshooting

| Problem | Cause | Solution |
|-------------------------------------|---|---|
| The appliance does not work at all. | The power socket to which the appliance has been connected may not live. | Ensure the socket is live. |
| | The appliance may have overheated and switched itself off. | Unplug the appliance and let it cool down for a few minutes. Before you switch on the appliance again, check the grilles to make sure they are not blocked by fluff, hair, etc. |
| | The appliance may not be suitable for the voltage to which it has been connected. | Ensure that the voltage indicated on the type plate of the appliance corresponds to the local mains voltage. |



© Royal Philips Electronics N.V. 2012

All rights reserved.

Specifications are subject to change without notice.

Trademarks are the property of Koninklijke Philips Electronics N.V. or their respective owners.

3140 035 29581

