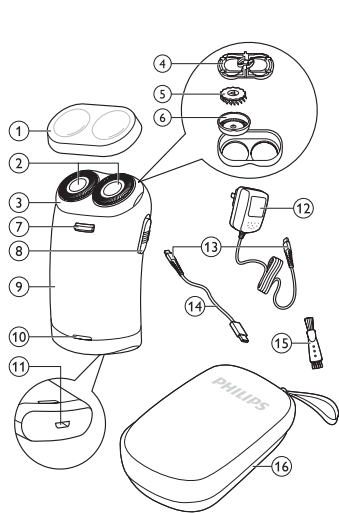




PHILIPS



www.philips.com



100% recycled paper
100% papier recyclé
100% 循环再造纸

4222.002.5435.1

ENGLISH

Introduction

Congratulations on your purchase and welcome to Philips! To fully benefit from the support that Philips offers, register your product at www.philips.com/welcome.

General description (Fig. 1)

- 1 Protection cap
- 2 Shaving heads
- 3 Shaving unit
- 4 Retaining frame
- 5 Cutter
- 6 Guard
- 7 Shaving unit release button
- 8 On/off slide
- 9 Shaver
- 10 Charging light
- 11 Socket for micro USB plug
- 12 Adapter
- 13 Micro USB plug
- 14 USB cable
- 15 Cleaning brush
- 16 Shaver storage pouch

Important

Read this user manual carefully before you use the appliance and save it for future reference.

Danger

- Warning: Keep the appliance, the adapter and the USB cable dry.
- This symbol means: Forbidden to clean under a running tap (Fig. 2).

Warning

- The adapter contains a transformer. Do not cut off the adapter to replace it with another plug, as this causes a hazardous situation.
- Warning: Do not use this appliance close to a bathtub, shower or other containers filled with water.
- Check if the voltage indicated on the adapter corresponds to the local mains voltage before you connect the appliance.
- This appliance is not intended for use by persons (including children) with reduced physical, sensory or mental capabilities, or lack of experience and knowledge, unless they have been given supervision or instruction concerning use of the appliance by a person responsible for their safety.

- Keep the appliance and its cable out of the reach of children.

Caution

- Only use the adapter or a USB port (e.g. computer) to charge the appliance.
- Do not use the shaver; the adapter or the USB cable if it is damaged.
- If the adapter or the USB cable is damaged, always have it replaced with one of the original type in order to avoid a hazard.
- Charge, use and store the shaver at a temperature between 5°C and 35°C.
- Do not use the shaver in combination with pre-shave lotions, creams, foams, gels or other cosmetic products.

Compliance with standards

- This Philips appliance complies with all standards regarding electromagnetic fields (EMF). If handled properly and according to the instructions in this user manual, the appliance is safe to use based on scientific evidence available today.
- This shaver complies with the applicable IEC safety standards.

Charging

Note: Charge the appliance when the motor stops or starts running slower.

The shaver can be charged with the adapter or the USB cable supplied with the appliance. Make sure the shaver is switched off when you start to charge it.

When you charge the shaver for the first time or after a long period of non-use, let it charge continuously for 12 hours. Charging normally takes approx. 8 hours.

For optimal performance, only charge the shaver when the battery is low.

Do not leave the appliance connected to the mains or USB port for more than 24 hours.

- 1 Put the micro USB plug in the shaver (Fig. 3).
- 2 Put the adapter in the wall socket or put the USB cable into a USB port (e.g. computer) (Fig. 4).
- ▶ The charging light goes on to indicate that the appliance is charging (Fig. 5).

Note: Charge the shaver for at least 8 hours but not more than 24 hours.

- 3 When the battery is fully charged, remove the micro USB plug from the shaver. Then remove the adapter from the wall socket or the USB cable from the USB port (Fig. 6).

Note: You cannot use the shaver when it is connected to the mains or a USB port. When the battery is empty, you have to recharge the battery before you can use the shaver again.

Cordless shaving time

A fully charged shaver has a cordless shaving time of approximately 30 minutes.

Using the appliance

Note: The shaver cannot be used when it is connected to the mains or a USB port.

Shaving

- 1 Remove the protection cap.
 - 2 Press the travel lock (1) and push the on/off slide upwards (2) to switch on the shaver (Fig. 7).
 - 3 Move the shaving heads quickly over your skin. Make both straight and circular movements (Fig. 8).
- Shaving on a dry face gives the best results. Your skin may need 2 or 3 weeks to get accustomed to the Philips shaving system.
- 4 After use, push the on/off slide downwards to switch off the shaver.
 - 5 Put the protection cap on the shaver every time you have used it, to prevent damage and to avoid dirt accumulation in the shaving heads (Fig. 9).

Cleaning and maintenance

Never use scouring pads, abrasive cleaning agents or aggressive liquids such as petrol or acetone to clean the appliance.

Regular cleaning guarantees better shaving performance. For the best cleaning results, we advise you to use Philips Cleaning Spray (HQ110). You can also clean the shaver in the following way:

Every week: shaving unit and hair chamber

- 1 Switch off the shaver.
- 2 Clean the top of the appliance with the cleaning brush supplied (Fig. 10).
- 3 Press the release button slightly downwards (1) and remove the shaving unit (2) (Fig. 11).
- 4 Clean the inside of the shaving unit and the hair chamber with the cleaning brush (Fig. 12).
- 5 Put the shaving unit back onto the shaver ('click') (Fig. 13).

Every two months: shaving heads

- 1 Switch off the shaver.
- 2 Press the release button slightly downwards (1) and remove the shaving unit (2) (Fig. 11).
- 3 Push the sides of the central spring towards each other (1) and then lift the retaining frame out of the shaving unit (2) (Fig. 14).
- 4 Slide the shaving heads out of the retaining frame.

Hold your finger underneath the shaving head to keep the cutter and guard together.

- 5 Disassemble and clean the shaving heads one by one (Fig. 15).

Note: Do not clean more than one cutter and guard at a time, since they are all matching sets. If you accidentally mix up the cutters and guards, it may take several weeks before optimal shaving performance is restored.

- 6 Clean the cutter with the short-bristled side of the cleaning brush (Fig. 16).
- 7 Clean the guard with the cleaning brush (Fig. 17).
- 8 Slide the shaving heads back into the retaining frame and put the retaining frame back into the shaving unit.

- 9 Put the shaving unit back onto the shaver ('click') (Fig. 13).

Brush carefully in the direction of the arrow.

Storage

- 1 Always put the protection cap on the shaver after use, to prevent damage and to avoid dirt accumulation in the shaving heads (Fig. 9).
- 2 Put the shaver in the storage pouch.

Replacement

Replace the shaving heads every two years for optimal shaving results.

Replace damaged or worn shaving heads with HQ4 Philips shaving heads only.

- 1 Switch off the shaver.
- 2 Press the release button slightly downwards (1) and remove the shaving unit (2) (Fig. 11).
- 3 Push the sides of the central spring towards each other (1) and then lift the retaining frame out of the shaving unit (2) (Fig. 18).
- 4 Slide the shaving heads out of the retaining frame.
- 5 Slide new shaving heads into the retaining frame (Fig. 19).
- 6 Put the retaining frame back into the shaving unit.
- 7 Put the shaving unit back onto the shaver ('click') (Fig. 13).

Ordering accessories

To purchase accessories for this appliance, please visit our online shop at www.shop.philips.com/service. If the online shop is not available in your country, go to your Philips dealer or a Philips service centre. If you have any difficulties obtaining accessories for your appliance, please contact the Philips Consumer Care Centre in your country. You find its contact details in the worldwide guarantee leaflet.

To retain the top performance of your shaver, make sure you clean it regularly and replace its shaving heads at the recommended time.

Shaving heads

- We advise you to replace your shaving heads every two years. Always replace with HQ4 Philips shaving heads. (Fig. 20)

Cleaning

- Use Philips Cleaning Spray (HQ110) to clean the shaving heads thoroughly.

Environment

- Do not throw away the appliance with the normal household waste at the end of its life, but hand it in at an official collection point for recycling. By doing this, you help to preserve the environment (Fig. 21).
- The built-in rechargeable battery contains substances that may pollute the environment. Remove the battery before you discard and hand in the appliance at an official collection point. Dispose of the battery at an official collection point for batteries. If you have trouble removing the battery, you can also take the appliance to a Philips service centre. The staff of this centre will remove the battery for you and will dispose of it in an environmentally safe way (Fig. 22).

Removing the rechargeable battery

Only remove the battery if it is completely empty.

- 1 Disconnect the shaver from the wall socket or from the USB port and let the shaver run until it stops.
- 2 Insert a flat-head screwdriver between the plastic bottom of the shaver and the socket for the micro USB plug. Pry the bottom off the shaver (Fig. 23).
- 3 Insert the flat-head screwdriver between the housing of the shaver and the printed circuit board. Use force to separate the housing halves and take out the battery holder. (Fig. 24)
- 4 Insert the flat-head screwdriver between the battery holder and the battery. Apply some force to break the connection strips. Take out the battery (Fig. 25).

Do not connect the shaver to the mains again after the rechargeable battery has been removed.

Guarantee and service

If you need service or information or if you have a problem, please visit the Philips website at www.philips.com/support or contact the Philips Consumer Care Centre in your country. You find its phone number in the worldwide guarantee leaflet. If there is no Consumer Care Centre in your country, go to your local Philips dealer.

Guarantee restrictions

The shaving heads (cutters and guards) are not covered by the terms of the international guarantee because they are subject to wear.

Troubleshooting

This chapter summarises the most common problems you could encounter with the appliance. If you are unable to solve the problem with the information below, visit www.philips.com/support for a list of frequently asked questions or contact the Consumer Care Centre in your country.

Problem	Possible cause	Solution
The shaver does not shave as well as it used to.	The shaving heads are dirty. You have not cleaned the shaver well enough or you have not cleaned it for a long time.	Clean the shaving heads thoroughly before you continue shaving. See chapter 'Cleaning and maintenance'.
	Long hairs obstruct the shaving heads.	Clean the cutters and guards with the cleaning brush supplied. See chapter 'Cleaning and maintenance'.
	You mixed up the cutters and guards when you placed them back into the retaining frame after cleaning.	Put each cutter in the other guard. If you do not switch the cutters, it may take 2 to 3 weeks until optimal shaving performance is restored.

Problem	Possible cause	Solution
	The shaving heads are damaged or worn.	Replace the shaving heads. See chapter 'Replacement'.
The shaver does not work when I push the on/off slide upwards.	The rechargeable battery is empty.	Recharge the battery. See chapter 'Charging'.
My skin is irritated after shaving.	Your skin needs time to get used to the Philips shaving system.	Skin irritation during the first 2 to 3 weeks of use is possible. After this period, the skin irritation usually disappears.
The rotation speed of the shaving heads is slower than usual.	Too much dirt has collected in the shaving heads.	Clean the shaving heads. See chapter 'Cleaning and maintenance'.
	The rechargeable battery is low.	Recharge the battery. See chapter 'Charging'.
The shaver does not charge when I connect it to a computer.	The computer is switched off or in sleep mode	Switch on the computer.

繁體中文

簡介

恭喜您購買本產品並歡迎加入飛利浦！請於 www.philips.com/welcome 註冊您的產品，以善用飛利浦提供的支援。

一般說明 (圖 1)

- 1 保護蓋
- 2 電鬚刀刀頭
- 3 除毛刀頭組
- 4 固定架
- 5 刀具
- 6 刀網
- 7 刮鬚刀頭組釋放按鈕
- 8 開/關 (On/Off) 滑動開關
- 9 電鬚刀
- 10 充電指示燈
- 11 micro USB 插頭用插座
- 12 轉換器
- 13 Micro USB 插頭
- 14 USB 纜線
- 15 清潔刷
- 16 電鬚刀收納袋

重要事項

在使用本產品前，請先仔細閱讀本使用手冊，並保留使用手冊以供日後參考。

- 危險**
- 警告：請將本產品、轉換器和 USB 纜線保持乾燥。
- 此符號表示：禁止在水龍頭下清洗。(圖 2)

- 警告**
- 電源轉換器內含一個變壓器。請勿切斷電源轉換器而以其他的插頭取代，否則會造成危險。
- 警告：請勿在浴缸、淋浴間或其他裝水容器附近使用本產品。
- 在您連接電源之前，請先檢查轉換器上所標示的電壓是否與您當地的電源系統電壓一致。
- 基於安全考慮，在缺乏監督及適當指示之下，本產品不適用於孩童及任何身體、知覺、或心理功能障礙者，或缺乏使用經驗及知識者。
- 請將本產品與其纜線置放於兒童無法取得的地方。

- 警告**
- 只能使用轉換器或 USB 連接埠 (例如電腦) 替本產品充電。
- 電鬚刀、轉換器或 USB 纜線損壞時，請勿使用。

- 如果轉換器或 USB 纜線損壞，務必更換相同型號的轉換器或 USB 纜線，以免發生危險。
- 請於 5° C 到 35° C 間充電、使用並存放電鬚刀。
- 使用電鬚刀時，請勿搭配任何刮鬚水、乳霜、乳液、凝露或其他其他化妝品。

- 符合標準**
- 本飛利浦產品符合電磁波 (Electromagnetic fields，EMF) 所有相關標準。只要使用方式正確並依照本使用手冊之說明進行操作，根據現有的科學研究資料，使用本產品並無安全顧慮。
- 本電鬚刀符合適用的 IEC 安全標準。

充電

注意：請在馬達停止轉動時或者運轉速度開始變慢時，為電鬚刀進行充電。電鬚刀可使用本產品隨附的轉換器或 USB 纜線進行充電。開始充電之前，務必將電鬚刀的電源關閉。當您第一次為電鬚刀充電，或長時間未使用時，請連續充電 12 小時。一般充電時間約需 8 個小時。為保持最佳效能，只有在電力不足時才為電鬚刀充電。

請勿讓本產品插在電源或 USB 連接埠上超過 24 小時。

- 1** 將 micro USB 插頭放入電鬚刀中。(圖 3)
- 2** 將轉換器插入牆上插座，或將 USB 纜線插入 USB 連接埠 (例如電腦)。(圖 4)
- ▶ 充電指示燈亮起，表示產品正在進行充電。(圖 5)

注意：請將電鬚刀充電至少滿 8 小時，但切勿超過 24 個小時。

- 3** 電池充飽電時，請將 micro USB 插頭從電鬚刀拔下。然後再將轉換器拔離牆上插座，或將 USB 纜線拔離 USB 連接埠。(圖 6)

注意：當電鬚刀插在電源或 USB 連接埠上時無法使用。電池電量耗盡時，您必須先讓電池充電，才能再度使用電鬚刀。

無線刮鬚時間

電池充滿的電鬚刀可不插電刮鬚約 30 分鐘。

使用本產品

注意：當電鬚刀插在電源或 USB 連接埠上時無法使用。

刮鬚

- 1** 卸下保護蓋。
- 2** 按下旅行鎖 (1) 並將開/關 (On/Off) 滑動開關往上推 (2)，即可開啟電鬚刀電源。(圖 7)
- 3** 將電鬚刀刀頭在皮膚上快速移動，請同時用直線及畫圓的方式來移動。(圖 8)

乾刮可獲得最佳的刮鬚效果。您的皮膚可能需要 2 到 3 週的時間才能完全適應飛利浦電鬚刀系統。

- 4** 使用完畢後，將 On/Off 開關往下推，即可關閉電鬚刀電源。
- 5** 每次使用後，請蓋上電鬚刀保護蓋，以免電鬚刀刀頭受損或累積污垢。(圖 9)

清潔與維護

絕對不可使用鋼絲絨、磨蝕性的清潔劑或侵蝕性的液體 (例如汽油或丙酮) 清潔本產品。

定期清潔以維持較佳的刮鬚效果。為達到最理想的清潔效果，我們建議您使用飛利浦噴霧清潔劑 (HQ110)。您也可以利用下列方法來清潔電鬚刀：

每週：清潔電鬚刀組及鬚渣室

- 1** 請先關閉電鬚刀電源。
- 2** 使用隨附的清潔刷清潔產品上方。(圖 10)
- 3** 稍微朝下按下釋放按鈕 (1)，並拆下電鬚刀組 (2)。(圖 11)
- 4** 用清潔刷清潔電鬚刀組的內部和鬚渣室。(圖 12)
- 5** 將電鬚刀組裝回電鬚刀上 (會聽到喀噠一聲)。(圖 13)

每兩個月：電鬚刀頭

- 1** 請先關閉電鬚刀電源。

- 2** 稍微朝下按下釋放按鈕 (1)，並拆下電鬚刀組 (2)。(圖 11)

- 3** 將中央彈簧的兩側朝中間推壓 (1)，然後提起固定架將電鬚刀組取出 (2)。(圖 14)

- 4** 將電鬚刀刀頭推出固定架外。將手指置於電鬚刀刀頭下方，使刀具及刀網合在一起。

- 5** 逐一拆下並清潔刀頭。(圖 15)

注意：因為刀片及刀網是成對的一組，請勿一次清潔一組以上。如果您不小心將刀片及刀網混在一起，可能要花幾週的時間才能恢復最理想的刮鬚效果。

- 6** 請使用清潔刷的短毛側來清潔刀具。(圖 16)
- 請朝箭頭方向小心刷動。

- 7** 用清潔刷清潔刀網。(圖 17)

- 8** 將電鬚刀刀頭推回固定架，然後將固定框裝回電鬚刀組。

- 9** 將電鬚刀組裝回電鬚刀上 (會聽到喀噠一聲)。(圖 13)

收納

- 1** 使用後，請為電鬚刀蓋上保護蓋以防受損，並避免污垢累積在電鬚刀刀頭中。(圖 9)

- 2** 將電鬚刀放入收納袋中。

更換

每隔兩年更換一次電鬚刀頭，以確保維持最佳的刮鬚效果。更換損壞或磨損的電鬚刀刀頭時，限使用 HQ4 飛利浦電鬚刀刀頭。

- 1** 請先關閉電鬚刀電源。
- 2** 稍微朝下按下釋放按鈕 (1)，並拆下電鬚刀組 (2)。(圖 11)
- 3** 將中央彈簧的兩側朝中間推壓 (1)，然後提起固定架將電鬚刀組取出 (2)。(圖 18)
- 4** 將電鬚刀刀頭推出固定架外。
- 5** 將新的電鬚刀刀頭套入固定架中。(圖 19)
- 6** 將固定架裝回電鬚刀組。
- 7** 將電鬚刀組裝回電鬚刀上 (會聽到喀噠一聲)。(圖 13)

訂購配件

如需購買本產品的配件，請造訪我們的線上商店：www.shop.philips.com/service。若您所在國家/地區沒有線上商店，請聯絡您的飛利浦經銷商或飛利浦服務中心。如果無法取得產品的配件，請聯絡您所在國家/地區的飛利浦客戶服務中心。如需詳細聯絡資料，請參閱全球保證書。若要維持電鬚刀的最佳效能，請務必定期清潔電鬚刀，並於建議的時間更換電鬚刀刀頭。

- 電鬚刀刀頭**
- 我們建議您每兩年更換一次電鬚刀頭。更換時，請一律使用 HQ4 飛利浦電鬚刀頭 (圖 20)

- 清潔**
- 使用飛利浦噴霧清潔劑 (HQ110) 徹底清潔電鬚刀頭。

環境保護

- 本產品壽命結束時請勿與一般家庭廢棄物一併丟棄。請將該產品放置於政府指定的回收站，此舉能為環保盡一份心力。(圖 21)
- 本產品內建的充電電池可能含有污染環境的物質。丟棄本產品或是將產品放到政府指定的回收站前，請先取出電池，並將電池送到政府指定的電池回收站。若您無法取出電池，可將產品拿到飛利浦服務中心，服務中心的人員會為您卸下電池，並以無害環境的方式處理電池。(圖 22)

取出充電電池

必須將電池電力完全耗盡後才能拆卸電池。

- 1** 將電鬚刀從牆上插座或 USB 連接埠拔下，讓電鬚刀持續運轉直到停止為止。
- 2** 將一字螺絲起子插入電鬚刀的塑膠底部與 micro USB 插頭插孔之間，然後撬開電鬚刀底部。(圖 23)
- 3** 將一字螺絲起子插入電鬚刀外殼與印刷電路板之間。用力拆開兩片外殼，然後取出電池固定座。(圖 24)
- 4** 將一字螺絲起子插入電池固定座與電池之間。稍微用力拆開連接片。取出電池。(圖 25)

取出充電式電池後，請不要再把電鬚刀接上電源插座。

■ 保固與服務

若您需要相關服務或資訊，或是有任何問題，請瀏覽飛利浦網站：
www.philips.com/support，或聯絡當地的飛利浦客戶服務中心，您可以在全球保證書上找到聯絡電話。若您當地沒有客戶服務中心，請洽詢當地的飛利浦經銷商。

保固限制
電鬚刀刀頭 (刀具和刀網) 由於其耗損性，因此不在全球保固範圍內。

■ 故障排除

本章概述您使用本產品時最常遇到的問題。如果您無法利用以下資訊解決您遇到的問題，請造訪 www.philips.com/support，或聯絡您所在國家/地區的飛利浦客戶服務中心。

問題	可能原因	解決方法
電鬚刀不像平常一樣運作。	電鬚刀刀頭不潔。 電鬚刀清潔不夠徹底或是太久沒有清潔。	在您繼續刮鬚前，請徹底清潔電鬚刀頭。請參閱「清潔與維護」單元。
	長鬚鬚卡住電鬚刀頭。	請使用隨附的毛刷清潔刀具及刀網。參閱「清潔與維護」單元。
	清潔刀具及刀網後，將其放回固定架時，把刀具及刀網混在一起。	把每一片刀片放入另一個刀網。如果您沒有調換刀片，可能要花 2 到 3 週的時間才能恢復最理想的刮鬚效果。
	電鬚刀刀頭毀壞或磨損。	更換電鬚刀刀頭。請參閱「更換」單元。
將開/關 (On/Off) 滑動開關往上推，但電鬚刀無法運作。	充電式電池沒電。	為電池充電。請參閱「充電」單元。

問題	可能原因	解決方法
刮鬚之後，皮膚感到刺痛。	您的皮膚需要一些時間才能適應飛利浦電鬚刀系統。	開始使用的第 2 到 3 週間，皮膚會有刺激感。過了這段時間之後，皮膚刺激現象通常就會消失。
刀頭的旋轉速度比平常緩慢。	過多污垢累積在刀頭中。	請清潔電鬚刀刀頭。請參閱「清潔與維護」單元。
	充電式電池電力不足。	為電池充電。請參閱「充電」單元。

當將電鬚刀連接至電腦時，不會自動充電。

電腦已關機或處於休眠模式

開啟電腦。