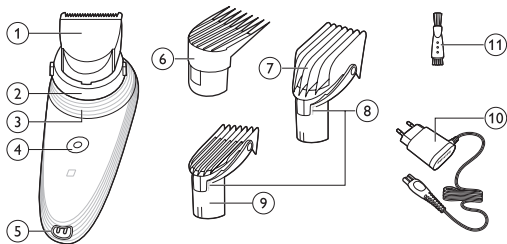




Quick Start Guide/文本

QC5530



- 1 Cutting element
- 2 Swivel head
- 3 Length setting adjustment ring
- 4 On/off button
- 5 Charging light
- 6 Precision comb attachment
- 7 Large comb attachment
- 8 Length setting adjustment ring
- 9 Small comb attachment
- 10 Adapter
- 11 Cleaning brush

- 1 宋体理发部件
- 2 旋转头
- 3 长度设置调整环
- 4 开/关按钮
- 5 充电指示灯
- 6 精密梳齿附件
- 7 大号梳齿附件
- 8 长度设置调整环
- 9 小号梳齿附件
- 10 适配器
- 11 清洁刷

PHILIPS

Charging/充电

1



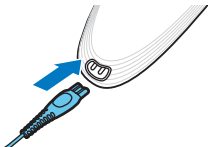
Battery is running low:
charging light flashes orange.

电池电量不足：
充电指示灯呈橙色闪烁。

2

Make sure the appliance is switched off.
Insert appliance plug into appliance
and insert adapter into wall socket.

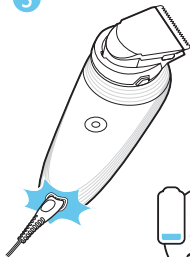
确保产品已关闭。
将产品插头插入适配器，
然后将适配器插入电源插座。



3

Appliance is charging: charging light starts to flash white. Battery is fully charged: charging light lights up white continuously. When appliance is fully charged, it can operate cordlessly up to 1 hour.
Note: corded use is also possible.

产品正在充电：充电指示灯开始呈白色闪烁。
电池已完全充电：充电指示灯将呈白色持续亮起。当产品完全充满电时，可无线操作长达1小时。
注意：也可接电源线使用。



1 hr.



Clipping with comb attachment/使用发梳理发

1



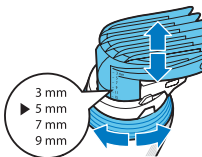
Select a comb attachment and attach it to the swivel head ('click').

选择梳齿附件，并将其安装到旋转头（可听到“咔哒”一声）。

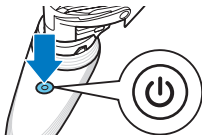
2

Turn length setting adjustment ring to set comb attachment to desired setting.

旋转长度设置调整环，将梳齿附件设为所需设置。



3



Switch on the appliance.

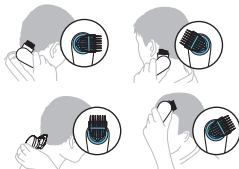
启动产品。

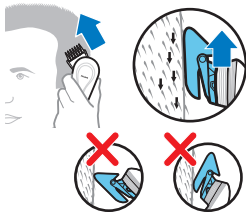


4

Turn swivel head to position that is most comfortable for your arm when you clip different parts of your head.

在修剪不同位置的头发时，可以将旋转头转动到您的手臂感觉最舒服的位置。





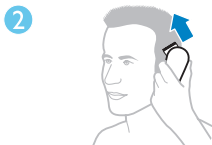
To clip most effectively, move appliance against hair growth direction. Make sure the flat part of comb attachment is always fully in contact with scalp to obtain an even result.

要获得最大修剪效率，请正对头发生长方向移动本产品。确保梳齿附件的扁平部分完全接触到头皮，以获得均匀的修剪效果。

Contouring without comb attachment/ 不用梳齿附件的情况下修整轮廓

- 1 Use the appliance without comb attachment to clip hair very close to the skin (1mm) or to contour neckline and area around ears. Pull the comb attachment off the swivel head. Switch on the appliance.

即使没有梳齿附件，也可使用本产品以非常贴近头皮的距离（1毫米）或紧密贴合颈部周围和双耳附近的皮肤修剪头发。将梳齿附件从旋转头拉出。启动产品。



When you shape contours around the ears, tilt appliance in such a way that only one edge of the cutting element touches the hair ends.

修整耳朵周围的轮廓时，倾斜产品，使修剪部件只有一边接触发梢。

Cleaning/清洁

- 1 For instructions on how to clean the appliance, go to chapter 'Cleaning' in the user manual.

有关如何清洁产品的说明，请参阅用户手册中的“清洁”一章。