

## Concentrator

The concentrator enables you to direct the airflow straight at the brush or comb with which you style your hair:

### 1 Snap the concentrator onto the appliance. (Fig. 4)

To disconnect the concentrator, pull it off the appliance.

## Cleaning

Never rinse the appliance with water.

### 1 Unplug the appliance.

### 2 Remove the inlet grille to remove hairs and dust (Fig. 5).

### 3 Clean the appliance with a dry cloth.

### 4 Clean the attachments with a moist cloth or rinse them under the tap.

## Storage

Do not wind the mains cord round the appliance.

### 1 Unplug the appliance.

### 2 Put the appliance in a safe place and let it cool down.

### 3 You can store the appliance by hanging it from its hanging loop

## Environment

- Do not throw away the appliance with the normal household waste at the end of its life, but hand it in at an official collection point for recycling. By doing this, you help to preserve the environment (Fig. 6).

## Guarantee & service

If you need information or if you have a problem, please visit the Philips website at [www.philips.com](http://www.philips.com) or contact the Philips Customer Care Centre in your country (you find its phone number in the worldwide guarantee leaflet). If there is no Customer Care Centre in your country, go to your local Philips dealer or contact the Service Department of Philips Domestic Appliances and Personal Care BV.

## Troubleshooting

If problems arise with your hairdryer and you cannot solve them with the information below, please contact the nearest Philips service centre or the Philips Customer Care Centre in your country.

Problem	Cause	Solution
The appliance does not work at all.	Perhaps the socket to which the appliance has been connected is not live.	Make sure the socket is live.
	The appliance may have overheated and switched itself off.	Unplug the appliance and let it cool down for a few minutes. Before you switch on the appliance again, check the grilles to make sure they are not blocked by fluff, hair etc.
	The appliance may not be suitable for the voltage to which it has been connected.	Make sure that the voltage indicated on the type plate of the appliance corresponds to the local mains voltage.
	The mains cord of the appliance may be damaged.	If the mains cord is damaged, you must have it replaced by Philips, a service centre authorised by Philips or similarly qualified persons in order to avoid a hazard.

TRESemmé®  
USED BY PROFESSIONALS

HP4992/07 Salon ProCeramic AC



PHILIPS



[www.philips.com](http://www.philips.com)

100% recycled paper  
100% papier recyclé

4222.002.6955.1

**Introduction**

The Philips TRESemmé Salon ProCeramic AC is a powerful hairdryer with a professional long lifetime AC motor, which offers the real professional quality you expect. Moreover, this hairdryer has features that protect your hair from damage and give you the reassurance of the best results. The ion function produces negatively charged ions, which neutralise static and prevent flyaway hair, leaving it frizz-free, manageable and shiny. Next to the ion function, this hairdryer contains a ceramic element that produces a gentler warmth than a conventional heating element and thereby helps to protect your hair from overdrying. You can visit our website at [www.philips.com](http://www.philips.com) for more information about this product or other Philips products.

**General description (Fig. 1)**

- A** Ceramic element
- B** Cold shot button
- C** Temperature switch
  - ☺ = Hot setting
  - ☺ = Warm setting
  - ● = Cool setting
- D** Airflow switch
  - II = High airflow for ultra fast drying
  - I = Gentle airflow specially intended for styling
  - 0 = Off
- E** Ion indicator light
- F** Ion slide switch
- G** Hanging loop
- H** Removable air inlet grille
- I** Ultra-slim professional concentrator

**Important**

Read this user manual carefully before you use the appliance and save it for future reference.

**Danger**

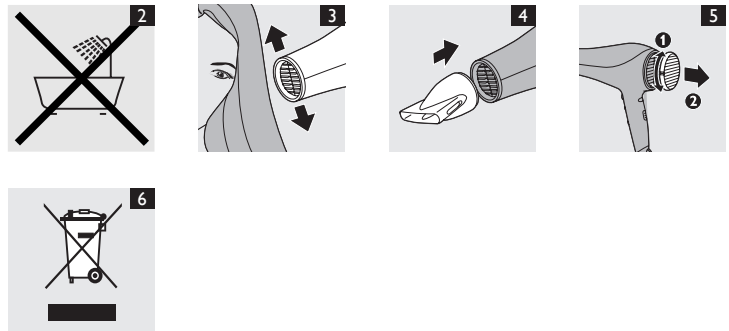
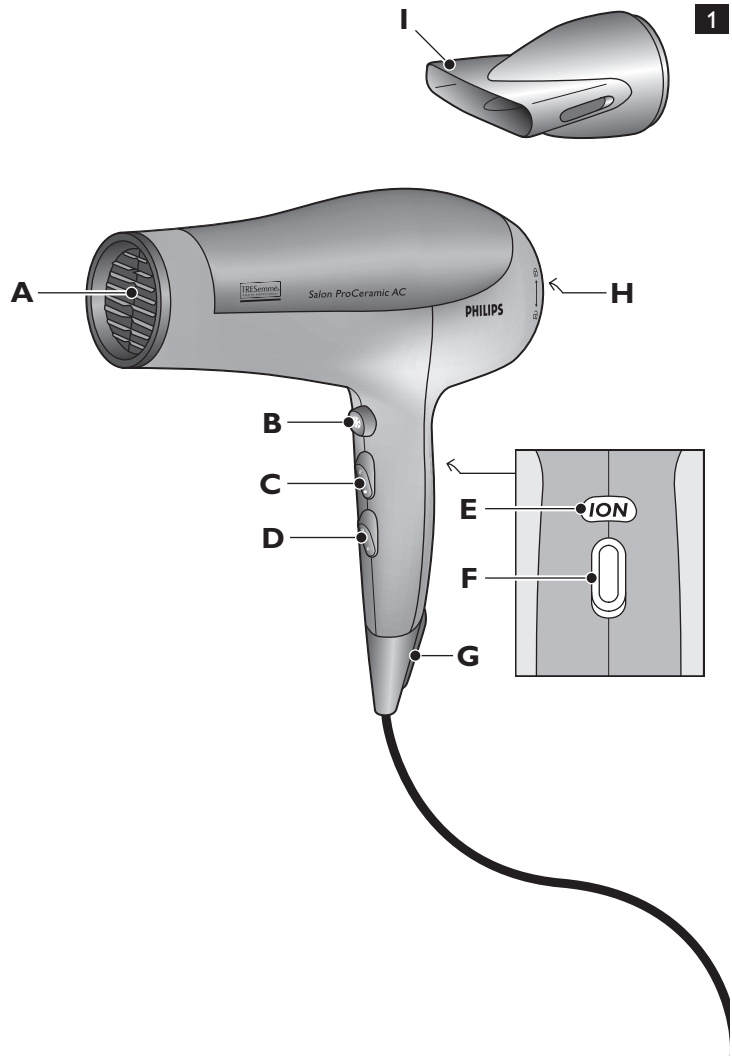
- Keep the appliance away from water. Do not use it near or over water contained in baths, washbasins, sinks etc. When you use the appliance in a bathroom, unplug it after use. The proximity of water presents a risk, even when the appliance is switched off (Fig. 2).
- Do not insert metal objects into the air grilles to avoid electric shock.

**Warning**

- Check if the voltage indicated on the appliance corresponds to the local mains voltage before you connect the appliance.
- Check the condition of the mains cord regularly. Do not use the appliance if the plug, the mains cord or the appliance itself is damaged.
- If the mains cord is damaged, you must have it replaced by Philips, a service centre authorised by Philips or similarly qualified persons in order to avoid a hazard.
- This appliance is not intended for use by persons (including children) with reduced physical, sensory or mental capabilities, or lack of experience and knowledge, unless they have been given supervision or instruction concerning use of the appliance by a person responsible for their safety.
- Children should be supervised to ensure that they do not play with the appliance.

**Caution**

- For additional protection, we advise you to install a residual current device (RCD) in the electrical circuit that supplies the bathroom. This RCD must have a rated residual operating current not higher than 30mA. Ask your installer for advice.
- Never block the air grilles.
- If the appliance overheats, it switches off automatically. Unplug the appliance and let it cool down for a few minutes. Before you switch on the appliance again, check the grilles to make sure they are not blocked by fluff, hair, etc.
- Always switch off the appliance before you put it down, even if it is only for a moment.
- Always unplug the appliance after use.
- Do not wind the mains cord round the appliance.
- You may notice a characteristic odour when you use this hairdryer. This odour is caused by the ions that are generated and is not harmful to the human body.
- Do not probe the ion generator with metal objects.
- Do not use the appliance on artificial hair.
- This appliance is only intended for drying scalp hair. Do not use it for any other purpose.
- Never use any accessories or parts from other manufacturers or that Philips does not specifically recommend. If you use such accessories or parts, your guarantee becomes invalid.



**Electromagnetic fields (EMF)**

This Philips appliance complies with all standards regarding electromagnetic fields (EMF). If handled properly and according to the instructions in this user manual, the appliance is safe to use based on scientific evidence available today.

**Using the appliance**

**Drying**

- 1** Put the plug in the wall socket.
- 2** Set the airflow switch to the gentle or high setting to switch on the appliance.
- 3** Set the temperature switch to the cool, warm or hot setting.
- 4** Switch the ion function on or off with the ion slide switch. The ion function reduces frizz and static electricity and is particularly suitable for almost-dry hair.
- 5** To dry your hair, make brushing movements with the dryer at a small distance from your hair (Fig. 3).

*Tip: When you have finished drying each section, press the cold shot button and direct the cool airflow at your hair. This fixes your style and adds shine.*