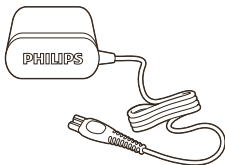
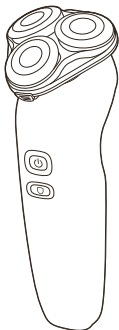
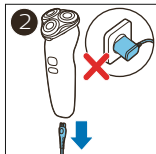
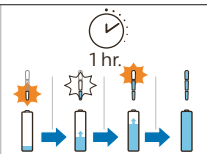
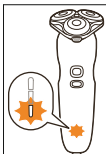
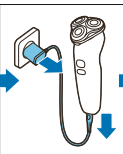
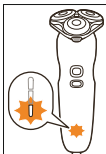
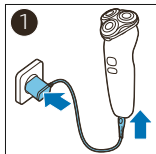
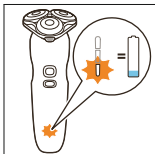


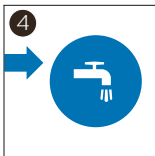
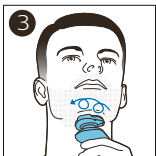
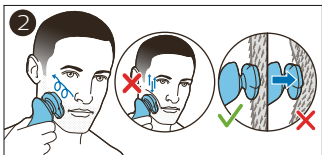
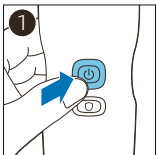
PHILIPS

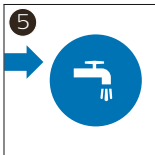
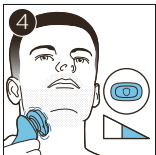
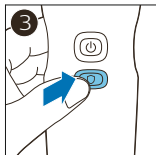
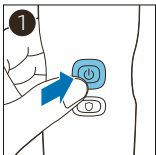
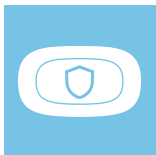
S80

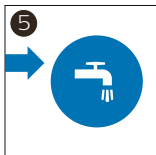
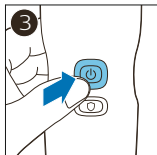
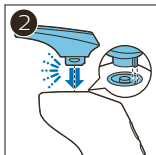
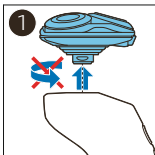
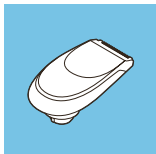


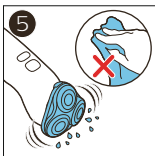
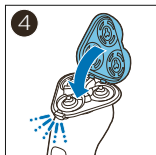
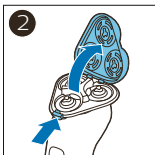
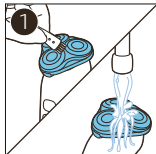
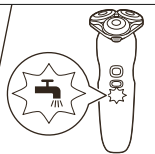
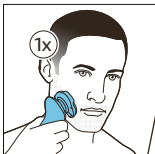
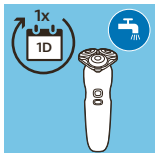


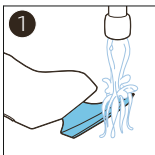
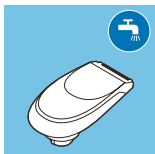


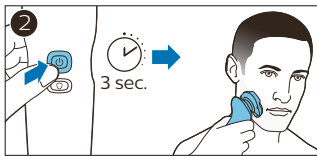
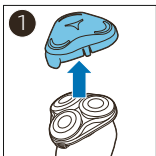
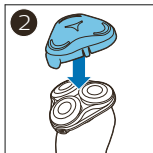
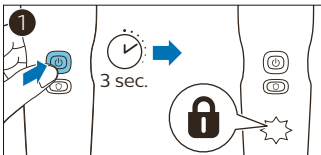


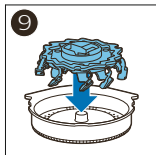
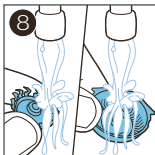
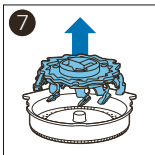
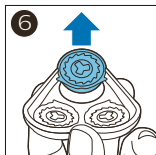
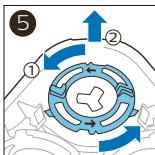
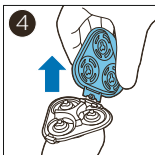
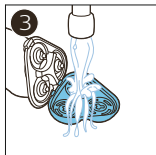
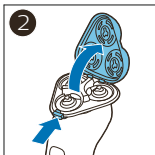
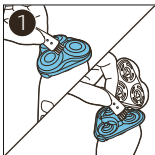


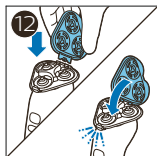
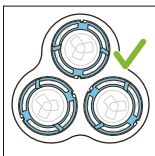
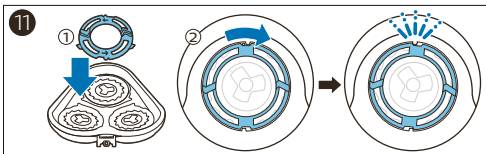
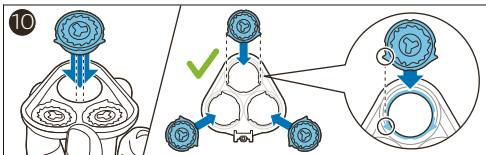


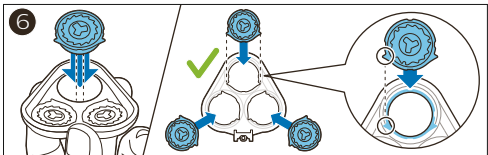
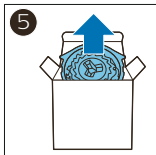
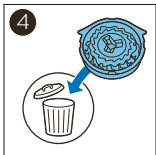
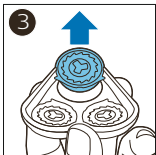
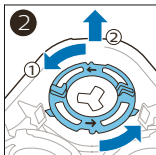
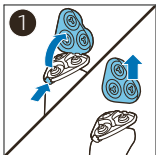


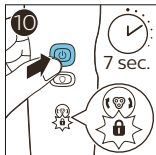
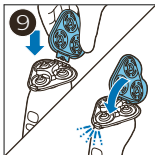
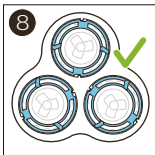
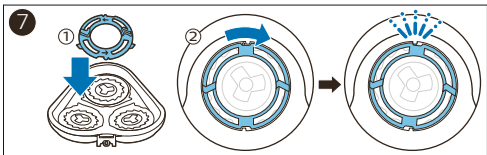














www.philips.com/support

产品中有害物质的名称及含量						
部件名称	有害物质					
	铅 (Pb)	汞 (Hg)	镉 (Cd)	六价铬 (Cr (VI))	多溴联苯 (PBB)	多溴二苯醚 (PBDE)
PCB's 集成电路板	X	O	O	O	O	O
Electrical contact pins 电接触片	X	O	O	O	O	O
Power plug 电源插头	X	O	O	O	O	O

本表格依据SJ/T 11364的规定编制。

O: 表示该有害物质在该部件所有均质材料中的含量均在GB/T 26572规定的限量要求以下。

X: 表示该有害物质至少在该部件的某一均质材料中的含量超出GB/T 26572规定的限量要求。

PHILIPS

产品 : 定制版电动剃须刀
型号 : S80
额定电压 : 220V ~
额定频率 : 50Hz
额定输入功率 : 9W
生产日期 : 请见产品本体
产地 : 中国广东珠海

IPX4



珠海经济特区飞利浦家庭电器有限公司
中国珠海市三灶镇琴石工业区
全国顾客服务热线: 4008 800 008

本产品根据国标 GB4706.1-2005,
GB4706.9-2008制造



保留备用

发行日期: 20/9/2019

© 2019 Koninklijke Philips N.V.

保留所有权利

3000.044.5071.1 (20/9/2019)



>75 % recycled paper

>75 % papier recyclé