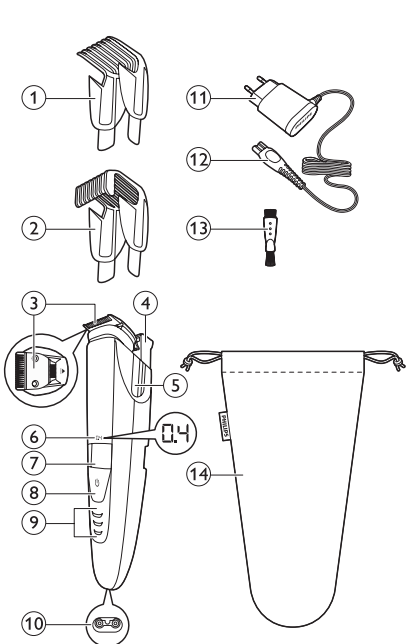


BT9290



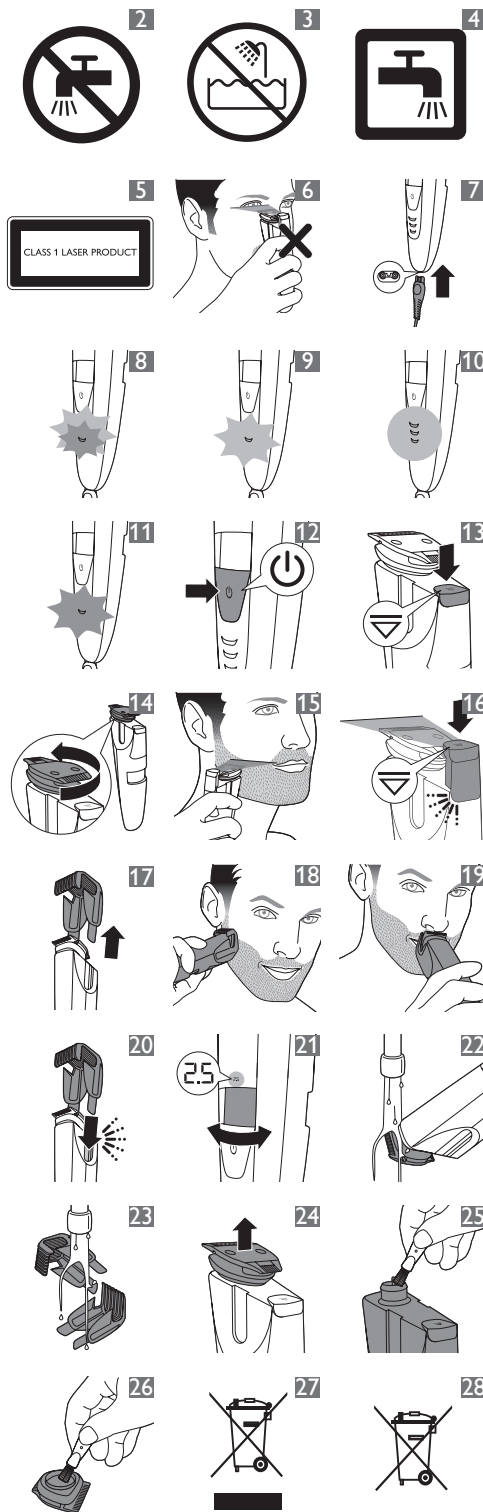
PHILIPS



100% recycled paper
 100% papier recyclé
 100% 循环再造纸

www.philips.com

4222.002.8403.1



ENGLISH

Introduction

Congratulations on your purchase and welcome to Philips! To fully benefit from the support that Philips offers, register your product at www.philips.com/welcome.

General description (Fig. 1)

- 1 Precision trimming comb
- 2 Standard trimming comb
- 3 Turnable trimming head
- 4 Laser guide
- 5 Guiding groove for trimming comb
- 6 Length setting display
- 7 Zoom wheel for length setting
- 8 On/off button
- 9 Battery lights
- 10 Socket for small plug
- 11 Adapter
- 12 Small plug
- 13 Cleaning brush
- 14 Storage pouch

Important

Read this user manual carefully before you use the appliance and save it for future reference.

Danger

- Keep the adapter dry (Fig. 2).
- This symbol means: Forbidden to clean under a running tap.

Warning

- Check if the voltage indicated on the adapter corresponds to the local mains voltage before you connect the appliance.
- The adapter contains a transformer. Do not cut off the adapter to replace it with another plug, as this causes a hazardous situation.
- This appliance is not intended for use by persons (including children) with reduced physical, sensory or mental capabilities, or lack of experience and knowledge, unless they have been given supervision or instruction concerning use of the appliance by a person responsible for their safety.
- Keep the appliance and its cord out of the reach of children.
- This symbol means: Forbidden to use in the shower (Fig. 3).
- Warning: Do not use this appliance close to a bathtub, shower or other containers filled with water.

Caution

- Always check the appliance before you use it. Do not use the appliance if any of its parts is damaged or broken, as this may cause injury.
- Only use this appliance for its intended purpose as shown in the user manual.
- Use, charge and store the appliance at a temperature between 5°C and 35°C.
- Only use the adapter supplied to charge the appliance.
- Make sure the appliance is switched off and disconnected from the mains before you clean it under the tap.
- If the appliance is subjected to a major change in temperature, pressure or humidity, let the appliance acclimatise for 30 minutes before you use it.
- If the adapter is damaged, always have it replaced with one of the original type in order to avoid a hazard.
- Never use compressed air, scouring pads, abrasive cleaning agents or aggressive liquids such as petrol or acetone to clean the appliance.

Compliance with standards

- The appliance can be safely cleaned under the tap (Fig. 4).
- This symbol means: Suitable to be cleaned under a running tap.
- This Philips appliance complies with all applicable standards and regulations regarding exposure to electromagnetic fields.

Class 1 laser product

- The product contains a class 1 laser guide which complies with IEC60825-1 (Fig. 5).
- To avoid all risks, point the laser beam away from your eyes and do not stare directly into the laser beam (Fig. 6).

Preparing for use

Charging

Charge the appliance fully before you use it for the first time and after a long period of disuse. Charging takes about 60 minutes if the appliance is completely empty.

- 1** Make sure the appliance is switched off and the laser guide is in 'off' position.
- 2** Insert the small plug into the appliance and put the adapter in the wall socket (Fig. 7).
 - ▶ First the bottom battery light flashes orange and white alternately (Fig. 8).
 - ▶ After about 3 minutes the bottom battery light flashes white only. At this point the battery contains enough energy for one cordless trimming session (Fig. 9).

- ▶ When the charging process continues, more lights start flashing to show that the charge level of the battery increases.
- ▶ When the appliance is fully charged, all battery lights light up solid white (Fig. 10).

If the appliance is still connected to the mains when it is fully charged, the battery lights go out after 30 minutes.

Battery low and battery empty signals

- ▶ When the battery is almost empty, the bottom battery light starts flashing orange. When you switch off the appliance, the bottom battery light continues to flash orange for a few seconds (Fig. 11).
- ▶ The battery light at the bottom of the appliance flashes orange at a higher frequency when the battery is empty and if you:
 - press the on/off button
 - turn the zoom wheel
 - activate the laser guide

Corded trimming

You can also operate the appliance from the mains.

- 1 Insert the small plug into the socket of the appliance (Fig. 7).
- 2 Put the adapter in a wall socket.
- 3 Press the on/off button to switch on the appliance (Fig. 12).

Using the appliance

You can use the appliance to trim facial hair (beard, moustache and sideburns). This appliance is not intended for trimming lower body parts or scalp hair.

Trimming with the laser guide

You can use the laser guide to define the edges of your beard, sideburns and moustache. The laser guide can be used with the 32mm (1.25in) side as well as the 15mm (0.6in) side of the trimming head.

Note: The laser guide can only be used when you trim without comb.

Note: Although the light from the laser guide is not harmful to the eyes, we advise you not to stare into the light and to avoid shining the light into your eyes (Fig. 6).

- 1 Press the on/off button to switch on the appliance (Fig. 12).
- 2 To trim with the laser guide, press the top of the laser guide to switch it on (Fig. 13).
- ▶ The laser guide pops up and its light shines over the top of the trimming head.

Note: If you trim with the laser guide, make sure you push the laser guide to 'off' position before you turn the trimming head. You may damage the laser guide if you try to turn the trimming head while the laser guide is still popped up (Fig. 14).

- 3 Start trimming where you want to define the edges of your beard and use the laser guide to guide you during trimming (Fig. 15).

Tip: Hold the appliance so that the laser light shines exactly on the edge you want to trim and then place the trimming head on your skin.

- 4 When you are finished, press the on/off button to switch off the appliance (Fig. 12).

Tip: When the motor of the appliance is not operating, the laser guide switches off automatically within 3 minutes. In the 3 minutes before the automatic switch-off of the laser guide, you can use the laser guide to check if the contours of your beard are symmetrical or straight.

- 5 Push down the top of the laser guide to lock it in 'off' position ('click') (Fig. 16).

Trimming without comb

If you trim without comb, your hair is cut off close to the skin. The trimming head has a 32mm (1.25in) side and a 15mm (0.6in) side. The 15mm (0.6in) side of the trimming head allows more precise styling and contouring than the 32mm (1.25in) side.

- 1 If one of the combs is still on the trimming head, pull it off (Fig. 17).

Never pull at the flexible top of the comb. Always pull at the sides.

- 2 Turn the trimming head until the side you want to use points to the front of the appliance (Fig. 14).
- 3 Press the on/off button to switch on the appliance (Fig. 12).
- 4 Hold the appliance in the position that is most convenient for the area you want to trim and make strokes in the desired direction.

Tip: For a comfortable trim close to your skin, place the flat side of the trimming head against your skin and make strokes in the desired direction.

- 5 When you are finished, press the on/off button to switch off the appliance.

Trimming with comb

The appliance comes with two combs: a standard comb and a precision comb. These combs keep the trimming head at a certain distance from your skin. This distance determines the remaining hair length and can be adjusted by turning the zoom wheel.

- Use the standard comb to trim your beard (Fig. 18).
- Use the precision comb to trim hard-to-reach areas, for instance under your nose (Fig. 19).

- 1 Slide the comb into the guiding grooves on both sides of the appliance ('click') (Fig. 20).

Note: The comb does not fit on the trimming head when the 15mm (0.6in) side is pointing towards the front of the appliance. If this is the case, turn the trimming head before you slide the comb onto the trimming head.

- 2 Turn the zoom wheel to select a length setting (Fig. 21).
 - The length setting selected lights up on the front of the appliance.
 - You can select a length from 0.4mm to 7mm (see table in section 'Length settings' below).

- 3 Press the on/off button to switch on the appliance (Fig. 12).

- 4 To trim your beard, move the trimming comb through the hair slowly.

- 5 When you are finished, press the on/off button to switch off the appliance (Fig. 12).

Tips

- Always make sure that the tips of the trimming comb point in the direction in which you move the appliance.
- Make sure that the flat part of the trimming comb is always in full contact with the skin to obtain an even hair length result.
- Since hair grows in different directions, you need to move the appliance in different directions (upward, downward or across).
- Trimming is easier when skin and hair are dry.

Length settings

mm				
0.4	0.6	0.8	1.0	1.2
1.4	1.6	1.8	2.0	2.5
3.0	3.5	4.0	4.5	5.0
6.0	7.0			

Cleaning and maintenance

Clean the appliance after every use.

Never use compressed air, scouring pads, abrasive cleaning agents or aggressive liquids such as petrol or acetone to clean the appliance.

Note: The trimming head does not need any lubrication.

Cleaning the appliance and the combs

- 1 Switch off the appliance.
- 2 Pull the comb off the trimming head (Fig. 17).
- 3 Clean the trimming head under the tap with lukewarm water or clean it with the cleaning brush supplied (Fig. 22).
- 4 Clean the trimming combs under the tap or clean them with the cleaning brush supplied (Fig. 23).

Tip: To make sure that the appliance is dry before you store it in the pouch, let it dry in a well-ventilated room with the laser popped up.

Cleaning the trimming head connector

Note: Make sure you clean the trimming head connector at least once every three months.

- 1 Switch off the appliance.
- 2 Pull the comb off the trimming head (Fig. 17).
- 3 Pull the trimming head off the appliance (Fig. 24).

Note: To prevent damage to the laser guide, put the laser guide in 'off' position before you remove the trimming head.

- 4 Clean the trimming head connector with the cleaning brush supplied (Fig. 25).
- 5 Clean the inside of the trimming head with the cleaning brush supplied (Fig. 26).
- 6 After cleaning, put the trimming head back onto the appliance.

Ordering accessories

To buy accessories or spare parts, visit www.shop.philips.com/service or go to your Philips dealer. You can also contact the Philips Consumer Care Centre in your country (see the worldwide guarantee leaflet for contact details).

Guarantee and support

If you need information or support, please visit the Philips website at www.philips.com/support or read the worldwide guarantee leaflet.

Environment

- Do not throw away the appliance with the normal household waste at the end of its life, but hand it in at an official collection point for recycling. By doing this, you help to preserve the environment (Fig. 27).
- The built-in rechargeable battery contains substances that may pollute the environment. Always remove the battery before you discard and hand in the appliance at an official collection point. Dispose of the battery at an official collection point for batteries. If you have trouble removing the battery, you can also take the appliance to a Philips service centre. The staff of this centre will remove the battery for you and will dispose of it in an environmentally safe way. (Fig. 28)

Frequently asked questions

If you cannot find the answer to your question below, visit www.philips.com/support for a list of frequently asked questions or contact the Consumer Care Centre in your country.

Question	Answer
Is the laser light harmful to my eyes?	No, it is not. The appliance has been thoroughly tested for home use. Nevertheless, we advise you not to stare into the light and to avoid shining the light directly into your eyes.
I cannot turn the trimming head. Why?	You have to push the laser guide to 'off' position before you can turn the trimming head.
Can I clean this appliance under a running tap?	The appliance is watertight and you can clean it under a running tap with lukewarm water.
	Tip: To prevent condensation on the laser window of the laser guide, we advise you not to rinse the appliance under the tap.
Why doesn't the comb fit on the trimming head?	The combs can only be used when the wide side of the trimming head points towards the front of the appliance. If the comb does not fit:

Question	Answer
	1) you may have tried to fit it onto the trimming head when the narrow side of the trimming head points towards the front of the appliance. Turn the trimming head to normal trimming position and then slide the comb onto it. 2) The laser guide is still on. To trim with one of the combs, you first have to push the laser guide to 'off' position.
What is the difference between the combs?	The standard comb is most suitable for trimming your beard to an even length. The precision comb is especially suitable for trimming hard-to-reach areas, for instance beneath your nose.
Why can't I see the laser light?	The laser guide is in 'off' position. Switch on the laser guide by pressing the top of the laser guide.
	You switched off the appliance with the laser guide still popped up. After 3 minutes, the laser guide switches off automatically. Switch on the laser guide by pressing the top of the laser guide.
	You are using the appliance in a room or area where the light is very bright. Move to a room or area where the light is less bright.
Why can't I see the hairs when I use the laser guide?	You are probably using the appliance in a room or area that is too dark. Switch on the light in the room or go to a room or area where there is more light.
How long does it take to charge the appliance for just one trimming session?	This appliance has a quick-charge function. When the appliance starts charging, the bottom light flashes orange and white alternately. After 3 minutes the bottom light stops flashing orange and only flashes white. At this point, the battery contains enough energy for one trimming session.

Question	Answer
Why don't I see a straight uninterrupted laser line?	The laser light from the laser guide may be interrupted because the laser window of the laser guide is dirty. Pop up the laser guide and wipe the laser window clean with a cloth. There is condensation behind the laser window. Pop up the laser guide and let it dry in a well-ventilated room. The laser guide switches off automatically after 3 min.
	You did not assemble the trimming head correctly. Push down the trimming head to make sure it is assembled correctly.

简体中文

简介

感谢您的惠顾，欢迎光临飞利浦！为了您能充分享受飞利浦提供的支持，请在 www.philips.com/welcome 上注册您的产品。

基本说明 (图 1)

- 1 精细修剪梳
- 2 标准修剪梳
- 3 可转动修剪刀头
- 4 激光导引
- 5 修剪梳导槽
- 6 长度设定显示屏
- 7 长度设定缩放轮
- 8 开/关按钮
- 9 电池指示灯
- 10 小插头的转换插座
- 11 适配器
- 12 小插头
- 13 清洁刷
- 14 存储袋

注意事项

使用本产品之前，请仔细阅读本使用说明书，并妥善保管以备日后参考。

- 危险**
- 保持适配器干燥。(图 2)
 - 警告符号注释：禁止用在打开的水龙头下进行清洗。

- 警告**
- 在将本产品连接电源前，务必检查当地的电压是否与电源适配器所标电压一致。
 - 电源软线不能更换，如果软线损坏，此器具(电源适配器)应废弃。
 - 电源适配器内含有一个变压器。切勿自行更换插头，否则将导致严重后果。
 - 肢体不健全、精神有障碍及缺乏相关经验和知识的人(包括儿童)必须在监护人的监督及指导下使用。
 - 将产品及其线缆放在儿童接触不到的地方。
 - 警告符号注释：禁止在洗澡或淋浴时使用。(图 3)
 - 警告：不要在盛水的浴缸、淋浴、洗脸盆或其他器皿附近使用本器具。

- 注意**
- 使用前，请务必检查产品。一旦产品的任何部件损坏或损毁，请勿再使用产品，否则可能对人体造成伤害。
 - 只能将本产品用于用户手册中所示的原定用途。
 - 必须在 5 摄氏度至 35 摄氏度之间的温度下使用、存放和为本产品充电。
 - 为产品充电，须用随产品提供的电源适配器。
 - 清洁本产品之前，请确保产品电源关闭并已将电源插头拔出。
 - 如果产品的使用温度、气压或湿度方面改变较大，应在使用之前让产品适应 30 分钟。
 - 如果适配器已损坏，则务必更换原装型号适配器，以免发生危险。
 - 切勿使用压缩气体、钢丝绒、研磨性清洁剂或腐蚀性液体(例如汽油或丙酮)来清洁产品。

- 符合标准**
- 本产品可放心在水龙头下清洗。(图 4)
 - 符号注释：适合用在打开的水龙头下进行清洗。
 - 本飞利浦产品符合所有有关暴露于电磁场的适用标准和法规。

- 1类激光产品**
- 本产品包含符合 GB7247.1 要求的 1 级激光导引。(图 5)
 - 为避免所有风险，请将激光束远离您的双眼，切勿直视激光束。(图 6)

使用准备

充电

首次使用前或长时间不用之后，请为产品充满电。如果本产品电能完全耗尽，请充电大约 60 分钟。

- 1** 确保产品已关闭，且激光导引位于“关闭”位置。
- 2** 将小插头插入产品，然后将适配器插入电源插座。(图 7)
- 首先底部电池指示灯会交替闪烁橙色和白色。(图 8)
 - 大约 3 分钟后，底部电池指示灯仅呈白色闪烁。此时电池包含的电量足够完成一次不接电源的修剪过程。(图 9)
 - 充电过程继续时，更多指示灯开始闪烁以显示电池充电量增加。
 - 产品充满电时，所有充电指示灯会呈白色亮起。(图 10)

如果产品在充满电时仍然连接电源，则电池指示灯将在 30 分钟后熄灭。

电池电量不足和电池耗尽信号	
当电池电量即将耗尽时，底部电池指示灯开始闪烁橙色。关闭本产品后，底部充电指示灯将持续闪烁橙色几秒钟。(图 11)	当电池电量耗尽且您执行以下操作时，本产品底部的充电指示灯将以较高频率闪烁橙色：
	<ul style="list-style-type: none">按开/关按钮旋转缩放轮激活激光导引
接电修剪	

您也可以接电操作产品。

- 1** 将小插头插入产品插座。(图 7)
- 2** 将适配器插入电源插座。
- 3** 按开/关按钮启动产品。(图 12)

使用本产品
您可以使用本产品修剪面部须发（胡须、须髥和鬓角）。本产品不得用于修剪身体下部毛发或头发。
使用激光导引进行修剪

您可以使用激光导引确定胡须、鬓角和须髥的边缘。激光导引可与修剪刀头的 32 毫米（1.25 英寸）一侧和 15 毫米（0.6 英寸）一侧一起使用。

注意： 激光导引只能在不使用修剪梳修剪时使用。

注意： 尽管激光导引的光线对眼睛无害，但我们建议您不要直视光线并且避免光线照射您的双眼。(图 6)

- 1** 按开/关按钮启动产品。(图 12)
- 2** 要使用激光导引进行修剪，请按下激光导引顶部将其打开。(图 13)
- 激光导引将弹出，其光线会照在修剪刀头顶部。

注意： 如果您使用激光导引进行修剪，在旋转修剪刀头之前，请确保将激光导引推至“关闭”位置。如果您在激光导引仍弹出时旋转修剪刀头，可能会损坏激光导引。(图 14)

- 3** 在您想确定胡须边缘的位置开始修剪，并且在修剪过程中使用激光导引指导您修剪。(图 15)

提示： 握持产品以确保激光能正好照在您想修剪的边缘，然后将修剪刀头放在您的皮肤上。

- 4** 完成剃须后，按开/关按钮关闭产品。(图 12)

提示： 当产品的马达不工作时，激光导引会在 3 分钟内自动关闭。在激光导引自动关闭前的 3 分钟内，您可以使用激光导引检查您的胡须轮廓是否对称或笔直。

- 5** 下推激光导引的顶部，将其锁在“关闭”位置（可听到“咔哒”一声）。(图 16)

修剪（无修剪梳）

如果您不使用修剪梳进行修剪，则会贴近皮肤修剪您的毛发。修剪刀头有 32 毫米（1.25 英寸）一侧和 15 毫米（0.6 英寸）一侧。修剪刀头的 15 毫米（0.6 英寸）一侧比 32 毫米（1.25 英寸）一侧的造型和轮廓效果更精确。

- 1** 如果某个修剪梳仍在修剪刀头上，请将其拔出。(图 17)
- 切勿拉动修剪梳的活动顶部。必须拉拔侧面。

- 2** 旋转修剪刀头，直至您要使用的一侧指向产品正面。(图 14)

- 3** 按开/关按钮启动产品。(图 12)

- 4** 在最方便修剪的位置握住产品，按所需的方向来回移动。

提示： 为了获得舒适的贴肤修剪，请将修剪刀头平坦的一侧紧贴皮肤放置，然后按所需的方向来回移动。

- 5** 完成剃须后，按开/关按钮关闭产品。

修剪（有修剪梳）

本产品随附有两个梳齿：标准梳齿和精密梳齿。这些梳齿可使修剪刀头与皮肤保持一定的距离。此距离可确定剩余的毛发长度，并且可通过转动缩放轮来调整。

- 使用标准梳齿修剪胡须。(图 18)
- 使用精密梳齿修剪难以触及的部位，例如鼻子下方。(图 19)

- 1** 将梳齿滑入产品两侧的导槽中（可听到“咔哒”一声）。(图 20)

注意： 当修剪刀头的 15 毫米（0.6 英寸）一侧指向产品正面时，梳齿无法装入修剪刀头。如果发生这种情况，请先转动修剪刀头，然后再将梳齿滑入修剪刀头。

- 2** 旋转缩放轮可选择长度设定。(图 21)
- 选择的长度设定会在产品正面亮起。
 - 您可以选择 0.4 毫米至 7 毫米之间的长度（请参见以下“长度设定”章节中的表）。

- 3** 按开/关按钮启动产品。(图 12)

- 4** 要修剪胡须，请将修剪梳在毛发上缓缓移动。

- 5** 完成剃须后，按开/关按钮关闭产品。(图 12)

- 提示
- 确保修剪梳齿方向与产品移动方向一致。
 - 确保修剪梳的扁平部分始终完全接触皮肤，以获得均匀的头发生长。
 - 由于头发会朝不同方向生长，您必须沿着不同方向（向上/向下或交叉）移动本产品。
 - 皮肤和毛发干燥时修剪更容易。

长度设定				
毫米				
0.4	0.6	0.8	1.0	1.2
1.4	1.6	1.8	2.0	2.5
3.0	3.5	4.0	4.5	5.0
6.0	7.0			

清洁和保养

每次使用后都应立即清洁产品。

切勿使用压缩气体、钢丝绒、研磨性清洁剂或腐蚀性液体（例如汽油或丙酮）来清洁产品。

注意： 修剪刀头不需要任何润滑。

- 清洁产品和修剪梳
- 1** 关闭产品。
- 2** 将修剪梳从修剪刀头中拉出。(图 17)
- 3** 在温水龙头下清洗修剪刀头或用随附的清洁刷进行清洁。(图 22)
- 4** 在水龙头下清洗修剪梳或用随附的清洁刷进行清洁。(图 23)

提示： 为了确保将产品放入软袋之前保持干燥，请将其放在通风良好的房间内干燥，同时弹出激光导引。

清洁修剪刀头连接器

注意： 确保至少每三个月清洁一次修剪刀头。

- 1** 关闭产品。
- 2** 将修剪梳从修剪刀头中拉出。(图 17)
- 3** 将修剪刀头从产品中拉出。(图 24)
- 注意： 为防止损坏激光导引，请将激光导引置于“关闭”位置，然后取下修剪刀头。
- 4** 用随附的清洁刷清洁修剪刀头接头。(图 25)
- 5** 用随附的清洁刷清洁修剪刀头内侧。(图 26)
- 6** 清洁后，将修剪刀头放回产品上。

订购附件

要购买附件和备件，请访问 www.shop.philips.com/service 或 请联系飞利浦经销商。您也可以联系您所在国家/地区的飞利浦客户服务中心（联系详情，请参阅全球保修卡）。

保修和支持

如果您需要信息或支持，请访问飞利浦网站 www.philips.com/support 或阅读全球保修卡。

环保

- 弃置产品时，请不要将其与一般生活垃圾堆放在一起；应将其交给官方指定的回收点。这样做有利于环保。(图 27)
- 内置充电电池含有可能会污染环境的物质。丢弃产品时，一定要将电池取出，并将产品送到官方指定的回收站。到官方指定的电池回收站处理电池。如果您在取出电池时遇到问题，您也可以将产品送至飞利浦维修中心。维修中心的员工会帮您取出电池，并以环保的方式处理它。(图 28)

常见问题

如果您无法在下方找到问题的答案，请访问 www.philips.com/support 查阅常见问题列表，或联系您所在国家/地区的飞利浦客户服务中心。

问题	回答
激光对我的眼睛有害吗？	无害。本产品已经过全面测试，适合家庭使用。但是我们仍建议您不要直视光线并且避免光线直射您的眼睛。
我无法旋转修剪刀头，为什么？	您必须在旋转修剪刀头前将激光导引推至“关闭”位置。
我能否在水龙头下清洁本产品？	本产品防水，您可以在温水水龙头下清洗。
	提示：为了防止激光导引的激光窗口出现冷凝现象，我们建议您不要在水龙头下冲洗本产品。
为什么修剪梳无法装入修剪刀头？	修剪梳只能在修剪刀头的宽面朝向产品正面时使用。如果修剪梳无法装入：
	1) 您可能试图在修剪刀头的窄面朝向产品正面时将修剪梳装入修剪刀头。请将修剪刀头旋转至正常修剪位置，然后将修剪梳滑入。
	2) 激光导引仍然打开。要使用其中一个修剪梳修剪，您必须先將激光导引推至“关闭”位置。
梳齿之间有什么不同？	标准梳齿最适合将胡须修剪至平均长度。精密梳齿特别适合修剪难以触及的部位，例如鼻子下方。
为什么我看不到激光？	激光导引位于“关闭”位置。按下激光导引顶部可打开激光导引。
	您在激光导引仍弹出时关闭了产品。3 分钟后，激光导引会自动关闭。按下激光导引顶部可打开激光导引。
	您在光线非常明亮的房间或区域中使用产品。移至光线较暗的房间或区域。
为什么使用激光导引时我看不到毛发？	您可能在太暗的房间或区域中使用本产品。打开房内的灯，或移至光线较亮的房间或区域。

问题	回答
产品只需充电多长时间即可完成一次修剪过程？	本产品具有快速充电功能。产品开始充电时，底部的指示灯会交替闪烁橙色和白色。3 分钟后，底部电池指示灯停止闪烁橙色，仅呈白色闪烁。此时电池包含的电量足够完成一次修剪过程。
为什么我看不到笔直的不间断激光？	激光导引中的激光可能会因激光导引的激光窗口变脏而中断。弹出激光导引，然后用布将激光窗口擦拭干净。
	激光窗口后面有冷凝现象。弹出激光导引，然后让激光导引在通风良好的房间干燥。激光导引将在 3 分钟后自动关闭。
	您没有正确组装修剪刀头。向下推动修剪刀头，以确保其正确安装。

PHILIPS

<